

APL 10877
 4-15-96

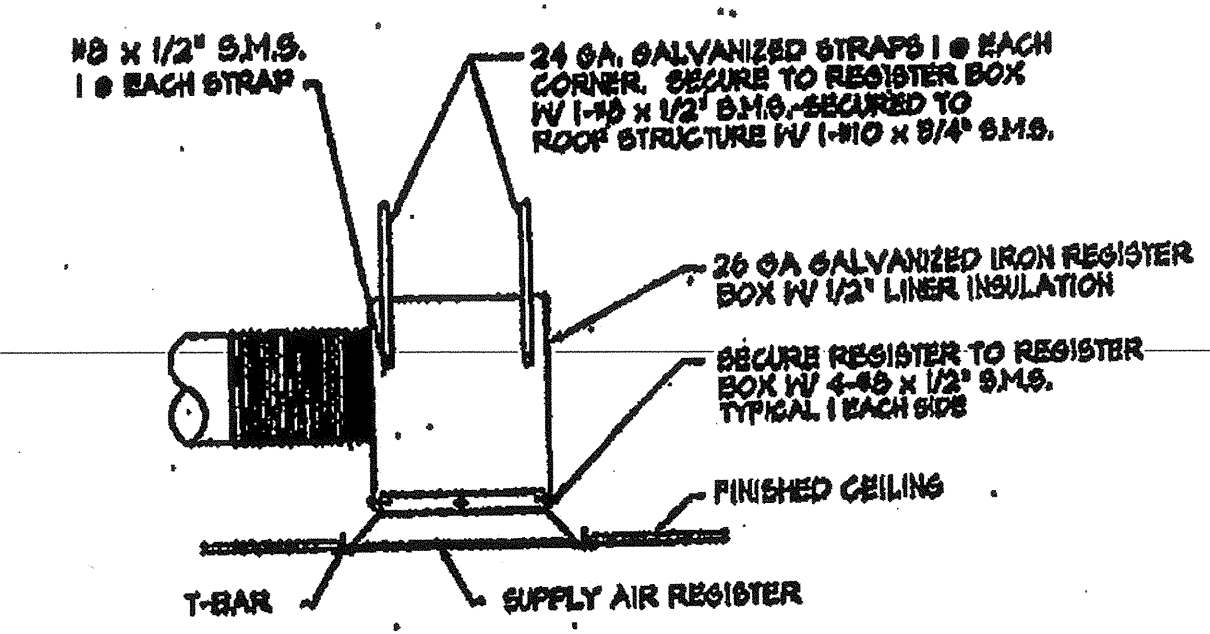
EQUIPMENT & MATERIAL SCHEDULE

①
 BRAND MODEL 88142-110 HALL MOUNT HEAT PUMP
 1200 BTUH COOLING, SEER = 10.0
 1200 BTUH HEATING, HSPF = 8.00
 1405 CFM @ 21" SP-VT = 550 LBS.
 208/230V-1PH-50HZ, MAX. FLA = 20.3 AMPS.
 MAX. FUSE = 60 AMP.
 WITH COMMERCIAL ROOM VENTILATOR

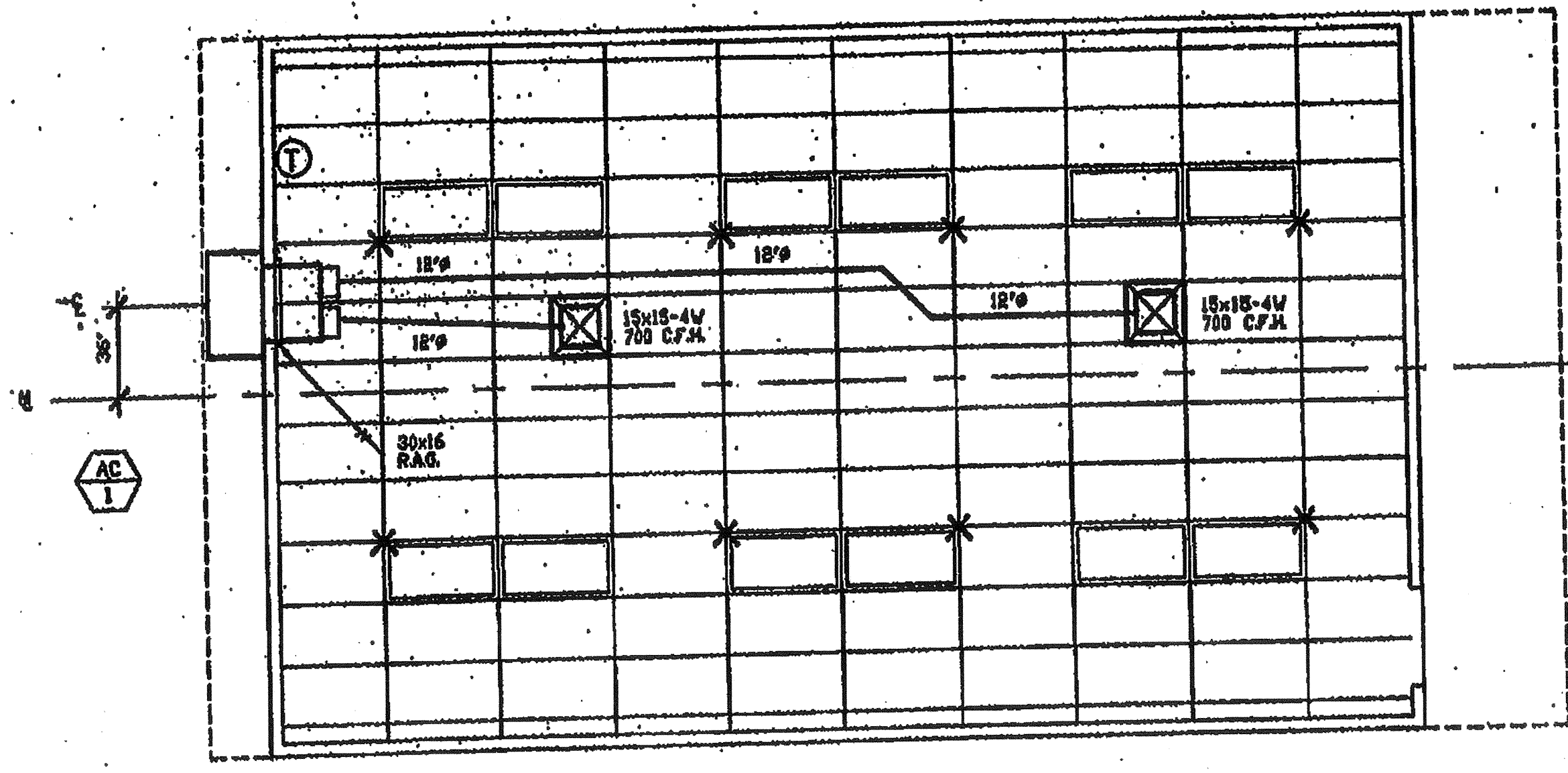
SUPPLY FLETH: 24 ga. GALVANIZED IRON SHEETS W/ 1" LINER INSULATION
 INTERIOR DUCTWORK: POLYCORB FLEX DUCT CLASS 1 UL-181 W/ TAPED COLLARS ON BOTH ENDS
 REGISTER BOXES: 24 ga. GALVANIZED IRON SHEETS W/ 1/2" LINER INSULATION
 SUPPLY AIR REGISTERS: KRUGGER 1200-F28 SERIES (MINIMUM SIZE 18x8)
 RETURN AIR GRILLES: METALAIR 74" SERIES
 THERMOSTAT: WHITE RODGER #1F42 W/ CLEAR FACE GUARD

IDENTIFICATION STAMP
 DIV. OF THE STATE ARCHITECT
 APPD 119917
 AC FLS SS
 DATE APR 30 2016

ATTACH ALL SUPPLY AND RETURN AIR GRILLES TO BOXES W/ 4 #8 S.M.S. THEN TO ROOF STRUCTURE W/ 4 - 1 1/2" X 24 ga. GALVANIZED STRAPS AT ALL CORNERS.
 ATTACH ALL FLEX DUCT TO ROOF STRUCTURE W/ 1 - 1 1/2" X 24 ga. GALVANIZED STRAP AT INTERVALS NOT TO EXCEED 4'.
 SEAL ALL JOINTS AIR TIGHT.



REGISTER BOX DETAIL
 N.T.S.



AIR CONDITIONING FLOOR PLAN
(OPPOSITE HAND) (R.H. DOOR) 1/4" = 1'-0"

CHECKED

REVISIONS

18333 Riverside Ave., Jacksonville, FL 32204
 (904) 788-7300
 Fax (904) 788-0255
IFCORA MODULAR INDUSTRIES
 REGISTERED ENGINEERING FIRM
 WILLIAMS/SCOTSMAN GROUP

AIR CONDITIONING FLOOR PLAN

5767
 12/23/15
 12/23/15