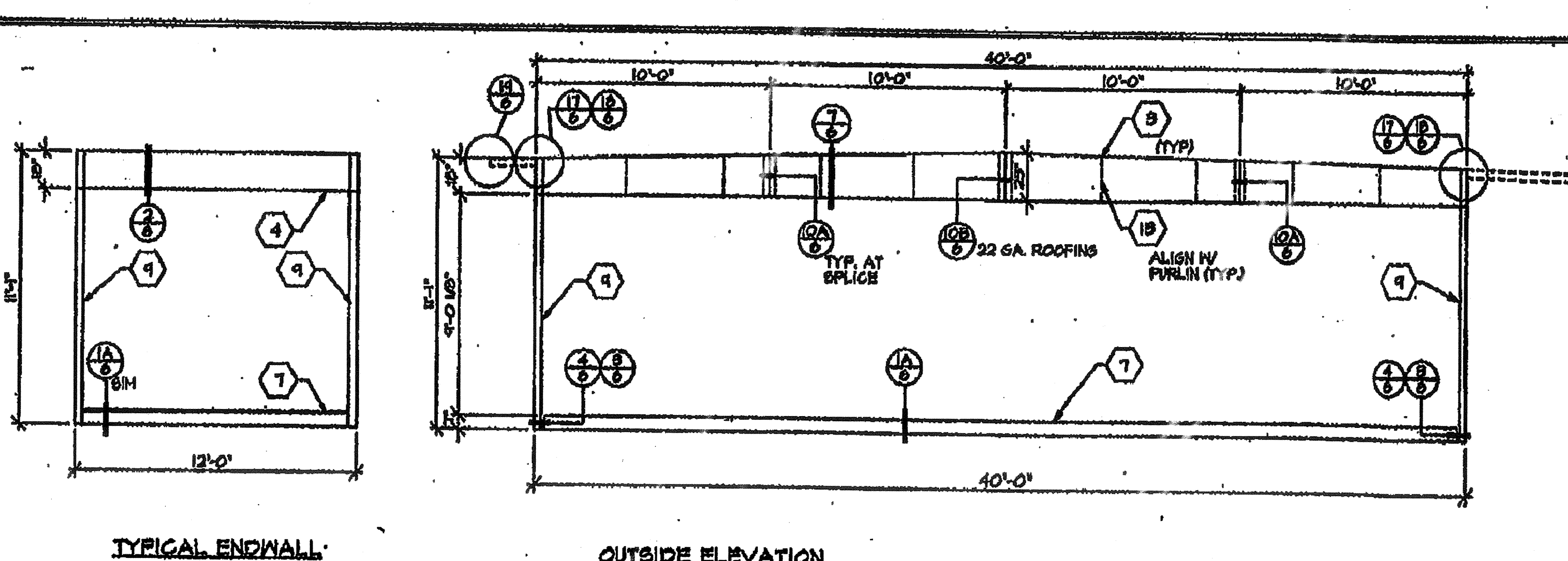
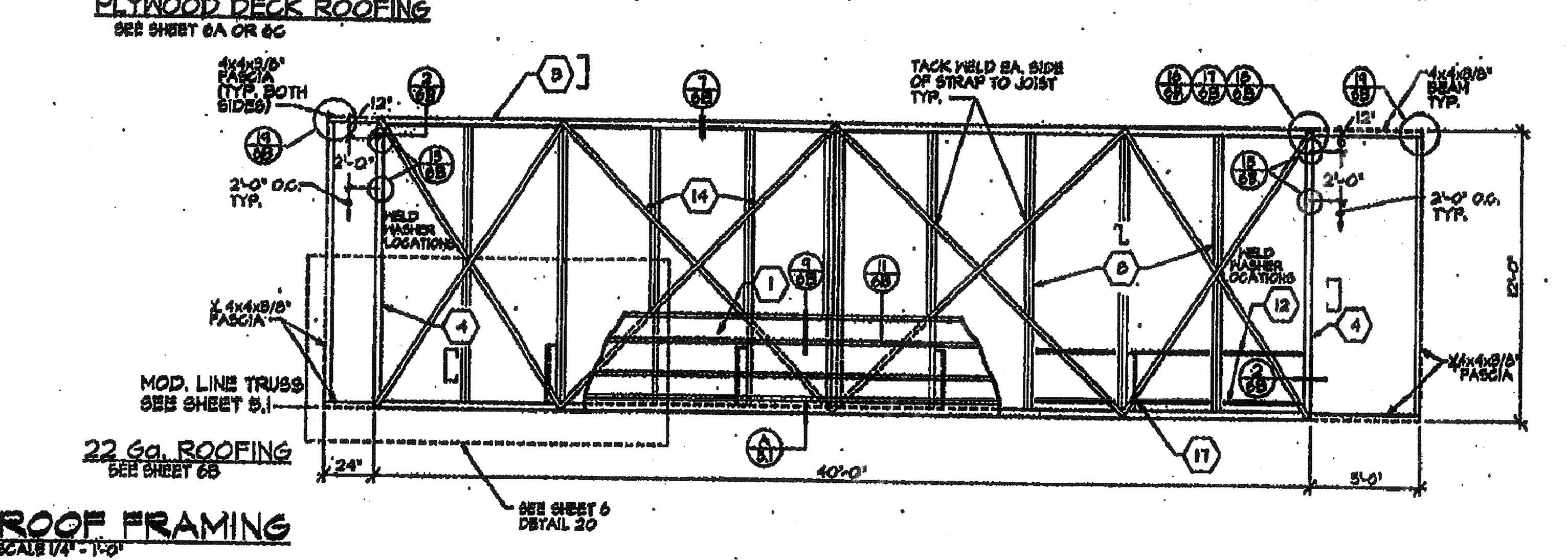
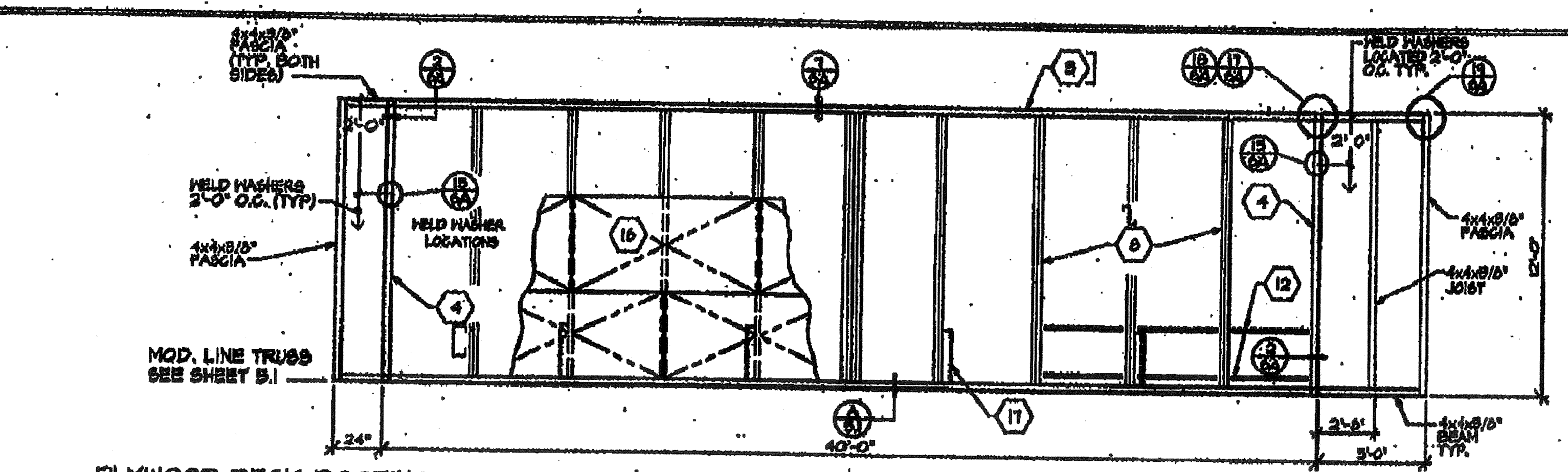


KEYNOTES

- 1 STEEL ROOF DECK - 22 GA. ROLL FORMED DECK WITH SPANNING BEAM - SEE NOTE 1 INT 6A FOR ATTACH
- 2 PLYWOOD FLOOR SHEATHING - 1 1/2" A.P.A. STUCCO-1 - BLOCK 110, P.S. 1-25. SEE NOTE 2 INT 6A OR 6B FOR ATTACH
- 3 2" x 4" x 1/2" S.S. STEEL ROOF HEADER
- 4 1" x 11" S.S. STEEL BLOCK @ 40' O.C.
- 5 NOT USED
- 6 7" x 4.0 LB PERIMETER FLOOR FRAMING
- 7 1" x 11" S.S. STEEL ROOF JOIST @ 40' O.C.
- 8 STEEL COLUMN - 8 1/2" x 8 1/2" x 1/2" TUBE
- 9 NOT USED
- 10 WELD WASHER FOR CEILING GRID - TYP. BOTH SIDES SEE DETAIL 19.10.
- 11 STRAP TACKED TO UNDERSIDE OF JOIST @ 24" O.C. FOR INSULATION SUPPORT.
- 12 5/16" FULL HEIGHT STIFFENER AT CURB IN LOCATIONS
- 13 2" x 2" S.S. STRAP @ 24" WITH 1/8" PILLSET WELD EACH END TO ROOF BEAM/HEADER TYP.
- 14 1" x 11" S.S. STEEL FLOOR JOIST - SEE FRAMING PLAN FOR FLOOR JOIST SPACING
- 15 PLYWOOD ROOF SHEATHING 5/8" C-P INT WITH EXT. SLUE 48/24 1/2" x 1/2" SQUARE EDGE WITH PLYWOOD CLIPS @ 16" O.C. LONG EDGES
- 16 1 1/2" x 1/2" x 1/2" BRACE (SEE SHT. 6J DET 10)

IDENTIFICATION STAMP
DIV. OF THE STATE ARCHITECT
APPROX 119917
AC: FLS SS
DATE APR 9 4 2010



STRUCTURAL ELEVATION
SCALE 1/4" = 1'-0"

D.S.A.

REVISED

PROPOSED REVISIONS

NO. 1

DATE 11/10/09

BY [Signature]

CHECKED

REVISIONS

NO. 1

DATE

BY

100% MODULAR INDUSTRIES

100% Modular Inc., 100% Way, Dallas, TX 75243
Phone: (972) 752-2275
Fax: (972) 752-2276

RELAYABLE BUILDING FOR
WILLIAMS/SCOTSMAN GROUP

**FLOOR FRAMING,
ROOF FRAMING,
STRUCTURAL
ELEVATIONS**

SCALE 1/4" = 1'-0"

U

DATE: 11/10/09

BY: [Signature]

NO. 1

DATE

BY