

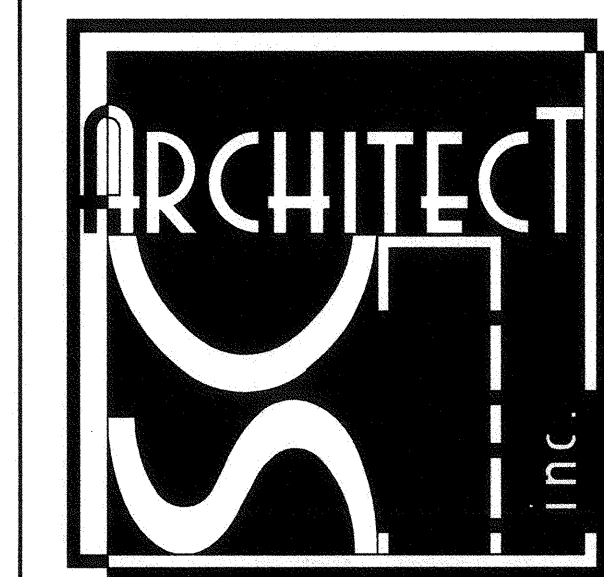
FIRE ALARM SYMBOL SCHEDULE			
SYMBOL	NAME	DESCRIPTION	CSFM #
(E)	EXISTING ITEM		
U.O.N.	UNLESS OTHERWISE NOTED		
---	WIRING UNDERGROUND OR IN WALL	3/4" MIN U.O.N.	
---	EXISTING CONDUIT / WIRING TO REMAIN		
FCP	(E) FIRE ALARM CONTROL PANEL	HOCHIKI #FN-4127	7165-0410-0159
FC	FIRE ALARM / SIGNAL TERMINAL CABINET	SEE PLAN	
FE	FIRE ALARM EXPANDER PANEL	HOCHIKI #FN-642-ULADA-R	7315-0410-0166
EVAC	(E) FIRE ALARM VOICE EVACUATION SYSTEM	HOCHIKI #FNV-AMP-16-R	6911-0410-0175
(E)	TYPICAL EXISTING DEVICE	SEE ORIGINAL CONSTRUCTION DOCUMENTS	
SD	SMOKE DETECTOR	HOCHIKI #ALN-V HSE-NSA-6 BASE	7272-0410-0204 7300-0410-0132
A	ATTIC HEAT DETECTOR	HOCHIKI #ATL-EA HSE-NSA-6 BASE	7272-0410-0203 7300-0410-0132
MC	LOW PROFILE CEILING MOUNT SPEAKER / STROBE	HOCHIKI # HSSPK24-1575WLPR	7320-0410-0195
W	(M) MULTI-CANDELA (15, 30, 60, 75 AND 110) SETTINGS W=WATTAGE (1/8 W, 1/4 W, 1/2 W, 1 W, 2W AND 4W) SEE FLOOR PLAN FOR SETTINGS		

MARK	DATE	REVISIONS
△		
△		

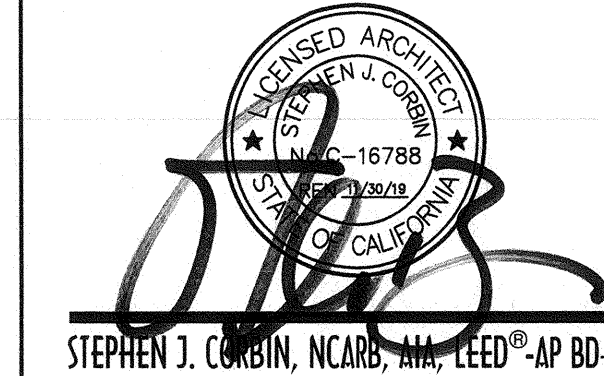
CHECK AND VERIFY ALL DIMENSIONS BEFORE PROCEEDING WITH THE WORK. REPORT DISCREPANCIES TO THE ARCHITECT. ALL CONSTRUCTION SHALL CONFORM TO THE C.B.C.

**SITE IMPROVEMENTS FOR (1) 24'x 40' MODULAR BUILDING AT  
HORACE MANN ELEMENTARY SCHOOL**  
2710 NILES ST., BAKERSFIELD, CA, 93306  
FOR  
BAKERSFIELD CITY SCHOOL DISTRICT  
BAKERSFIELD KERN COUNTY, CALIFORNIA

IDENTIFICATION STAMP  
DIV. OF THE STATE ARCHITECT  
OFFICE OF REGULATION SERVICES  
APPL. 03-1199.1  
FILE: 15-6  
DATE: APR 24 2018  
PTN - 63321-339

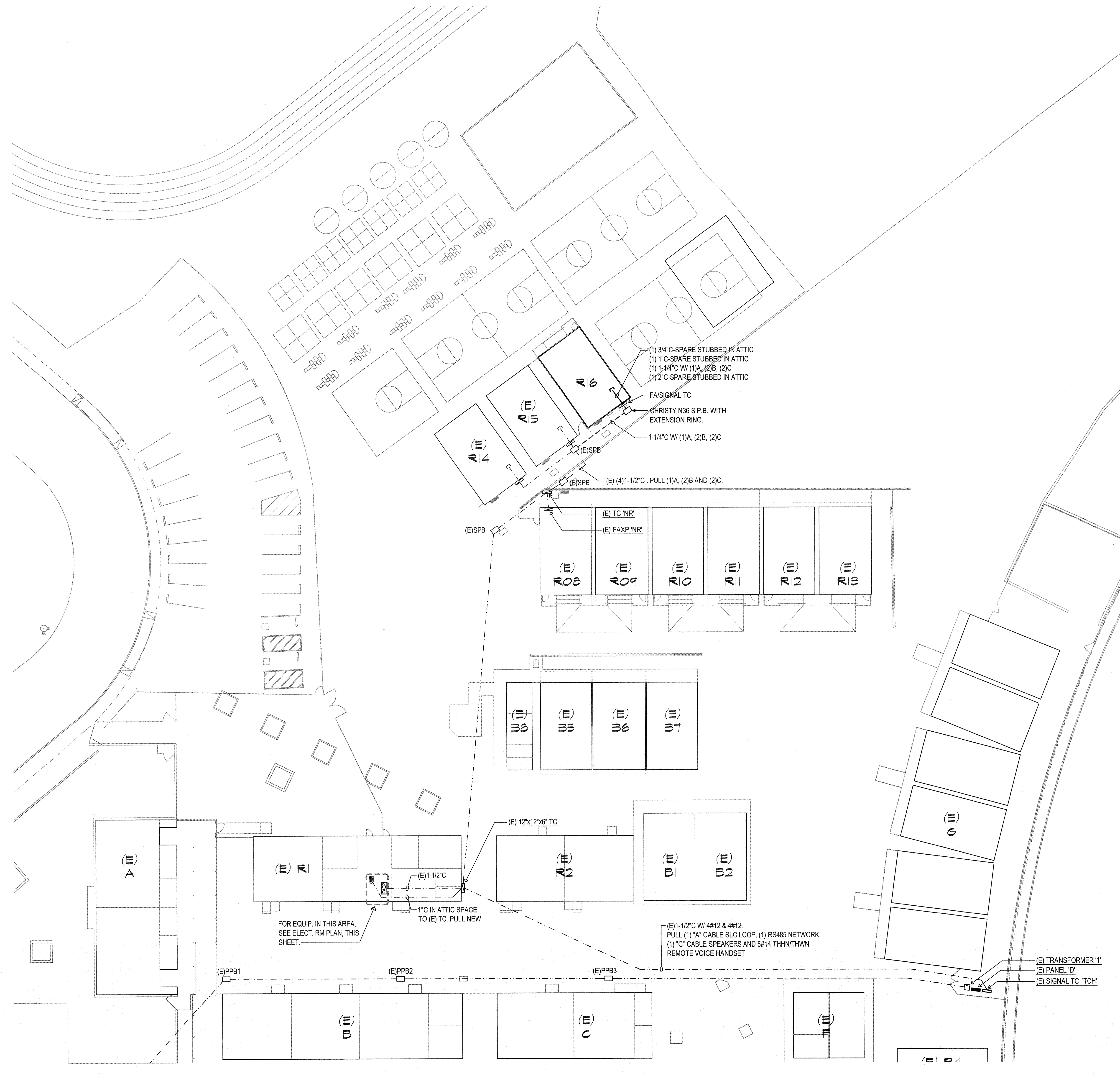


1601 NEW STINE ROAD, SUITE 280  
BAKERSFIELD, CA 93309  
PH: (661) 397-4377  
FAX: (661) 397-4378  
WWW.SCARCHITECT.COM

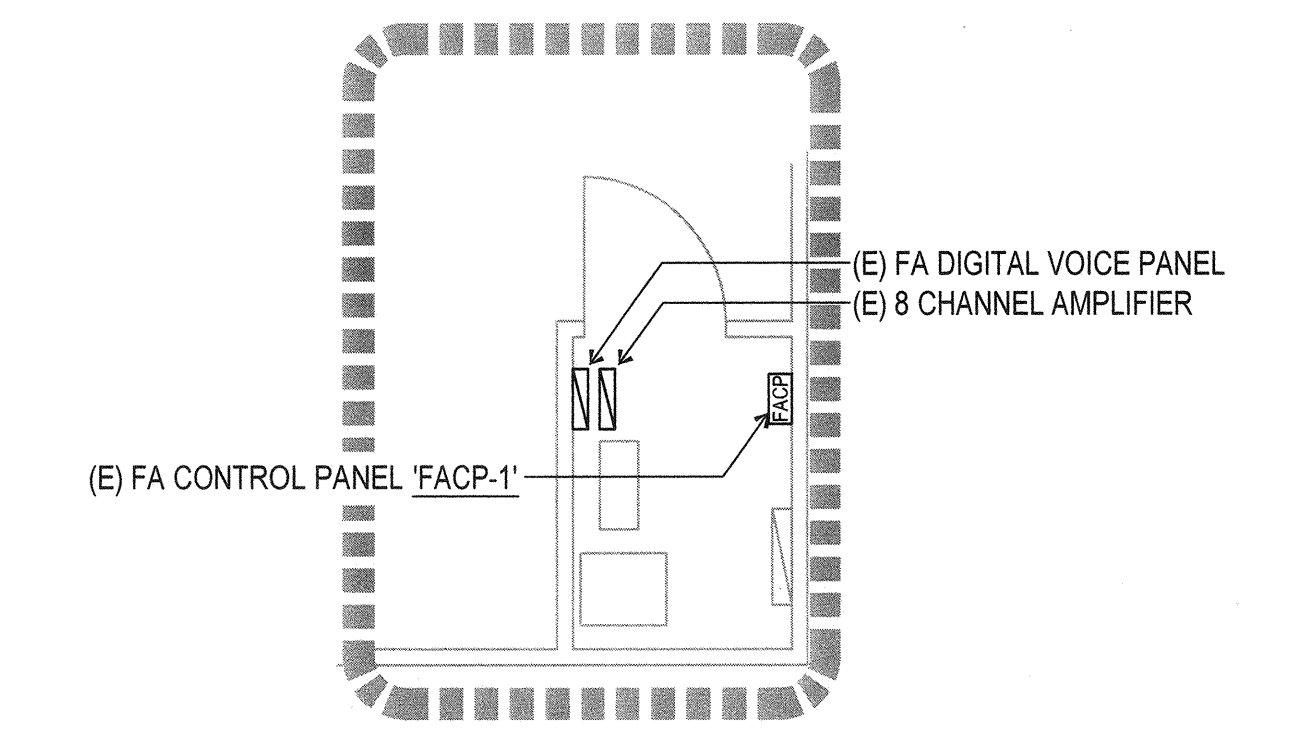
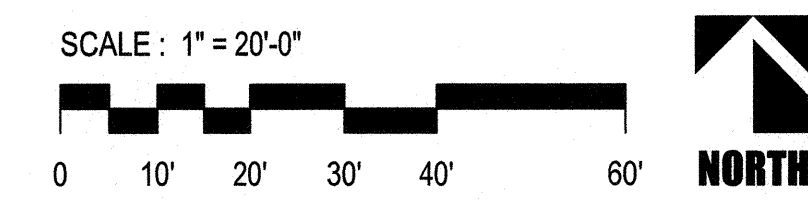


**FIRE ALARM  
SITE PLAN**

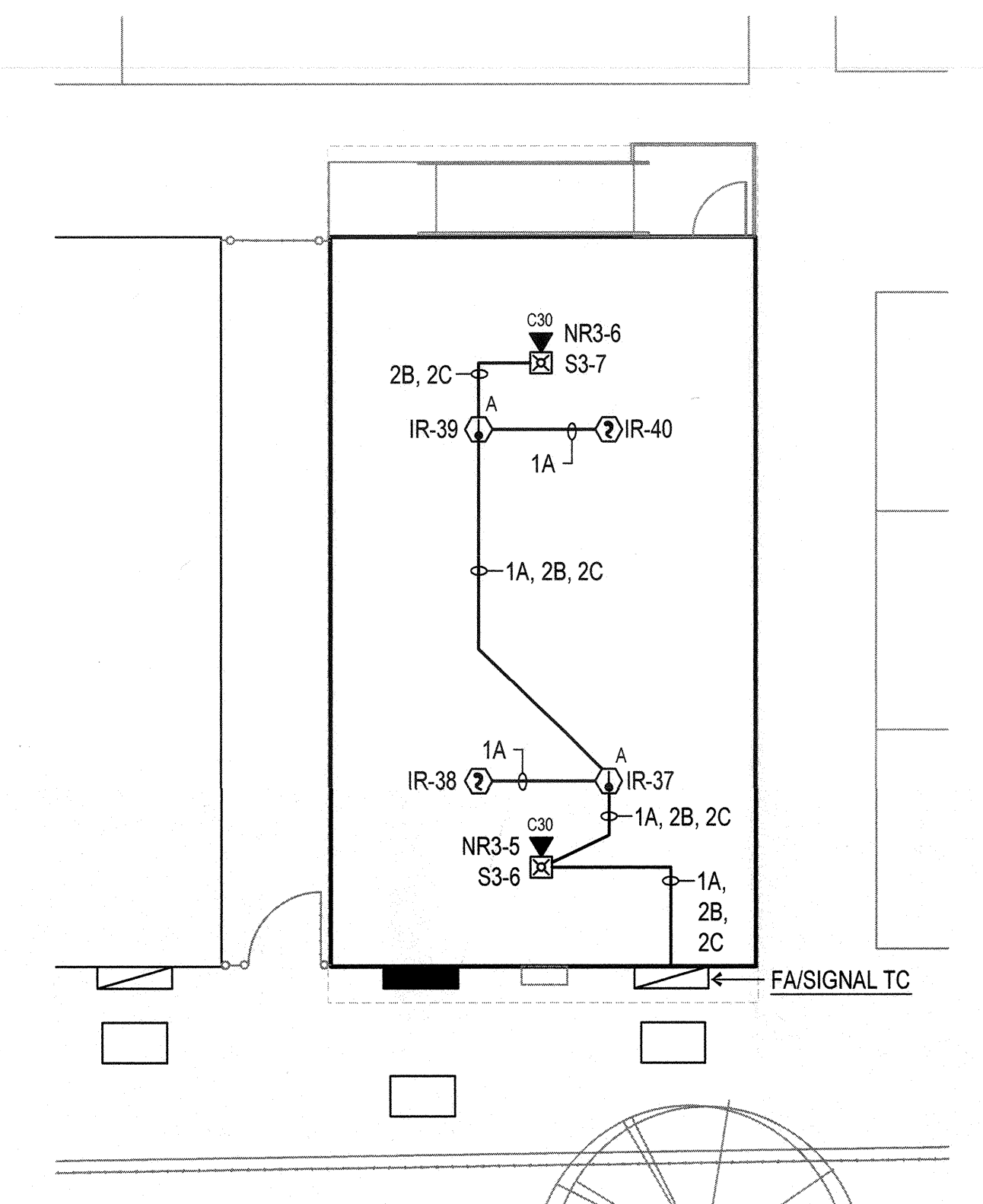
JOB NO. 1266  
DRAWN: R.L.M.  
CHECKED: D.P.G.  
DATE: 10/22/18  
2.00 OF SHEETS



**ELECTRICAL SITE PLAN**



**ELECTRICAL ROOM  
BLDG R1**  
SCALE: 1/4" = 1'-0"  
NORTH



**ENLARGED PLAN  
BLDG R16**  
SCALE: 1/8" = 1'-0"  
NORTH