

MARK	DATE	REVISIONS
△		
△		
△		

CHECK AND VERIFY ALL DIMENSIONS BEFORE PROCEEDING WITH THE WORK. REPORT DISCREPANCIES TO THE ARCHITECT. ALL CONSTRUCTION SHALL CONFORM TO THE C.B.C.

SITE IMPROVEMENTS FOR (1) 24' x 40' MODULAR BUILDING AT HORACE MANN ELEMENTARY SCHOOL
 271 0 NILES ST, BAKERSFIELD, CA, 93306
FOR BAKERSFIELD CITY SCHOOL DISTRICT
 BAKERSFIELD KERN COUNTY, CALIFORNIA

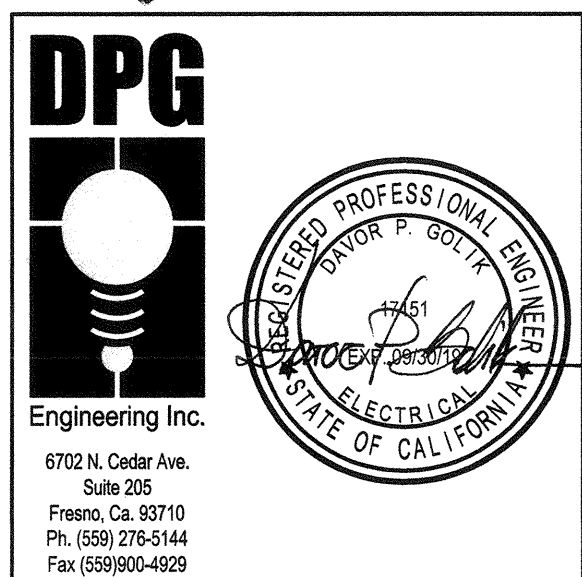
IDENTIFICATION STAMP
 DIV. OF THE STATE ARCHITECT
 OFFICE OF REGULATION SERVICES
 APR 03-119917
 FILE: 15-6
 DATE: APR 9 4 2019
 PTN: .63321-339



1601 NEW STINE ROAD, SUITE 280
 BAKERSFIELD, CA 93309
 PH: (661) 397-4377
 FAX: (661) 397-4378
 WWW.SCARCHITECT.COM



STEPHEN J. COLGAN, N.CARB, No. 16782 - AP BD+C



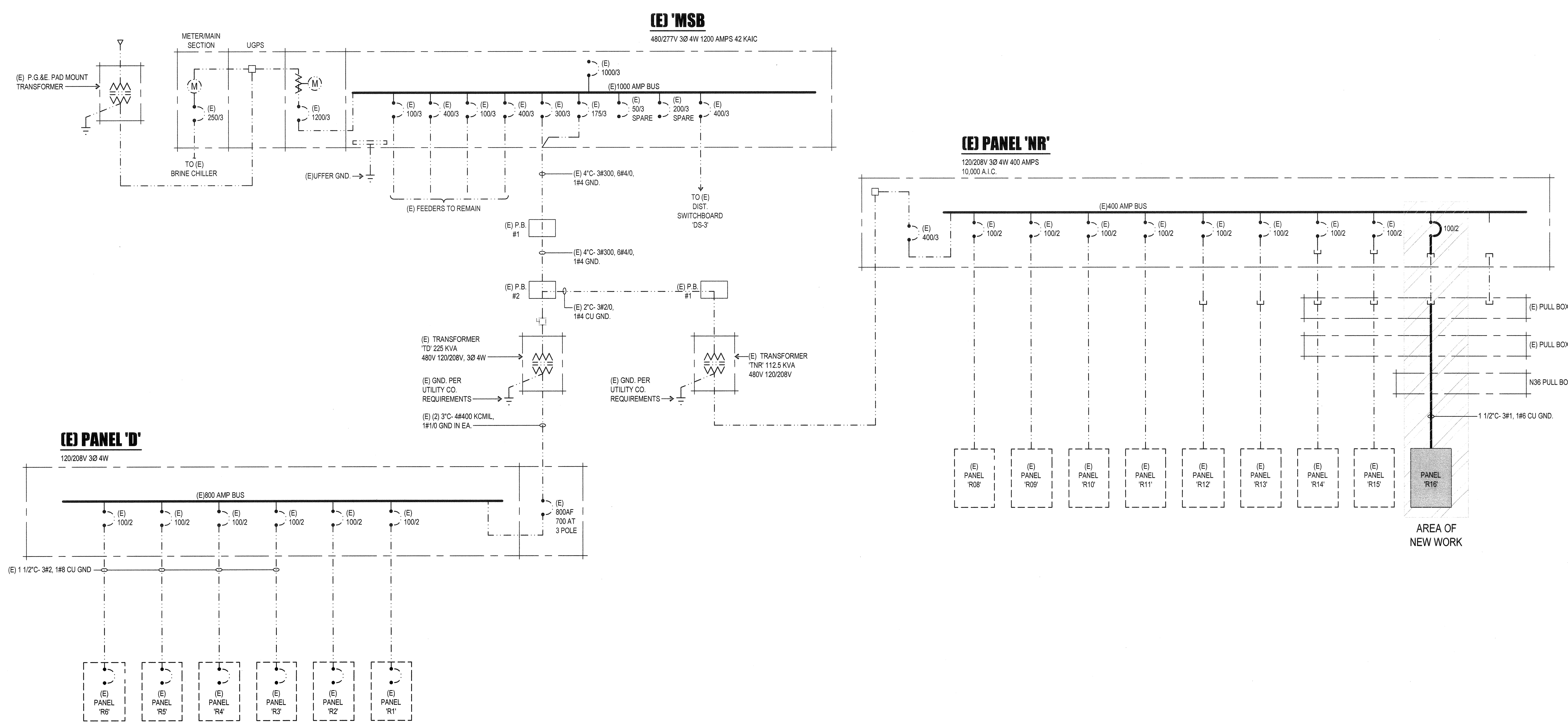
ELECTRICAL SINGLE LINE DIAGRAM

JOB NO. 1266
 DRAWN: R.L.M.
 CHECKED: D.P.G.
 DATE: 10/22/18

1.01
 OF SHEETS

AMPS	CONDUIT AND CONDUCTORS (THHN/THWN CU)					GROUNDING	
	PVC, EMT OR GRP	10 3W (13)	30 3W (33)	30 4W (34)	30 5W (35)	NYLON PULL LINE (NPL)	(THHN/THWN) COPPER PER CONDUIT
40	3/4"	3 #8	3 #8	4 #8	NA	1	#10
50	3/4"	3 #8	3 #8	4 #8			#10
70	1 1/4"	3 #8	3 #8	4 #8			#8
80	1 1/4"	3 #8	3 #8	4 #8			#8
90	1 1/4"	3 #8	3 #8	4 #8			#8
100	1 1/2"	3 #1	3 #1	4 #1			#6
125	1 1/2"	3 #1	3 #1	4 #1			#6
150	2"	3 #10	3 #10	4 #10			#6
175	2"	3 #20	3 #20	4 #20			#4
200	2"	3 #30	3 #30	4 #30			#4
225	2 1/2"	3 #40	3 #40	4 #40			#2
250	3"	3 #250 Kcmil	3 #250 Kcmil	4 #250 Kcmil			#2
300	3 1/2"	3 #350 Kcmil	3 #350 Kcmil	4 #350 Kcmil			#10
400	4"	3 #600 Kcmil (EA)	3 #600 Kcmil (EA)	4 #600 Kcmil (EA)			#20
500	(2) 3"	3 #250 Kcmil (EA)	3 #250 Kcmil (EA)	4 #250 Kcmil (EA)			#20
600	(2) 3 1/2"	3 #350 Kcmil (EA)	3 #350 Kcmil (EA)	4 #350 Kcmil (EA)			#20
700	(2) 4"	3 #500 Kcmil (EA)	3 #500 Kcmil (EA)	4 #500 Kcmil (EA)			#20
800	(2) 4"	3 #600 Kcmil (EA)	3 #600 Kcmil (EA)	4 #600 Kcmil (EA)			#20
1000	(3) 3 1/2"	3 #400 Kcmil (EA)	3 #400 Kcmil (EA)	4 #400 Kcmil (EA)			#30
1200	(4) 3 1/2"	3 #350 Kcmil (EA)	3 #350 Kcmil (EA)	4 #350 Kcmil (EA)			#30
1600	(4) 4"	3 #600 Kcmil (EA)	3 #600 Kcmil (EA)	4 #600 Kcmil (EA)			#40
2000	(5) 4"	3 #600 Kcmil (EA)	3 #600 Kcmil (EA)	4 #600 Kcmil (EA)			#40

FEEDER AMPS: 2000, 35
 CONDUCTOR TYPE (30 5W)
 NOTE: 3.5W FEEDERS ARE (A, B, C) AND TWO NEUTRAL CONDUCTORS FOR NON LINEAR LOAD APPLICATIONS.



POWER SINGLE LINE DIAGRAM

NOT TO SCALE 1/8"=1'-0"