

MARK	DATE	REVISIONS
△		
△		

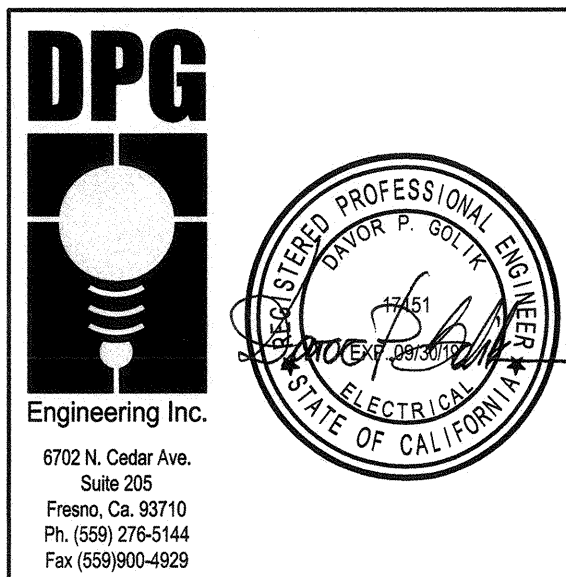
CHECK AND VERIFY ALL DIMENSIONS BEFORE PROCEEDING WITH THE WORK. REPORT DISCREPANCIES TO THE ARCHITECT. ALL CONSTRUCTION SHALL CONFORM TO THE C.B.C.

**SITE IMPROVEMENTS FOR (1) 24' x 40' MODULAR BUILDING AT**  
**HORACE MANN ELEMENTARY SCHOOL**  
 2710 NILES ST, BAKERSFIELD, CA, 93306  
 FOR  
**BAKERSFIELD CITY SCHOOL DISTRICT**  
 BAKERSFIELD KERN COUNTY, CALIFORNIA

IDENTIFICATION STAMP  
 DIV. OF THE STATE ARCHITECT  
 OFFICE OF REGULATION SERVICES  
 FILE: 15-6  
 DATE: APR 30 2019  
 PTN: 63321-339



1601 NEW STINE ROAD, SUITE 280  
 BAKERSFIELD, CA 93309  
 PH: (661) 397-4377  
 FAX: (661) 397-4378  
 WWW.SCARCHITECT.COM



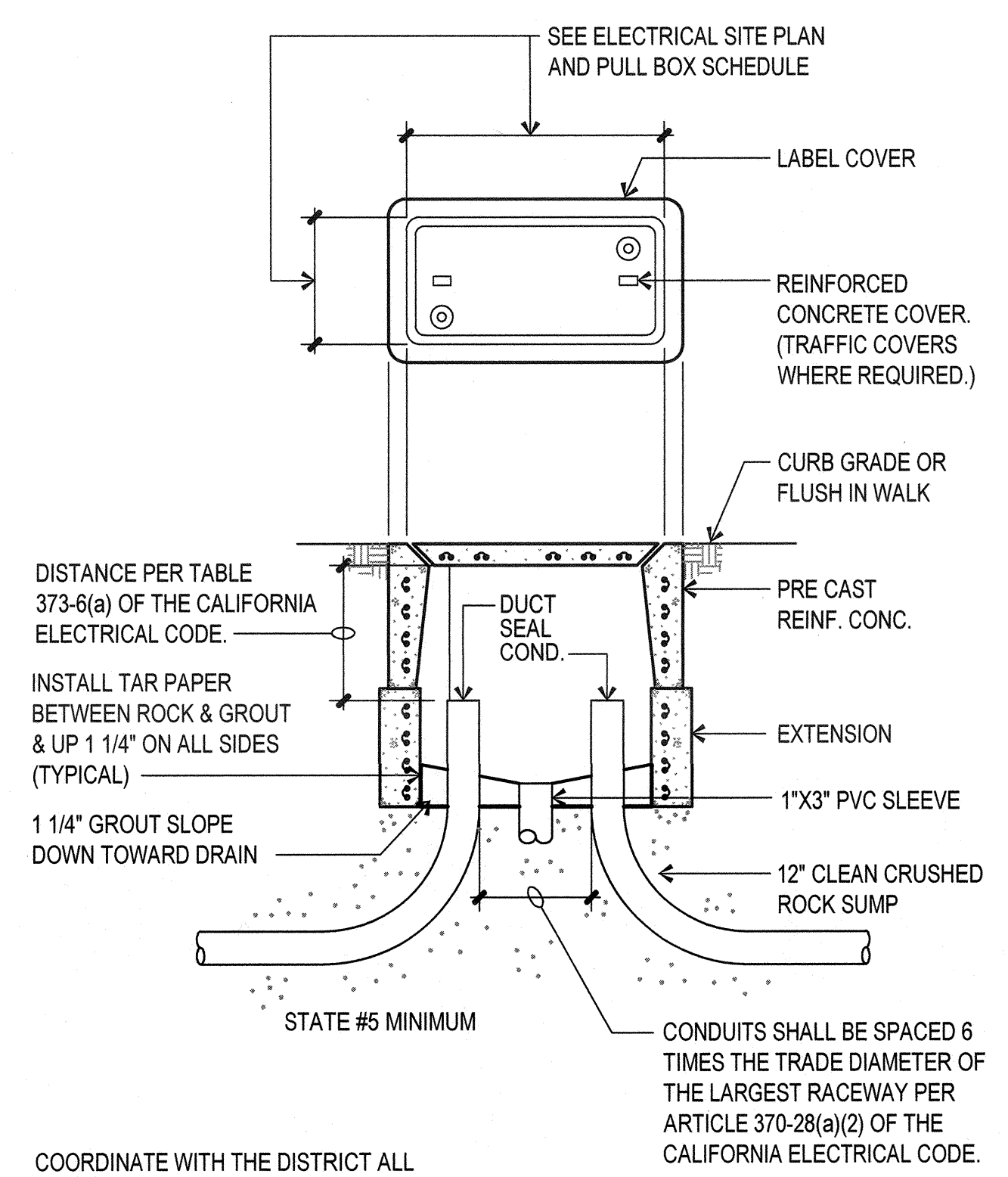
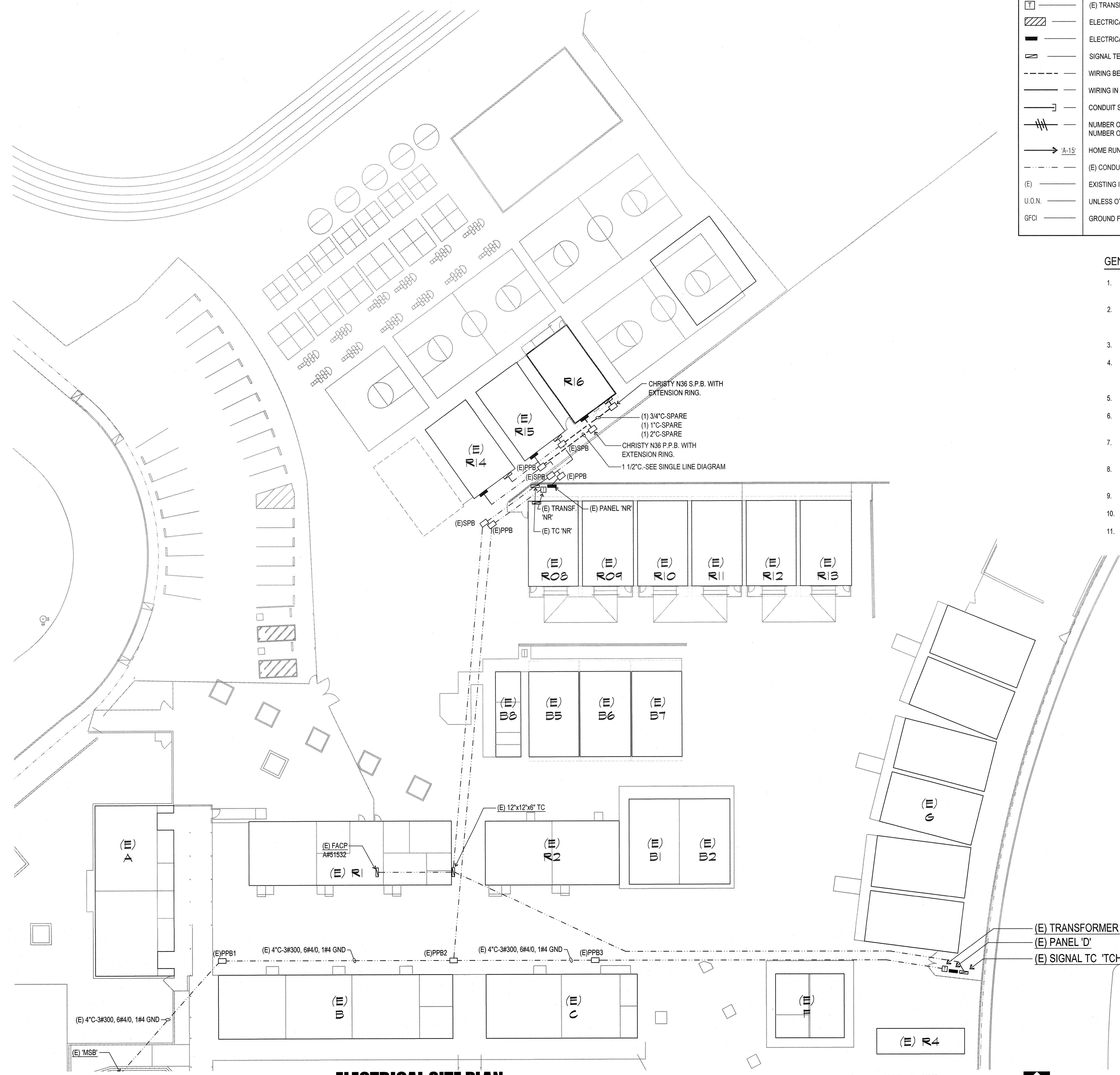
**ELECTRICAL SITE PLAN**

JOB NO. 1266  
 DRAWN: R.L.M.  
 CHECKED: D.P.G.  
 DATE: 10/22/18  
**1.00**  
 OF SHEETS

SYMBOL SCHEDULE		
SYMBOL	NAME	DESCRIPTION
	(E) TRANSFORMER	REFER TO SINGLE LINE DIAGRAM
	ELECTRICAL SWITCHBOARD	REFER TO SINGLE LINE DIAGRAM
	ELECTRICAL PANEL	REFER TO PANEL SCHEDULE
	SIGNAL TERMINAL CABINET	SEE PLANS
	WIRING BELOW GRADE	3/4" CONDUIT MINIMUM, REFER TO SPECIFICATIONS
	WIRING IN WALL OR CEILING	3/4" CONDUIT MINIMUM, REFER TO SPECIFICATIONS
	CONDUIT STUB AND CAP	
	NUMBER OF HASH MARKS DENOTES NUMBER OF CONDUCTORS	
	HOME RUN	TO PANEL 'A' CIRCUIT '15'
	(E) CONDUIT TO REMAIN	
	(E) EXISTING ITEM	
	U.O.N.	UNLESS OTHERWISE NOTED
	GFCI	GROUND FAULT CIRCUIT INTERRUPTER

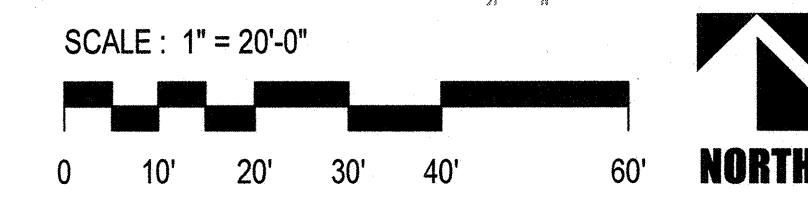
**GENERAL NOTES:**

- ALL COMMUNICATION AND SIGNAL CONDUCTORS AND CABLES SHALL BE PULLED TO HEAD-IN EQUIPMENT OF EACH SYSTEM AS REQUIRED.
- CONTRACTOR SHALL EXTEND ALL SIGNAL AND FIRE ALARM SYSTEMS AS REQUIRED. MODIFY HEAD-IN EQUIPMENT TO ACCOMMODATE NEW PORTABLES AS REQUIRED. VERIFY WITH B.C.S.D. THE CONDITION AND EXPANSIBILITY OF ALL HEAD-IN EQUIPMENT PRIOR TO BID. MODIFY ACCORDINGLY.
- CALL USA UNDERGROUND ALERT AND VERIFY WITH DISTRICT PRIOR TO TRENCHING.
- THE CONTRACTOR SHALL EXAMINE THE SITE AND EXISTING CONDITIONS AND MAKE ALLOWANCES IN THE BID FOR ANY CONDITIONS NOT SHOWN ON THE ELECTRICAL DOCUMENTS. REFER TO ELECTRICAL SPECIFICATIONS.
- THE CONTRACTOR SHALL COORDINATE PULL BOX LOCATIONS WITH DISTRICT PRIOR TO ROUGH IN.
- ALL SURFACE CONDUIT SHALL BE SUPPORTED WITH 2-HOLE STRAPS OR UNISTRUT CLAMP. 1-HOLE STRAPS ARE UNACCEPTABLE.
- ALL EXISTING EQUIPMENT REPLACED AND REMOVED SHALL BE DELIVERED TO THE DISTRICT MAINTENANCE DEPARTMENT.
- PROVIDE BLANK COVERS ON ALL J-BOXES WHERE EXISTING EQUIPMENT OR DEVICES WERE REMOVED.
- ALL CONDUITS TO BE 24" BELOW FINISHED GRADE CAPPED WITH 4" OF CONCRETE.
- ALL CONDUIT LOCATIONS ARE DIAGMATIC FIELD VERIFY FOR BEST ROUTING.
- EXISTING SOURCE OF POWER HAS BEEN INVESTIGATED AND IS ADEQUATE FOR ADDITIONAL LOAD.



COORDINATE WITH THE DISTRICT ALL LOCATIONS AT UNDERGROUND PULL BOXES PRIOR TO INSTALLATION.

**ELECTRICAL SITE PLAN**



**PULL BOX DETAIL**

1  
 NOT TO SCALE E1.00