

FLOOR PLANS (24x40)  
SCALE: 1/4" = 1'-0"

**KEYNOTES**

- 1 EXTERIOR DOOR - SEE SHEET 41
- 2 ALUMINUM SLIDER WINDOW - SEE SHEET 41
- 3 WALL MOUNTED ELECTRIC HEAT PUMP - SEE SHEET 41
- 4 SEE SHEET 41 FOR ELECTRICAL PLAN
- 5 HALL CLOACK - SEE SHEET 41
- 6 FINISH FLOORING - SEE SHEET 41
- 7 FIRE EXTINGUISHER - 2 B DRY CHEMICAL WITH 2A-B-C-U RATINGS. P.E. HANDLE 8 1/2" A.F.F.
- 8 NOT USED
- 9 HARDWAREBOARD - SEE SHEET 41
- 10 ELECTRICAL PANEL - V - SEE SHEET 41
- 11 26 GA. GUTTER AND DOWNPOUT.
- 12 VENTILATED CLOSE-OFF BATTI.
- 13 HVAC RETURN.
- 14 THERMOSTAT - SEE SHEET 41
- 15 ACCESS SIGN (SEE DETAIL IN SHEET 53.0)

NOTE:  
1. ALL WORK SHALL BE ACCORDING TO THE STANDARD SPECIFICATIONS FOR CONSTRUCTION OF MODULAR BUILDINGS.  
2. ALL WORK SHALL BE ACCORDING TO THE STANDARD SPECIFICATIONS FOR CONSTRUCTION OF MODULAR BUILDINGS.  
3. ALL WORK SHALL BE ACCORDING TO THE STANDARD SPECIFICATIONS FOR CONSTRUCTION OF MODULAR BUILDINGS.  
4. ALL WORK SHALL BE ACCORDING TO THE STANDARD SPECIFICATIONS FOR CONSTRUCTION OF MODULAR BUILDINGS.  
5. ALL WORK SHALL BE ACCORDING TO THE STANDARD SPECIFICATIONS FOR CONSTRUCTION OF MODULAR BUILDINGS.

CBC 1998



D.S.A.

D.S.A.  
REGISTRATION NUMBER  
04 - 1010551  
DATE OF EXPIRATION  
12/31/2004  
DATE OF ISSUANCE  
12/31/2003

PORTION 1  
REGISTRATION NUMBER  
105678  
DATE OF EXPIRATION  
12/31/2004  
DATE OF ISSUANCE  
12/31/2003

STRUCT. ENGINEER  
ARCHITECT  
LEONIE DAVIS 11/1/2003

CHANGE ORDER

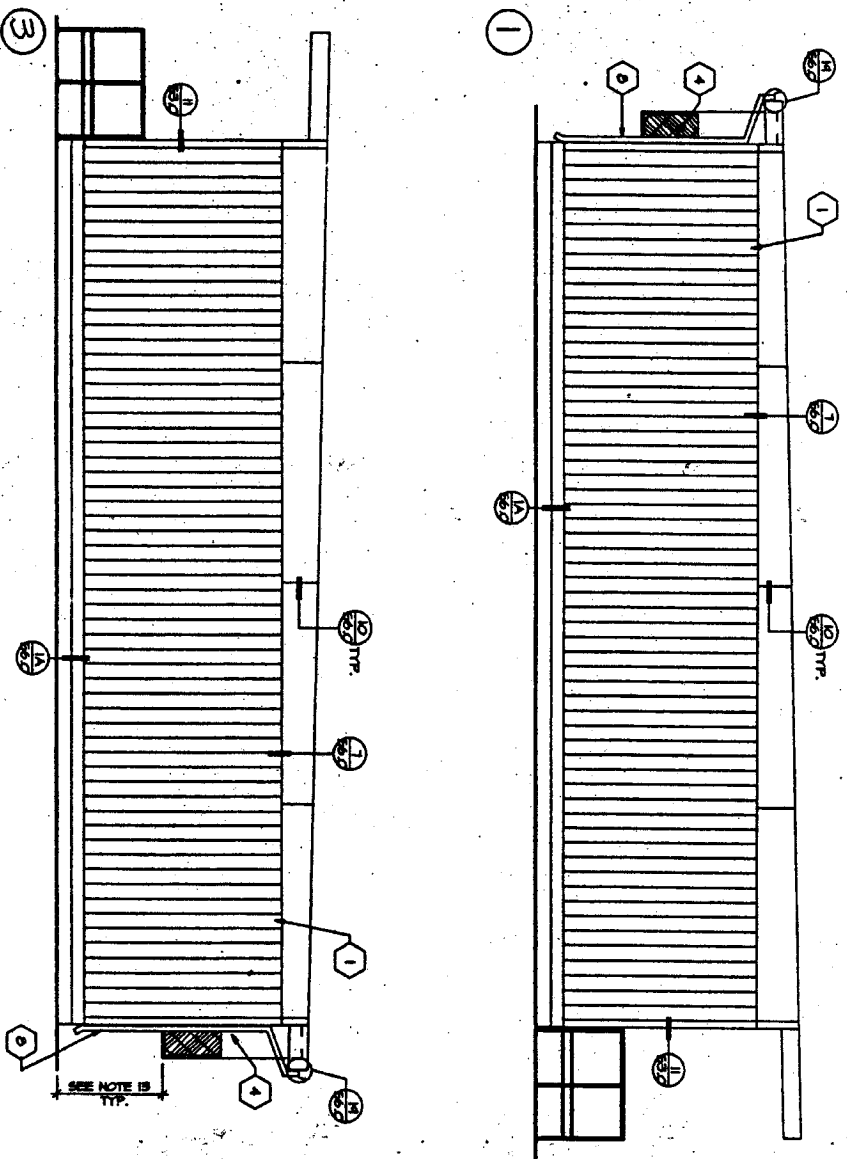
CHECKED BY

18833 Kromeris Ave., Riverside, CA. 92504  
Phone (908) 788-7198  
Fax (908) 788-0263

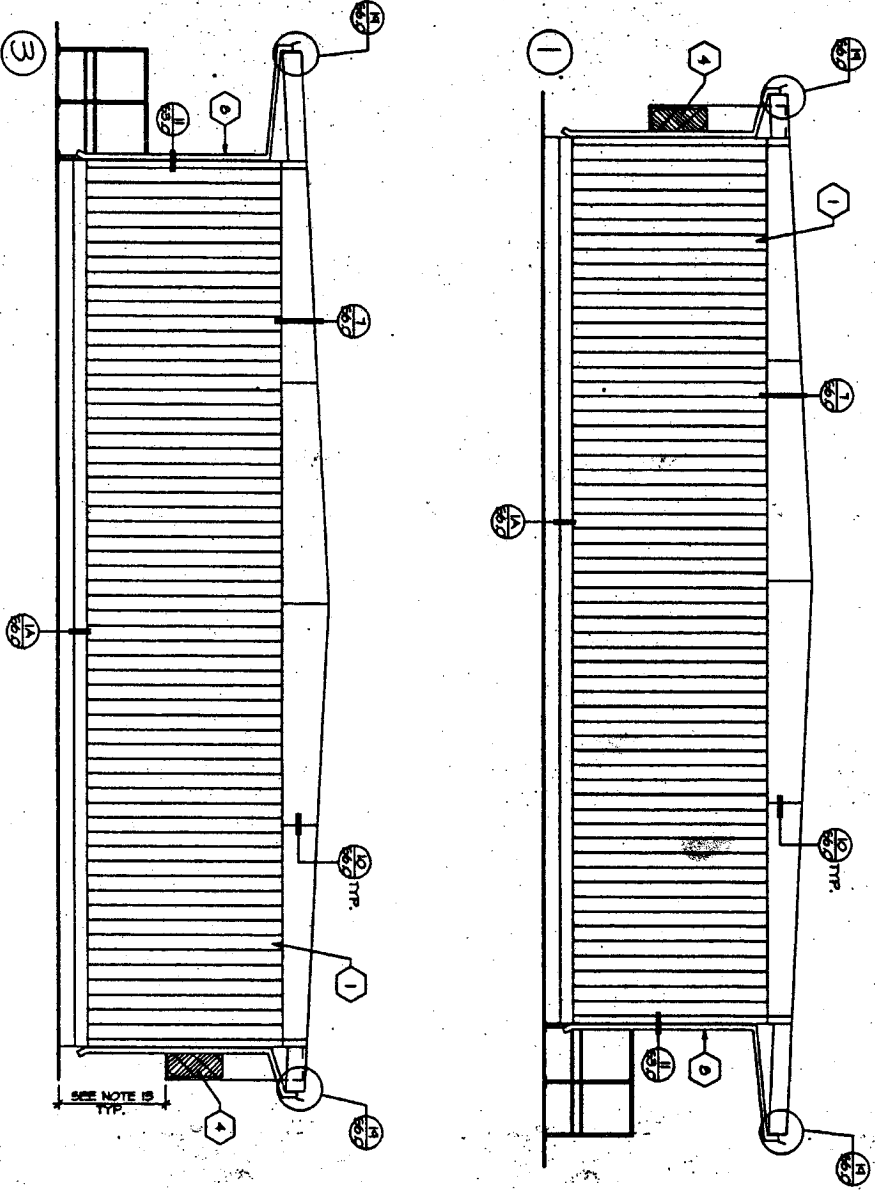
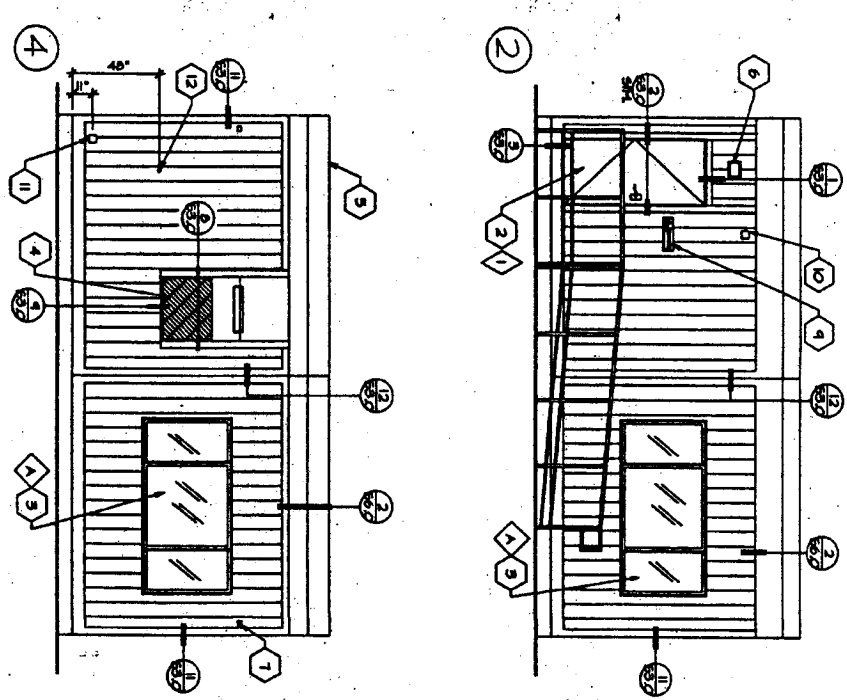
**TURORA MODULAR INDUSTRIES**

FLOOR PLAN  
(24x40)

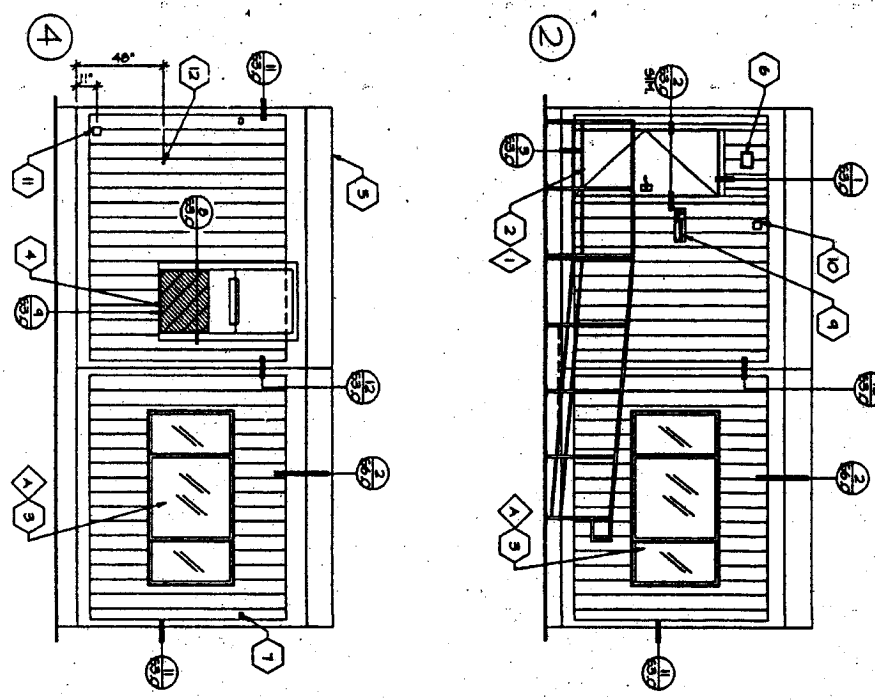
A.I.O.  
SHEET  
DATE



EXTERIOR ELEVATIONS (MONO SLOPE) 24X40  
SCALE 1/8" = 1'-0"



EXTERIOR ELEVATIONS (GABLE) 24X40  
SCALE 1/8" = 1'-0"



KEYNOTES

- 1 TYPICAL EXTERIOR FINISH- SEE SHEET 41
- 2 EXTERIOR DOOR- SEE SHEET 41
- 3 ALUMINUM SLIDER WINDOW- SEE SHEET 41
- 4 WALL MOUNTED ELECTRIC HEAT PUMP- SEE SHEET 40 OR 17
- 5 MECHANICAL PANELS- SEE SHEET 41
- 6 EXTERIOR LIGHT MOUNTED ABOVE DOOR- SEE SHEET 41
- 7 METAL TAG ON ALL HOLES MECHANICALLY ATTACHED TO EXTERIOR OF ROOF FRAME & 6" O" AFF. SHOWING DIM. APP. 1" MANUFACTURERS HAVE AND UNIT SERIAL NUMBER.
- 8 26 GA. DOWNPOUT.
- 9 ACCESS SIGN (SEE DETAIL 14 SHEET 53.0) NOT BY PORTABLE MANUFACTURER
- 10 FIRE ALARM HORN OR BELL LOCATED 8'-6" ON THE EXTERIOR. CONDUIT TO BE STRIPPED INTO SPACE ONLY.
- 11 JUNCTION BOX FOR FIRE ALARM- SEE SHEET 51.0
- 12 ELECTRICAL POINT OF CONNECTION
- 13 IF HANG LIGHT IS LOCATED IN ANY PART OF TRAILER, PROVIDE PROTECTION FROM OVERHEAD HANGARD IF DIMENSION IS GREATER THAN 37" A.F.S.

NOTE:  
RAMP DESIGN ACCORDING TO STANDARD RAMP DESIGN SHOWN FOR CENTER FACE ONLY. SEE RAMP SHEETS FOR ALTERNATE RAMP DESIGN.

CBC-1998

PC

D.S.A.

D.S.A. 04-101055/1  
 PORTION 1  
 11/11/98  
 11/11/98  
 11/11/98

REGISTERED PROFESSIONAL ARCHITECT  
 STATE OF CALIFORNIA  
 NO. 11111  
 11/11/98

LIBERTY ENGINEERS  
 ARCHITECT

CHANGE ORDER

CHECKED BY

16833 Kromark Ave., Riverside, CA 92504  
 Phone (951) 789-7196  
 Fax (951) 789-0283  
**TURORA MODULAR INDUSTRIES**

EXTERIOR ELEVATIONS  
 (24x40)

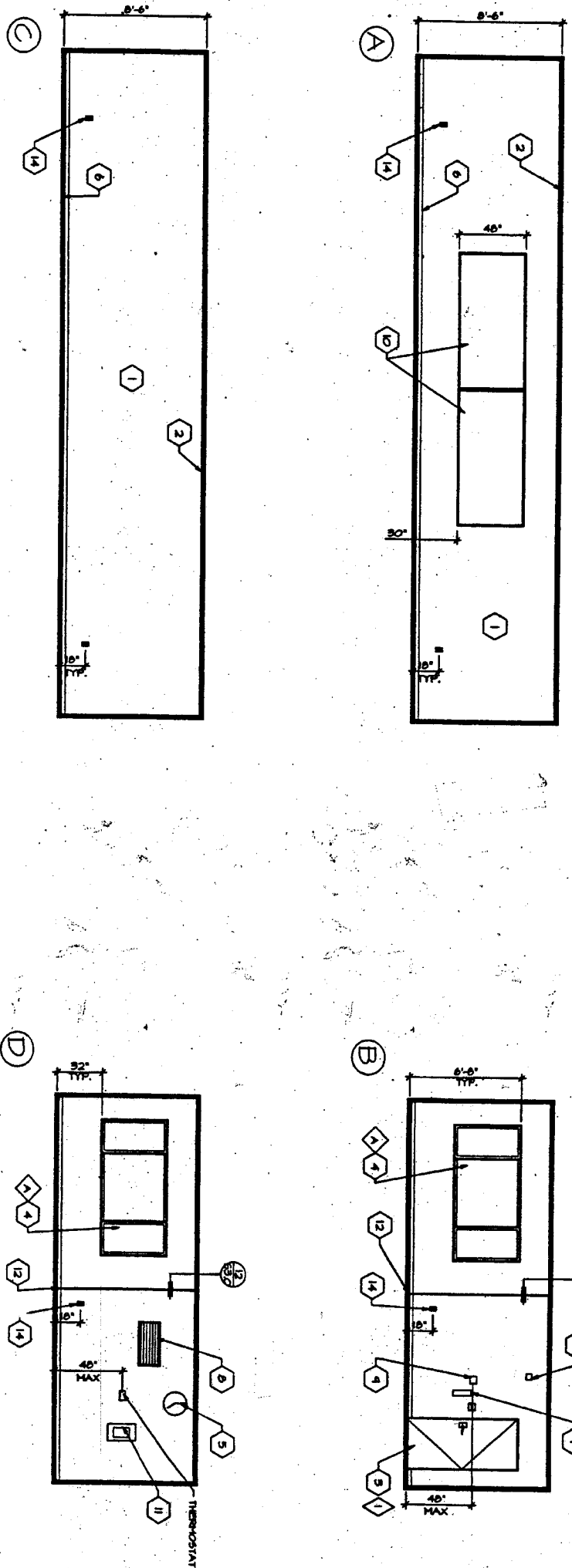
A2.0  
 SHEET

CBC 1998

PC

KEYNOTES

- 1 TYPICAL INTERIOR FINISH- SEE SHEET 41
- 2 TYPICAL CEILING MATERIAL- SEE SHEET 41
- 3 EXTERIOR DOOR- SEE SHEET 41
- 4 ALUMINUM SLIDER WINDOW- SEE SHEET 41
- 5 CLOCK-SEE SHEET 41
- 6 FINISH FLOORING- SEE SHEET 41
- 7 FIRE EXTINGUISHER- 2 B.DRY CHEMICAL WITH 2A- FOR C.L. HALLWAYS, 12 INCHES @ 45' A.P.F.
- 8 M/VAC RETURN
- 9 FIRE ALARM- ROLL STATION LOCATED @ 4'-0" ON THE INTERIOR, HORN OR BELL LOCATED @ 8'-6" ON THE EXT. CONDUIT TO BE STUBBED INTO ATTIC SPACE ONLY.
- 10 HANGERSBOARD - SEE SHEET 41
- 11 ELECTRICAL PANEL, V.- SEE SHEET 41
- 12 VENT. WRAPPED CLOSE-OFF BATT.
- 13 J-BOX FOR VISUAL WARNING DEVICE @ 60" A.P.F.
- 14 - ELECTRICAL OUTLET, SEE SHIT 41
- 15 - Electrical outlet located at shift line.



INTERIOR ELEVATIONS (24X40)  
SCALE 1/4" = 1'-0"  
1/8" SHOW  
5/8" OFFSHORE

D.S.A.

REGISTRATION BOARD  
STATE OF CALIFORNIA ARCHITECTS  
04-101085  
DATE: APR 23 1998

D.S.A.  
PORTION 1  
ARCHITECTURE  
DATE: APR 23 1998

STRUCT. ENGINEER  
ARCHITECT

CHANGE ORDER  
CHECKED BY

16833 Kromerle Ave., Riverside, CA. 92504  
Phone (800) 788-7196  
Fax (800) 788-0263

**URORA MODULAR INDUSTRIES**

INTERIOR  
ELEVATIONS  
(24x40)

AS.0  
SHEET



- KEYNOTES**
- 1 ROOFING- SEE SHEET #1
  - 2 26 GA. GUTTER AND DOWNSPOUT.

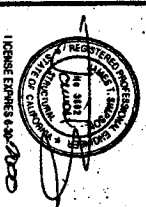
**CBC 1998**

**PC**

**D.S.A.**  
PORTION T

REGISTRATION EXAM  
OFFICE OF THE REGISTERED ARCHITECT  
STATE OF CALIFORNIA  
04-101055  
DATE: 04/15/98  
BY: [Signature]

IDENTIFICATION STRIP  
NO. 1086781  
DATE: 04/15/98  
BY: [Signature]



ARCHITECT

CHANGE ORDER

CHECKED BY

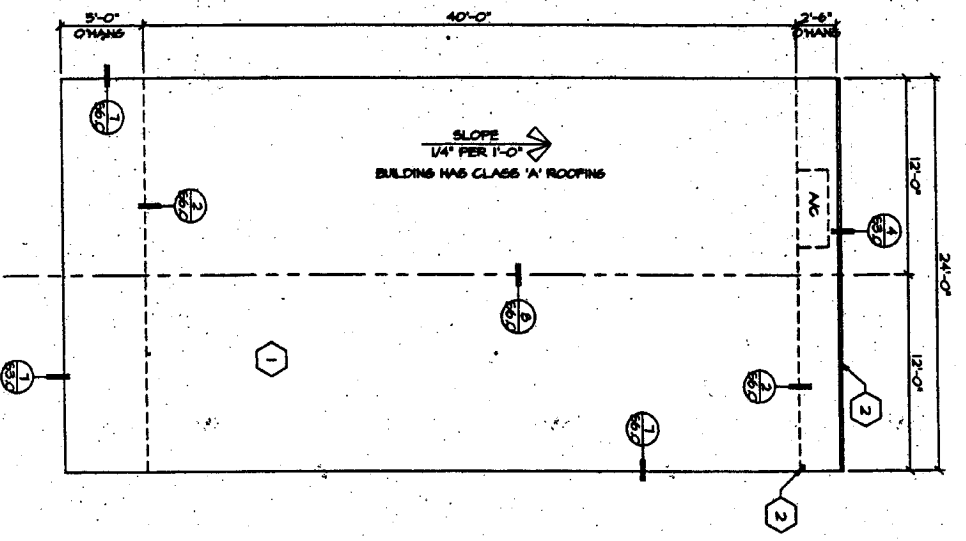
10833 Krameria Ave., Riverside, CA. 92504  
Phone (909) 788-7196  
Fax (909) 788-0283

**TURORA MODULAR INDUSTRIES**

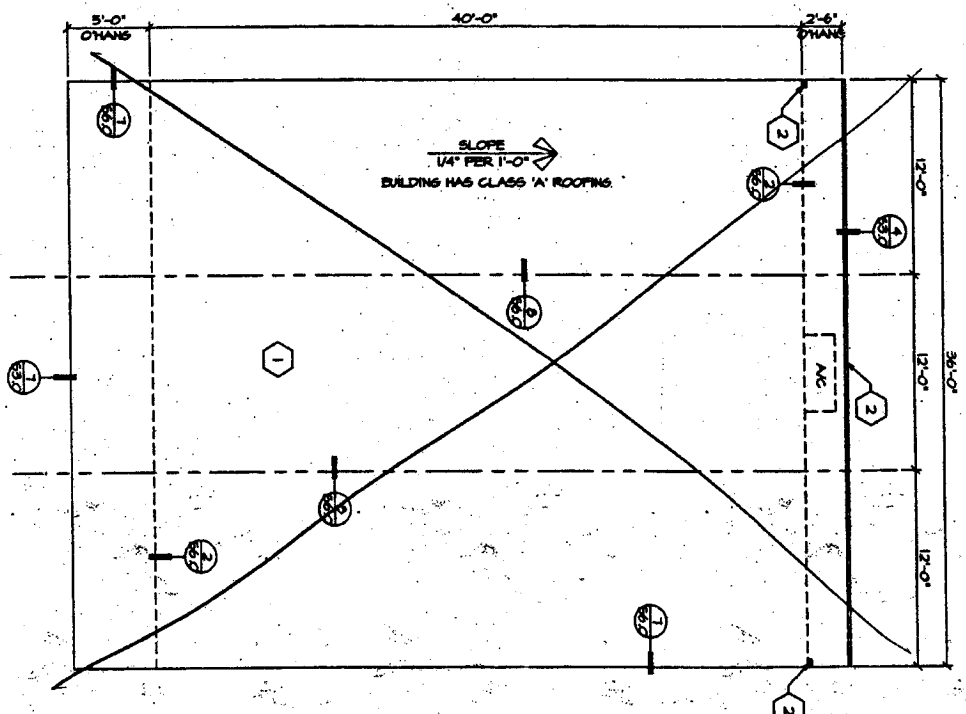
ROOF PLAN  
(MONO SLOPE)

**A4**

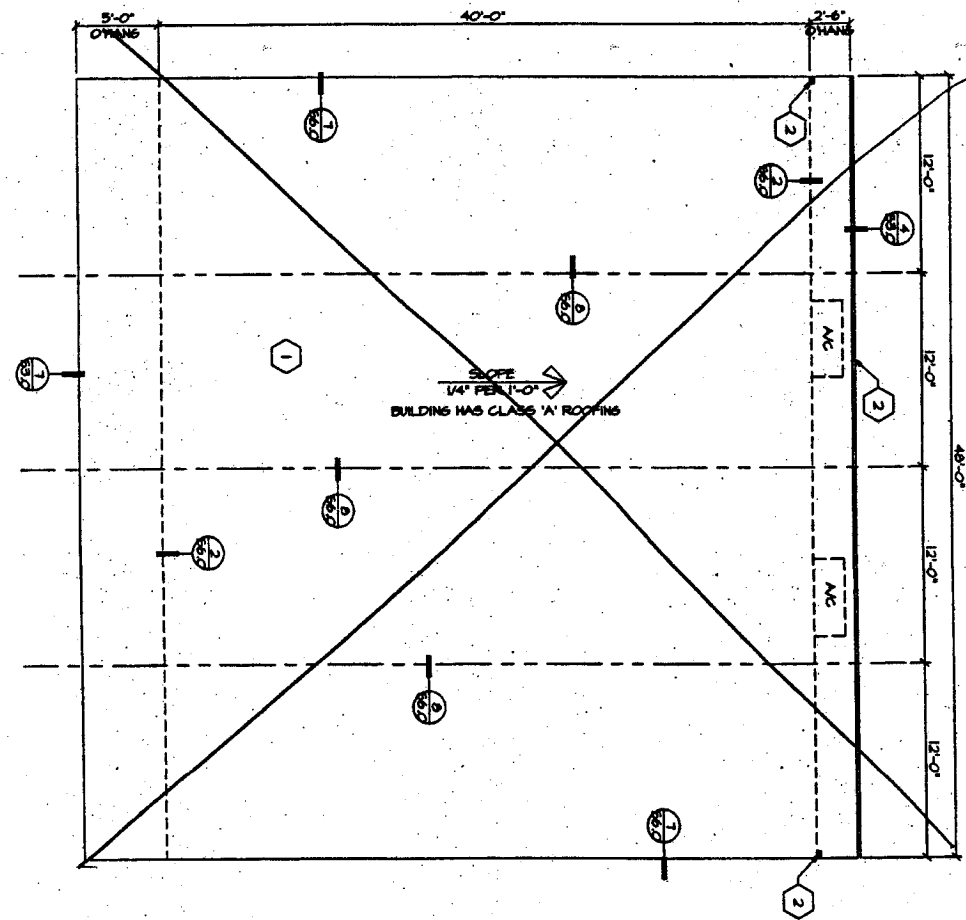
SHEET



~~24X40~~



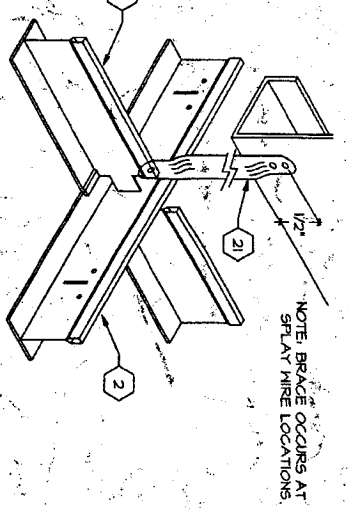
~~36X40~~



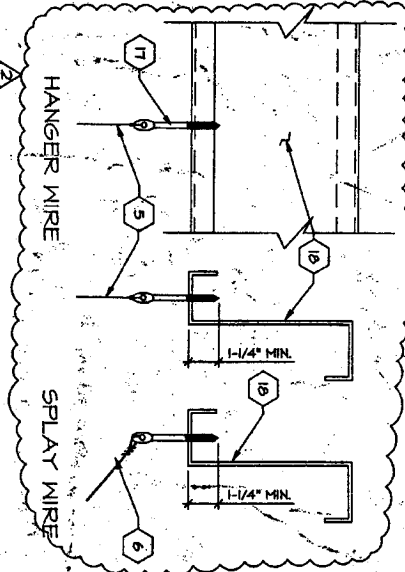
~~48X40~~

ROOF PLAN (MONO SLOPE)

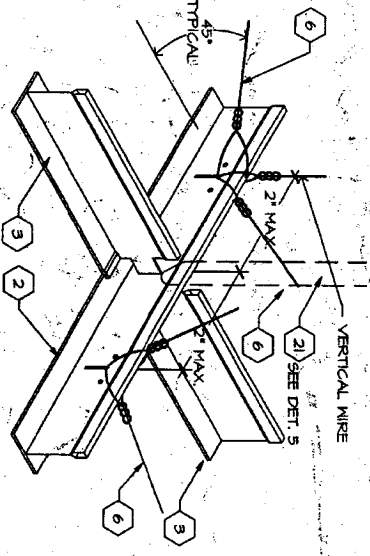
SCALE: 3/8" = 1'-0"



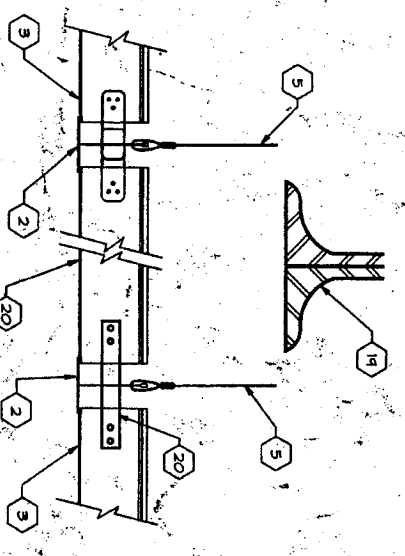
**VERTICAL BRACE**



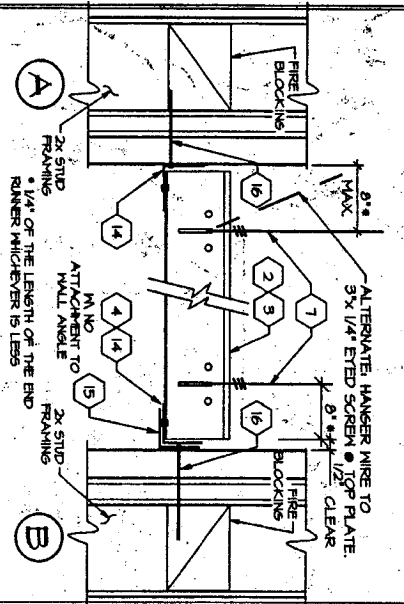
**ALT. WIRE ATTACHMENT**



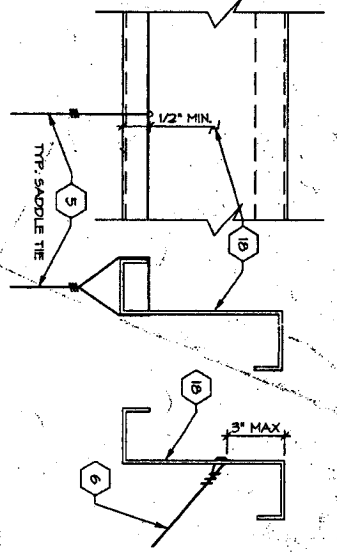
**SPLAY WIRE**



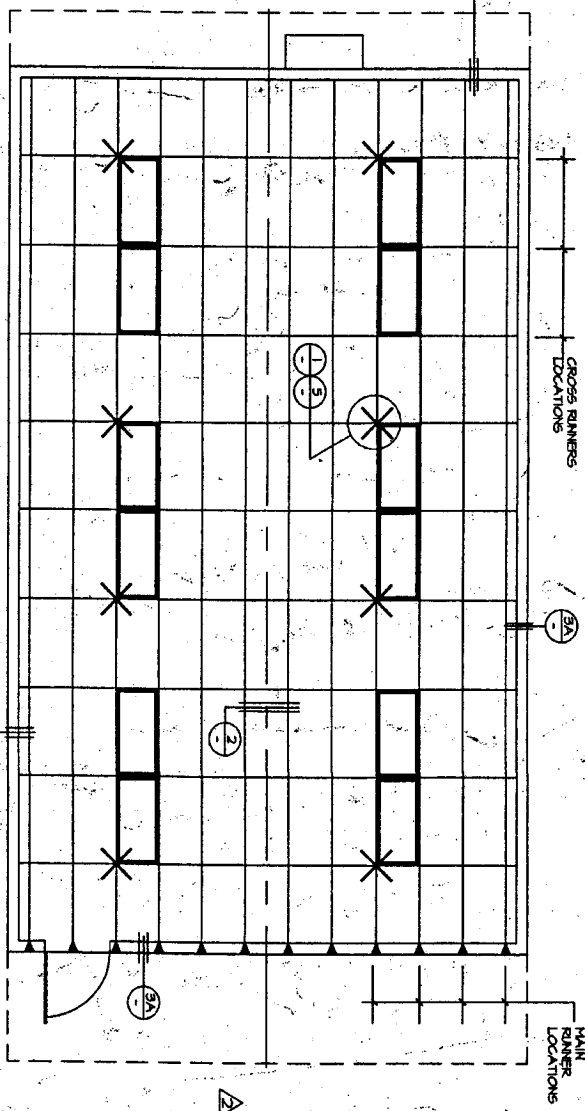
**GRID AT MODLINE**



**GRID AT WALL**



**ALT. WIRE ATTACHMENT**



**REFLECTED CEILING PLAN (24X40)**

A. UNIT SHOWN  
B. UNIT OPP. HAND

- 1 MAIN RUNNER - 1/2" O.D. MAX. WITH HANGER WIRES SPACED @ 4" O.C. MAX.
- 2 MAIN RUNNER, ABS-STROKES - 1501 HEAVY DUTY
- 3 CROSS RUNNER, ABS-STROKES - 1502 HEAVY DUTY
- 4 WALL RUNNER, ABS-STROKES 1500 D
- 5 TYPICAL HANGER WIRE TO BE 1/2" DIA. STEEL WIRE ATTACHED TO STRUCTURE ABOVE AND TO GRID WITH TIGHT TURNS WITHIN 1/2" - SEE DETAIL 4
- 6 TYPICAL SPLAY WIRE TO BE 1/2" DIA. STEEL WIRE ATTACHED TO STRUCTURE ABOVE AND TO GRID WITH TIGHT TURNS WITHIN 1/2" - SEE DETAIL 4
- 7 AT END OF BONE OF HANGERS A HANGER WIRE SHALL BE ATTACHED WITHIN 6" OF ANY WALL OR SCOFFED OR 1/4" LENGTH OF END THE WHICHEVER IS LEAST
- 8 VERTICAL WIRES MORE THAN 16" OUT OF PLUMB SHALL HAVE COUNTERSUNK WIRE NUTS INSTALLED.
- 9 HANGERS MAY BE ATTACHED TO WALL HOLDING AT (2) MODLINE IS TO ATTACHMENT THE WALL BEING CLEARENCE BETWEEN END RUNNER AND FACE OF WALL.
- 10 CEILING AREAS EVERY 144 SQ. FT. OR MORE SHALL HAVE SPLAY WIRES SHALL BE TIGHT BUT SHALL NOT DISTORT GRID.
- 11 ELECTRICAL SHALL PROVIDE (2) SLACK HANGER WIRES AT OPPOSITE CORNERS OF ALL LIGHT FIXTURES WIRES LIGHT FIXTURES SHALL BE ATTACHED TO CEILING GRID WITH (2) #8 SHEET METAL SCREWS.
- 12 EXCEPTOR, IF REQUIRED, SHALL BE RIGIDLY ATTACHED TO STRUCTURE ABOVE AT INTERVALS NOT TO EXCEED 4'
- 13 CEILING RESISTERS, WHEN INDICATED ON PLANS, SHALL BE ATTACHED TO STRUCTURE ABOVE PER NOTE 5.
- 14 ROOF WALL 70° ANGLE WITH POP RIVET TO EACH MEMBER
- 15 1/8" CONTINUOUS WALL ANGLE.
- 16 6d WALL @ 16" O.C. INTO BLOCK OR STUD.
- 17 1/2" x 1/2" x 1/2" SCREEN HOLES, 5-1 (D5A-A-000) FOR ATTACHMENT OF WIRES TO PARLUS
- 18 ROOF JOIST- SEE SHEET 54.0 OR 54.1
- 19 MODLINE ABOVE
- 20 CLOSE OFF CROSS TIE, INSERT ONE END OF CROSS TIE INTO GRID AND OTHER END INTO WALL AND SECURE WITH STRAP THROUGH MAIN RUNNER, SECURE TO CROSS TIE W/ (2) #8 TEK SCREWS AT EACH END.
- 21 VERTICAL BRACE- 1/2" STEEL CONDUIT AT SPLAY WIRE LOCATIONS, DRILL (2) 1/8" HOLES THRU CONDUIT @ TOP & BOTTOM ATTACH CONDUIT TO JOIST ABOVE W/ (2) #8 TEK SCREWS WITHIN 2" OF CROSS RUNNER

**KEYNOTE**  
CBC 1098

**D. REVISED**

IDENTIFICATION SYMBOL  
DATE OF THE REVISION  
04 - 101055  
DATE: APR 13 2004

D.S.A.

PORTION 1

STRICT ENGINEER

ARCHITECT

UNLESS OTHERWISE SPECIFIED  
USE: SPEC 6-30-1004

**CHANGE ORDER**  
A. ADDED JIF-E SCREEN  
ALTERNATE

CHECKED BY

16833 Krameria Ave., Riverside, CA. 92504  
Phone (951) 789-7196  
Fax (951) 789-0263

**TURORA-MODULAR INDUSTRIES**

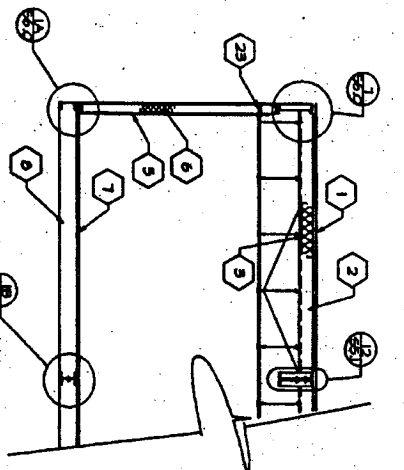
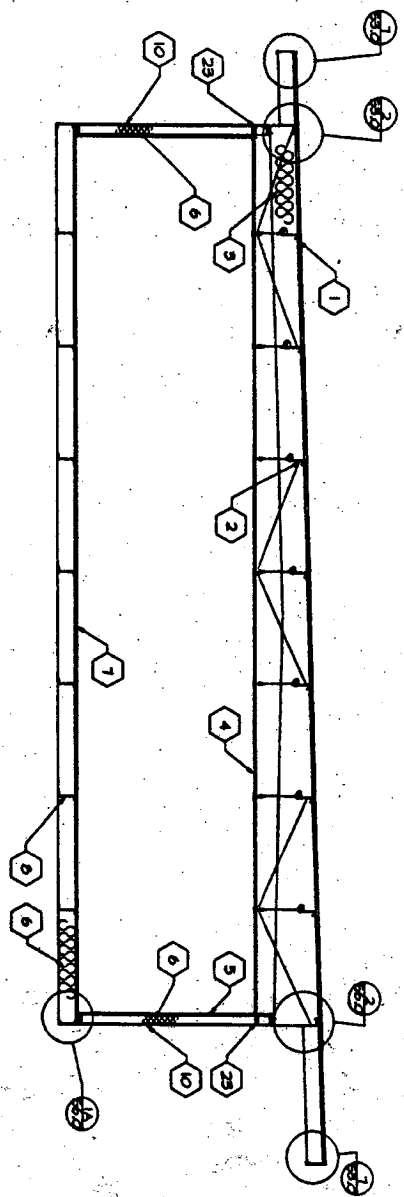
**REFLECTED CEILING PLAN (24x40)**

**A5.0**

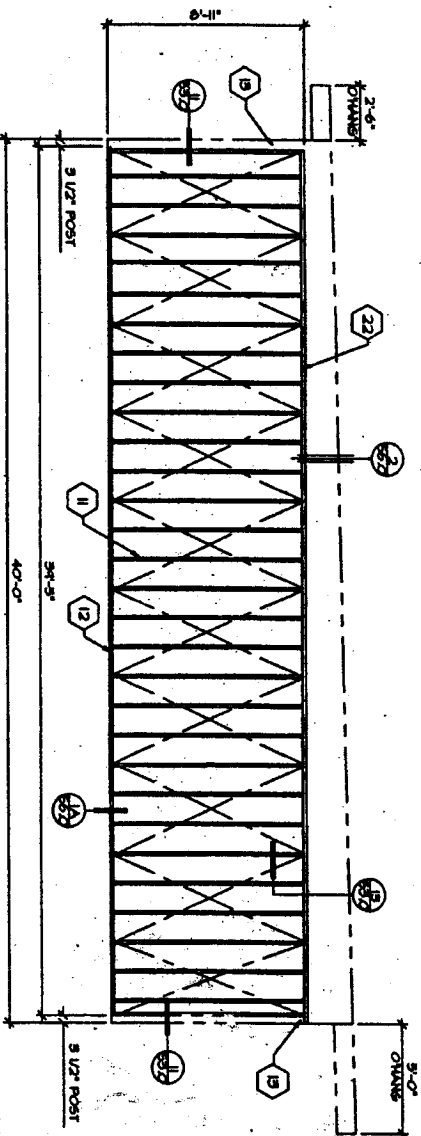
SHEET





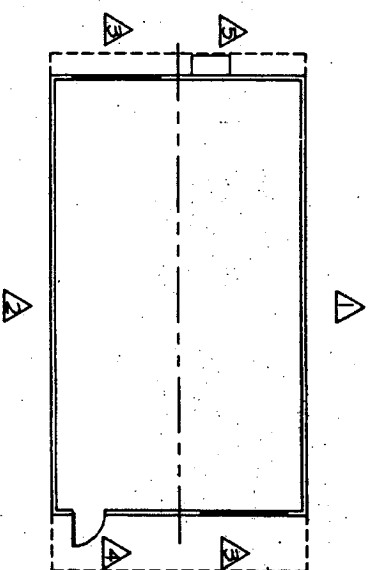


**BUILDING SECTIONS**  
SCALE: 1/4" = 1'-0"

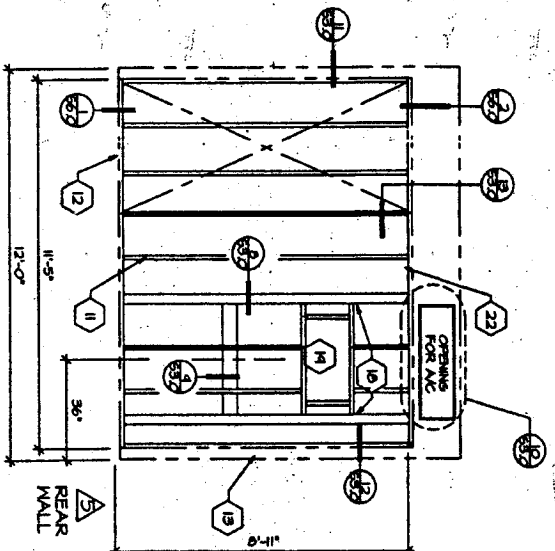
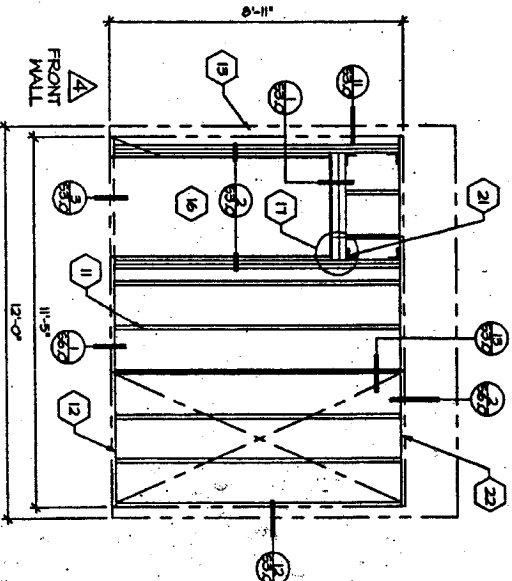
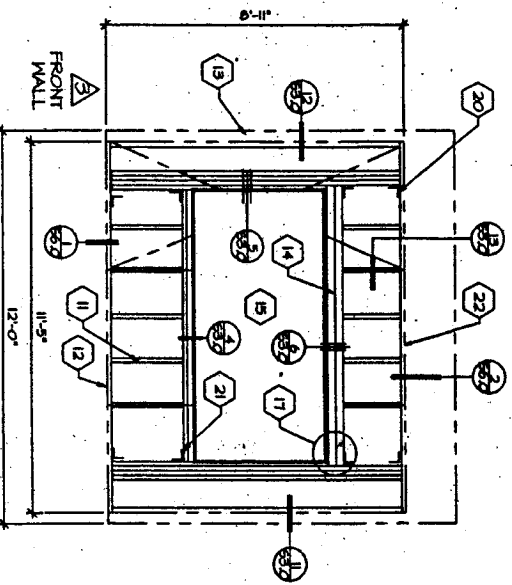


**TYPICAL SIDEWALL**  
SCALE: 1/4" = 1'-0"

WALL Δ SHOWN  
WALL Δ OPPOSITE HAND



**WALL LOCATIONS**  
SCALE: 1/8" = 1'-0"



**TYPICAL ENDWALLS**  
SCALE: 3/8" = 1'-0"

**KEYNOTES**

- 1 ROOF SHEATHING- SEE SHEET 41
- 2 STEEL ROOF JOIST- SEE SHEET 541
- 3 R-41 FIBERGLASS INSULATION ON HEAVY STRAPS.
- 4 SUPERDOD CEILING- SEE SHEET 410
- 5 TYPICAL INTERIOR FINISH- SEE SHEET 41
- 6 R-11 FIBERGLASS INSULATION
- 7 PLYWOOD FLOOR SHEATHING- SEE SHEET 541
- 8 STEEL FLOOR JOIST- SEE SHEET 541
- 9 NOT USED
- 10 PLYWOOD SLOPE/SHEATHING- SEE SHEET 40 FOR MATERIAL, WALL SIDING WITH CORROSION RESISTANT DOOR BOX NAILS & 6" BOARDING @ EDGES OF FIELD.
- 11 NOT USED
- 12 STUDS- 2x4 H.P. STUD SPACE @ 16" O.C.
- 13 BOTTOM PLATE- 2x4 H.P. STUD END, 1 BETTER.
- 14 WINDOW HEADER- (2) 2x4 H.P. STUD END, 1 BETTER.
- 15 WINDOW FRAME- SEE SHEET 541 'STRUCTURAL ELEVATIONS'
- 16 WINDOW FRAME- (2) 2x4 H.P. STUD END, 1 BETTER.
- 17 FRAMING FOR 6'-0" x 4'-0" WINDOW
- 18 USE (2) FULL HEIGHT H.P. 2x4 STUDS W/ 1 2x4 TRIMMER BOTH SIDES AND (2) 2x4 FLAT AT 80 FROM H. STUDS.
- 19 FRAMING FOR 3'-0" x 6'-0" DOOR. USE (2) FULL HEIGHT 2x4 JAMB STUDS WITH (1) 2x4 TRIMMER BOTH SIDES, & (2) 2x4 FLAT FOR HEADER. SEE DETAIL 1 SHEET 800.
- 20 FULL H.P. 2x4 (4) H.P. NAILS PER CONNECTION. TYPICAL AT CORNERS OF ALL OPENINGS.
- 21 4x4 H.P. POST
- 22 SEE SHEET 41 FOR A/C SIZE AND TORQUE/HEAVY DUTY PLATE
- 23 SHIPSON A/B CLIPS (4) PLACES TO TOP AND BOTTOM PLATES.
- 24 SHIPSON A/B CLIPS (4) PLACES TO WINDOW SILL AND HEADER OR (2) PLACES TO DOOR HEADER.
- 25 2x4 PLATE- H.P. STAYDOWN OR BETTER.
- 26 FIRE BLOCKING PER SEC. 708, 1944 C.B.C.
- 27 4x4 H.P. POST

NOTE: WHEN BUILDING WIND LOAD IS SOVERNI USE D.P. 42 HOOD MEMBERS.

CBC 1998

PC

D.S.A.  
REGISTRATION NUMBER  
04-101055  
DATE: JUN 23 1992

D.S.A.  
ROXTON 1  
REVISIONS  
DATE: 11 23 1992

ARCHITECT  
LORNE SPENCER 199 7000

CHANGE ORDER

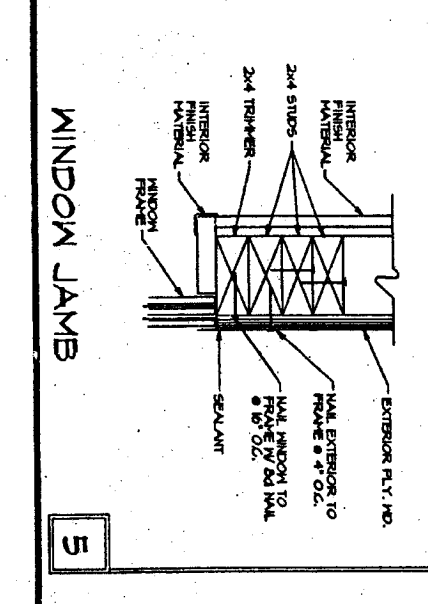
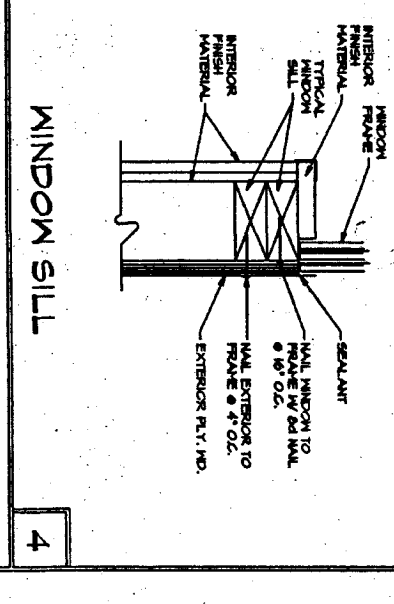
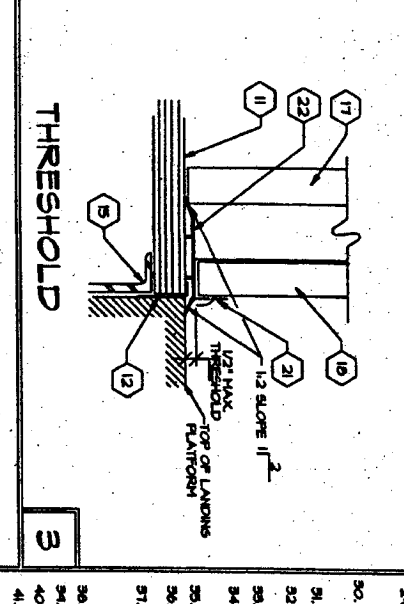
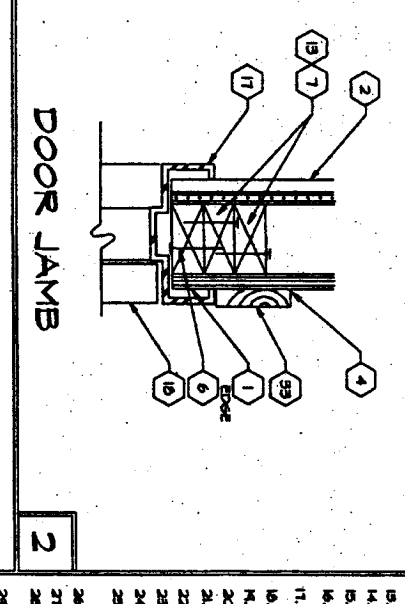
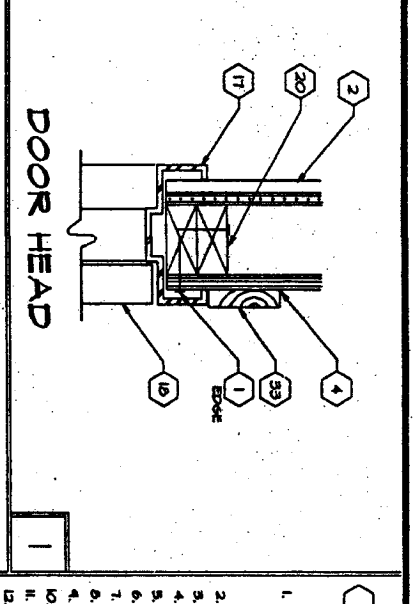
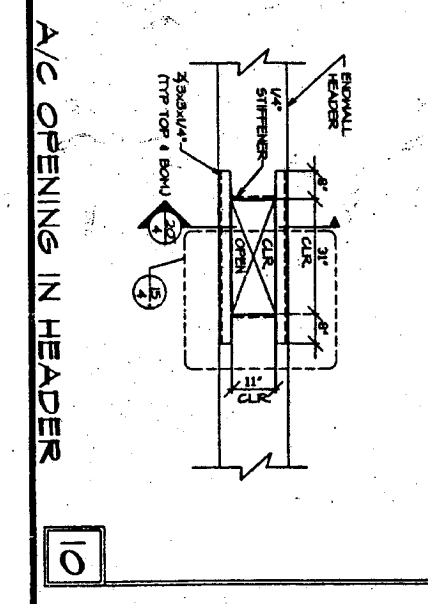
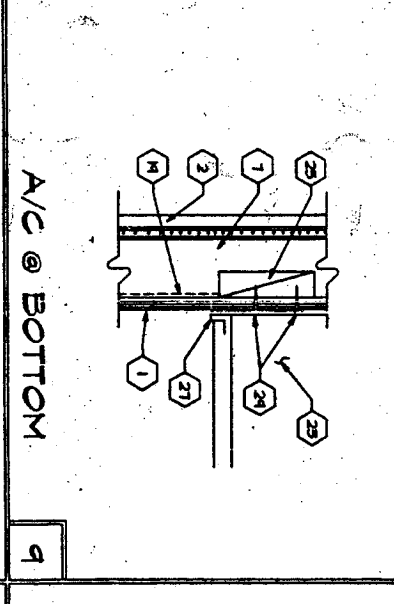
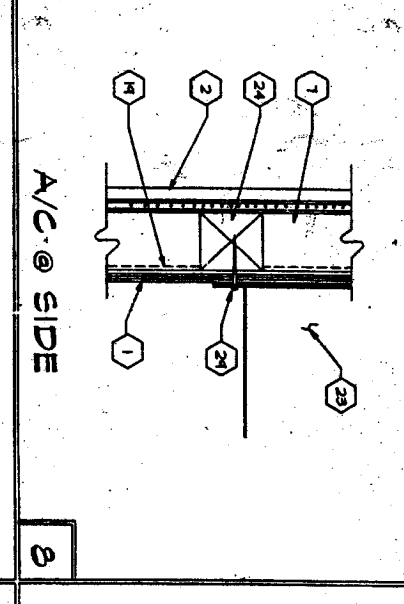
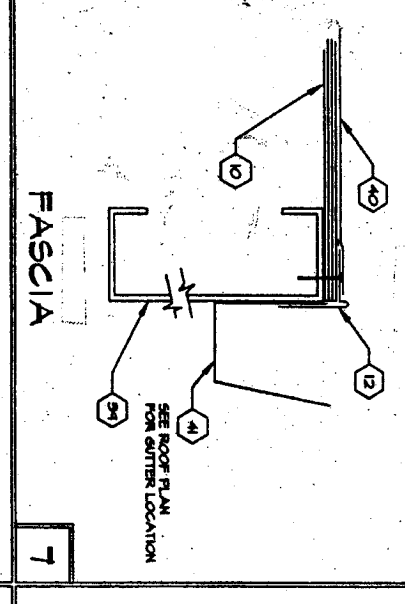
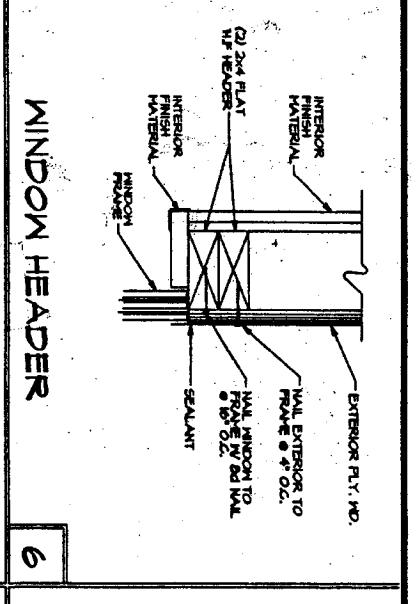
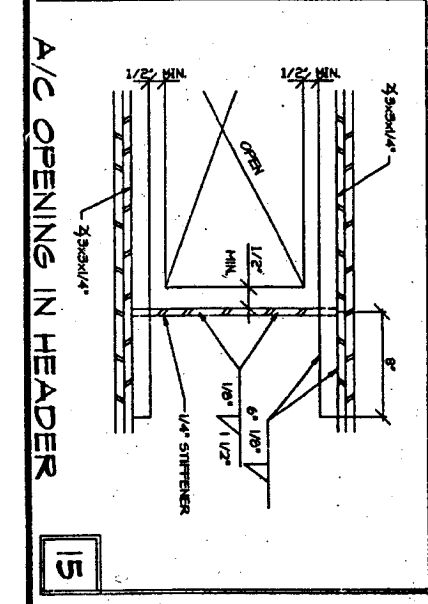
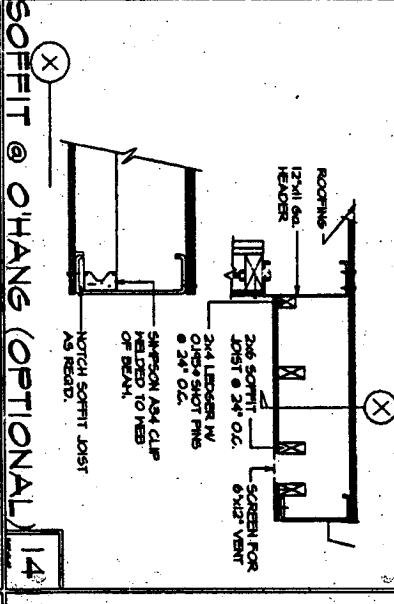
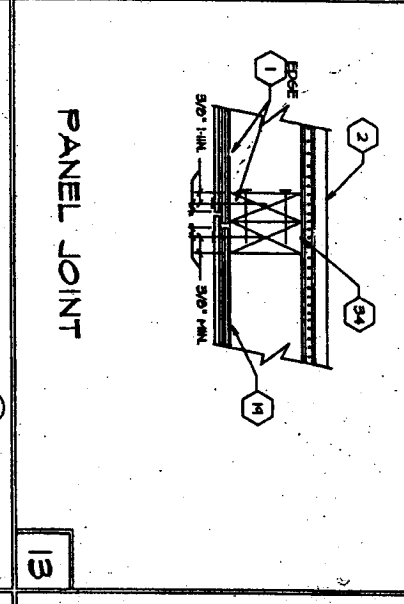
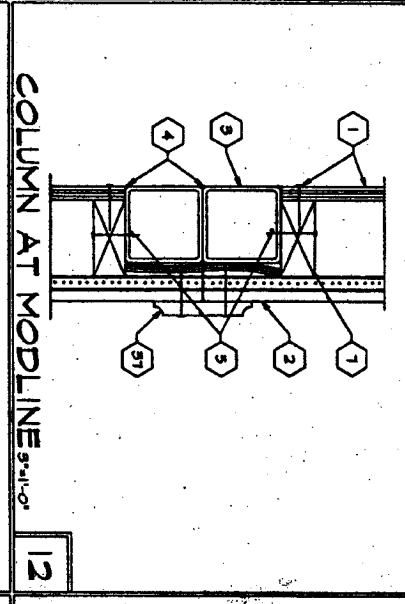
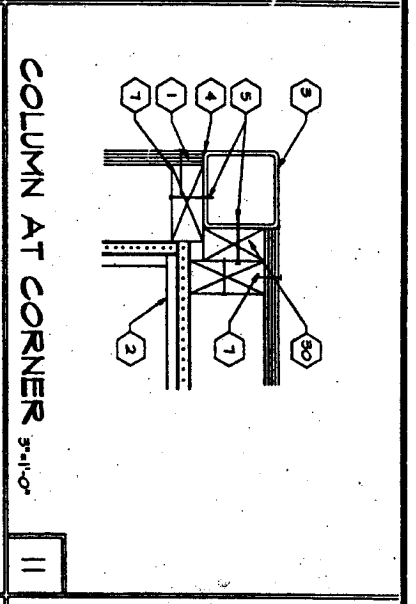
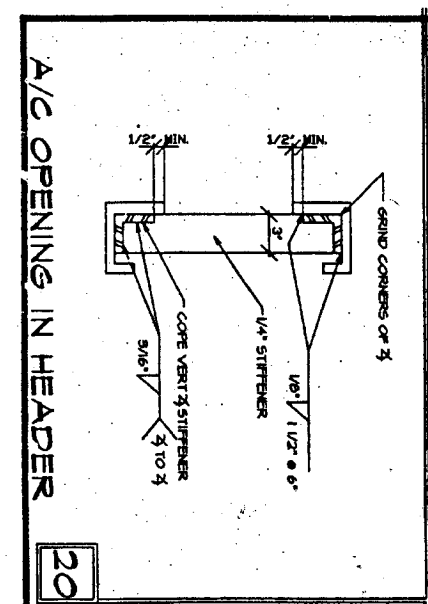
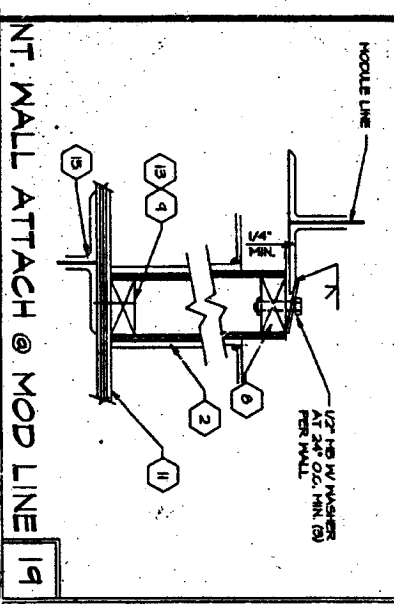
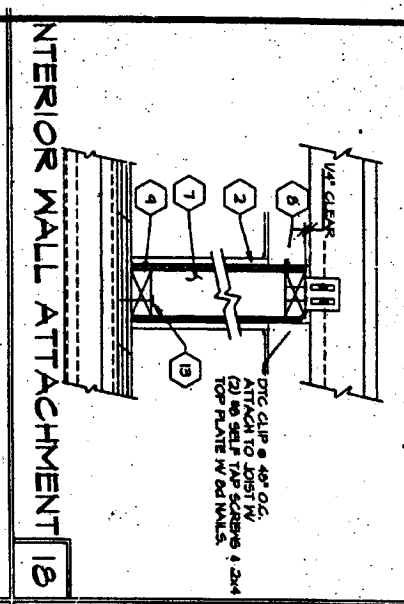
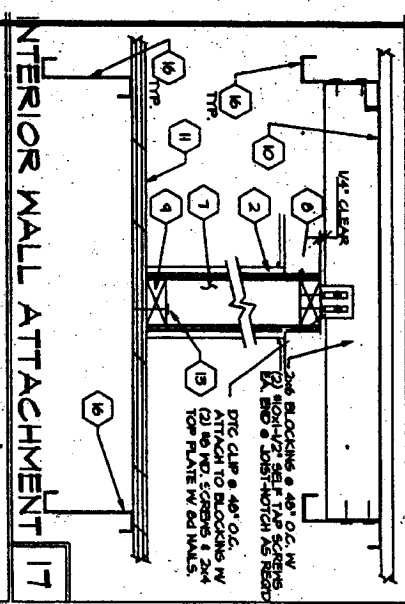
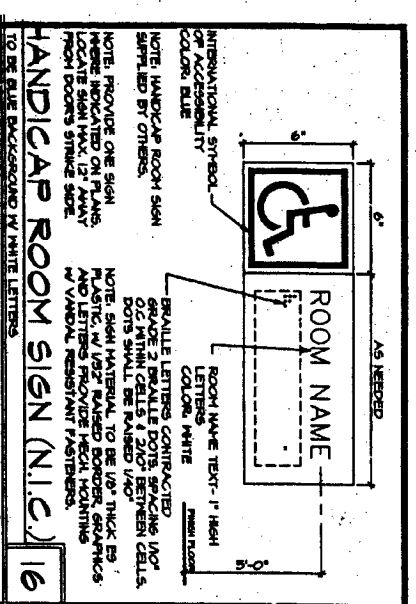
CHECKED BY

10833 Krameria Ave., Riverside, CA 92504  
Phone (909) 798-7196  
Fax (909) 798-0283  
**TURORA MODULAR INDUSTRIES**

BUILDING SECTIONS,  
WALL FRAMING  
MONO SLOPE  
WOOD STUDS  
(24x40)

SHEET  
3

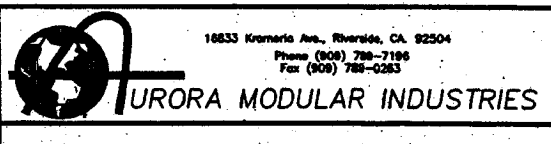




KEYNOTES

- EXTERIOR PLYWOOD SHIPMENT-WEATHERING - MAX. 1/4" CORROSION RESISTANT 3/4" BOX WALLS @ 4" O.C. BOARDS/STRIPS @ 12" O.C. FIELD, WITH HOIST/RISE BARBERS SEE SHEET 42 FOR MATERIAL.
- TYPICAL INTERIOR FINISH - SEE SHEET 41 FOR MATERIAL.
- STEEL TUBE COLUMN - SEE SHEET 54.0 OR 54.1
- SEALANT
- NAIL DENT-1/8" OR RANGETER 1/4" SD @ 24" O.C.
- 2X4 TRIMMER
- 2X4 FULL HEIGHT STUDS
- 2X4 TOP PLATE
- 2X4 BOTTOM PLATE
- ROOF SHEATHING - SEE SHEET 54.0 OR 54.1
- FLOOR SHEATHING - SEE SHEET 54.0 OR 54.1
- 4x4 UNGRADED METAL FLASHING
- 1/4" BOX WALLS @ 16" O.C.
- NOT USED
- STEEL FLOOR CHANNEL - SEE SHEET 54.0 OR 54.1
- STEEL JOIST - SEE SHEET 54.0 OR 54.1
- HOLLOW METAL DOOR FRAME
- HETAL DOOR
- HOIST/RISE BARBERS
- HEADER - (2) 2X4 H.F. STUD AND PLAT
- DOOR BOTTOM WITH WEATHER STRIP
- 2X2 ALUMINUM THRESHOLD
- WALL MOUNTED A/C
- 4x4 H.F. & BETTER POST
- 2x6 BLOCK BETWEEN STUDS. ATTACH TO STUDS W/ (2) 1/4" BOX WALLS EACH END OF BLOCKS INTO STUD.
- NOT USED.
- 11 6x4 x 2-1/2" LONG STEEL BOTTOM BRACKET
- NOT USED.
- 3/8" DIA. x 3-1/2" LONG BOLTS. GNTLY AS INDICATED BY THE DRILLED HOLES ON INT.
- 3/4" x 5/8" SPACERS
- NOT USED
- NOT USED
- 1x4 TRIM
- NOT USED
- NOT USED
- NOT USED
- 1/2" MAX. THRESHOLD
- TOP OF LANDINGS
- 1/2" MAX. THRESHOLD
- 12 SLOPE 11"
- NOT USED
- 1/2" DIA. x 2-1/2" LONG BOLTS. GNTLY AS INDICATED BY THE DRILLED HOLES ON INT.
- 3/8" DIA. x 2-1/2" LONG STEEL BOTTOM BRACKET
- NOT USED.
- 3/4" x 5/8" SPACERS
- NOT USED
- NOT USED
- 1x4 TRIM
- NOT USED
- NOT USED
- NOT USED
- 1/2" DIA. x 2-1/2" LONG BOLTS. GNTLY AS INDICATED BY THE DRILLED HOLES ON INT.
- 3/8" DIA. x 2-1/2" LONG STEEL BOTTOM BRACKET
- NOT USED.
- 3/4" x 5/8" SPACERS
- NOT USED
- NOT USED
- 1x4 TRIM
- NOT USED
- NOT USED
- NOT USED
- 1/2" DIA. x 2-1/2" LONG BOLTS. GNTLY AS INDICATED BY THE DRILLED HOLES ON INT.
- 3/8" DIA. x 2-1/2" LONG STEEL BOTTOM BRACKET
- NOT USED.
- 3/4" x 5/8" SPACERS
- NOT USED
- NOT USED
- 1x4 TRIM
- NOT USED
- NOT USED
- NOT USED
- 1/2" DIA. x 2-1/2" LONG BOLTS. GNTLY AS INDICATED BY THE DRILLED HOLES ON INT.
- 3/8" DIA. x 2-1/2" LONG STEEL BOTTOM BRACKET
- NOT USED.
- 3/4" x 5/8" SPACERS
- NOT USED
- NOT USED
- 1x4 TRIM
- NOT USED
- NOT USED
- NOT USED

NOTE: BUILDING AND LOAD REVISIONS SHOWN IN CIRCLES AND NUMBERED.



TYPICAL DETAILS  
PLY'WD EXTERIOR  
(WOOD STUDS)

53.0 SHEET

D.S.A. PORTION 1

04-1010951

06-1-2001

DR. ENGINEER

CHANGE ORDER

CHECKED BY

ARCHITECT





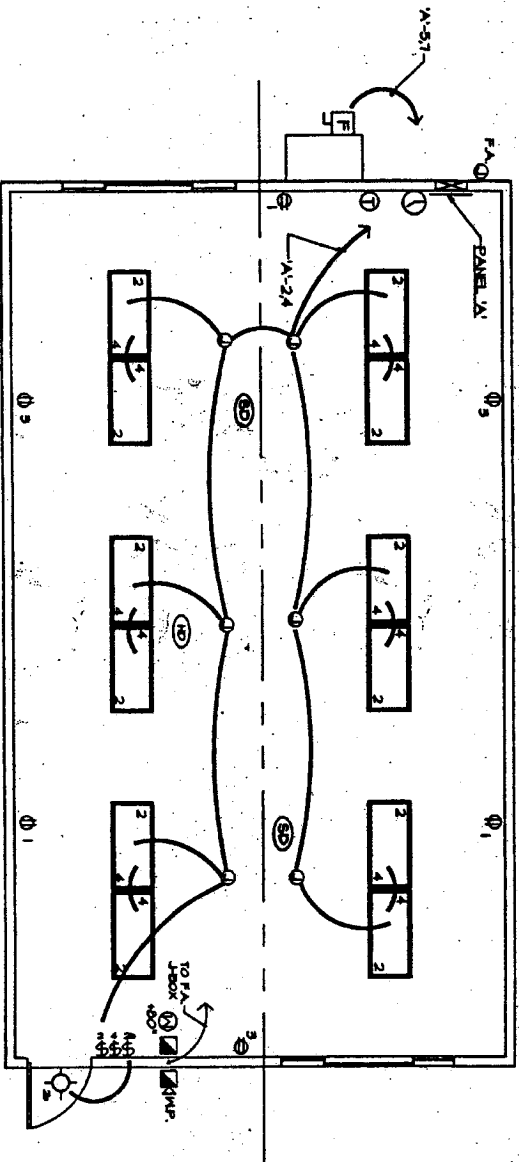




PANEL A		120/240 VOLT		1 PHASE		3 WIRE	
100 g	BUS	100 g	MAIN				
OUTLETS	AMPS	WATTAGE	BREAKER	REMARKS			
1	3	540	20				
2	12	1080	20				
3	3	540	20				
4	12	460	20				
5	—	5880	60	83 TON HVAC			
6	—	—	—				
7	—	5880	—				
8	—	—	—				
9	1	180	20	CLOCK OUTLET			
10	—	—	—				
11	—	—	—				
12	—	—	—				
13	—	—	—				
14	—	—	—				
15	—	—	—				
16	—	—	—				
17	—	—	—				
18	—	—	—				
19	—	—	—				
20	—	—	—				
TOTALS		1660	1980	= 15.04kw 62.1 amps max			

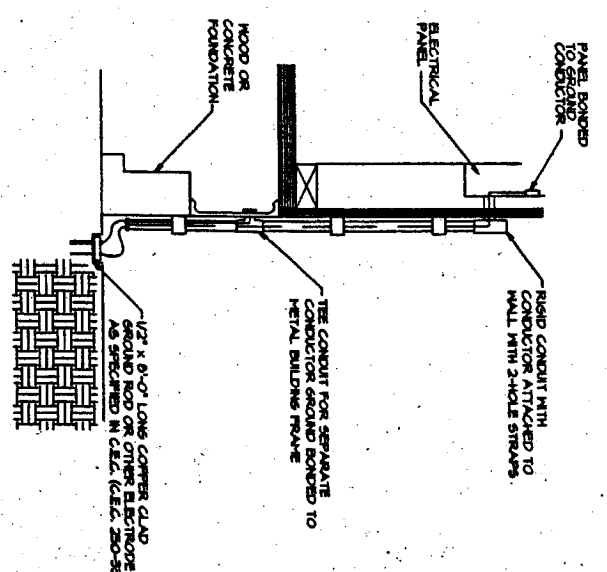
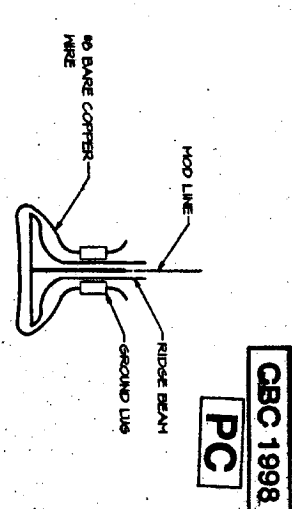
FLA X 125 = 78.0 amps

SYMBOL	DESCRIPTION	WATTS	MANUFACTURER
	2 x 4 FLUORESCENT LAMP IN FUTURE ACETIC FROTHING LINE, BATTERY SAVING BALLAST. (40 WATT TUBE, W/ 21 BA)	80 WATTS	GENERAL ELECTRIC OR BSWL
	120V 15A 1-POLE RECEPTACLE WITH GROUNDING	180 WATTS	GENERAL ELECTRIC OR BSWL
	120V 15A 1-POLE LIGHT SWITCH - SINGLE POLE	180 WATTS	GENERAL ELECTRIC OR BSWL
	JUNCTION BOX		GENERAL ELECTRIC OR BSWL
	DISCONNECT SWITCH - BUILT INTO AC UNIT		WHITE ROVERS
	THERMOSTAT		WHITE ROVERS
	FIRE ALARM PULL STATION (L-BOX ONLY)		WHITE ROVERS
	FIRE ALARM HORN (L-BOX ONLY) (W/ - INDICATES HEATER/ROOM)		WHITE ROVERS
	ELEC. PANEL		SWD OR BSWL
	ELEC. CLOCK & BELOW CEILING LINE		HEATLOCK FOR OR BSWL
	EXIT SIGN W/ BATTERY BACK-UP - EMERGENCY LIGHTING MOUNTED ABOVE DOOR		HEATLOCK FOR OR BSWL
	VISUAL WARNING DEVICE - 60 FLASHES PER MINUTE (L-BOX ONLY)		HEATLOCK FOR OR BSWL
	CEILING MOUNTED SMOKE DETECTOR & 12" Ø FROM SIDEWALL & 10" Ø FROM ENDWALL. (L-BOX ONLY)		HEATLOCK FOR OR BSWL
	ATTIC HEAT DETECTOR (L-BOX ONLY)		HEATLOCK FOR OR BSWL



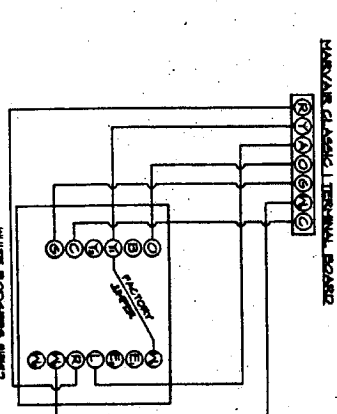
**LIGHTING AND POWER PLAN**

SCALE: 1/4" = 1'-0"  
A. UNIT SHOWN  
B. UNIT OFF HAND.



**SYSTEM GROUND DETAIL**

- NOT BY PORTABLE MANUFACTURER
1. SIZE OF CONDUCTORS SHALL COMPLY WITH CEC TABLE 250-8.
  2. BOND SEPARATE CONDUCTORS FROM GROUND ROD TO ELECTRICAL PANEL AND TO METAL BUILDING FRAME (CEC 250-40). IN ADDITION TO THE DETAIL SHOWN ABOVE, BOND THE ELECTRICAL GROUND TO METAL WATER PIPING (CEC 161-11), INTO THE SOIL IF AVAILABLE. (CEC 250-41)
  3. ALL HOODS OF THE METAL FRAME BUILDERS SHALL BE ELECTRICALLY BONDED TOGETHER. (ISOLATED ONLY IS NOT ACCEPTABLE BONDING)
  4. CHECK RESISTANCE TO GROUND. IF RESISTANCE EXCEEDS 25 OHMS, INSTALL ADDITIONAL GROUND RODS (CEC 250-40) AS REQUIRED. WITH CONDUCTORS, AS SHOWN, SEPARATED BY AT LEAST 8'-0" UNTIL RESISTANCE IS 25 OHMS OR LESS.
  5. FIELD INSPECTOR SHALL VERIFY THE GROUNDING TEST.



**CBC 1998**  
**PC**

**D.S.A.**  
REGISTERED PROFESSIONAL ENGINEER  
OFFICE OF ELECTRICAL ENGINEERING  
04-1010551  
JAN 26 2004  
M. J. ...

**D.S.A.**  
PORTION 1  
STRUCT. ENGINEER  
M. J. ...

**ARCHITECT**  
11808E EXPRESS WAY, NCCO

**CHANGE ORDER**  
**CHECKED BY**

**TURORA MODULAR INDUSTRIES**  
18833 Krameria Ave., Riverside, CA 92504  
Phone (909) 798-7196  
Fax (909) 798-0263

**ELECTRICAL, POWER & LIGHTING FLOOR PLAN & PANEL SCHEDULE**

**SHEET**  
10





DOOR SCHEDULE									
DOOR NO.	DOOR SIZES	TYPE	GLASS	FINISH	FRAME	GLASS	FINISH	FRAME	GLASS
1	5'-0" x 6'-0" x 1 3/4"	A	STL		A				
2	3'-0" x 6'-0" x 1 3/4"	A	STL		A				

DOOR HARDWARE GROUP #1		DOOR HARDWARE GROUP #2	
ITEM	DESCRIPTION	ITEM	DESCRIPTION
LOCK SET	LEVER HANDLE, SCHLAGE DPOB RUCES, 2ND FINISH	PANIC	VOL DRYER 280, 2ND FINISH
HINGES	WAGNER RC 174 BB 4 1/2" x 4 1/2" HRP FC	HINGES	WAGNER RC 174 BB 4 1/2" x 4 1/2" HRP FC
CLOSER	NORTON 160, 6 LBS. CLOSING PRESSURE	CLOSER	NORTON 160, 6 LBS. CLOSING PRESSURE
THRESHOLD	TRIKO 271A	THRESHOLD	TRIKO 271A
KICKPLATES	TRIKO 284V	DOOR BOTTOM	TRIKO 284V
WEATHER-STRIP	TRIKO 284V	WEATHER-STRIP	TRIKO 284V
DOOR STOP	QUALITY 1201 B5	DOOR STOP	QUALITY 1201 B5

DOOR HARDWARE GROUP #3		DOOR HARDWARE GROUP #4	
ITEM	DESCRIPTION	ITEM	DESCRIPTION
LOCK SET	LEVER HANDLE, SCHLAGE DPOB RUCES, 2ND FINISH	LOCK SET	LEVER HANDLE, SCHLAGE DPOB RUCES, 2ND FINISH
HINGES	WAGNER RC 174 BB 4 1/2" x 4 1/2"	HINGES	WAGNER RC 174 BB 4 1/2" x 4 1/2"
DOOR STOP	QUALITY 1201 B5	DOOR STOP	QUALITY 1201 B5

DOOR HARDWARE GROUP #5		DOOR HARDWARE GROUP #6	
ITEM	DESCRIPTION	ITEM	DESCRIPTION
LOCK SET	LEVER HANDLE, SCHLAGE DPOB RUCES, 2ND FINISH	LOCK SET	LEVER HANDLE, SCHLAGE DPOB RUCES, 2ND FINISH
HINGES	WAGNER RC 174 BB 4 1/2" x 4 1/2"	HINGES	WAGNER RC 174 BB 4 1/2" x 4 1/2"
DOOR STOP	QUALITY 1201 B5	DOOR STOP	QUALITY 1201 B5

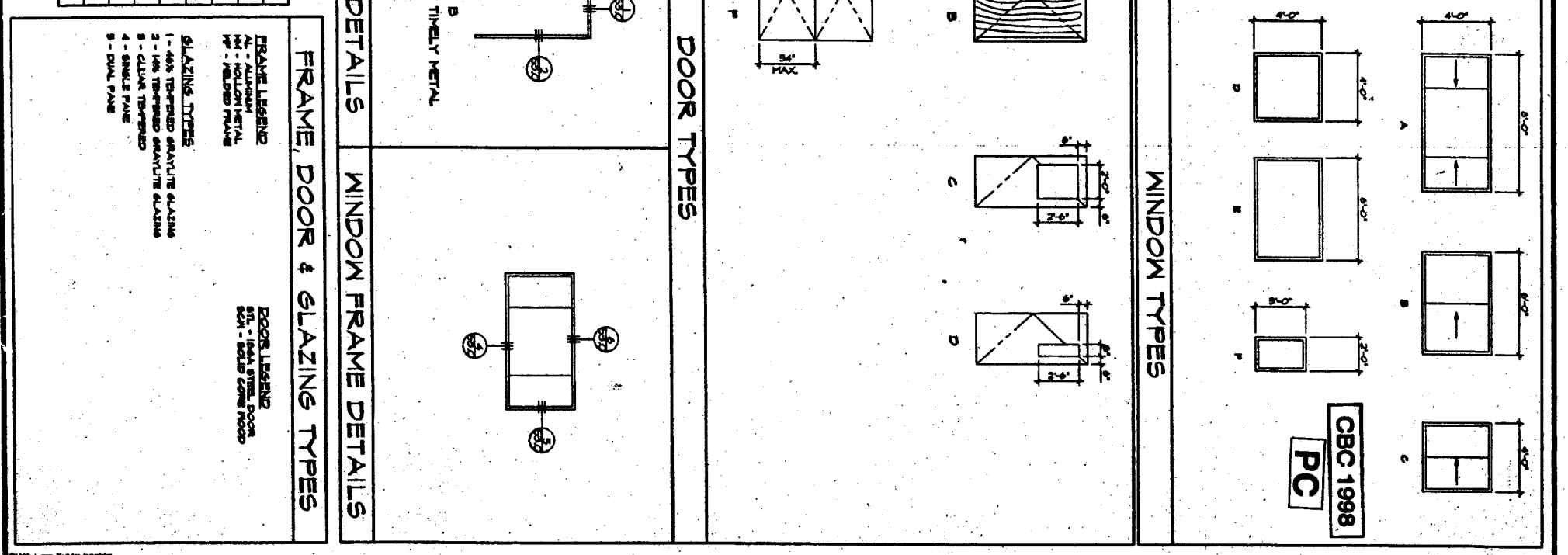
INTERIOR FINISH SPECIFICATIONS	
ITEM	DESCRIPTION
CARPET	CONFORMING WITH THE STATE OF CALIF. SPEC. 7320-2K-C1 GROUP 1 TYPE A CLASS 24, DENSITY 4600, DIRECT GLEU DOWN (SEE NOTE BELOW)
SHEET VINYL	ARTISTONE CLASSIC CORIAN SHEET VINYL, 0.05 GAUGE WITH 6" CORE BASE, COEFFICIENT OF FRICTION 0.5 MIN. (ASPH DDOBT)
VCT	VINYL COMPOSITION TILE WITH 4" TOP SET BASE, COEFFICIENT OF FRICTION 0.5 MIN. (ASPH DDOBT)
SUSPENDED	ARTISTONE 704 CEILING TILE (FLAME SPREAD CLASS II) WITH ARTISTONE HEAVY DUTY 6800, MAIN RAINERS 780L, CROSS RAINERS-XL 7520 OR XL 8225
GYP. BOARD	1/2" HP. GYPSUM BOARD TYPED AND PAINTED
VINYL	1/2" VINYL COVERED TACK BOARD (FLAME SPREAD CLASS I) OVER 1/2" GYP BOARD
F. R. P.	1/8" FULL HEIGHT FIBERGLASS REINFORCED PANELS (FRP) OVER 1/2" WATERPROOF GYP BOARD PANELS.
CHALKBOARD	1/2" PARTICLE BOARD SUBSTRATE, FULL HEIGHT, 1/4" RAIL, WITH CORK INSERT AND 5/8" HOOKS, EXTENDED ALUMINUM HOLDING WITH FLAG HOLDER
MARKERBOARD	1/2" PARTICLE BOARD SUBSTRATE, FULL HEIGHT, 1/4" RAIL, WITH CORK INSERT AND 5/8" HOOKS, EXTENDED ALUMINUM HOLDING WITH FLAG HOLDER

24 X 40 CLASSROOM		36 X 40 CLASSROOM		48 X 40 CLASSROOM					
ROOM DESC.	FLOOR	CEILING	WALLS	MISC.	ROOM DESC.	FLOOR	CEILING	WALLS	MISC.
CLASSROOM	CARPET	SUSPENDED	VINYL		CLASSROOM	CARPET	SUSPENDED	VINYL	
					CLASSROOM	CARPET	SUSPENDED	VINYL	

INTERIOR FINISH SCHEDULE				
ROOM NO.	FLOOR	CEILING	WALLS	MISC.
CLASSROOM	CARPET	SUSPENDED	VINYL	
RESTROOM	SHEET VINYL	SUSPENDED	FRP	MARKERBOARD



**DOOR SCHEDULE**

**WINDOW SCHEDULE**

**FINISH SCHEDULES**

18833 Kromer Ave., Riverside, CA 92504  
Phone (951) 788-7196  
Fax (951) 788-0263

**TURORA MODULAR INDUSTRIES**

**ARCHITECT**

**ENGINEER**

**STRUCT. ENGINEER**

**D.S.A.**

**PORTION 1**

**FRAME LEGEND**

AL - ALUMINUM

HM - HOLLOW METAL

TM - TIMBERLY METAL

**GLAZING TYPES**

1 - 40% THERMO-SEALANT GLAZING

2 - 100% THERMO-SEALANT GLAZING

3 - CLIMATE THERMO-SEALANT GLAZING

4 - SINGLE PANE

5 - DOUBLE PANE

**DOOR LEGEND**

STL - STEEL

FRP - FIBERGLASS REINFORCED PLASTIC

**CHANGE ORDER**

**CHECKED BY**

**ARCHITECT**

**ENGINEER**

**STRUCT. ENGINEER**

**D.S.A.**

**PORTION 1**



CBC 1998  
PC

D.S.A.  
REGISTRATION NUMBER  
04-1010651  
DATE: JUN 29 1998

D.S.A.  
PORTON 1  
REGISTRATION NUMBER  
04-1010651  
DATE: JUN 29 1998

ARCHITECT  
JAMES B. BROWN, INC.  
1998

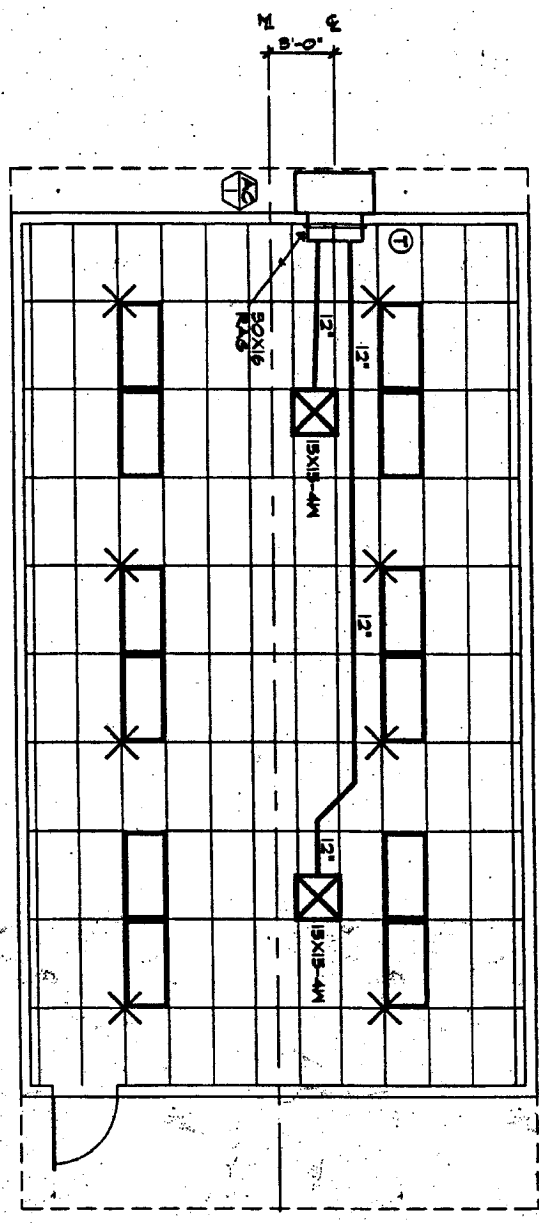
CHANGE ORDER

CHECKED BY

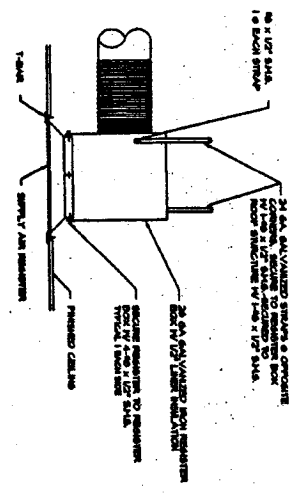
19533 Kromer's Ave., Riverside, CA. 92504  
Phone (909) 788-7190  
Fax (909) 788-0263  
**TURORA MODULAR INDUSTRIES**

AIR CONDITIONING  
PLAN VIEW

DVD  
SHEET  
6-22-10  
DATE





AIR CONDITIONING PLAN VIEW 24'X40' BUILDING  
SCALE 1/4"=1'-0"



REGISTER BOX DETAIL  
N.T.S.

EQUIPMENT & MATERIAL SCHEDULE

- 
 MARVAIR MODEL 5 AYP423PAC08S WALL MOUNTED HEAT PUMP.  
 42500 BTU COOLING, SEER = 10.20  
 42500 BTU HEATING, HEAT = 6.50  
 1400 CFM NOMINAL @ 48\"/>
- 
 SUPPLY AIR FLEX/DALY. IRON SHEETS W/1\"/>
- INTERIOR DUCTWORK FLEX DUCT CLASS 1 UL-181
- REGISTER BOXES: DALY. IRON SHEETS W/ 1/2\"/>
- SUPPLY AIR REGISTERS: KRUEGER 6304-P28 SERIES
- RETURN AIR GRILLES: METALAIR NY SERIES
- THERMOSTAT: WHITE RODGERS 1P42 (6 +46\"/>

ATTACH ALL SUPPLY AND RETURN AIR REGISTERS TO REGISTER BOXES WITH 4-8x1/2\"/>