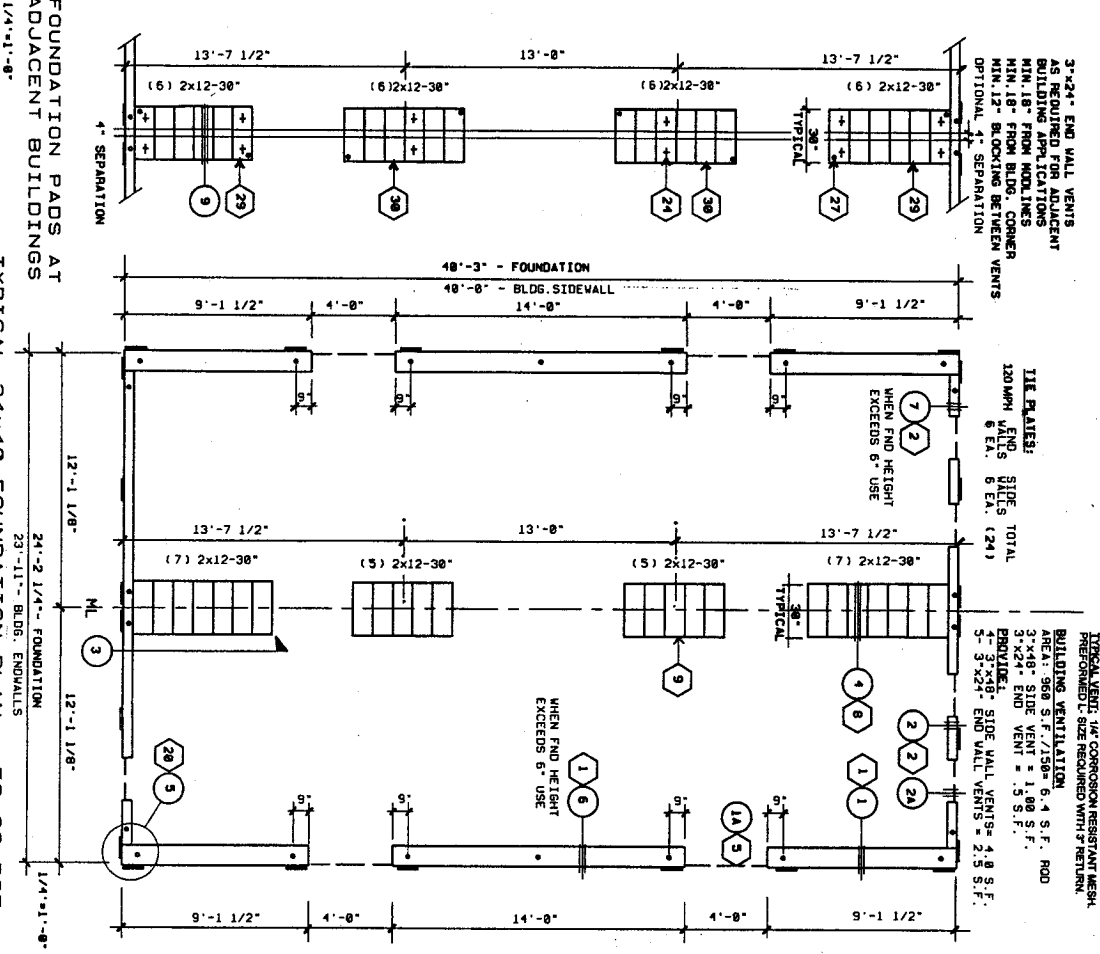
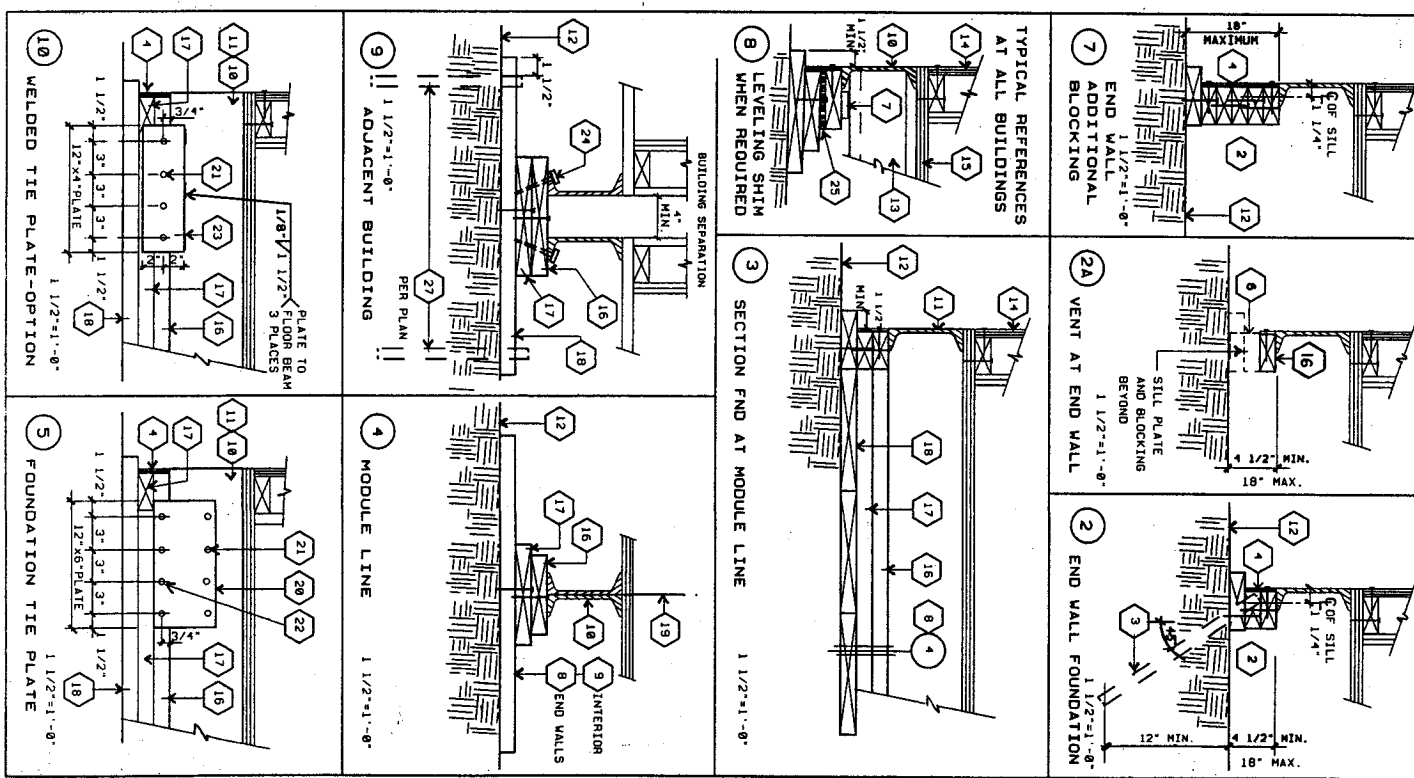


- KEY NOTES 24x40 - 50+20 PSF FLOOR LOAD**
- 1. TOP PLATE: 2x6 CONTINUOUS W/ (1) 1/4" NAIL AT 4" O.C. TO BLOCKING PLATE BELOW. BLOCKING: 2x6 CONTINUOUS W/ (1) 1/4" NAIL AT 4" O.C. TO BLOCKING OR SILL PLATE BELOW. SILL PLATE: 2x12 (P7) WITH SILL RESTRAINT PER GENERAL NOTE 2A.
 - 2. FOUNDATION AT END WALL
 - 3. FOUNDATION AT SIDE WALL
 - 4. SILL RESTRAINT: PIPE TO GRADE (P7) SEE GENERAL NOTE 1A
 - 5. SILL RESTRAINT: 3/8" PIPE W/ 1/2" LONG METALL LUGS SPACING 12" O.C.
 - 6. SILL RESTRAINT: 3/8" PIPE W/ 1/2" LONG METALL LUGS SPACING 12" O.C. AT END WALLS AND 4" O.C. AT SIDE WALLS. FIELD WALLING 12" O.C.
 - 7. SILL RESTRAINT: 3/8" PIPE W/ 1/2" LONG METALL LUGS SPACING 12" O.C. AT END WALLS AND 4" O.C. AT SIDE WALLS. FIELD WALLING 12" O.C.
 - 8. SILL RESTRAINT: 3/8" PIPE W/ 1/2" LONG METALL LUGS SPACING 12" O.C. AT END WALLS AND 4" O.C. AT SIDE WALLS. FIELD WALLING 12" O.C.
 - 9. FOUNDATION AT MOD LINE / END WALL
 - 10. FOUNDATION AT MOD LINE / INTERIOR WALL
 - 11. FOUNDATION AT MOD LINE / INTERIOR WALL
 - 12. FOUNDATION AT MOD LINE / INTERIOR WALL
 - 13. FOUNDATION AT MOD LINE / INTERIOR WALL
 - 14. FOUNDATION AT MOD LINE / INTERIOR WALL
 - 15. FOUNDATION AT MOD LINE / INTERIOR WALL
 - 16. FOUNDATION AT MOD LINE / INTERIOR WALL
 - 17. FOUNDATION AT MOD LINE / INTERIOR WALL
 - 18. FOUNDATION AT MOD LINE / INTERIOR WALL
 - 19. FOUNDATION AT MOD LINE / INTERIOR WALL
 - 20. FOUNDATION AT MOD LINE / INTERIOR WALL
 - 21. FOUNDATION AT MOD LINE / INTERIOR WALL
 - 22. FOUNDATION AT MOD LINE / INTERIOR WALL
 - 23. FOUNDATION AT MOD LINE / INTERIOR WALL
 - 24. FOUNDATION AT MOD LINE / INTERIOR WALL
 - 25. FOUNDATION AT MOD LINE / INTERIOR WALL
 - 26. FOUNDATION AT MOD LINE / INTERIOR WALL
 - 27. FOUNDATION AT MOD LINE / INTERIOR WALL
 - 28. FOUNDATION AT MOD LINE / INTERIOR WALL
 - 29. FOUNDATION AT MOD LINE / INTERIOR WALL
 - 30. FOUNDATION AT MOD LINE / INTERIOR WALL



TYPICAL 24x40 FOUNDATION PLAN
 24'-2 1/4" - FOUNDATION
 23'-11" - BLDG. ENDWALLS
 50+20 - PSF
 1/4" x 1" - 8"

DATEPRINT CORP. 760 SO. CLAREMONT ST., SAN MATEO, CA 94401