

TRUSS ELEVATION
SCALE 3/8" = 1'-0"

KEYNOTES

1. 2x 3x5x5/8" TOP CHORD.
2. 2x 3x5x5/8" 1/2" GAU-BER AT MIDPOINT.
3. 2x 1/2x1 1/2x3/8" VERTICAL MEMBER.
4. 2x 1/2x1 1/2x 3/8" DIAGONAL MEMBER TRP.
5. NOT USED.
6. NOT USED.
7. 1/4" CAP PLATE.
8. 2x 3/8x3/8x 5/16" STRG. TUBE & 1/2" C.
9. 1/2x 3/8x 1/2x 1/4" STEEL TUBE @ 80°C.
10. 1/2x 3/8x 1/2x 1/4" ALTERNATE TUBE STEEL, USE WITH PARALLEL AND NVAL SCREEN OPTION.
11. 3/8"x5/8" 1/2" PLATE WITH 1/4" HOLE FOR 5/8" MACHINE BOLT. LOCATE PLATES @ 8'-0" O.C. FOR HOODLE CONNECTION. SEE DETAIL A.
12. 5/8" MACHINE BOLT FOR HOODLE CONNECTION.
13. NOT USED.
14. TO COLUMN OR GRID CATCHALL SEE LOTS 8, 9, 10.
15. ROOF JOIST- SEE NOTE 5 SHEET 541.
16. 1/2x1 1/2x 5/8" BRACE @ 8'-0" O.C.
17. 2x 3/4x 1/2" END DIAGONAL W/ 1/4" 4" OR 5/8" FILET WELD EACH END @ 80°C.
18. 5/8" PLATE FITTED INSIDE TUBE COL. & WELDED IN PLACE TO COLUMN W/ 5/8" FILET WELD TWO SIDES.
19. 1/2x 1/2x 1/2x 3/8" DIAGONAL W/ 1/4" 4" OR 5/8" FILET WELD EA. END @ 70°C.
20. 1/4" 4x 1/2" PERFORATED FLOOR PLATE.
21. 5/8" MACHINE BOLT @ HOOD. CONNECTION SEE DETAIL B SHEET 540 OR 541.

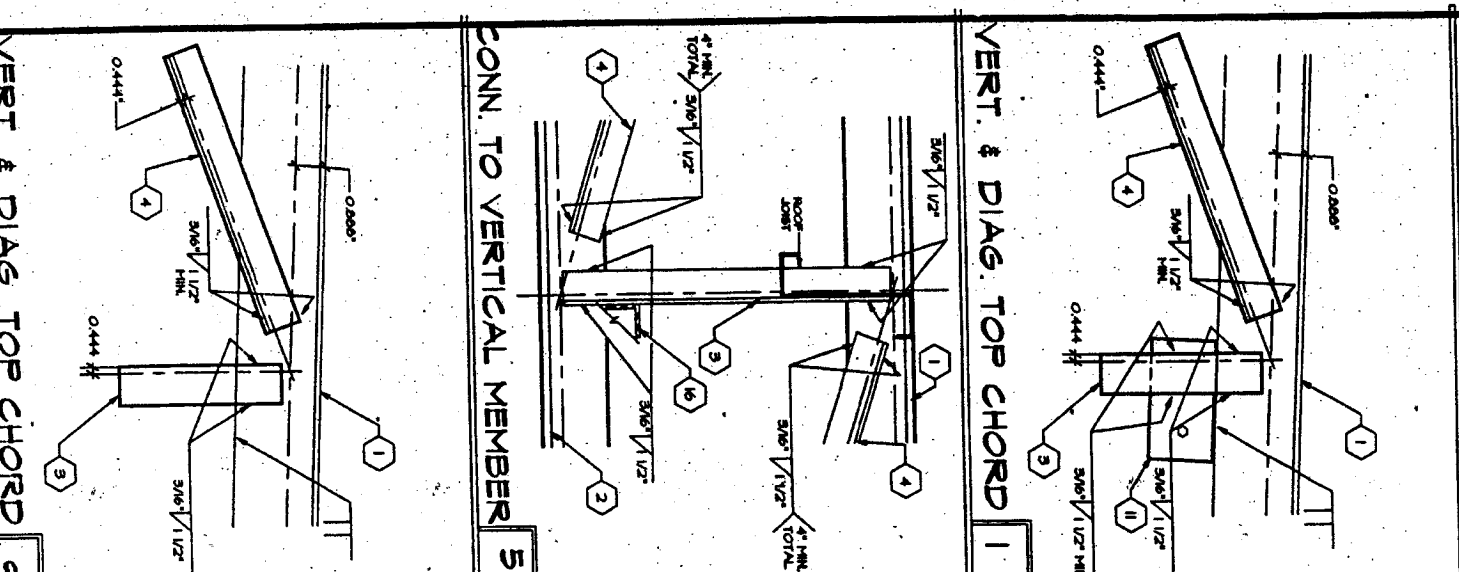
CBC 1998

D.S.A.

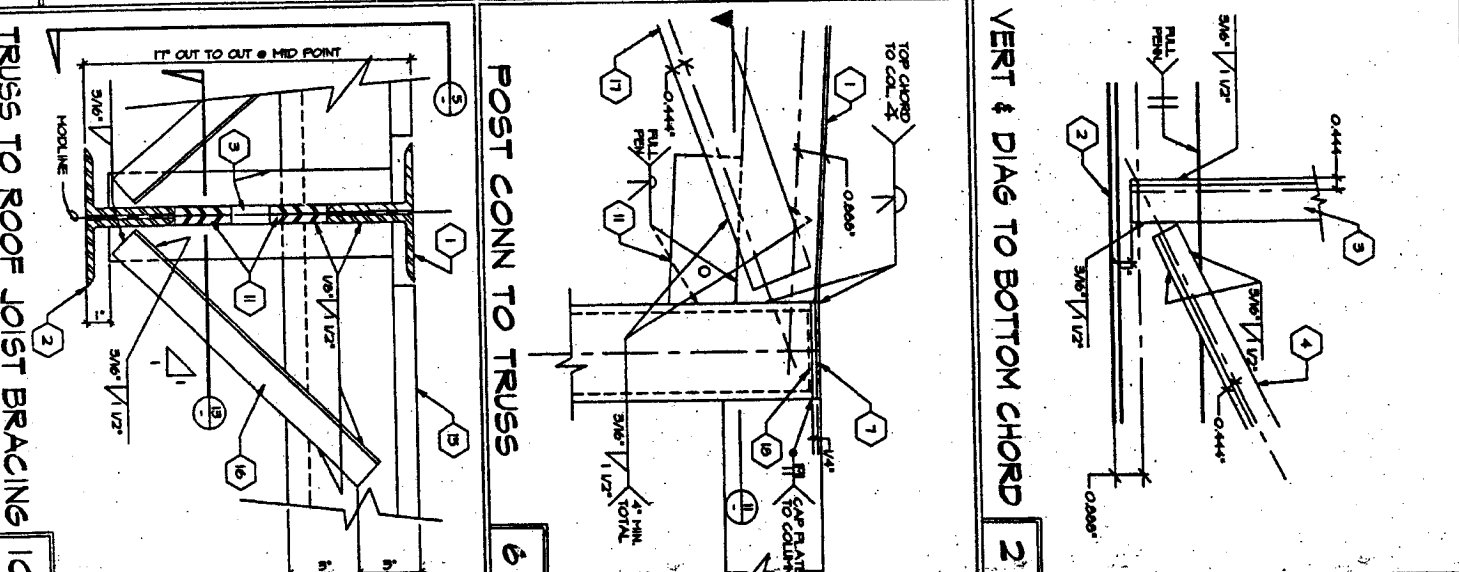
PC

D.S.A.
PORTION 1
04-101055
DATE: MAR 23 2005

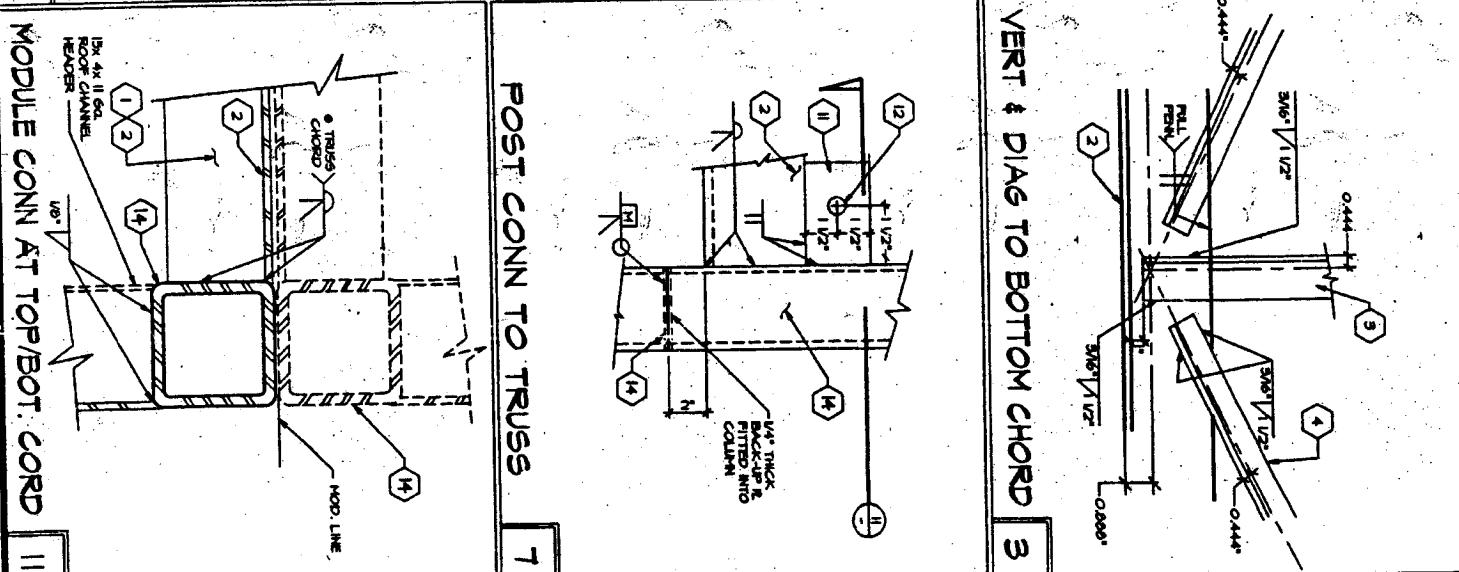
STRUCT. ENGINEER
ARCHITECT
CHECKED BY
CHANGE ORDER



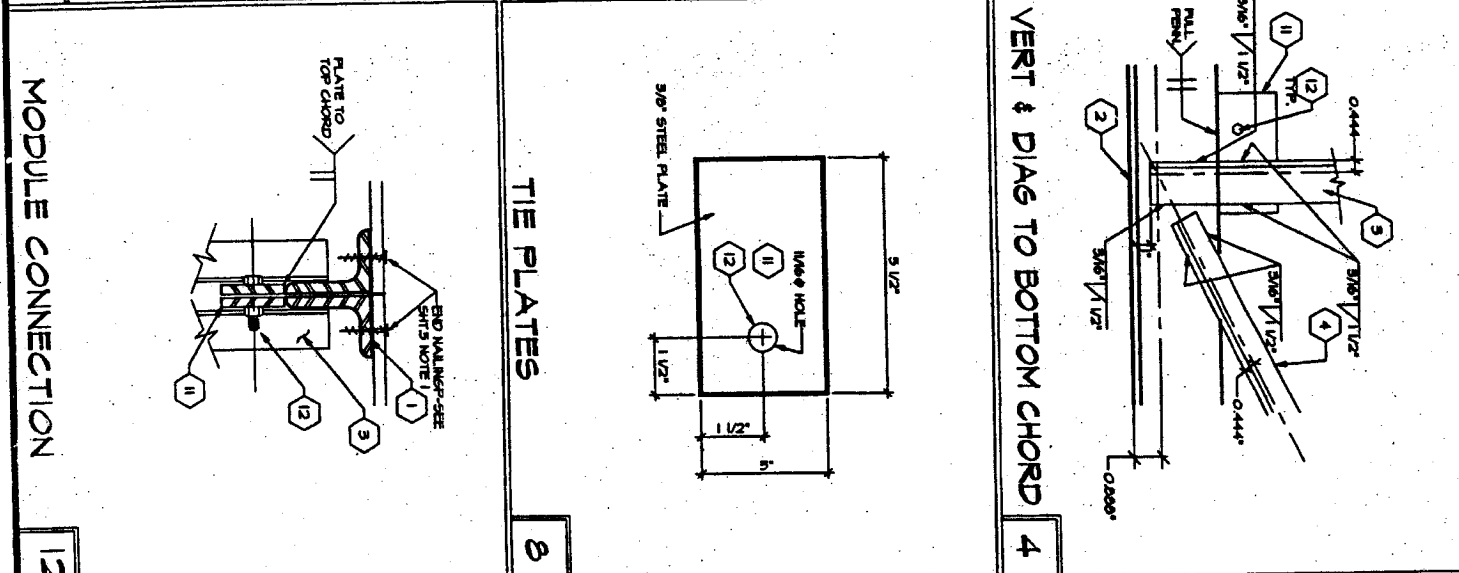
VERT. & DIAG. TOP CHORD 1



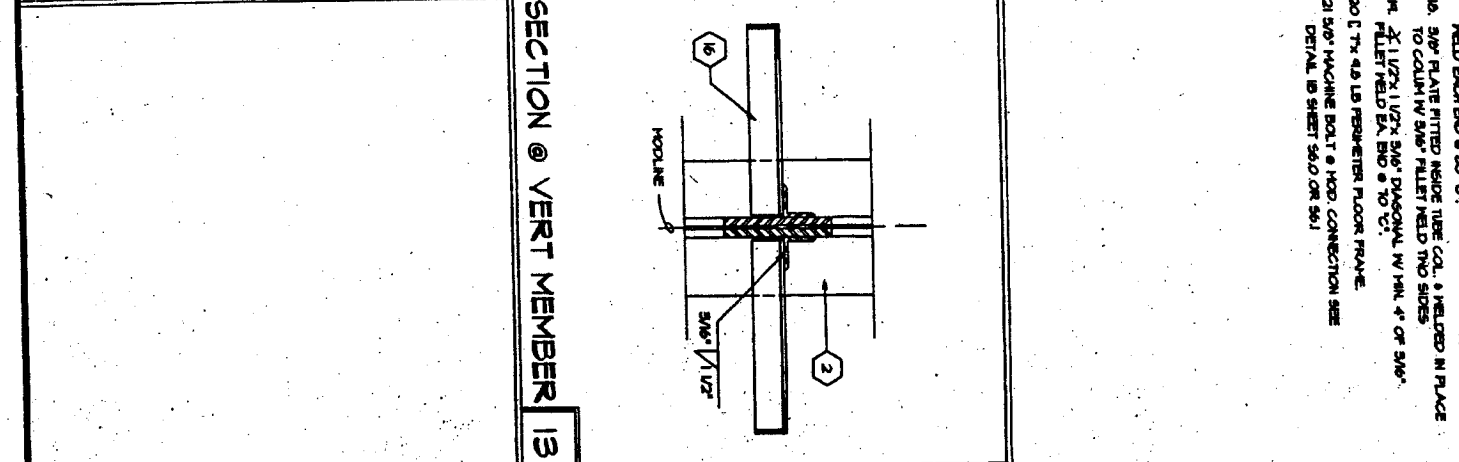
VERT. & DIAG. TO BOTTOM CHORD 2



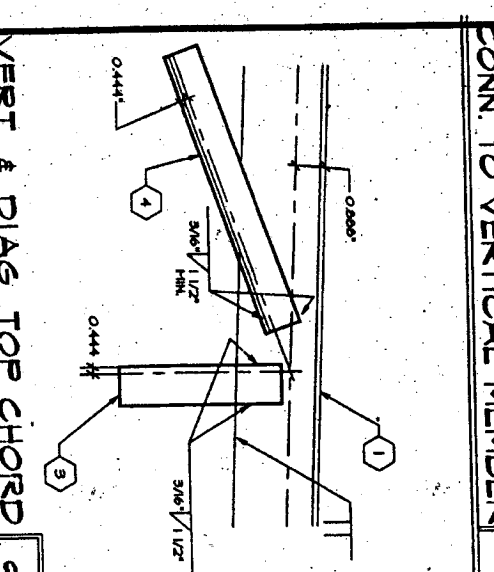
VERT. & DIAG. TO BOTTOM CHORD 3



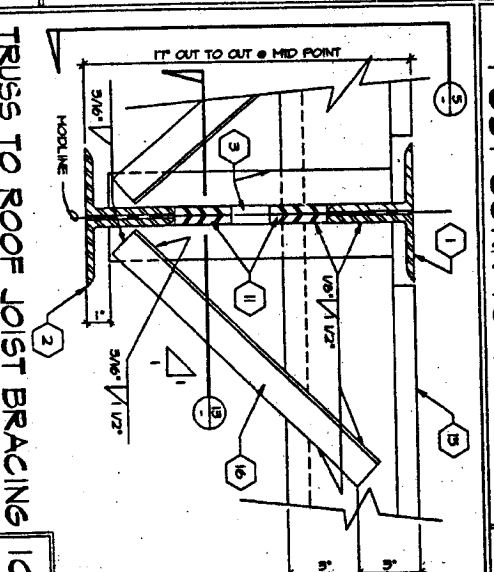
VERT. & DIAG. TO BOTTOM CHORD 4



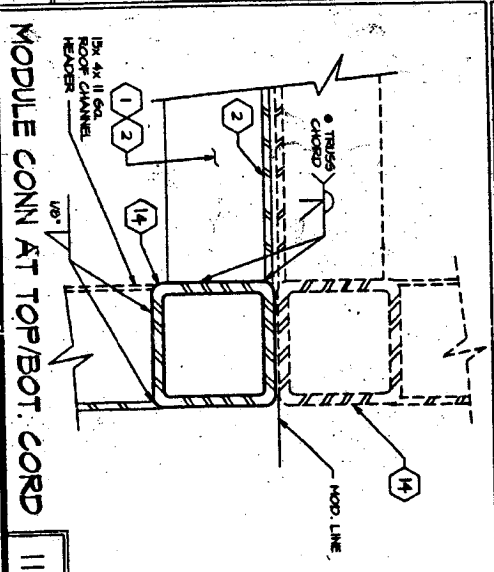
SECTION @ VERT MEMBER 13



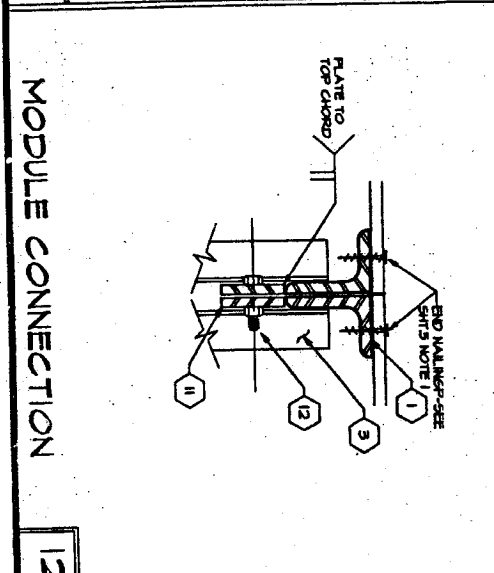
CONN. TO VERTICAL MEMBER 5



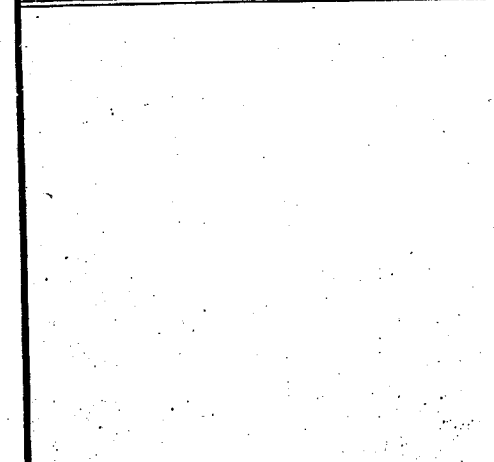
POST CONN. TO TRUSS 6



POST CONN. TO TRUSS 7



TIE PLATES 8



MODULE CONNECTION 12

VERT. & DIAG. TOP CHORD 9

TRUSS TO ROOF JOIST BRACING 10

MODULE CONN AT TOP/BOT. CHORD 11

MODULE CONNECTION 12

16833 Krameria Ave., Riverside, CA 92504
Phone (909) 780-7195
Fax (909) 780-0283
TURORA MODULAR INDUSTRIES

MONO SLOPE
STEEL TRUSS
SECTION AND
DETAILS

SHEET
55