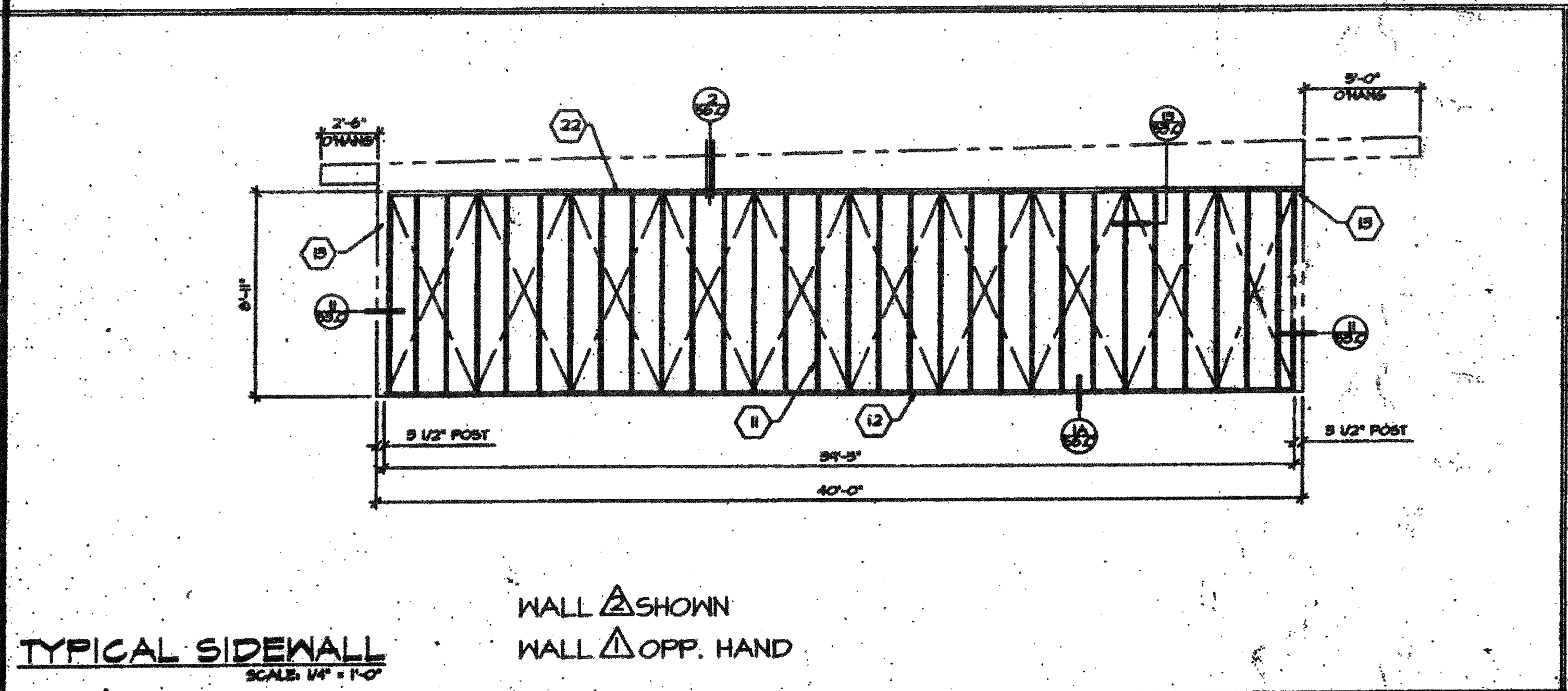
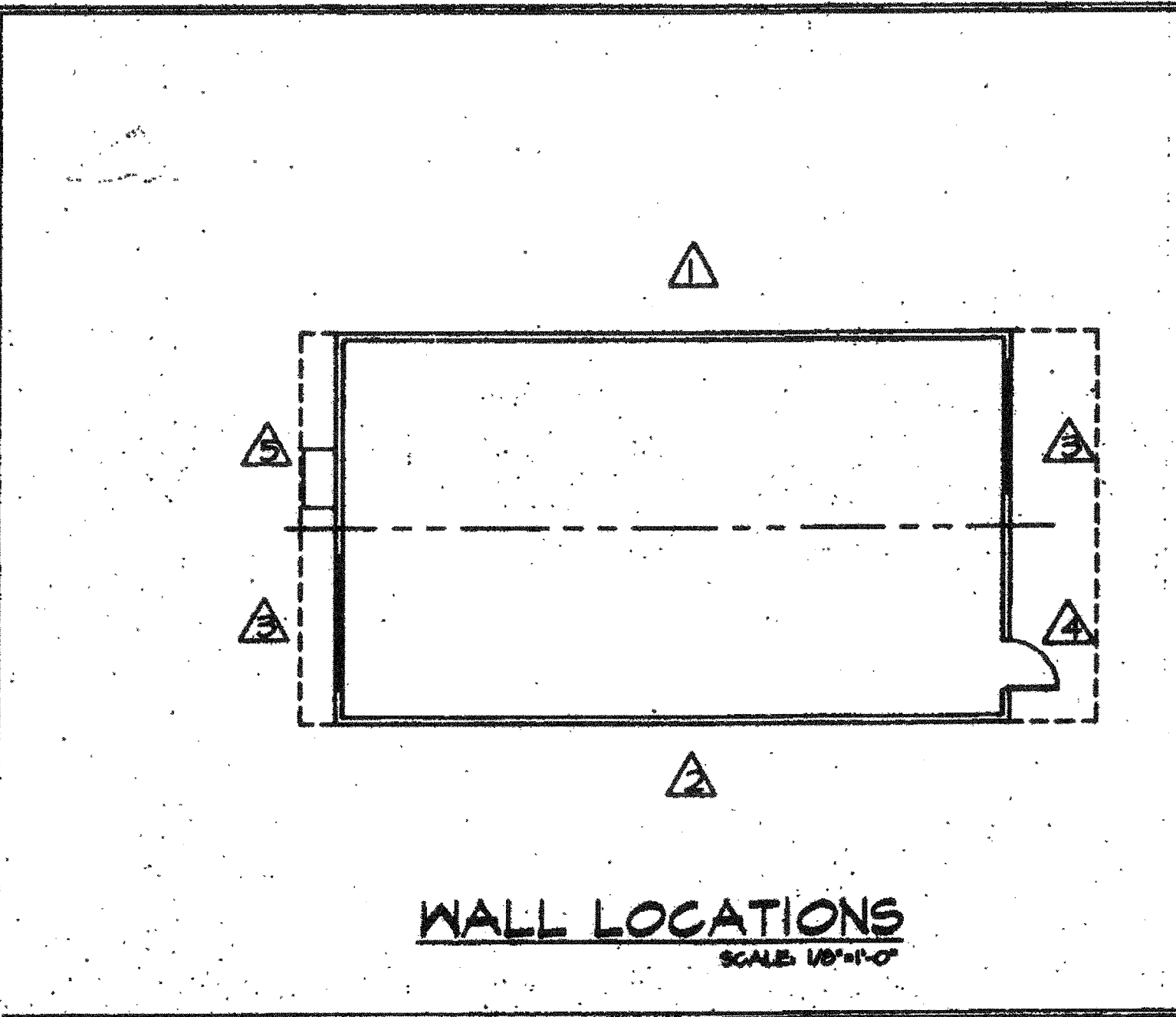


BUILDING SECTIONS
SCALE: 1/4" = 1'-0"



TYPICAL SIDEWALL
SCALE: 1/4" = 1'-0"

WALL \triangle SHOWN
WALL \triangle OPP. HAND



WALL LOCATIONS
SCALE: 1/8" = 1'-0"

KEYNOTES

- 1 ROOF SHEATHING- SEE SHEET 4.I
- 2 STEEL ROOF JOIST- SEE SHEET 84.I
- 3 R-H FIBERGLASS INSULATION ON METAL STRAPS.
- 4 SUSPENDED CEILING- SEE SHEET 4.I
- 5 TYPICAL INTERIOR FINISH- SEE SHEET 4.I
- 6 R-H FIBERGLASS INSULATION
- 7 PLYWOOD FLOOR SHEATHING- SEE SHEET 84.I
- 8 STEEL FLOOR JOIST- SEE SHEET 84.I
- 9 NOT USED
- 10 PLYWOOD SIDING/SHEATHING- SEE SHEET 4.I FOR MATERIAL. NAIL SIDING WITH CORROSION RESISTANT 8d BOX NAILS @ 6" BOUNDARY & EDGES, 12" FIELD.
- 11 STUDS- 2x4 H.F. STUD GRADE @ 16" O.C.
- 12 BOTTOM PLATE- 2x4 H.F. STUD GRD. & BETTER.
- 13 STEEL FRAME- SEE SHEET 84.I 'STRUCTURAL ELEVATIONS' FOR MEMBER TYPES AND SIZES.
- 14 WINDOW HEADER- (2) 2x4 H.F. STUD GRD. PLAT.
- 15 FRAME FOR 8'-0" x 4'-0" WINDOW. USE (2) FULL HEIGHT 1x4 FOR 2x4 STUDS W/ 1 2x4 TRIMMER BOTH SIDES AND (2) 2x4 PLAT FOR WINDOW SILL. USE (4) FULL HEIGHT STUDS AT 80 MPH W/ STRUGG.
- 16 FRAME FOR 5'-0" x 6'-0" DOOR. USE (2) FULL HEIGHT 2x4 JAMB STUDS WITH (2) 2x4 TRIMMER BOTH SIDES & (2) 2x4 PLAT FOR HEADER. SEE DETAIL 1 SHEET 89.0
- 17 NAIL THRU VERTICAL STUD INTO HORIZ. HEAD OR SILL W/ MIN. (4) 8d NAILS PER CONNECTION. TYPICAL AT CORNERS OF ALL OPENINGS.
- 18 4x4 H.F. POST
- 19 SEE SHEET 4.I FOR A/C SIZE AND TORSION OF MECHANICAL PLAT.
- 20 SIMPSON ASS CLIPS (4) PLACES TO TOP AND BOTTOM PLATES.
- 21 SIMPSON ASS CLIPS (4) PLACES TO WINDOW SILL AND HEADER OR (2) PLACES TO DOOR HEADER.
- 22 2x4 PLATE- H.F. STANDARD OR BETTER.
- 23 FIRE BLOCKING PER SEC. 709, 1994 C.B.C.

NOTE:
WHEN BUILDING WIND LOAD IS 80-MPH USE D.P. 42 WOOD MEMBERS.

CBC 1998
PC

D.S.A.
IDENTIFICATION STAMP
DIV. OF THE STATE ARCHITECT
OFFICE OF INSULATION SERVICES
04 - 101055

D.S.A.
PORTION 1
NON-RESIDENTIAL STRUCTURAL ENGINEERING
NO. 108678
MAY 11 2016

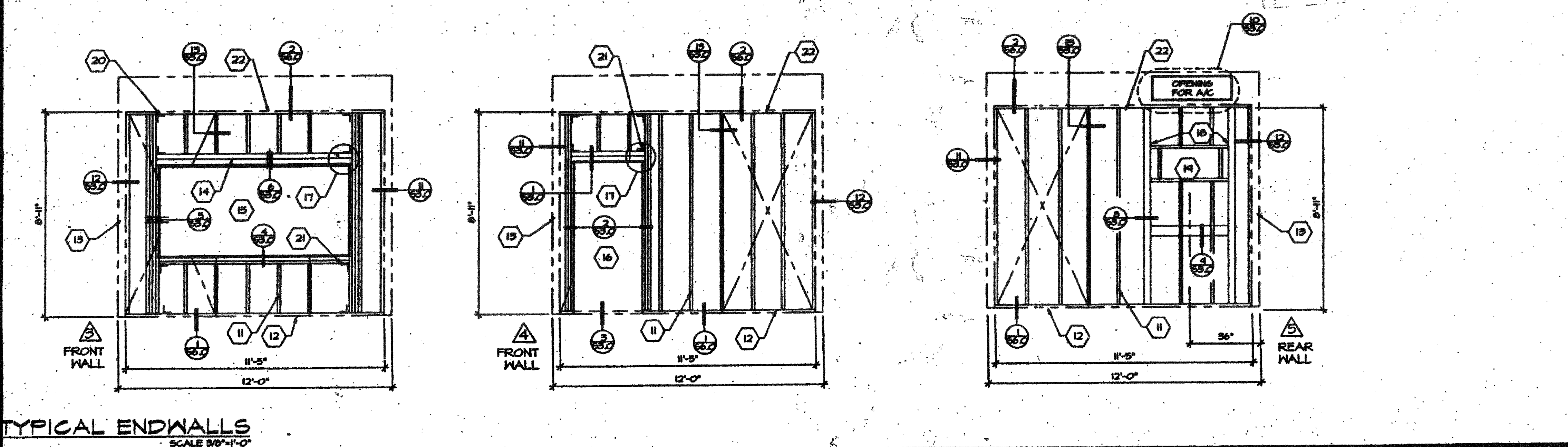
STRUCT. ENGINEER
D.S.A.
LICENSE EXPIRES 12-31-2020

ARCHITECT

CHANGE ORDER

CHECKED BY

18333 Riverchase Ave., Riverchase, TX 75050
Phone: (281) 790-2119
Fax: (281) 790-6268
JURORA MODULAR INDUSTRIES



TYPICAL ENDWALLS
SCALE: 3/8" = 1'-0"

IDENTIFICATION STAMP
DIV. OF THE STATE ARCHITECT
APPB3116978
AC - FLS - SS
Date MAY 03 2016

BUILDING SECTIONS
WALL FRAMING
MONO SLOPE
WOOD STUDS
(24x40)

SHEET
03