

DOOR SCHEDULE									
DOOR NO.	DOOR SIZES	TYPE	GLASS	FINISH	FRAME	GLAZING	DOOR SPECIFICATION		
1	3'-0" x 6'-0" x 1 5/8"	A	STL		A	1	10 GA. FULL FLUSH		
2	3'-0" x 6'-0" x 1 5/8"	A	STL		A	2	10 GA. FULL FLUSH		

DOOR HARDWARE GROUP #1				DOOR HARDWARE GROUP #2			
ITEM	DESCRIPTION	ITEM	DESCRIPTION	ITEM	DESCRIPTION	ITEM	DESCRIPTION
LOCK SET	LEVER HANDLE, SCHLAGE D10PD RHODES, 260 FINISH	PANIC	VON DUPRE 228Q, 260 FINISH	HINGES	WAGAR RC 1274 BB 4 1/2" x 4 1/2" NRP FC	CLOSER	NORTON 160L, 8 LBS. CLOSING PRESSURE
HINGES	WAGAR RC 1274 BB 4 1/2" x 4 1/2" NRP FC	THRESHOLD	YBICO 271A	KICKPLATES	YBICO 284V	WEATHER-STRIP	YBICO 294AV
CLOSER	NORTON 160L, 8 LBS. CLOSING PRESSURE	DOOR BOTTOM	YBICO 284V	DOOR STOP	QUALITY 1201 ES		

DOOR HARDWARE GROUP #3				DOOR HARDWARE GROUP #4			
ITEM	DESCRIPTION	ITEM	DESCRIPTION	ITEM	DESCRIPTION	ITEM	DESCRIPTION
LOCK SET	LEVER HANDLE, SCHLAGE D10S RHODES, 260 FINISH	LOCK SET	LEVER HANDLE, SCHLAGE D10S RHODES, 260 FINISH	HINGES	WAGAR RC 1744 BB 4" x 4"	HINGES	WAGAR RC 1744 BB 4" x 4"
HINGES	WAGAR RC 1744 BB 4" x 4"	DOOR STOP	QUALITY 1201 ES	DOOR STOP	QUALITY 1201 ES		

DOOR HARDWARE GROUP #5				DOOR HARDWARE GROUP #6			
ITEM	DESCRIPTION	ITEM	DESCRIPTION	ITEM	DESCRIPTION	ITEM	DESCRIPTION
LOCK SET	LEVER HANDLE, SCHLAGE D10PD RHODES, 260 FINISH	LOCK SET	LEVER HANDLE, SCHLAGE D10PD RHODES, 260 FINISH	HINGES	WAGAR RC 1744 BB 4" x 4"	HINGES	WAGAR RC 1744 BB 4" x 4"
HINGES	WAGAR RC 1744 BB 4" x 4"	DOOR STOP	QUALITY 1201 ES	DOOR STOP	QUALITY 1201 ES		

WINDOW SCHEDULE			
WINDOW SIZES	FRAME	GLAZING TYPE	SPECIAL NOTES
8'-0" x 4'-0"	AL	1 & 5	ALUMINUM FRAMED SCREENS ON OPERABLE SASH.

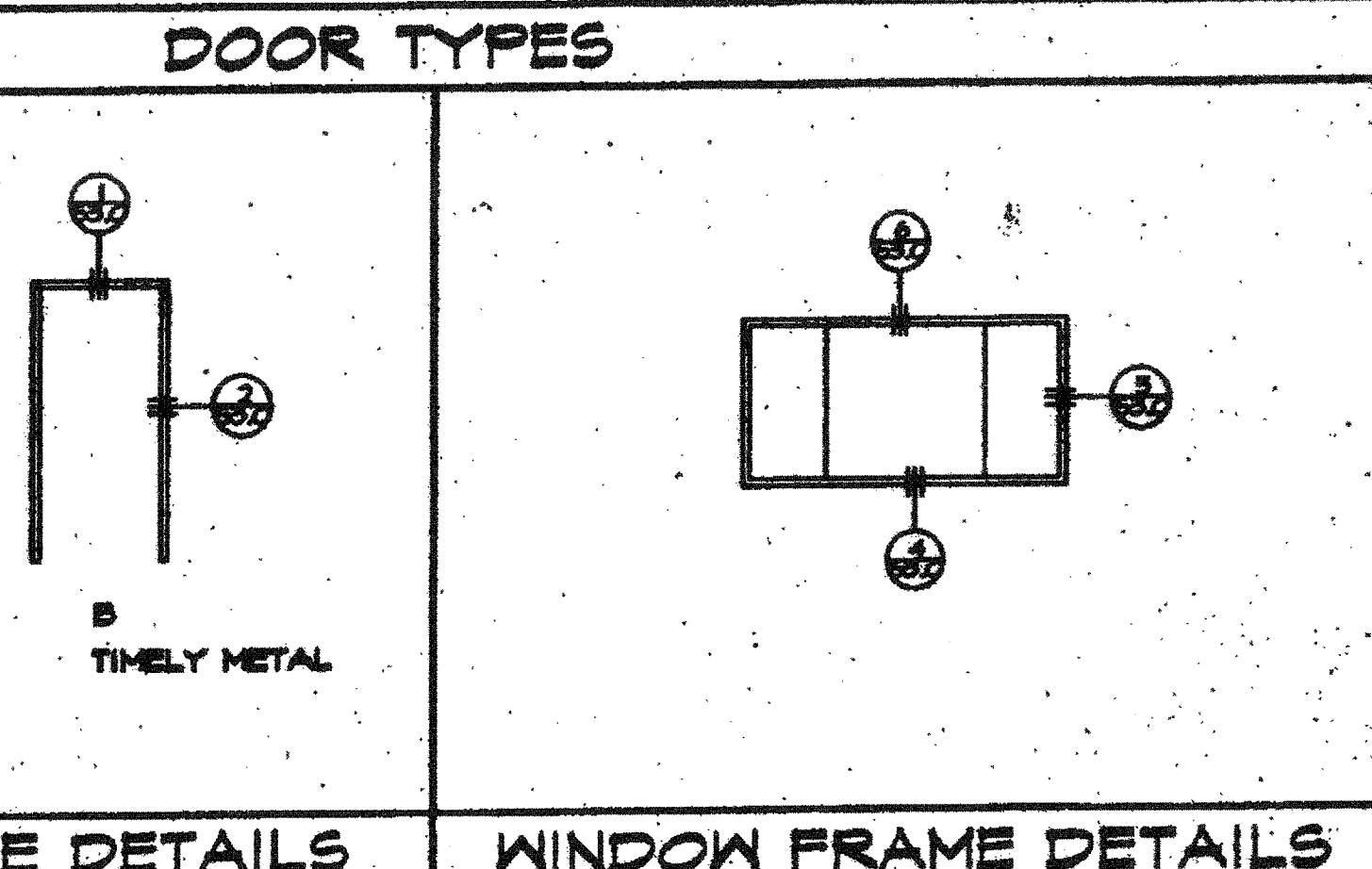
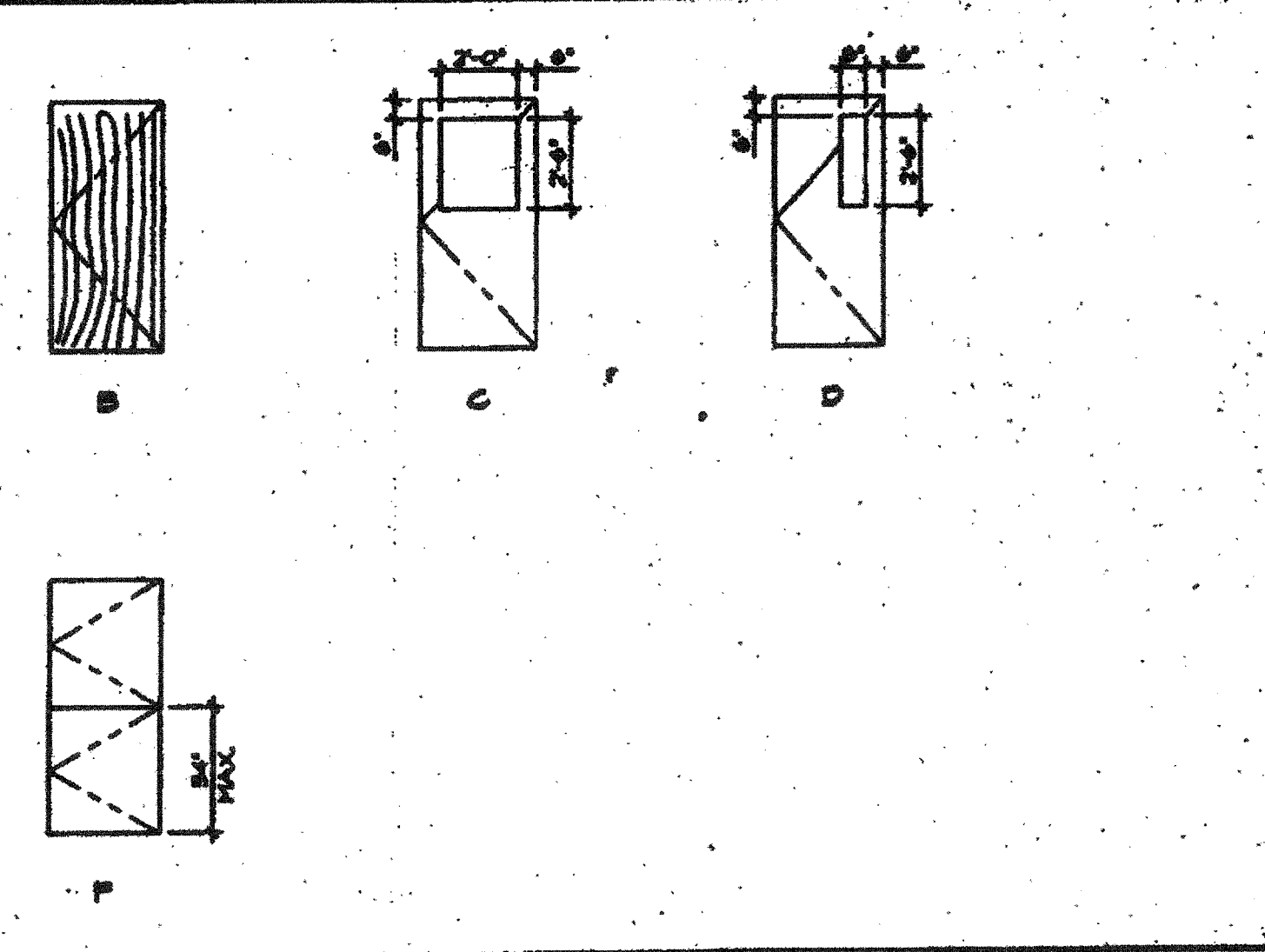
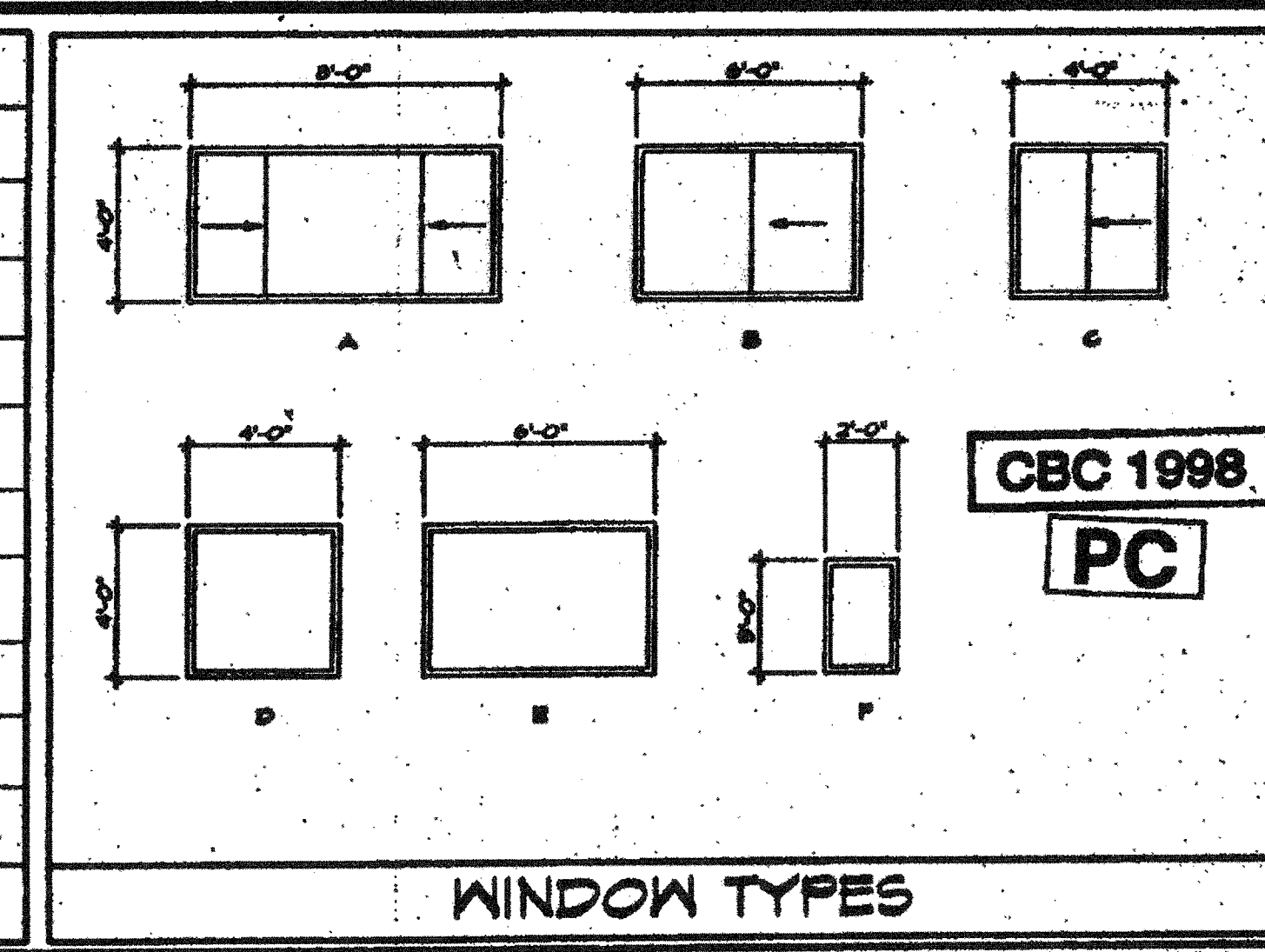
EXTERIOR FINISH			
MATL.	DESC.	MFG.	SPECIFICATION
SIDING	4" x 9" x 5/8"	DURATEMP	APA RATED OR EQUAL, GROUP 1, TYPE 303 EXTERIOR SIDING
ROOFING	BUILT-UP	GAFGLAS	N-5-S-M (SEE SPEC. ON SHEET 9)
	26 GA.	PLACER	
	22 GA.	CAL. STEEL	
TRIM	WOOD 1"x4"	RESAWN	• DOORS

INTERIOR FINISH SPECIFICATIONS	
FLOOR	DESCRIPTION
CARPET	COMPLYING WITH THE STATE OF CALIF. SPEC. T220-2K-C1 GROUP 1 TYPE A, CLASS 24, DENSITY 3600, DIRECT GLUE DOWN. (SEE NOTE BELOW)
SHEET VINYL	ARMSTRONG CLASSIC CORLON SHEET VINYL, .085 GAUGE WITH 6" COVE BASE. COEFFICIENT OF FRICTION 0.5 MIN. (ASTM D2047)
VCT	VINYL COMPOSITION TILE WITH 4" TOP SET BASE. COEFFICIENT OF FRICTION 0.5 MIN. (ASTM D2047)
SUSPENDED	ARMSTRONG 704 CEILING TILE (FLAME SPREAD CLASS I) WITH ARMSTRONG HEAVY DUTY GRID. MAIN RUNNERS 7501, CROSS RUNNERS-XL 7520 OR XL 8223
GYP. BOARD	1/2" HP. GYP. BOARD TAPED AND PAINTED
VINYL	1/2" VINYL COVERED TACK BOARD (FLAME SPREAD CLASS I) OVER 1/2" GYP. BOARD.
F. R. P.	1/2" FULL HEIGHT FIBERGLASS REINFORCED PANELS (FRP) OVER 1/2" WATERPROOF GYP. BOARD PANELS.
CHALKBOARD	1/2" PARTICLE BOARD SUBSTRATE, FULL WIDTH MAP RAIL WITH CORK INSERT AND SIX MAP HOOKS, EXTRUDED ALUMINUM HOLDING WITH FLAG HOLDER.
MARKERBOARD	1/2" PARTICLE BOARD SUBSTRATE, FULL WIDTH MAP RAIL WITH CORK INSERT AND SIX MAP HOOKS, EXTRUDED ALUMINUM HOLDING WITH FLAG HOLDER.

INTERIOR FINISH SCHEDULE				
ROOM DESC. ROOM NO.	FLOOR	CEILING	WALLS	MISC.
CLASSROOM	CARPET	SUSPENDED	VINYL	

INTERIOR FINISH SCHEDULE				
ROOM DESC. ROOM NO.	FLOOR	CEILING	WALLS	MISC.
CLASSROOM	CARPET	SUSPENDED	VINYL	

INTERIOR FINISH SCHEDULE				
ROOM DESC. ROOM NO.	FLOOR	CEILING	WALLS	MISC.
RESTROOM	SHEET VINYL	SUSPENDED HR	FRP	MARKERBOARD (CORLON)



FRAME, DOOR & GLAZING TYPES					
FRAME LEGEND			DOOR LEGEND		
AL - ALUMINUM	STL - 18GA STEEL	FRP - FIBERGLASS REINFORCED PLASTIC	STL - 18GA STEEL	FRP - FIBERGLASS REINFORCED PLASTIC	
GLAZING TYPES			IDENTIFICATION STAMP		
1 - 400 TSP-FINISHED GRAYLITE GLAZING	2 - 1/4" TSP-FINISHED GRAYLITE GLAZING	3 - CLEAR TSP-FINISHED	AP03 116978		
4 - SINGLE PANE	5 - DUAL PANE		Date: May 13 2015		

A/C INFORMATION					
MANUFACT.	MAR/VAR	MANUFACT.	MAR/VAR	MANUFACT.	MAR/VAR
MODEL	AVP42HPA	MODEL	AVP50HPA	MODEL	AVP42HPA
SIZE	8.5 TON (1 UNIT)	SIZE	9 TON (1 UNIT)	SIZE	8.5 TON (2 UNITS)
SUPPLY	DUCTED	SUPPLY	DUCTED	SUPPLY	DUCTED
RETURN	DIRECT	RETURN	DIRECT	RETURN	DIRECT
HEAT STRIP	SEE SHT. E10	HEAT STRIP	SEE SHT. E11	HEAT STRIP	SEE SHT. E12
ELECTRICAL	SEE SHT. E10	ELECTRICAL	SEE SHT. E11	ELECTRICAL	SEE SHT. E12

D.S.A.
 IDENTIFICATION STAMP
 DIV. OF THE STATE ARCHITECT
 OFFICE OF REGULATION SERVICES
 04-101055
 04/13/15
D.S.A.
 PORTION 1
 IDENTIFICATION STAMP
 DIV. OF THE STATE ARCHITECT
 OFFICE OF REGULATION SERVICES
 04-101055
 04/13/15
STRUCT. ENGINEER
 IDENTIFICATION STAMP
 DIV. OF THE STATE ARCHITECT
 OFFICE OF REGULATION SERVICES
 04-101055
 04/13/15
ARCHITECT
 IDENTIFICATION STAMP
 DIV. OF THE STATE ARCHITECT
 OFFICE OF REGULATION SERVICES
 04-101055
 04/13/15
CHANGE ORDER
CHECKED BY
URORA MODULAR INDUSTRIES
 18533 Durango Ave., Durango, CO 81301
 Phone: (970) 249-7789
 Fax: (970) 249-7789
DOOR SCHEDULE
WINDOW SCHEDULE
FINISH SCHEDULES
 SHEET