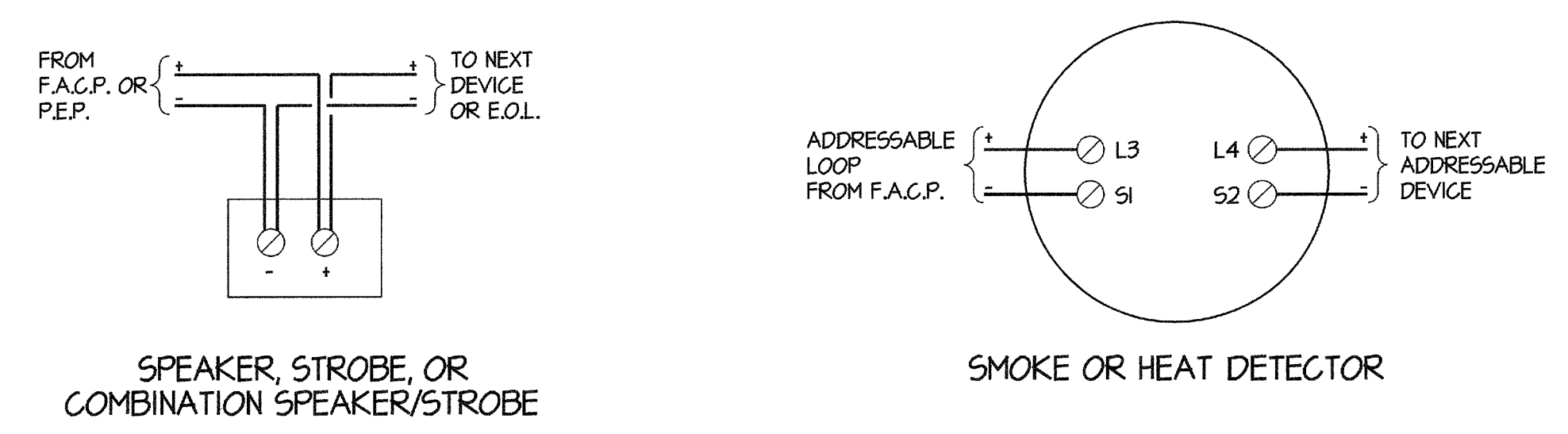
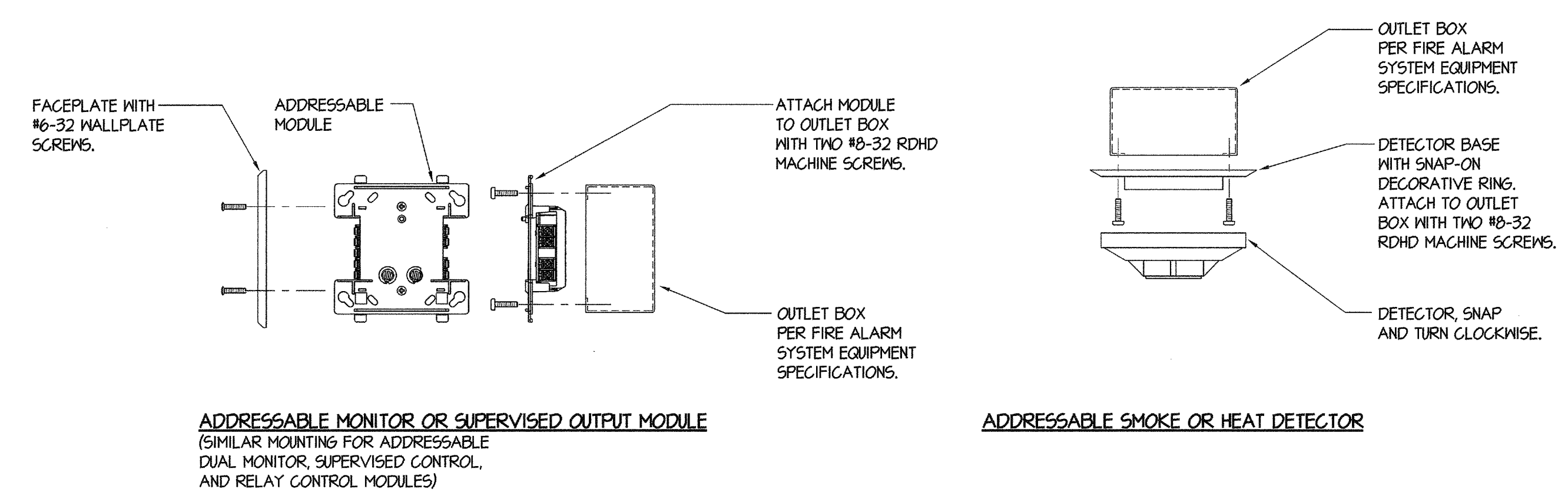


- NOTES (THIS DETAIL ONLY):**
- LENGTHS INDICATED WERE USED FOR CALCULATIONS/DESIGN PURPOSES ONLY AND BASED UPON THE "DIAGRAMMATIC" LAYOUT SHOWN ON THE DRAWINGS. LENGTHS SHALL NOT BE USED FOR BIDDING.
 - PROVIDE A COPY OF THE BATTERY CALCULATION FOR THE FIRE ALARM EQUIPMENT. THE BATTERY CALCULATION SHALL CONTAIN INFORMATION (AS NOTED ON THESE PLANS) AND BE PLASTIC LAMINATED. MOUNT ONTO INSIDE FACE OF PANEL DOOR.
 - REFER TO RESPECTIVE FIRE ALARM PLAN FOR CONDUIT AND CABLING/CONDUCTOR REQUIREMENTS, TYPICAL.
 - CIRCUIT BREAKER SHALL BE EQUIPPED WITH A LOCK-ON ACCESSORY. PROVIDE AN ENGRAVED NAMEPLATE: "FIRE ALARM - LEAVE ON". NAMEPLATE SHALL HAVE WHITE LETTERS ON A RED BACKGROUND. PAINT CIRCUIT BREAKER HANDLE OR LOCK-ON ACCESSORY "RED" IN COLOR.
 - EXISTING SIGNALING CIRCUITS TO REMAIN. NO WORK REQUIRED.
 - EXISTING INITIATION ZONES TO REMAIN. NO WORK REQUIRED.
 - 1 DENOTES END OF LINE RESISTOR ON NOTIFICATION APPLIANCE CIRCUIT. RESISTORS SUPPLIED WITH CONTROL/EXPANDER PANELS AS REQUIRED. LOCATE RESISTORS AT END OF LINE APPLIANCES (CLASS "B" WIRING), TYPICAL.
 - 2 PROVIDE TWO MONITOR MODULES INSIDE THE EXISTING "F.A.C.P." TO INTERTIE IT TO THE NEW "F.A.C.P."
 - 3 PER FIRE ALARM SYSTEM EQUIPMENT SPECIFICATION. SEE SHEET #E31.
 - 4 PROVIDE BATTERIES PER RESPECTIVE BATTERY CALCULATION.
 - 5 ONE 1 1/4" (SPARE) WITH NYLON PULL STRING.
 - 6 SPARE CONDUITS PER FIRE ALARM PLAN. SEE SHEET #E2.
 - 7 SEE DETAIL #3/E3.2 FOR ADDITIONAL INFORMATION.
 - 8 PROVIDE NEW FIBER CONNECTION MODULE HARDWARE PER FIRE ALARM SYSTEM EQUIPMENT SHEET #E21 FOR ADDITIONAL INFORMATION.
 - 9 SPARE SPEAKER CHANNELS FOR FUTURE USE.
 - 10 PROVIDE "END-OF-LINE" RESISTORS AT ALL UNUSED OUTPUTS. TYPICAL.
 - 11 JUNCTION BOX IN ACCESSIBLE ATTIC SPACE OF BUILDING #R0B PER FIRE ALARM PLAN.
 - 12 ROUTE STROBE CIRCUIT THROUGH DUAL SYNCH MODULE.
 - 13 PROVIDE TWO DEDICATED CATEGORY 3, 4-PAIR TEL. CABLES.
 - 14 SET INTERIOR SPEAKER TAPS AT 1/2 WATT, TYPICAL.
 - 15 3/4" - ONE, STRANDED, 4-PAIR (16 GA.) NON-SHIELDED CABLE.
 - 16 TWO SECTION SURFACE NON-METALLIC RACEMAY. IN "FA" SECTION, PULL IN 2 #14.
 - 17 1 1/4" - THREE, STRANDED, 2-PAIR (16 GA.) SHIELDED CABLE + ONE "FA" CABLE.
 - 18 PROVIDE SUPERVISED OUTPUT MODULE. LOCATE ADJACENT TO EXPANDER PANEL IN A 4" SQ. x 2 1/8" D. JUNCTION BOX.
 - 19 ONE "SFA" CABLE.
 - 20 SET EXTERIOR SPEAKER TAPS AT 1 WATT, TYPICAL.
 - 21 1/2" - 2 #12.

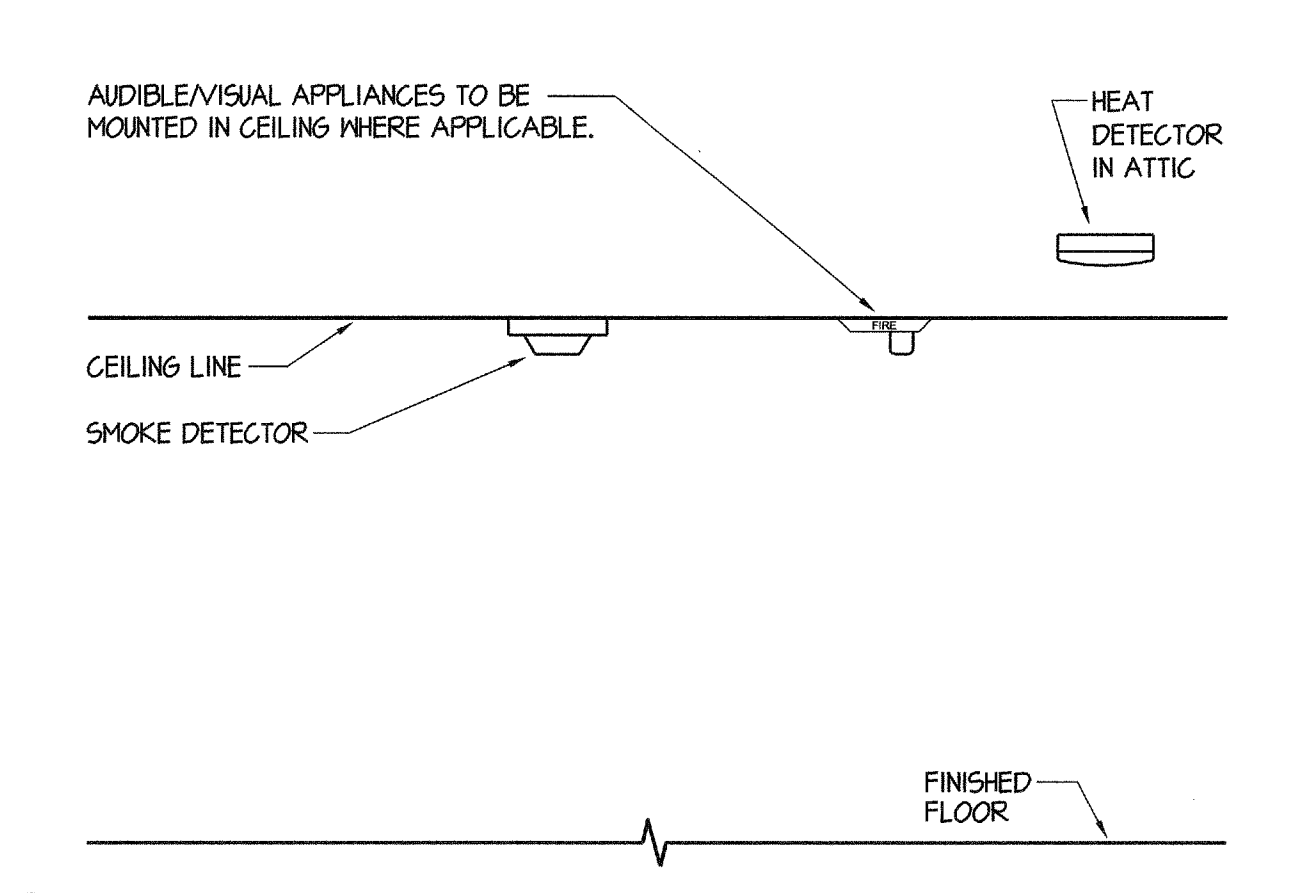
1 FIRE ALARM SYSTEM RISER DIAGRAM



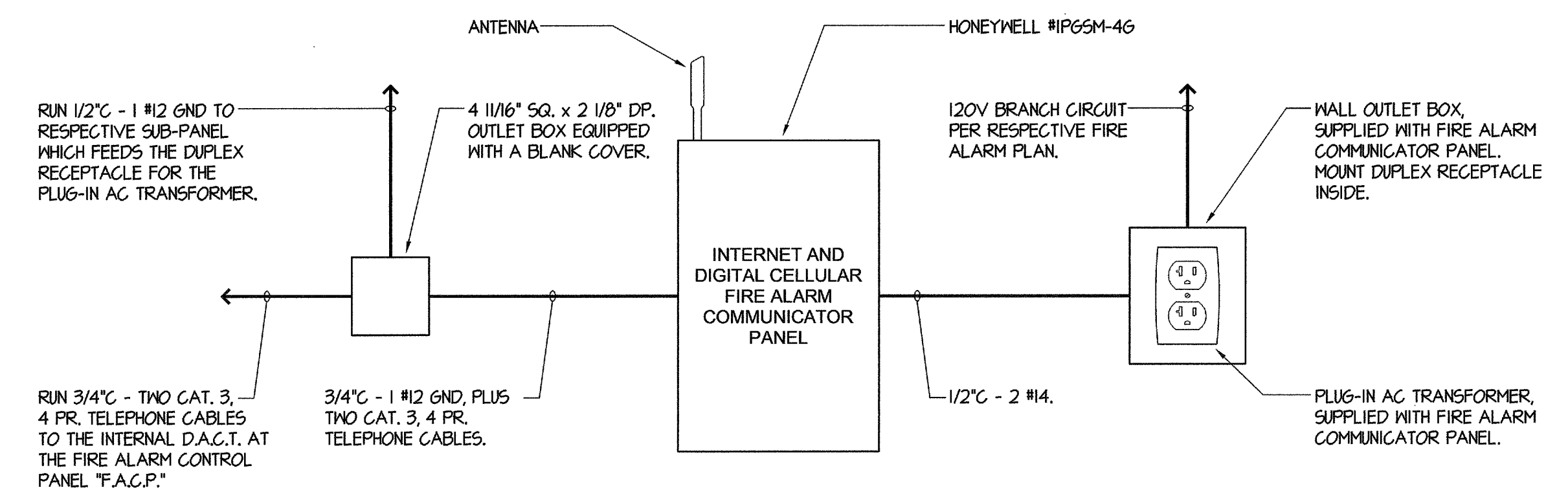
2 FIRE ALARM EQUIPMENT WIRING DIAGRAMS



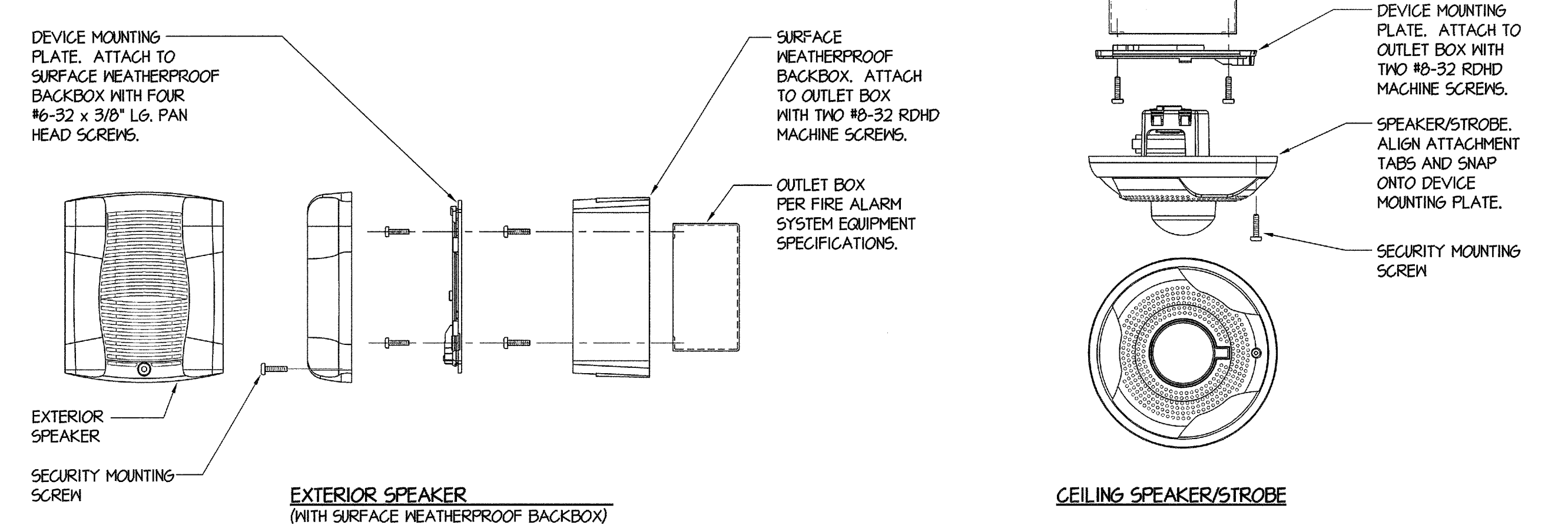
4 FIRE ALARM DEVICE MOUNTING



5 FIRE ALARM DEVICES ELEVATION



3 FIRE ALARM COMMUNICATOR PANEL WIRING DIAGRAM



COMPLETE AUTOMATIC FIRE ALARM SYSTEM PLAN SUBMITTAL

THE FIRE ALARM SYSTEM SHOWN ON THESE PLANS HAS BEEN SUBMITTED AND APPROVED BY THE DIVISION OF THE STATE ARCHITECT. ANY SUBSTITUTION OF THE FIRE ALARM SYSTEM SHALL BE RESUBMITTED TO THE ARCHITECT FOR REVIEW AND APPROVAL. THE CONTRACTOR SHALL PAY ANY ADDITIONAL FEES THAT ARE INCURRED DUE TO THIS SUBSTITUTION.

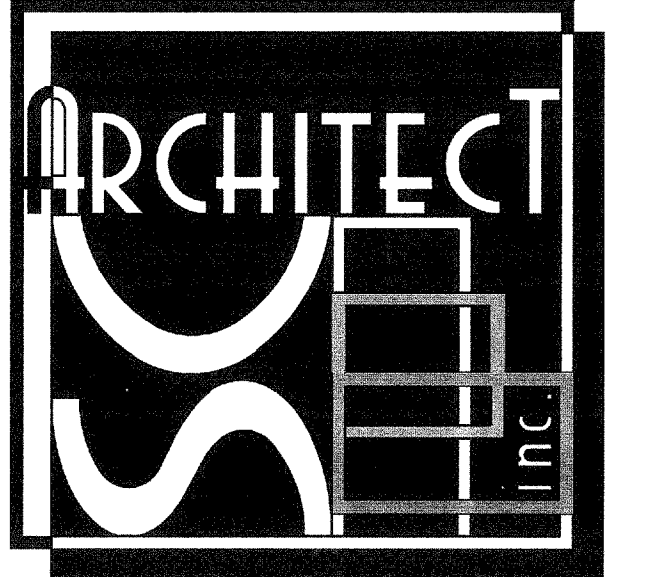
THE FIRE ALARM SYSTEM SHALL BE A TOTAL (COMPLETE) AUTOMATIC HEAT AND SMOKE DETECTION SYSTEM PER C.F.C. SECTION 901.2.3.6, AND SHALL COVER EVERY ROOM AND/OR AREA. UPON THE ACTIVATION OF ANY INITIATION DEVICE THE FIRE ALARM SYSTEM SHALL ALERT ALL OCCUPANTS AND TRANSMIT THE ALARM SUPERVISORY, AND TROUBLE SIGNALS TO AN APPROVED SUPERVISING STATION (C.F.C. SECTION 901.2.3.5).

MARK	DATE	REVISIONS
△		
△		
△		

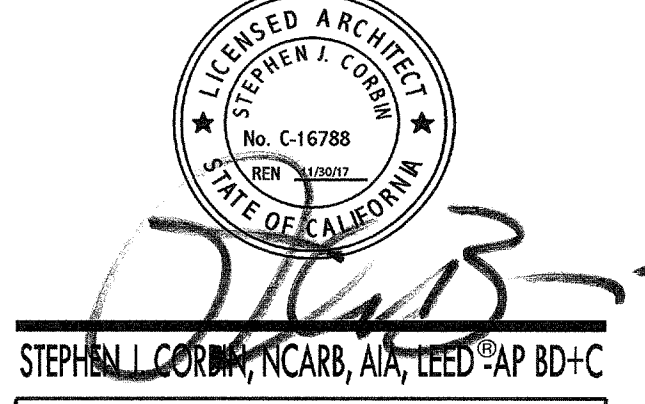
CHECK AND VERIFY ALL DIMENSIONS BEFORE PROCEEDING WITH THE WORK. REPORT DISCREPANCIES TO THE ARCHITECT. ALL CONSTRUCTION SHALL CONFORM TO THE C.B.C.

HORACE MANN ELEMENTARY SCHOOL
SITE IMPROVEMENTS FOR (4) MODULAR CLASSROOMS
 2710 NILES STREET
 FOR
BAKERSFIELD SCHOOL DISTRICT
 BAKERSFIELD, KERN COUNTY, CALIFORNIA

IDENTIFICATION STAMP
 DIV. OF THE STATE ARCHITECT
 OFFICE OF REGULATION SERVICES
 APPL. 03-116-ATTB
 FILE: 15-6
 AC: MAY 14 11 55 P.M.
 DATE: MAY 08 2016
 PTN: 63321-206



1601 NEW STINE ROAD, SUITE 280
 BAKERSFIELD, CA 93309
 PH: (661) 397-4377
 FAX: (661) 397-4378
 WWW.SCARCHITECT.COM



Rose Sing and Associates, Inc.
 Electrical Consultants
 131 S. Dunworth - (559) 733-2671
 Visalia, California 93292-6705

FIRE ALARM SYSTEM RISER

JOB NO. 1218
 DRAWN: CS
 CHECKED: DS
 DATE: 04-26-16

3.2
 OF SHEETS