

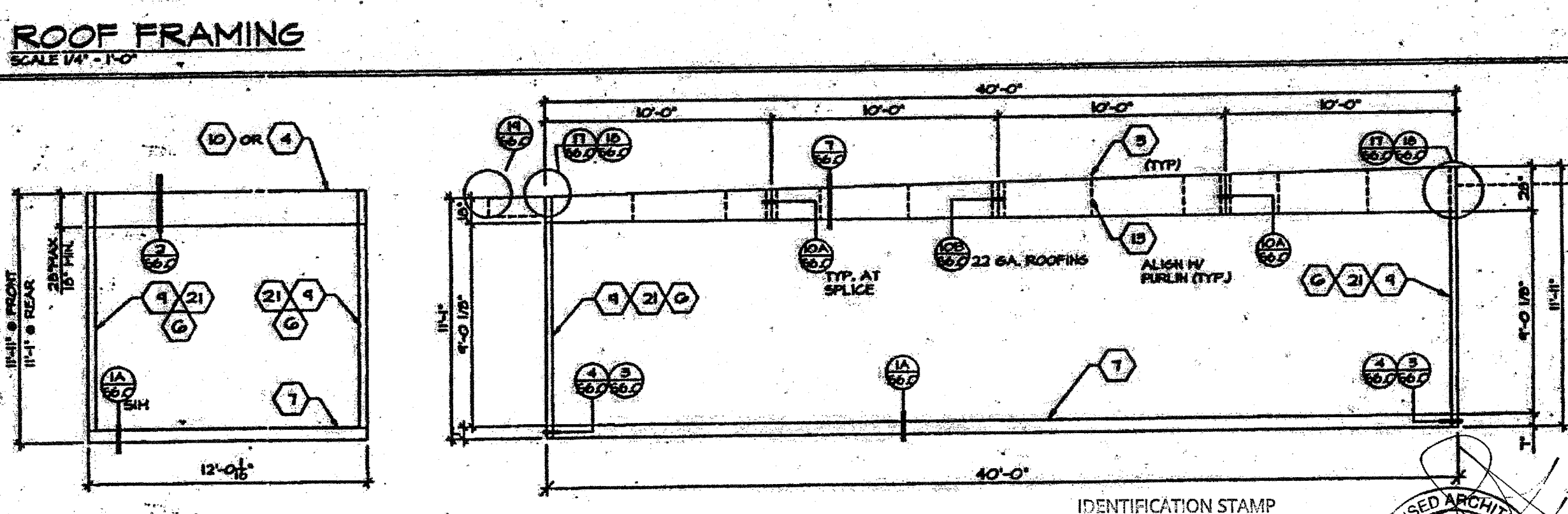
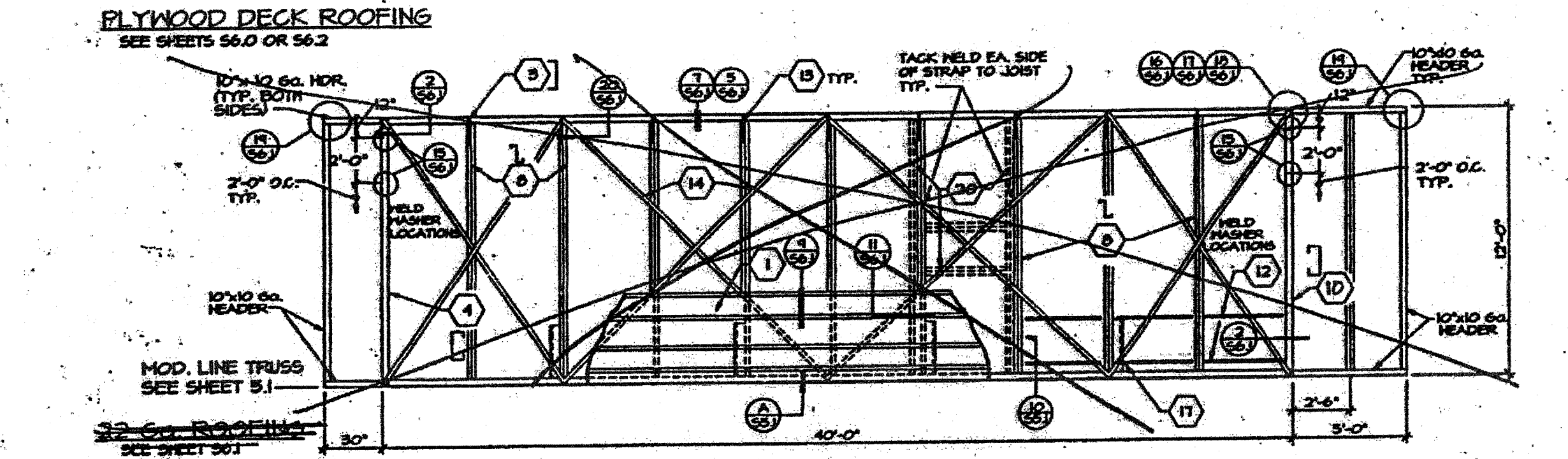
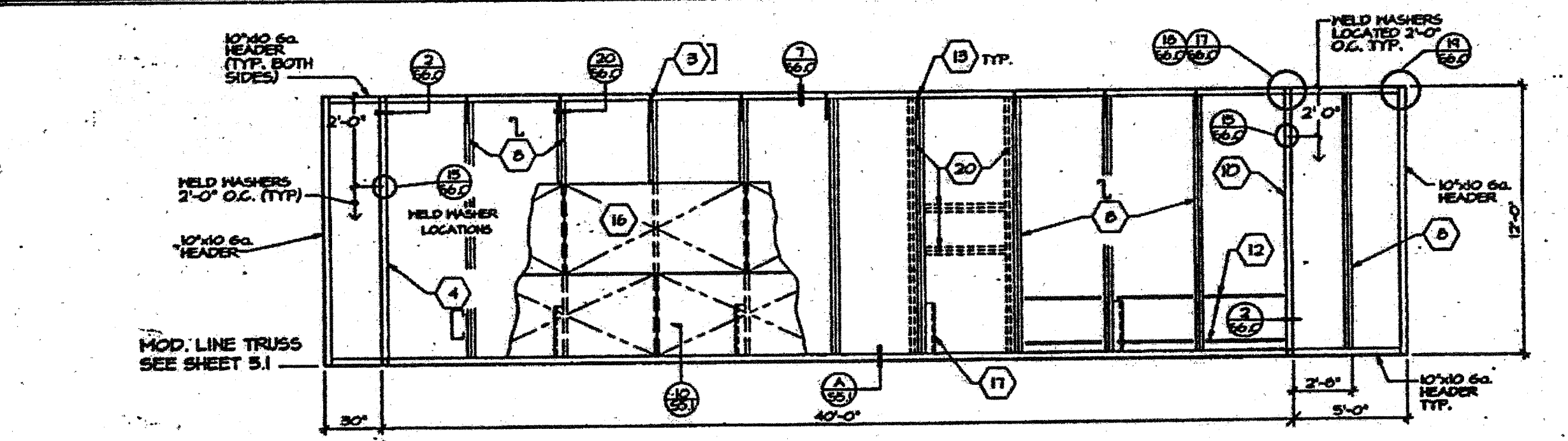
KEYNOTES

- 1 STEEL ROOF DECK - 22 GA. ROLL FORMED DECK WITH 2" STANDING SEAM. SEE NOTE 1 SHT. 56.0 FOR ATTACH.
- 2 PLYWOOD FLOOR SHEATHING - 1/2" A.P.A. STURD-FLOOR, T & G, P.S. 1-80. SEE NOTE 2 SHT. 56.0 OR 56.2 FOR ATTACH.
- 3 DIMENSIONS 1/2" MO GA.
- 4 DIMS 1/2" MO GA. RFG STEEL ROOF HEADER.
- 5 1 1/2" H GA. STEEL BLOCK @ 40" O.C.
- 6 STEEL COLUMN - 3 1/2" x 1/2" x 1/4" TUBE @ 10' O.C.
- 7 1 1/2" x 4.0 LB PERMETER FLOOR FRAME.
- 8 1 1/2" x 14 GA. STEEL ROOF JOIST @ 40" O.C.
- 9 STEEL COLUMN - 3 1/2" x 1/2" x 1/4" TUBE @ 80' O.C.
- 10 DIMS 1/2" MO GA. RFG STEEL ROOF HEADER.
- 11 HELD WASHER FOR CEILING GRID - TYP. BOTH SIDES. SEE DETAIL 10 SHT. 56.0 OR 56.1
- 12 STRAP FRAMED TO UNDERSIDE OF JOIST @ 24" O.C. FOR INSULATION SUPPORT.
- 13 3/8" FULL HEIGHT STIFFENER AT PURLIN LOCATIONS.
- 14 2 1/2" x 20 GA. STRAPS W/ 5" MIN. 100# FILLET HELD EACH END TO ROOF BEAM/HEADER TYP.
- 15 1 1/2" H GA. STEEL FLOOR JOIST & SEE FRAMING PLAN FOR FLOOR JOIST SPACINGS
- 16 PLYWOOD ROOF SHEATHING 3/4" C-D HIT WITH EXT. GLUE 4024 RESIN, POLYURETHANE EDGE WITH PLYWOOD CLIPS @ 16" O.C. LONG EDGES
- 17 1 1/2" x 1/2" x 3/16" BRACE (SEE SHT. 56.0 DET. 10)
- 18 1 1/2" x 14 GA. STEEL FLOOR JOIST @ 16" O.C.
- 19 1 1/2" x 14 GA. STEEL BLOCK @ 40" O.C.
- 20 DOUBLE PURLIN WITH 5" x 14 GA. PURLIN BLOCKS & ROOF MOUNTED HVAC-SEE MECHANICAL PLANS FOR EXACT SIZE AND LOCATION.
- 21 4" x 4" x 1/4" ALT. TUBE STEEL AT ISOLATORS WITH PARAPET AND HVAC SCREEN OPTION.

CBC 1998

PC

IDENTIFICATION STAMP
DIV. OF THE STATE ARCHITECT
A 03117511
AC / FLS / SS / 87
Date JUL 27 2016



STRUCTURAL ELEVATION
SCALE 1/4" = 1'-0"

IDENTIFICATION STAMP
DIV. OF THE STATE ARCHITECT
04 115204
ACS / FLS / SS / PAC
DATE APR 14 2016

RELEASED ARCHITECT
JACK SHIVELY
NO. 5-5846
JAN 31 2017
RENEWAL DATE
STATE OF CALIFORNIA

D.S.A.
IDENTIFICATION STAMP
DIV. OF THE STATE ARCHITECT
04-101055
DATE JUN 27 2016

D.S.A.
PORTION 1
DEG. 1000
STRUCT. ENGINEER

ARCHITECT
MURORA MODULAR INDUSTRIES
11833 Newport Ave., Newport, CA 95058
Phone: 925.772.2211
Fax: 925.772.2211

CHANGE ORDER

CHECKED BY

MONO SLOPE FLOOR FRAMING, ROOF FRAMING, STRUCTURAL ELEVATIONS (70 MPH (C))

SHEET
S4.1