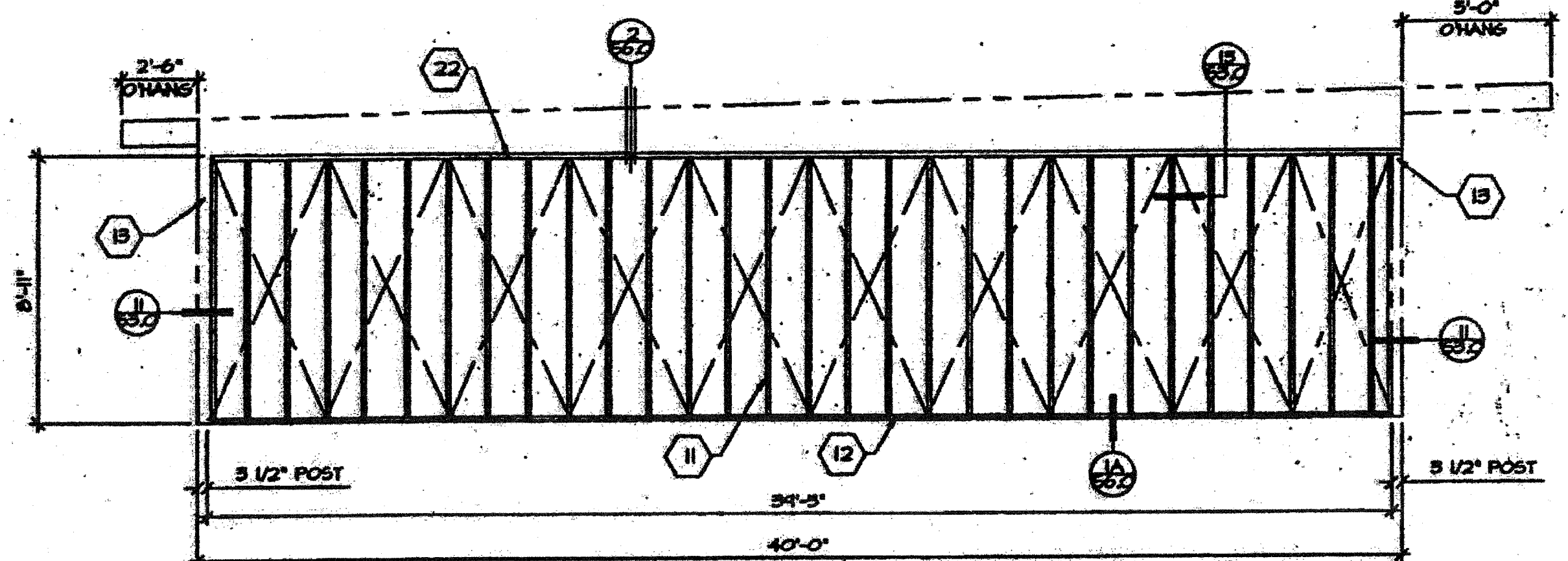


**BUILDING SECTIONS**  
SCALE: 1/4" = 1'-0"

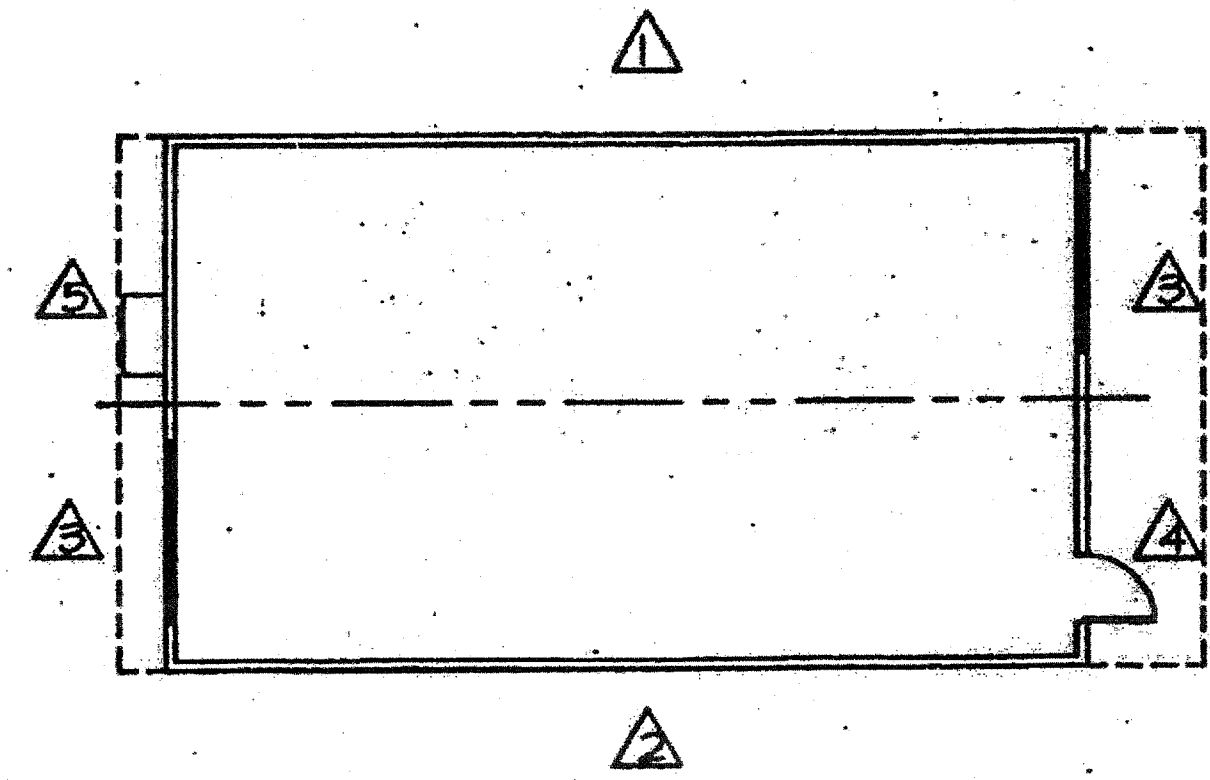
**KEYNOTES**

- 1 ROOF SHEATHING- SEE SHEET 41
- 2 STEEL ROOF JOIST- SEE SHEET 54J
- 3 R-11 FIBERGLASS INSULATION ON METAL STRAPS.
- 4 SUSPENDED CEILING- SEE SHEET AS.0
- 5 TYPICAL INTERIOR FINISH- SEE SHEET 41
- 6 R-11 FIBERGLASS INSULATION.
- 7 FLYWOOD FLOOR SHEATHING- SEE SHEET 54J
- 8 STEEL FLOOR JOIST- SEE SHEET 54J
- 9 NOT USED
- 10 FLYWOOD SIDING/SHEATHING- SEE SHEET 4.0 FOR MATERIAL. NAIL SIDING WITH CORROSION RESISTANT 63 BOX NAILS @ 6" BOUNDARY & EDGES, 12" FIELD.
- 11 STUDS- 2x4 H.F. STUD GRADE @ 16" O.C.
- 12 BOTTOM PLATE- 2x4 H.F. STUD GRD. & BETTER
- 13 STEEL FRAME- SEE SHEET 54J "STRUCTURAL ELEVATIONS" FOR MEMBER TYPES AND SIZES.
- 14 WINDOW HEADER- (2) 2x4 H.F. STUD GRD. FLAT.
- 15 FRAME FOR 8'-0" x 4'-0" WINDOW. USE (2) FULL HEIGHT H.F. 2x4 STUDS W/ 1 2x4 TRIMMER BOTH SIDES AND (2) 2x4 PLAT FOR WINDOW SILL. USE (4) FULL HEIGHT STUDS AT 80 MPH W/ STUCCO.
- 16 FRAME FOR 8'-0" x 6'-0" DOOR. USE (2) FULL HEIGHT 2x4 JAMB STUDS WITH (1) 2x4 TRIMMER BOTH SIDES, & (2) 2x4 PLAT FOR HEADER. SEE DETAIL 1 SHEET 55.0
- 17 NAIL THRU VERTICAL STUD INTO HORIZ. HEAD OR SILL W/ MIN. (4) 16d NAILS PER CONNECTION. TYPICAL AT CORNERS OF ALL OPENINGS.
- 18 4x4 H.F. POST
- 19 SEE SHEET 41 FOR AVG SIZE AND TONNAGE OF MECHANICAL PLANT
- 20 SIMPSON A35 CLIPS (4) PLACES TO TOP AND BOTTOM PLATES.
- 21 SIMPSON A35 CLIPS (4) PLACES TO WINDOW SILL AND HEADER OR (2) PLACES TO DOOR HEADER.
- 22 2x4 PLATE- 11P STANDARD OR BETTER
- 23 FIRE BLOCKING PER SEC. 706, 1994 C.B.C.

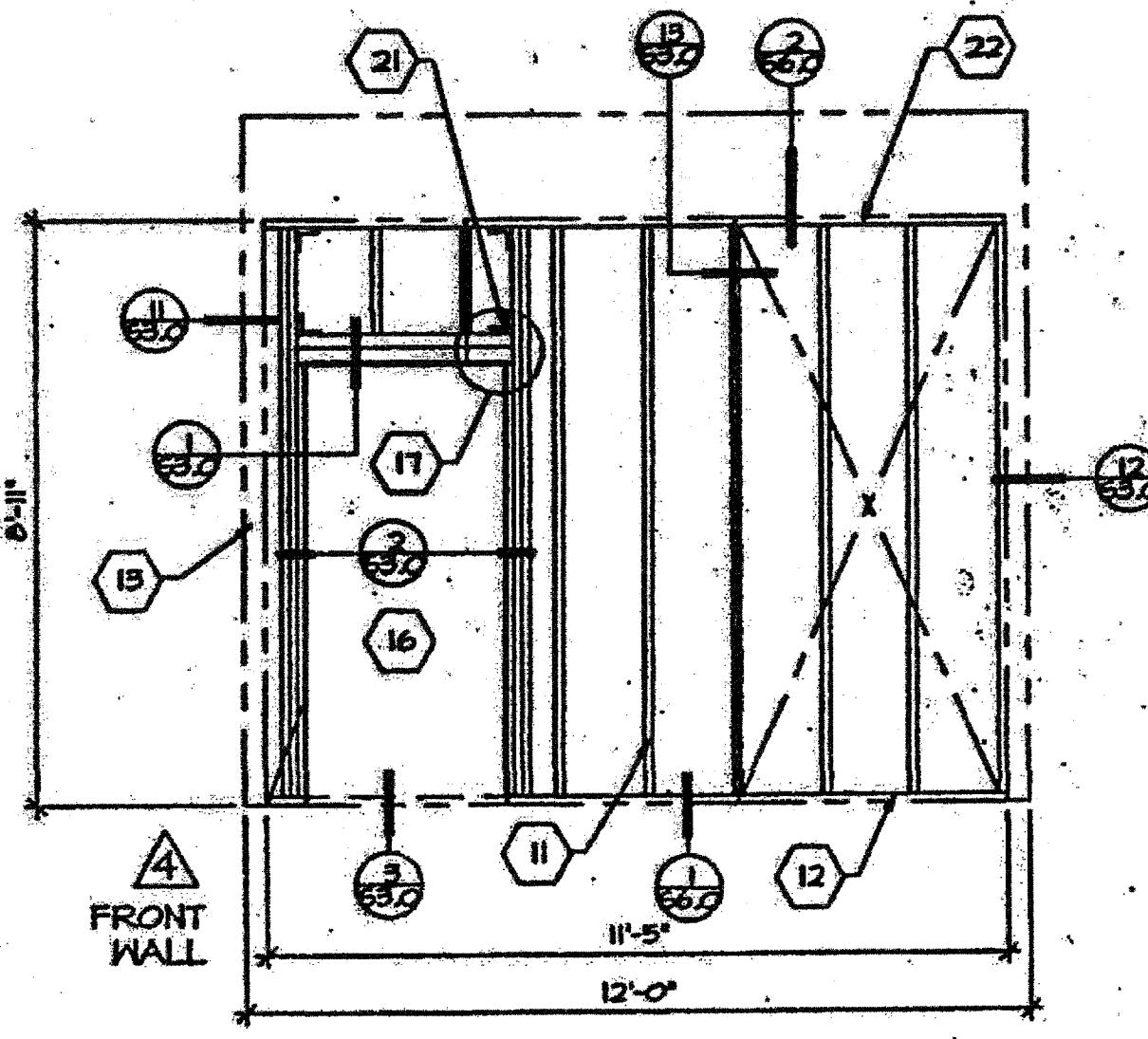
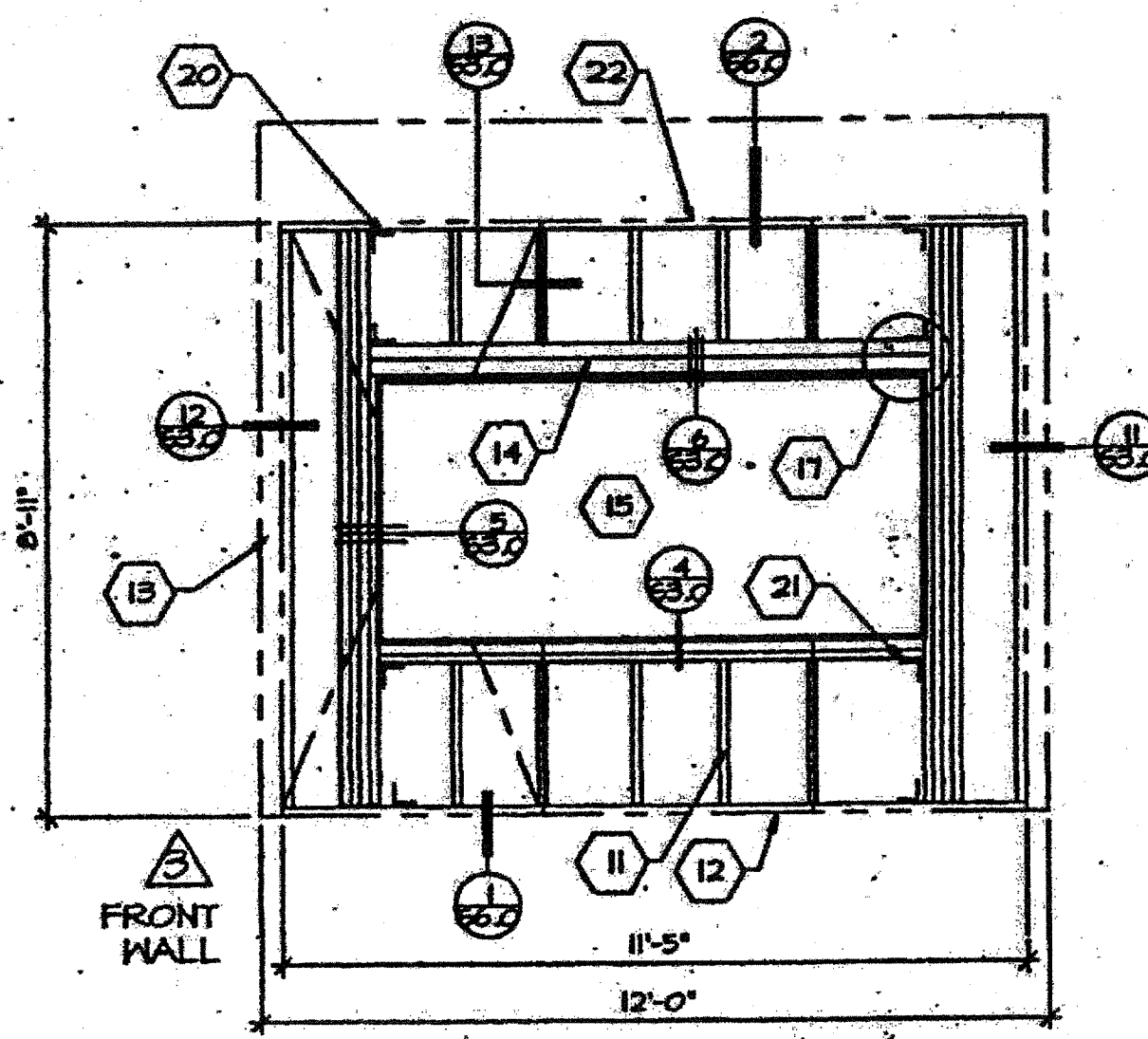


**TYPICAL SIDEWALL**  
SCALE: 1/4" = 1'-0"

WALL  $\triangle$  SHOWN  
WALL  $\triangle$  OPP. HAND



**WALL LOCATIONS**  
SCALE: 1/8" = 1'-0"



**TYPICAL ENDWALLS**  
SCALE: 3/8" = 1'-0"

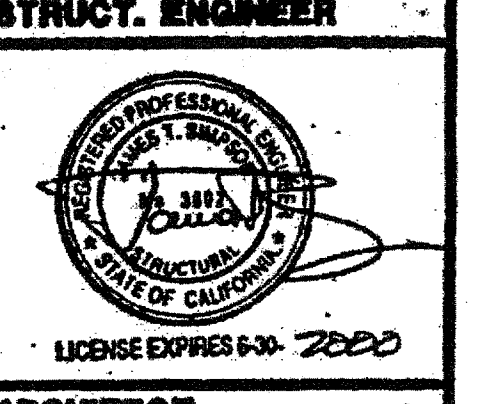
IDENTIFICATION STAMP  
DIV. OF THE STATE ARCHITECT  
A 03117375  
AC / FLS / SS / BY  
Date JUL 27 2016

IDENTIFICATION STAMP  
DIV. OF THE STATE ARCHITECT  
04115204  
AC / FLS / SS / RAF  
Date APR 14 2016



**D.S.A.**  
IDENTIFICATION STAMP  
DIV. OF THE STATE ARCHITECT  
OFFICE OF REGULATION SERVICES  
04-101055  
AC / FLS / SS  
DATE JUN 29 2016

**D.S.A.**  
PORTION 1  
REGISTRATION STATE  
04-101055  
DATE JUN 29 2016



**ARCHITECT**

**CHANGE ORDER**

**CHECKED BY**

1833 Kromberg Ave., Riverside, CA 92504  
Tel: (951) 758-2323  
**URORA MODULAR INDUSTRIES**

**BUILDING SECTIONS,  
WALL FRAMING  
MONO SLOPE  
WOOD STUDS  
(24x40)**

**SHEET**  
**S.W.**