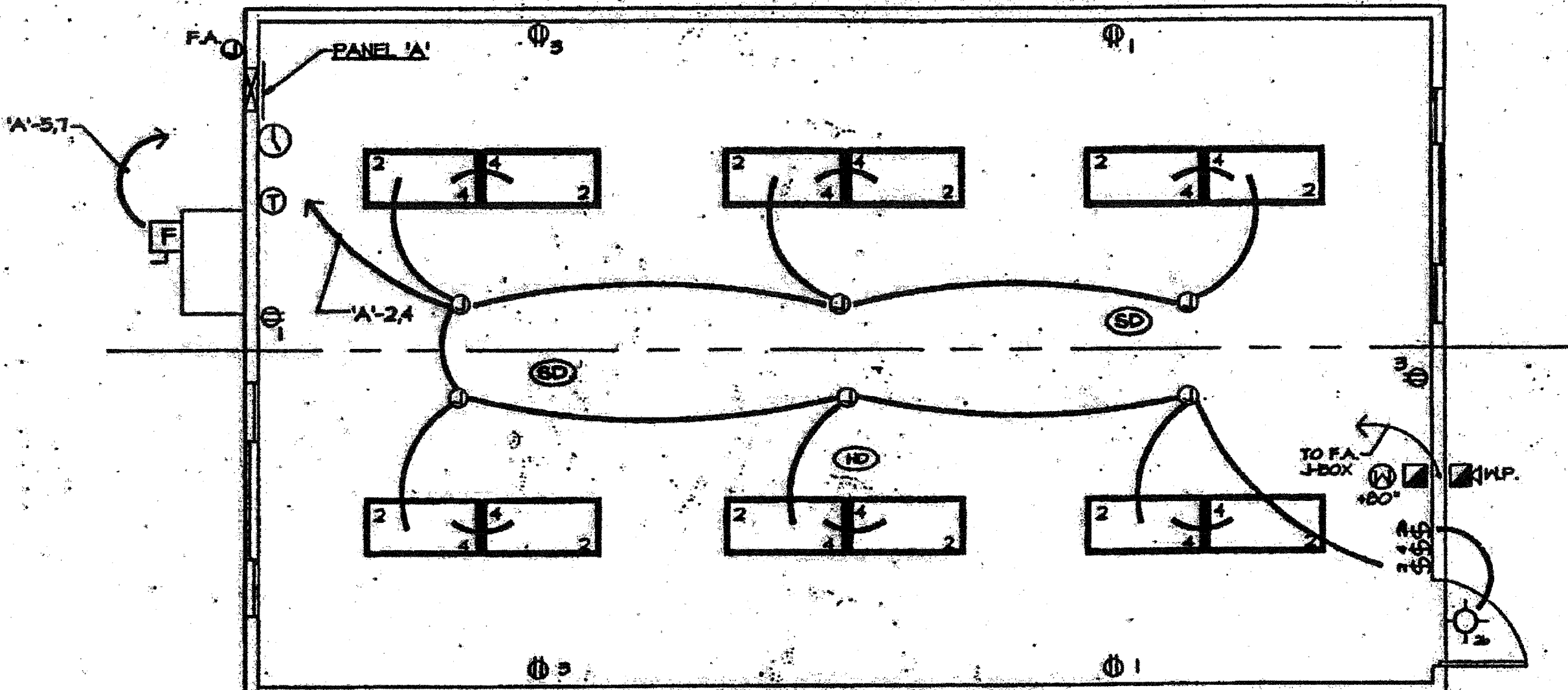


PANEL A 120/240 VOLT 1 PHASE 3 WIRE

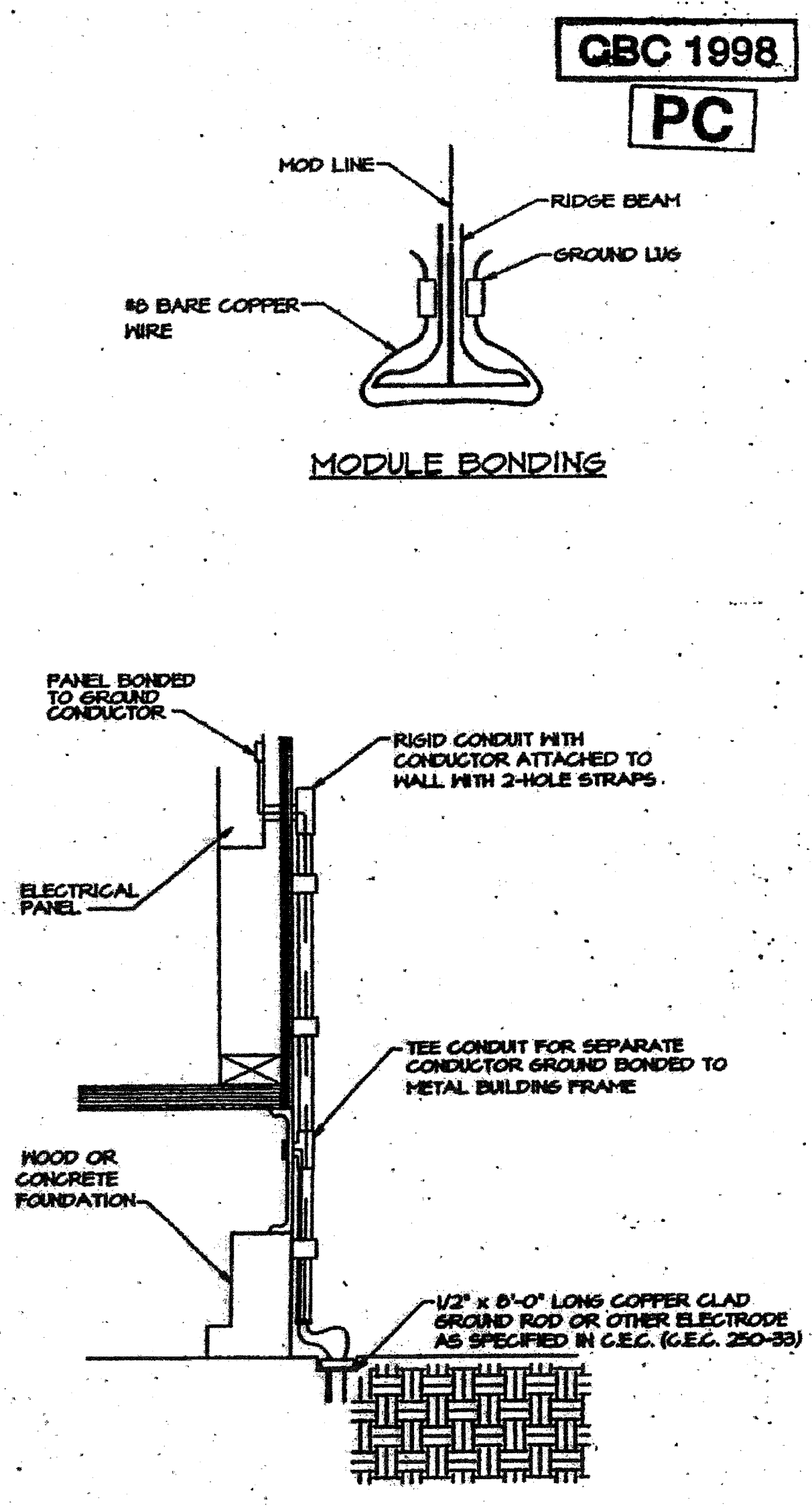
OUTLETS		WATTAGE			BREAKER		REMARKS
recept	lights	A #	B #	C #	amp	poles	
1	3	—	540	—	20	1	
2	—	12	1060	—	20	1	
3	3	—	540	—	20	1	
4	—	12	960	—	20	1	
5	—	HEATPUMP	5580	—	60	2	59 TON HVAC
6	—	—	—	—	—	—	
7	—	—	5580	—	—	—	
8	—	—	—	—	—	—	
9	1	—	180	—	20	1	CLOCK OUTLET
10							
11							
12							
13							
14							
15							
16							
17							
18							
19							
20							
TOTALS			7660	7580			15.04kVA 62.7 amps conv.
							FLA x 1.25 = 78.0 amps

FIXTURE SCHEDULE

SYMBOL	DESCRIPTION	WATTS	MANUFACTURER
□	2' x 4' FLUORESCENT DROP IN FIXTURE, ACRYLIC PRISMATIC LENS, ENERGY SAVING BALLAST, (4) 40 WATT TUBES, HT, 21 IN.	140 WATTS	CRESCENT "CRES-CO" OR EQUAL
⊙	INCANDESCENT SURFACE MOUNTED EXTERIOR LIGHT WITH IMPACT RESISTANT ENCLOSURE	100 WATTS	GENERAL ELECTRIC 3066S OR EQUAL
⊕ + 15"	DUPLEX RECEPT - 15A 125V 3 WIRE GROUNDING TYPE.	150 WATTS	GENERAL ELECTRIC 5242-2 OR EQUAL
⊕ + 40"	LIGHT SWITCH - SINGLE POLE		GENERAL ELECTRIC 5401-2 OR EQUAL
⊕	JUNCTION BOX		
F	DISCONNECT SWITCH - BUILT INTO A/C UNIT		
⊕ + 40"	THERMOSTAT		WHITE ROGERS
⊕ + 40"	FIRE ALARM PULL STATION (J-BOX ONLY)		
⊕ + 40"	FIRE ALARM HORN (J-BOX ONLY) (RIP - INDICATES HEATER/FLOOR)		
⊕	ELEC. PANEL		50" OR EQUAL
⊕	ELEC. CLOCK 6" BELOW CEILING LINE		WESTCLOK 101 OR EQUAL
EXIT	EXIT SIGN W/ BATTERY BACK-UP EMERGENCY LIGHTING MOUNTED ABOVE DOOR		
⊕ + 20"	VISUAL WARNING DEVICE - 60 FLASHES PER MINUTE (J-BOX ONLY)		
⊕	CEILING MOUNTED SMOKE DETECTOR @ 15'-0" FROM SIDEWALL @ 10'-0" FROM ENDWALL (J-BOX ONLY)		
⊕	ATTIC HEAT DETECTOR (J-BOX ONLY)		



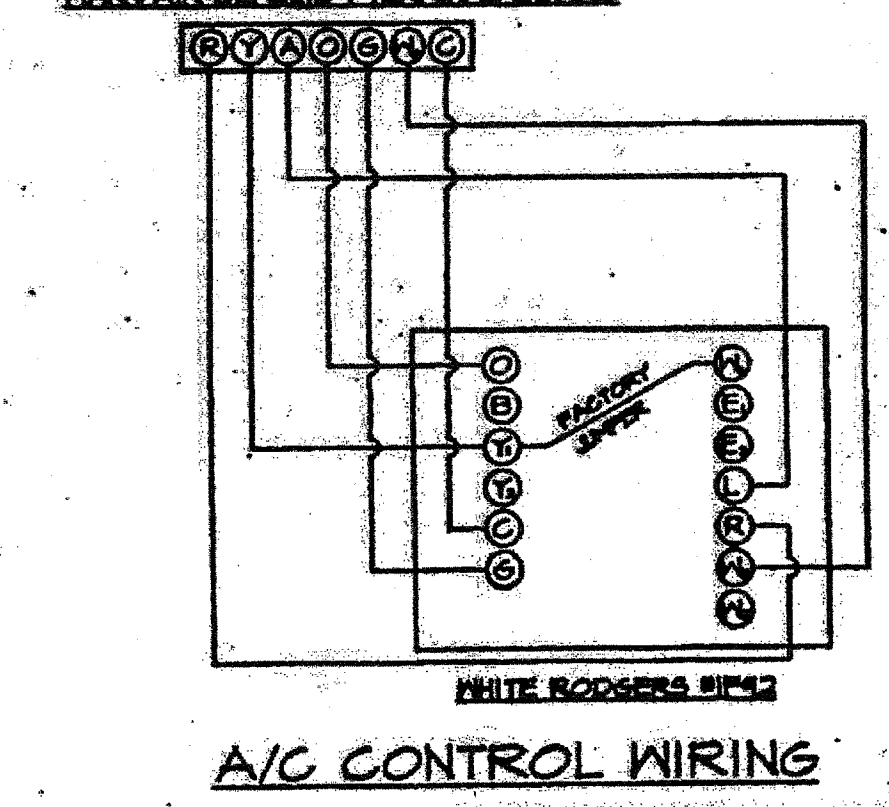
LIGHTING AND POWER PLAN
SCALE: 1/4" = 1'-0"
NOTE: SEE A11-01 FOR ACTUAL LAYOUT / CONFIGURATION



- SYSTEM GROUND DETAIL
NOT BY PORTABLE MANUFACTURER.
- SIZE OF CONDUCTORS SHALL COMPLY WITH CEC TABLE 250-15.
 - BOND SEPARATE CONDUCTORS FROM GROUND ROD TO ELECTRICAL PANEL AND TO METAL BUILDING FRAME (CEC 250-51). IN ADDITION TO THE DETAIL SHOWN ABOVE, BOND THE ELECTRICAL GROUND TO METAL WATER PIPE EMBEDDED AT LEAST 10 FT. INTO THE SOIL IF AVAILABLE. (CEC 250-51 & 250-53).
 - ALL MODULES OF THE METAL FRAME BUILDERS SHALL BE ELECTRICALLY BONDED TOGETHER. (BOLTING ONLY IS NOT ACCEPTABLE BONDING.)
 - CHECK RESISTANCE TO GROUND. IF RESISTANCE EXCEEDS 25 OHMS, INSTALL ADDITIONAL GROUND RODS (CEC 250-54) AS REQUIRED. WITH CONDUCTORS AS SHOWN, SEPARATED BY AT LEAST 6'-0" UNTIL RESISTANCE IS 25 OHMS OR LESS.
 - FIELD INSPECTOR SHALL WITNESS AND VERIFY THE GROUNDING TEST.

IDENTIFICATION STAMP
DIV. OF THE STATE ARCHITECT
A 113 117 575
Date JUL 27 2016

IDENTIFICATION STAMP
DIV. OF THE STATE ARCHITECT
04 115 204
Date APR 13 2016



USE THESE APPROVED SYMBOLS IN ALL DRAWINGS
JUL 27 2016
DATE OF CALIFORNIA

GBC 1998
PC

D.S.A. IDENTIFICATION STAMP
DIV. OF THE STATE ARCHITECT
OFFICE OF REGULATION SERVICES
04 - 101055
DATE JUL 27 2016

D.S.A. PORTION 1
ARCHITECT
1 LICENSE EXPRESS # 30170002

CHANGE ORDER

CHECKED BY

JUPURA MODULAR INDUSTRIES
18333 Kinnaman Ave., Riverside, CA 92504
Phone (951) 782-7186
Fax (951) 782-0353

ELECTRICAL, POWER & LIGHTING FLOOR PLAN & PANEL SCHEDULE

DATE: 7/27/16