

DOOR SCHEDULE									
DOOR NO.	DOOR SIZES	TYPE	FRAMING TYPE	GLASS	FINISH RATING	FRAME TYPE	MARKER BOARD	DOOR SPECIFICATION	
1	3'-0" x 6'-0" x 1 3/4"	A	STL			A	1	10 GA. FULL FLUSH	
2	3'-0" x 6'-0" x 1 3/4"	A	STL			A	2	10 GA. FULL FLUSH	

DOOR HARDWARE GROUP #1		DOOR HARDWARE GROUP #2	
ITEM	DESCRIPTION	ITEM	DESCRIPTION
LOCK SET	LEVER HANDLE, SCHLAGE D105 RHODES, 260 FINISH	PANIC	VON DUPRN 2260, 260 FINISH
HINGES	WASAR RC 1274 BB 4.5" x 4.5" NRP PC	HINGES	WASAR RC 1274 BB 4.5" x 4.5" NRP PC
CLOSER	NORTON 1601, 8 LBS. CLOSING PRESSURE	CLOSER	NORTON 1601, 8 LBS. CLOSING PRESSURE
THRESHOLD	FEIKO 271A	THRESHOLD	FEIKO 271A
KICKPLATES	FEIKO 216AV	DOOR BOTTOM	FEIKO 216AV
WEATHER-STRIP	FEIKO 214AV	WEATHER-STRIP	FEIKO 214AV
DOOR STOP	QUALITY 1201 ES	DOOR STOP	QUALITY 1201 ES

DOOR HARDWARE GROUP #3		DOOR HARDWARE GROUP #4	
ITEM	DESCRIPTION	ITEM	DESCRIPTION
LOCK SET	LEVER HANDLE, SCHLAGE D105 RHODES, 260 FINISH	LOCK SET	LEVER HANDLE, SCHLAGE D105 RHODES, 260 FINISH
HINGES	WASAR RC 1141 BB 4" x 4"	HINGES	WASAR RC 1141 BB 4" x 4"
DOOR STOP	QUALITY 1201 ES	DOOR STOP	QUALITY 1201 ES

DOOR HARDWARE GROUP #5		DOOR HARDWARE GROUP #6	
ITEM	DESCRIPTION	ITEM	DESCRIPTION
LOCK SET	LEVER HANDLE, SCHLAGE D105 RHODES, 260 FINISH	LOCK SET	LEVER HANDLE, SCHLAGE D105 RHODES, 260 FINISH
HINGES	WASAR RC 1141 BB 4" x 4"	HINGES	WASAR RC 1141 BB 4" x 4"
DOOR STOP	QUALITY 1201 ES	DOOR STOP	QUALITY 1201 ES

WINDOW SCHEDULE			
WINDOW SIZES	FRAME	GLAZING TYPE	SPECIAL NOTES
0'-0" x 4'-0"	AL	1 & 5	ALUMINUM FRAMED SCREENS ON OPERABLE SASH.

EXTERIOR FINISH			
MATL	DESC.	MFG.	SPECIFICATION
SIDING	4' x 9' x 5/8"	DURATEMP	APA RATED OR EQUAL, GROUP I, TYPE 303 EXTERIOR SIDING
	BUILT-UP	6AFGLAS	N-3-3-M (SEE SPEC. ON SHEET 9)
ROOFING	26 Ga.	PLACER	
	22 Ga.	CAL. STEEL	
TRIM	WOOD 1"x4"	RESAWN	• DOORS

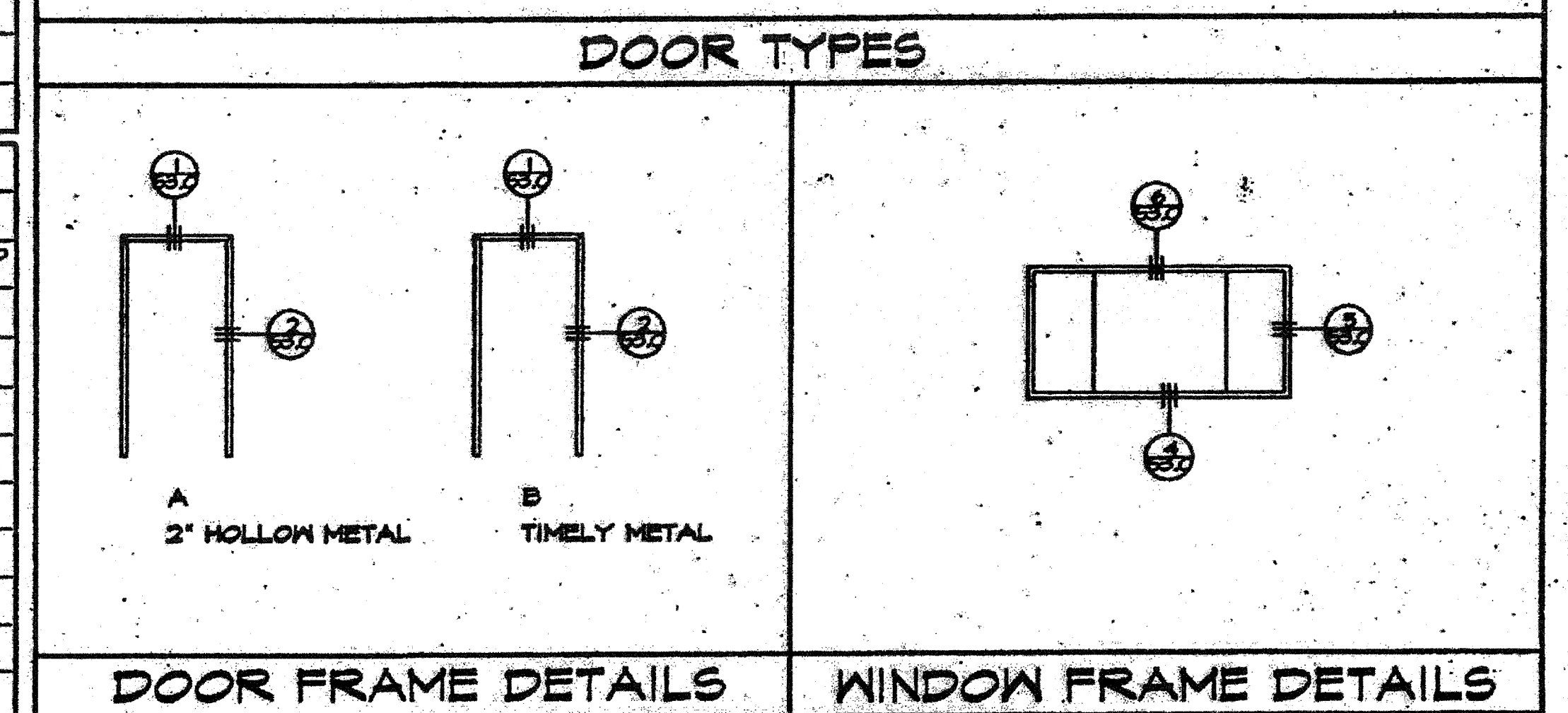
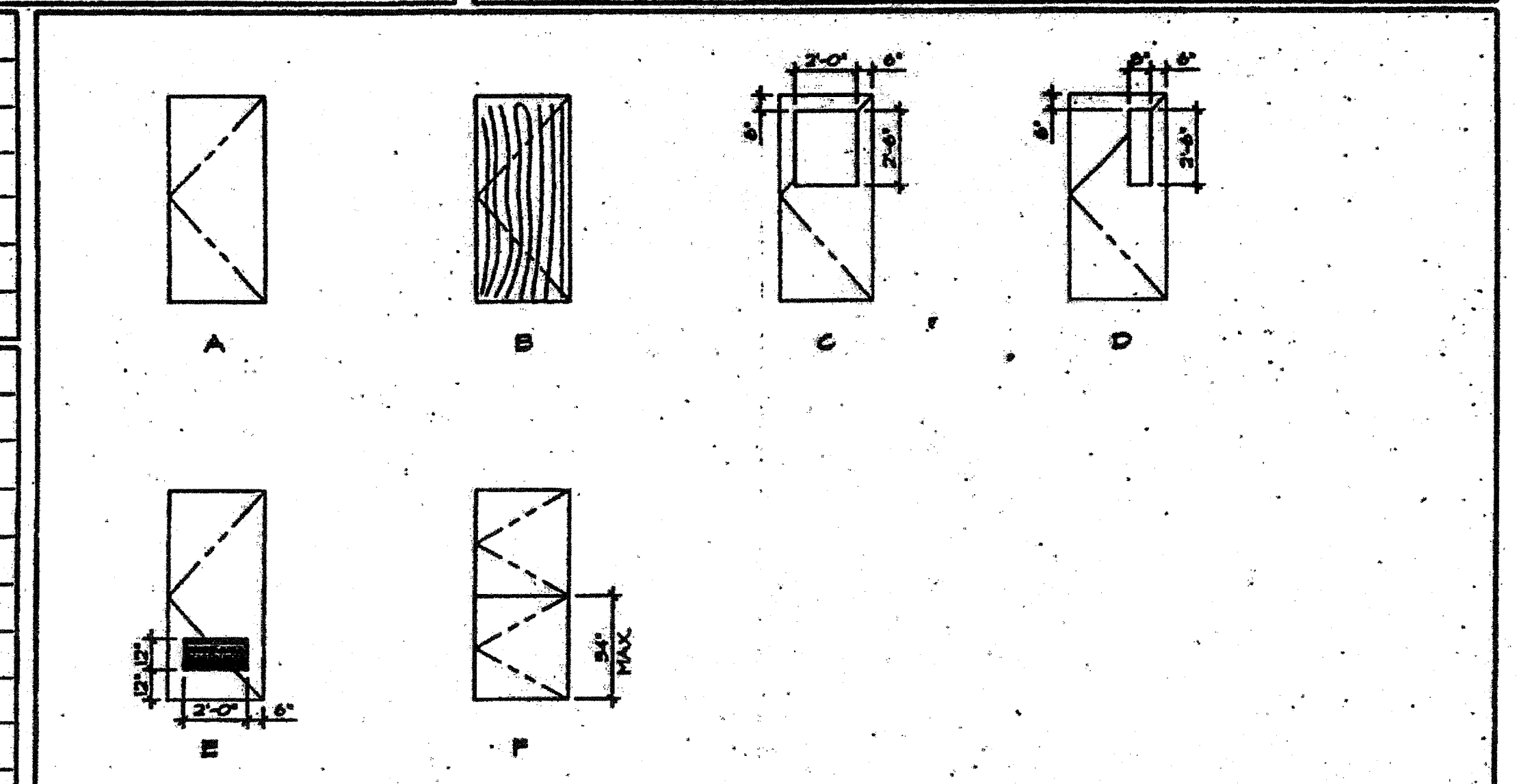
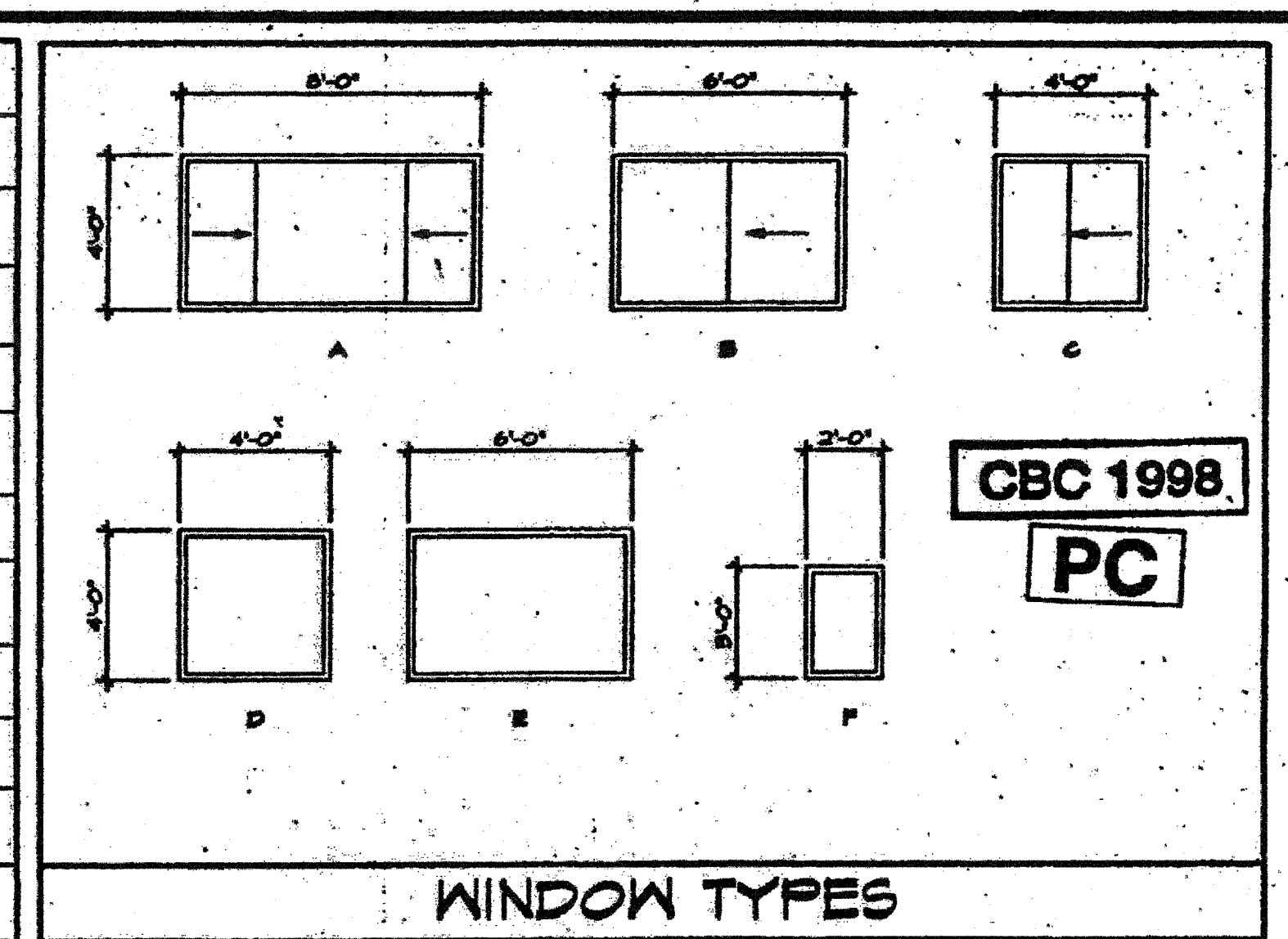
INTERIOR FINISH SPECIFICATIONS	
ITEM	DESCRIPTION
CARPET	COMPLYING WITH THE STATE OF CALIF. SPEC. T220-21K-01 GROUP 1 TYPE A, CLASS 24, DENSITY 1400, DIRECT GLUE DOWN. (SEE NOTE BELOW)
SHEET VINYL	ARMSTRONGS CLASSIC CORLON SHEET VINYL .065 GAUGE WITH 9" COVE BASE. COEFFICIENT OF FRICTION 0.5 MIN. (ASTM D2047)
VCT	VINYL COMPOSITION TILE WITH 4" TOP SET BASE. COEFFICIENT OF FRICTION 0.5 MIN. (ASTM D2047)
SUSPENDED	ARMSTRONGS T84 CEILING TILE (FLAME SPREAD CLASS I) WITH ARMSTRONGS HEAVY DUTY GRID. MAIN RUNNERS T301, CROSS RUNNERS-XL T326 OR XL 8225
GYP. BOARD	1/2" HP. GYP. BOARD TAPED AND PAINTED
VINYL	1/2" VINYL COVERED TACK BOARD (FLAME SPREAD CLASS I) OVER 1/2" GYP. BOARD.
F. R. P.	1/2" FULL HEIGHT FIBERGLASS REINFORCED PANELS (FRP) OVER 1/2" WATERPROOF GYP. BOARD PANELS.
CHALKBOARD	1/2" PARTICLE BOARD SUBSTRATE, FULL WIDTH MAP RAIL WITH CORK INSERT AND SIX MAP HOOKS, EXTRUDED ALUMINUM HOLDING WITH FLAG HOLDER.
MARKERBOARD	1/2" PARTICLE BOARD SUBSTRATE, FULL WIDTH MAP RAIL WITH CORK INSERT AND SIX MAP HOOKS, EXTRUDED ALUMINUM HOLDING WITH FLAG HOLDER.

INTERIOR FINISH SCHEDULE				
ROOM DESC. ROOM NO.	FLOOR	CEILING	WALLS	MISC.
CLASSROOM	CARPET	SUSPENDED	VINYL	

INTERIOR FINISH SCHEDULE				
ROOM DESC. ROOM NO.	FLOOR	CEILING	WALLS	MISC.
CLASSROOM	CARPET	SUSPENDED	VINYL	

INTERIOR FINISH SCHEDULE				
ROOM DESC. ROOM NO.	FLOOR	CEILING	WALLS	MISC.
RESTROOM	SHEET VINYL	SUSPENDED VR	FRP	MARKERBOARD (PORCELAIN)

A/C INFORMATION					
MANUFACT.	MARVAK	MANUFACT.	MARVAK	MANUFACT.	MARVAK
MODEL	AVP42HPA	MODEL	AVP60HPA	MODEL	AVP42HPA
SIZE	3.5 TON (1 UNIT)	SIZE	5 TON (1 UNIT)	SIZE	3.5 TON (2 UNITS)
SUPPLY	DUCTED	SUPPLY	DUCTED	SUPPLY	DUCTED
RETURN	DIRECT	RETURN	DIRECT	RETURN	DIRECT
HEAT STRIP	SEE SHT. E1.0	HEAT STRIP	SEE SHT. E1.1	HEAT STRIP	SEE SHT. E1.2
ELECTRICAL	SEE SHT. E1.0	ELECTRICAL	SEE SHT. E1.1	ELECTRICAL	SEE SHT. E1.2
24 X 40 CLASSROOM		86 X 40 CLASSROOM		48 X 40 CLASSROOM	



FRAME, DOOR & GLAZING TYPES	
FRAME LEGEND AL - ALUMINUM HM - HOLLOW METAL WF - WELDED FRAME	DOOR LEGEND SIL - 100% STEEL DOOR SCH - SOLID CORE WOOD IDENTIFICATION STAMP DIV. OF THE STATE ARCHITECT A 03117375 AC 1/2 FLS SS 8/1 DATE: JUL 27 2016
GLAZING TYPES 1 - 48% TEMPERED GRAYLITE GLAZING 2 - 14% TEMPERED GRAYLITE GLAZING 3 - CLEAR TEMPERED 4 - SINGLE PANE 5 - DUAL PANE	IDENTIFICATION STAMP DIV. OF THE STATE ARCHITECT 04 115204 ACS 22 FLS SS RAF DATE: APR 7 2016

D.S.A.
IDENTIFICATION STAMP
DIV. OF THE STATE ARCHITECT
OFFICE OF REGULATION SERVICES
04-101055
DATE: JUL 27 2016

D.S.A.
PORTION 1
IDENTIFICATION STAMP
DIV. OF THE STATE ARCHITECT
04-101055
DATE: JUL 27 2016

STRUCT. ENGINEER
JACK SHWENK
LICENSE EXP. 04-10-2022

ARCHITECT
JURORA MODULAR INDUSTRIES
18033 Kromer Ave., Riverside, CA 92504
Phone: (951) 788-7195
Fax: (951) 788-0883

CHANGE ORDER

CHECKED BY

DOOR SCHEDULE
WINDOW SCHEDULE
FINISH SCHEDULES

04
SHEET