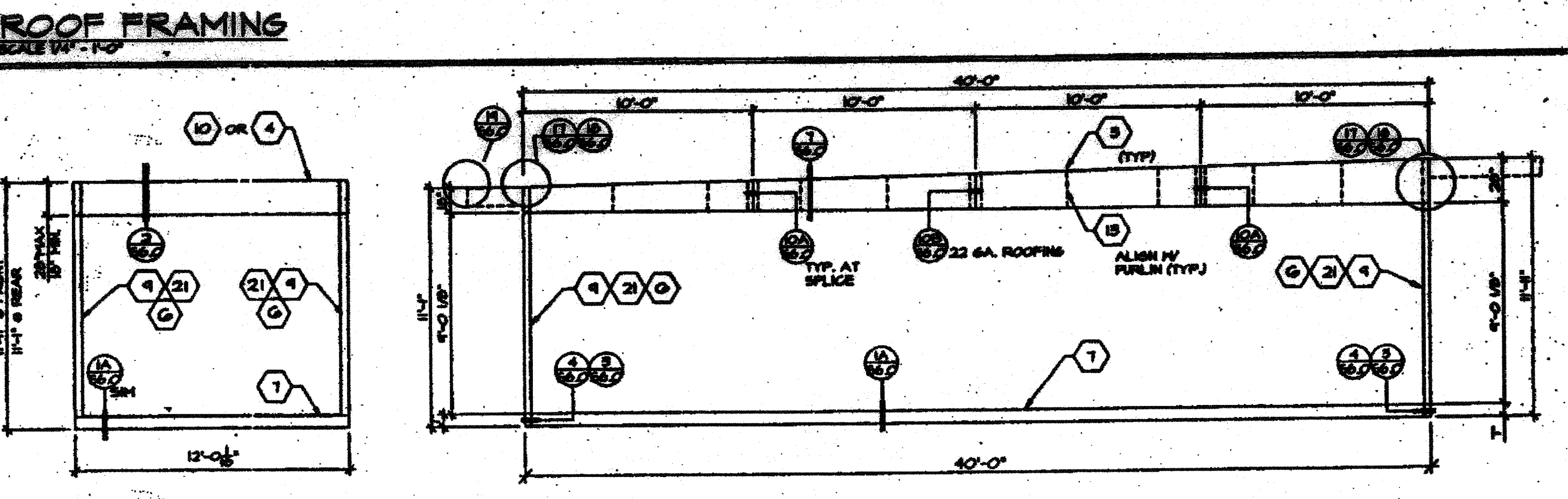
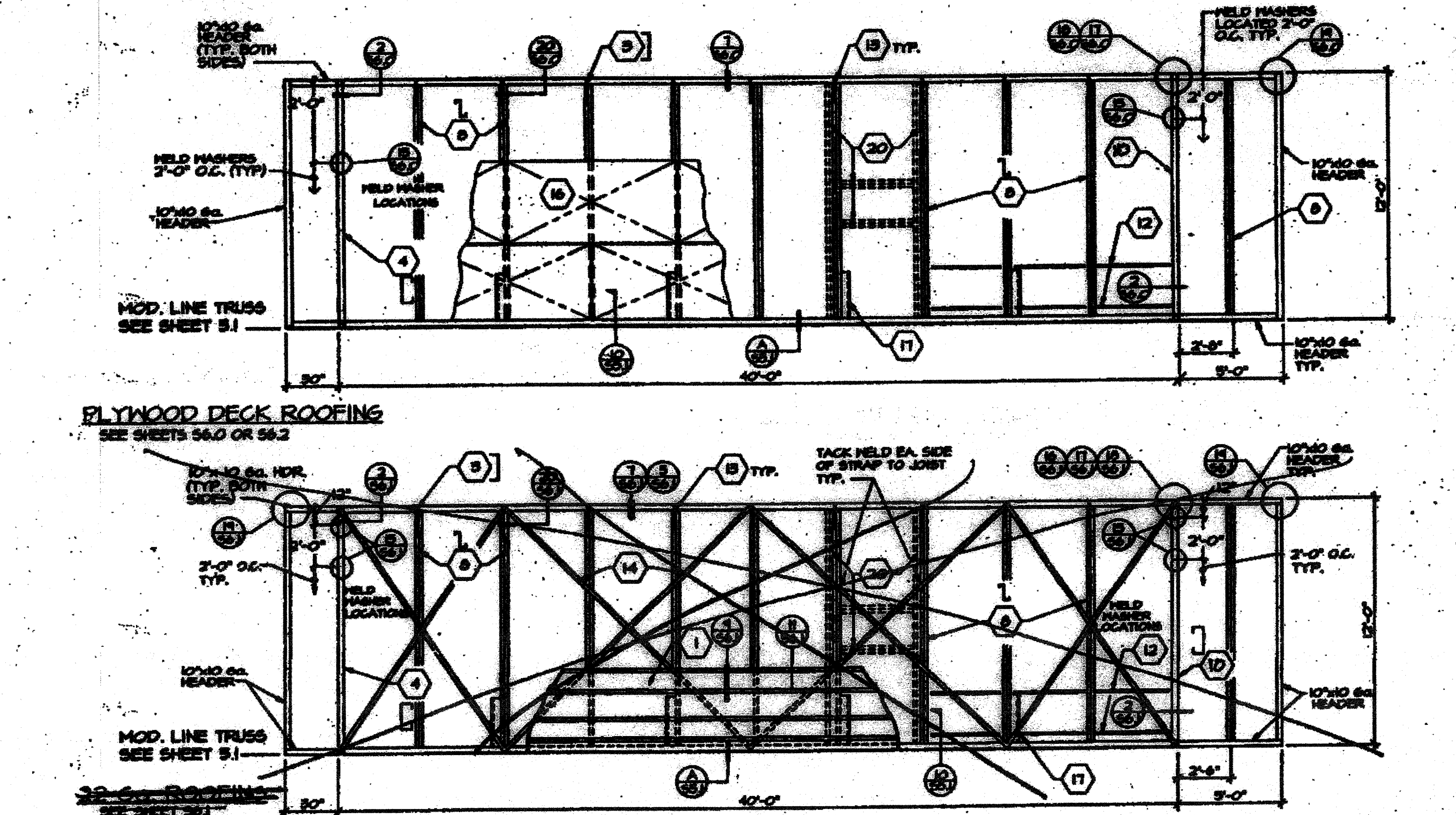


KEYNOTES

- 1 STEEL ROOF DECK - 22 GA. ROLL FORMED DECK WITH 2" STANDING SEAM. SEE NOTE 1 SH 56J FOR ATTACH.
- 2 PLYWOOD FLOOR SHEATHING - 1 1/2" A.P.A. SURE-PLY FLOOR T & S. P.S. 1-58. SEE NOTE 2 SH 56J OR 56.2 FOR ATTACH.
- 3 DIMENSION 12" x 10" O.A.
- 4 2" x 10" O.A. R.F.C. STEEL ROOF HEADER.
- 5 1 1/2" x 8" O.A. STEEL BLOCK @ 48" O.C.
- 6 STEEL COLUMN - 8" x 8" x 1/4" TUBES @ 10' O.C.
- 7 1 1/2" x 10" R.F.C. PERIMETER FLOOR FRAME.
- 8 1 1/2" x 8" O.A. STEEL ROOF JOIST @ 48" O.C.
- 9 STEEL COLUMN - 8" x 8" x 1/4" TUBES @ 8' O.C.
- 10 2" x 10" O.A. R.F.C. STEEL ROOF HEADER.
- 11 WELD HANGER FOR CEILING GRID - TYP. BOTH SIDES. SEE DETAIL 15 SH 56J OR 56J.
- 12 STRAP TACKED TO UNDERSIDE OF JOIST @ 24" O.C. FOR INSULATION SUPPORT.
- 13 8" x 8" FULL HEIGHT STIFFENER AT PURLIN LOCATIONS.
- 14 2" x 20" O.A. STRAPS W/ 2" x 1/4" R.F.C. FILLET WELD EACH END TO ROOF BEAM/HEADER TYP.
- 15 1 1/2" x 8" O.A. STEEL FLOOR JOIST @ SEE FRAMING PLAN FOR FLOOR JOIST SPACING.
- 16 PLYWOOD ROOF SHEATHING 3/4" C-D 1/4" EXT. BLUE 5024 BOARD, P.S. 1-74 SQUARE EDGE WITH PLYWOOD CLIPS @ 8" O.C. LONG EDGES.
- 17 1 1/2" x 10" R.F.C. BRACE SEE SH 56J DET. 10J.
- 18 1 1/2" x 8" O.A. STEEL FLOOR JOIST @ 16" O.C.
- 19 1 1/2" x 8" O.A. STEEL BLOCK @ 48" O.C.
- 20 DOUBLE PURLIN WITH 2" x 8" O.A. PURLIN BLOCKS @ ROOF HANGER IWAG-SEE TECHNICAL DRAWING FOR EXACT SIZE AND LOCATION.
- 21 4" x 4" x 1/4" ALT. SEE STEEL AT BUILDING WITH MARKET AND IWAG SCREEN OPTION.



CBC 1998
PC

D.S.A.
04-101065
PORTION 1
DEC 12 2017
STRUCT. ENGINEER
ARCHITECT

CHANGE ORDER
CHECKED BY

EUROPA MODULAR INDUSTRIES

MONO SLOPE
FLOOR FRAMING,
ROOF FRAMING,
STRUCTURAL
ELEVATIONS
(70 MPH 'C')

IDENTIFICATION STAMP
DIV. OF THE STATE ARCHITECT
A 03117375
AC / FLS / SS BY
Date JUL 27 2018

SHEET
S4.1