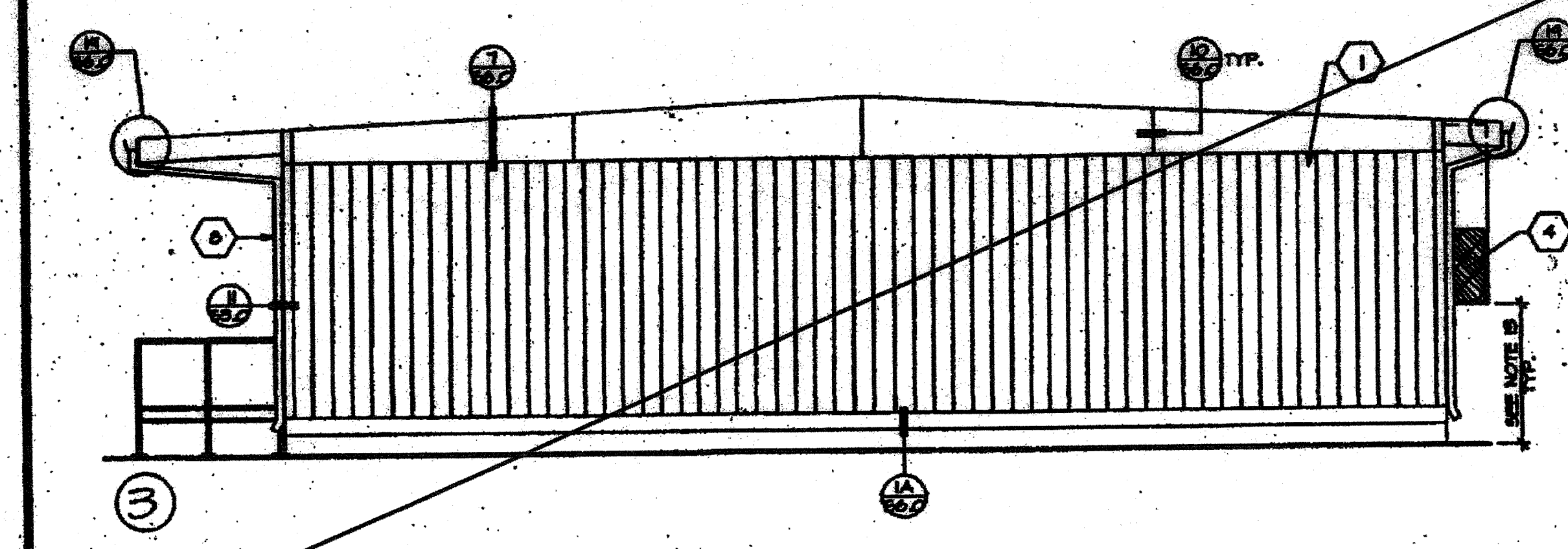
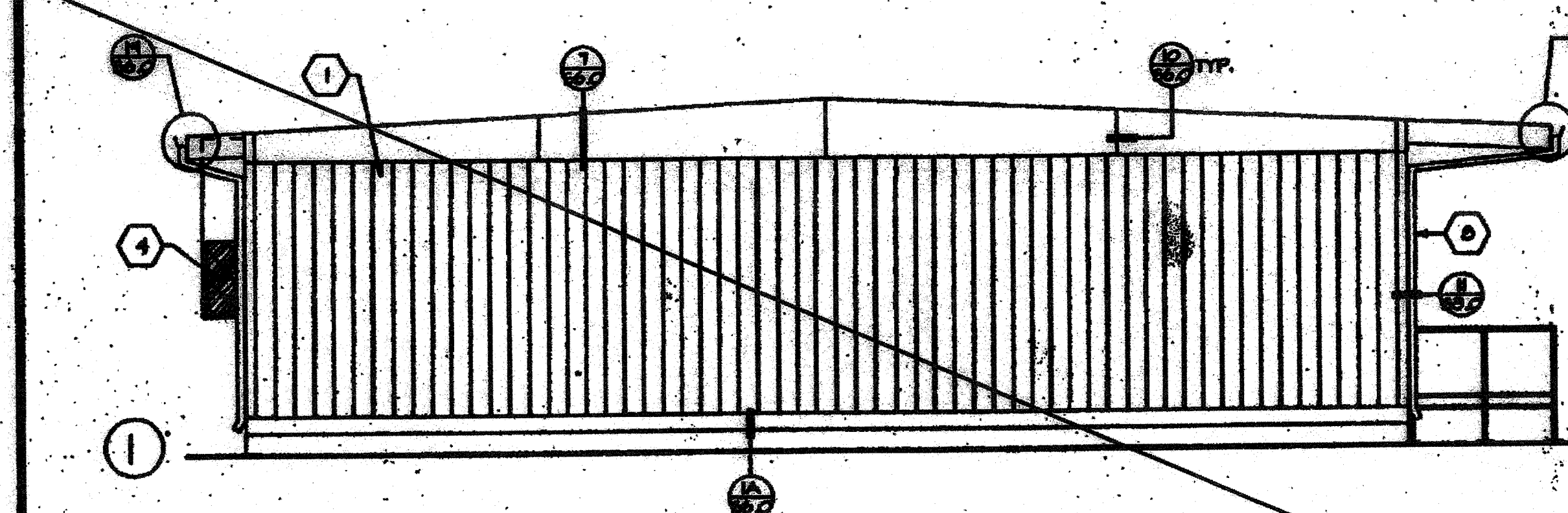
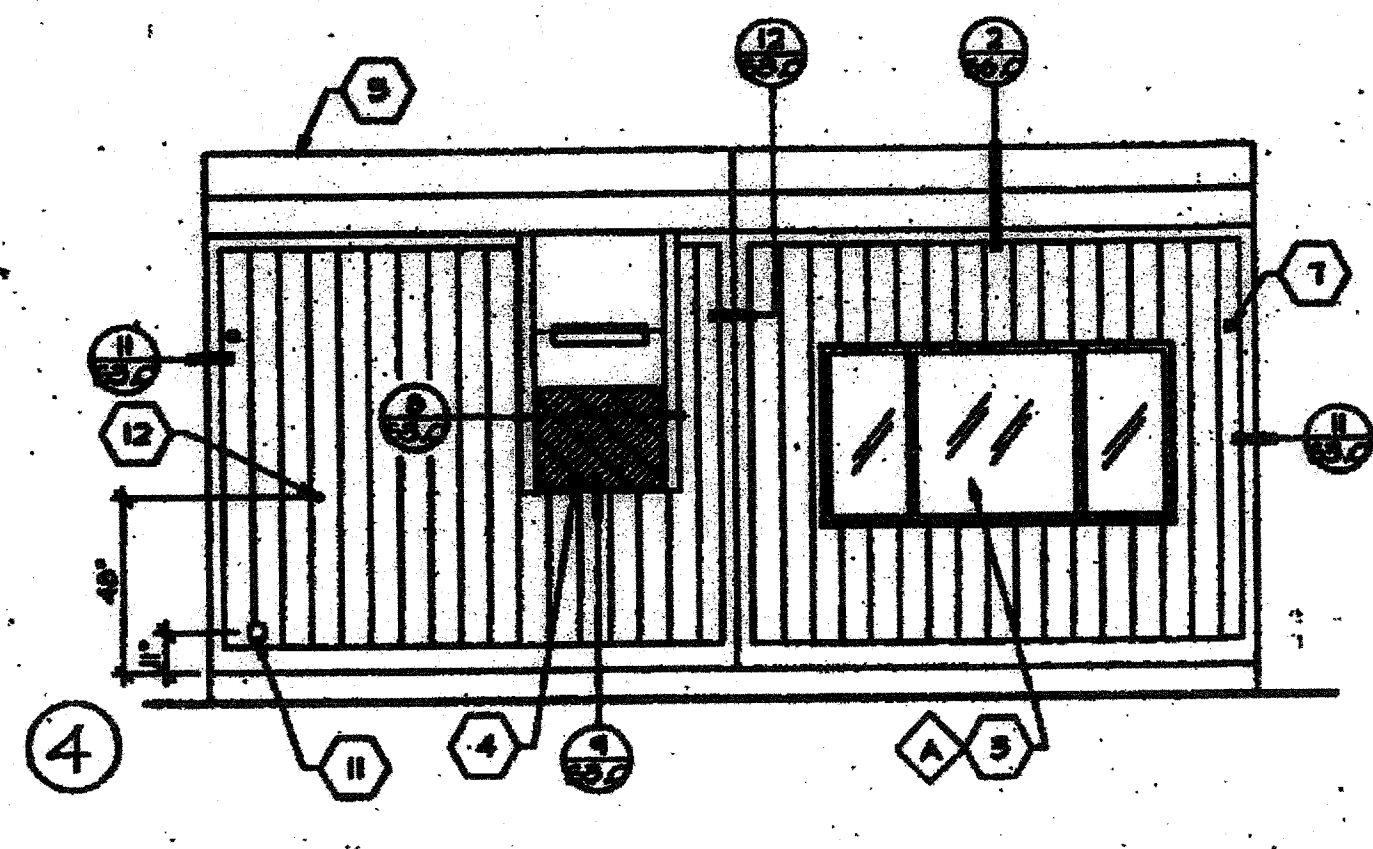
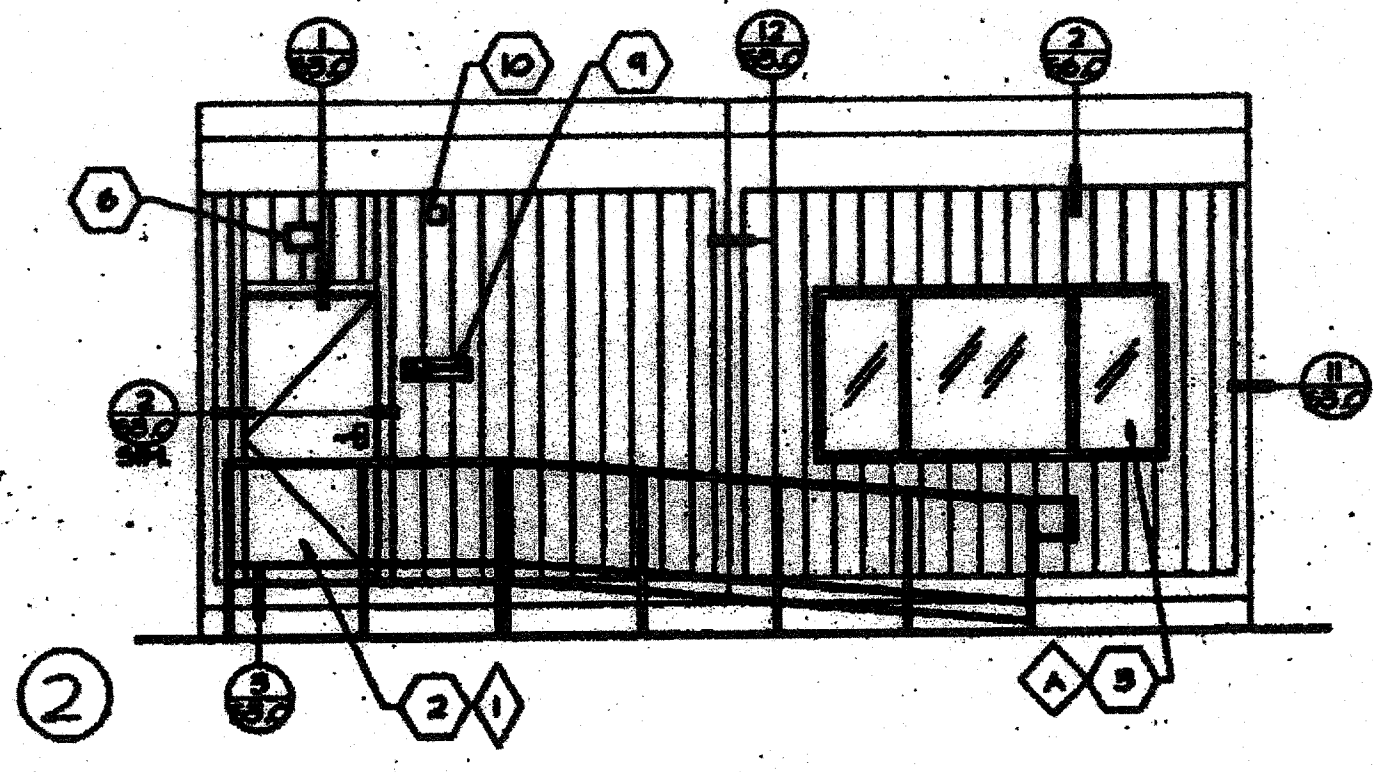
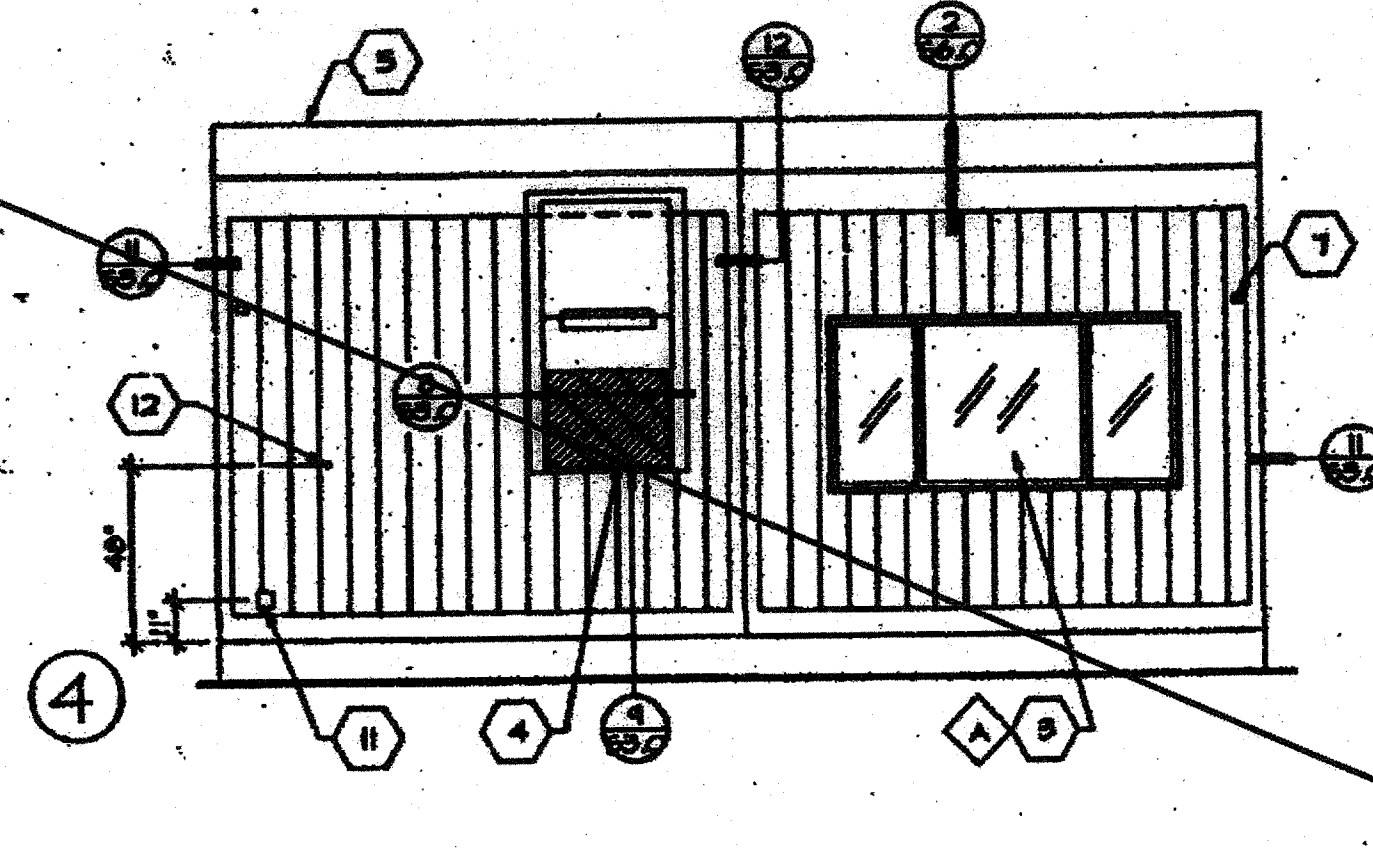
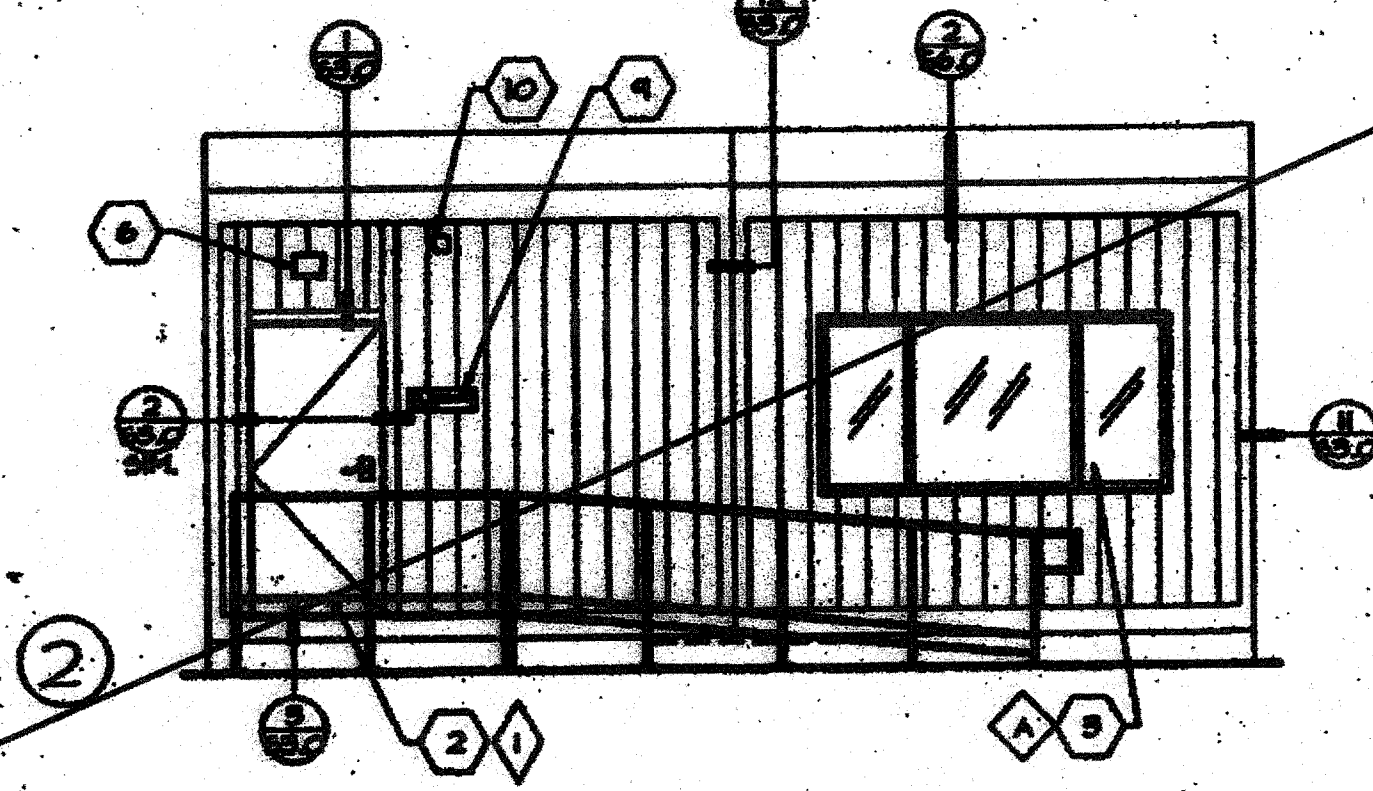


EXTERIOR ELEVATIONS (MONO SLOPE) 24x40  
SCALE: 1/4" = 1'-0"



EXTERIOR ELEVATIONS (GABLE) 24x40  
SCALE: 1/4" = 1'-0"



KEYNOTES

- 1 TYPICAL EXTERIOR FINISH- SEE SHEET 41
- 2 EXTERIOR DOOR- SEE SHEET 41
- 3 ALUMINUM SLIDER WINDOW- SEE SHEET 41
- 4 HALL MOUNTED ELECTRIC HEAT FINISH- SEE SHEET 40 OR MECHANICAL PLANS
- 5 ROOFING- SHEET 41
- 6 EXTERIOR LIGHT MOUNTED ABOVE DOOR- SEE SHEET E1.0
- 7 METAL TAG ON ALL MODELS MECHANICALLY ATTACHED TO EXTERIOR OR REAR FRAME 8 3/4" AFTER SHOWN DSA APP. 7 MANUFACTURERS NAME AND UNIT SERIAL NUMBER.
- 8 26 ga. DOWNPOUT.
- 9 ACCESS SIGN (SEE DETAIL 14 SHEET E5.0) NOT BY PORTABLE MANUFACTURER.
- 10 FIRE ALARM HORN OR BELL LOCATED 8 3/4" ON THE EXTERIOR CORNER TO BE SILENCED INTO ATTIC SPACE ONLY.
- 11 JUNCTION BOX FOR FIRE ALARM- SEE SHEET E1.0
- 12 ELECTRICAL POINT OF CONNECTION
- 13 IF HVAC UNIT IS LOCATED IN ANY PART OF TRAVEL, PROVIDE PROTECTION FROM OVERHEAD HAZARD IF DIMENSION IS GREATER THAN 27" AFS.

CBC 1998  
PC

D.S.A.  
REGISTRATION STAMP  
DIV. OF THE STATE ARCHITECT  
04-101055  
JUL 27 2016

D.S.A.  
PORTION 1  
REGISTRATION STAMP  
DIV. OF THE STATE ARCHITECT  
04-101055  
JUL 27 2016  
STRUCT. ENGINEER  
ARCHITECT

CHANGE ORDER  
CHECKED BY

14225 Providence Ave., Memphis, TN, 38119  
Phone: (901) 362-2700  
Fax: (901) 362-2585  
JURORA MODULAR INDUSTRIES

EXTERIOR ELEVATIONS (24x40)  
SHEET  
A2.0

NOTE:  
RAMPS NEEDED ACCORDINGLY TO SITE CONDITIONS. STANDARD RAMP DESIGN SHOWN FOR REFERENCE ONLY. SEE RAMP SHEETS FOR ALTERNATE RAMP DESIGN.

IDENTIFICATION STAMP  
DIV. OF THE STATE ARCHITECT  
A 03 117375  
AC by FLS / SS  
Date JUL 27 2016