

DOOR SCHEDULE									
DOOR NO.	DOOR SIZES	TYPE	DOOR TYPE	GLASS	ENERGY RATING	FRAME TYPE	FINISH	DOOR SPECIFICATION	
1	3'-0" x 6'-0" x 1 3/4"	A	STL			A	1	10 GA. FULL FLUSH	
2	3'-0" x 6'-0" x 1 3/4"	A	STL			A	2	10 GA. FULL FLUSH	

DOOR HARDWARE GROUP #1				DOOR HARDWARE GROUP #2			
ITEM	DESCRIPTION	ITEM	DESCRIPTION	ITEM	DESCRIPTION	ITEM	DESCRIPTION
LOCK SET	LEVER HANDLE, SCHLAGE D10FD RHODES, 260 FINISH	PANIC	VON DUPRE 2250, 260 FINISH	HINGES	WABAR RG 12M BB 4.5" x 4.5" NRP PC	HINGES	WABAR RG 12M BB 4.5" x 4.5" NRP PC
HINGES	WABAR RG 12M BB 4.5" x 4.5" NRP PC	CLOSER	NORTON 160L, 8 LBS. CLOSING PRESSURE	CLOSER	NORTON 160L, 8 LBS. CLOSING PRESSURE	THRESHOLD	YB407 271A
CLOSER	NORTON 160L, 8 LBS. CLOSING PRESSURE	THRESHOLD	YB407 271A	KICKPLATES	YB407 284V	DOOR BOTTOM	YB407 284V
THRESHOLD	YB407 271A	WEATHER-STRIP	YB407 294AV	WEATHER-STRIP	YB407 294AV	DOOR STOP	QUALITY 1201 ES
KICKPLATES	YB407 284V	DOOR STOP	QUALITY 1201 ES				

DOOR HARDWARE GROUP #3				DOOR HARDWARE GROUP #4			
ITEM	DESCRIPTION	ITEM	DESCRIPTION	ITEM	DESCRIPTION	ITEM	DESCRIPTION
LOCK SET	LEVER HANDLE, SCHLAGE D10FD RHODES, 260 FINISH	LOCK SET	LEVER HANDLE, SCHLAGE D10FD RHODES, 260 FINISH	HINGES	WABAR RG 12M BB 4" x 4"	HINGES	WABAR RG 12M BB 4" x 4"
HINGES	WABAR RG 12M BB 4" x 4"	DOOR STOP	QUALITY 1201 ES	DOOR STOP	QUALITY 1201 ES		

DOOR HARDWARE GROUP #5				DOOR HARDWARE GROUP #6			
ITEM	DESCRIPTION	ITEM	DESCRIPTION	ITEM	DESCRIPTION	ITEM	DESCRIPTION
LOCK SET	LEVER HANDLE, SCHLAGE D10FD RHODES, 260 FINISH	LOCK SET	LEVER HANDLE, SCHLAGE D10FD RHODES, 260 FINISH	HINGES	WABAR RG 12M BB 4" x 4"	HINGES	WABAR RG 12M BB 4" x 4"
HINGES	WABAR RG 12M BB 4" x 4"	DOOR STOP	QUALITY 1201 ES	DOOR STOP	QUALITY 1201 ES		

WINDOW SCHEDULE			
WINDOW SIZES	FRAME	GLAZING TYPE	SPECIAL NOTES
8'-0" x 4'-0"	AL	1 & 5	ALUMINUM FRAMED SCREENS ON OPERABLE SASH.

EXTERIOR FINISH			
MATL.	DESC.	MFG.	SPECIFICATION
SIDING	4" x 4" x 5/8"	DURATEMP	APA RATED OR EQUAL, GROUP I, TYPE 309 EXTERIOR SIDING
ROOFING	BUILT-UP	GAFGLAS	N-9-B-N (SEE SPEC. ON SHEET 4)
	26 GA.	FLACER	
	22 GA.	CAL. STEEL	
TRIM	WOOD 1"x4"	RESAWN	DOORS

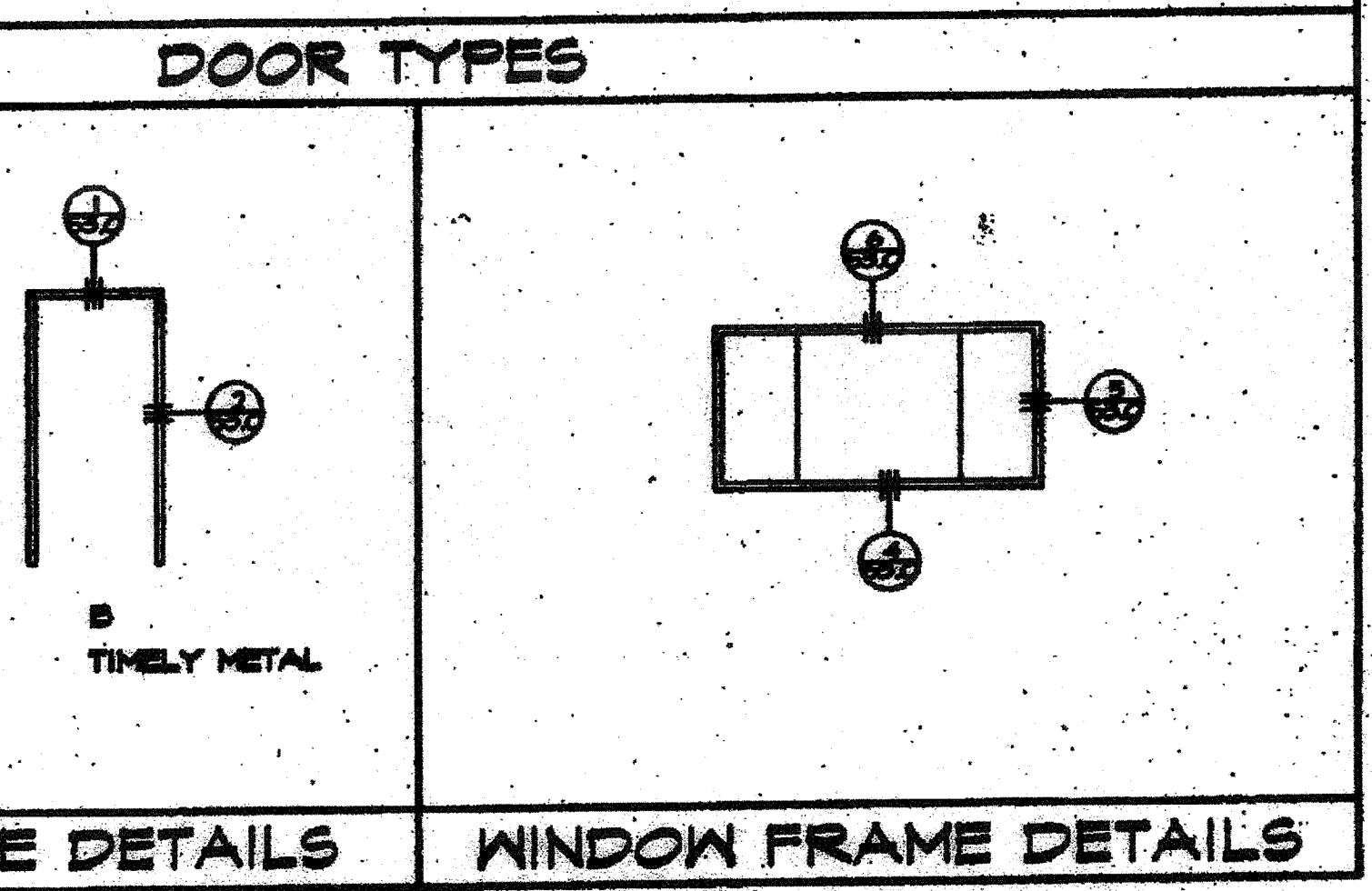
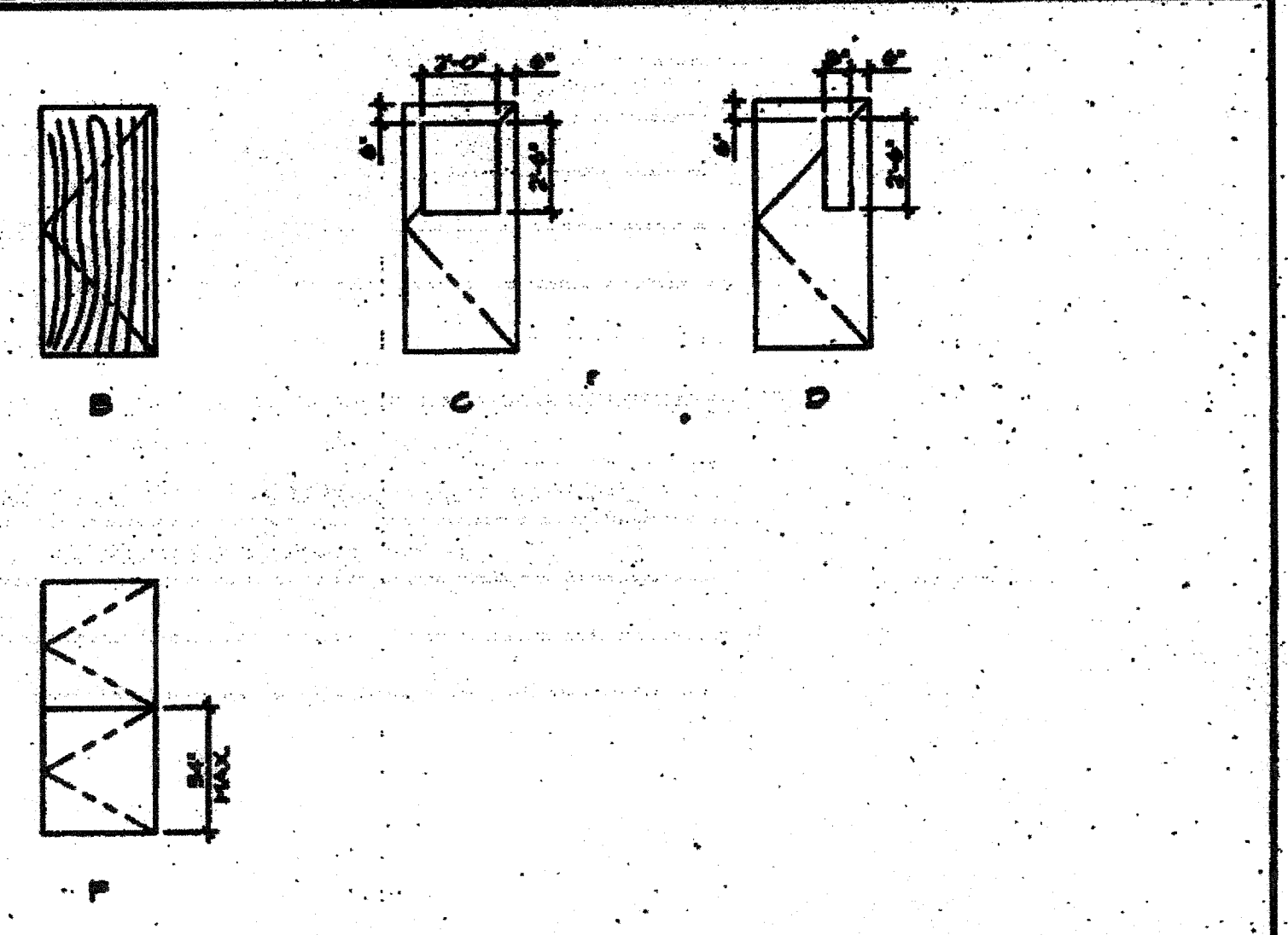
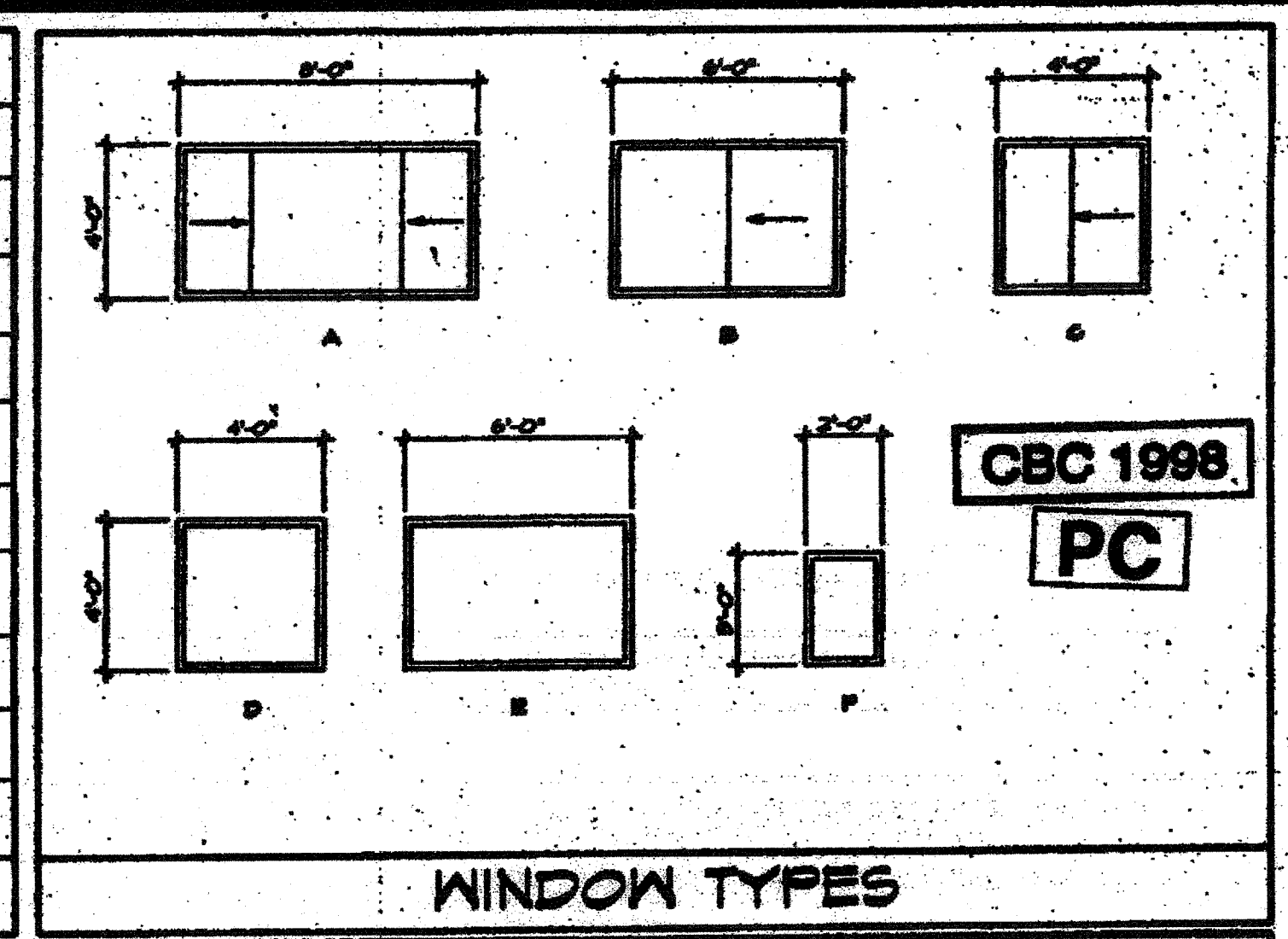
INTERIOR FINISH SPECIFICATIONS	
ITEM	DESCRIPTION
CARPET	COMPLYING WITH THE STATE OF CALIF. SPEC. 1220-2K-01 GROUP I TYPE A, CLASS 24, DENSITY 1600, DIRECT GLUE DOWN. (SEE NOTE BELOW)
SHEET VINYL	ARMSTRONG CLASSIC CORLON SHEET VINYL, 6MM GAUGE WITH 9" COVE BASE, COEFFICIENT OF FRICTION 0.3 MIN. (ASTM D2047)
VCT	VINYL COMPOSITION TILE WITH 4" TOP SET BASE, COEFFICIENT OF FRICTION 0.3 MIN. (ASTM D2047)
SUSPENDED	ARMSTRONG T44 CEILING TILE (PLANE SPREAD CLASS II) WITH ARMSTRONG HEAVY DUTY GRID, MAIN RUNNERS 1501, CROSS RUNNERS-XL 1520 OR XL 5223
GYP. BOARD	1/2" HP. GYP BOARD TAPED AND PAINTED
VINYL	1/2" VINYL COVERED TACK BOARD (PLANE SPREAD CLASS II) OVER 1/2" GYP BOARD.
F. R. P.	1/2" FULL HEIGHT FIBERGLASS REINFORCED PANELS (FRP) OVER 1/2" WATERPROOF GYP BOARD PANELS.
CHALKBOARD	1/2" PARTICLE BOARD SUBSTRATE, FULL HEIGHT HAF RAIL WITH CORK INSERT AND 5/8" HAF HOOKS, EXTRUDED ALUMINUM HOLDING WITH PLUG HOLDER.
MARKERBOARD	1/2" PARTICLE BOARD SUBSTRATE, FULL HEIGHT HAF RAIL WITH CORK INSERT AND 5/8" HAF HOOKS, EXTRUDED ALUMINUM HOLDING WITH PLUG HOLDER.

INTERIOR FINISH SCHEDULE				
ROOM DESC. ROOM NO.	FLOOR	CEILING	WALLS	MISC.
CLASSROOM	CARPET	SUSPENDED	VINYL	

INTERIOR FINISH SCHEDULE				
ROOM DESC. ROOM NO.	FLOOR	CEILING	WALLS	MISC.
CLASSROOM	CARPET	SUSPENDED	VINYL	

INTERIOR FINISH SCHEDULE				
ROOM DESC. ROOM NO.	FLOOR	CEILING	WALLS	MISC.
RESTROOM	SHEET VINYL	SUSPENDED FR	FRP	MARKERBOARD (PORCELIN)

A/C INFORMATION					
MANUFACT.	MAR/VAIR	MODEL	AVR/PROP/A	MANUFACT.	MAR/VAIR
SIZE	5.5 TON (1 UNIT)	SIZE	5 TON (1 UNIT)	SIZE	5.5 TON (2 UNITS)
SUPPLY	DUCTED	SUPPLY	DUCTED	SUPPLY	DUCTED
RETURN	DIRECT	RETURN	DIRECT	RETURN	DIRECT
HEAT STRIP	SEE SHT. E1.0	HEAT STRIP	SEE SHT. E1.1	HEAT STRIP	SEE SHT. E1.2
ELECTRICAL	SEE SHT. E1.0	ELECTRICAL	SEE SHT. E1.1	ELECTRICAL	SEE SHT. E1.2
24 X 40 CLASSROOM		56 X 40 CLASSROOM		48 X 40 CLASSROOM	



FRAME, DOOR & GLAZING TYPES	
FRAME LEGEND	DOOR LEGEND
AL - ALUMINUM	STL - 10GA STEEL DOOR
HM - HOLLOW METAL	SCM - SOLID CORE DOOR
FP - FIBERGLASS	
GLAZING TYPES	
1 - 48% TINTED GRAYLITE GLAZING	
2 - 48% TINTED GRAYLITE GLAZING	
3 - CLEAR TINTED	
4 - SINGLE PANE	
5 - DUAL PANE	

D.S.A. IDENTIFICATION STAMP DIV. OF THE STATE ARCHITECT

04-101050

PORTION 1

06678

STRUCT. ENGINEER

ARCHITECT

CHANGE ORDER

CHECKED BY

TURORA MODULAR INDUSTRIES

DOOR SCHEDULE

WINDOW SCHEDULE

FINISH SCHEDULES

IDENTIFICATION STAMP

DIV. OF THE STATE ARCHITECT

A 031-17375

AC W/ FLS SS 87

Date JUL 27 2016