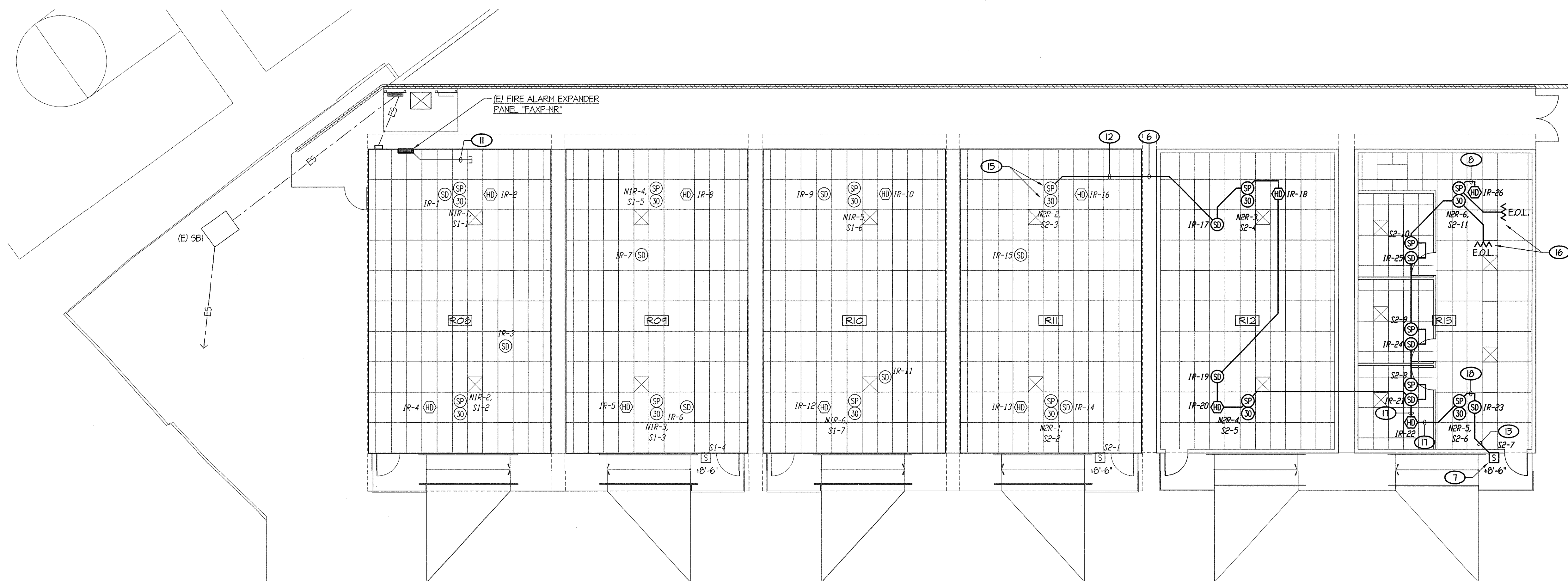


E POWER AND SIGNALS PLAN

SCALE: 1/8" = 1'-0"



E FIRE ALARM PLAN

SCALE: 1/8" = 1'-0"

NOTES (THIS SHEET ONLY):

- 1 CONNECT PANEL PROVIDED WITH RELOCATABLE BUILDING.
- 2 FOUR EXISTING SPARE 1 1/2" STUB OUTS TO REMAIN. NO WORK REQUIRED.
- 3 EXISTING CONDUITS ARE SURFACE MOUNTED ON WALL ON BACK OF RELOCATABLE BUILDING.
- 4 FEEDER PER ONE LINE DIAGRAM #1E41.
- 5 PICK UP TWO EXISTING SPARE 1 1/2" CONDUITS AT THIS LOCATION AND EXTEND DOWN WALL TO CONNECT NEW PANEL AS SHOWN. OTHER SPARE CONDUITS ARE TO REMAIN.
- 6 SEE DETAIL #3/E41 FOR CONDUIT CONNECTIONS REQUIREMENTS BETWEEN BUILDINGS, TYPICAL.
- 7 USE JUNCTION BOX SUPPLIED WITH RELOCATABLE BUILDING FOR MOUNTING OF EXTERIOR SPEAKER.
- 8 3/4" - ONE "FA" CABLE.
- 9 TWO EXISTING SPARE 1" (F.A.), FOUR 1 1/4" AND ONE 2" FOR OWNER'S USE.
- 10 PROVIDE ONE 3/4", ONE 1", ONE 1 1/4" AND ONE 2" BETWEEN BUILDINGS FOR USE BY THE OWNER. INSTALL IN ACCESSIBLE ATTIC SPACE.
- 11 TWO EXISTING SPARE 1" TO REMAIN.
- 12 1" - ONE "FA" CABLE, ONE "FS" CABLE, 2 #12. TYPICAL, U.O.N.
- 13 3/4" - TWO "FS" CABLES.
- 14 EXISTING SPARE CONDUIT STUBS TO REMAIN. NO WORK REQUIRED.
- 15 AT THIS DEVICE PICK UP AND EXTEND THE EXISTING SLG, NOTIFICATION APPLIANCE CIRCUITS AND SPEAKER CIRCUITS AND EXTEND AS SHOWN. MOVE END OF LINE RESISTORS. SEE KEYNOTE #16.
- 16 MOVE E.O.L. RESISTORS FOR NOTIFICATION APPLIANCE CIRCUITS AND SPEAKER CIRCUITS TO THIS DEVICE LOCATION.
- 17 1 1/4" - ONE "FA" CABLE, TWO "FS" CABLES, 4 #12.
- 18 1" - ONE "FA" CABLE, TWO "FS" CABLES.
- 19 EXISTING ONE 3/4", ONE 1", ONE 1 1/4" AND TWO 2" BETWEEN BUILDINGS FOR USE BY THE OWNER TO REMAIN.

MARK	DATE	REVISIONS
△		
△		
△		

CHECK AND VERIFY ALL DIMENSIONS BEFORE PROCEEDING WITH THE WORK. REPORT DISCREPANCIES TO THE ARCHITECT. ALL CONSTRUCTION SHALL CONFORM TO THE C.B.C.

SITE IMPROVEMENTS FOR (2) MODULAR CLASSROOMS AT:

HORACE MANN ELEMENTARY SCHOOL
 2770 NILES STREET, BAKERSFIELD, CA, 93306
FOR
BAKERSFIELD CITY SCHOOL DISTRICT
 BAKERSFIELD, KERN COUNTY, CALIFORNIA, 93305

IDENTIFICATION STAMP
 DIV. OF THE STATE ARCHITECT
 OFFICE OF REGULATION SERVICES
 APPL. 03-117319
 FILE: 15-6
 AC: [initials] FLS: [initials] SS: [initials] BY: [initials]
 DATE: JUL 27 2016
 PTN: 63321-223

ARCHITECT
SCARCHITECT INC.
 1601 NEW STINE ROAD, SUITE 280
 BAKERSFIELD, CA 93309
 PH: (661) 397-4377
 FAX: (661) 397-4378
 WWW.SCARCHITECT.COM

REGISTERED ARCHITECT
 No. C-16788
 Exp. 12/31/17
 STATE OF CALIFORNIA
 STEPHEN J. CORBIN, N.C.A.R. No. 12259 AP BD+C

REGISTERED PROFESSIONAL ENGINEER
 No. 65917
 Exp. 6/30/17
 STATE OF CALIFORNIA
 Rose Sing and Associates, Inc.
 Electrical Consultants
 131 S. Dunsmuir - (559) 733-2671
 Visalia, California 93292-6705

POWER AND SIGNALS PLAN AND FIRE ALARM PLAN

AUTOMATIC FIRE SPRINKLER SYSTEM
 BUILDING _____ HAS AN AUTOMATIC FIRE SPRINKLER SYSTEM. HEAT DETECTORS HAVE BEEN OMITTED IN CONCEALED ATTIC SPACES ABOVE CEILING AND SOFFITS DUE TO THE AUTOMATIC FIRE SPRINKLER SYSTEM IS FULLY EQUIPPED IN THESE AREAS. C.F.C. 901.2.3.6.1.

COMPLETE AUTOMATIC FIRE ALARM SYSTEM PLAN SUBMITTAL
 THE FIRE ALARM SYSTEM SHOWN ON THESE PLANS HAS BEEN SUBMITTED AND APPROVED BY THE DIVISION OF THE STATE ARCHITECT. ANY SUBSTITUTION OF THE FIRE ALARM SYSTEM SHALL BE RESUBMITTED TO THE ARCHITECT FOR REVIEW AND APPROVAL. THE CONTRACTOR SHALL PAY ANY ADDITIONAL FEES THAT ARE INCURRED DUE TO THIS SUBSTITUTION.

THE FIRE ALARM SYSTEM SHALL BE A TOTAL (COMPLETE) AUTOMATIC HEAT AND SMOKE DETECTION SYSTEM, PER C.F.C. SECTION 901.2.3.5, AND SHALL COVER EVERY ROOM AND/OR AREA. UPON THE ACTIVATION OF ANY INITIATION DEVICE THE FIRE ALARM SYSTEM SHALL ALERT ALL OCCUPANTS AND TRANSMIT THE ALARM, SUPERVISORY, AND TROUBLE SIGNALS TO AN APPROVED SUPERVISING STATION (C.F.C. SECTION 901.2.3.5).

JOB NO.
1225
 DRAWN:
 TW
 CHECKED:
 DS
 DATE:
 05-25-16

2.2
 OF SHEETS

A:\Drawing\Jobs\CA\CA\000003\FIELD\Bakersfield_City_School\Horace Mann - Two Modular Classroom - Power and Signals Plan - 15-0968-01-1.dwg
 Date: 06/02/16 09:02:15
 User: jcorbin
 Plot Date: 06/02/16 09:02:15
 Plotter: HP DesignJet 5000 Series
 Scale: 1/8" = 1'-0"
 Sheet: 2 of 2