

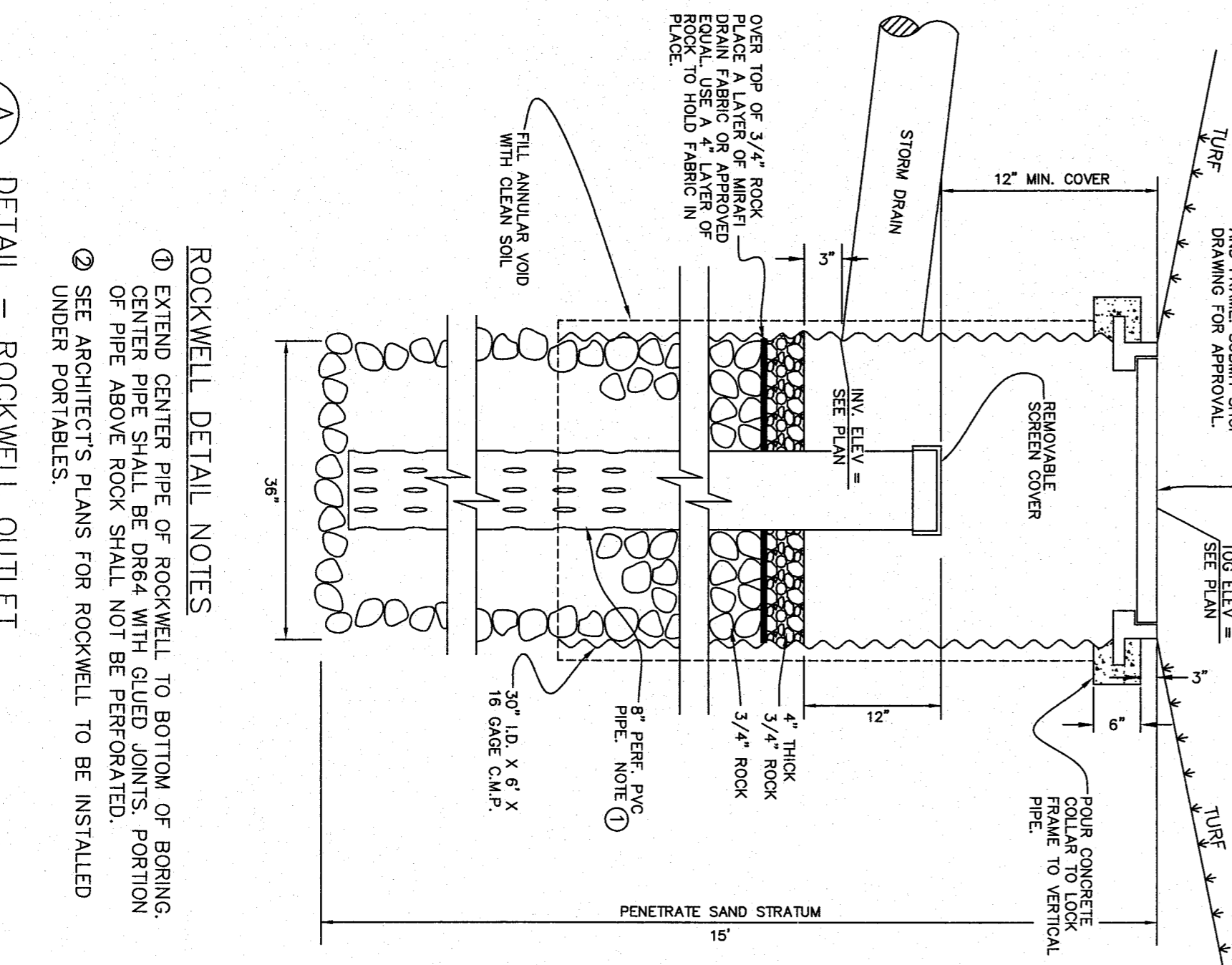
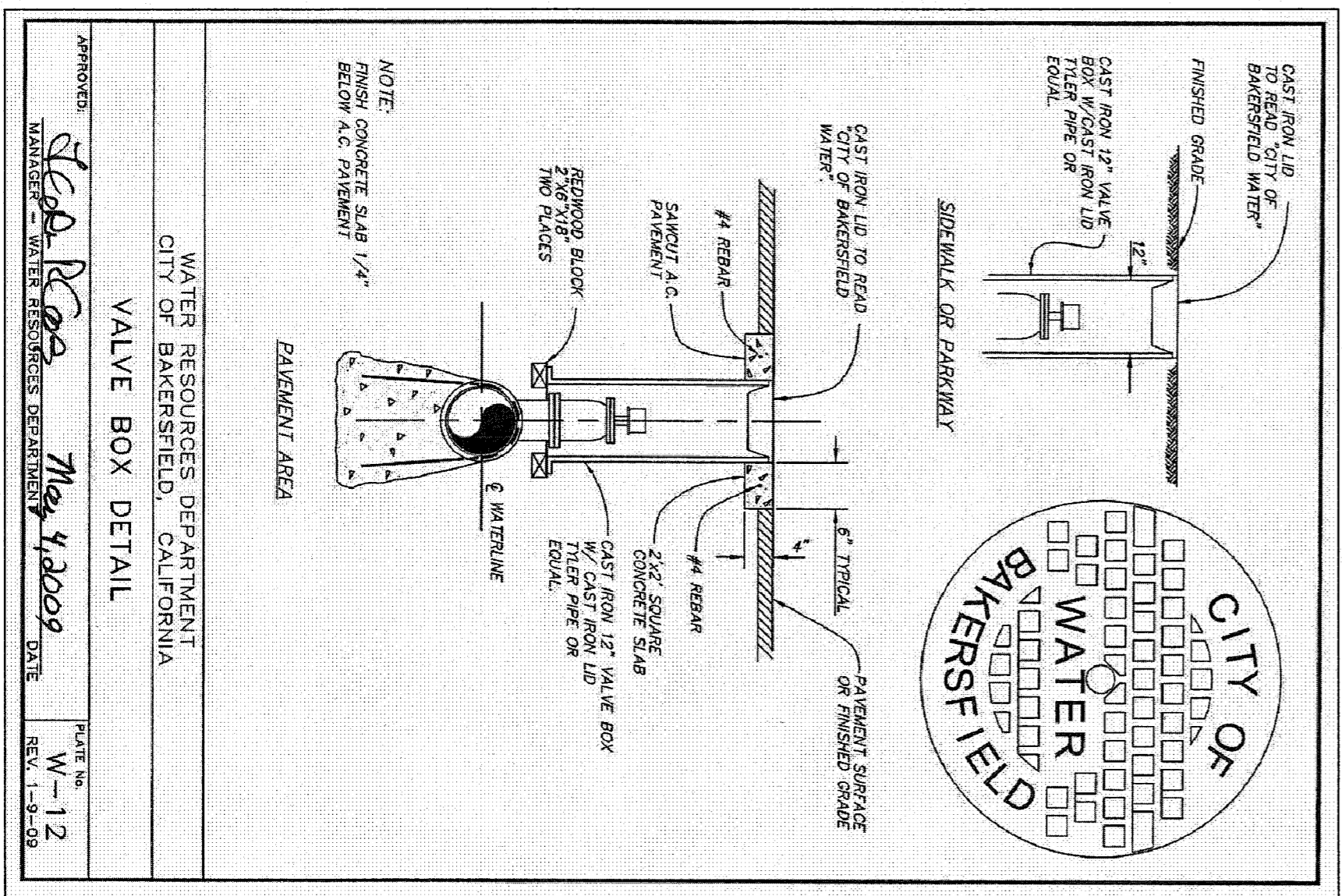
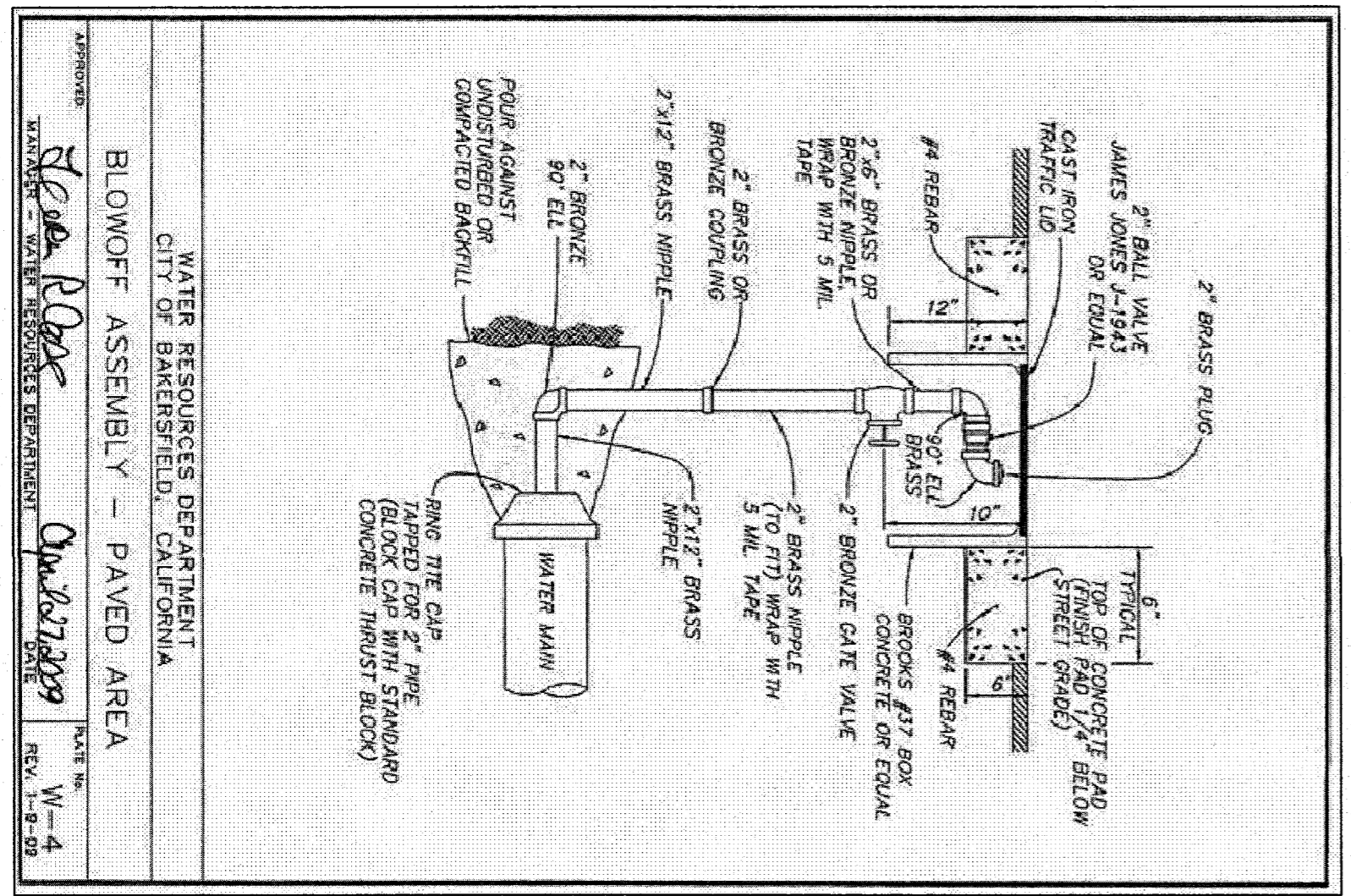
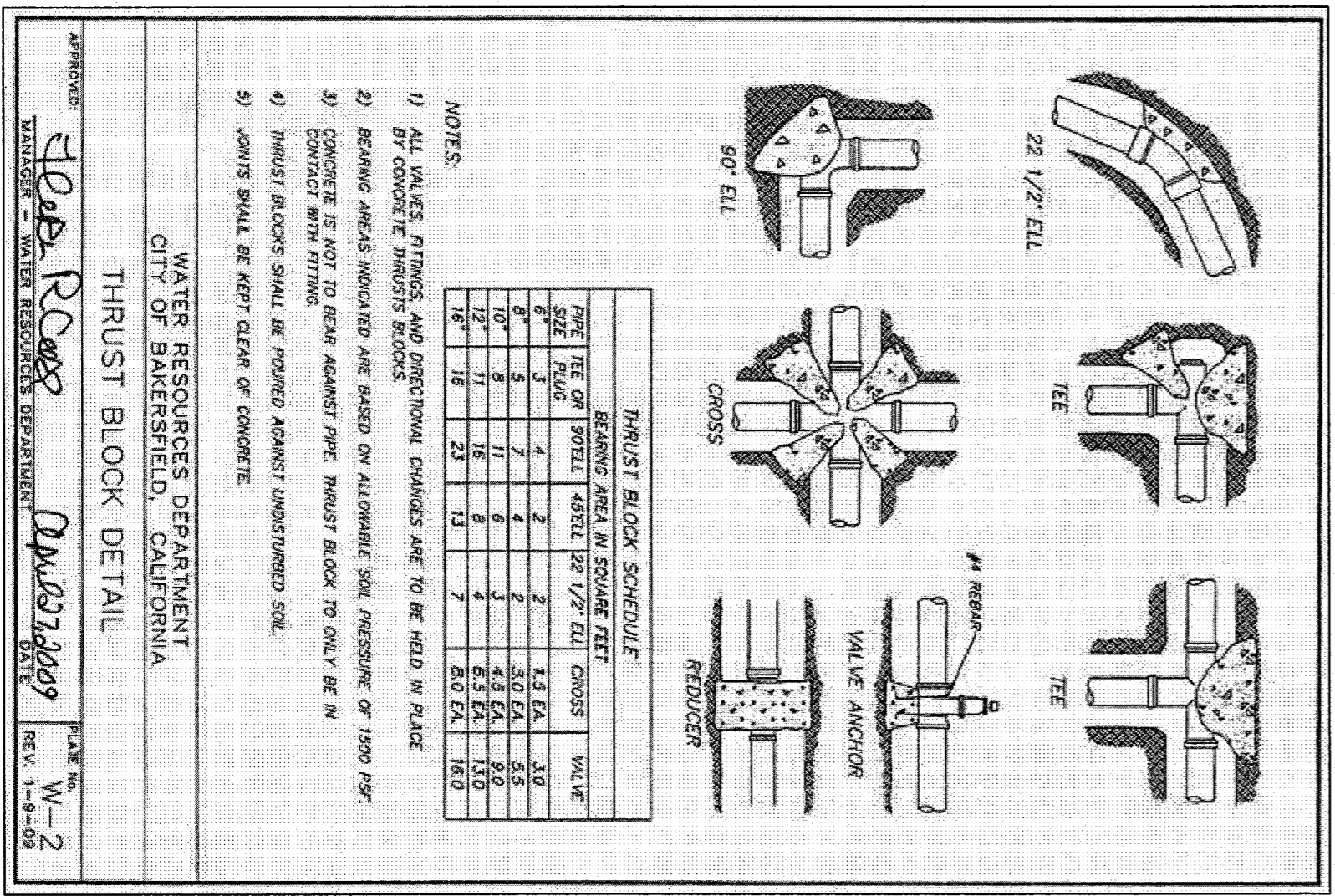
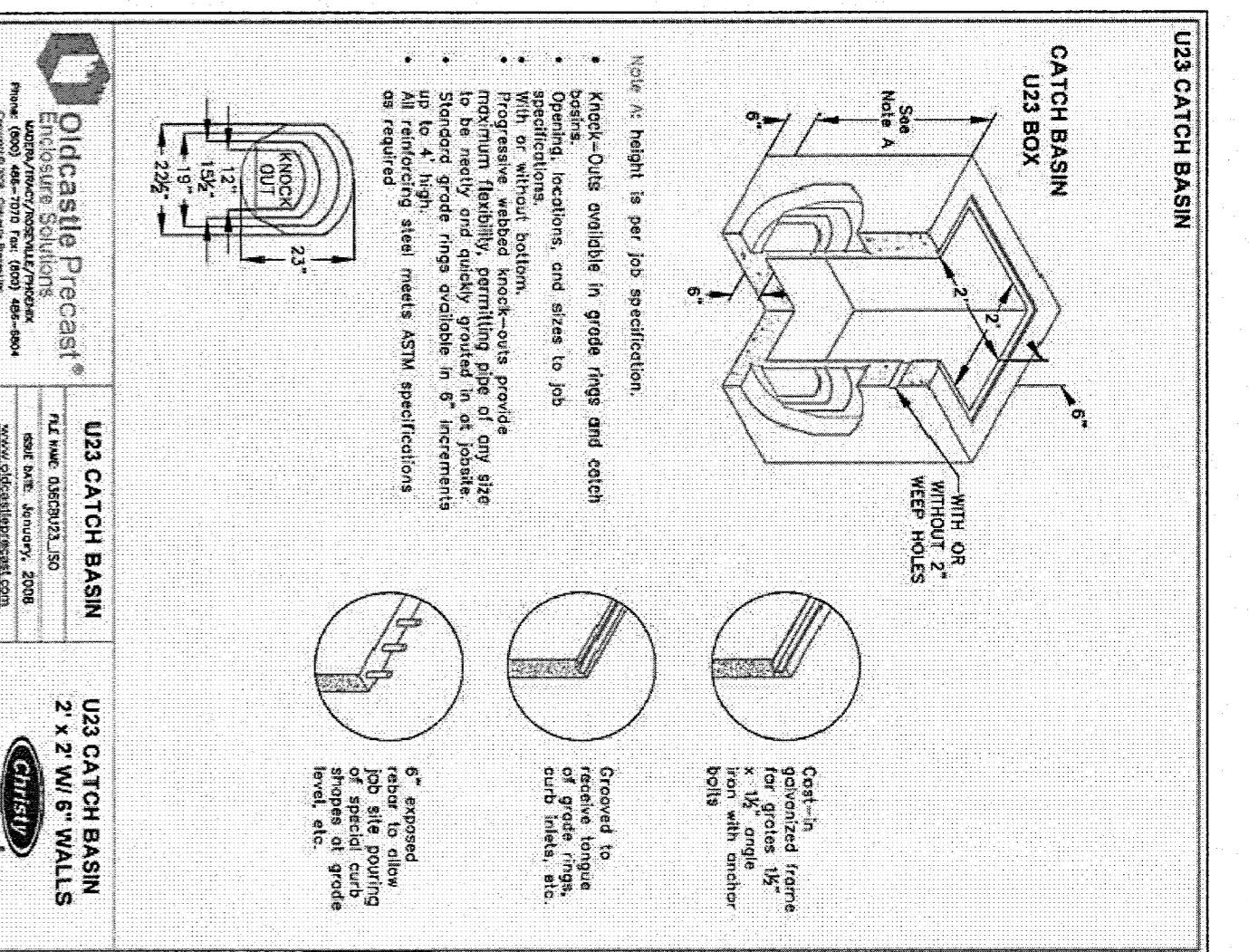
Welded Steel Grates with Cross Bars
770 Open Flow Area

Light Duty

H20 Traffic Loading

Opening	Area	Description
U21-H1	35	24\"/>
U21-H1	75	24\"/>
U23-H1	112	24\"/>
U23-H1	153	24\"/>
U23-H1	232	30\"/>
U23-H1	280	36\"/>

Oldcastle Precast
STEEL GRATES
WELDED STEEL GRATES



REGISTERED PROFESSIONAL ENGINEER
MATTHEW K. VOVILLA
RCE 43130
Exp. 3-31-12
CIVIL
STATE OF CALIFORNIA

Pinnacle Civil Engineering, Inc.
4620 California Avenue, Bakersfield, CA 93309
Phone: (661) 869-0184 Fax: (661) 377-0076

MATTHEW K. VOVILLA	RCE 43130 EXP. 3/31/12
REVISIONS	DATE
CHANGE ORDER ONE	

STANDARD PLAN DETAILS
FREMONT ELEMENTARY
607 TEXAS STREET
BAKERSFIELD, CALIFORNIA

AS BUILT

JOB NO.: 08-389
DATE: 3/17/2010
DRAWN BY: ADM
CHECKED BY: MMY

SHEET 4 OF 9 SHEETS