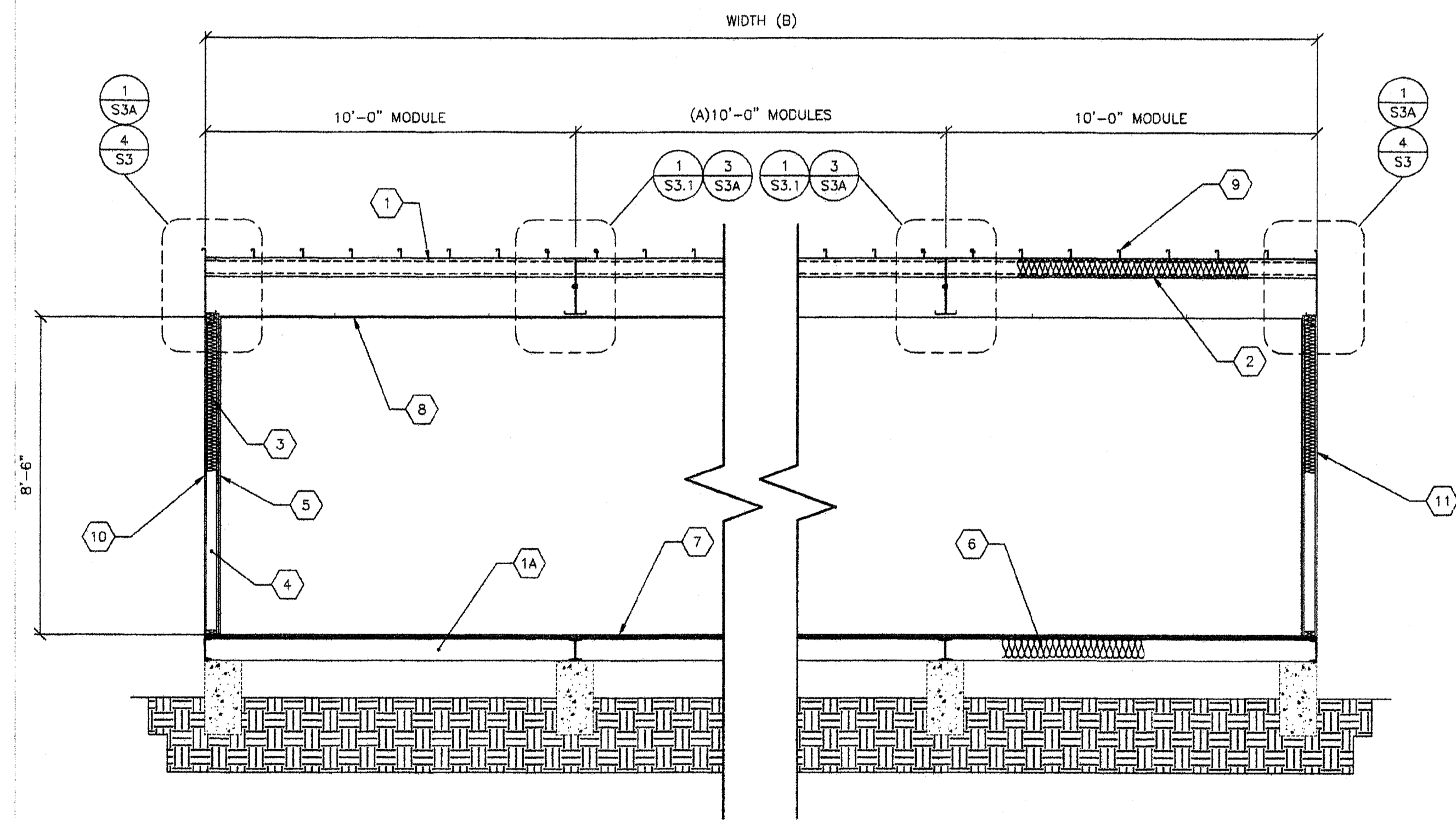


**A TYP. LONGITUDINAL SECTION**  
S7 3/8"=1'-0"



**B TYP. TRANSVERSE SECTION**  
S7 3/8"=1'-0"

- KEY NOTES -**
- 1 "Z" PURLINS @ 48" O.C
  - 1A STEEL "Z" FLOOR JOISTS
  - 2 R-19 INSULATION w/22 GA WIRE @ 16" O.C
  - 3 INSULATION w/KRAFT PAPER
  - 4 2x STUDS PER ELEV. S5
  - 5 VINYL FABRIC ON RIGID TACKABLE BACKING
  - 6 INSULATION w/KRAFT PAPER AND CHICKEN WIRE
  - 7 1 1/8" PLYWOOD FLOOR SHEATHING FOR ALL SEE SHEET S2A, S2B OR S2C
  - 8 SUSPENDED T-BAR CEILING
  - 9 METAL ROOF PANELS SEE ROOF FRAMING PLAN
  - 10 EXTERIOR FINISH PER ARCHITECTURAL SCHEDULE
  - 11 EXTERIOR WALL FINISH PER EXTERIOR ELEVATIONS TYP.

**- MODULE SCHEDULE -**

BLDG SIZE (FT)	TOTAL # OF 12' WIDE MODULES	"A" TOTAL # OF CENTER MODULES	"B" TOTAL BLDG WIDTH
30' x 32'	3	1	30'-1/2"
40' x 32'	4	2	40'-3/4"
50' x 32'	5	3	50'-1"
60' x 32'	6	4	60'-1 1/4"
70' x 32'	7	5	70'-1 1/2"
80' x 32'	8	6	80'-1 3/4"
90' x 32'	9	7	90'-2"
100' x 32'	10	8	100'-2 1/4"
110' x 32'	11	9	110'-2 1/2"
120' x 32'	12	10	120'-2 3/4"

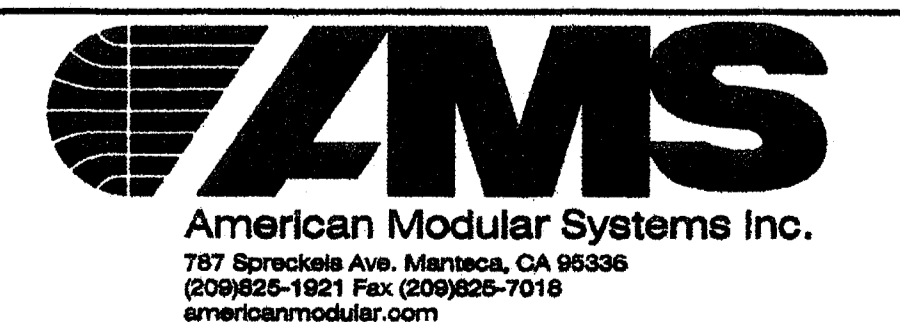
IDENTIFICATION STAMP  
DW. OF THE STATE ARCHITECT  
05 112884  
AC. FLS. SS. SS.  
DATE 8-13-08

**REVISIONS**

NO	DATE	DESCRIPTION

DATE: 02/12/08  
SCALE: NOTED  
DRAWN BY: DM  
SERIAL NO.:

CUSTOMER:  
2 1/2:12 PITCHED ROOF 30' x 32' THRU 120' x 32' RELOCATABLE BUILDINGS  
TYPICAL LONGITUDINAL AND TRANSVERSE FRAME ELEVATION



APPROVALS:  
THESE DRAWINGS ARE PRELIMINARY AND NOT FOR CONSTRUCTION UNLESS STAMPED & SIGNED BY THE ENGINEER OF RECORD.  
Kenneth A. Luttrell  
No. 1418  
Exp. 3-31-11  
Structural Engineer  
STATE OF CALIFORNIA

IDENTIFICATION STAMP  
DW. OF THE STATE ARCHITECT  
PC 02-109701  
AC. FLS. SS. SS.  
DATE 6/19/09  
PROJECT No.  
**S7**

THESE DRAWINGS AND SPECIFICATIONS ARE THE PROPERTY OF AMERICAN MODULAR SYSTEMS AND ARE NOT TO BE REPRODUCED, CHANGED OR COPIED IN ANY FORM OR MANNER, NOR ARE THEY TO BE ASSIGNED TO ANY THIRD PARTY WITHOUT THE WRITTEN AUTHORIZATION OF AMERICAN MODULAR SYSTEMS.