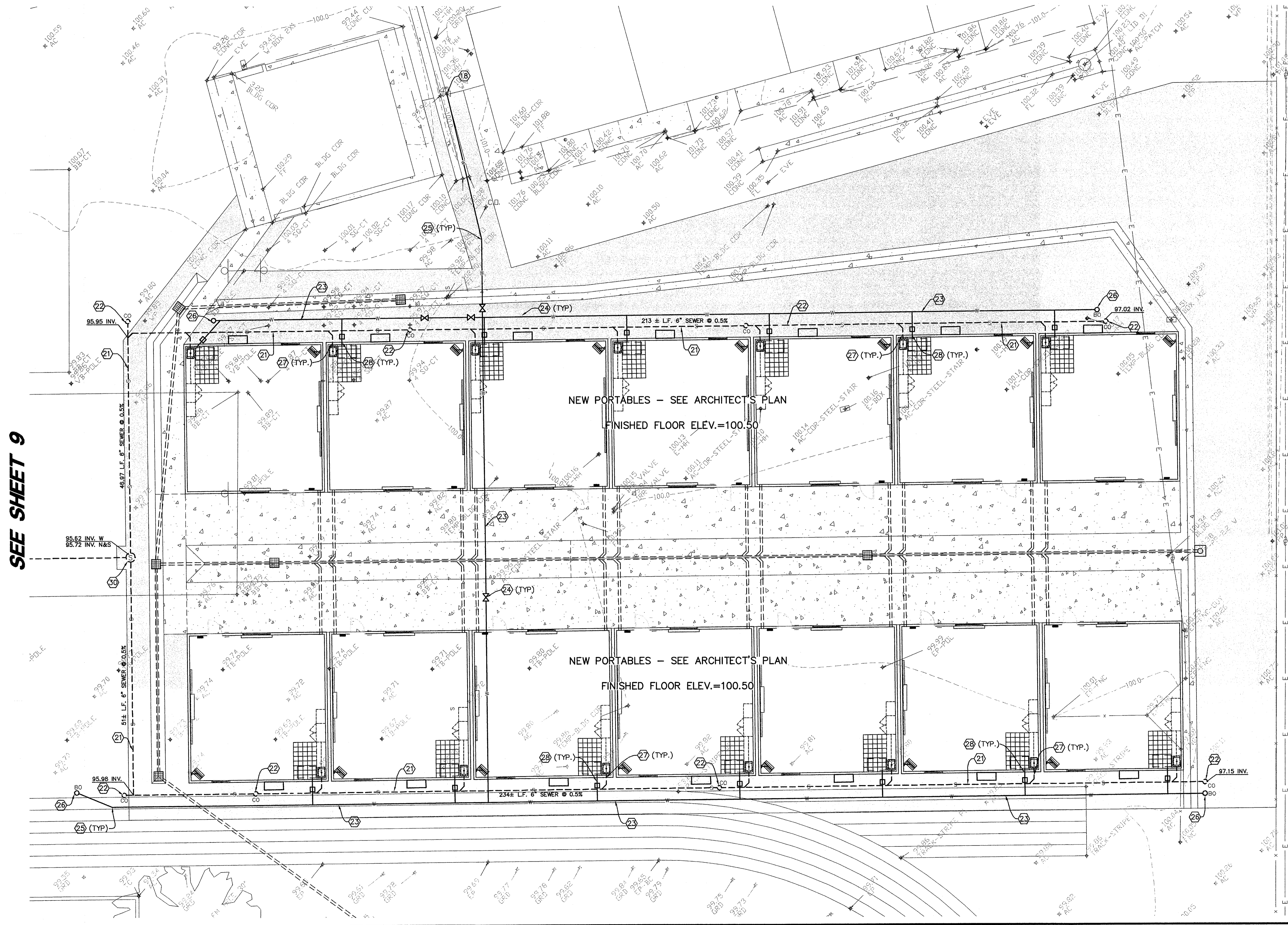
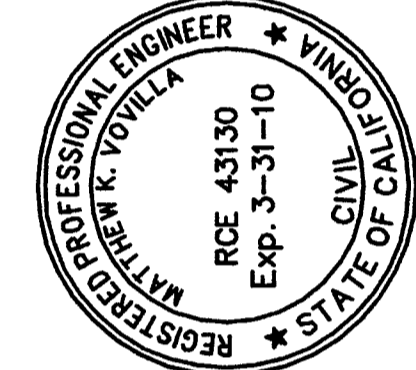


LEGEND (SEWER & WATER):

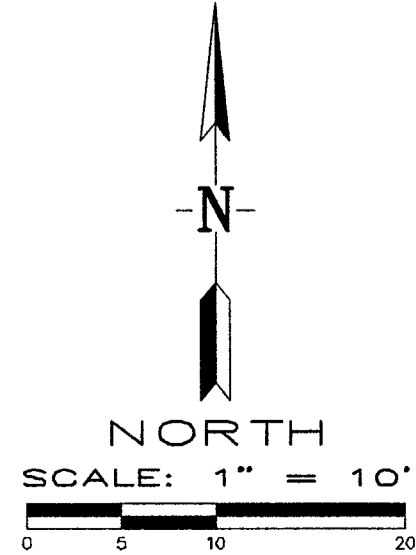
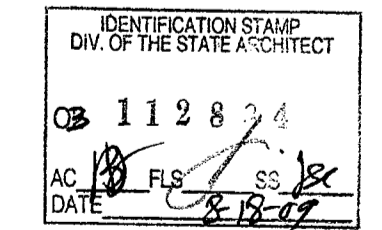
- W — PROPOSED 4-INCH DOMESTIC PVC WATER LINE
- PROPOSED WATER SERVICE, METER BOX WITH CORPORATION STOP (NO METER)
- - - S - - - PROPOSED 6" SEWER @ A MINIMUM SLOPE OF 0.5%
- PROPOSED SEWER CLEANOUT PER C.O.B. STANDARD SW-5 (SEE SHEET 4)
- ⊙ PROPOSED SEWER MANHOLE PER C.O.B. STANDARD SW-5 (SEE SHEET 4)
- ⊗ PROPOSED GATE VALVE AND VALVE BOX
- BO PROPOSED 4-INCH BLOW-OFF AND BOX PER C.O.B. STANDARD W-4 (SEE SHEET 4)
- - - D - - - PROPOSED STORM DRAIN
- ① CONSTRUCTION NOTE - SEE SHEET 3



SEE SHEET 9



8/17/2009	DATE
RCE 43130 EXP. 3/31/10	DATE
REVISIONS	
MATTHEW K. YOVILLA	



Pinnacle Civil Engineering, Inc.
 2161 Saturn Court, Bakersfield, CA 93308
 Phone: (661) 869-0184 Fax: (661) 377-0076

SITE IMPROVEMENT & GRADING PLAN
FREMONT ELEMENTARY
607 TEXAS STREET
BAKERSFIELD, CALIFORNIA

JOB No.:	09-389
DWG NO.:	09-389-EM03
DATE:	08/17/2009
DRAWN BY:	ADK
CHECKED BY:	MKV
SHEET	8
	OF 9 SHEETS