

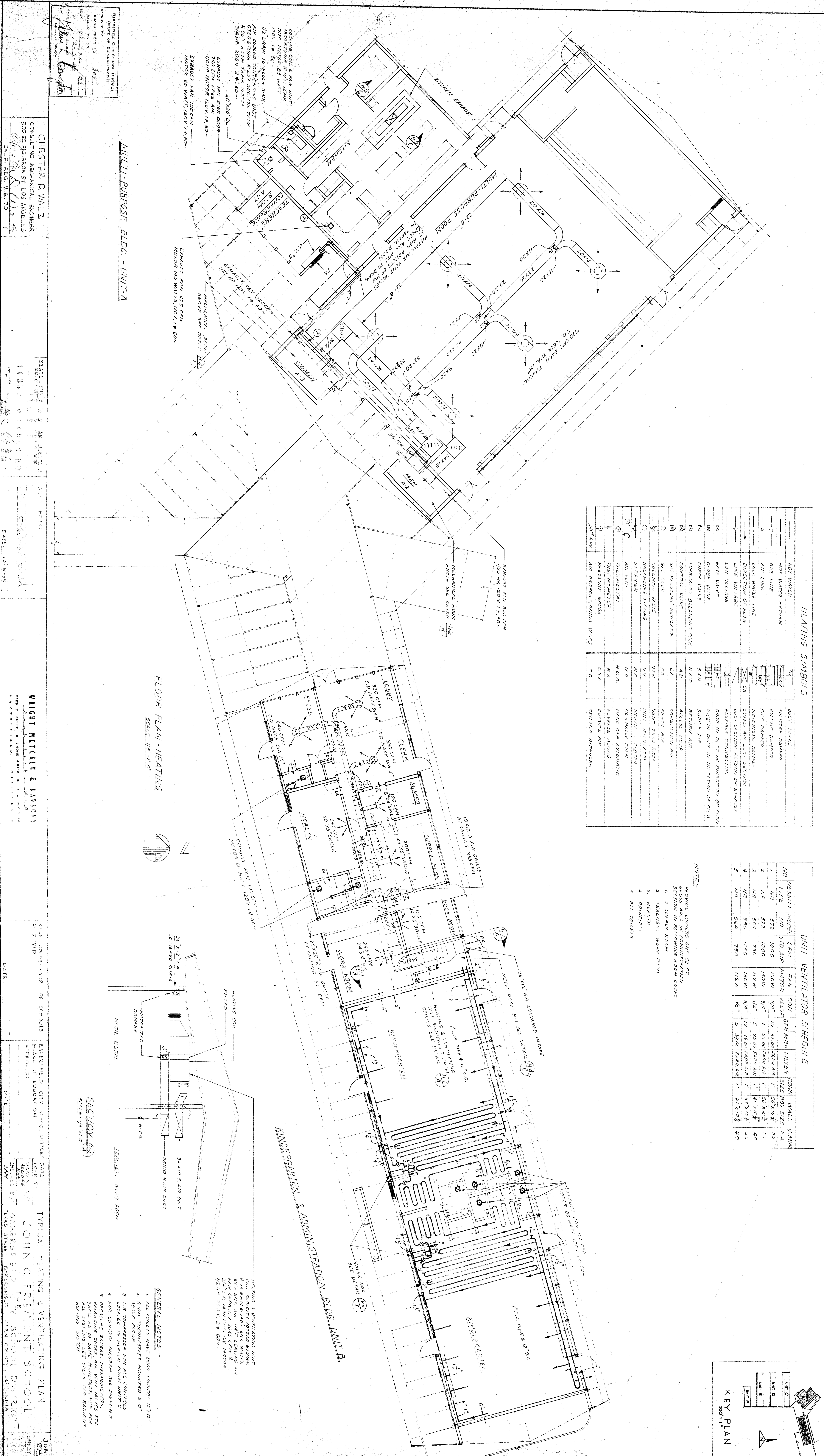
### HEATING SYMBOLS

—	HOT WATER
—	HOT WATER RETURN
—	GAS LINE
—	AIR LINE
—	COLD WATER LINE
—	DIRECTION OF FLOW
—	LOW VOLTAGE
—	GATE VALVE
—	CHECK VALVE
—	LIBERATOR BALANCING COCK
—	CONTROL VALVE
—	GAS PRESSURE REGULATOR
—	SOLENOID VALVE
—	BALANCING FITTINGS
—	STRAINER
—	AIR SERV
—	TIEMANSTAT
—	THEIR-METER
—	PRESSURE GAUGE
—	AIR PROPORTIONING VALVE
—	DUCT TRIMMS
—	SPLITTER DAMPER
—	VOLUME DAMPER
—	FINE DAMPER
—	MOTORIZED DAMPER
—	SIGNAL AIR DUCT SECTION
—	DUCT SECTION RETURN OR EXHAUST
—	FLEXIBLE CONNECTION
—	RISE IN DUCT IN DIRECTION OF FLOW
—	DROP IN DUCT IN DIRECTION OF FLOW
—	SUPPLY AIR
—	RETURN AIR
—	ACCESS DOOR
—	CONNECTION AIR
—	VENT AIR
—	VENT TO ROOF
—	UNIT VENTILATOR
—	NON-RETURN
—	ACTUALLY OPEN
—	HAND OFF ADJUSTING
—	REVERSE AIR
—	OUTSIDE AIR
—	CEILING DIFFUSER

### UNIT VENTILATOR SCHEDULE

NO	DESCRIPTION	CFM	FAV	COLL	GM/HB	FILTER	CONV	WALL	V.A.M.
1	NO	572	1000	3/4"	10	61.0"	56" X 10 1/2"	25	25
2	AIR	572	1000	3/4"	7	55.0"	50" X 10 1/2"	25	25
3	AIR	564	1120	1/2"	5	35.0"	41" X 10 1/2"	40	40
4	AIR	580	1250	3/4"	12	78.0"	57" X 10 1/2"	25	25
5	W/R	564	1120	1/2"	5	39.0"	41" X 10 1/2"	40	40

**NOTE**  
 PROVIDE LOWERS ONE 50 FT. GROSS AREA IN ADMINISTRATION SECTION IN FOLLOWING ROOM DECS:  
 1. 2 SUPPLY ROOM  
 2. TEACHERS WORK ROOM  
 3. HEALTH  
 4. PRINCIPAL  
 5. ALL TOILETS

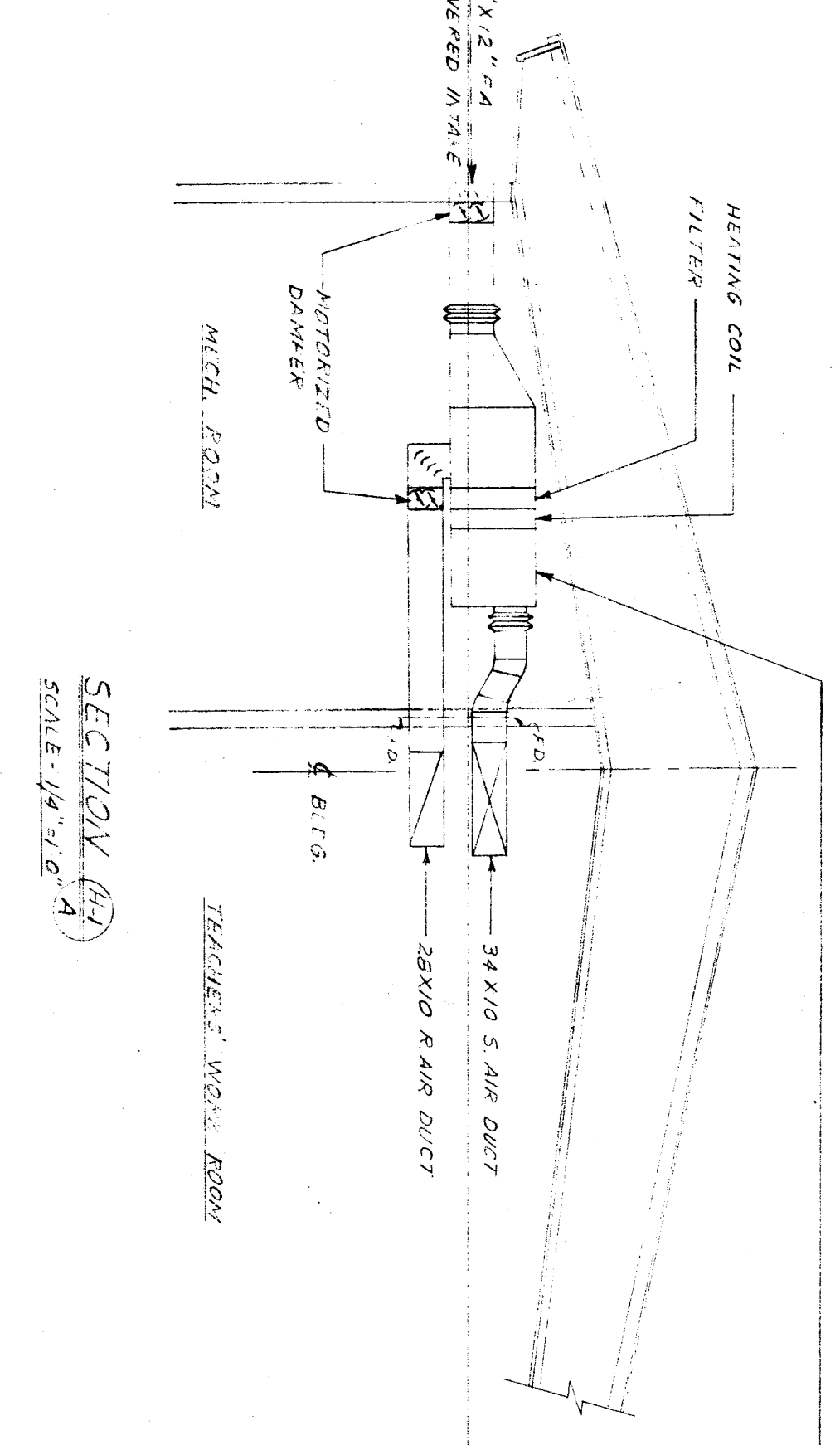


**FLOOR PLAN - HEATING**  
 SCALE - 1/8" = 1'-0"

**SECTION (A-A)**  
 SCALE - 1/4" = 1'-0"

- GENERAL NOTES**
1. ALL TOILETS HAVE DOOR LOCATED 12" X 12"
  2. ROOM THERMOSTATS MOUNTED 5'-0" ABOVE FLOOR
  3. AIR COMPRESSOR FOR ALL CONTROLS LOCATED IN HEATER ROOM UNIT-C
  4. FOR CONTROL DIAGRAMS SEE SHEET M-5
  5. PRESSURE GAUGES, THERMOSTATS, BALANCING COCKS, AIR SERV VALVES ETC. SHALL BE OF SAME MANUFACTURER FOR ALL SYSTEMS. SEE SHEET FOR RADIANT HEATING SYSTEM

**HEATING & VENTILATING UNIT**  
 COIL CAPACITY 10750 BTU/H  
 61.0" H.W. HANG ON WALL  
 FAN CAPACITY 5045 CFM @ 3/4" W.P.  
 5/8" W.P. 4100 CFM OR MOTOR  
 1/2" W.P. 2880 V. 57' 60"



**DIVISION OF CITY SCHOOL DISTRICT**  
 ARCHITECTS  
 CHESTER D. WALZ  
 CONSULTING MECHANICAL ENGINEER  
 500 S. PLACER ST. LOS ANGELES 5  
 CALIF. REG. ME. 73

**WRIGHT METCALE & PARSONS**  
 222 E. STREET  
 HARRISFIELD, CALIF.

**JOHN C. FLEMING SCHOOL**  
 1133  
 DATE: 10-28-53

**JOHN C. FLEMING SCHOOL**  
 1133  
 DATE: 10-28-53

**KEY PLAN**  
 500' 1"