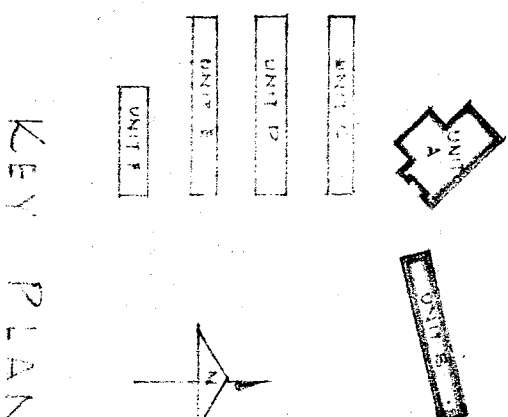


RECEPTACLE & SIGNAL FLOOR PLANS



NOTE!  
SEE SH. E1 FOR ROOM NAMES & NUMBERS

FOSTER K. SAMPSON  
ELECTRICAL ENGINEER  
101 WEST 8th ST.  
LOS ANGELES  
CALIF. REG. NO. 344

STATE DIVISION OF ARCHITECTURAL ARCHITECTS:  
STATE OF CALIFORNIA  
DIVISION OF ARCHITECTURE  
11332  
APPROVED: 10-9-53  
DATE: 10-9-53

WRIGHT METCALLE & PARSONS  
ARCHITECTS  
1100 PAVANIA  
PARKWAY  
LOS ANGELES 4, CALIFORNIA

KERN COUNTY Supt. of Schools  
APPROVED:  
DATE:

BAKERSFIELD CITY SCHOOL DISTRICT  
BOARD OF EDUCATION  
APPROVED:  
DATE:

DATE: 10/8/53  
DRAWN BY: R.S.  
CHECKED BY: A.C.M.

RECEPTACLE & SIGNAL PLANS A & B  
FOR THE  
JOHN C. FREMONT SCHOOL  
FOR THE  
BAKERSFIELD CITY SCHOOL DISTRICT  
TEAS STREET, BAKERSFIELD, KERN COUNTY, CALIFORNIA

BAKERSFIELD CITY SCHOOL DISTRICT OFFICE OF SUPERINTENDENT 1100 PAVANIA PARKWAY LOS ANGELES 4, CALIFORNIA	DATE: 10/8/53	NO. 289
APPROVED: [Signature]	DATE: 10/8/53	SHEET NO. 3