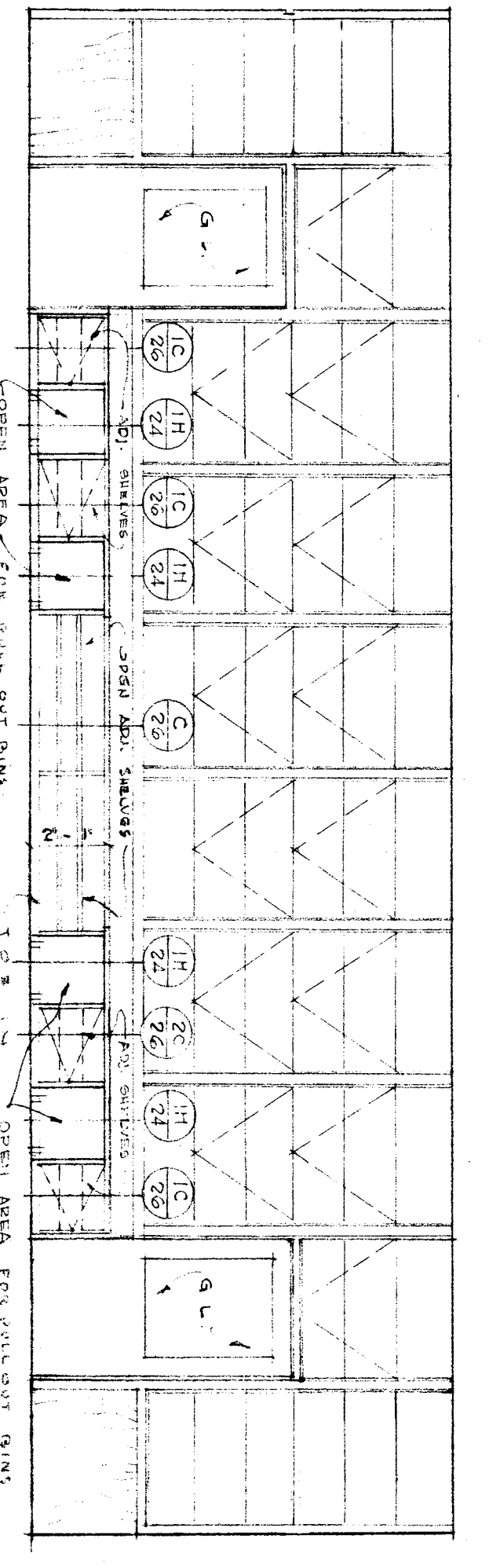
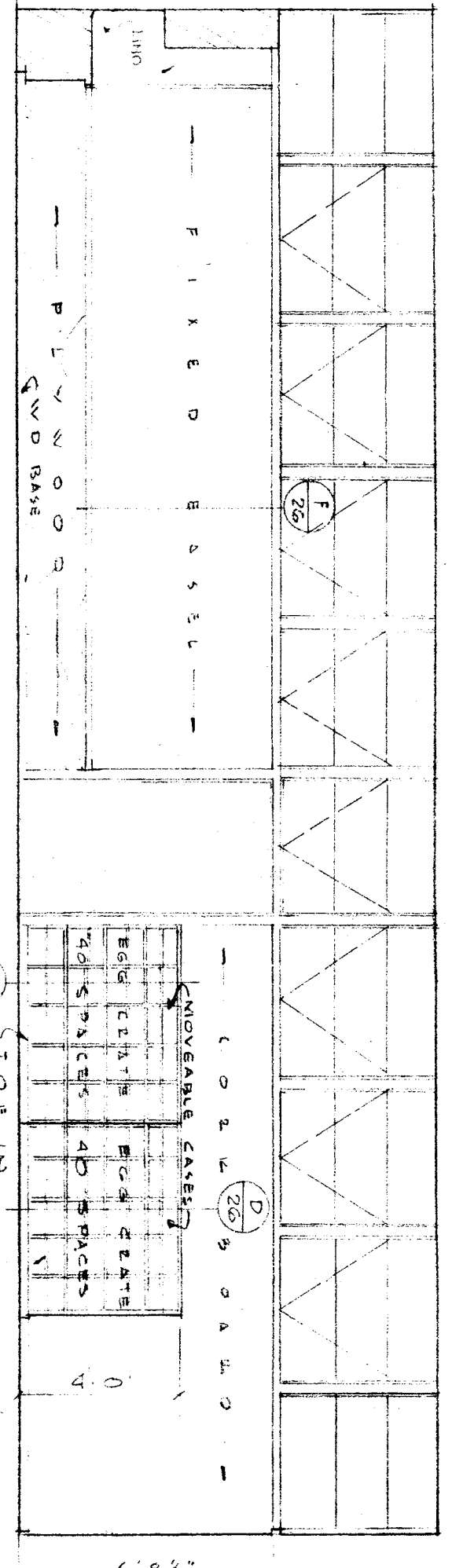


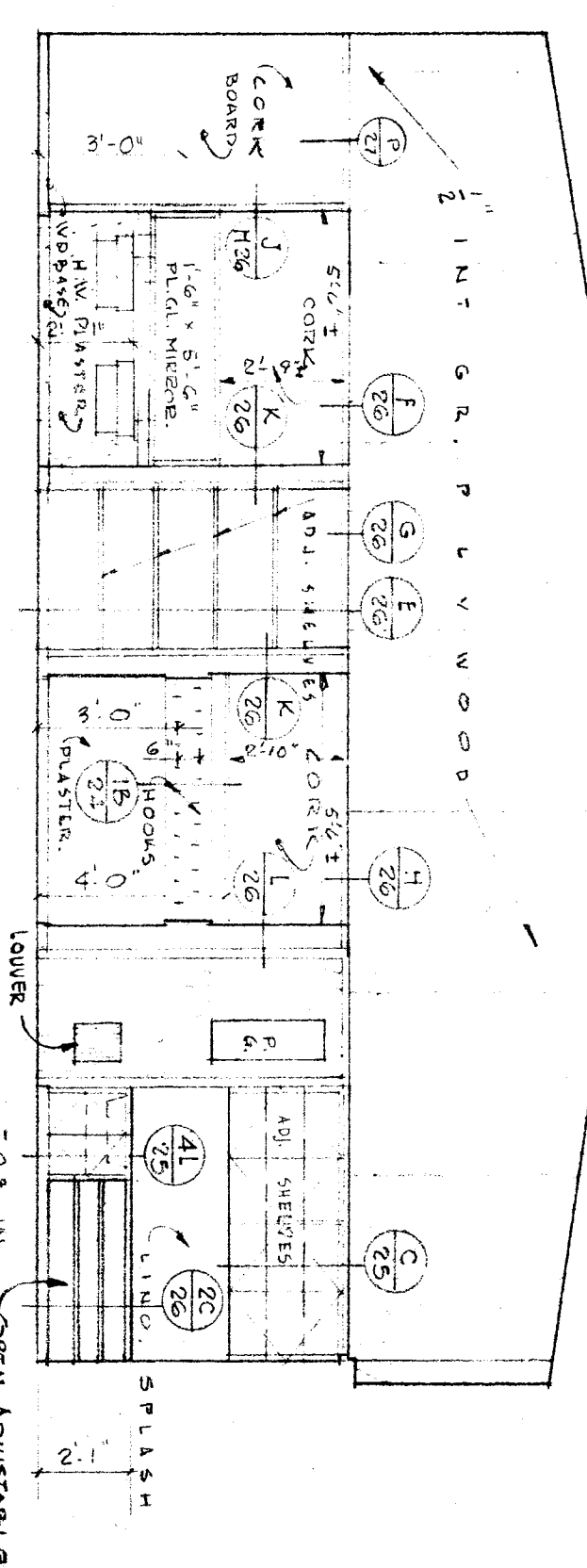
KINDERGARTEN FLOOR PLAN ROOMS 18 & 19



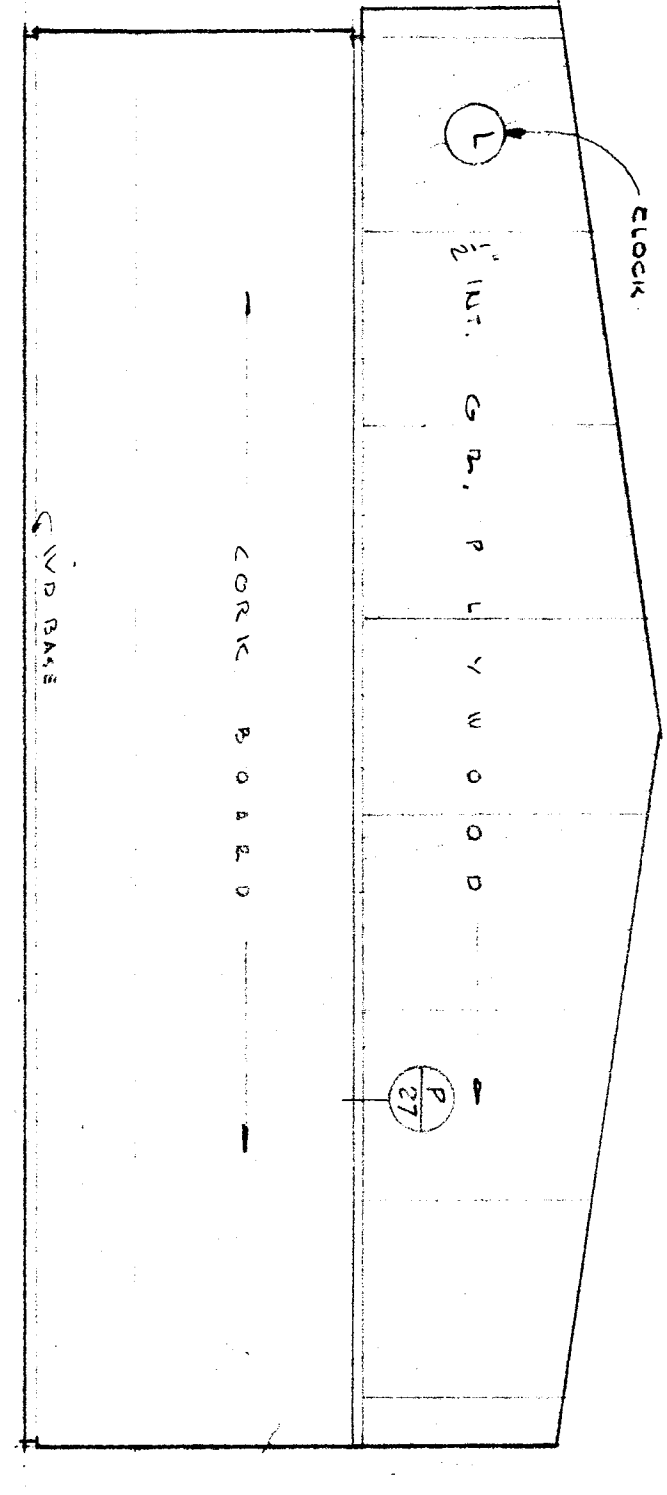
NORTH ELEV. (ROOM 18 SIMILAR)



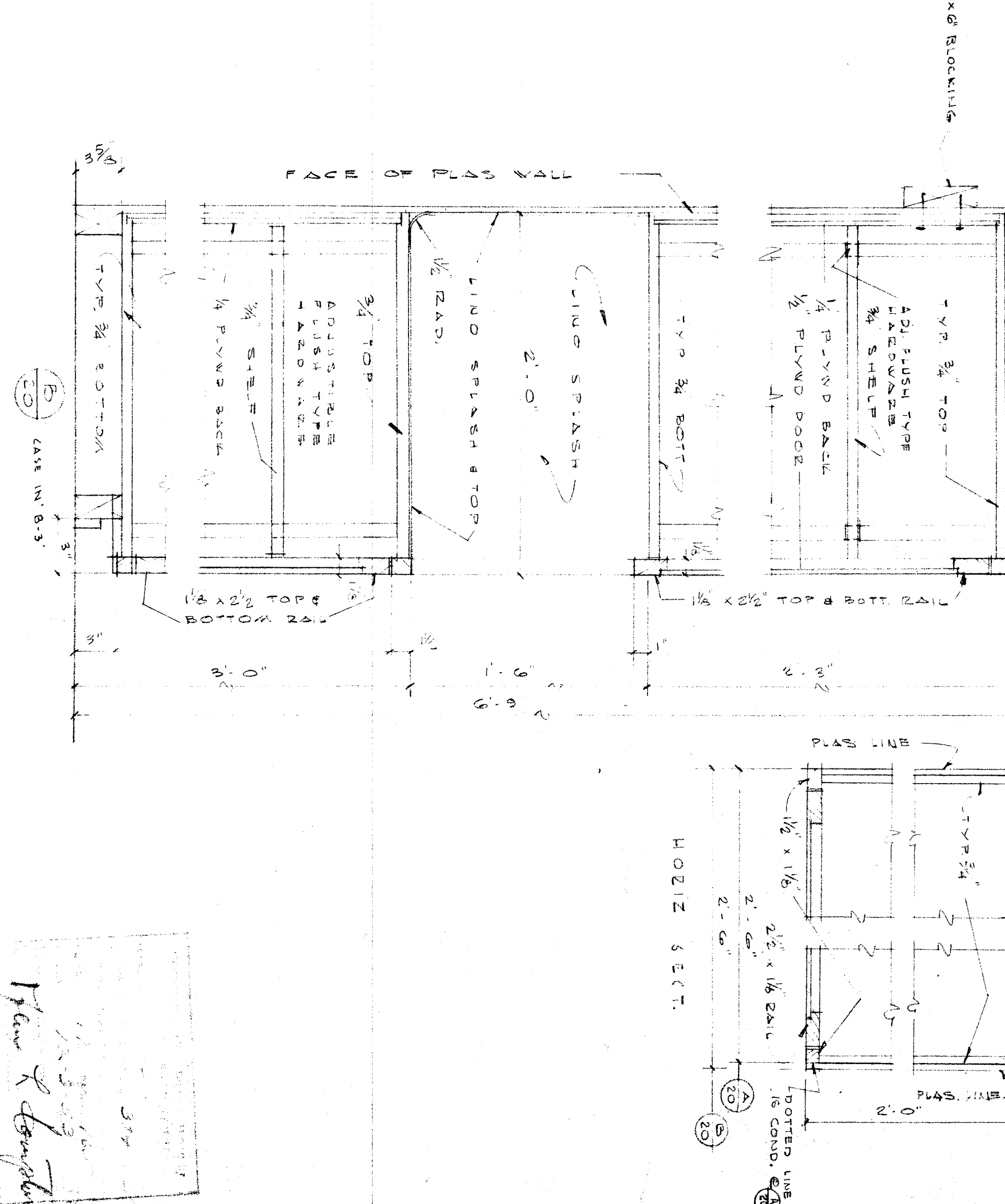
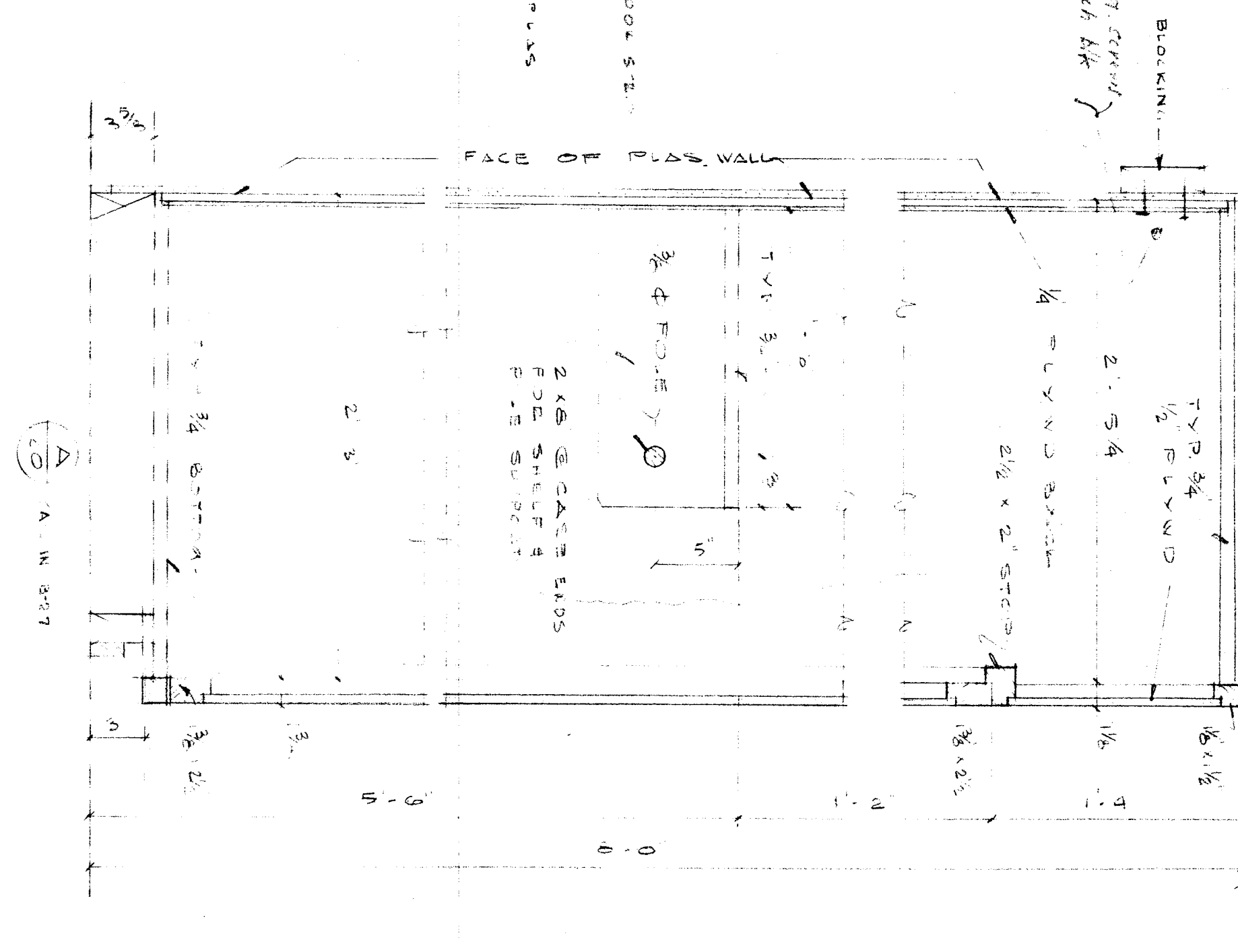
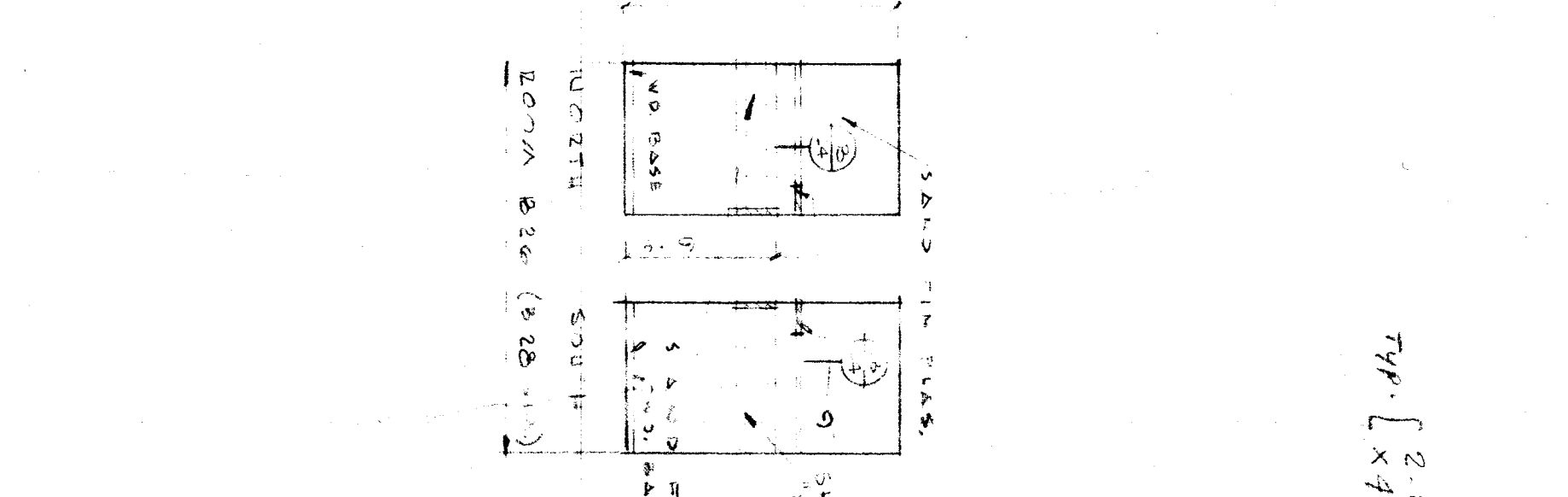
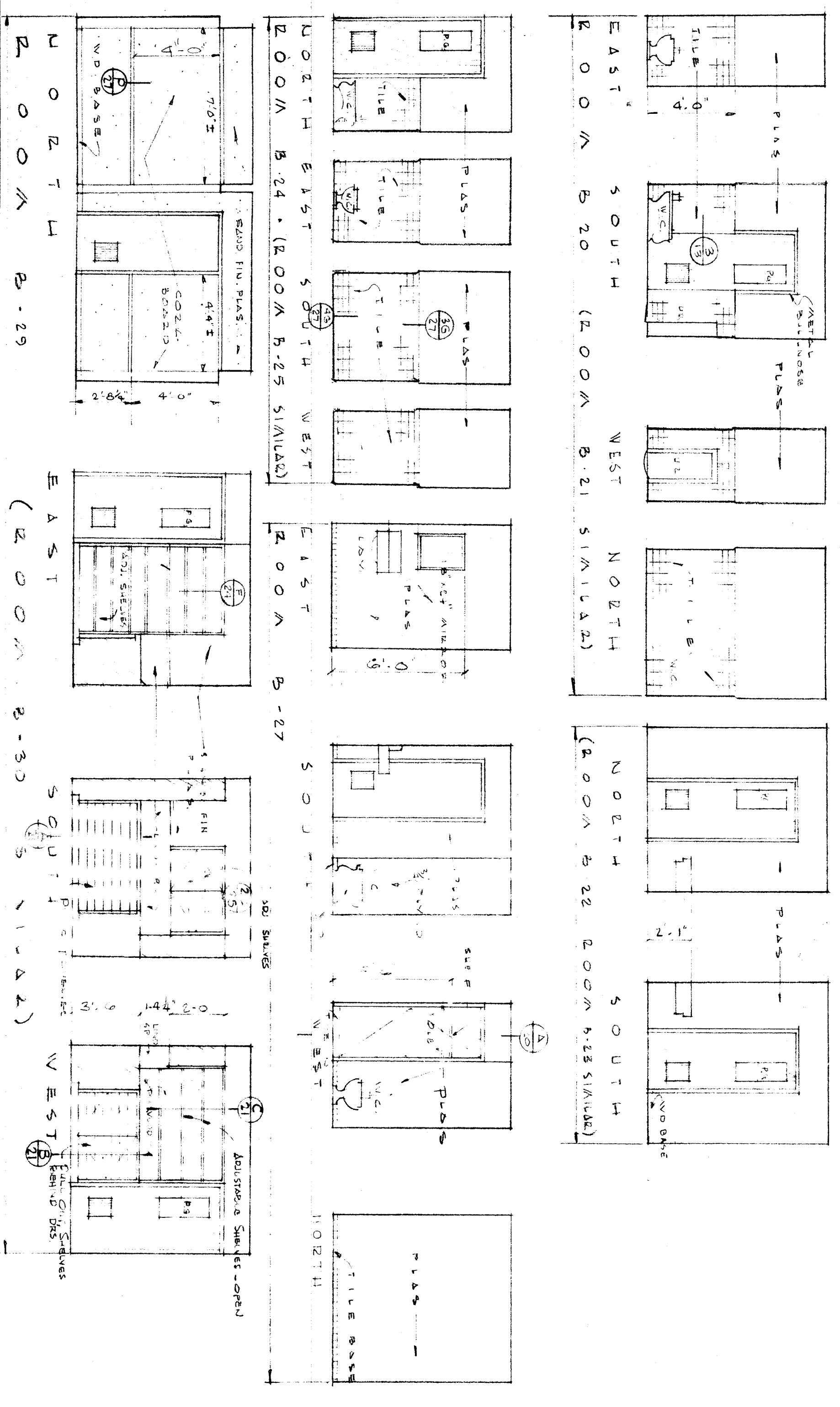
SOUTH ELEV. (ROOM 18 SIMILAR)



EAST ELEV. (ROOM 18 SIMILAR)



WEST ELEV. (ROOM 18 SIMILAR)



KINDERGARTEN PLAN & ELEVATIONS UNIT B
 JOHN C. FREMONT SCHOOL
 BALESFIELD CITY SCHOOL DISTRICT
 YAKAS STREET, BALESFIELD, KERN COUNTY, CALIFORNIA
 DATE: 10-8-31
 DRAWN BY: JOHN C. FREMONT
 CHECKED BY: A.C.N.
 SHEET NO. 20