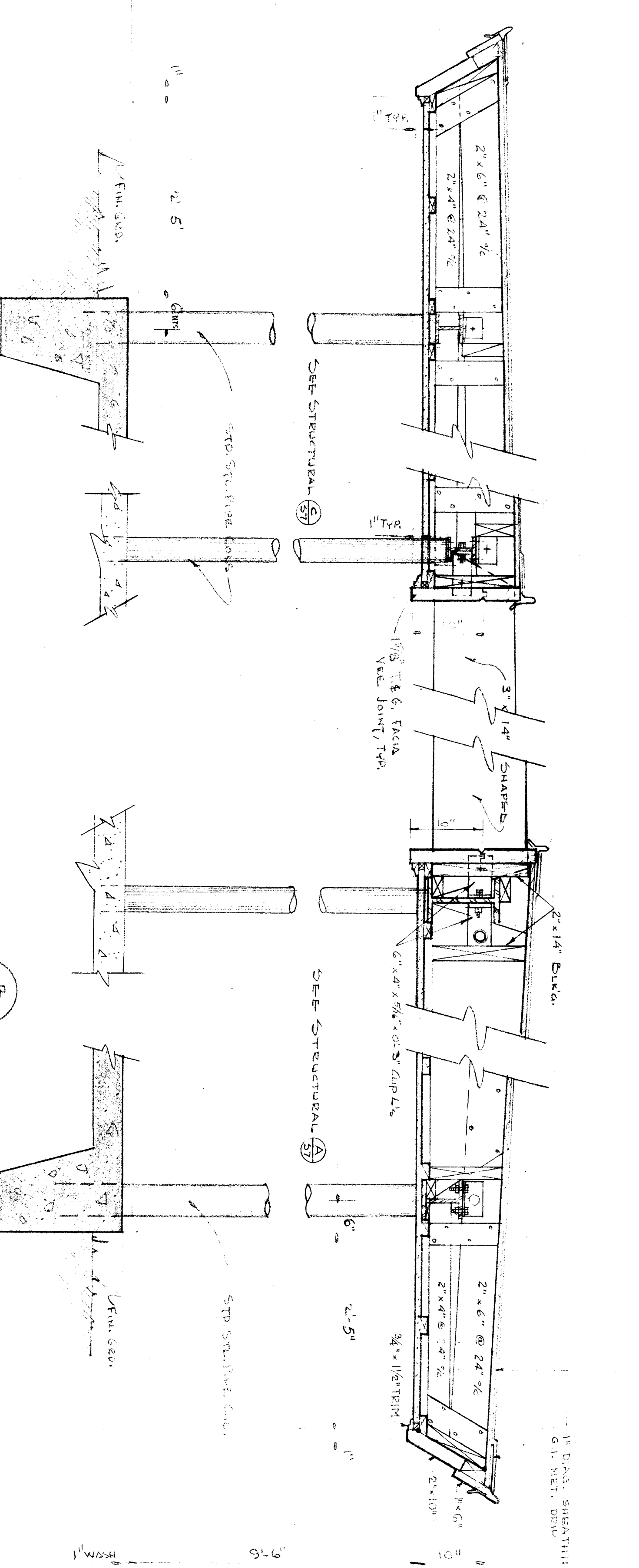
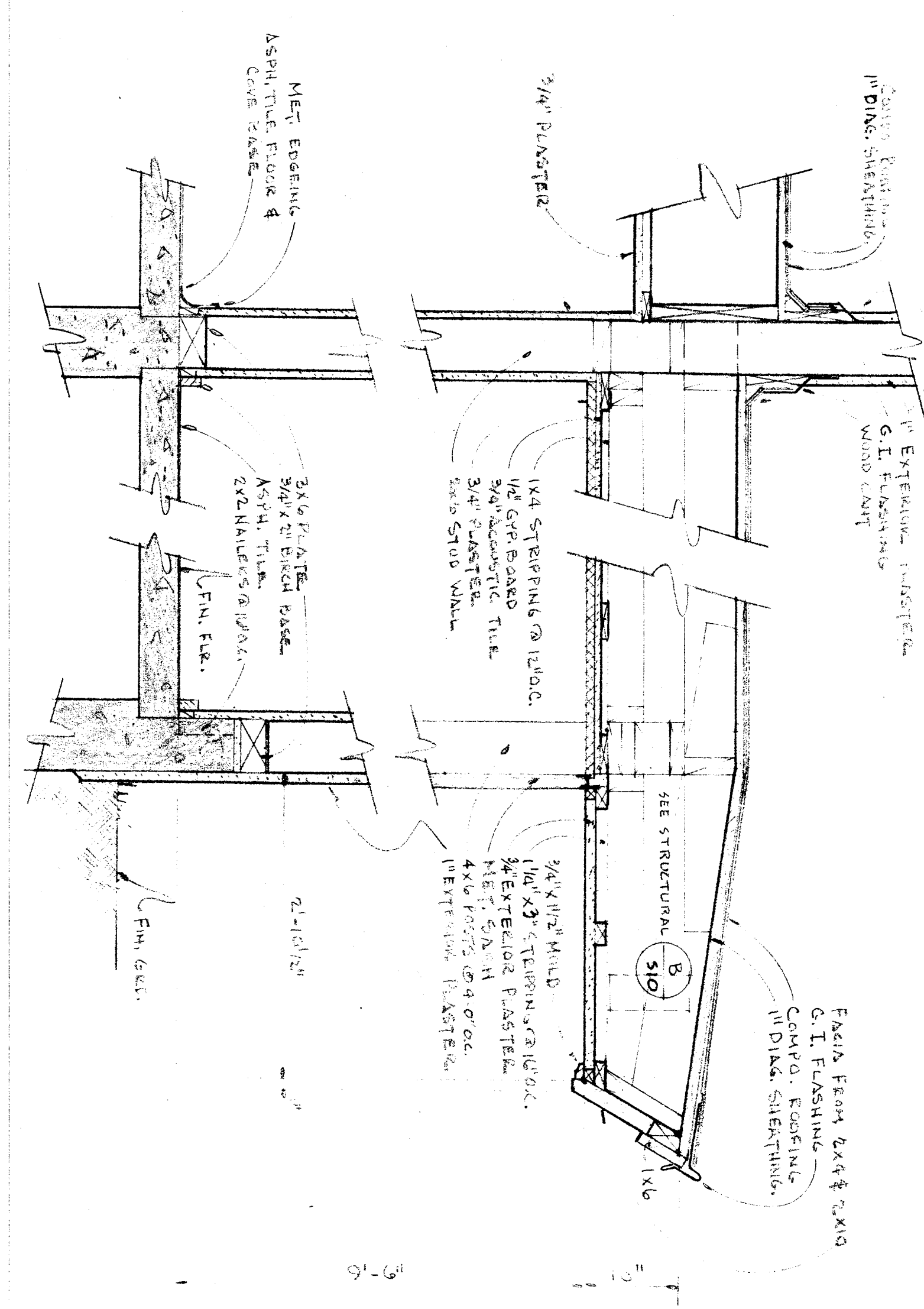


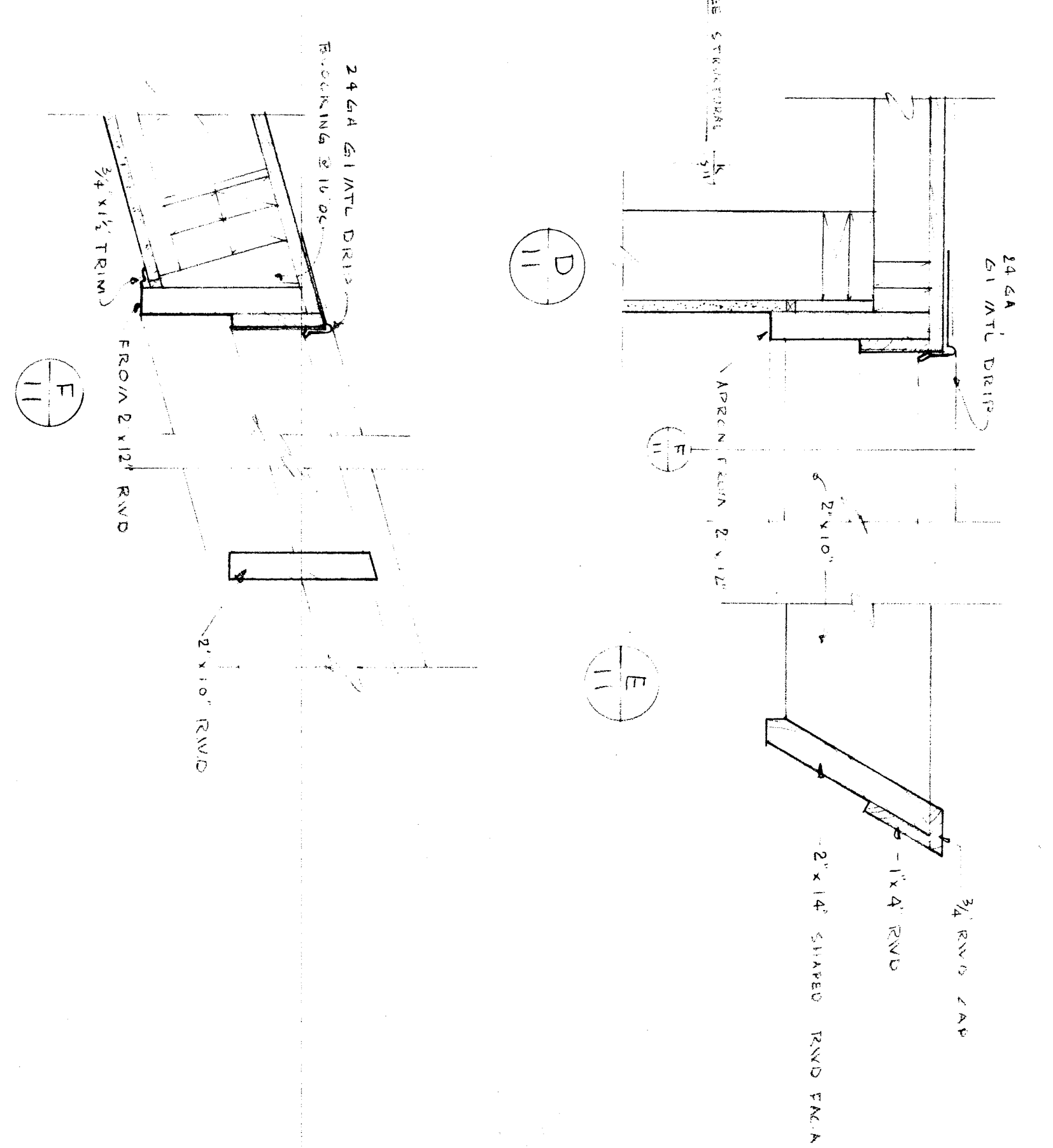
TYPICAL COVERED WALK DETAIL
Scale: 1/4" = 1'-0"



TYPICAL CANOPY DETAILS
Scale: 1/4" = 1'-0"



SECTION THRU CONFERENCE ROOM
Scale: 1/4" = 1'-0"



Scale: 1/4" = 1'-0"

STATE DIVISION OF ARCHITECTURE ARCHITECT: <i>John C. Fremont</i> DATE: 10.8.33		ARCHITECT: <i>John C. Fremont</i> DATE: 10.8.33		ARCHITECT: <i>John C. Fremont</i> DATE: 10.8.33	
CLIENT: COUNTY DEPT. OF SCHOOLS APPROVED: _____ BOARD OF EDUCATION		CLIENT: COUNTY DEPT. OF SCHOOLS APPROVED: _____ BOARD OF EDUCATION		CLIENT: COUNTY DEPT. OF SCHOOLS APPROVED: _____ BOARD OF EDUCATION	
PROJECT: BALKSFIELD CITY SCHOOL DISTRICT ARCHITECT: JOHN C. FREMONT DATE: _____		PROJECT: BALKSFIELD CITY SCHOOL DISTRICT ARCHITECT: JOHN C. FREMONT DATE: _____		PROJECT: BALKSFIELD CITY SCHOOL DISTRICT ARCHITECT: JOHN C. FREMONT DATE: _____	
ARCHITECT: JOHN C. FREMONT BALKSFIELD CITY SCHOOL DISTRICT TEXAS		ARCHITECT: JOHN C. FREMONT BALKSFIELD CITY SCHOOL DISTRICT TEXAS		ARCHITECT: JOHN C. FREMONT BALKSFIELD CITY SCHOOL DISTRICT TEXAS	
SHEET NO. 289 OF 289		SHEET NO. 289 OF 289		SHEET NO. 289 OF 289	