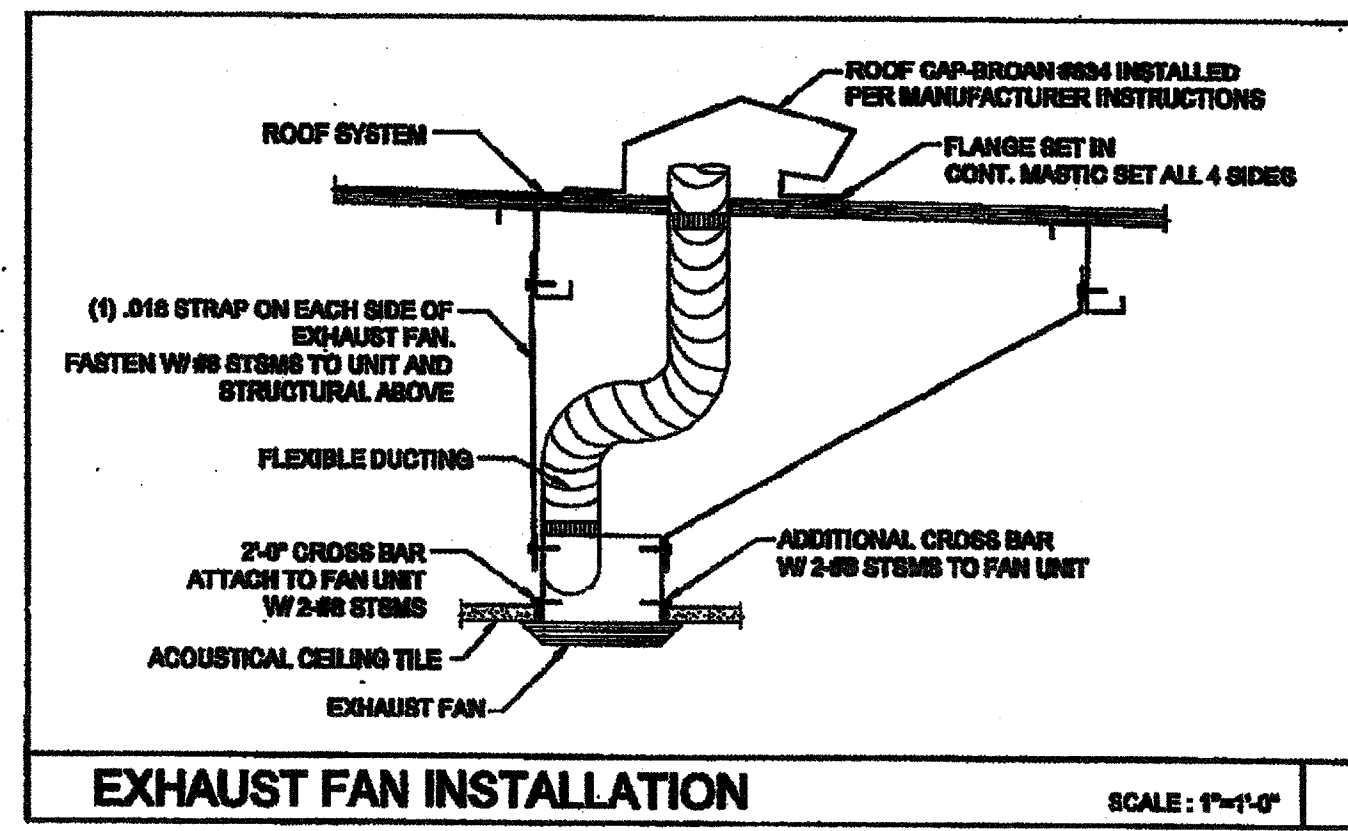


LEGEND		
SYMBOL	ABB.	DESCRIPTION
	SAD	SUPPLY AIR DUCT
	RAD	RETURN AIR DUCT
	EAD	EXHAUST AIR DUCT
	(L)	LINED DUCTWORK
	CD	SUPPLY CEILING DIFFUSER
	CR	RETURN CEILING REGISTER
	ER	EXHAUST CEILING REGISTER
	VTR	VENT THRU ROOF
	FD	FIRE DAMPER
	MVD	MANUAL VOLUME DAMPER
	UC	UNDERCUT DOOR
	STAT	THERMOSTAT
	BT	BYPASS TIMER
	P.O.C	POINT OF CONNECTION



GENERAL NOTES

ALL MECHANICAL, PLUMBING AND ELECTRICAL COMPONENTS SHALL BE ANCHORED AND INSTALLED PER THE DETAILS ON THE DBA APPROVED CONSTRUCTION DOCUMENTS. WHERE NO DETAIL IS INDICATED, THE FOLLOWING COMPONENTS SHALL BE ANCHORED OR BRACED TO MEET THE FORCE AND DISPLACEMENT REQUIREMENTS PRESCRIBED IN THE 2010 CBC, SECTIONS 1915A.1.20 THROUGH 1915A.1.22 AND ASCE 7-05 CHAPTER 8 AND 13.

- ALL PERMANENT EQUIPMENT AND COMPONENTS.
- TEMPORARY OR MOVABLE EQUIPMENT THAT IS PERMANENTLY ATTACHED (E.G. HARD WIRED) TO THE BUILDING UTILITY SERVICES SUCH AS ELECTRICITY, GAS OR WATER.
- MOVABLE EQUIPMENT WHICH IS STATIONED IN ONE PLACE FOR MORE THAN 8 HOURS AND HEAVIER THAN 400 POUNDS ARE REQUIRED TO BE ANCHORED WITH TEMPORARY ATTACHMENTS.

THE ATTACHMENT OF THE FOLLOWING MECHANICAL AND ELECTRICAL COMPONENTS SHALL BE POSITIVELY ATTACHED TO THE STRUCTURE, BUT NEED NOT BE DETAILED ON THE PLANS. THESE COMPONENTS SHALL HAVE FLEXIBLE CONNECTIONS PROVIDED BETWEEN THE COMPONENT AND ASSOCIATED DUCTWORK, PIPING, AND CONDUIT.

A. COMPONENTS WEIGHING LESS THAN 400 POUNDS AND HAVE A CENTER OF MASS LOCATED 4 FEET OR LESS ABOVE THE ADJACENT FLOOR OR ROOF LEVEL THAT DIRECTLY SUPPORT THE COMPONENT.

B. COMPONENTS WEIGHING LESS THAN 20 POUNDS, OR IN THE CASE OF DISTRIBUTED SYSTEMS, LESS THAN 5 POUNDS PER FOOT, WHICH ARE SUSPENDED FROM A ROOF OR FLOOR OR HUNG FROM A WALL.

FOR THOSE ELEMENTS THAT DO NOT REQUIRE DETAILS ON THE APPROVED DRAWINGS, THE INSTALLATION SHALL BE SUBJECT TO THE APPROVAL OF THE STRUCTURAL ENGINEER OF RECORD AND THE DBA DISTRICT STRUCTURAL ENGINEER. THE PROJECT INSPECTOR WILL VERIFY THAT ALL COMPONENTS AND EQUIPMENT HAVE BEEN ANCHORED IN ACCORDANCE WITH ABOVE REQUIREMENTS.

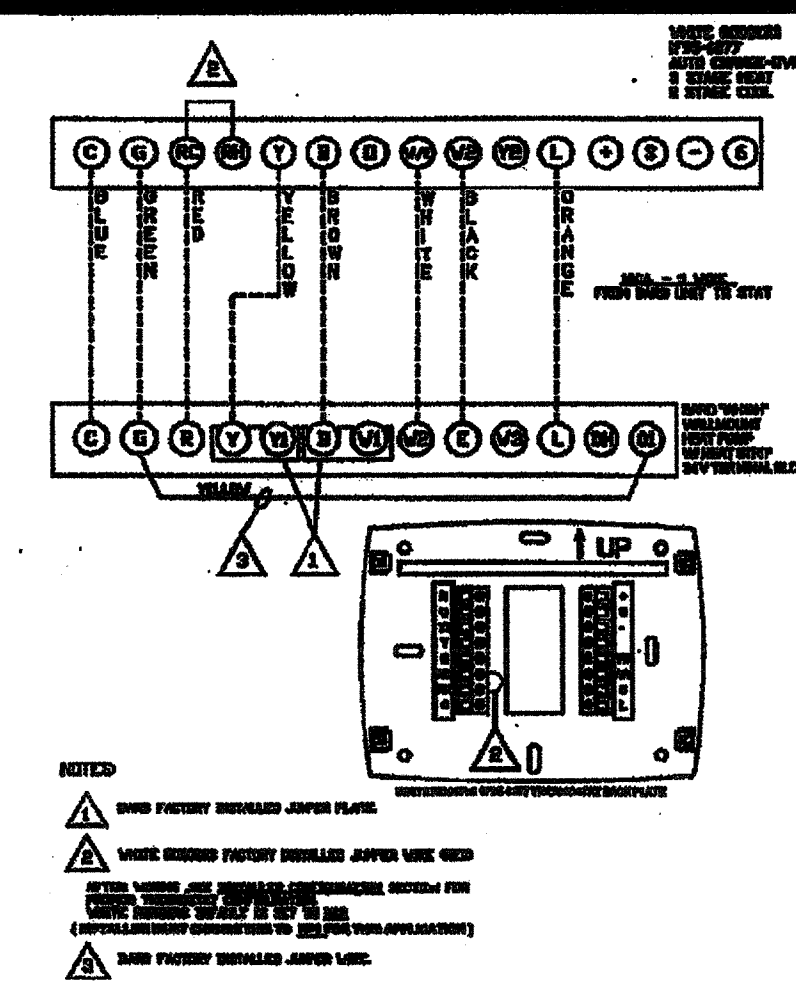
PIPING, DUCTWORK AND ELECTRICAL DISTRIBUTION SYSTEM BRACING NOTE

PIPING, DUCTWORK AND ELECTRICAL DISTRIBUTION SYSTEMS SHALL BE BRACED TO COMPLY WITH THE FORCES AND DISPLACEMENTS PRESCRIBED IN ASCE 7-05 SECTION 13.3 AS DEFINED IN ASCE 7-05 SECTION 13.8.8, 13.8.7, 13.8.5.5 AND 2010 CBC SECTIONS 1915A.1.20, 1915A.1.21 AND 1915A.1.22.

THE BRACING AND ATTACHMENTS TO THE STRUCTURE SHALL BE DETAILED ON THE APPROVED DRAWINGS OR THEY SHALL COMPLY WITH ONE OF THE CBC PD-APPROVALS (OPA #) AS MODIFIED TO SATISFY ANCHORAGE REQUIREMENTS OF ACI 318, APPENDIX D.

COPIES OF THE MANUAL SHALL BE AVAILABLE ON THE JOBSITE PRIOR TO THE START OF HANGING AND BRACING OF THE PIPE, DUCTWORK AND ELECTRICAL DISTRIBUTION SYSTEMS.

THE STRUCTURAL ENGINEER OF RECORD SHALL VERIFY THE ADEQUACY OF THE STRUCTURE TO SUPPORT THE HANGER AND BRACE LOADS.

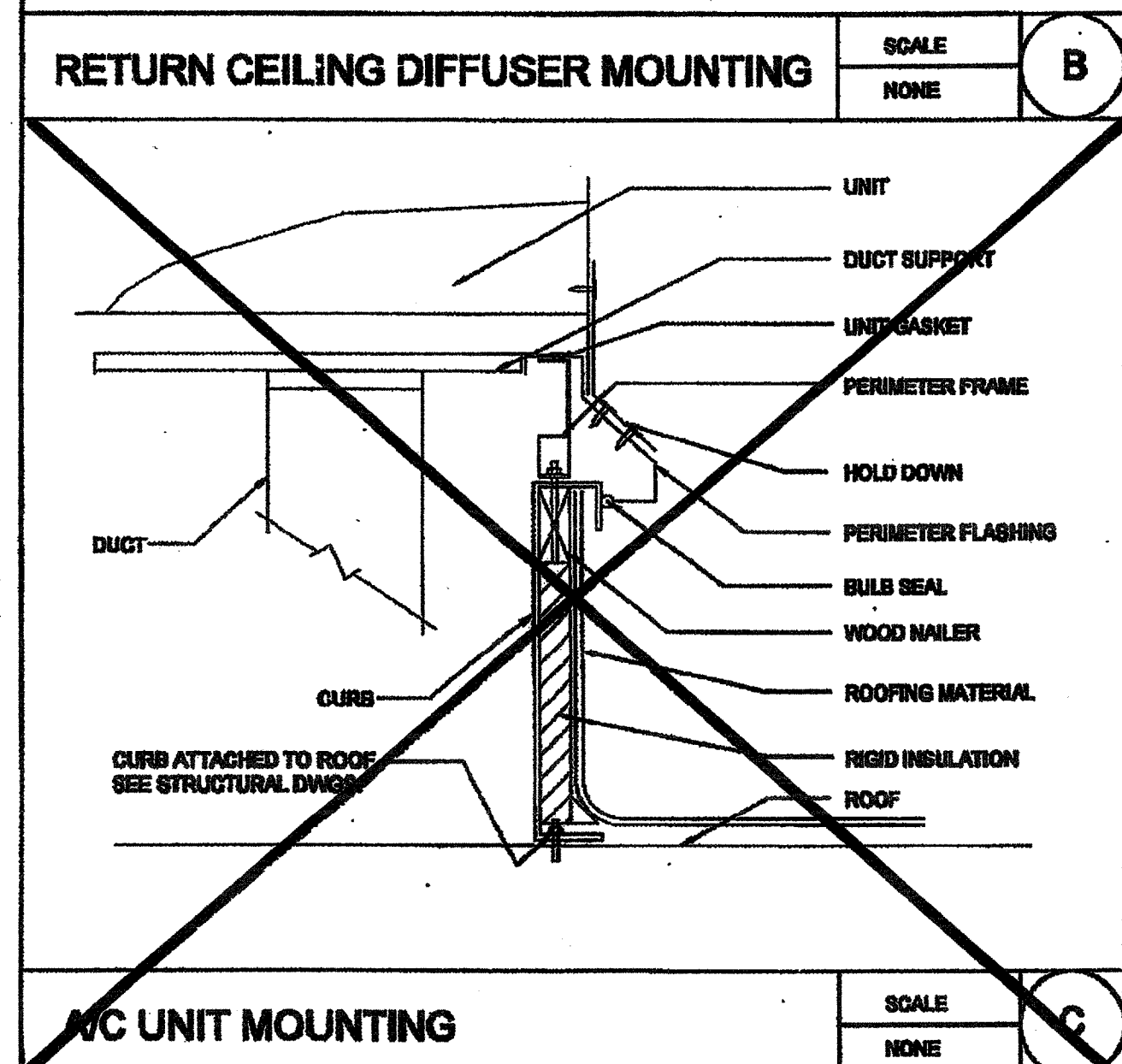
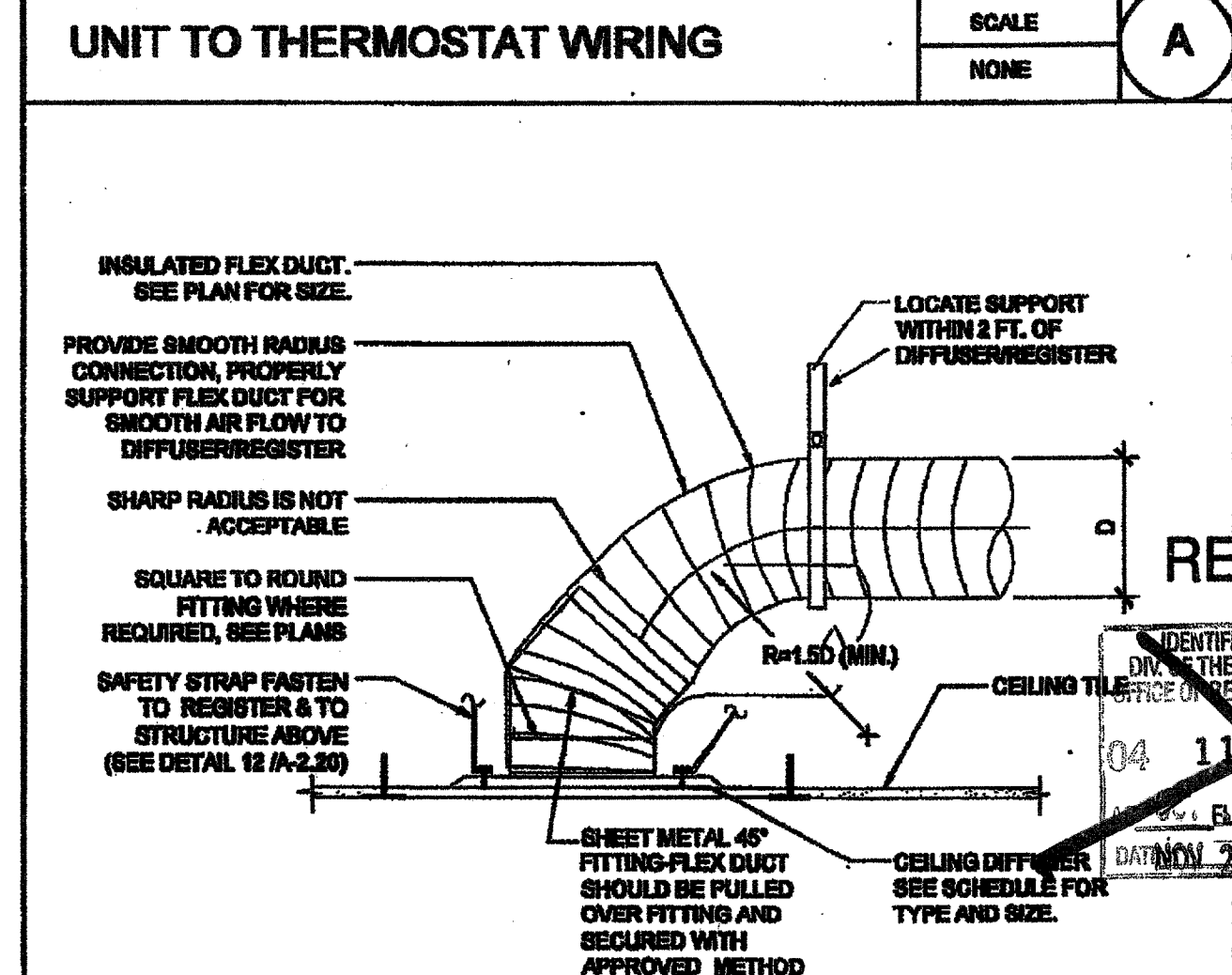
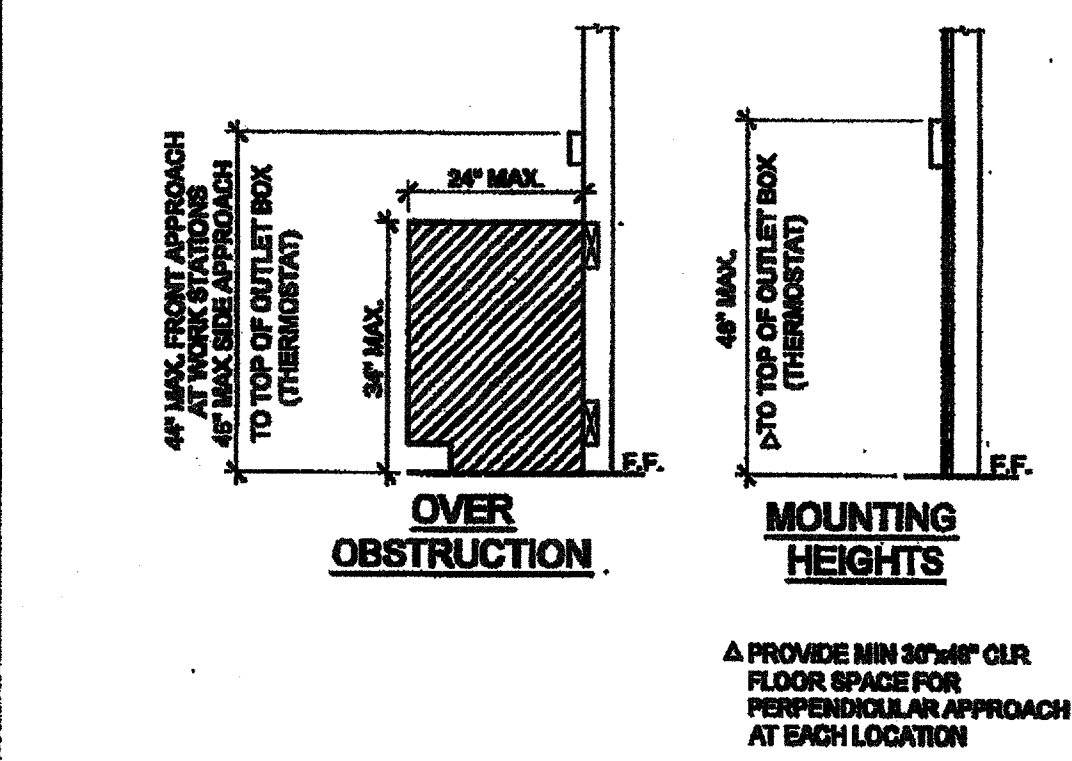
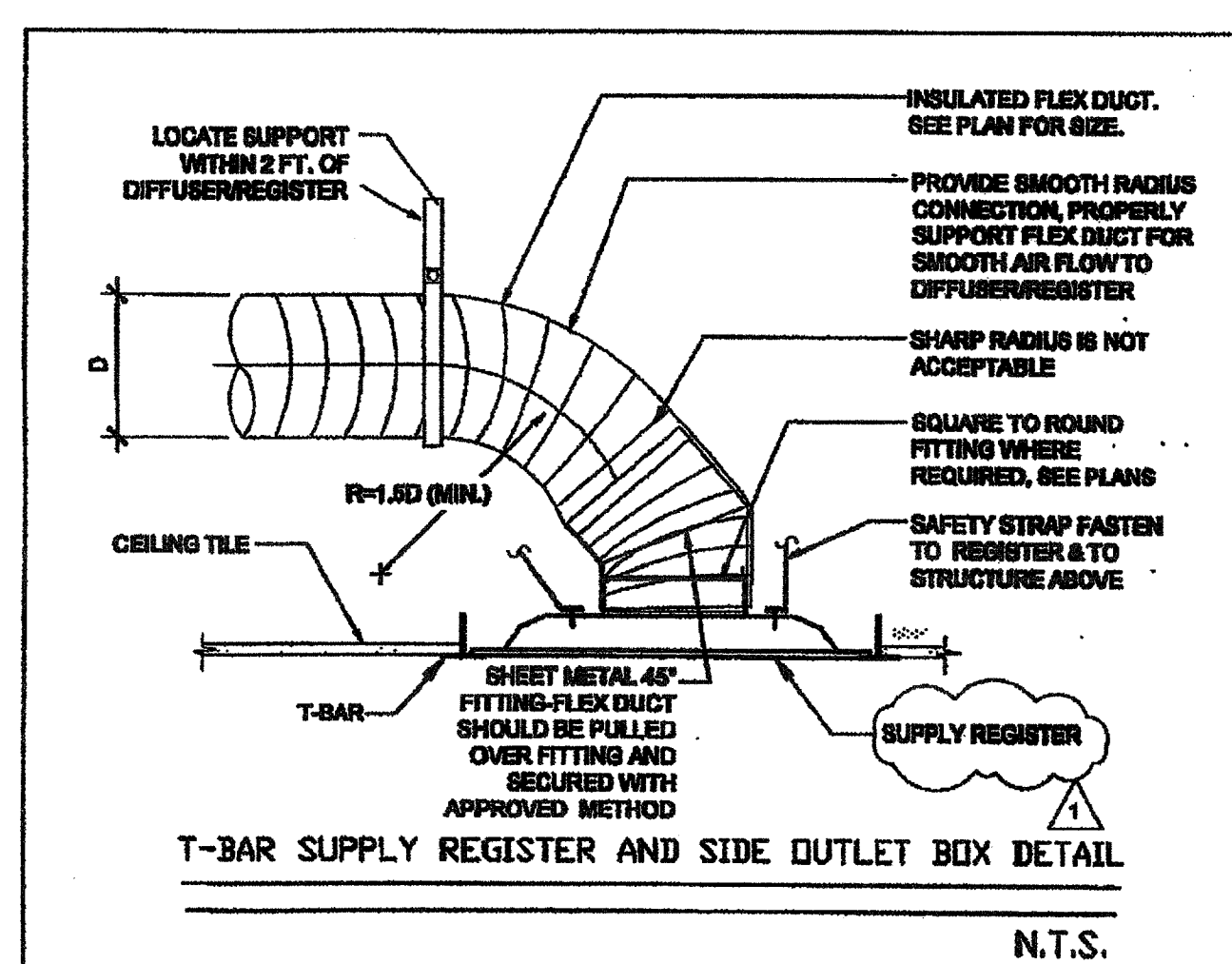


CEILING MOUNTED EXHAUST FAN SCHEDULE												
SYM.	LOCATION	SERVICE	MANUF.	MODEL	CFM	SONES	SP	ELECTRICAL			REMARKS	
								VOLTS	#	POWER		
EF 1	CEILING	TOILET EXHAUST	BROAN	678	100	4.0	0.25	120	1	150 WATTS	7 LBS.	WITH BROAN ROOF CAP #836. PROVIDE 4" DIA. EXHAUST DUCT UP TO ROOF. INTERLOCK WITH LIGHT SWITCH.
EF 2	CEILING	TOILET EXHAUST	BROAN	L100	109	1.0	0.25	120	1	87 WATTS	22.0 LBS.	WITH BROAN ROOF CAP #834. PROVIDE 6" DIA. EXHAUST DUCT UP TO ROOF. INTERLOCK WITH LIGHT SWITCH.
EF 3	CEILING	TOILET EXHAUST	BROAN	L200	210	2.0	0.25	120	1	127 WATTS	29.0 LBS.	WITH BROAN ROOF CAP #834. PROVIDE 6" DIA. EXHAUST DUCT UP TO ROOF. INTERLOCK WITH LIGHT SWITCH.
EF 4	CEILING	TOILET EXHAUST	BROAN	L300	308	2.8	0.25	120	1	212 WATTS	25.10 LBS.	WITH BROAN ROOF CAP #834. PROVIDE 6" DIA. EXHAUST DUCT UP TO ROOF. INTERLOCK WITH LIGHT SWITCH.

OR APPROVED EQUAL.

PERFORATED FACE GRILLE SCHEDULE (SUPPLY)			
ITEM	NECK SIZE	RANGE CFM	MFG & MODEL #
T-BAR SUPPLY	6"Ø	0 - 150	Fixed Curve Blade, 4-way throw
	8"Ø	150 - 230	For In-In T-bar ceilings use Hirth & Cooley SD-0419. (Sizes as shown on Mech Plan)
	10"Ø	230 - 350	
	12"Ø	350 - 460	
	14"Ø	460 - 640	

PERFORATED FACE GRILLE SCHEDULE (RETURN)			
ITEM	NECK SIZE	RANGE CFM	MFG & MODEL #
T-BAR RETURN	6"Ø	0 - 230	Perforated face
	10"Ø	230 - 460	For In-In T-bar ceilings use Shoemaker 10SP with 24 ga., 45 deg. angle. (Sizes as shown on Mech Plan.)
	14"Ø	460 - 710	



BUILDING SIZES VARY. SEE KEY PLANS ON SHEET A-0.3 FOR APPROPRIATE HVAC TONNAGE PER BUILDING SIZE.

THESE DRAWINGS AND ALL MATERIAL CONTAINED HEREIN ARE THE PROPERTY OF SILVERCREEK INDUSTRIES, INC. (SCI Inc) AND SHALL NOT BE REPRODUCED, COPIED OR OTHERWISE DISPOSED OF DIRECTLY OR INDIRECTLY AND SHALL NOT BE USED IN WHOLE OR IN PART TO ASSIST IN THE MAKING OF OR FOR THE PURPOSE OF FURNISHING ANY INFORMATION FOR THE MAKING OF DRAWINGS, PRINTS, APPARATUS OR PARTS THEREOF WITHOUT THE FULL KNOWLEDGE AND WRITTEN CONSENT OF SCI Inc. ALL PATENTABLE MATERIAL CONTAINED HEREIN AND ORIGINATING WITH SCI Inc SHALL BE THE PROPERTY OF SCI Inc.

SILVER CREEK INDUSTRIES, INC.
"BUILDING FOR THE NEXT GENERATION"
SILVER CREEK
175 EAST MORGAN PERRIS, CALIFORNIA 92571
PHONE: 951-943-5299 FAX: 951-943-2211

PROJECT NAME:
CLASS LEASING CLASSROOMS BLDG'S

SHEET TITLE:
MECHANICAL NOTES, SCHEDULES, & DETAILS

REVISED
FEB 26 2015
TAVARES ARCHITECTS
ARCHITECT OF RECORD
SEP 19 2012

PROJECT SPECIFIC STATE AGENCY APPROVAL
IDENTIFICATION STAMP
DIV. OF THE STATE ARCHITECT
OFFICE OF REGULATION SERVICES
DATE: AUG 28 2014

ORIGINAL PC STATE AGENCY APPROVAL
IDENTIFICATION STAMP
DIV. OF THE STATE ARCHITECT
OFFICE OF REGULATION SERVICES
DATE: AUG 28 2014

REVISED
PC REVISION 09/14/2012

SILVER CREEK INDUSTRIES
24' x 49' PC

PROJECT NO:
DRAWN BY:
SCALE: AS NOTED
DATE: 12-23-11
P.C. SHEET NUMBER
M-0.1
STKP 126

IDENTIFICATION STAMP
DIV. OF THE STATE ARCHITECT
AP03 116973
AC: FLS SS
DATE: APR 18 2016