

THESE DRAWINGS AND ALL MATERIAL CONTAINED HEREIN ARE THE PROPERTY OF SILVERCREEK INDUSTRIES, INC (SCI Inc) AND SHALL NOT BE REPRODUCED, COPIED OR OTHERWISE DISPOSED OF DIRECTLY OR INDIRECTLY AND SHALL NOT BE USED IN WHOLE OR IN PART TO ASSIST IN THE MAKING OF OR FOR THE PURPOSE OF FURNISHING ANY INFORMATION FOR THE MAKING OF DRAWINGS, PRINTS, APPARATUS OR PARTS THEREOF WITHOUT THE FULL KNOWLEDGE AND WRITTEN CONSENT OF SCI Inc. ALL PATENTABLE MATERIAL CONTAINED HEREIN AND ORIGINATING WITH SCI Inc SHALL BE THE PROPERTY OF SCI Inc.

SILVER CREEK INDUSTRIES, INC.



SILVER CREEK

2830 BARRETT AVE. PERRIS, CALIFORNIA 92571
PHONE: 951-943-5393 FAX: 951-943-2211

PROJECT NAME:

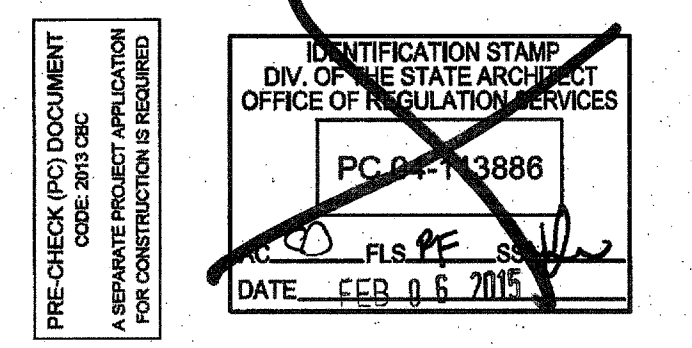
SHEET TITLE:

SWITCHBACK RAMP PLAN

ARCHITECT OF RECORD
SUBMISSION DATE

PROJECT SPECIFIC STATE AGENCY APPROVAL

ORIGINAL PC STATE AGENCY APPROVAL



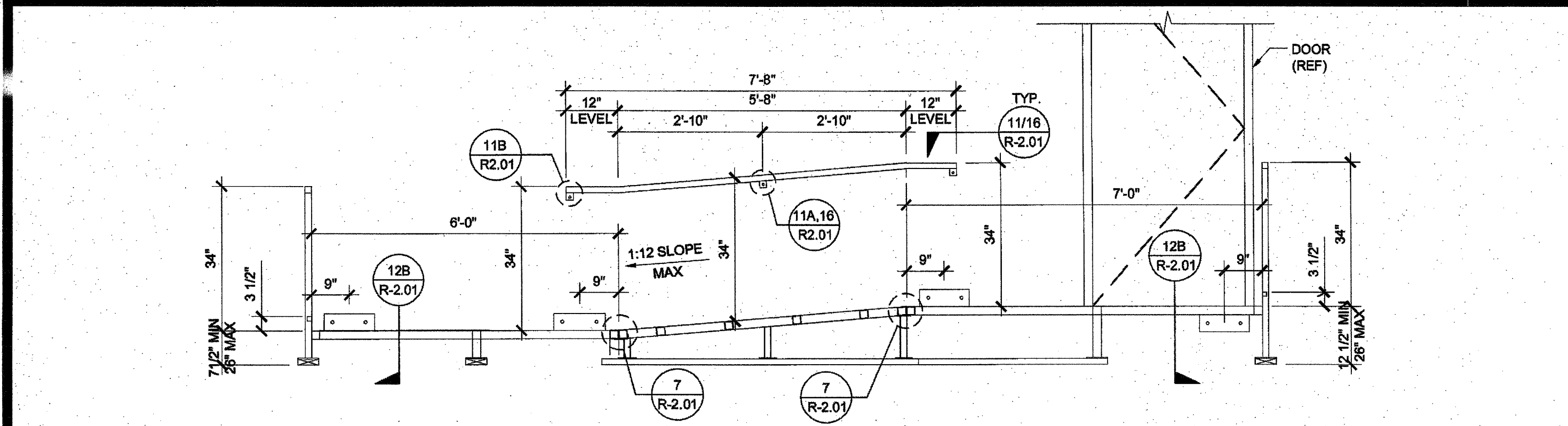
REVISIONS

SILVER CREEK INDUSTRIES
24' x 40' PC

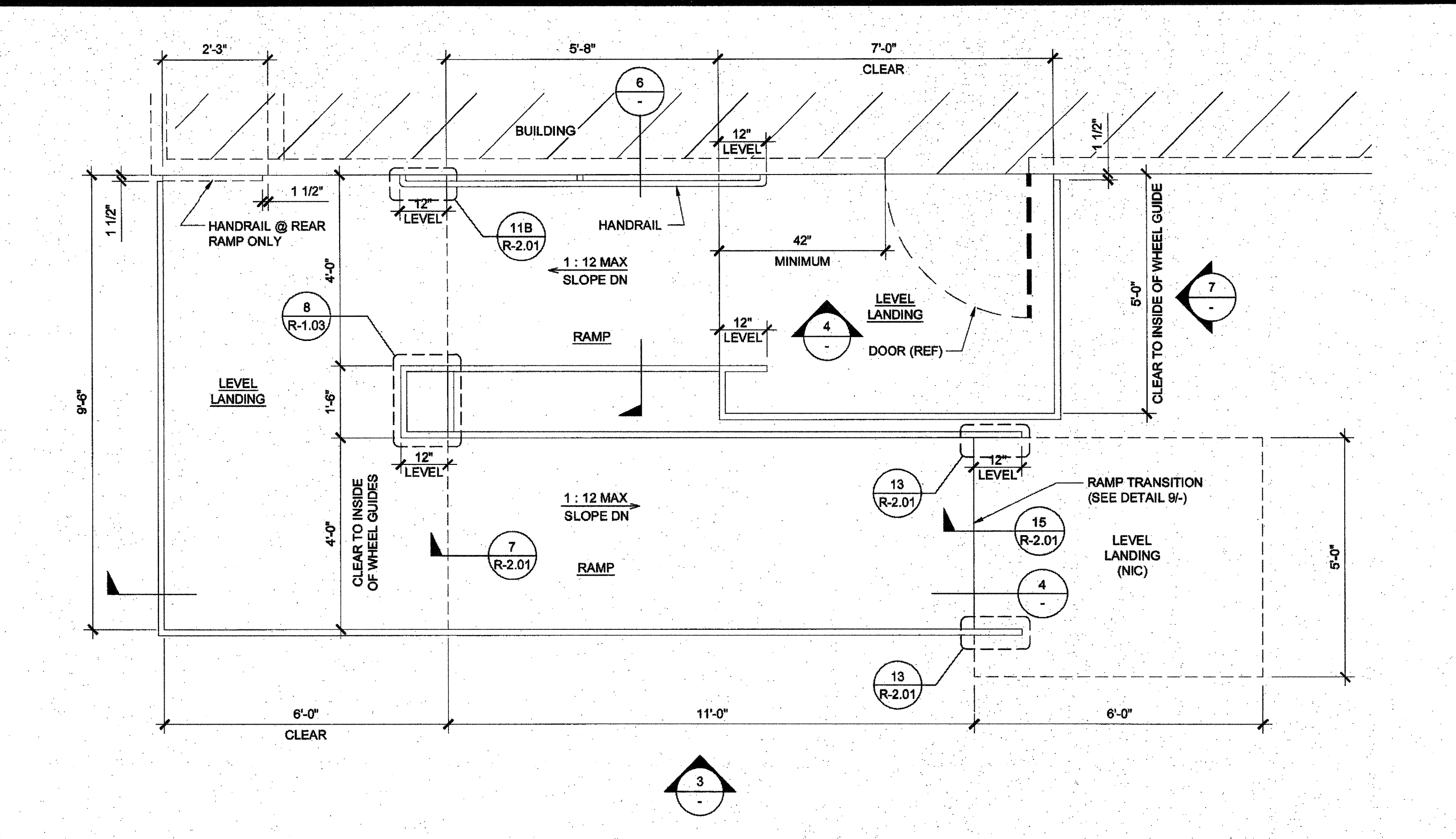
PROJECT NO:
DRAWN BY:
SCALE: AS NOTED
DATE: 09-10-14

P.C. SHEET NUMBER

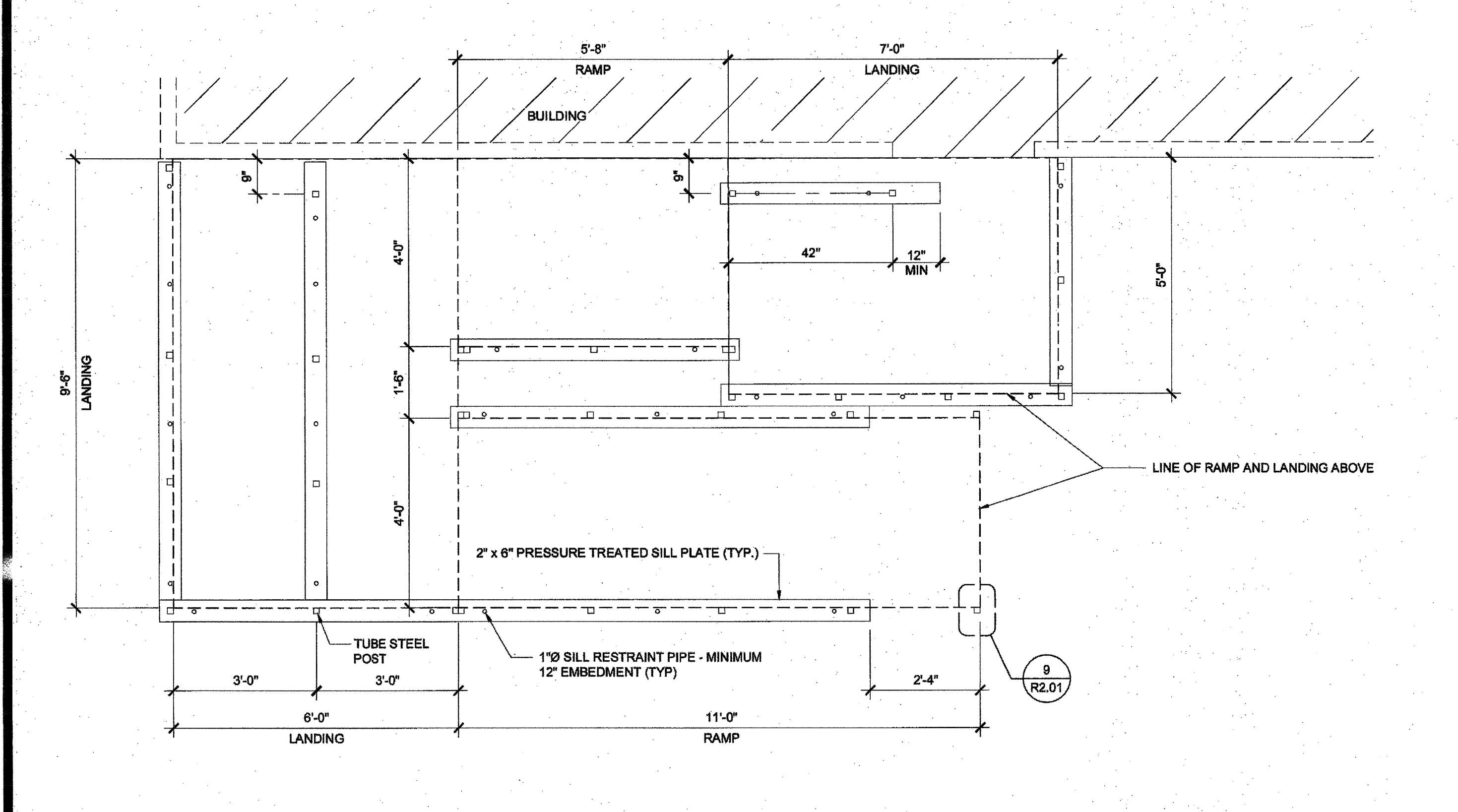
R-1.05



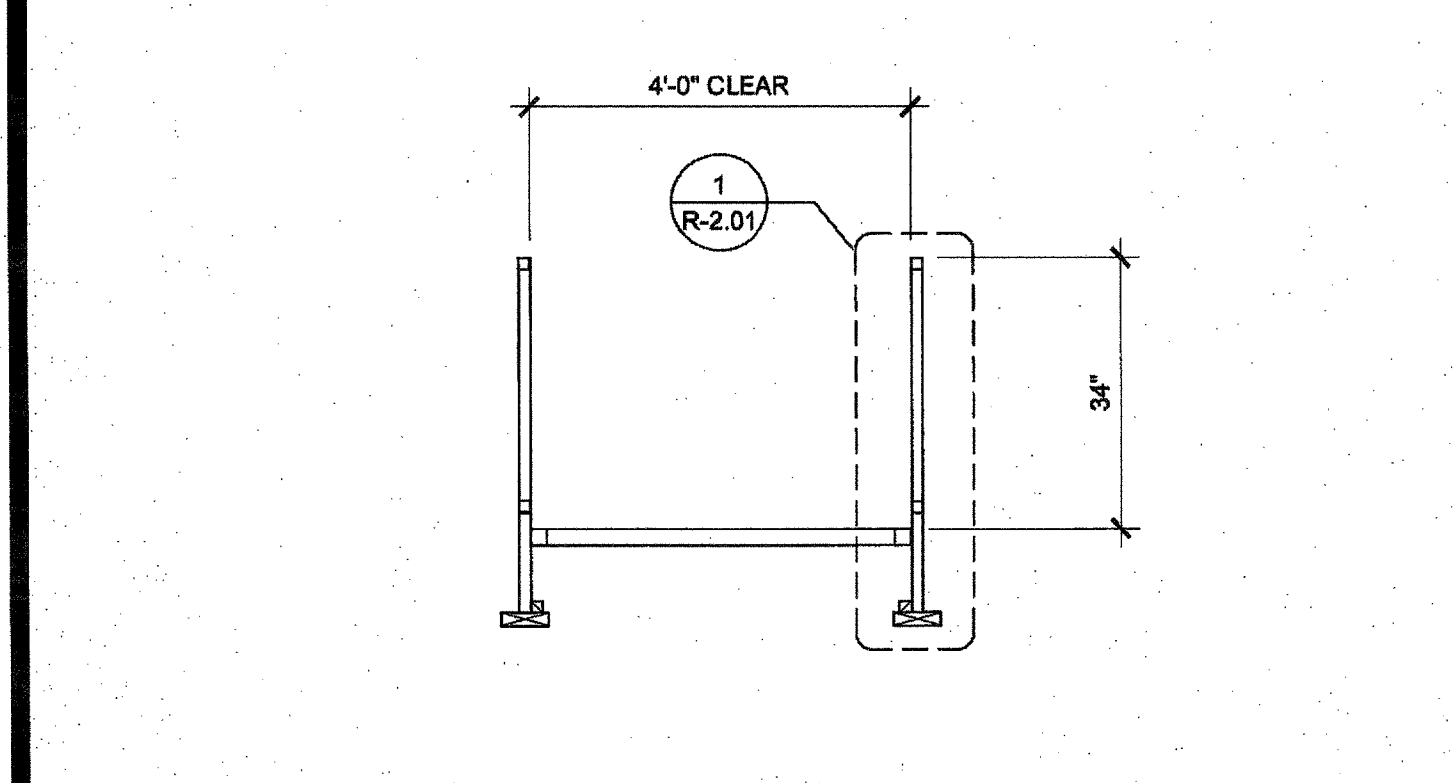
SECTION AT RAMP AND LANDING SCALE: 1/2" = 1'-0" 4



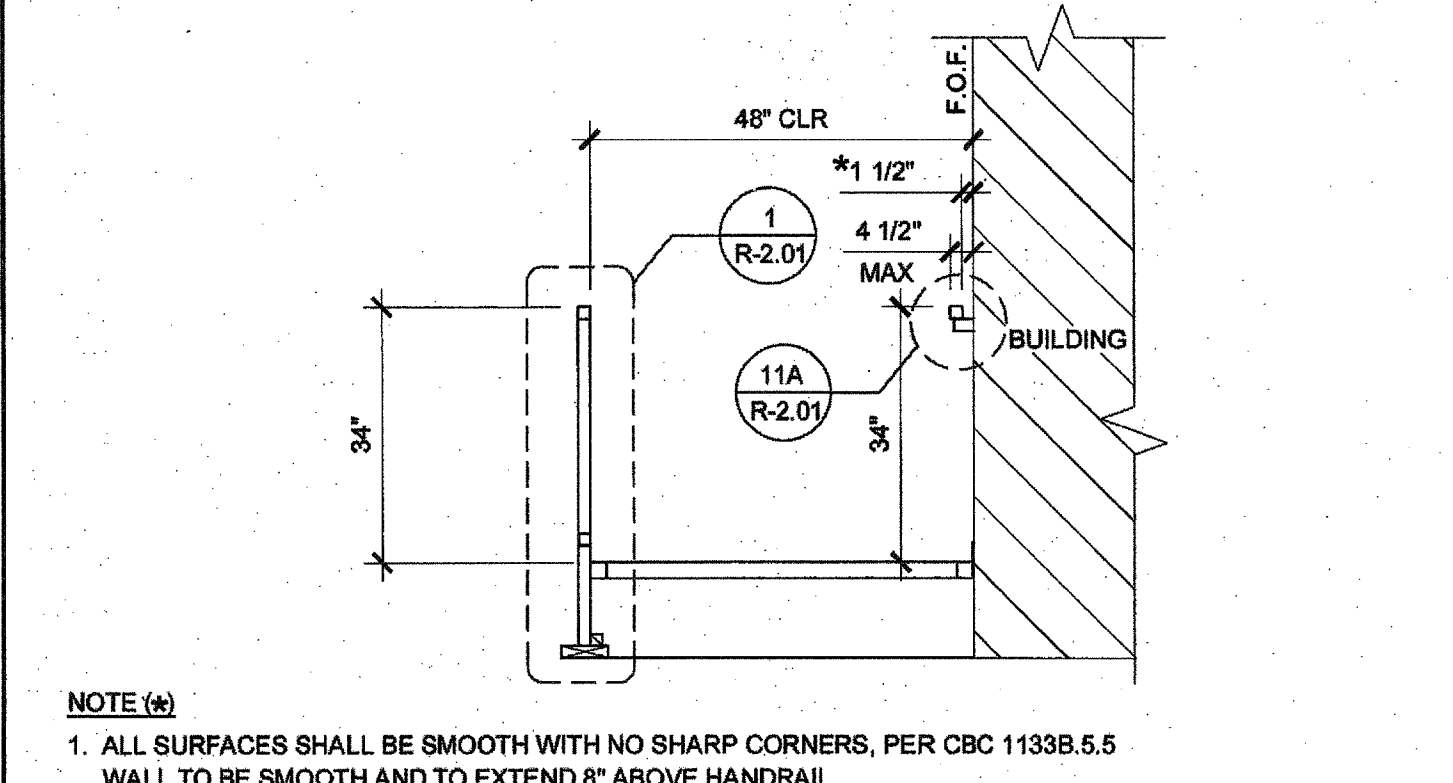
RAMP AND LANDING AT BUILDING SCALE: 1/2" = 1'-0" 1



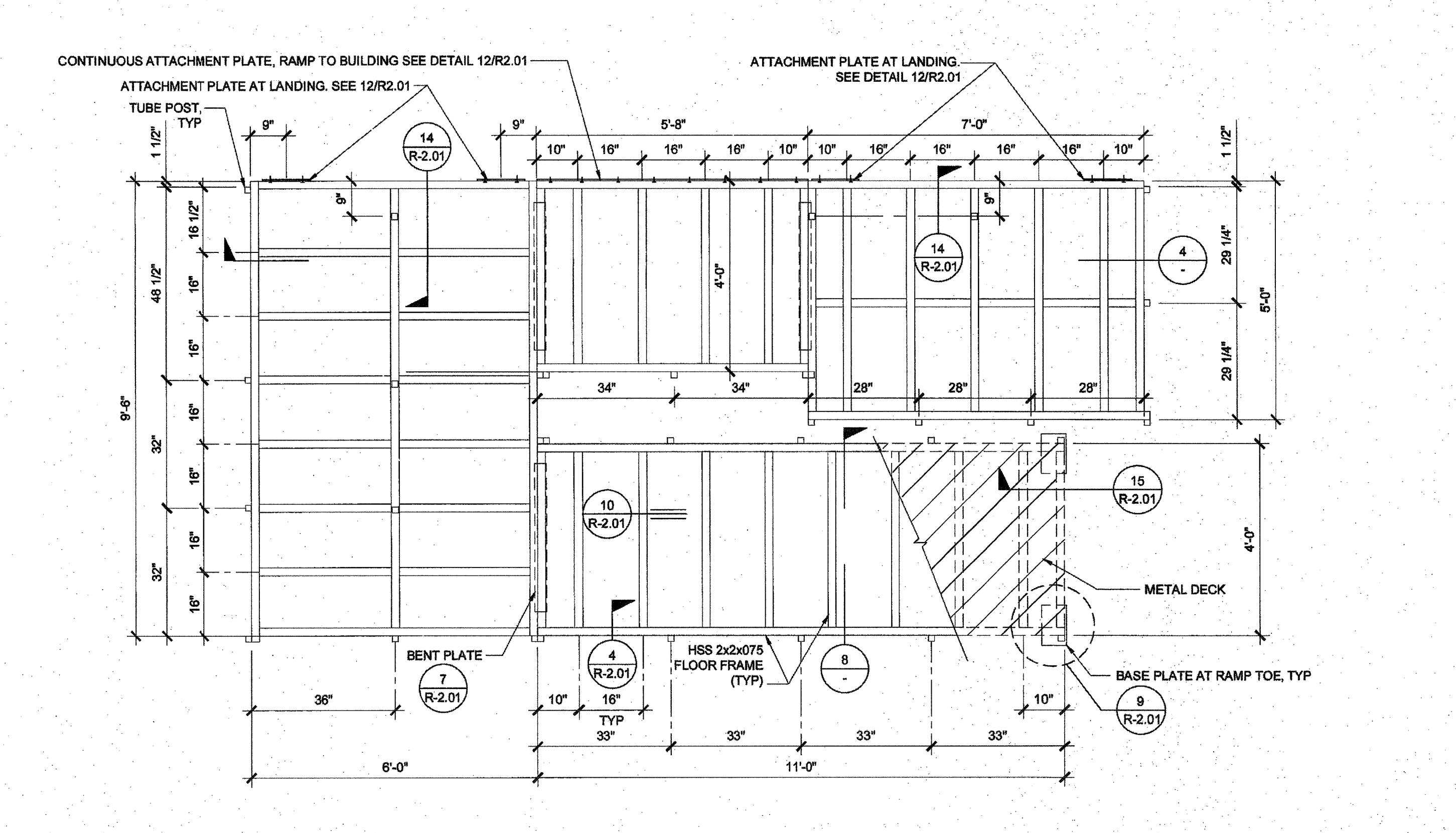
SILL PLAN FOR RAMP AND LANDING SCALE: 1/2" = 1'-0" 5



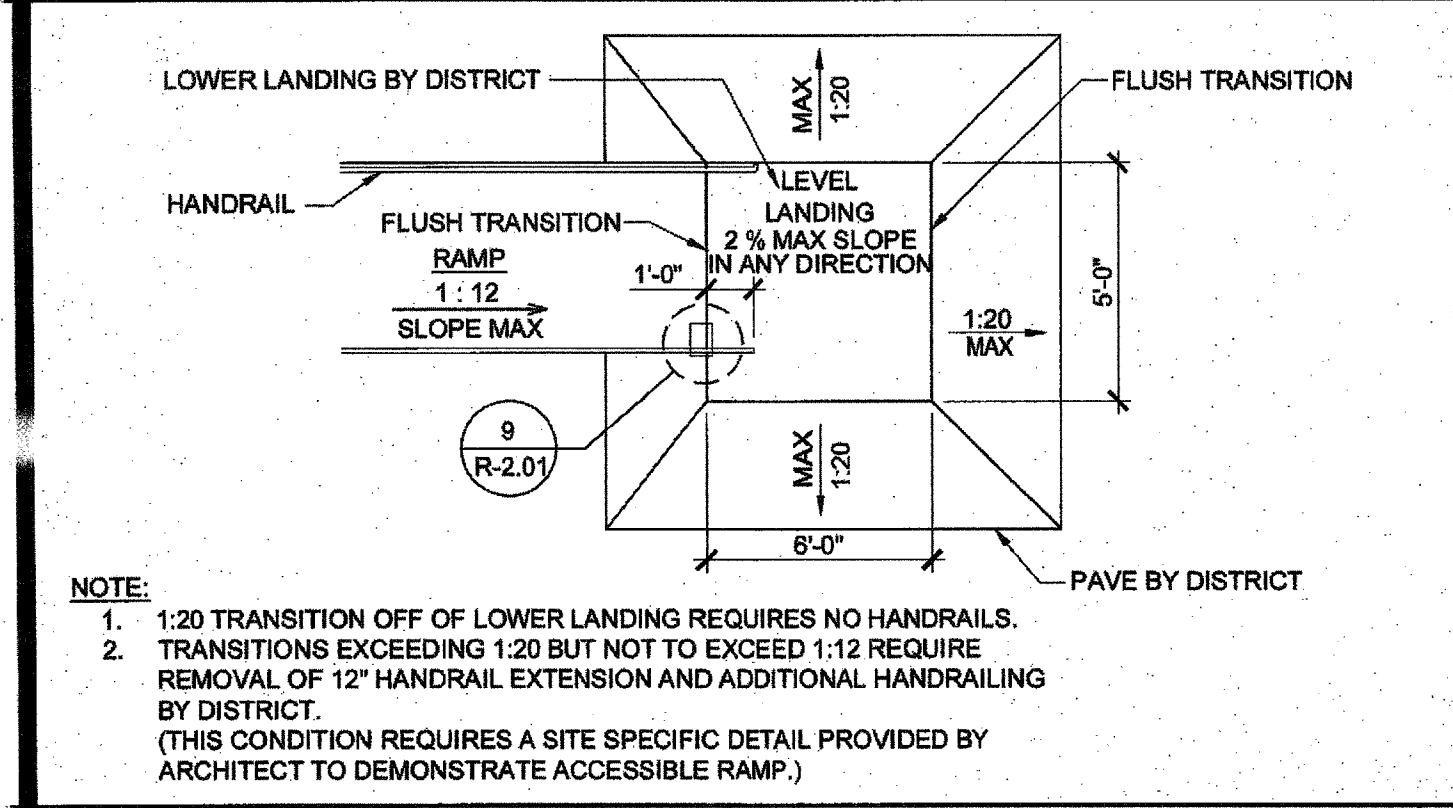
SECTION AT RAMP SCALE: 1/2" = 1'-0" 8



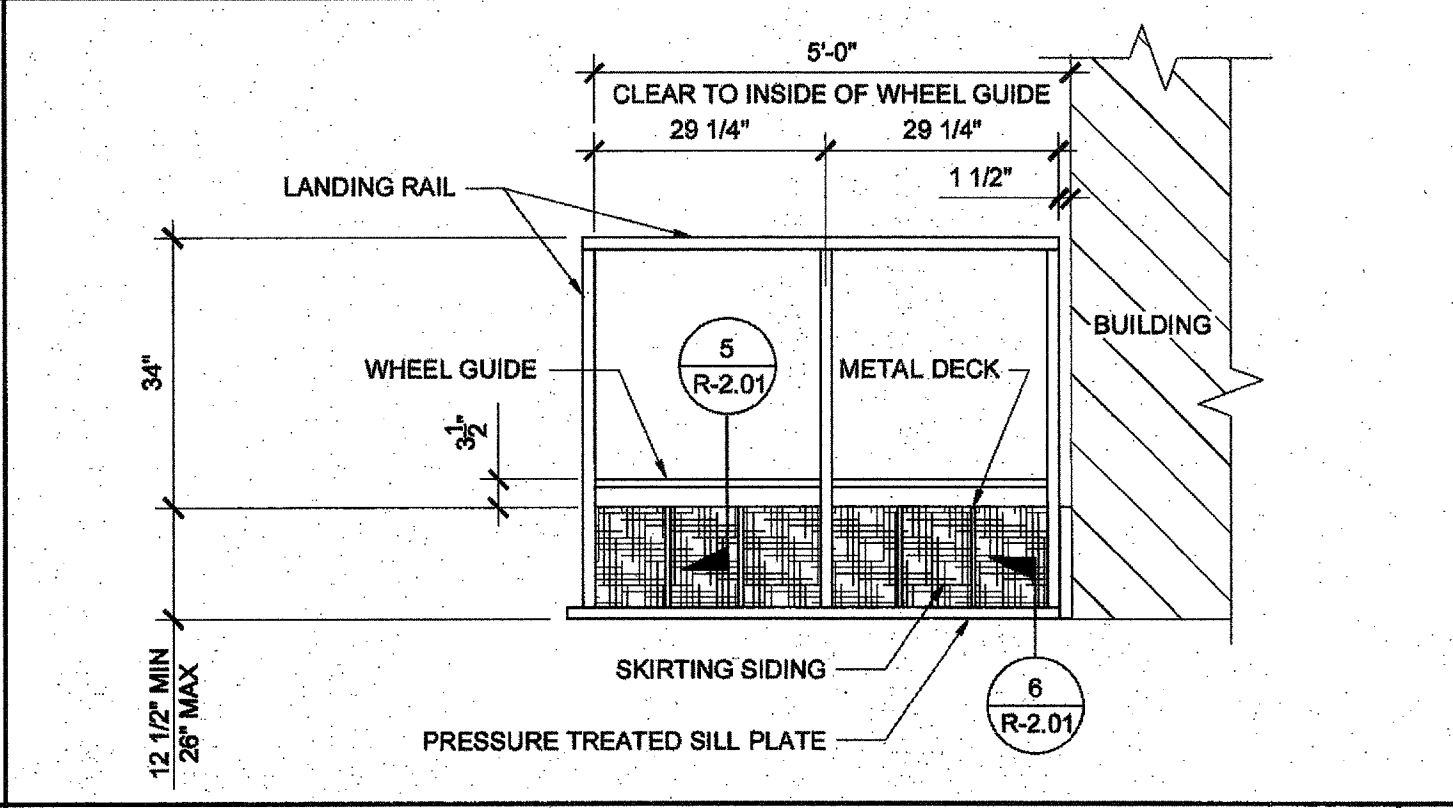
SECTION AT RAMP SCALE: 1/2" = 1'-0" 6



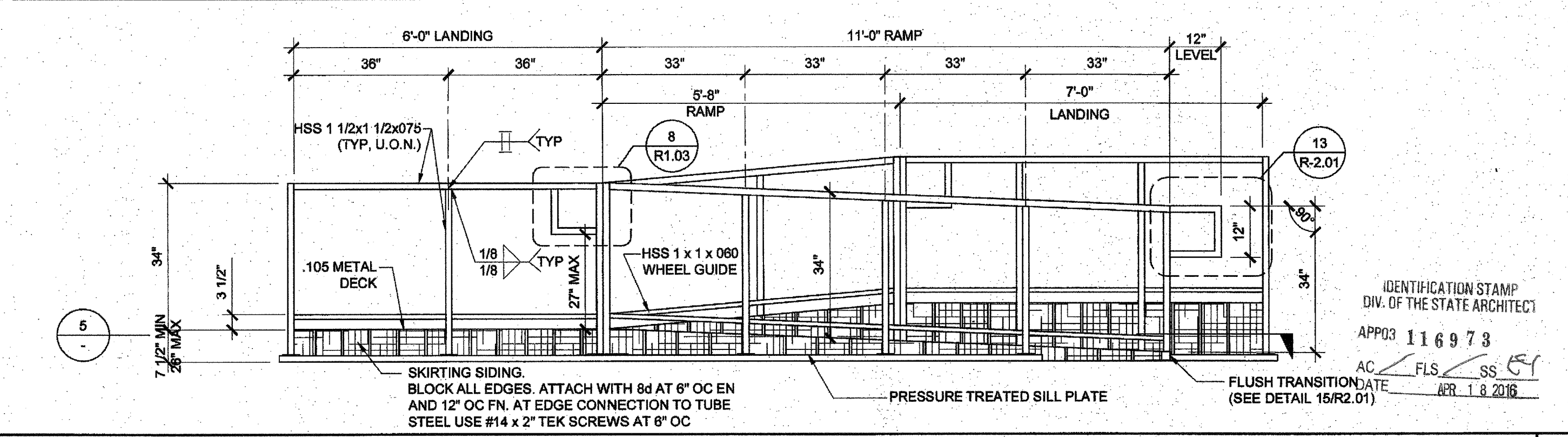
RAMP FRAMING PLAN SCALE: 1/2" = 1'-0" 2



RAMP TRANSITION SCALE: NTS 9



LANDING ELEVATION SCALE: 1/2" = 1'-0" 7



RAMP AND LANDING ELEVATION SCALE: 1/2" = 1'-0" 3

NOTE (a)
1. ALL SURFACES SHALL BE SMOOTH WITH NO SHARP CORNERS, PER CBC 11338.5.5
WALL TO BE SMOOTH AND TO EXTEND 8" ABOVE HANDRAIL.

NOTE:
1. 1:20 TRANSITION OFF OF LOWER LANDING REQUIRES NO HANDRAILS.
2. TRANSITIONS EXCEEDING 1:20 BUT NOT TO EXCEED 1:12 REQUIRE REMOVAL OF 12" HANDRAIL EXTENSION AND ADDITIONAL HANDRAILING BY DISTRICT.
(THIS CONDITION REQUIRES A SITE SPECIFIC DETAIL PROVIDED BY ARCHITECT TO DEMONSTRATE ACCESSIBLE RAMP.)

IDENTIFICATION STAMP
DIV. OF THE STATE ARCHITECT
APP03 116973
AC FLS SS
APR 18 2015