

ELECTRICAL PANEL SCHEDULE Room 101A

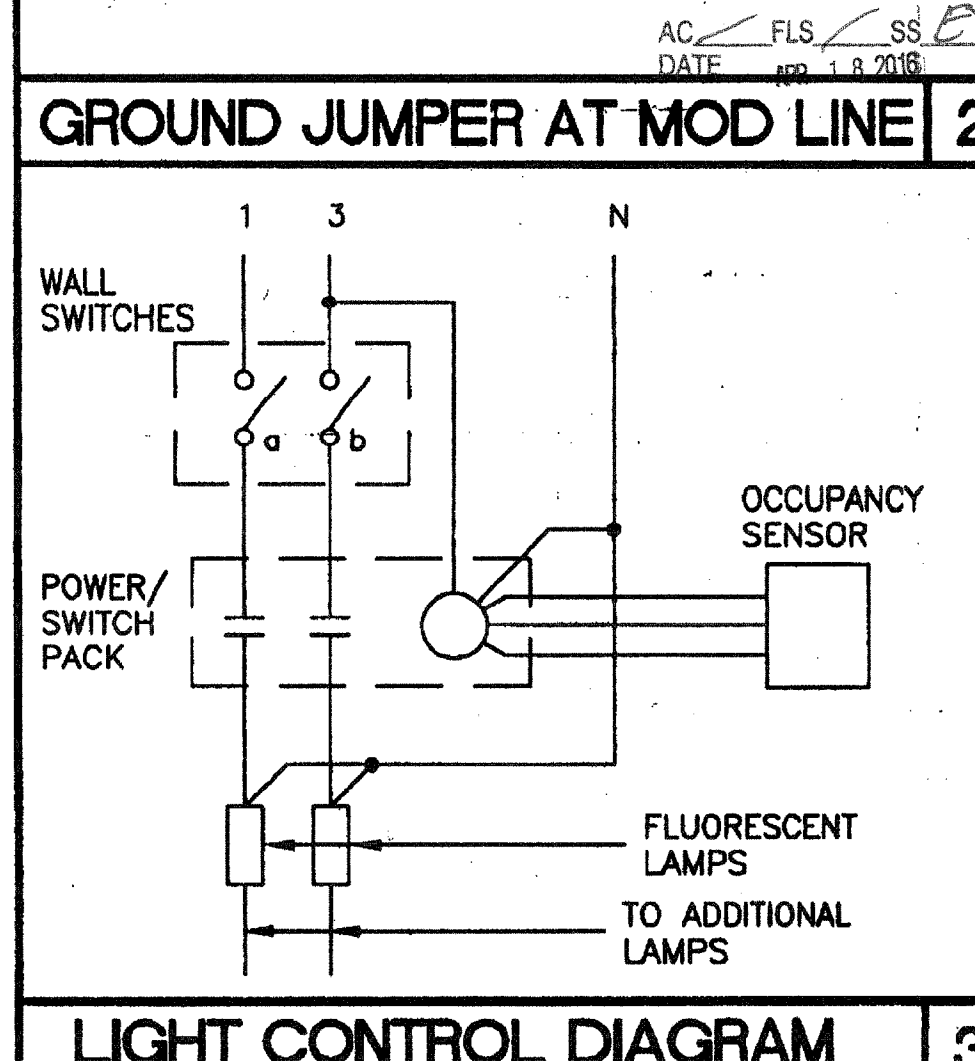
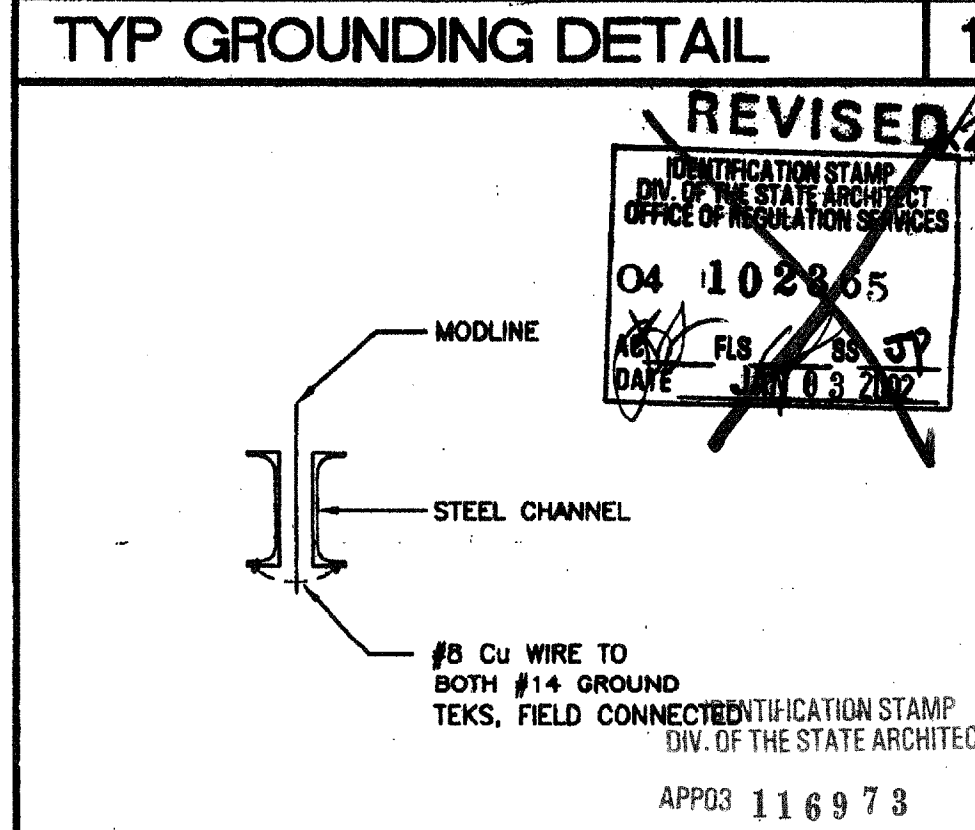
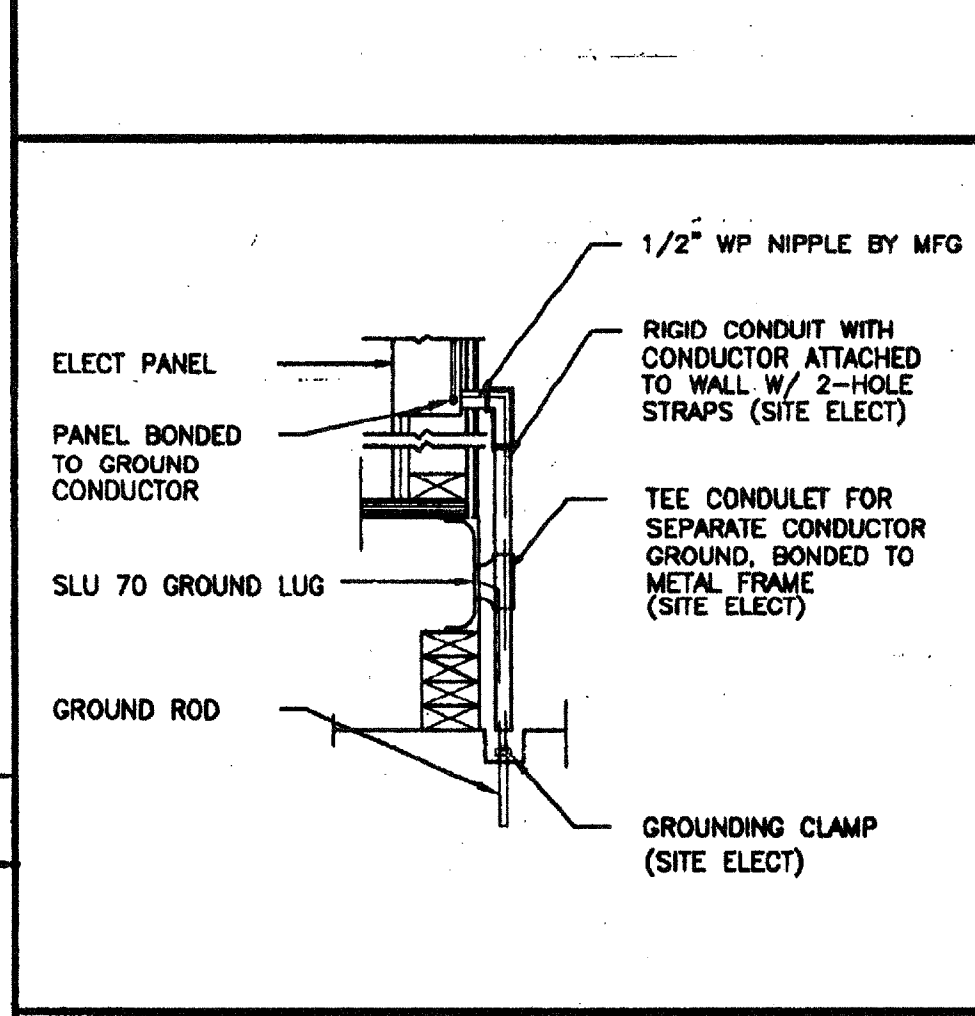
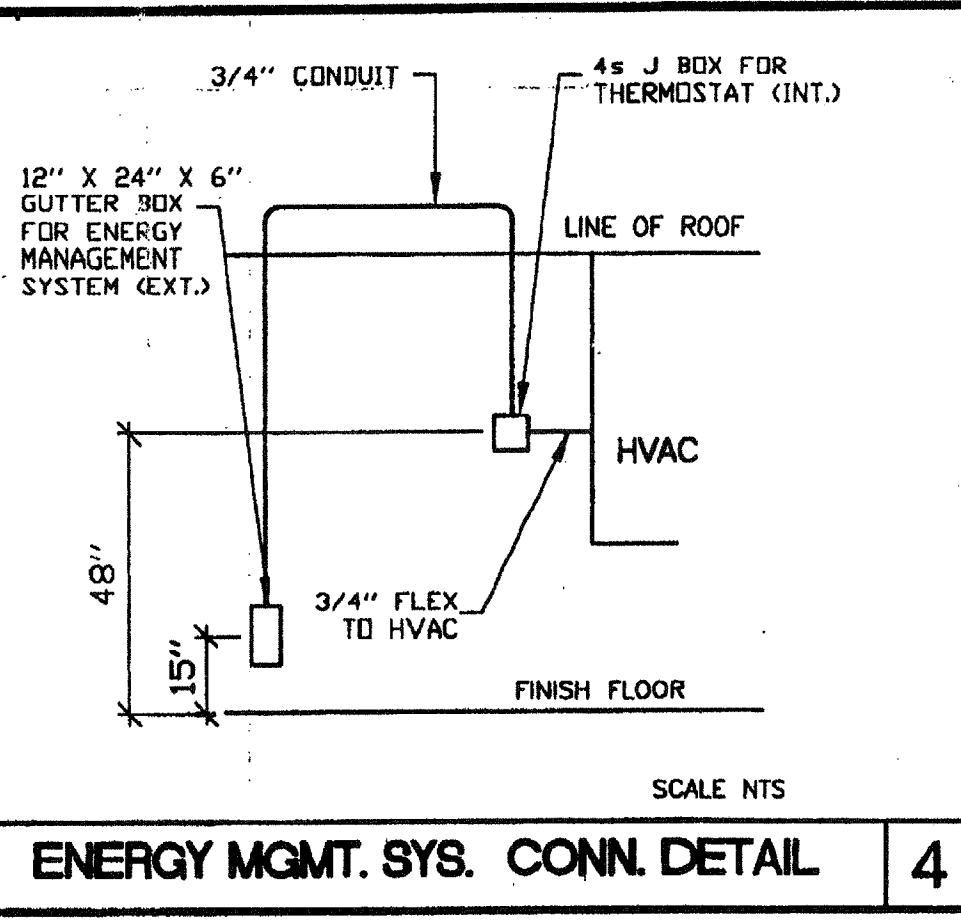
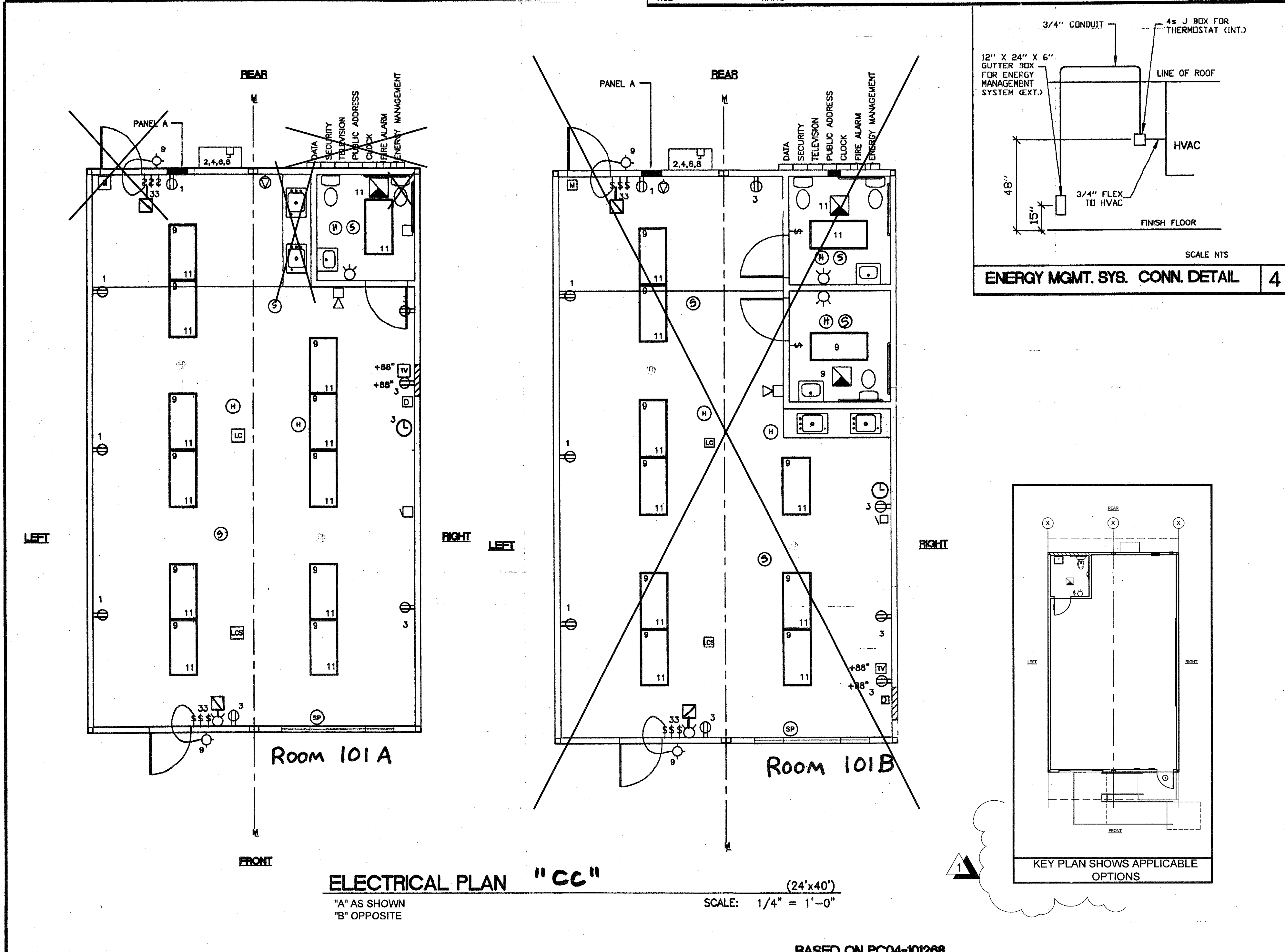
MAIN: 100 AMP	12 POLE	PANEL: A	FEED: REAR	
		LOCATION: REAR/INTERIOR	MOUNTING: FLUSH	
LOAD	WATTS	BREAKER	WATTS	LOAD
RECEPTACLE (4)	720	20 1 1	4080	HVAC (3.5 TON)
RECEPTACLE/CLOCK (5)	900	20 1 3	3120	HVAC (3.5 TON)
	60	1 5		5KW HEAT STRIPS
		7		3120 5KW HEAT STRIPS
INT/EXT LIGHTS (13)	890	20 1 9		
INT. LIGHTS (12)	990	20 1 11		40 FIRE ALARM (DEDICATED)
WATTS/PHASE	A = 8810	1610 1890	7200 7200	B = 9090
TOTAL	17900	WATTS	75	AMPS
NCL =	WATTS			

ELECTRICAL PANEL SCHEDULE Room 101B

MAIN: 100 AMP	12 POLE	PANEL: A	FEED: REAR	
		LOCATION: REAR/INTERIOR	MOUNTING: FLUSH	
LOAD	WATTS	BREAKER	WATTS	LOAD
RECEPTACLE (4)	720	20 1 1	3960	HVAC (3 1/2T)
RECEPTACLE/CLOCK (5)	900	20 1 3	3120	HVAC (3 1/2T)
		1 5		5KW HEAT STRIPS
		7		3120 5KW HEAT STRIPS
INT/EXT LIGHTS (13)	990	20 1 9		
INT. LIGHTS (12)	990	20 1 11		
WATTS/PHASE	A = 8790	1710 1890	7080 7080	B = 8970
TOTAL	17760	WATTS	74	AMPS
NCL =	WATTS			

- ### GENERAL GROUNDING NOTES
- EACH BUILDING SHALL BE SEPARATELY GROUNDING WITH A 3/4" RD. X 8' COPPERCLAD STEEL GROUND ROD, WHERE ROCK BOTTOM IS ENCOUNTERED. ROD SHALL BE DRIVEN AT AN ANGLE NOT TO EXCEED 45 DEGREE'S FROM THE VERTICAL OR SHALL BE BURIED IN A TRENCH THAT IS AT LEAST 30" DEEP (BY SITE ELECTRICAL)
 - TESTING: TEST FOR RESISTANCE TO GROUND. IF RESISTANCE EXCEEDS 25 OHMS, INSTALL ADDITIONAL GROUND RODS SEPARATED AT LEAST 8'-0" UNTIL RESISTANCE IS REDUCED TO 25 OHMS OR LESS. (BY SITE ELECTRICAL)
 - APPROVAL OF THIS PLAN DOES NOT CONSTITUTE APPROVAL OF THIS FIRE ALARM FOR ALL SITES. THE FIRE ALARM SYSTEM AND/OR COMPONENTS MAYBE REQUIRED TO BE CHANGED DUE TO SITE LOCATION, EXISTING CONDITIONS OR INCOMPATIBLE COMPONENTS.
 - GROUNDING TEST SHALL BE DONE IN THE PRESENCE OF THE PROJECT INSPECTOR. ALL GROUNDING SHALL BE IN ACCORDANCE WITH CEC ARTICLE 250.

- ### ELECTRICAL LEGEND
- RECESSED 2' X 4' FLUORESCENT 4-LAMP WITH MAGNETER TRIAC FOUR LAMP HIGH POWER FACTOR BALLAST, PRISMATIC ACRYLIC LENS OF 0.125" MINIMUM THICKNESS IN A DOOR FRAME WITH POSITIVE HINGE AND LATCHES, DIE FORMED HEAVY GAUGE STEEL BODY, BAKED WHITE ENAMEL FINISH, FIXTURE 4 1/2" DEPTH MINIMUM AND FOUR 32 WATT, 48" T-8 LAMPS PRUDENTIAL CAT# PB824-48CIE-PRA.125-SW-120 OR EQUAL BY LITHONIA OR METALUX
 - 50 WATT HIGH PRESSURE SODIUM WALL MOUNTED VANDAL RESISTANT FIXTURE WITH PHOTO CONTROL MOUNT AT +86" AFF
 - SWITCH AT +48" AFF
 - 3WAY SWITCH AT +48" AFF UON
 - DUPLEX WALL RECEPTACLE 15A 125V 3-WIRE AT +18" AFF UON
 - HVAC UNIT (HV)
 - 4SD J-BOX FOR FIRE ALARM PULL STATION AT +48" AFF, 3/4" CO TO PULLSTRING
 - 4SD J-BOX FOR FIRE ALARM STROBE AT +80" AFF, 3/4" CO TO PULLSTRING
 - 4SD J-BOX FOR FIRE ALARM HORN AT +98" AFF, 3/4" CO TO PULLSTRING
 - ELECTRICAL PANEL AT +80" AFF TO CENTERLINE 1 1/4" POWER NIPPLE POC, GND JUMPER BY SITE ELECT
 - 4SD J-BOX FOR CLOCK AT +93" AFF, 3/4" CO STUB IN ATTIC, PULLSTRING
 - 4SD J-BOX FOR HEAT DETECTOR (ATTIC)
 - 4SD J-BOX FOR SMOKE DETECTOR - CEILING MOUNTED
 - 4s J-BOX FOR HVAC UNIT BYPASS AT +48" AFF
 - 4s J-BOX FOR FIRE ALARM HEAT DETECTOR, MOUNTED IN ATTIC
 - 12"W X 24" HT. X 6"D WP PULL BOX PROVIDE NAME PLATES AS LISTED ON ELECT. PLANS. +15" AFF
 - 4s J-BOX FOR BUZZER AT +93" AFF, 3/4" CO STUB IN ATTIC, PULLSTRING
 - 4s J-BOX FOR PUBLIC ADDRESS SPEAKER, WALL MOUNTED. 3/4" CO TO +80" AFF
 - 4s J-BOX FOR PUBLIC ADDRESS CALL SWITCH AT +48" AFF, 3/4" CO TO PA GUTTER BOX
 - 4s J-BOX FOR SECURITY MOTION DETECTOR OUTLET, CEILING MOUNTED. 3/4" CO TO SECURITY GUTTER BOX
 - LIGHT CONTROL OCCUPANCY SENSOR CEILING MOUNTED 3/4" CO TO LCA
 - LIGHT CONTROL TWO POLE POWER/SWITCH PACK MOUNTED IN ATTIC. 3/4" CO TO LIGHTING CIRCUIT
 - 4s J BOX FOR TELEVISION +86" AFF, 3/4" CO TO TV GUTTER BOX
 - J-BOX FOR FUTURE DATA. +18" AFF 3/4" C/O STUB IN ATTIC. PULLSTRING
 - 100 CFM EXHAUST FAN



- ### NOTES
- SCHOOL EQUIPMENT ANCHORAGE
 THE FOLLOWING IS FOR THE ARCHITECTS INFORMATION ONLY:
 THE SEISMIC ANCHORAGE OF ELECTRICAL EQUIPMENT SHALL CONFORM TO CCR TITLE 24, SECTION 1632A AND TABLE 164-3. ANCHORAGE DETAILS FOR ROOF/FLOOR MOUNTED EQUIPMENT WEIGHING LESS THAN 400 LBS & HUNG EQUIPMENT WEIGHING LESS THAN 20 LBS MAY BE OMITTED FROM THE PLANS.
 ALL ELECTRICAL EQUIPMENT SHALL BE BRACED OR ANCHORED TO RESIST A HORIZONTAL FORCE ACTING IN ANY DIRECTION USING THE FOLLOWING CRITERIA:

EQUIPMENT ON GRADE	20% OF OPERATING WEIGHT
EQUIPMENT ON STRUCTURE	30% OF OPERATING WEIGHT

 FOR FLEXIBLY MOUNTED EQUIPMENT USE 4 TIMES THE ABOVE VALUES, AND FOR SIMULTANEOUS VERTICAL FORCE USE 1/3 TIMES THE HORIZONTAL FORCE.
 THE ABOVE VALUES ARE FOR AN IMPORTANCE FACTOR, I = 1.0 AND SEISMIC ZONE, Z = 4
 WHERE ANCHORAGE DETAILS ARE NOT SHOWN ON THE DRAWINGS THE FIELD INSTALLATION SHALL BE SUBJECT TO THE APPROVAL OF THE ARCHITECT AND THE FIELD ENGINEER OF THE OFFICE OF THE STATE ARCHITECT.
 *2 SMOKE AND HEAT DETECTORS SHOWN ARE FOR OPTIONAL AUTOMATIC DETECTION. IF ELECTED AS AN OPTION MODTECH WILL PROVIDE 4SD BOXES AND 3/4" CO MOUNTED ON UNDERSIDE OF ROOF PURLINS. DEVICES PROVIDED AND INSTALLED BY OTHERS.

REVISIONS

NO.	DESCRIPTION	DATE
1	KEY PLAN SHOWS APPLICABLE OPTIONS OUT OF PREVIOUSLY BUILT BLDGS.	12/21/15

Electrical Engineer's Seal
 Mechanical Engineer's Seal
 Structural Engineer's Seal
 ARCHITECT'S SEAL
 MODTECH INC. 2830 BARRETT AVENUE PERRIS, CALIF. 92572
 PH (909) 943-4014 FAX (909) 940-0427

PROJECT NUMBER: 3883
 CHINO
 CLASS LEASING
 MODTECH INC. 1999
 DATE: 6/28/01
 CHECKED BY:
 DATE:
 MODTECH Index No.

ELECTRICAL PLAN 24'x40'
E1.01C

FILE PATH: 2440-E1.01.DWG PROJECT NO: 3883 PC-04-101268