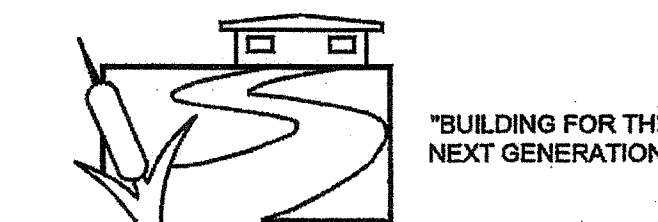


THESE DRAWINGS AND ALL MATERIAL CONTAINED HEREIN ARE THE PROPERTY OF SILVERCREEK INDUSTRIES, INC (SCI INC) AND SHALL NOT BE REPRODUCED, COPIED OR OTHERWISE DISPOSED OF DIRECTLY OR INDIRECTLY AND SHALL NOT BE USED IN WHOLE OR IN PART TO ASSIST IN THE MAKING OF OR FOR THE PURPOSE OF FURNISHING ANY INFORMATION FOR THE MAKING OF DRAWINGS, PRINTS, APPARATUS OR PARTS THEREOF WITHOUT THE FULL KNOWLEDGE AND WRITTEN CONSENT OF SCI INC. ALL PATENTABLE MATERIAL CONTAINED HEREIN AND ORIGINATING WITH SCI INC SHALL BE THE PROPERTY OF SCI INC.

SILVER CREEK INDUSTRIES, INC.



SILVER CREEK

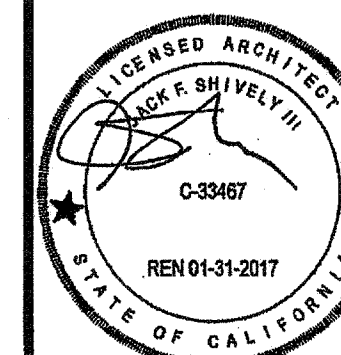
2830 BARRETT AVE PERRIS, CALIFORNIA 92571
PHONE: 951-943-5393 FAX: 951-943-2211

PROJECT NAME:

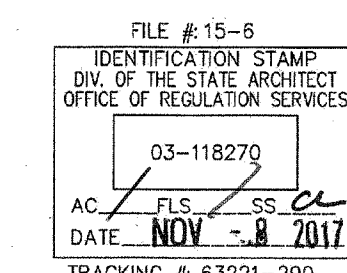
24x40 STOCKPILE OFFICE BUILDING

SHEET TITLE:

MECHANICAL PLAN WALL MOUNT
24' x 40'

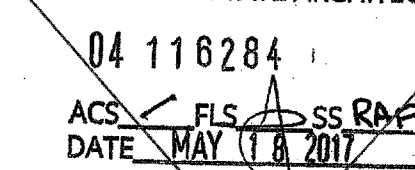


ARCHITECT OF RECORD
SUBMISSION DATE

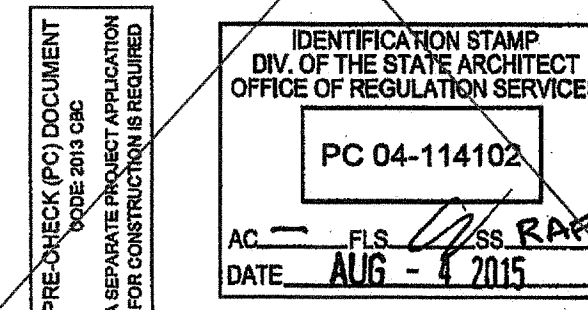


PROJECT SPECIFIC STATE AGENCY APPROVAL

IDENTIFICATION STAMP
DIV. OF THE STATE ARCHITECT



ORIGINAL PC STATE AGENCY APPROVAL



REVISIONS

SILVER CREEK INDUSTRIES
24' x 40' PC - 2:12 PITCH

PROJECT NO:
DRAWN BY:
SCALE: AS NOTED
DATE: 01-30-15
P.C. SHEET NUMBER

M-1.01

9 EER

SINGLE PACKAGE VERTICAL HEAT PUMP SCHEDULE

	STANDARD	OPTION #1	OPTION #2
TAG	HP-1	HP-1	HP-1
NOMINAL TONNAGE	4.0 TONS	5 TONS	3.5 TONS
MANUFACTURER	BAR	BAR	BAR
MODEL#	W48H2-A04	W48H2-A05	W42H2-A05
CFM	150	170	140
STATIC PRESSURE	0.3	0.3	0.3
DRIVE	DIRECT	DIRECT	DIRECT
MCA	58	57	57
MOCP	60	60	60
VOLTAGE	208/230-1	208/230-1	208/230-1
WIRE SIZE (PWR/GRND)	#6/#10	#4/#8	#6/#10
DESIGN RETURN AIR (DBWB)	80/67	80/67	80/67
SENSIBLE COOLING @ 95° F	35,800	39,600	32,700
TOTAL COOLING @ 95° F	46,000	54,000	42,000
HEATING CAP. BTUH @ 47° F	44,000	54,000	42,000
HEATING CAP. BTUH @ 17° F	26,000	32,000	23,000
OPERATING WEIGHT	550#	550#	550#
EER	9.00	9.00	9.00
COP @ 47° F	3.00	3.00	3.00
COP @ 17° F	2.00	2.00	2.00

NOTES:
PROVIDE SET-BACK THERMOSTAT.
MODEL# SHOWN IS FOR UNIT WITH OPTIONAL AUXILIARY HEAT STRIP, IF HEAT STRIP IS NOT USED THE MCA AND MOCP MUST BE REVISED. HEAT STRIPS LARGER THAN THE SIZE SHOWN MAY NOT BE USED.
MINIMUM OUTSIDE AIR SHALL BE NO LESS THAN 15 CFM PER EXPECTED OCCUPANT LOAD.
THE UNIT SHALL UTILIZE DEMAND CONTROL VENTILATION, THE CO2 SENSOR SHALL BE LOCATED SO THAT IT IS NOT EXPECTED TO BE OBSTRUCTED BY FURNITURE OR EQUIPMENT AND SHALL BE INSTALLED NO LESS THAN 36" AFF AND NO MORE THAN 72" AFF.
AIR HANDLERS WITH OTHER VOLTAGES SHALL BE ACCEPTABLE.
AIR HANDLERS OTHER THAN THE MAKE AND MODEL LISTED ABOVE SHALL BE ACCEPTABLE WHEN THE NOMINAL TONNAGE DOES NOT EXCEED 5 TONS AND THE EER AND COP VALUES ARE NO LESS THAN THOSE SHOWN ABOVE.

10 EER

SINGLE PACKAGE VERTICAL HEAT PUMP SCHEDULE

	STANDARD	OPTION #1	OPTION #2
TAG	HP-1	HP-1	HP-1
NOMINAL TONNAGE	4.0 TONS	5 TONS	3.5 TONS
MANUFACTURER	BAR	BAR	BAR
MODEL#	S48H2-A05	S61H2-A05	S42H2-A04
CFM	1400	1450	1250
STATIC PRESSURE	0.2	0.2	0.15
DRIVE	DIRECT	DIRECT	DIRECT
MCA	65	69	55
MOCP	70	80	60
VOLTAGE	208/230-1	208/230-1	208/230-1
WIRE SIZE (PWR/GRND)	#6/#10	#4/#8	#6/#10
DESIGN RETURN AIR (DBWB)	80/67	80/67	80/67
SENSIBLE COOLING @ 95° F	34,400	37,900	31,200
TOTAL COOLING @ 95° F	46,000	55,000	41,500
HEATING CAP. BTUH @ 47° F	45,000	52,000	39,000
HEATING CAP. BTUH @ 17° F	26,000	30,000	23,000
OPERATING WEIGHT	550#	580#	550#
EER	10.00	10.40	10.50
COP @ 47° F	3.00	3.00	3.20
COP @ 17° F	2.00	2.00	2.10

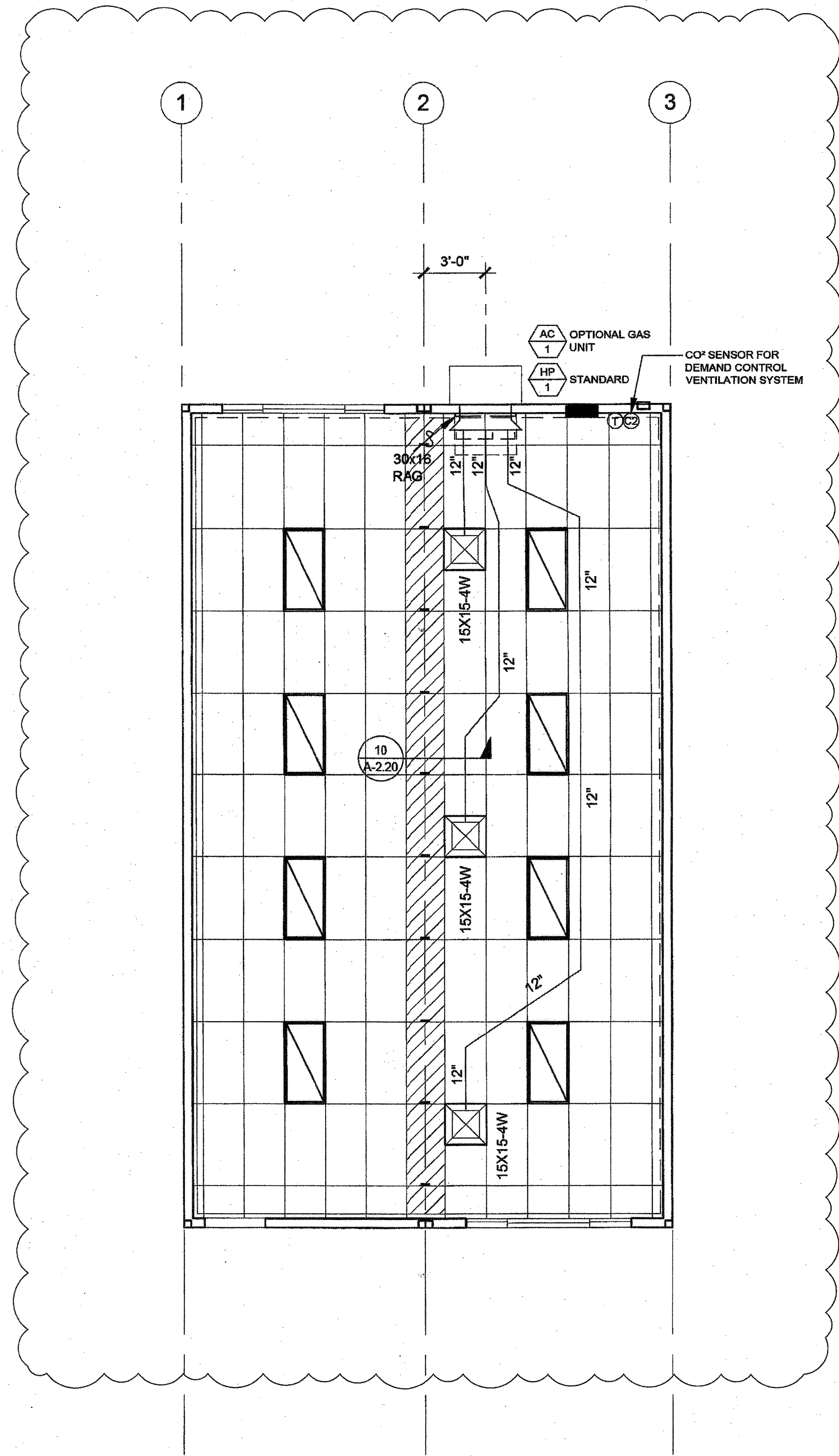
NOTES:
PROVIDE SET-BACK THERMOSTAT.
MODEL# SHOWN IS FOR UNIT WITH OPTIONAL AUXILIARY HEAT STRIP, IF HEAT STRIP IS NOT USED THE MCA AND MOCP MUST BE REVISED. HEAT STRIPS LARGER THAN THE SIZE SHOWN MAY NOT BE USED.
MINIMUM OUTSIDE AIR SHALL BE NO LESS THAN 15 CFM PER EXPECTED OCCUPANT LOAD.
THE UNIT SHALL UTILIZE DEMAND CONTROL VENTILATION, THE CO2 SENSOR SHALL BE LOCATED SO THAT IT IS NOT EXPECTED TO BE OBSTRUCTED BY FURNITURE OR EQUIPMENT AND SHALL BE INSTALLED NO LESS THAN 36" AFF AND NO MORE THAN 72" AFF.
AIR HANDLERS WITH OTHER VOLTAGES SHALL BE ACCEPTABLE.
AIR HANDLERS OTHER THAN THE MAKE AND MODEL LISTED ABOVE SHALL BE ACCEPTABLE WHEN THE NOMINAL TONNAGE DOES NOT EXCEED 5 TONS AND THE EER AND COP VALUES ARE NO LESS THAN THOSE SHOWN ABOVE.

9 EER (GAS ALTERNATE)

SINGLE PACKAGE VERTICAL AIR CONDITIONER WITH GAS FURNACE

	STANDARD	OPTION #1	OPTION #2
TAG	AC-1	AC-1	AC-1
NOMINAL TONNAGE	4.0 TONS	5 TONS	3.5 TONS
MANUFACTURER	BAR	BAR	BAR
MODEL#	W48G2-AXB	W60G2-AXB	W42G2-AXB
CFM	1600	1750	1300
STATIC PRESSURE	0.2	0.2	0.2
DRIVE	DIRECT	DIRECT	DIRECT
MCA	38	40	32
MOCP	50	60	50
VOLTAGE	208/230-1	208/230-1	208/230-1
WIRE SIZE (PWR/GRND)	#6/#10	#6/#10	#6/#10
DESIGN RETURN AIR (DBWB)	80/67	80/67	80/67
SENSIBLE COOLING @ 95° F	35,800	40,700	30,500
TOTAL COOLING @ 95° F	46,000	57,000	40,500
HEATING INPUT	75,000	75,000	75,000
HEATING OUTPUT	61,500	61,500	61,500
OPERATING WEIGHT	710#	725#	700#
EER	9.7	9.8	9.8
THERMAL EFFICIENCY (TE)	82	82	82

NOTES:
PROVIDE SET-BACK THERMOSTAT.
MINIMUM OUTSIDE AIR SHALL BE NO LESS THAN 15 CFM PER EXPECTED OCCUPANT LOAD.
THE UNIT SHALL UTILIZE DEMAND CONTROL VENTILATION, THE CO2 SENSOR SHALL BE LOCATED SO THAT IT IS NOT EXPECTED TO BE OBSTRUCTED BY FURNITURE OR EQUIPMENT AND SHALL BE INSTALLED NO LESS THAN 36" AFF AND NO MORE THAN 72" AFF.
AIR HANDLERS WITH OTHER VOLTAGES SHALL BE ACCEPTABLE.
AIR HANDLERS OTHER THAN THE MAKE AND MODEL LISTED ABOVE SHALL BE ACCEPTABLE WHEN THE NOMINAL TONNAGE DOES NOT EXCEED 5 TONS AND THE EER AND TE VALUES ARE NO LESS THAN THOSE SHOWN ABOVE.



MECHANICAL PLAN - STANDARD 4 LIGHT CONFIGURATION SCALE: 1/4" = 1'-0" 1

NOT USED 2

NOT USED 3

REFER TO SHEET "M-1.01N" FOR PROJECT SPECIFIC