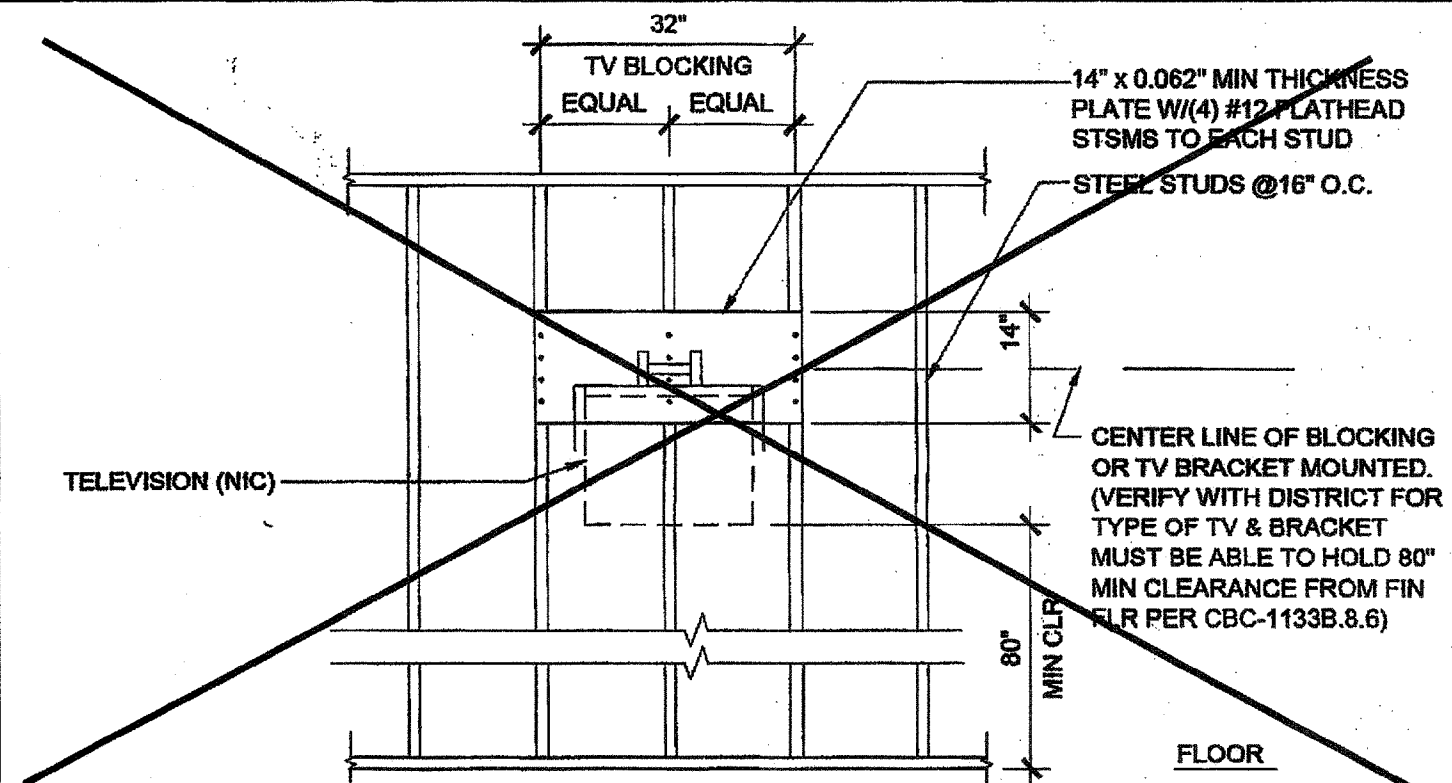
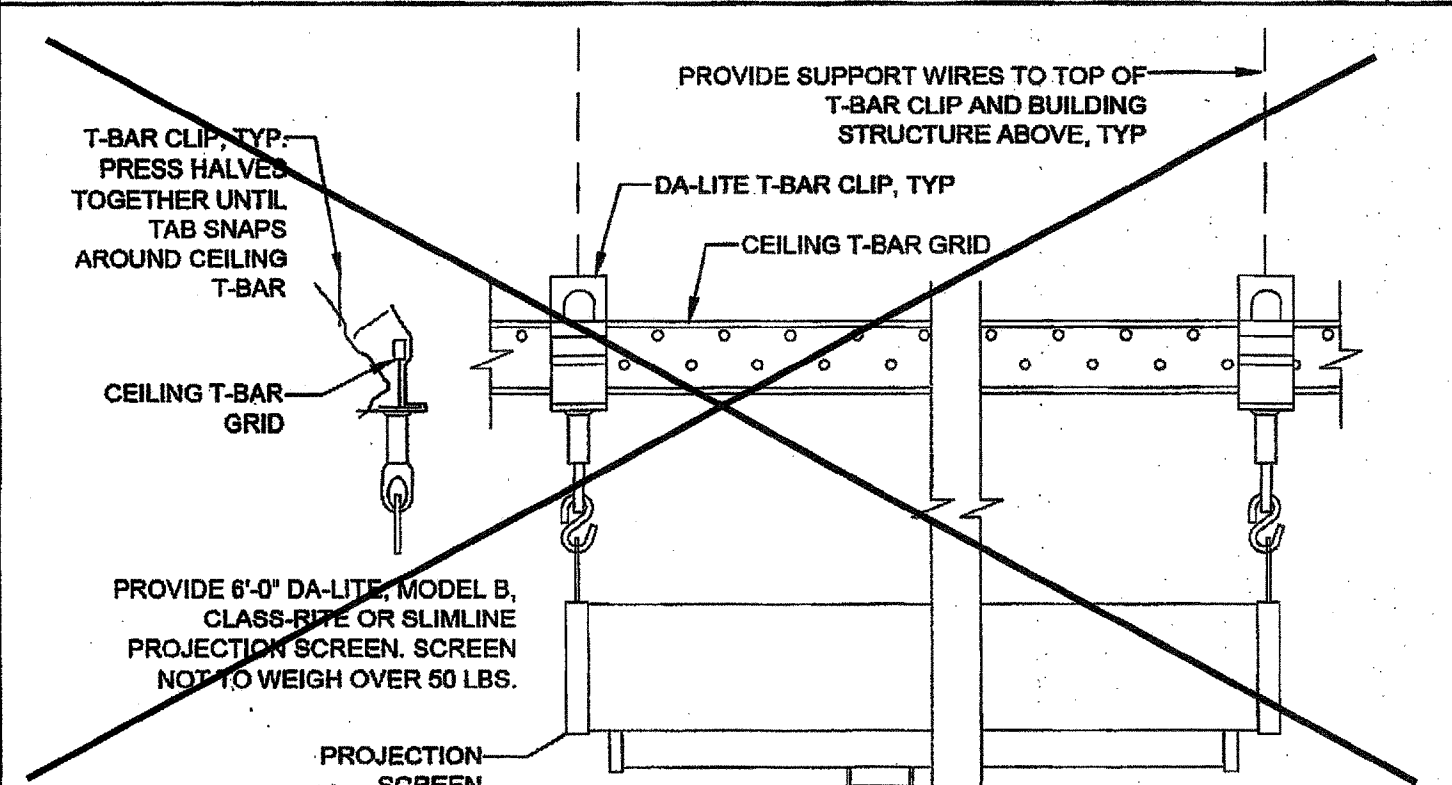


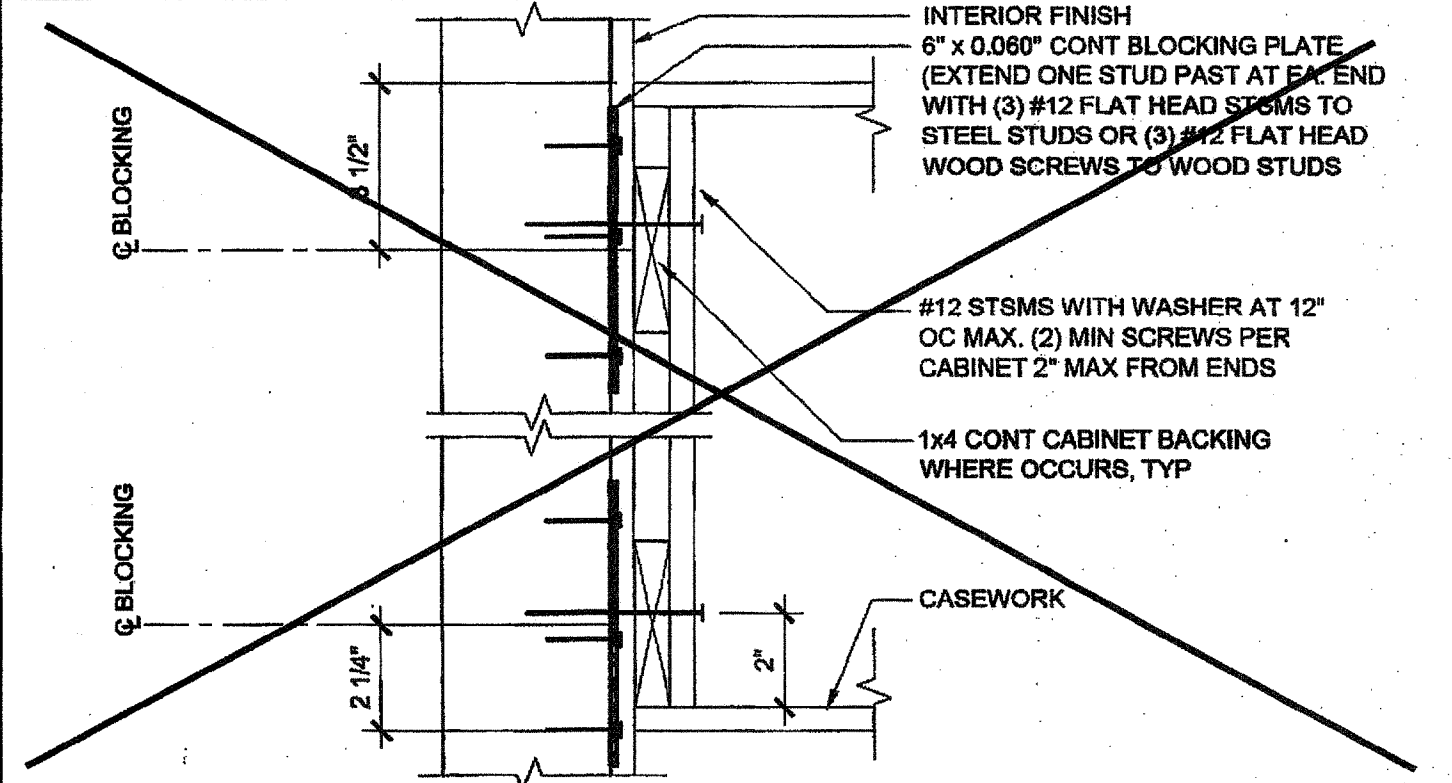
T.V. BLOCKING ATTACHMENT AT WOOD STUD SCALE: 1/2" = 1'-0" 16



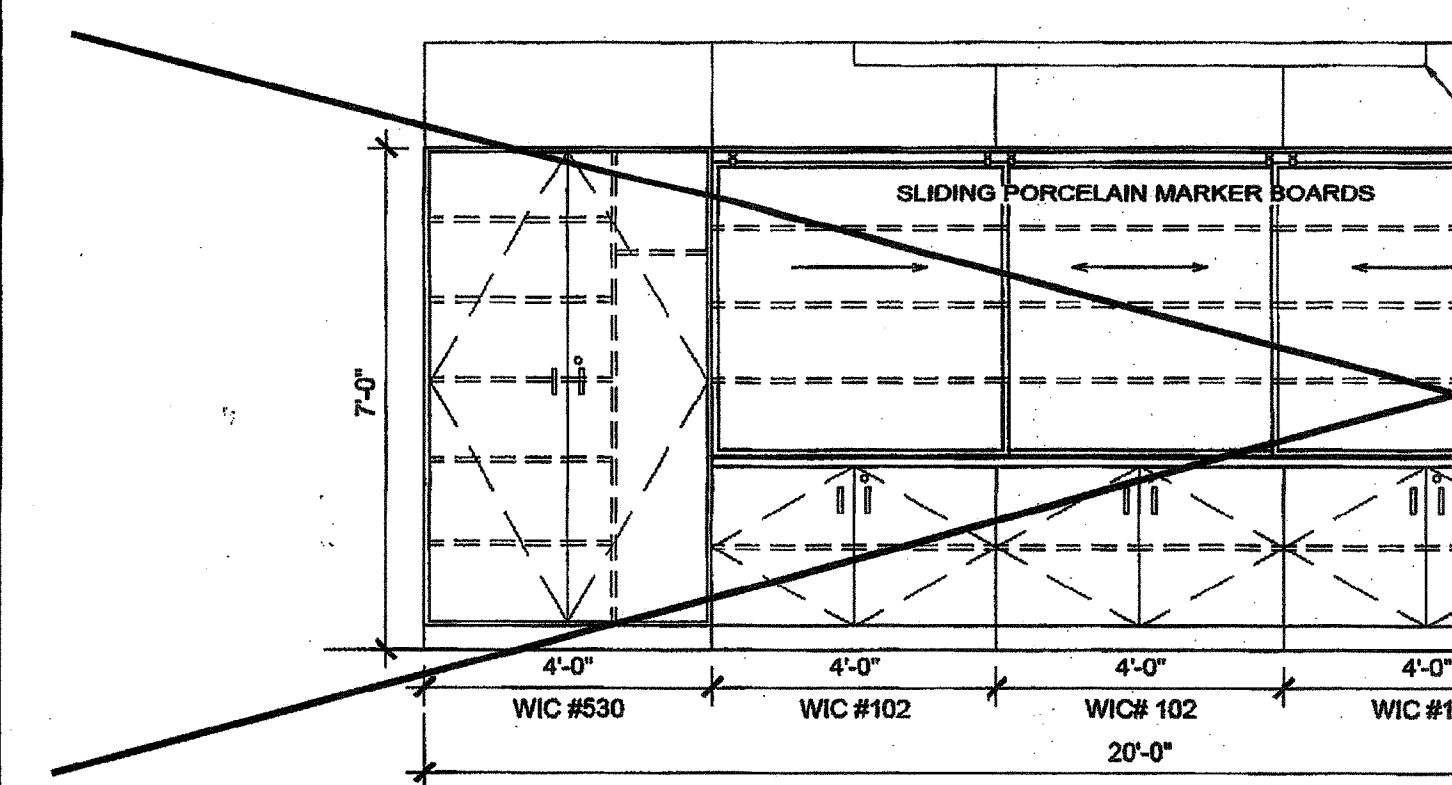
T.V. BLOCKING ATTACHMENT AT STEEL STUD SCALE: 1/2" = 1'-0" 17



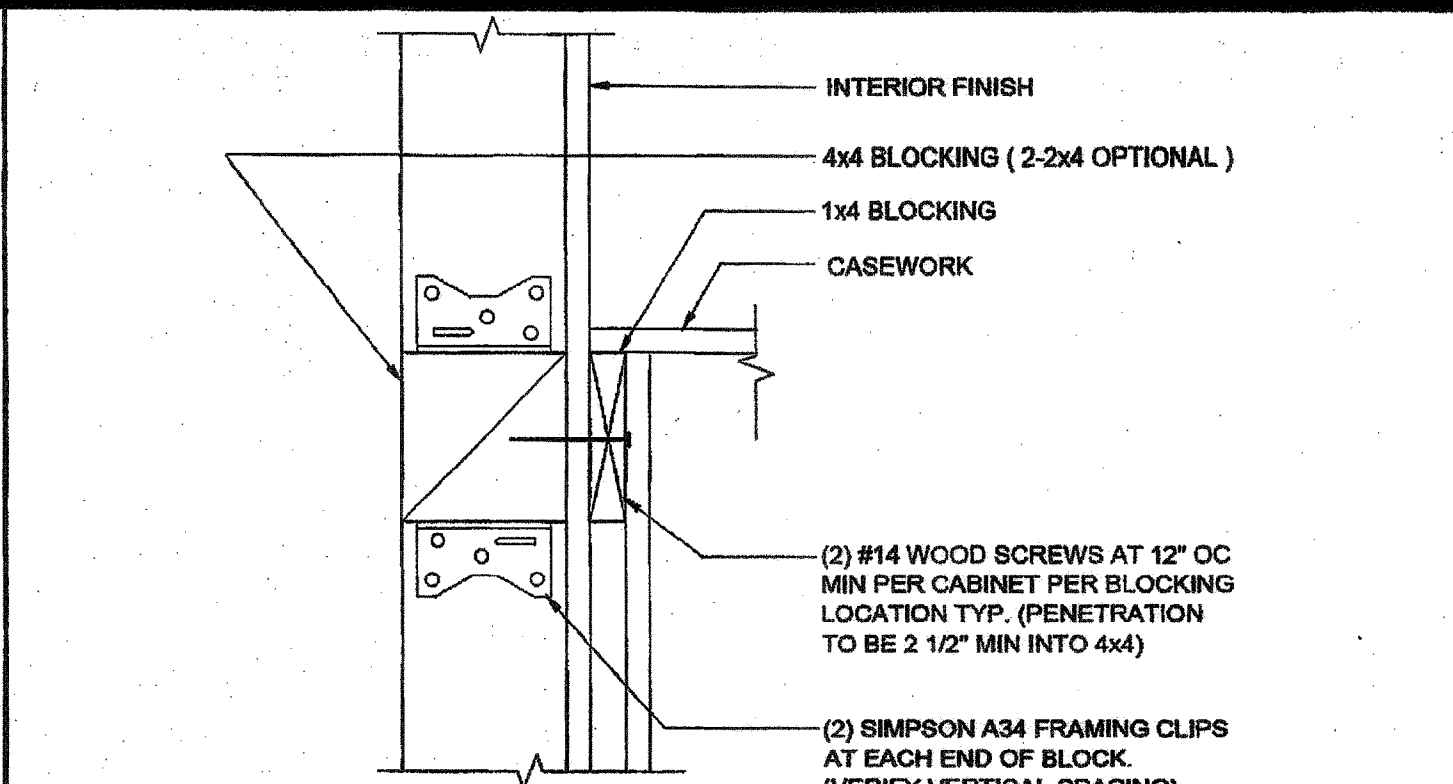
PROJECTION SCREEN MOUNTING SCALE: NTS 18



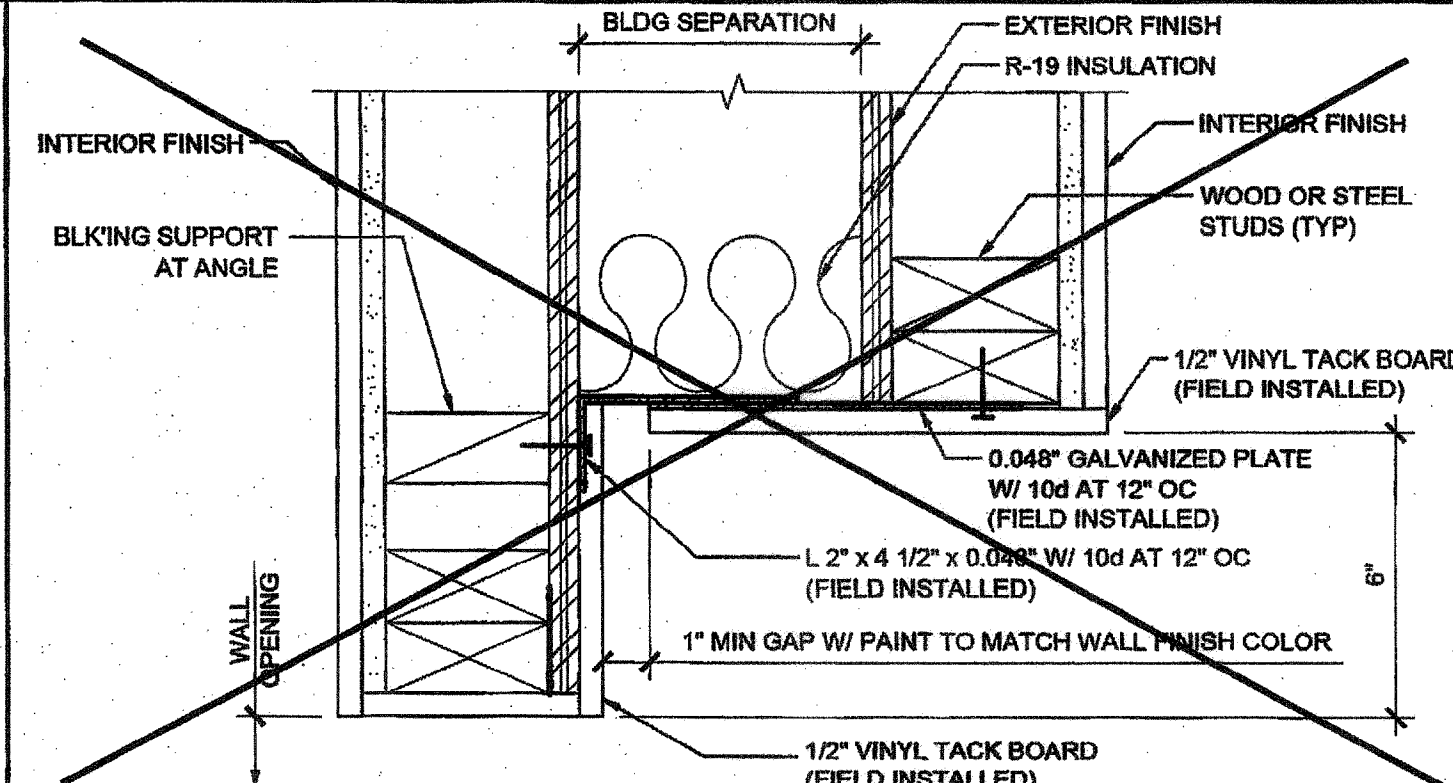
ATTACHMENT TO BLOCKING SCALE: 3" = 1'-0" 19



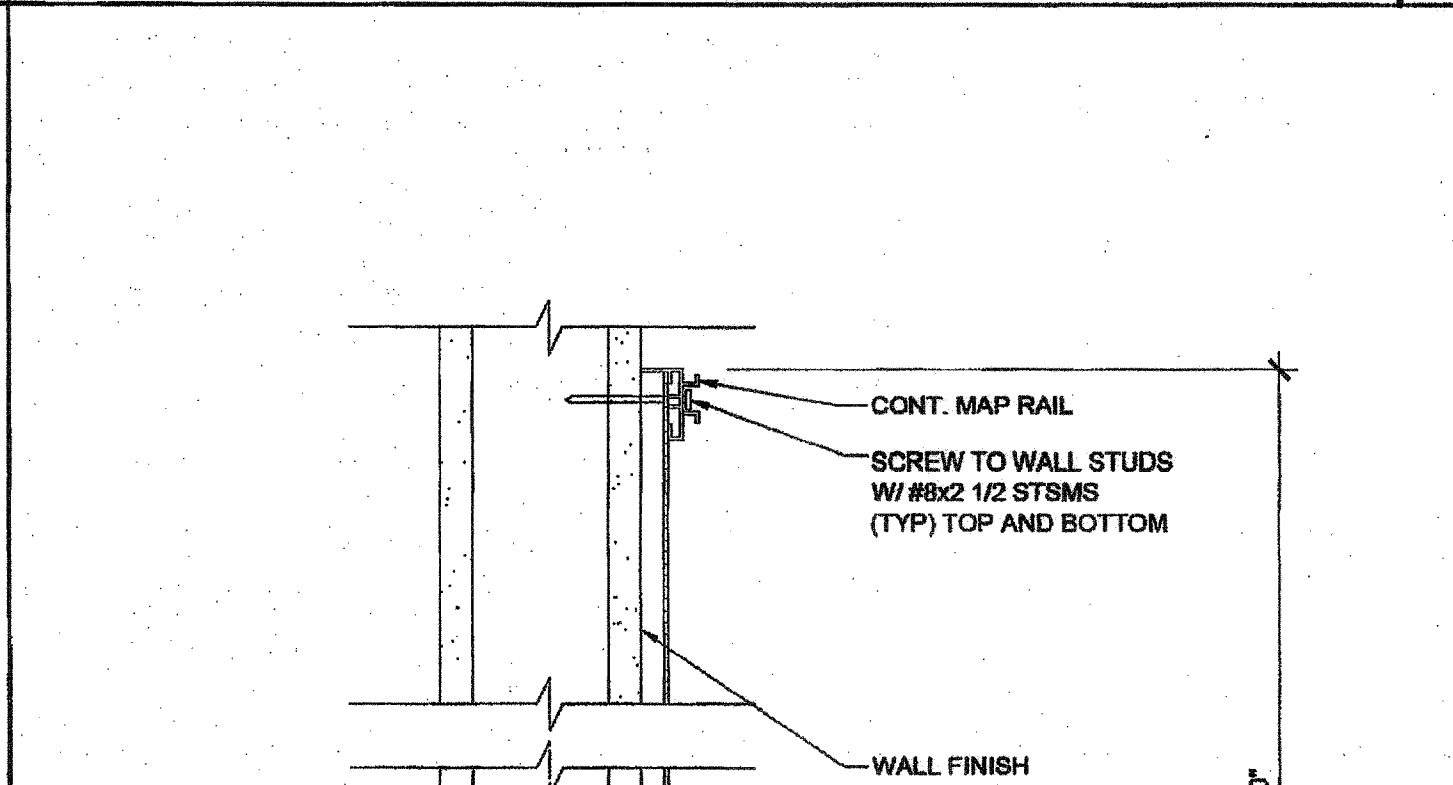
TEACHING WALL - ELEVATION / SECTION - OPTION SCALE: 3/8" = 1'-0" 15



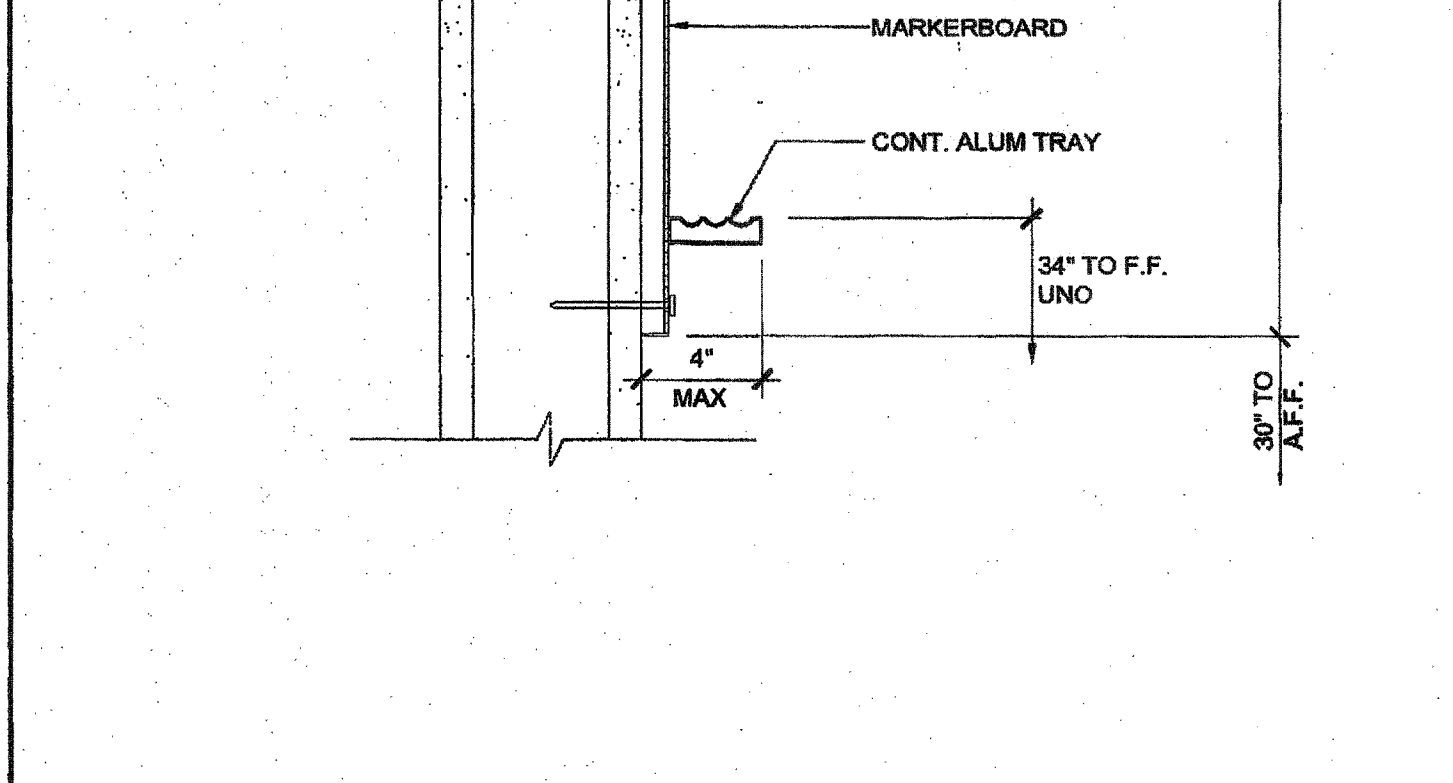
ATTACHMENT TO BLOCKING AT WOOD STUD SCALE: 3" = 1'-0" 11



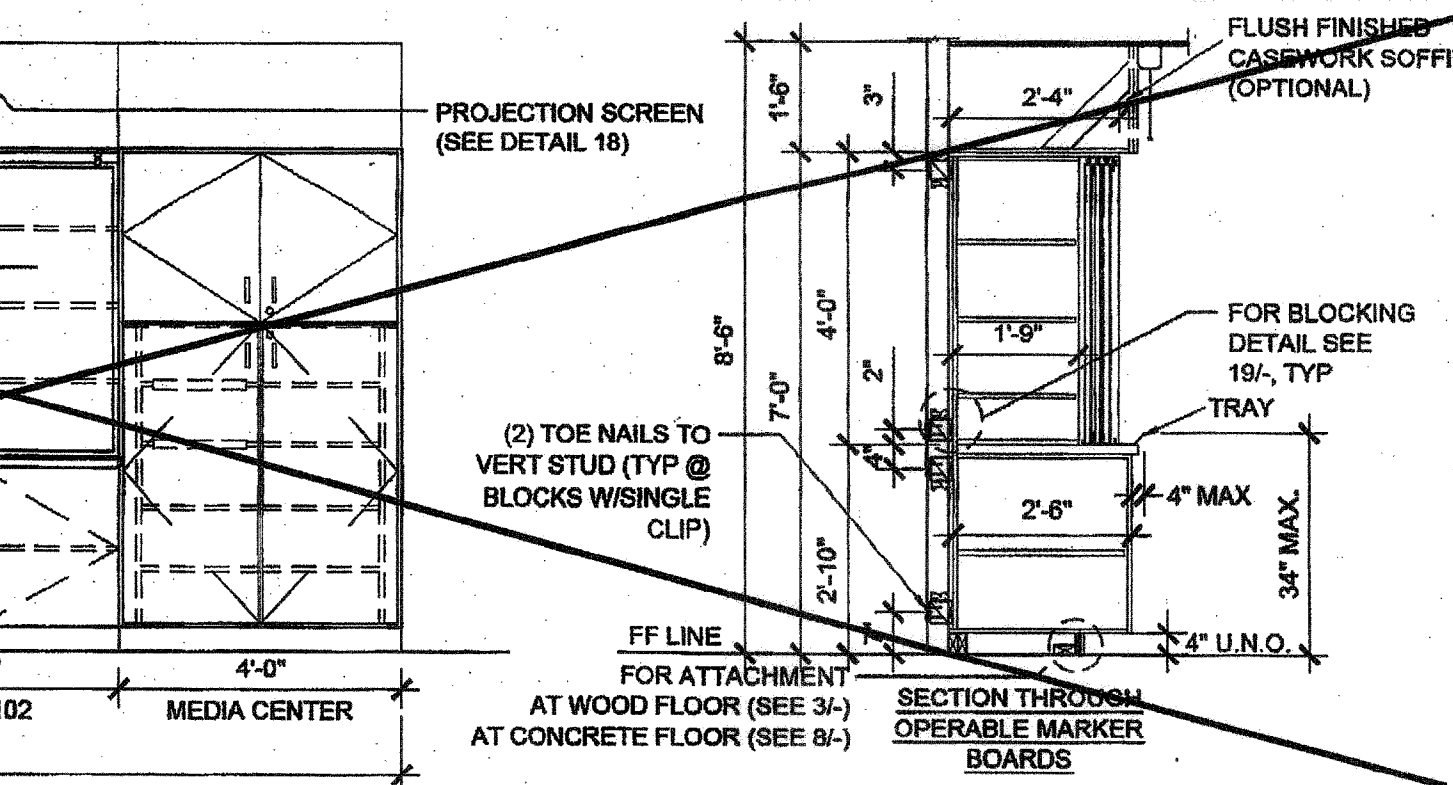
WALL OPENING AT HEADER AND JAMB SCALE: 3" = 1'-0" 12



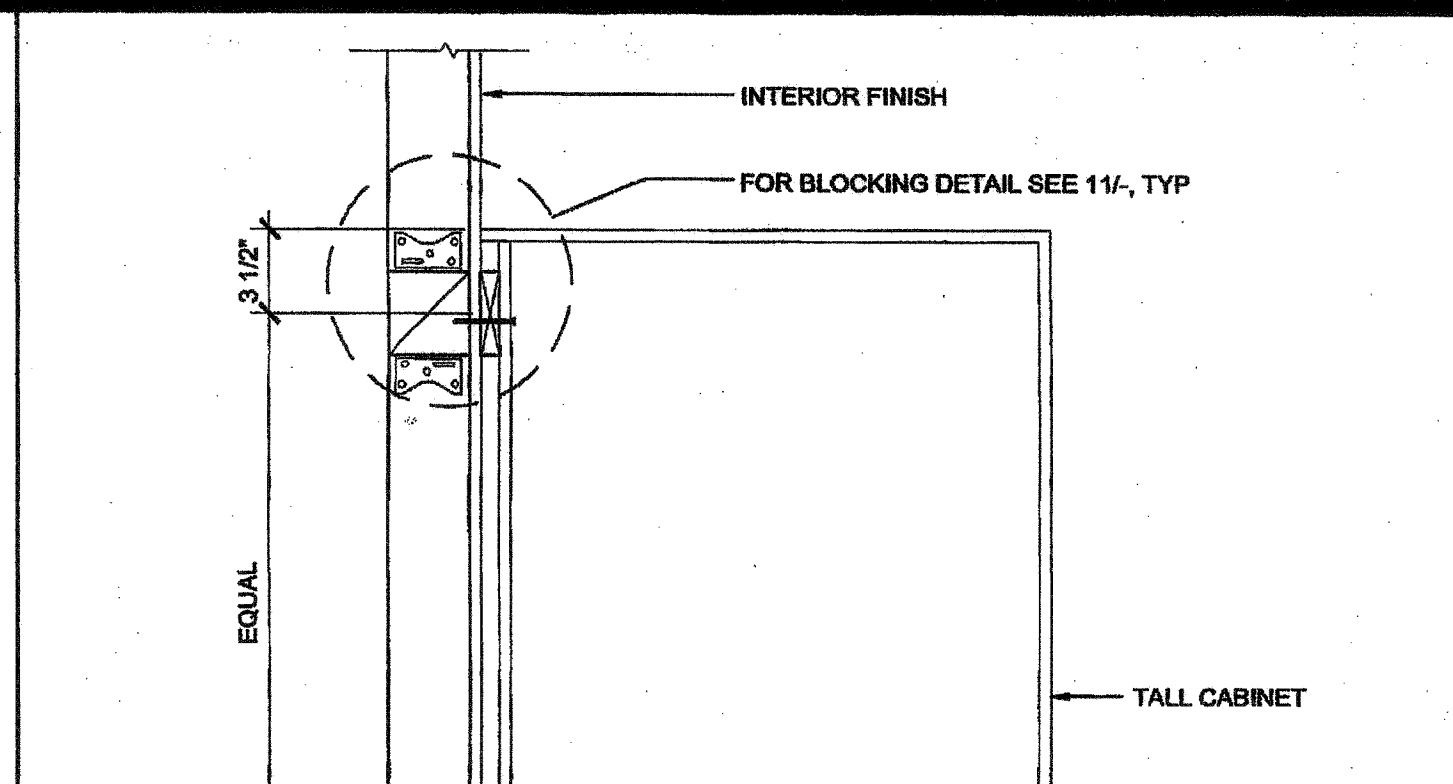
MARKER BOARD ATTACHMENT SCALE: 3" = 1'-0" 14



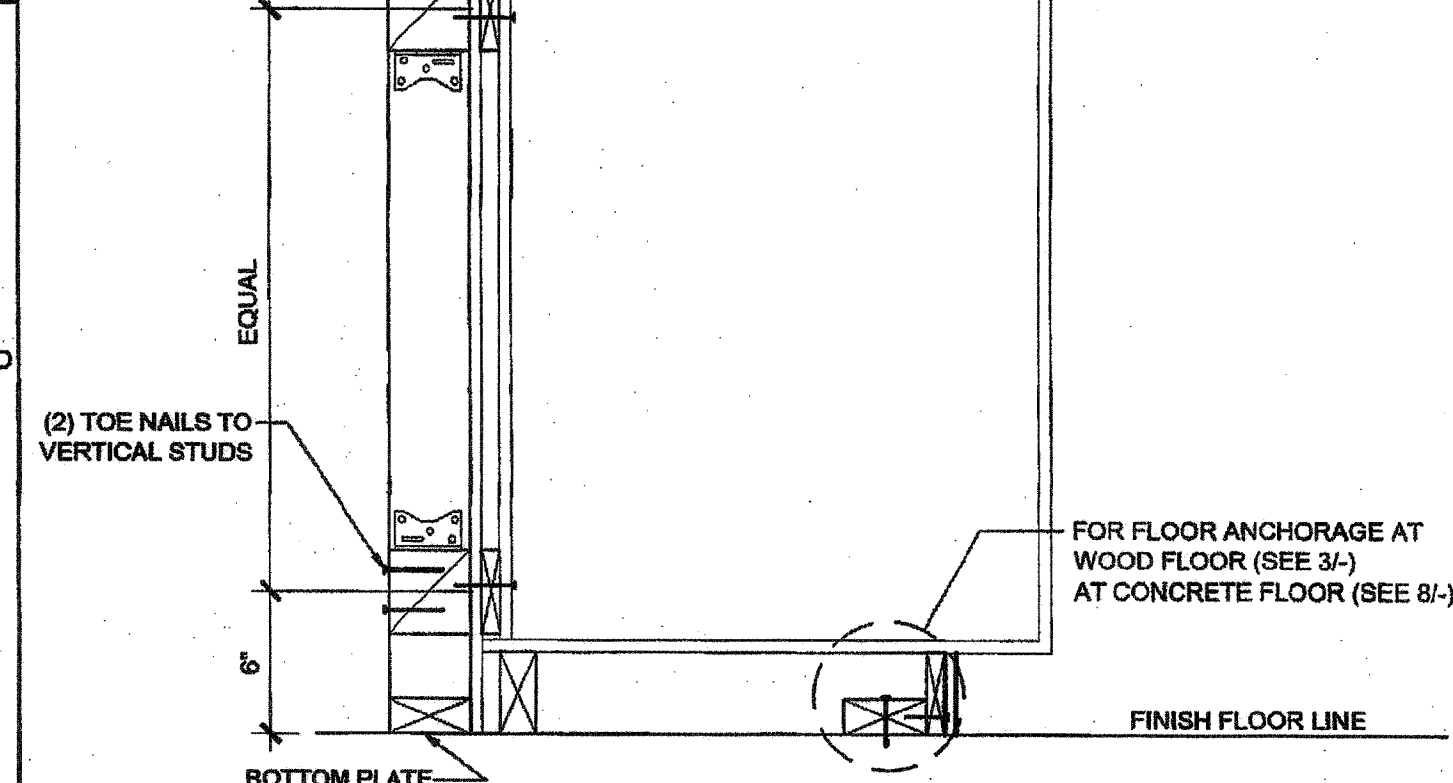
TALL CABINET WALL ANCHORAGE SCALE: 1 1/2" = 1'-0" 10



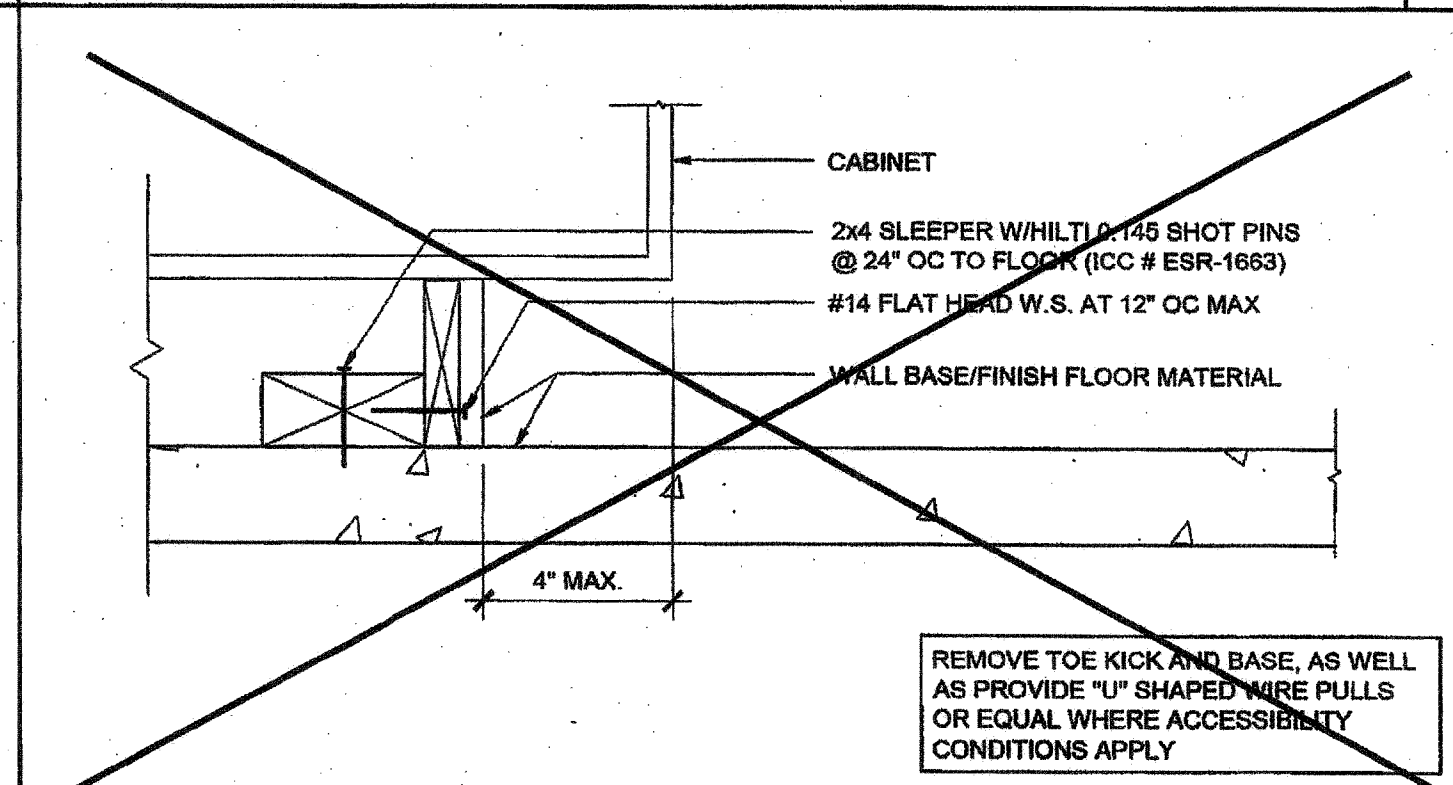
WALL HUNG ANCHORAGE CABINET SCALE: 1 1/2" = 1'-0" 5



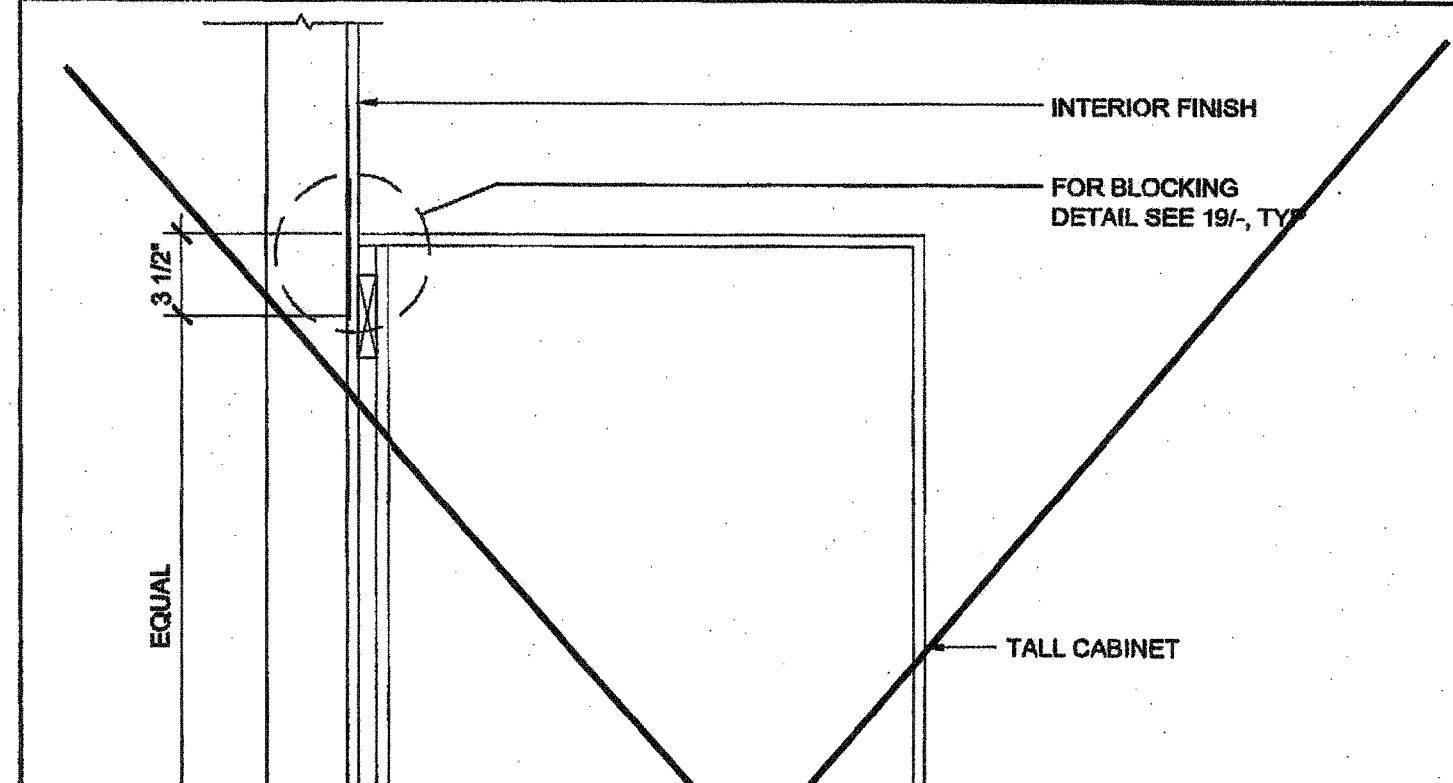
TALL CABINET WALL ANCHORAGE AT WOOD STUD SCALE: 1 1/2" = 1'-0" 7



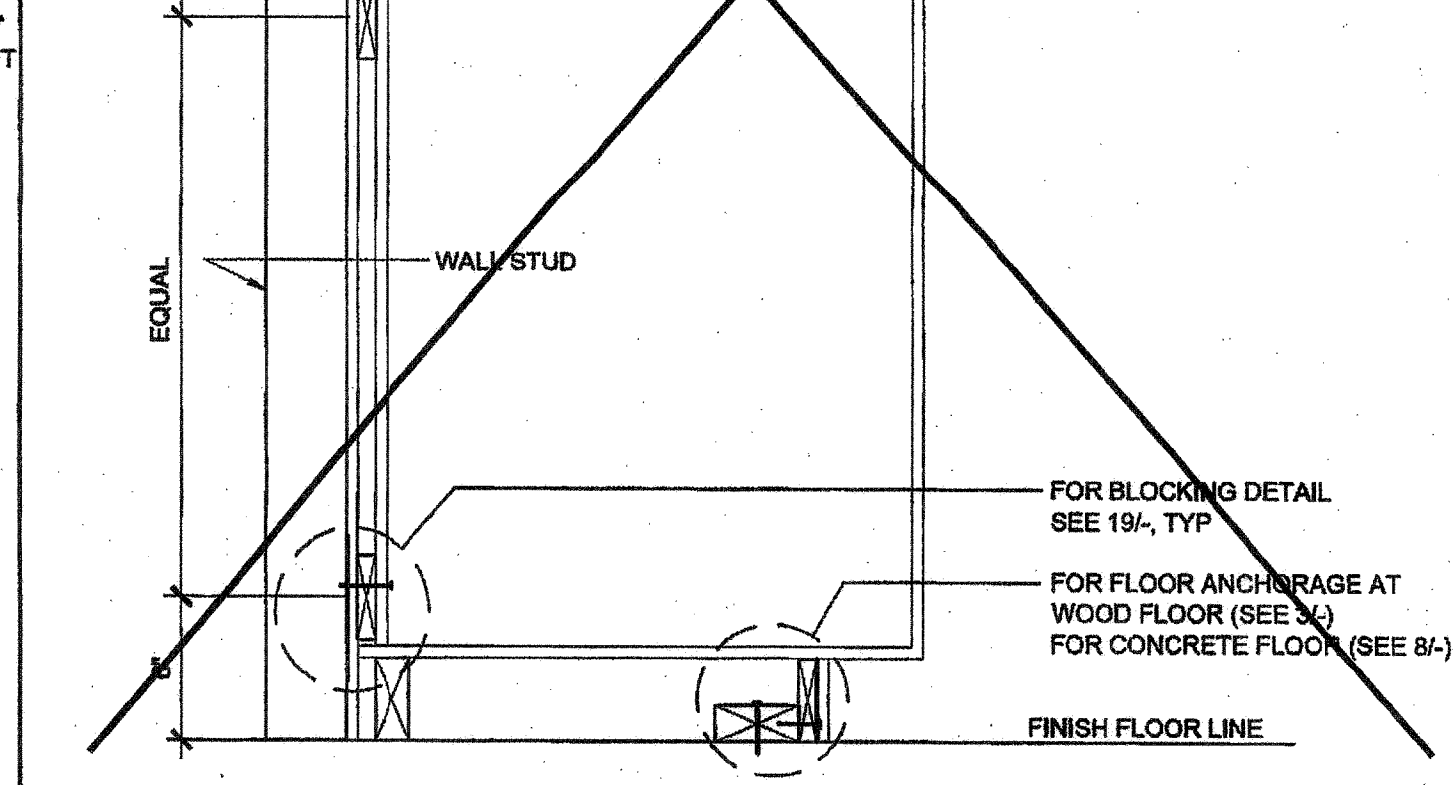
ATTACHMENT TO BLOCKING - CONC. FLOOR SCALE: 3" = 1'-0" 8



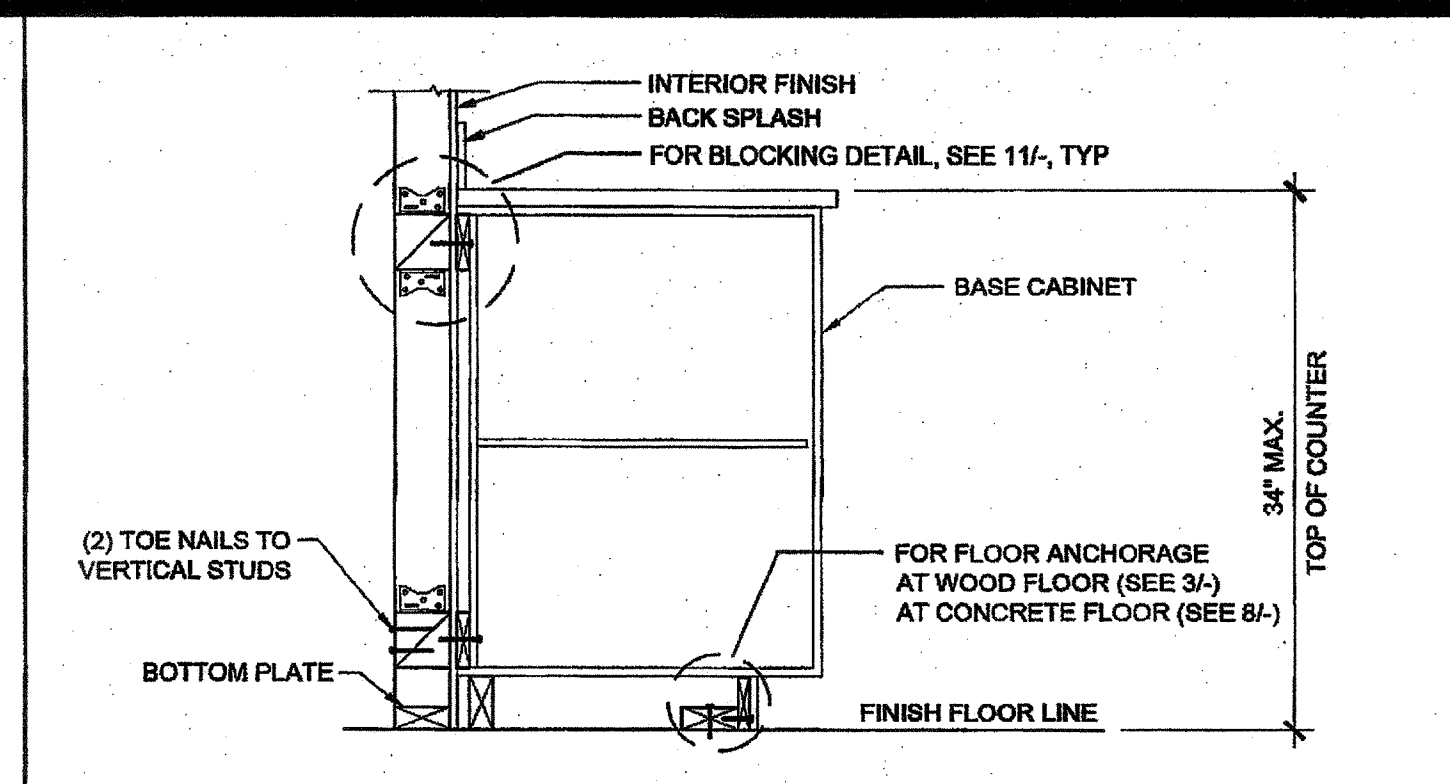
ATTACHMENT TO BLOCKING - WOOD FLOOR SCALE: 3" = 1'-0" 3



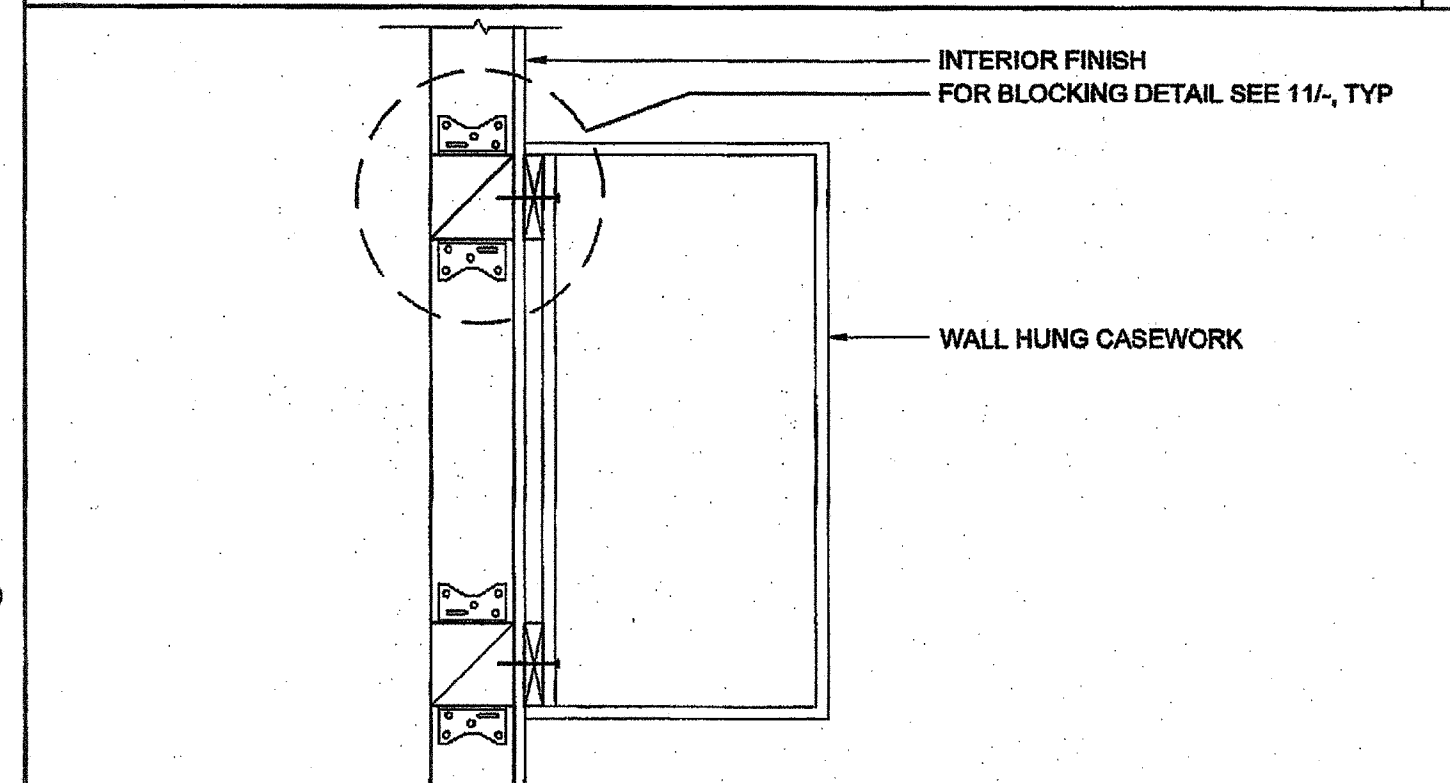
TALL CABINET WALL ANCHORAGE SCALE: 1 1/2" = 1'-0" 10



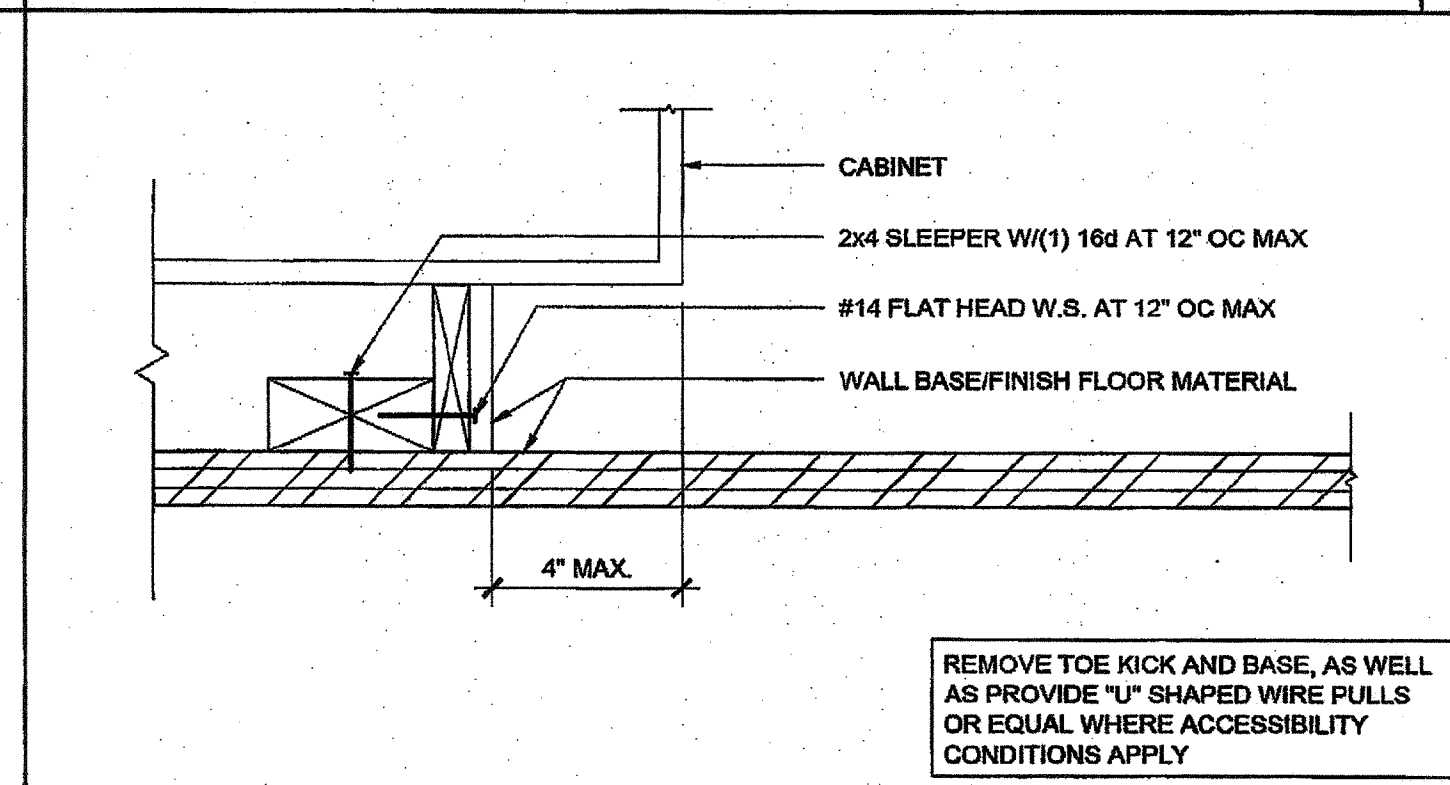
WALL HUNG ANCHORAGE CABINET SCALE: 1 1/2" = 1'-0" 5



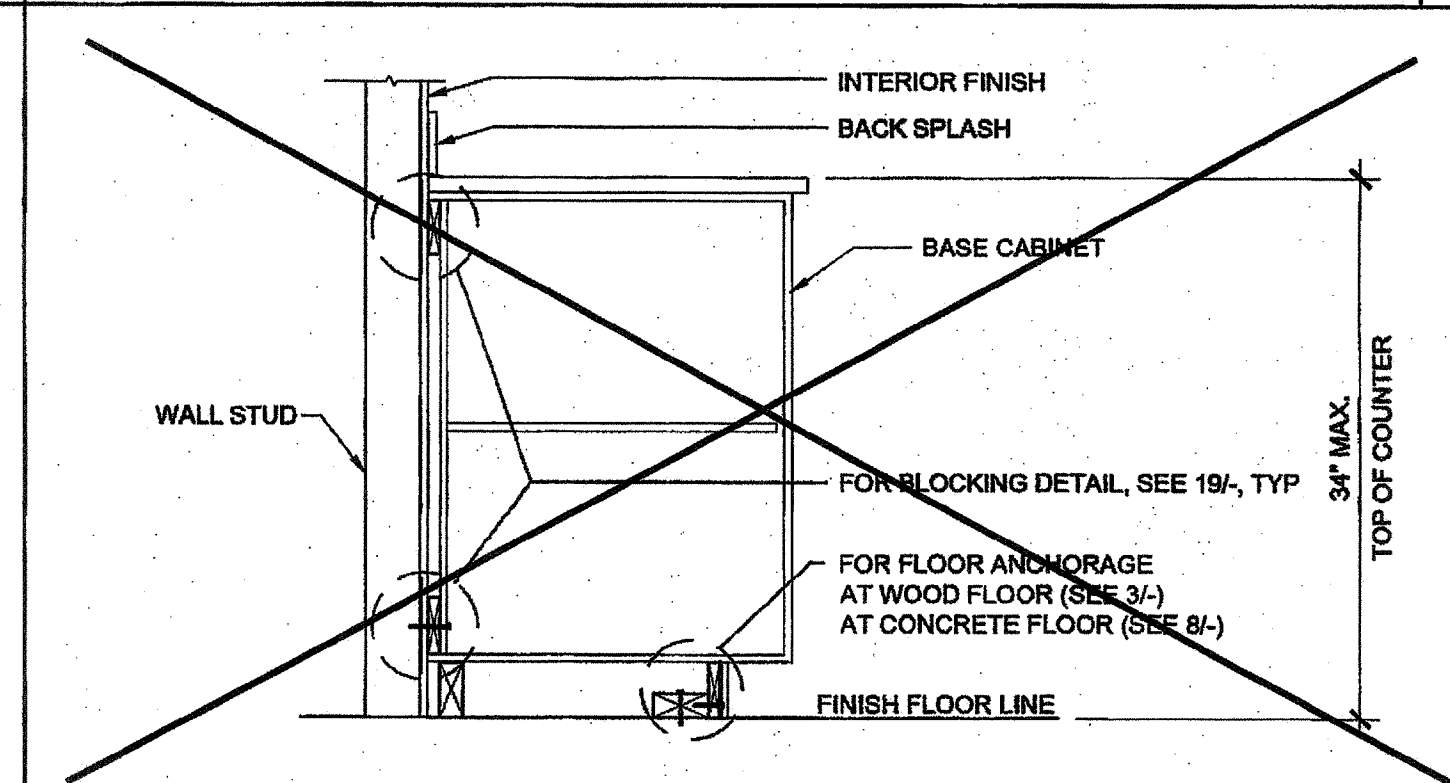
BASE CABINET WALL ANCHORAGE AT WOOD STUD SCALE: 1" = 1'-0" 1



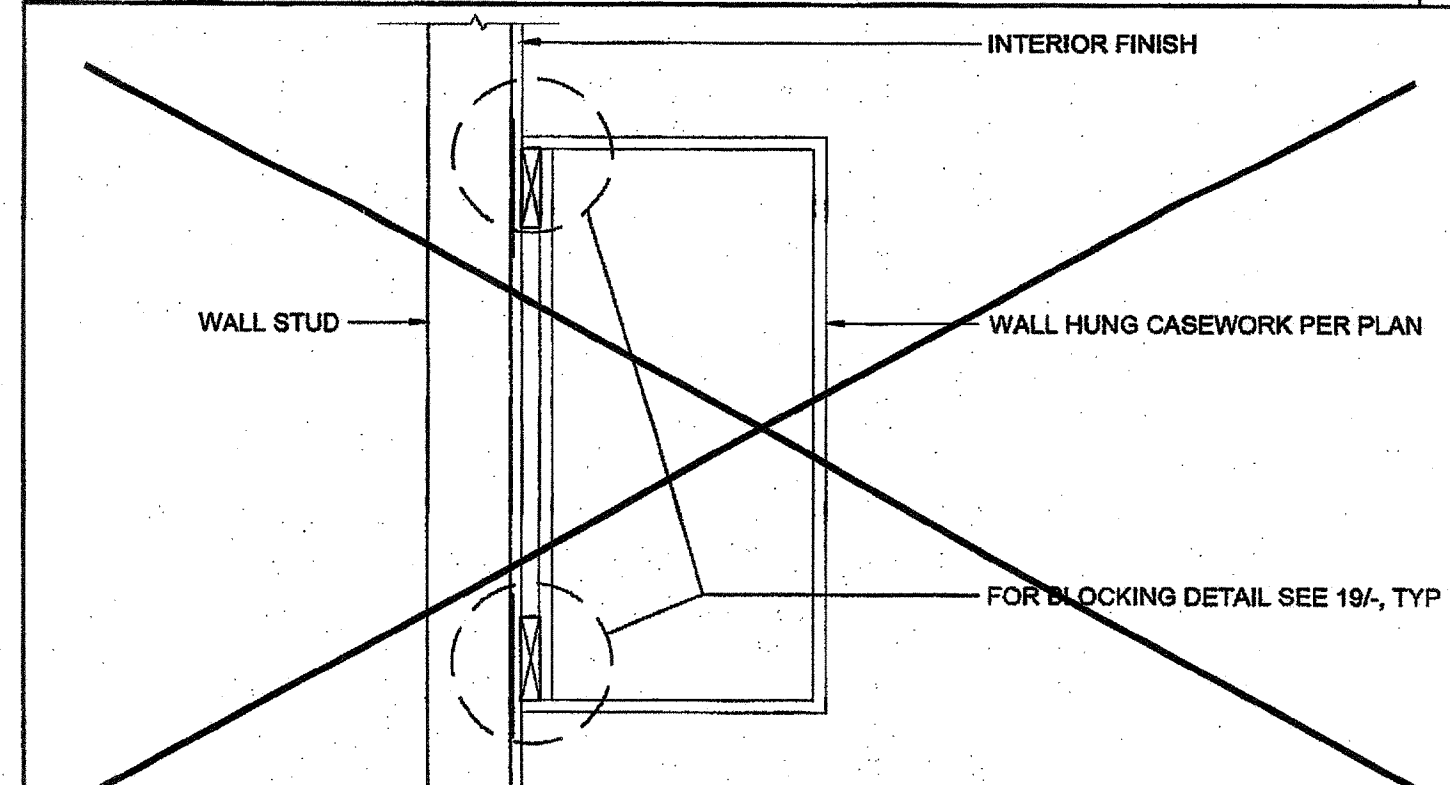
WALL HUNG ANCHORAGE CABINET AT WOOD STUD SCALE: 1 1/2" = 1'-0" 2



ATTACHMENT TO BLOCKING - WOOD FLOOR SCALE: 3" = 1'-0" 3



BASE CABINET WALL ANCHORAGE SCALE: 1" = 1'-0" 4



WALL HUNG ANCHORAGE CABINET SCALE: 1 1/2" = 1'-0" 5

THESE DRAWINGS AND ALL MATERIAL CONTAINED HEREIN ARE THE PROPERTY OF SILVERCREEK INDUSTRIES, INC (SCI Inc) AND SHALL NOT BE REPRODUCED, COPIED OR OTHERWISE DISPOSED OF DIRECTLY OR INDIRECTLY AND SHALL NOT BE USED IN WHOLE OR IN PART TO ASSIST IN THE MAKING OF OR FOR THE PURPOSE OF FURNISHING ANY INFORMATION FOR THE MAKING OF DRAWINGS, PRINTS, APPARATUS OR PARTS THEREOF WITHOUT THE FULL KNOWLEDGE AND WRITTEN CONSENT OF SCI Inc. ALL PATENTABLE MATERIAL CONTAINED HEREIN AND ORIGINATING WITH SCI Inc SHALL BE THE PROPERTY OF SCI Inc.

SILVER CREEK INDUSTRIES, INC.

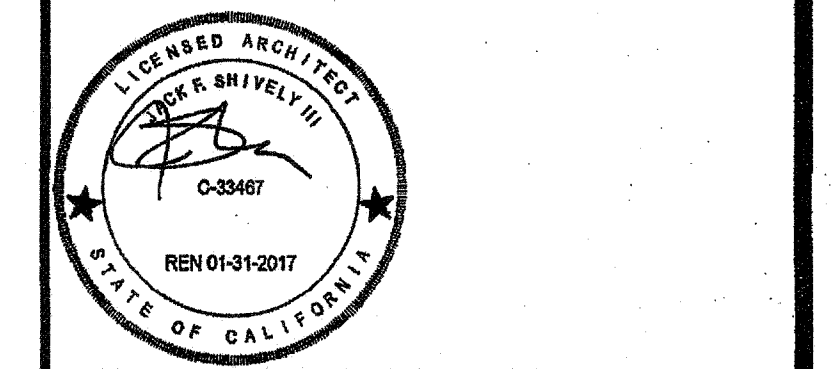
'BUILDING FOR THE NEXT GENERATION'

SILVER CREEK

2830 BARRETT AVE PERRIS, CALIFORNIA 92571
PHONE: 951-943-5393 FAX: 951-943-2211

PROJECT NAME:
24x40 STOCKPILE OFFICE BUILDING

SHEET TITLE:
ARCHITECTURAL DETAILS MISCELLANEOUS/OPTIONS



ARCHITECT OF RECORD
SUBMISSION DATE

FILE # 15-8
IDENTIFICATION STAMP
DIV. OF THE STATE ARCHITECT
OFFICE OF REGULATION SERVICES
03-118270
AC. FLS. SS. RAF
DATE NOV 8 2017
TRACKING #: 63221-290

PROJECT SPECIFIC STATE AGENCY APPROVAL

IDENTIFICATION STAMP
DIV. OF THE STATE ARCHITECT
04 118284
AC. FLS. SS. RAF
DATE MAY 11 2017

ORIGINAL PC STATE AGENCY APPROVAL

IDENTIFICATION STAMP
DIV. OF THE STATE ARCHITECT
OFFICE OF REGULATION SERVICES
PC 04-114102
AC. FLS. SS. RAF
DATE AUG 4 2015

REVISIONS

SILVER CREEK INDUSTRIES
24' x 40' PC - 2:12 PITCH

PROJECT NO:
DRAWN BY:
SCALE: AS NOTED
DATE: 01-30-15
P.C. SHEET NUMBER
A-5.80