

### WINDOW SCHEDULE

WINDOW NO.	QTY	TYPE	WIDTH	HEIGHT	FUNCTION	FRAME MATERIAL	GLASS MATERIAL	WALL THICKNESS	NOTES
A	1	8'-0"	4'-0"	XOX	ANOD	DP			
B	2	4'-0"	4'-0"	YO	ANOD	DP			
C	3	3'-0"	4'-0"	FIXED	FRW	FRG			45 MIN. ASSEMBLY

### WINDOW FINISH

ANOD: CLEAR ANODIZED ALUMINUM FRAME DP: 3/16" MINIMUM DUAL PANE TEMPERED GLASS OF SOLAR GRAY - 30% ENERGY SHIELD, ALL OPERABLE BASH SHALL HAVE SCREENS. (U-FACTOR = 0.500 MIN., SHGC = 0.350 MAX, STC = 36 MIN.)

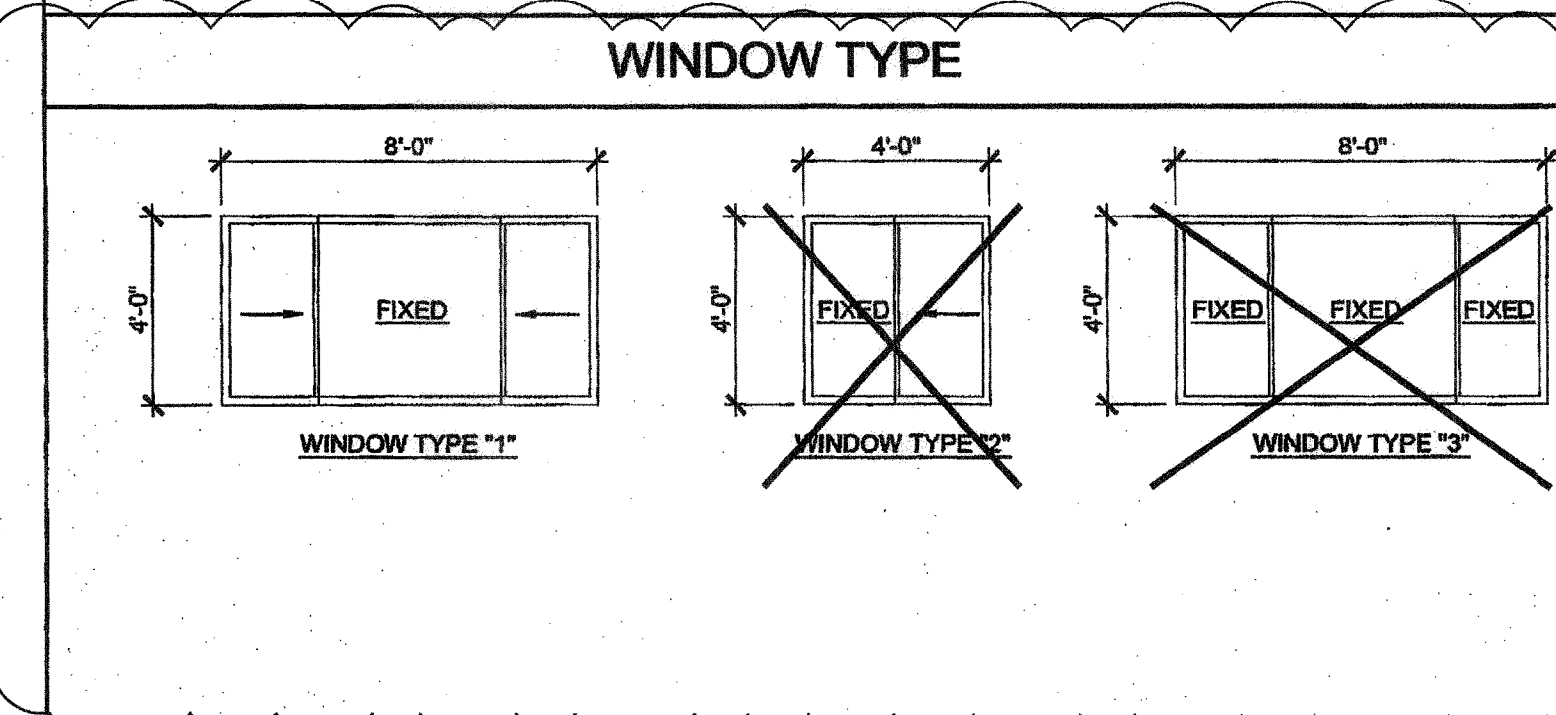
BRONZ: BRONZE ANODIZED ALUMINUM FRAME

PAINT: PAINTED FRAME

WF: 18GA WELDED FRAME

FRW: FIRE RATED WINDOW FRAME; MIN 0.048" THICK WELDED FRAME

FRG: FIRE RATED GLAZING; 1/4" WIRED GLASS. LABELED TO MEET THE REQUIREMENTS FOR A 3/4 HOUR FIRE WINDOW ASSEMBLY PER CBC SECTION/TABLE 715.5

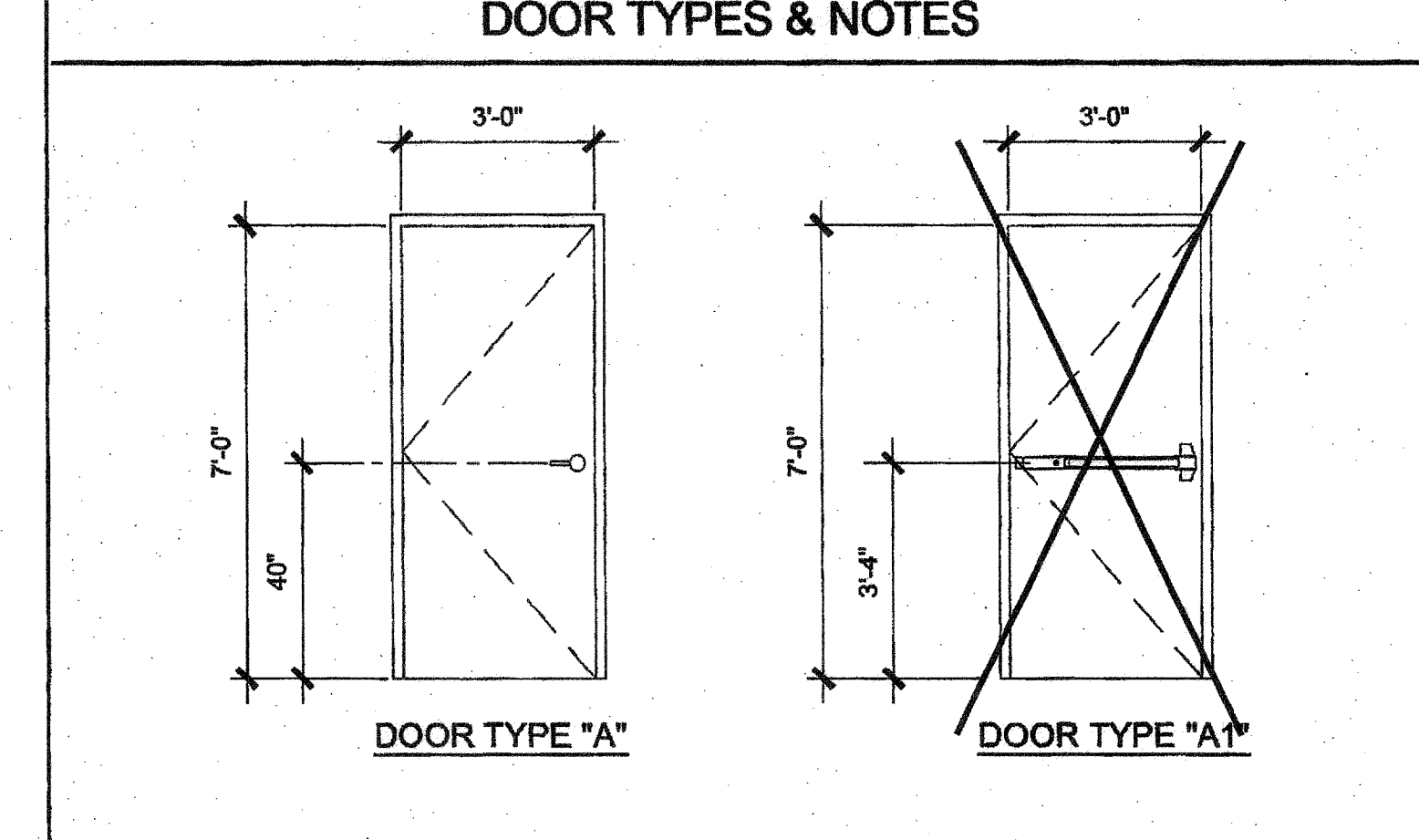


### DOOR SCHEDULE

DOOR NO.	WIDTH	HEIGHT	DOOR TYPE	QTY	DOOR MAT/FIN	FRAME MAT/FIN	HARDWARE SET	WALL THICKNESS	NOTES
1	3'-0"	7'-0"	A		HM	KD	HW-1	5.14"	
2	3'-0"	7'-0"	A		HM	KD	HW-2	5.14"	
3	3'-0"	7'-0"	A		SCL	KD	HW-3	5.14"	
4	3'-0"	7'-0"	B		HM	KD	HW-4	4.75"	
5	3'-0"	7'-0"	B		HM	KD	HW-5	4.75"	NO CLOSER REQ.
6	3'-0"	7'-0"	C		HM	KD	HW-6	4.48"	

### DOOR MATERIAL AND FINISH ABBREVIATIONS

HM: 18GA HOLLOW METAL	KD: KNOCK DOWN FRAME	EXTERIOR DOORS TO BE UNINSULATED SINGLE LAYER DOORS W/ U-FACTOR OF 0.500 MAX
WF: 18GA WELDED FRAME	SCL: SOLID CORE WOOD LEGACY	
AL: ALUMINUM	HC: HOLLOW CORE WOOD	
BST: STAINLESS STEEL	PT: PAINTED	



- DOOR HANDLE FOR LOCKSETS AND PANIC HARDWARE TO BE CENTERED AT 40" AFF. HARDWARE TO BE OPENED FROM THE INSIDE WITHOUT THE USE OF A KEY OR SPECIAL TOOLS, KNOWLEDGE OR EFFORT; LEVERS TO RETURN TO WITHIN 1/2" OF DOOR.
- ALL DOORS SHALL BE 1 3/4" THICK U.N.O.
- CLOSER SHALL BE SET FOR MAXIMUM OPENING PRESSURE OF 5 LBS AT EXTERIOR AND INTERIOR DOORS.
- PANIC HARDWARE IS REQUIRED TO BE INSTALLED WHEN THE CONFIGURATION OF ANY ROOM PROVIDES AN OCCUPANT LOAD OF 50 OR GREATER. CBC 1008.1.10
- ALL HARDWARE SHALL COMPLY WITH SILVER CREEK'S SPECS ON THIS SHEET AND CBC SECTIONS 11B-206.5, 11B-404.1 AND 1008.
- DOOR CLOSER SHALL BE ADJUSTED TO SO THAT FROM AN OPEN POSITION OF 70°, THE DOOR WILL TAKE AT LEAST 3 SECONDS TO MOVE TO A POINT 3" FROM THE LATCH, MEASURED TO THE LANDING SIDE OF THE DOOR
- PANIC AND FIRE EXIT HARDWARE, WHERE THIS TYPE HARDWARE IS INSTALLED, IT SHALL COMPLY WITH THE FOLLOWING:
  - THE ACTUATING PORTION OF THE RELEASING DEVICE SHALL EXTEND AT LEAST ONE-HALF OF THE DOOR LEAF WIDTH.
  - THE MAXIMUM UNLATCHING FORCE SHALL NOT EXCEED 5LBS PER THE 2013 CBC
  - APPROVED BY AUTHORITY W/ JURISDICTION, PANIC HARDWARE SHALL COMPLY WITH CBC SECTION 1008.1.10
- THE FIRE PROTECTION FOR EXTERIOR WALL IS DETERMINED BASED UPON THE FIRE SEPARATION DISTANCE IN WHICH THE WALL IS LOCATED. SEE CBC TABLE 705.8 OR TABLE 802

### FINISH SCHEDULE

ROOM NAME	FLOORING		WALL FINISH			CEILING		NOTES
	FLOOR	BASE	FRONT	LEFT	REAR	RIGHT	CEILING HT	
CLASSROOM 200	CARP	6" TS	TACK	TACK	TACK	TACK	CP	8'-6"
CLASSROOM 202	CARP	6" TS	TACK	TACK	TACK	TACK	CP	8'-6"
TOILET 203	GV	6" TS	FRP	FRP	FRP	FRP	CP	8'-0"

### FLOOR, WALL, CEILING MATERIALS

**FLOORING**  
 CARP: CARPET PER STATE OF CALIFORNIA SPECIFICATIONS COMPLYING WITH GROUP 1; TYPE "A" OR TYPE "B"; CLASS 2; DENSITY 4800; DIRECT GLUE DOWN  
 SV: SHEET VINYL FLOORING  
 VCT: VINYL COMPOSITION TILE

**BASE**  
 4" TS: 4" TOP SET BASE  
 6" TS: 6" TOP SET BASE  
 SC: 6" SELF-COVE BASE

**WALLS**  
 TACK: 1/2" VINYL TACKBOARD CLASS 1 OVER 1/2" GYPSUM BOARD BACKING  
 FRP: 1/8" FIBER REINFORCED PANEL OVER 1/2" WATER RESISTANT GYPSUM BOARD  
 GYP: 1/2" GYPSUM BOARD; TAPE; TEXTURE; PAINTED FINISH  
 PLY: 1/2" PLYWOOD FINISH  
 NF: NO FINISH

**CEILING**  
 CP: ACOUSTICAL LAY IN GRID CEILING PANELS (SEE SPECIFICATION NOTES ON REFLECTED CEILING PLAN)  
 HC: 5/8" GYPSUM BOARD; TAPE; TEXTURE; PAINTED FINISH (HARD LID CEILING)  
 GBP: 1/2" GYPSUM BOARD WASHABLE PANELS (PAINTED)

### FINISH NOTES

- ALL FINISHES SHALL COMPLY WITH CBC, CFC AND TITLE 19 CCR.
- PREPARATION FOR SUB-FLOOR TO ACCEPT FINISH FLOORING IS BY FLOORING CONTRACTOR. PLYWOOD SUB-FLOOR IS 2.4.1. PLYWOOD. OUTER PLYWOOD IS PLUGGED AND TOUCH SANDED. ANY DEFORMITIES DUE TO STANDARD CONSTRUCTION PRACTICES SHALL BE FILLED AND SANDED BY FLOORING CONTRACTOR. THE JOINT AT THE MOULINE SHALL NOT BE LARGER THAN 1/8" AND SHALL BE FILLED AND SANDED BY FLOORING CONTRACTOR.
- RESILIENT FLOORING DEMONSTRATING A COEFFICIENT OF FRICTION OF AT LEAST 0.6 PER ASTM D2047, WILL BE ACCEPTED AS MEETING THE INTENT OF SLIP RESISTANCE.
- CARPET SHALL HAVE A LEVEL LOOP, TEXTURED LOOP, LEVEL CUT, OR LEVEL CUT / UNICUT PILE TEXTURE AND MAXIMUM PILE HEIGHT OF 1/2" PER THE 2013 CBC. CARPET EDGE SHALL COMPLY WITH THE 2013 CBC
- INTERIOR WALL AND CEILING FINISHES SHALL HAVE A MIN. CLASS 'C' RATING. FLAME SPREAD INDEX 76-200 & SMOKE DEVELOPED INDEX 0-450 PER 2013 CBC 803.

### DOOR HARDWARE

<b>CLASSROOM -</b>	<b>EXTERIOR DOOR HW-1</b>
LOCKSET: SCHLAGE ND70PDRH0626 (cylindrical)	Finish 26D or equal
BUTTS: HAGER BB1191 4 1/2" x 4 1/2" NRP	Finish 26D or equal
CLOSER: NORTON 8501 BFDA	Finish 689 or equal
WEATHER STRIP: HAGER 891SAV 3684	Finish Alum or equal
THRESHOLD: HAGER 413SA 36	Finish Alum or equal
DOOR BOTTOM: HAGER 783SAV 35N	Finish Alum or equal
<b>DOOR W/ PANIC HARDWARE -</b>	<b>EXTERIOR DOOR HW-2</b>
EXIT DEVICE: VON DUPRIN AX99L-2-PA w/ SCHLAGE rim cylinder	Finish Alum or equal
BUTTS: HAGER BB1191 4 1/2" x 4 1/2" NRP	Finish 26D or equal
CLOSER: NORTON 8501 BFDA	Finish 689 or equal
WEATHER STRIP: HAGER 891SAV 3684	Finish Alum or equal
THRESHOLD: HAGER 413SA 36	Finish Alum or equal
DOOR BOTTOM: HAGER 783SAV 35N	Finish Alum or equal
<b>STAFF RESTROOM / SINGLE-OCCUPANCY</b>	<b>INTERIOR DOOR HW-3</b>
LOCKSET: SCHLAGE ND40SRH0626 (cylindrical)	Finish 26D or equal
BUTTS: HAGER 1279 4 1/2" x 4 1/2"	Finish 26D or equal
<b>BOYS &amp; GIRLS RESTROOM -</b>	<b>EXTERIOR DOOR HW-4</b>
LOCKSET: SCHLAGE ND70PDRH0626 (cylindrical)	Finish 26D or equal
BUTTS: HAGER BB1191 4 1/2" x 4 1/2" NRP	Finish 26D or equal
CLOSER: NORTON 8501 BFDA (OPTIONAL)	Finish 689 or equal
WEATHER STRIP: HAGER 891SAV 3684	Finish Alum or equal
THRESHOLD: HAGER 413SA 36	Finish Alum or equal
DOOR BOTTOM: HAGER 783SAV 35N	Finish Alum or equal
LOUVER: ANEMO 24 x 12	Finish Bronze or equal
<b>STAFF RESTROOM -</b>	<b>EXTERIOR DOOR HW-5</b>
LOCKSET: SCHLAGE NDR5PDRH0626 (cylindrical)	Finish 26D or equal
BUTTS: HAGER BB1191 4 1/2" x 4 1/2" NRP	Finish 26D or equal
WEATHER STRIP: HAGER 891SAV 3684	Finish Alum or equal
THRESHOLD: HAGER 413SA 36	Finish Alum or equal
DOOR BOTTOM: HAGER 783SAV 35N	Finish Alum or equal
LOUVER: ANEMO 24 x 12	Finish Bronze or equal
<b>PLUMBING CHASE DOOR -</b>	<b>INTERIOR DOOR HW-6</b>
LOCKSET: SCHLAGE ND70PDRH0626 (cylindrical)	Finish 26D or equal
BUTTS: HAGER BB1191 4 1/2" x 4 1/2" NRP	Finish 26D or equal

**EMERGENCY EXIT AND PANIC HARDWARE:**  
 INDICATE ON PLANS AND/OR SPECIFICATIONS COMPLIANCE WITH SFPM STANDARD 12-10-3, SECTION 12-10-302.  
 (A) THE CROSS-BAR SHALL EXTEND ACROSS NOT LESS THAN ONE-HALF THE WIDTH OF THE DOORGATE.  
 (D) THE ENDS OF THE CROSS-BAR SHALL BE CURVED, GUARDED OR OTHERWISE DESIGNED TO PREVENT CATCHING ON THE CLOTHING OF PERSONS DURING EGRESS.

### INSULATION SPECIFICATIONS

**MOISTURE PROTECTION INSULATION:**  
 DESCRIPTION OF WORK: THE FURNISHING AND INSTALLING OF ALL INSULATION FOR ALL CEILING, FLOOR AREAS, AND EXTERIOR WALLS. (CLASS A = 0-25 FLAME SPREAD.) SMOKE DEVELOPMENT DENSITY LESS THAN 450.

**MATERIAL:** INSULATING MATERIAL FOR WALLS, CEILINGS, AND FLOORS SHALL BE FIBERGLASS BATTS (UNFACED) AND SHALL COMPLY WITH CBC 720.2 & 720.3. INSULATION SHALL BE AS MANUFACTURED BY OWENS-CORNING FIBERGLASS CORPORATION, JOHNS-MANVILLE, CERTAINITIES, OR EQUAL.

**INSULATION VALUES**  
 SEE SHEETS A-0.6, A-0.7, A-0.8 FOR REQUIRED INSULATION VALUES PER CLIMATE ZONE

**EXTERIOR WALL INSULATION (MIN.)**  
 R-13 (2x4)  
 R-19 (2x6)  
 R-30 (2x8)

**INTERIOR WALL INSULATION (MIN.)**  
 R-13

**FLOOR INSULATION (MIN.)**  
 NONE  
 R-13  
 R-19

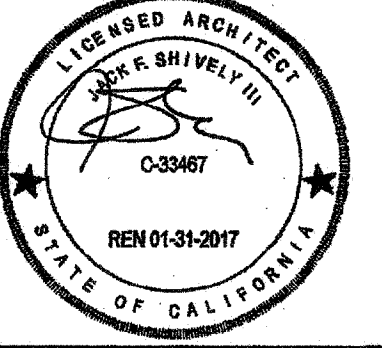
**ROOF INSULATION (MIN.)**  
 R-19  
 R-30  
 R-36  
 R-19 BETWEEN JOISTS AND R-19 BELOW JOISTS

THESE DRAWINGS AND ALL MATERIAL CONTAINED HEREIN ARE THE PROPERTY OF SILVERCREEK INDUSTRIES, INC (SCI Inc) AND SHALL NOT BE REPRODUCED, COPIED OR OTHERWISE DISPOSED OF DIRECTLY OR INDIRECTLY AND SHALL NOT BE USED IN WHOLE OR IN PART TO ASSIST IN THE MAKING OF OR FOR THE PURPOSE OF FURNISHING ANY INFORMATION FOR THE MAKING OF DRAWINGS, PRINTS, APPARATUS OR PARTS THEREOF WITHOUT THE FULL KNOWLEDGE AND WRITTEN CONSENT OF SCI Inc. ALL PATENTABLE MATERIAL CONTAINED HEREIN AND ORIGINATING WITH SCI Inc SHALL BE THE PROPERTY OF SCI Inc



PROJECT NAME:  
**24x40 STOCKPILE OFFICE BUILDING**

SHEET TITLE:  
**SCHEDULES**



ARCHITECT OF RECORD SUBMISSION DATE  
 FILE # 15-6  
 IDENTIFICATION STAMP DIV. OF THE STATE ARCHITECT OFFICE OF REGULATION SERVICES  
 03-118270  
 AC. FL. SS. CC  
 DATE NOV - 8 2017  
 TRACKING #: 63221-290

PROJECT SPECIFIC STATE AGENCY APPROVAL  
 IDENTIFICATION STAMP DIV. OF THE STATE ARCHITECT  
 04 118284  
 ACS FL. SS. RDC  
 DATE MAY 1 8 2017

ORIGINAL PC STATE AGENCY APPROVAL  
 IDENTIFICATION STAMP DIV. OF THE STATE ARCHITECT OFFICE OF REGULATION SERVICES  
 PC 04-114102  
 ACS FL. SS. RDC  
 DATE AUG - 4 2015

### REVISIONS

NO.	DESCRIPTION

SILVER CREEK INDUSTRIES  
 24' x 40' PC - 2:12 PITCH

PROJECT NO:  
 DRAWN BY:  
 SCALE: AS NOTED  
 DATE: 01-30-15  
 P.C. SHEET NUMBER  
**A-0.2**

REFER TO SHEET "A-0.2N" FOR PROJECT SPECIFIC