

THESE DRAWINGS AND ALL MATERIAL CONTAINED HEREIN ARE THE PROPERTY OF SILVERCREEK INDUSTRIES, INC (SCI Inc) AND SHALL NOT BE REPRODUCED, COPIED OR OTHERWISE DISPOSED OF DIRECTLY OR INDIRECTLY AND SHALL NOT BE USED IN WHOLE OR IN PART TO ASSIST IN THE MAKING OF OR FOR THE PURPOSE OF FURNISHING ANY INFORMATION FOR THE MAKING OF DRAWINGS, PRINTS, APPARATUS OR PARTS THEREOF WITHOUT THE FULL KNOWLEDGE AND WRITTEN CONSENT OF SCI Inc. ALL PATENTABLE MATERIAL CONTAINED HEREIN AND ORIGINATING WITH SCI Inc SHALL BE THE PROPERTY OF SCI Inc

SILVER CREEK INDUSTRIES, INC.



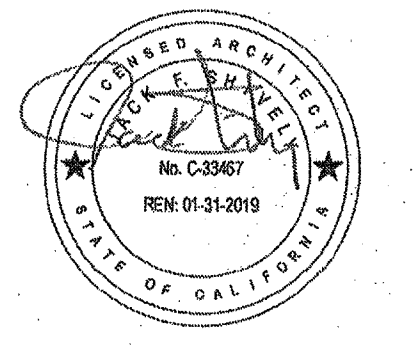
2830 BARRETT AVE. PERRIS, CALIFORNIA 92571
PHONE: 951-943-5393 FAX: 951-943-2211

PROJECT NAME:

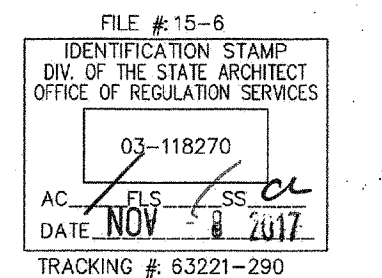
24x40 STOCKPILE OFFICE BUILDING

SHEET TITLE:

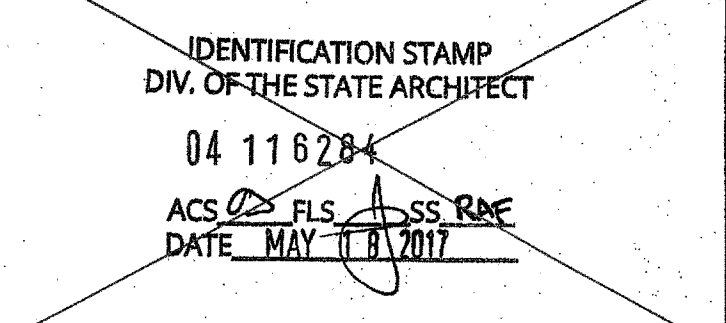
PROJECT SPECIFIC EXTERIOR ELEVATIONS



ARCHITECT OF RECORD
SUBMISSION DATE



PROJECT SPECIFIC STATE AGENCY APPROVAL



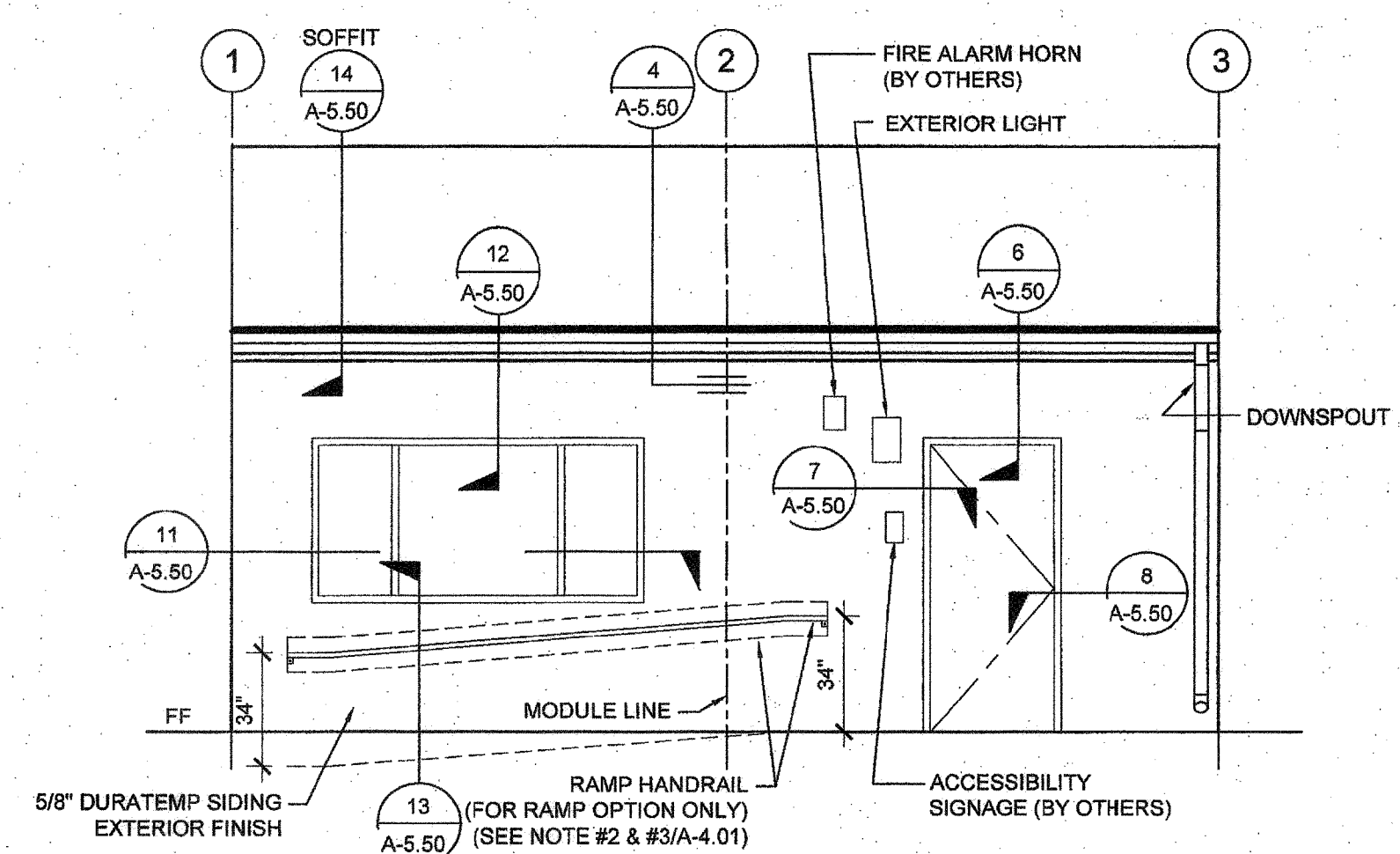
ORIGINAL PC STATE AGENCY APPROVAL

REVISIONS

SILVER CREEK INDUSTRIES

PROJECT NO: 10914
DRAWN BY:
SCALE: AS NOTED
DATE: 04-20-17

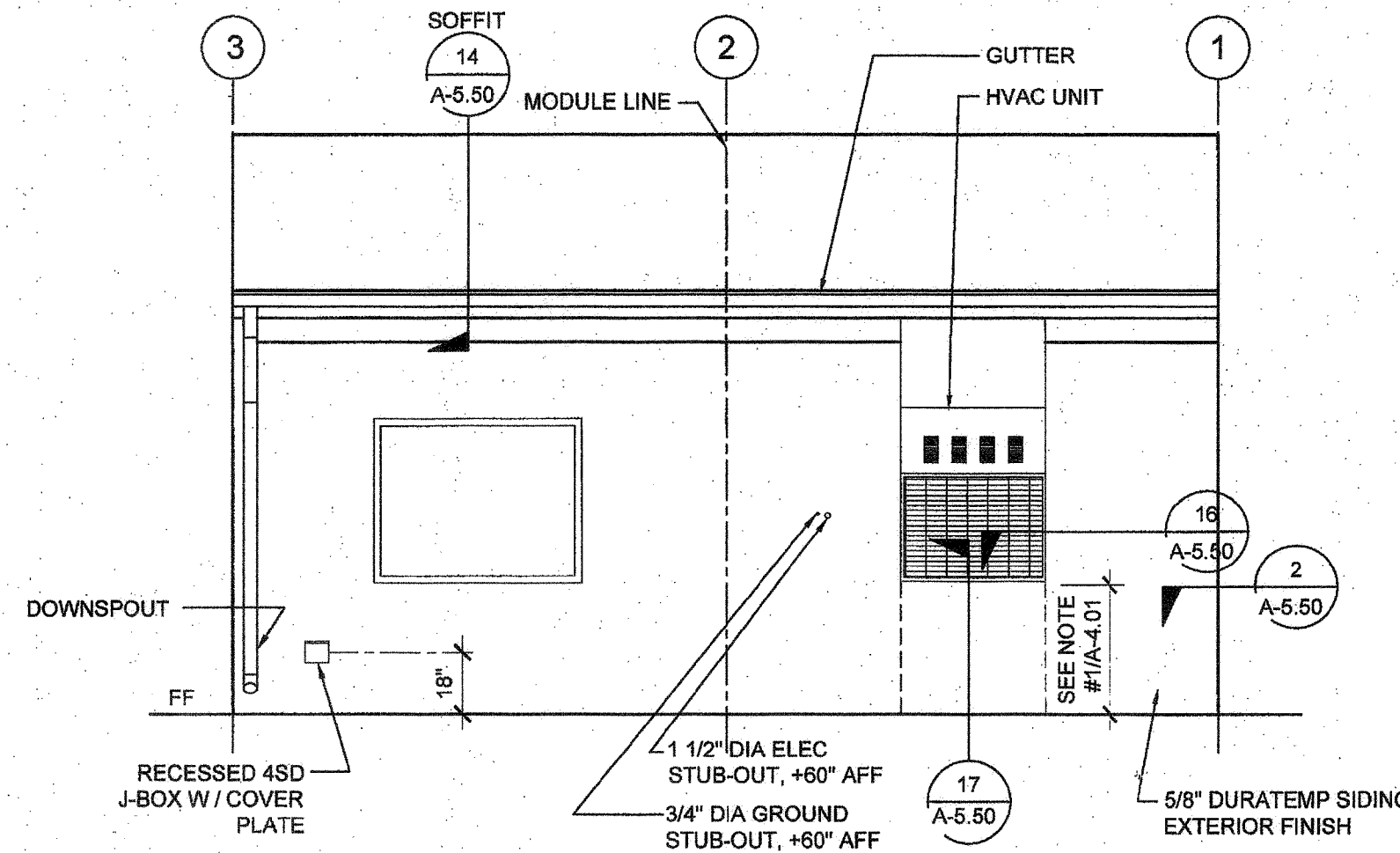
SHEET NUMBER
A-4.01N



PAINT FINISH NOTE
EXTERIOR SIDING - FLAT
EXTERIOR TRIM - SEMI GLOSS
EXTERIOR DOORS AND FRAMES - GLOSS
GUTTERS & DOWNSPOUTS - SEMI GLOSS

EXTERIOR ELEVATIONS - FRONT - DUAL SLOPE

SCALE: 1/4" = 1'-0" 1



EXTERIOR ELEVATIONS - REAR - DUAL SLOPE

SCALE: 1/4" = 1'-0" 2

SCALE: 1/4" = 1'-0" 3

SCALE: 1/4" = 1'-0" 4