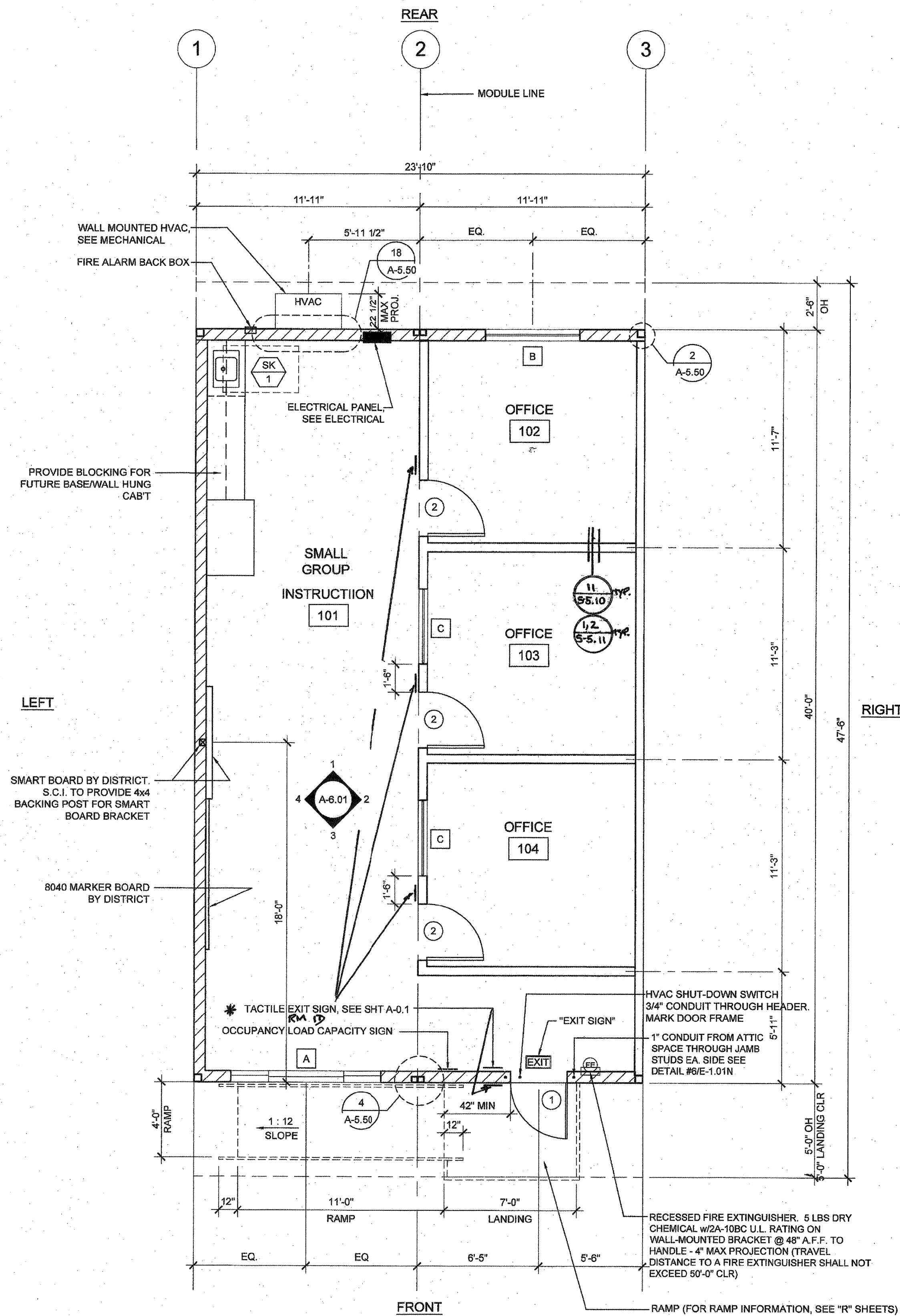


OPTIONAL LEFT HAND FLOOR PLAN



RIGHT HAND FLOOR PLAN

WALL LEGEND

- NOMINAL 4" WALL STUD
- NOMINAL 6" WALL STUD
- NOMINAL 8" WALL STUD

SYMBOLS LEGEND

- WINDOW PER SCHEDULE SHEET A-0.2N
- DOOR PER SCHEDULE SHEET A-0.2N
- 80" CIRCLE CLEAR SPACE
- 30"x48" CLEAR SPACE

*REFER TO 7/1.01 - PROVIDE MIN. 19" TOE CLEARANCE DEPTH GREATER THAN 17" SHOWN IN DET.

PLUMBING FIXTURE SCHEDULE

SYMBOL	FIXTURE	COLD WATER	HOT WATER	WASTE	VENT
SK 1	CLASSROOM SINK	1/2"	-	2"	2"

FIXTURE DESCRIPTION (AS CALLED OR APPROVED EQUAL)

SK 1 ELKAY PSDKADQ2517C STAINLESS STEEL SINK W/ CENTER FAUCET HOLE, HAWES 5054LF DRINKING FOUNTAIN BUBBLER, HAWES 5510LF COOSENECK FAUCET, AQUA PURE WATER FILTER AP717; PROVIDE COMPLETE ASSEMBLY FOR SINK INSTALLATION INCLUDING BRASSCRAFT ANGLE STOPS, BRASSCRAFT COPPER FAUCET RISER, BRASSCRAFT SPEEDI-PLUMB PLUS BRAIDED CONNECTOR, P-TRAP.

PLUMBING SCHEDULE

THESE DRAWINGS AND ALL MATERIAL CONTAINED HEREIN ARE THE PROPERTY OF SILVERCREEK INDUSTRIES, INC. (SCI Inc) AND SHALL NOT BE REPRODUCED, COPIED OR OTHERWISE DISPOSED OF DIRECTLY OR INDIRECTLY AND SHALL NOT BE USED IN WHOLE OR IN PART TO ASSIST IN THE MAKING OF OR FOR THE PURPOSE OF FURNISHING ANY INFORMATION FOR THE MAKING OF DRAWINGS, PRINTS, APPARATUS OR PARTS THEREOF WITHOUT THE FULL KNOWLEDGE AND WRITTEN CONSENT OF SCI Inc. ALL PATENTABLE MATERIAL CONTAINED HEREIN AND ORIGINATING WITH SCI Inc SHALL BE THE PROPERTY OF SCI Inc.

SILVER CREEK INDUSTRIES, INC.



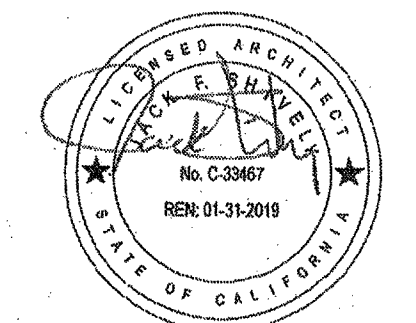
2830 BARRETT AVE, PERRIS, CALIFORNIA 92571
PHONE: 951-943-5393 FAX: 951-943-2211

PROJECT NAME:

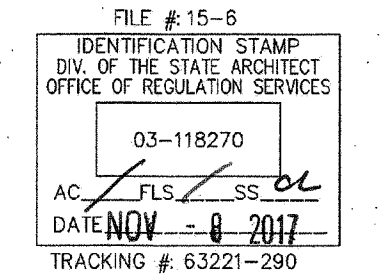
24x40 STOCKPILE OFFICE BUILDING

SHEET TITLE:

PROJECT SPECIFIC FLOOR PLAN



ARCHITECT OF RECORD
SUBMISSION DATE



PROJECT SPECIFIC STATE AGENCY APPROVAL

IDENTIFICATION STAMP
DIV. OF THE STATE ARCHITECT
04 118284
DATE MAY 18 2017

ORIGINAL PC STATE AGENCY APPROVAL

REVISIONS

SILVER CREEK INDUSTRIES

PROJECT NO: 10814
DRAWN BY:
SCALE: AS NOTED
DATE: 04-20-17

SHEET NUMBER

A-1.01N