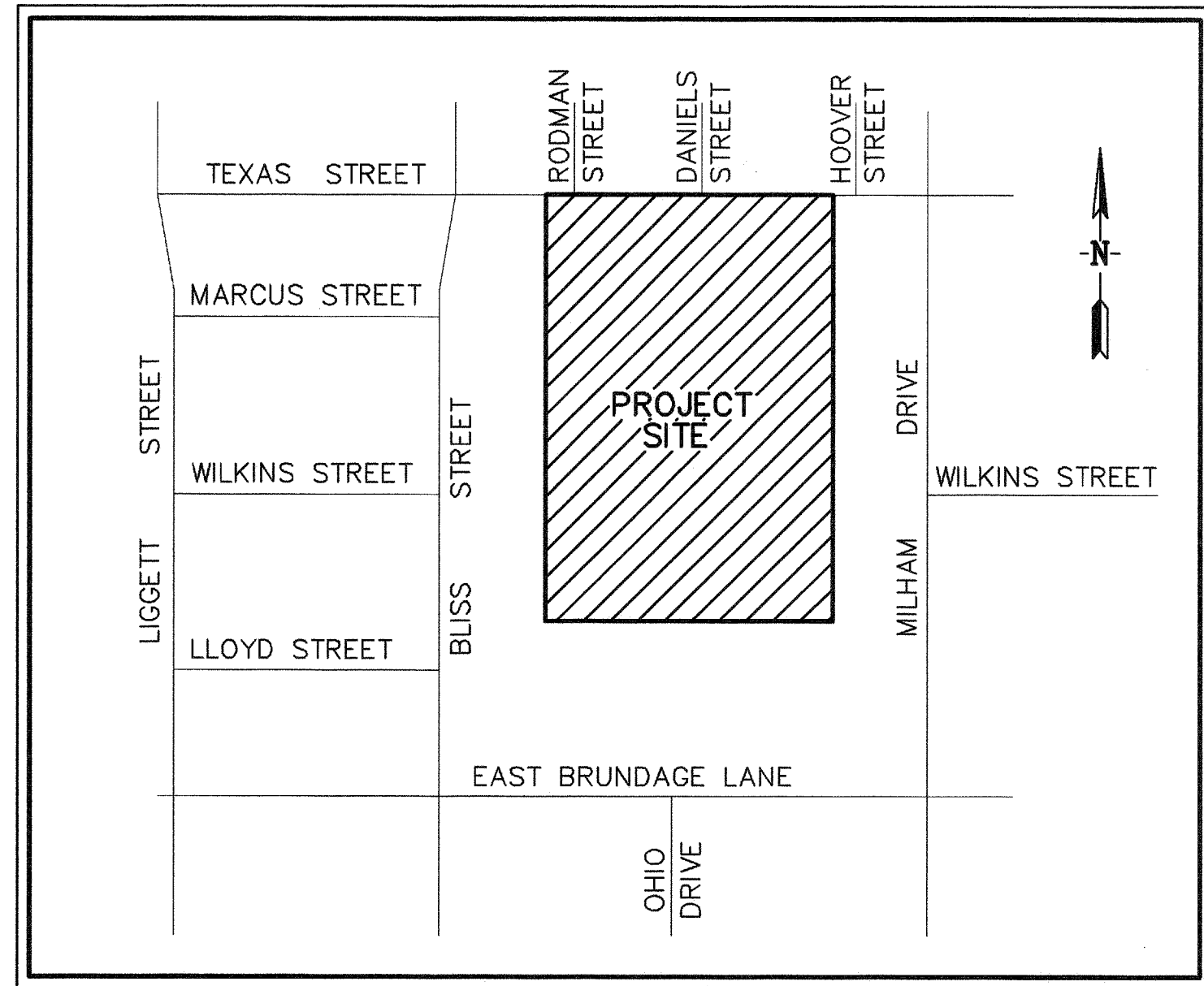


# GRADING AND SITE IMPROVEMENT PLANS FOR NEW PARKING LOT FREMONT ELEMENTARY SCHOOL



**VICINITY MAP**  
NO SCALE

**SHEET No. INDEX**

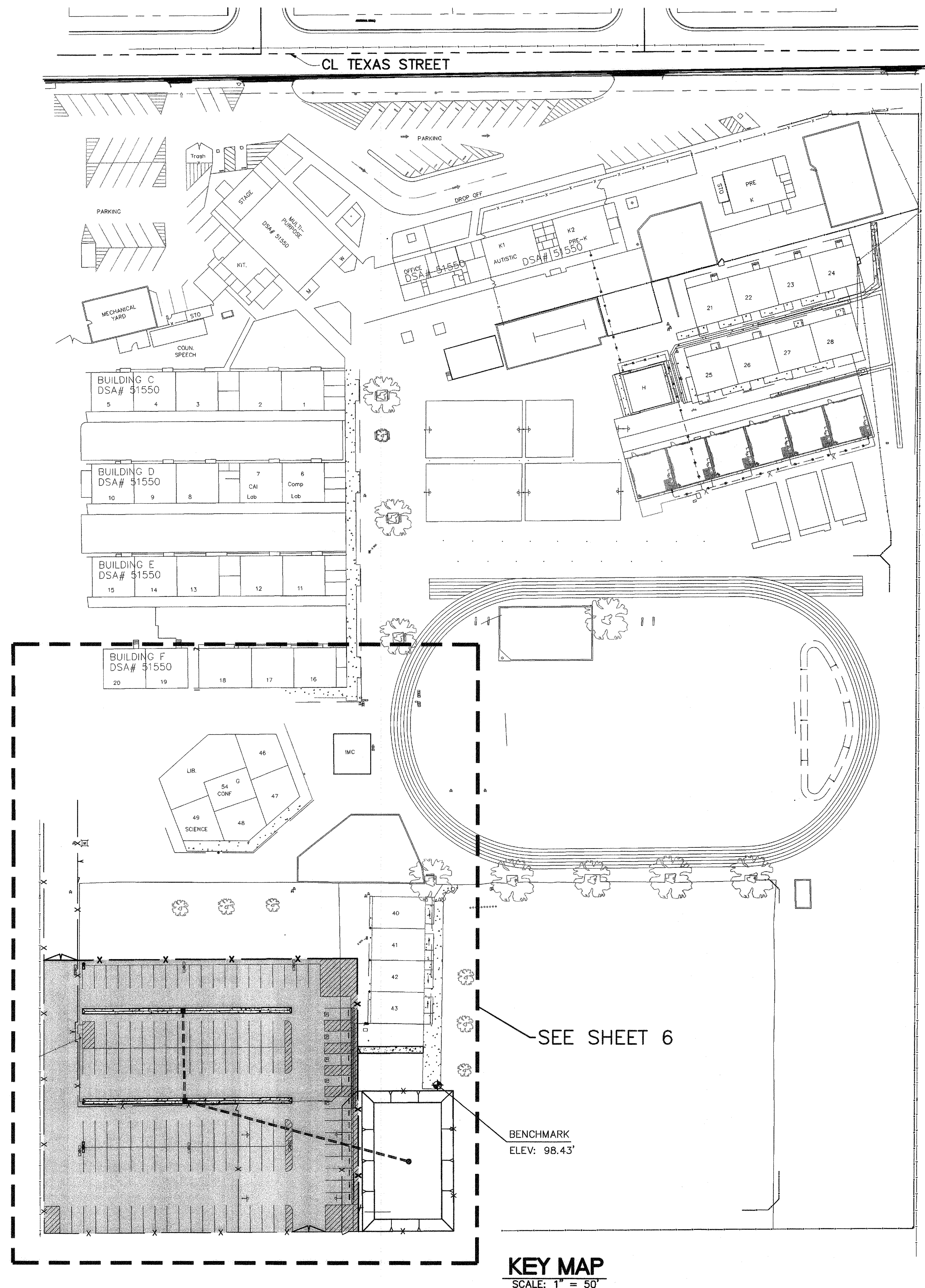
- ① COVER SHEET
- ② NOTES AND SPECIFICATIONS
- ③ NOTES AND SPECIFICATIONS
- ④ DETAILS AND TYPICAL SECTIONS
- ⑤ EXISTING CONDITIONS & DEMOLITION
- ⑥ GRADING AND SITE IMPROVEMENT PLAN

**STATISTICS:**

1. ASSESSOR'S PARCEL NUMBER: 139-440-08 & 139-440-09
2. APPROXIMATE ACREAGE: ~14.5 TOTAL ACRES
3. WATER: ON-SITE
4. SEWER DISPOSAL: ON-SITE
5. DRAINAGE: ON-SITE
6. EXISTING LAND USE: SCHOOL SITE
7. PROPOSED LAND USE: SCHOOL SITE
8. FIRE PROTECTION: C.O.B.
9. ADDRESS: 607 TEXAS STREET  
BAKERSFIELD, CA 93307

**BENCHMARK USED:**

SET NAIL AT TOP OF CURB AS SHOWN ON THIS PLAN WITH ELEVATION = 98.43' (ASSUMED DATA)

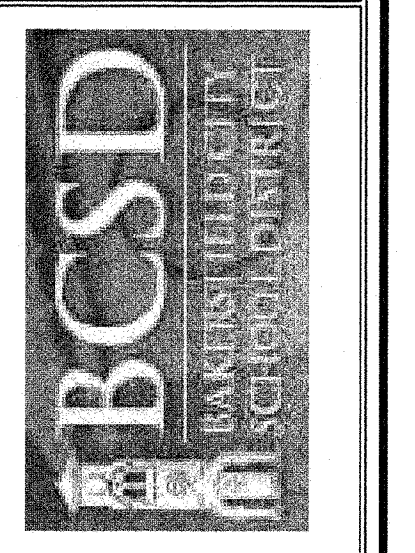


**KEY MAP**  
SCALE: 1" = 50'



<p>6-14-17 MATTHEW K. VOVILLA RCE 43130 EXP. 3/31/18</p>	<p>DATE 06/20/17 REMOVED TREE WELLS, ADDED TRUNCATED DOMES, &amp; REVISED PARKING LAYOUT. ADJUSTED GRADES FOR REMOVAL OF POR. OF PAVEMENT. REVISIONS PER AS-BUILT LIGHT AND GRATE LOCATIONS. REVISIONS PER ISA COMMENTS.</p>
--	--

**GRADING & SITE IMPROVEMENT PLANS  
FOR NEW PARKING LOT  
FREMONT ELEMENTARY SCHOOL  
607 TEXAS STREET**



IDENTIFICATION STAMP  
DIV. OF THE STATE ARCHITECT

03 118 270  
AC / FLS / SS  
Date: JUN 16 2017

JOB No.:	17-778
DWG NO.:	GRADING
DATE:	06/14/2017
DRAWN BY:	ADA
CHECKED BY:	MKV
SHEET	1
OF 6 SHEETS	

**LAV // Pinnacle Engineering**  
5401 Business Park South, Suite 204, Bakersfield, CA 93309  
Phone: (661) 869-0184 Fax: (661) 377-0076