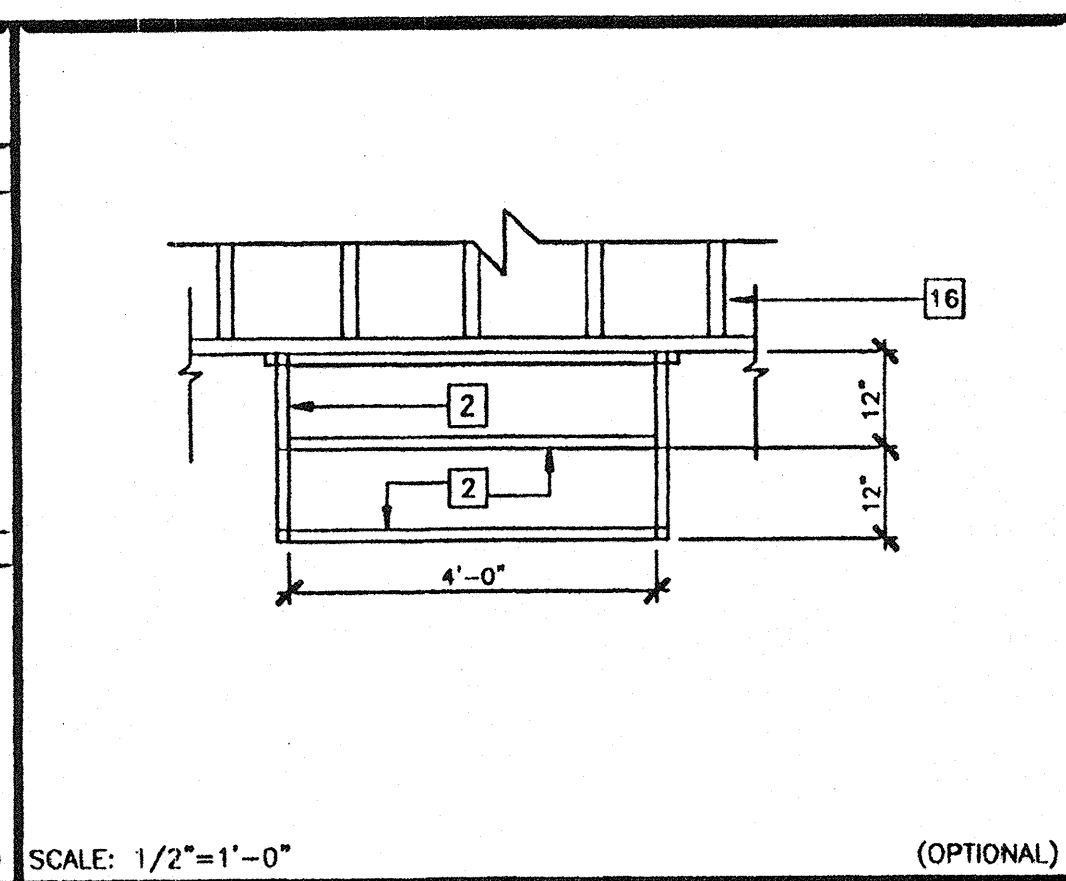
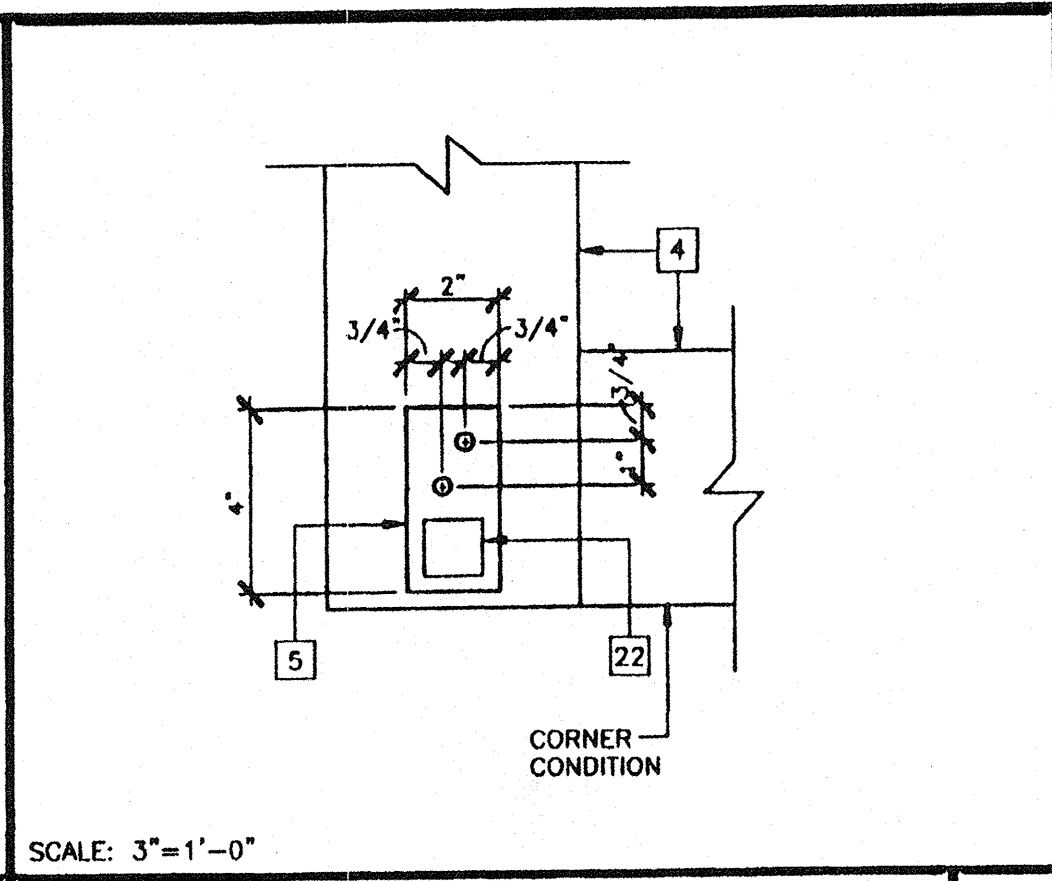


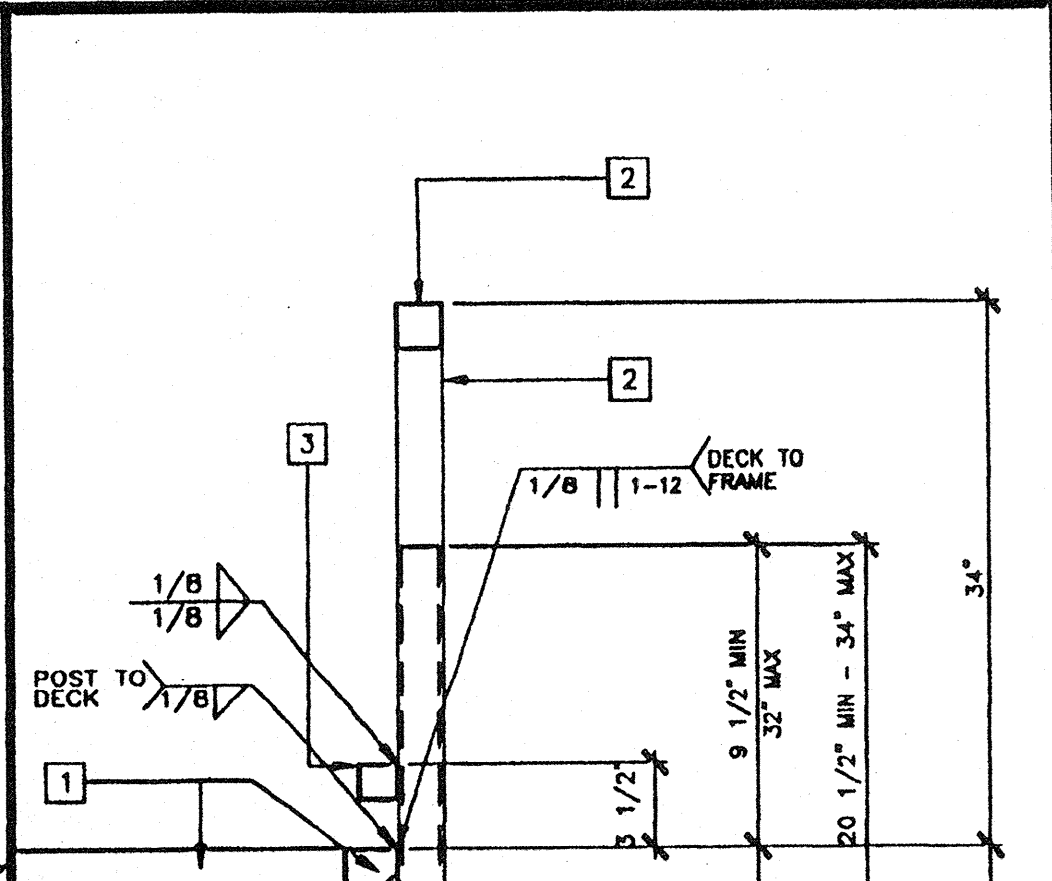
STAIR SECTION 16



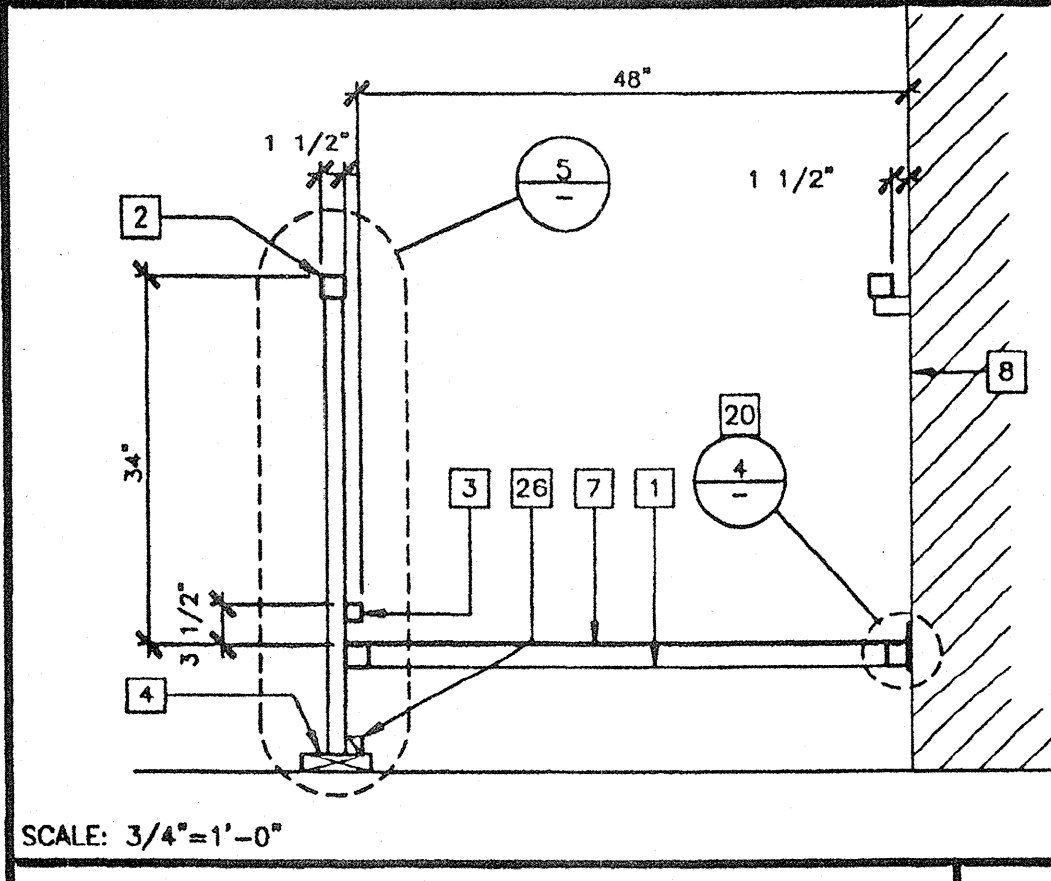
STAIR FRAMING PLAN 12



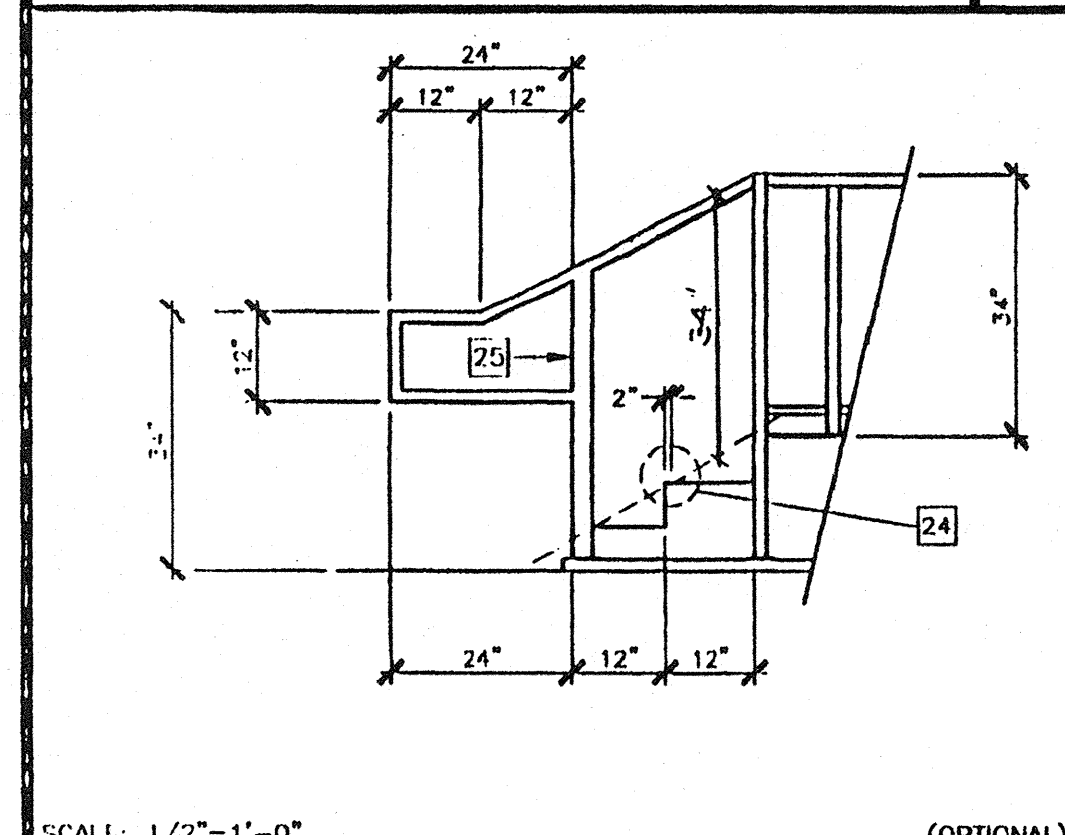
ADJUSTABLE LEG BASE PLATE 8



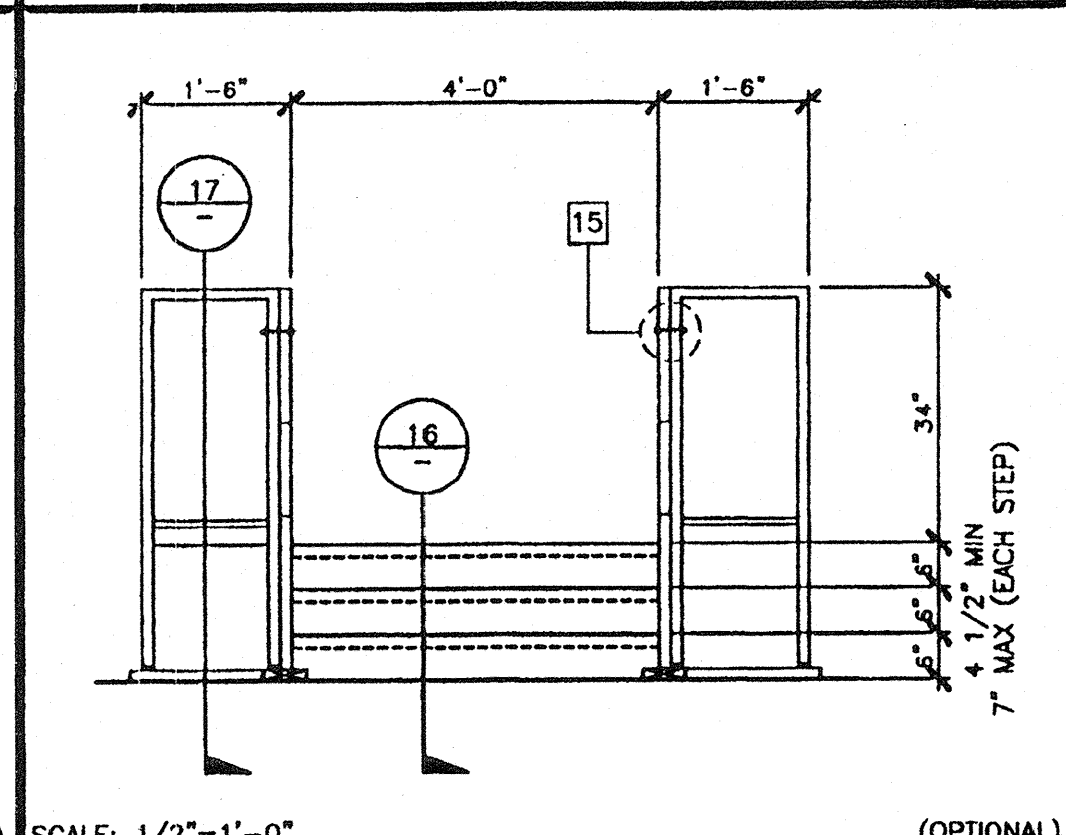
ADJUSTABLE LEG 5



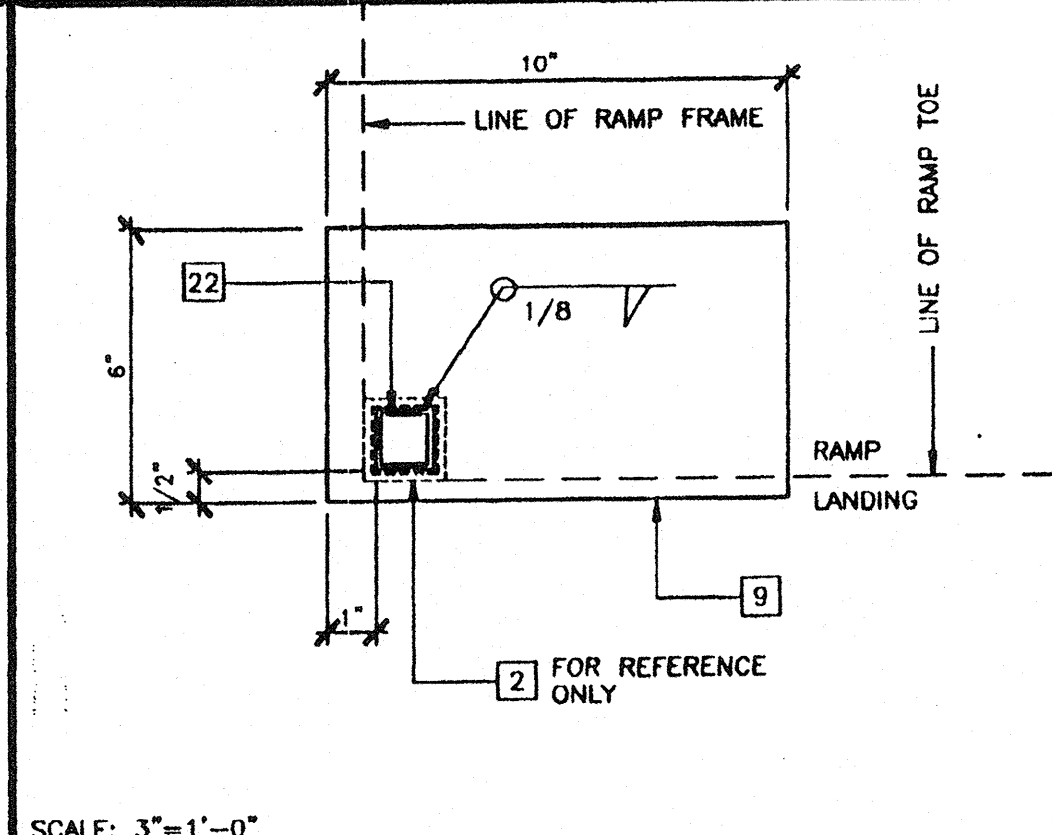
SECTION AT RAMP 1



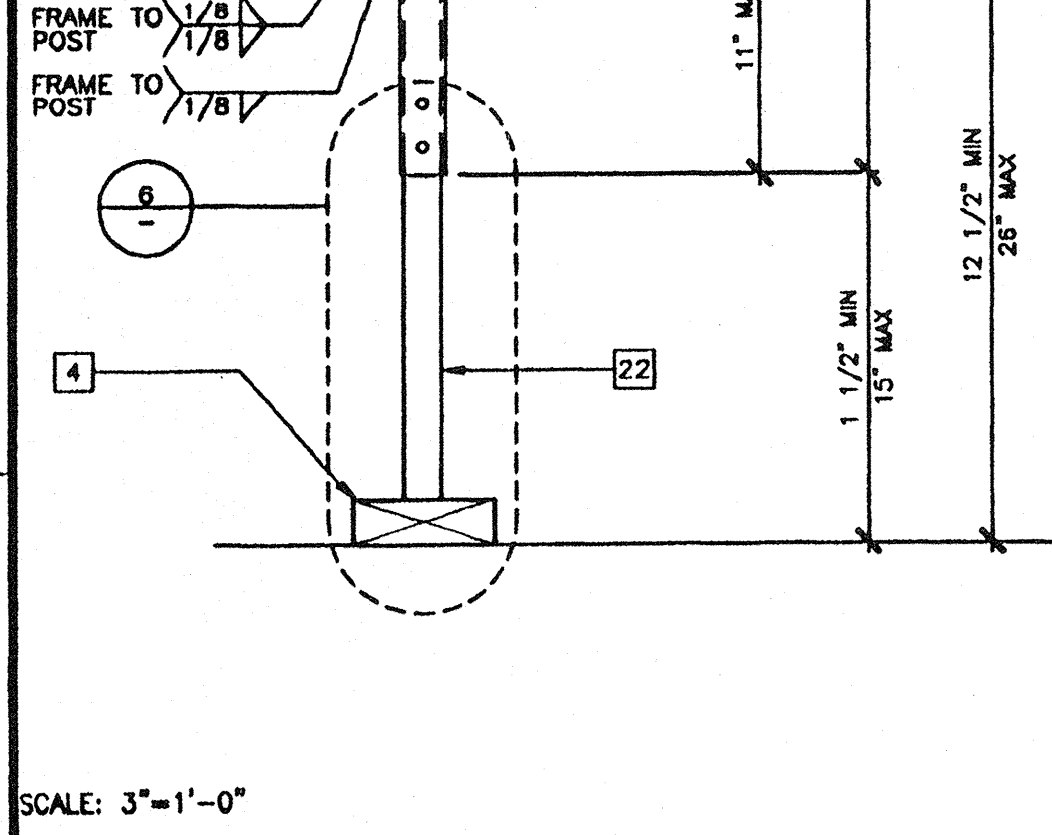
STAIR ELEVATION 17



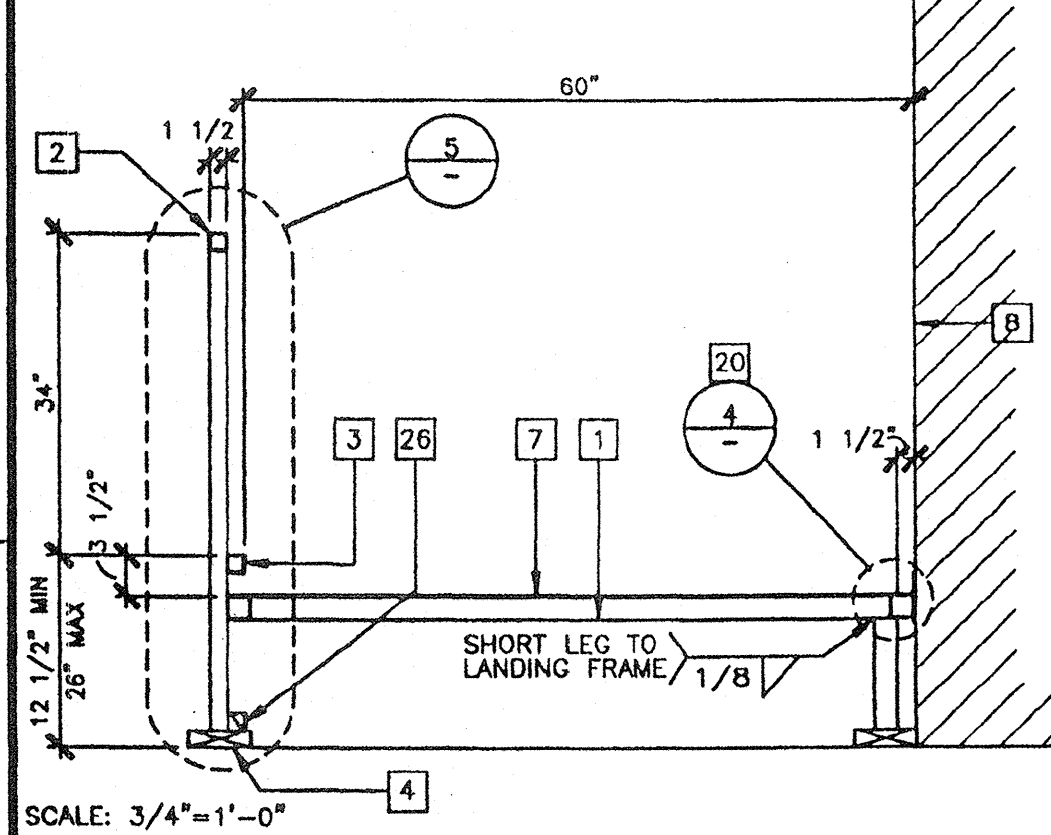
STAIR ELEVATION 13



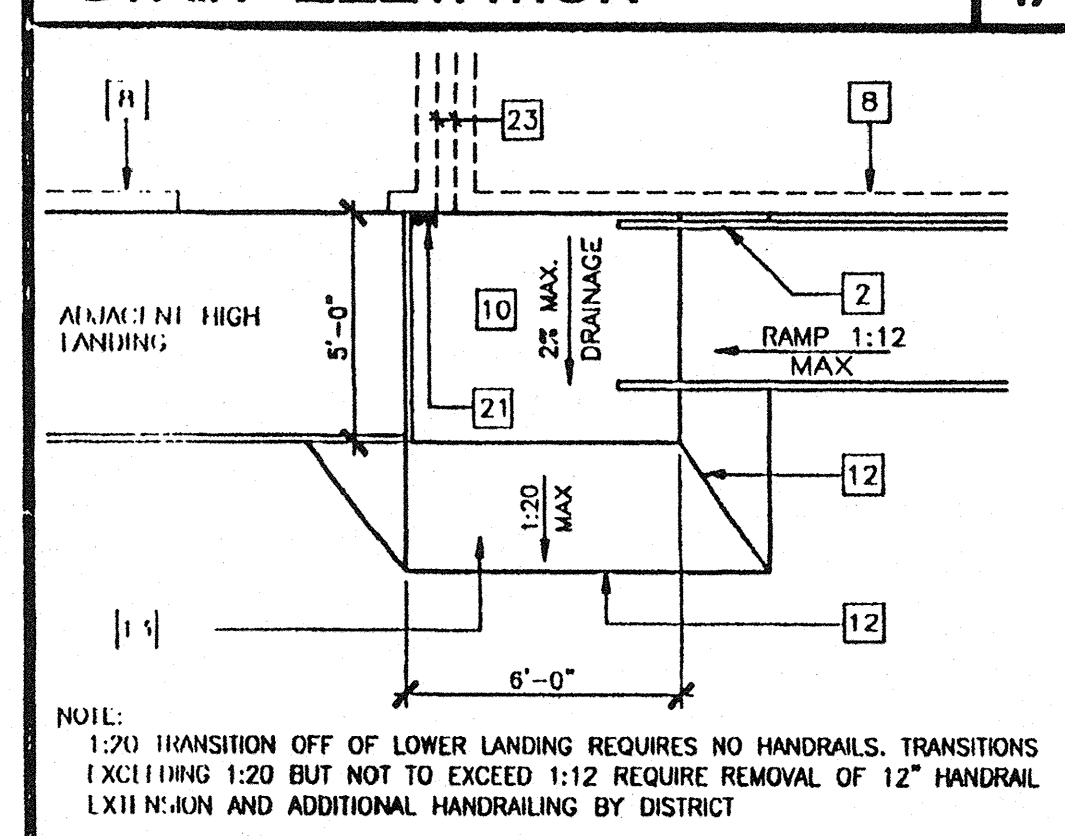
BASE PLATE AT RAMP TOE 9



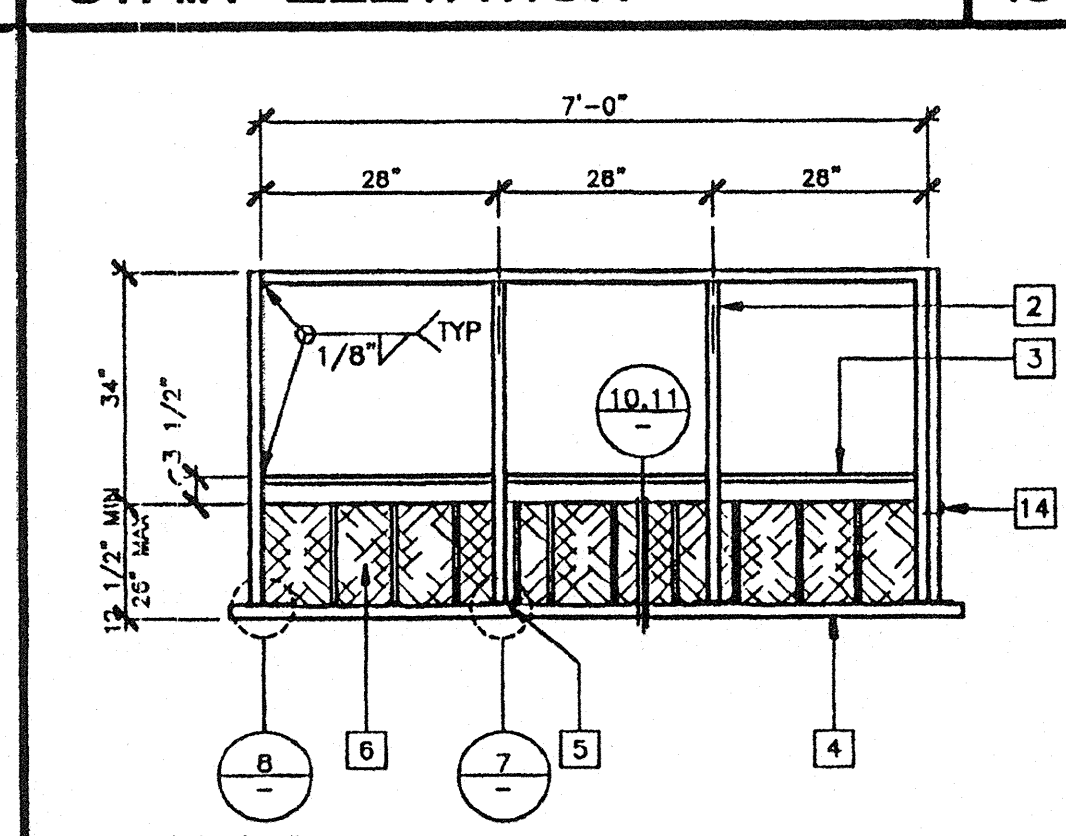
ADJUSTABLE LEG 6



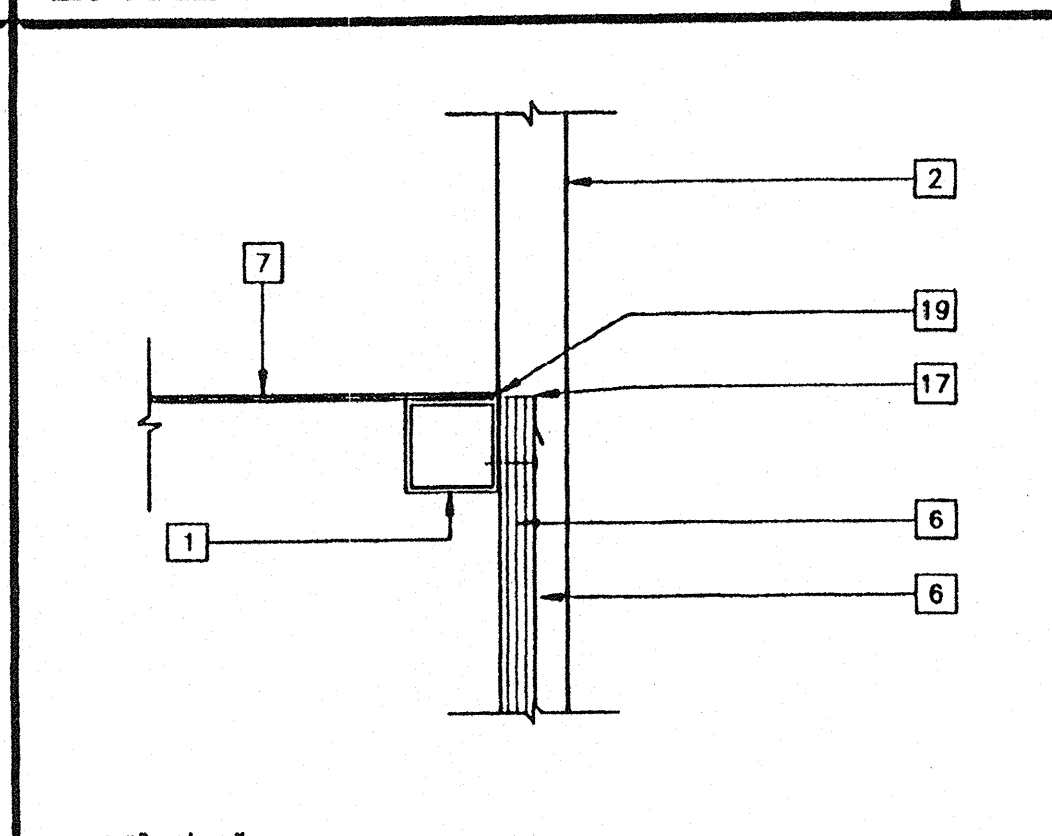
SECTION AT LANDING 2



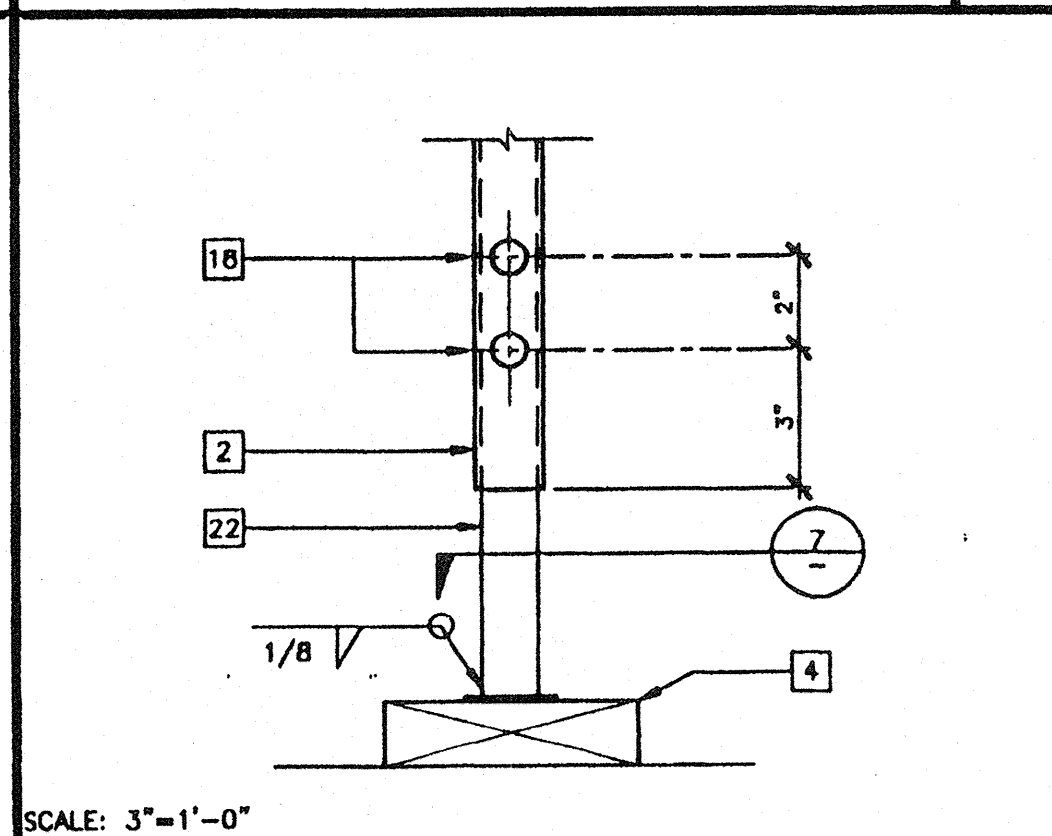
RAMP TRANSITION 18



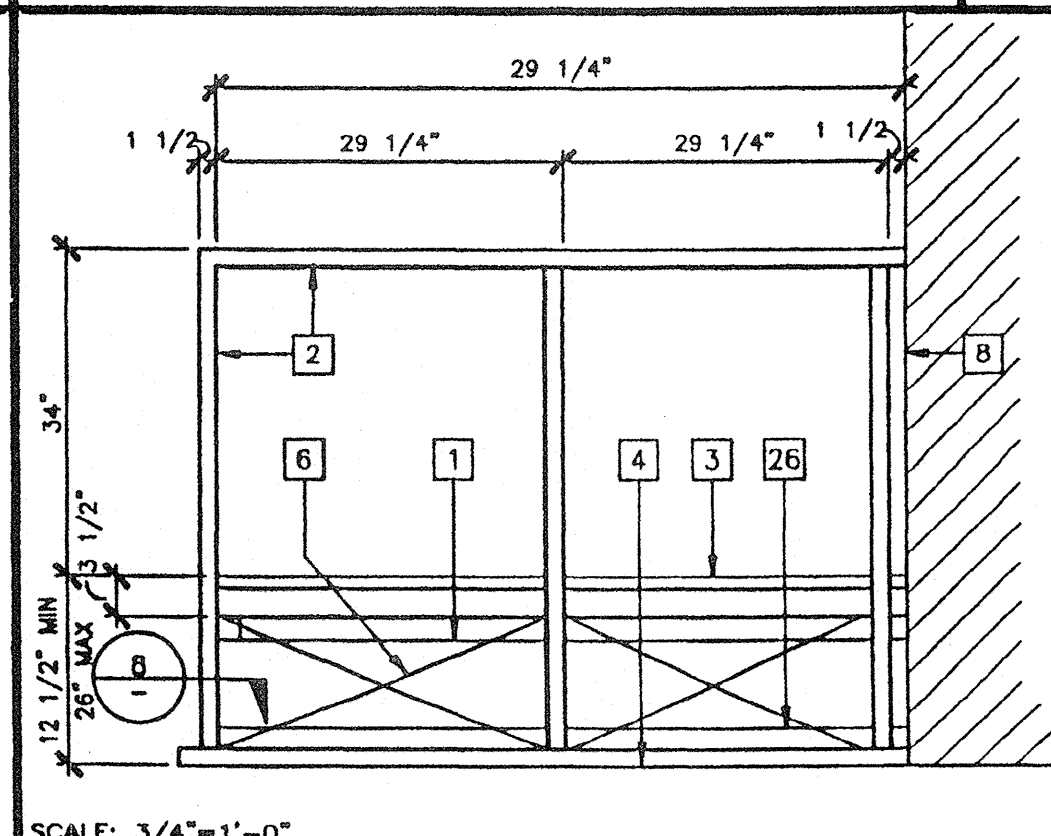
LANDING ELEVATION 14



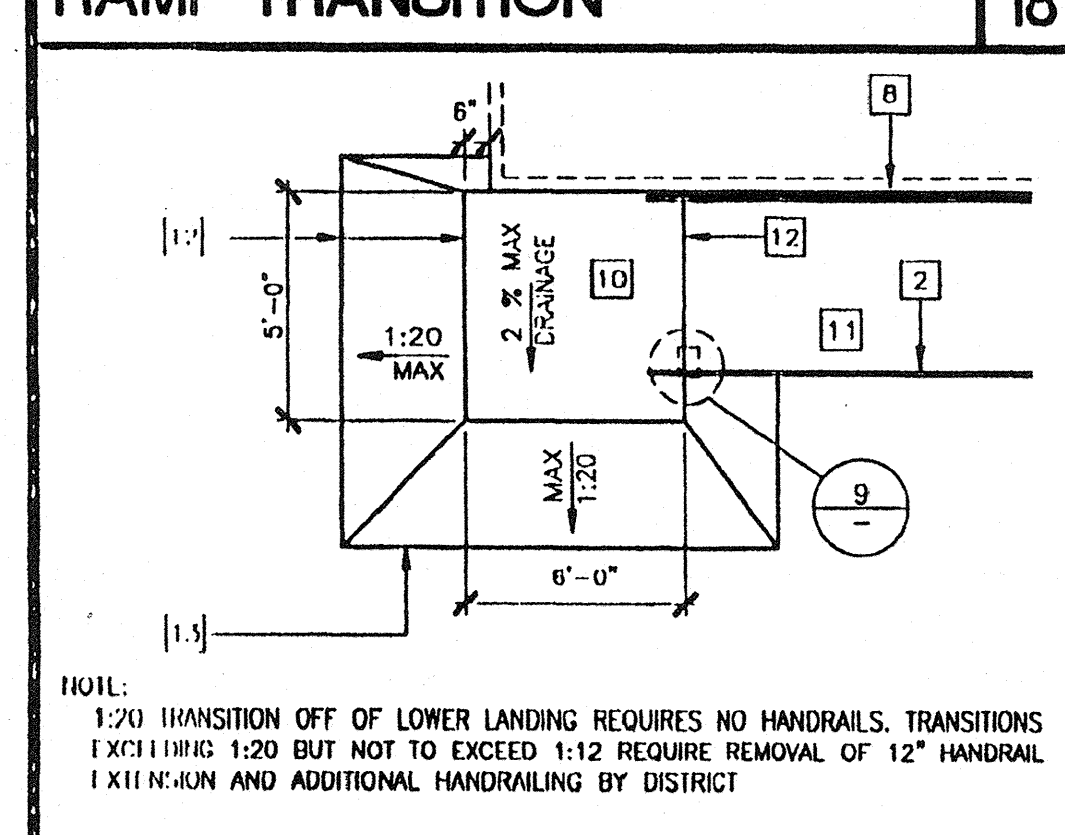
SKIRT FLASHING 10



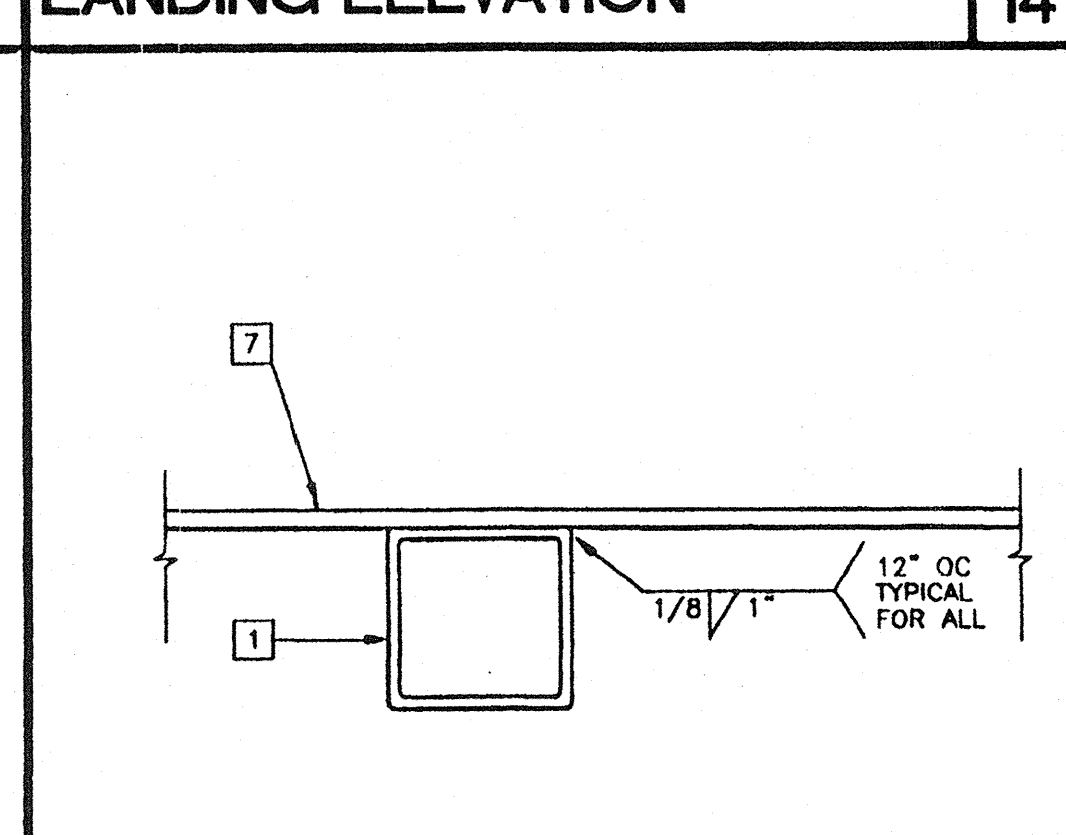
ADJUSTABLE LEG 7



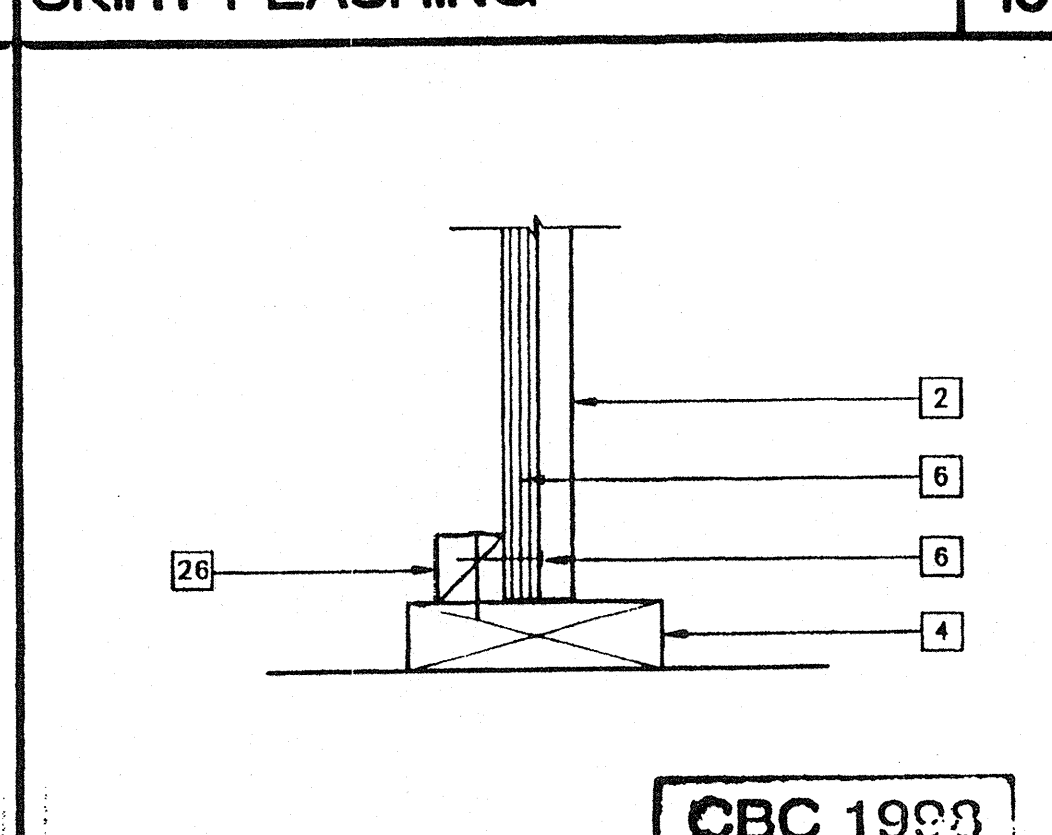
END ELEVATION 3



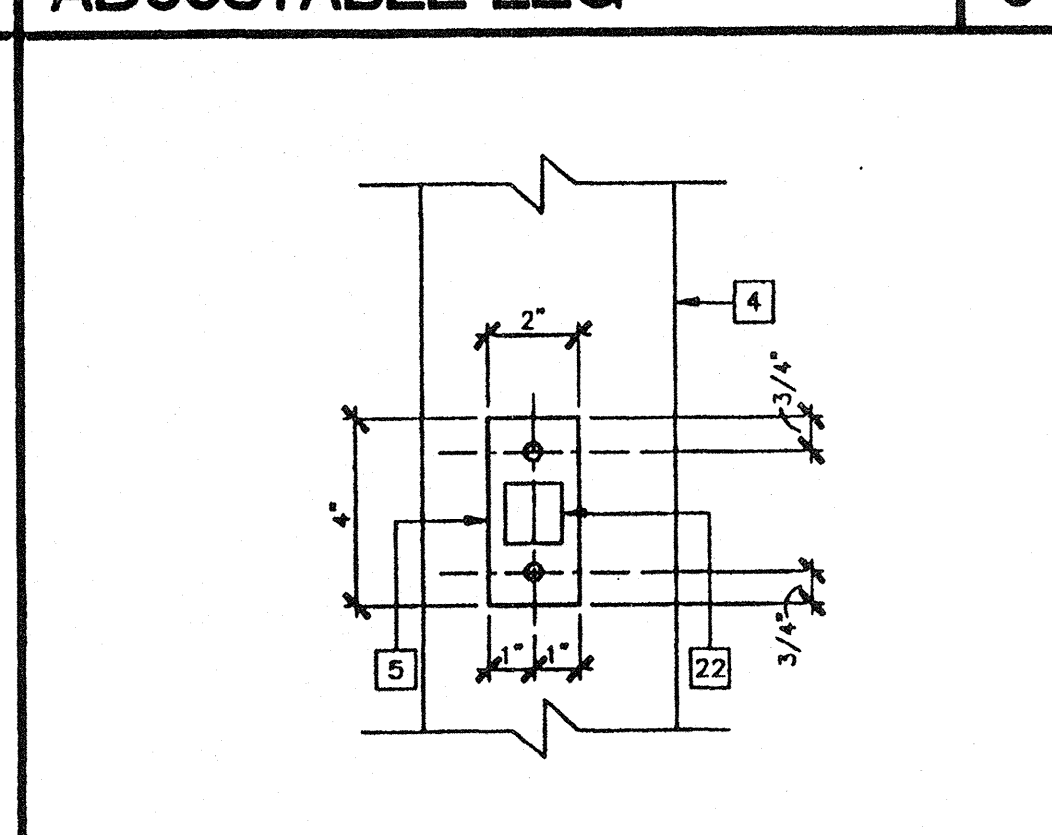
RAMP TRANSITION 19



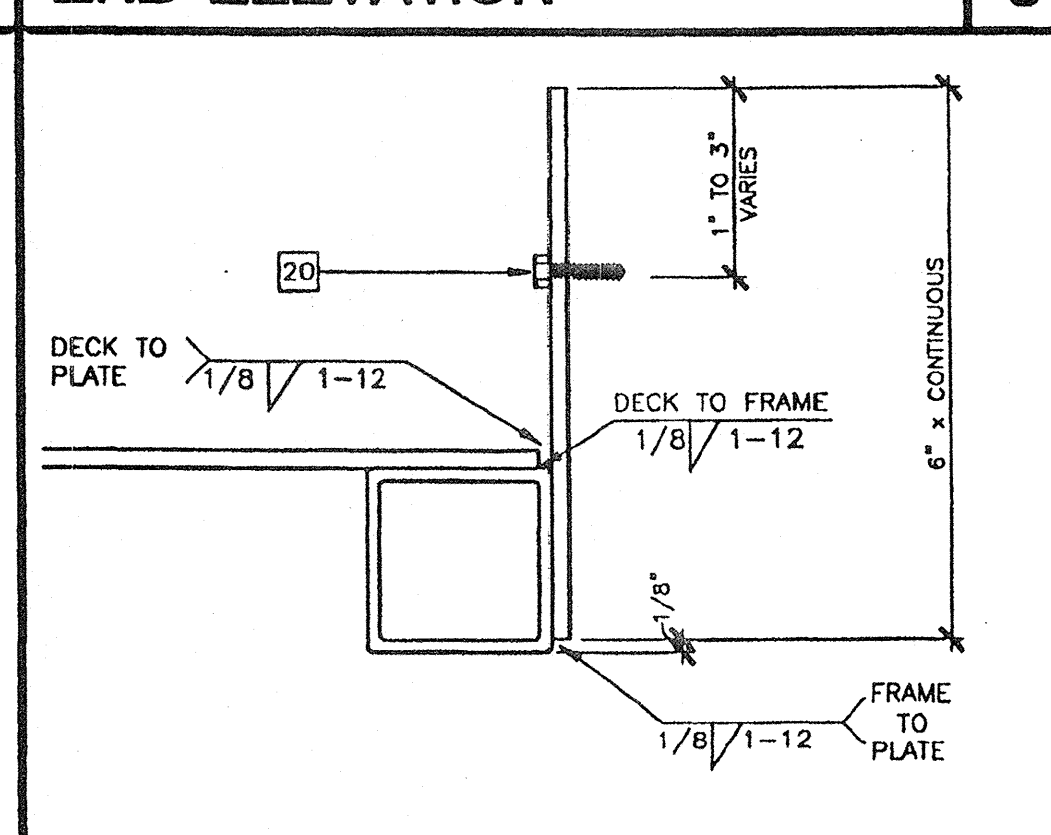
SECTION AT INTERIOR FRAME 15



SKIRT AT SILL PLATE PC 11



ADJUSTABLE LEG BASE PLATE 7



SECTION AT PLATE 4

- KEY NOTES**
- TS 2"x2"x14 GA
  - TS 1 1/2"x1 1/2"x14 GA (Fy = 39 KSI). ROUNDED OR RIVELED AT CORNERS.
  - TS 1"x1"x16 GA WHEELCHAIR GUIDE
  - 2"x6" PRESSURE TREATED SILL PLATE
  - 2"x4"x12 GA BASE PLATE WITH 2-1/4"x1" LAGS
  - SKIRTING: PLYWOOD TO MATCH BUILDING SIDING. BLOCK ALL EDGES. ATTACH WITH 8d AT 6" OC EDGES AND 12" OC FIELD. AT EDGE CONNECTION TO TS, USE #14x2" TLK SCREWS AT 6" OC
  - 12GA METAL DECK: NON-SLIP SURFACE. DESIGN COEFFICIENT OF FRICTION GREATER THAN 0.2. MAINTAINABLE FOR 1 YR. PROVIDE ROUNDED OR RIVELED EDGES ON STAIR NOSING.
  - EXISTING BUILDING.
  - 6"x10"x12 GA BASE PLATE AT RAMP TOE.
  - LOWER LANDING BY DISTRICT
  - RAMP BY MODTECH
  - FLUSH TRANSITION
  - PAVE BY DISTRICT
  - 3"x1"x3"-0"x10 GA BENT PLATE
  - FASTEN POSTS WITH 3/8" DIA THRU BOLT, TYPICAL
  - RAMP LANDING, TYPICAL
  - 26 GA FLASHING
  - 3/8" DIAx2" LONG MB WITH NUT & WASHER
  - CAULKING
  - 6"x10GA CONTINUOUS PLATE WITH #14x2" TEK SCREWS AT 9" OC INTO WOOD OR FOUNDATION BLOCKS OR #14x2" TEK SCREWS INTO METAL AT 9" OC
  - PROVIDE DIVERSION FOR WATER FROM DOWNSPOUT FOR THIS CONDITION. BY DISTRICT
  - TS 1 1/4"x1 1/4"x14 GA (Fy = 39 KSI)
  - 4" MINIMUM BUILDING SEPARATION
  - 2" SLIP RESISTANT WARNING STRIPES MAX 1" FROM EVERY STAIR NOSING. USE CONTRASTING COLOR.
  - TS 2 1/2"x1 1/2"x8 GA ASTM A500 GRADE A
  - 2"x2" NAILER WITH 16d AT 12" OC

**REVISIONS**

1		
2		
3		
4		

Electrical Engineer's Seal  
Mechanical Engineer's Seal  
Architect's Seal

IDENTIFICATION STAMP  
DIV. OF THE STATE ARCHITECT  
OFFICE OF REGULATION SERVICES  
PC-04  
101419  
DATE OCT 25 1999

**MODTECH INC.**  
2830 BARRETT AVENUE  
PERRIS, CALIF. 92572  
PH (909) 943-4014  
FAX (909) 940-0427

PROJECT NUMBER: © MODTECH, INC. 1999

IDENTIFICATION STAMP  
DIV. OF THE STATE ARCHITECT  
OFFICE OF REGULATION SERVICES  
APPROVED  
DATE 7/24/14  
DATE MAR 09 2000

DRAWN BY:  
DATE:  
CHECKED BY: SS  
DATE: 10/22/99  
MODTECH Index No.  
**R1.02**

**RAMP/LANDING DETAILS**