

### ELECTRICAL PANEL SCHEDULE

MAIN: 100 AMP 12 POLE	PANEL LOCATION: REAR/INTERIOR				FEED: REAR MOUNTING: FLUSH				
	WATTS		BREAKER		WATTS		LOAD		
LOAD	AP	BP	AP	BP	AP	BP	AP	BP	
RECEPTACLE (4)	720	20	1	1	2	2	50	3360	HVAC (3 1/2T)
RECEPTACLE/CLOCK (5)	720	20	1	3	4	-	-	3360	HVAC (3 1/2T)
				5	6	2	30	2500	HEAT STRIPS (OKW)
				7	8	-	-	2500	HEAT STRIPS (OKW)
INT/EXT LIGHTS (11)	760	20	1	9	10	-	-	40	FIRE ALARM (DEDICATED)
INT. LIGHTS (10)	700	20	1	11	12	-	-		
WATTS/PHASE	A = 7340	1480	1420				5880	5900	B = 7320
TOTAL	14810	WATTS	62	AMPS	120/240	VOLTS	SINGLE	3	THREE
NCL =	13080	WATTS							

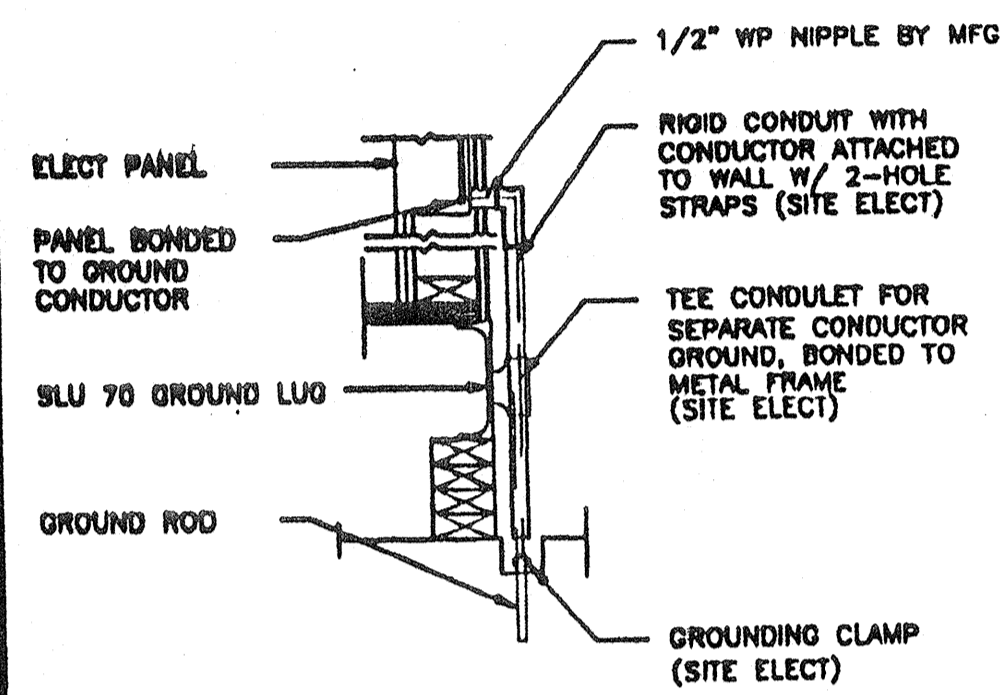
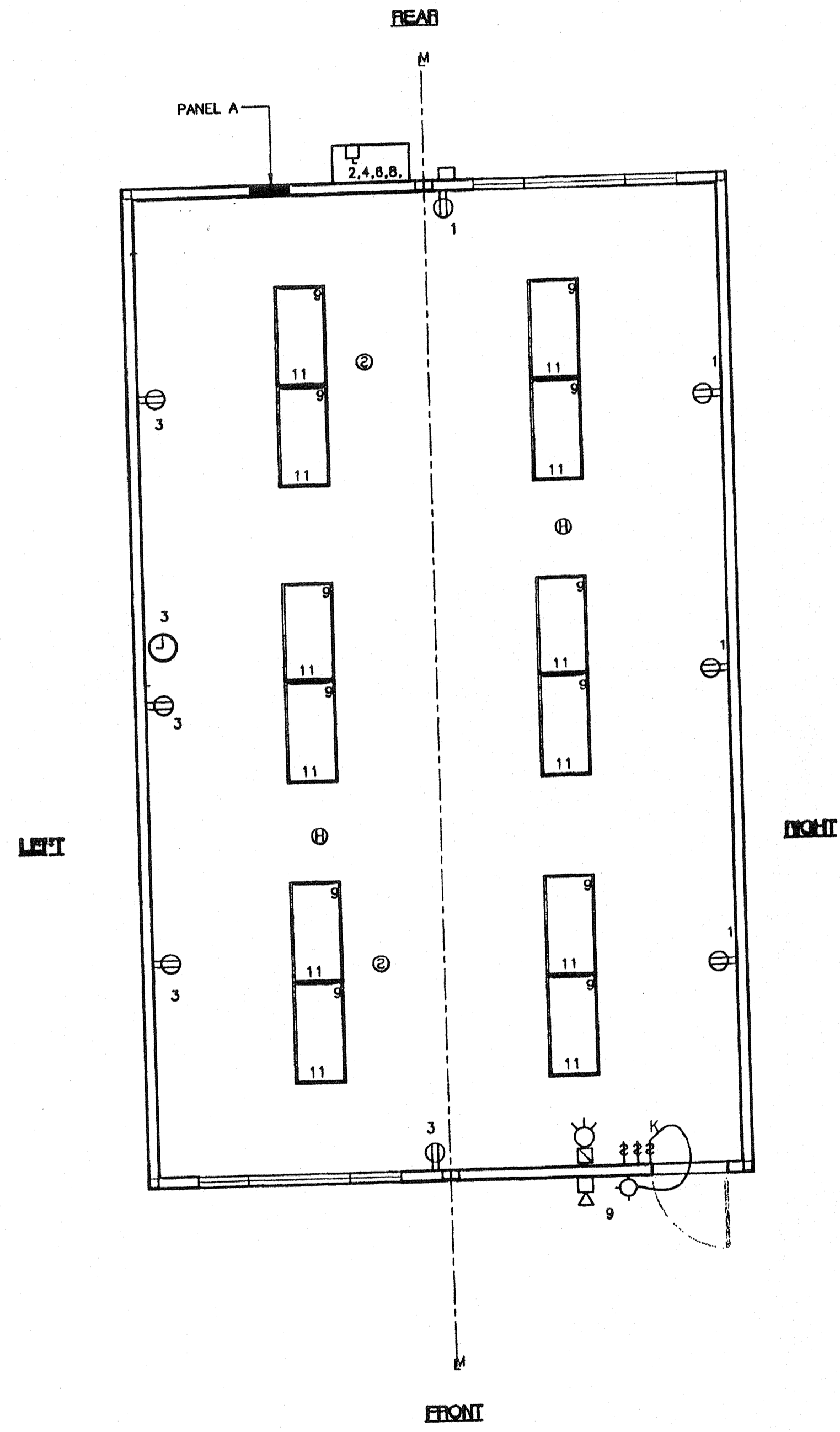
### GENERAL GROUNDING NOTES

- EACH BUILDING SHALL BE SEPARATELY GROUNDED WITH A 3/4" RD. X 8' COPPERCLAD STEEL GROUND ROD, WHERE ROCK BOTTOM IS ENCOUNTERED, ROD SHALL BE DRIVEN AT AN ANGLE NOT TO EXCEED 45 DEGREE'S FROM THE VERTICAL OR SHALL BE BURIED IN A TRENCH THAT IS AT LEAST 30" DEEP (BY SITE ELECTRICAL)
- TESTING: TEST FOR RESISTANCE TO GROUND, IF RESISTANCE EXCEEDS 25 OHMS, INSTALL ADDITIONAL GROUND RODS SEPARATED AT LEAST 6'-0" UNTIL RESISTANCE IS REDUCED TO 25 OHMS OR LESS. (BY SITE ELECTRICAL)
- APPROVAL OF THIS PLAN DOES NOT CONSTITUTE APPROVAL OF THIS FIRE ALARM FOR ALL SITES, THE FIRE ALARM SYSTEM AND/OR COMPONENTS MAYBE REQUIRED TO BE CHANGED DUE TO SITE LOCATION, EXISTING CONDITIONS OR INCOMPATIBLE COMPONENTS.
- GROUNDING TEST SHALL BE DONE IN THE PRESENCE OF THE PROJECT INSPECTOR, ALL GROUNDING SHALL BE IN ACCORDANCE WITH CEC ARTICLE 250.

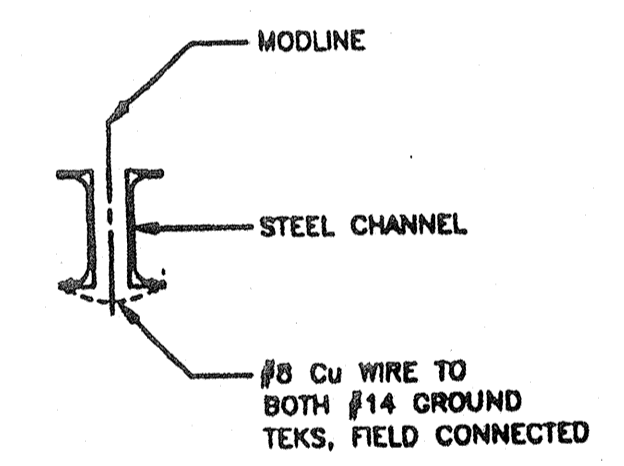
### ELECTRICAL LEGEND

- 2'x4' 4 TUBE FLUORESCENT LIGHT FIXTURE
- EXTERIOR LIGHT FIXTURE AT +93" AFF
- ⋈ SWITCH AT +48" AFF
- ⊖ DUPLEX WALL RECEPTACLE 15A 125V 3 WIRE AT +18" AFF UNW
- ⊖ HVAC UNIT (HV)
- ⊖ 4SD J-BOX FOR FIRE ALARM PULL STATION AT +48" AFF, 3/4" CO TO ○ OR □ PULLSTRING
- ⊖ 4SD J-BOX FOR FIRE ALARM STROBE AT +80" AFF 3/4" CO TO □ PULLSTRING
- ⊖ 4SD J-BOX FOR FIRE ALARM HORN AT +18" AFF 3/4" CO TO □ PULLSTRING
- ⊖ WEATHER PROOF GUTTER BOX (6"x6"x4") AT +18" AFF RECEIVE 3/4" CO FROM FA DEVICE, PULLSTRING
- ELECTRICAL PANEL AT +80" AFF TO CENTERLINE 1 1/4" POWER NIPPLE POC, GND JUMPER BY SITE ELECT
- ⌚ CLOCK AT +90" AFF
- Ⓛ DATA LINE
- Ⓢ 4SD BOX FOR OPTIONAL SMOKE DETECTOR (CFL) \*
- Ⓢ 4SD BOX FOR OPTIONAL SMOKE DETECTOR (ATTIC) \*

\* SMOKE & HEAT DETECTORS SHOWN ARE FOR OPTION AUTOMATIC DETECTION. OF ELECTED AS AN OPTION THEY MUST BE PROVIDED BY DISTRICT. NO PROVISIONS WILL BE MADE UNDER THIS CONTRACT.



### TYP GROUNDING DETAIL 1



### GROUND JUMPER • MOD LINE 2

### NOTES

1. SCHOOL EQUIPMENT ANCHORAGE  
THE FOLLOWING IS FOR THE ARCHITECTS INFORMATION ONLY:  
THE SEISMIC ANCHORAGE OF ELECTRICAL EQUIPMENT SHALL CONFORM TO COR TITLE 24, SECTION 1632A AND TABLE 16A-0. ANCHORAGE DETAILS FOR ROOF/FLOOR MOUNTED EQUIPMENT WEIGHING LESS THAN 400 LBS & HUNG EQUIPMENT WEIGHING LESS THAN 20 LBS MAY BE OMITTED FROM THE PLANS.  
FOR ELECTRICAL DRAWINGS:  
ALL ELECTRICAL EQUIPMENT SHALL BE BRACED OR ANCHORED TO RESIST A HORIZONTAL FORCE ACTING IN ANY DIRECTION USING THE FOLLOWING CRITERIA

EQUIPMENT ON GRADE	20% OF OPERATING WEIGHT
EQUIPMENT ON STRUCTURE	30% OF OPERATING WEIGHT

FOR FLEXIBLY MOUNTED EQUIPMENT USE 4 TIMES THE ABOVE VALUES, AND FOR SIMULTANEOUS VERTICAL FORCE USE 1/3 TIMES THE HORIZONTAL FORCE!  
THE ABOVE VALUES ARE FOR AN IMPORTANCE FACTOR, I = 1.0 AND SEISMIC ZONE, Z = 4  
WHERE ANCHORAGE DETAILS ARE NOT SHOWN ON THE DRAWINGS THE FIELD INSTALLATION SHALL BE SUBJECT TO THE APPROVAL OF THE ARCHITECT AND THE FIELD ENGINEER OF THE OFFICE OF THE STATE ARCHITECT.

IDENTIFICATION STAMP  
DIV. OF THE STATE ARCHITECT  
OFFICE OF REGULATION SERVICES  
04 101984  
AC J W PLS / SS TB  
DATE MAR 18 2014

IDENTIFICATION STAMP  
DIV. OF THE STATE ARCHITECT  
APPROS 110000  
AC J W PLS / SS TB  
DATE 7/24/2014

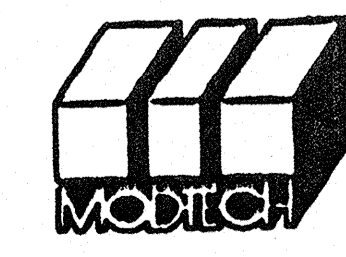
ELECTRICAL PLAN (24'x40')  
SCALE: 1/4" = 1'-0"

CBC 1999

REVISIONS	DESCRIPTION	DATE

Electrical Engineer's Seal  
Mechanical Engineer's Seal  
Architect's Seal

PC  
10419  
DATE 10/21/1999



**MODTECH INC.**  
2830 BARRETT AVENUE  
PERRIS, CALIF. 92572  
PH (909) 943-4014  
FAX (909) 940-0427

PROJECT NUMBER: © MODTECH, INC. 1999

DRAWN BY:  
DATE:  
CHECKED BY:  
DATE: 10/22/99

ELECTRICAL PLAN w/o DATA 24'x40'

MODTECH Index No. **E1.0**