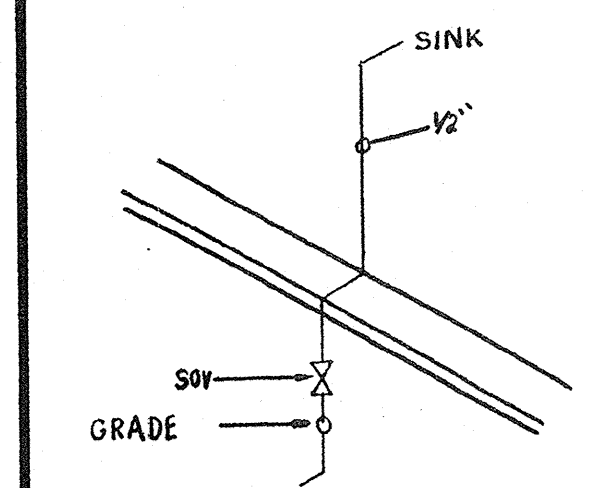


SINK CABINET WASTE



SINK CABINET COLD WATER SUPPLY

KEY NOTES

- 1 ROOF OVERHANG
- 2 HVAC UNIT (HV)
- 3 2 - 8'x4' MARKER BOARDS (SEE SPEC'S FOR TYPE)
- 4 FINISH FLOORING (FIN)
- 5 INTERIOR FINISH (FIN)
- 6 FIRE EXTINGUISHER - 5 LBS DRY CHEMICAL WITH 2A-10BC UL RATING WALL MOUNTED BRACKET, HANDLE AT 48" AFF
- 7 MODLINE (M)
- 8 ELECTRICAL PANEL
- 9 RAMP/LANDING (RMP)
- 10 SINK CABINET OPTIONAL LAV: KOHLER # K-2867 FAUCET CHICAGO 833-669
- 11 NOT USED
- 12 SIGNAGE PROVIDED AND INSTALLED BY DISTRICT PRIOR TO OCCUPANCY, SEE A.S.O.
- 13 COLD WATER SUPPLY
- 14 WASTE AND VENT P.O.C.

NOTES

- 1. METAL TAG ON ALL MODULES, MECHANICALLY ATTACHED TO REAR EXTERIOR OF BUILDING SHOW D.S.A. APPLICATION NUMBER, MANUFACTURER'S NAME AND SERIAL NUMBER.
- 2. METAL TAG MIN. 3 1/2"X1 1/2" METAL I.D. W/
1. DESIGN WIND LOAD
2. DESIGN ROOF LOAD
- 3. PROVIDE MIN. 3 1/2"X1 1/2" METAL TAG INSTALLED INSIDE THE ELECTRICAL PANEL SHOWING OPSC NUMBER AND DSA NUMBER.

IDENTIFICATION STAMP
DIV. OF THE STATE ARCHITECT
OFFICE OF REGULATION SERVICES
04 01984
AC 6 FLS SS TB
DATE MAR 08 2000

IDENTIFICATION STAMP
DIV. OF THE STATE ARCHITECT
APPROX 115000
AC 11 FLS SS TB
DATE 1/21/14

FLOOR PLAN 24x40
SCALE: 1/4" = 1'-0"

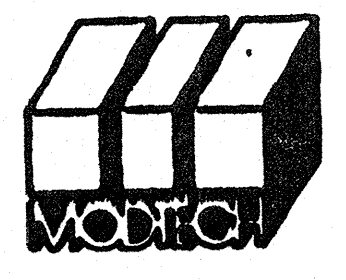
PC
CBC 1998

REVISIONS

1	CLARIFY OVERHANGS	SS
2		
3		
4		

Electrical Engineer's Seal
Mechanical Engineer's Seal
Architect's Seal

SEVERN COUNTY DEPT. OF THE STATE ARCHITECT OFFICE OF REGULATION SERVICES
PC-04
10149
DATE 06/23/99



MODTECH INC.
2830 BARRETT AVENUE
PERRIS, CALIF. 92572
PH (909) 943-4014
FAX (909) 940-0427

PROJECT NUMBER: © MODTECH, INC. 1999

DRAWN BY:
DATE:
CHECKED BY: SS
DATE: 10/22/99

FLOOR PLAN
A1.0

FILE PATH: 2440-0-A1-01.DWG PROJECT NO. 3405 PC-04-101419