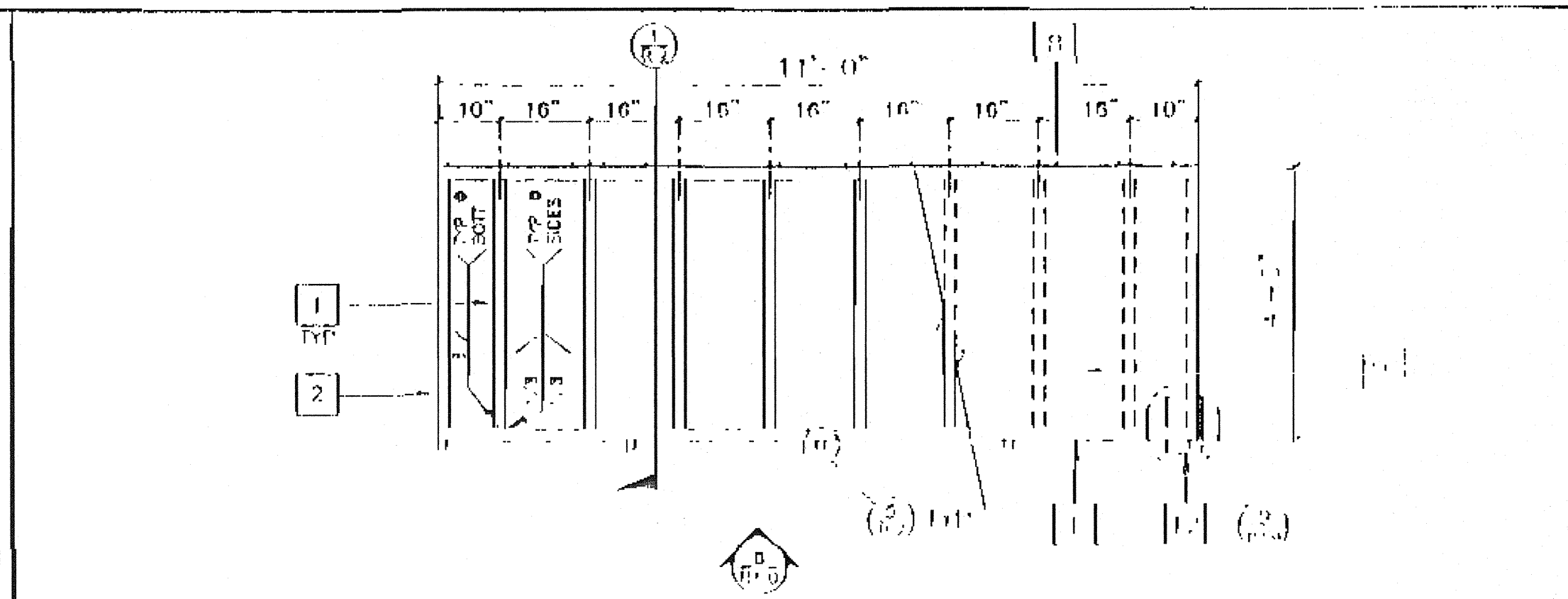
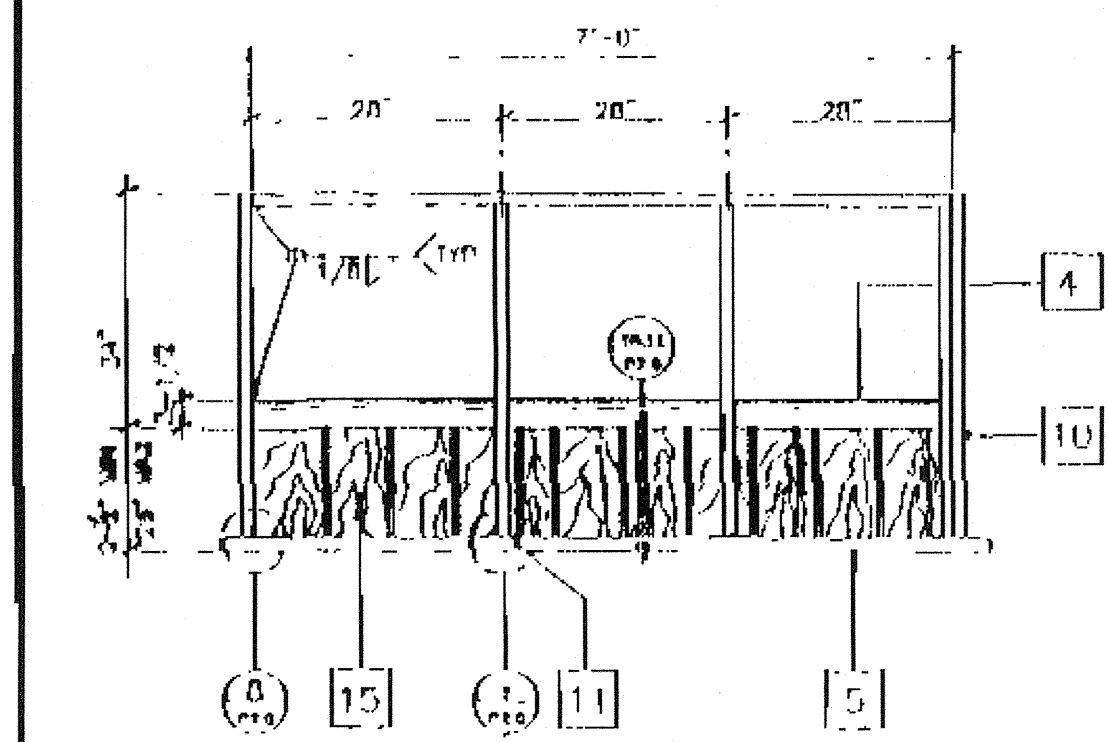


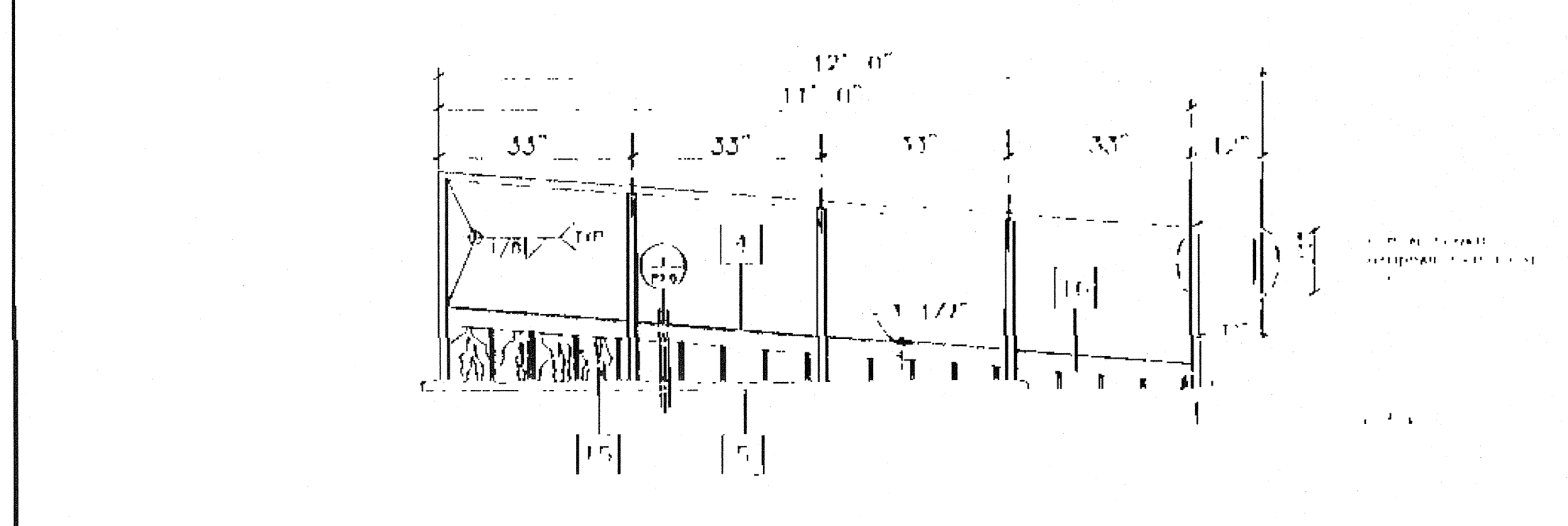
LANDING FRAME 12



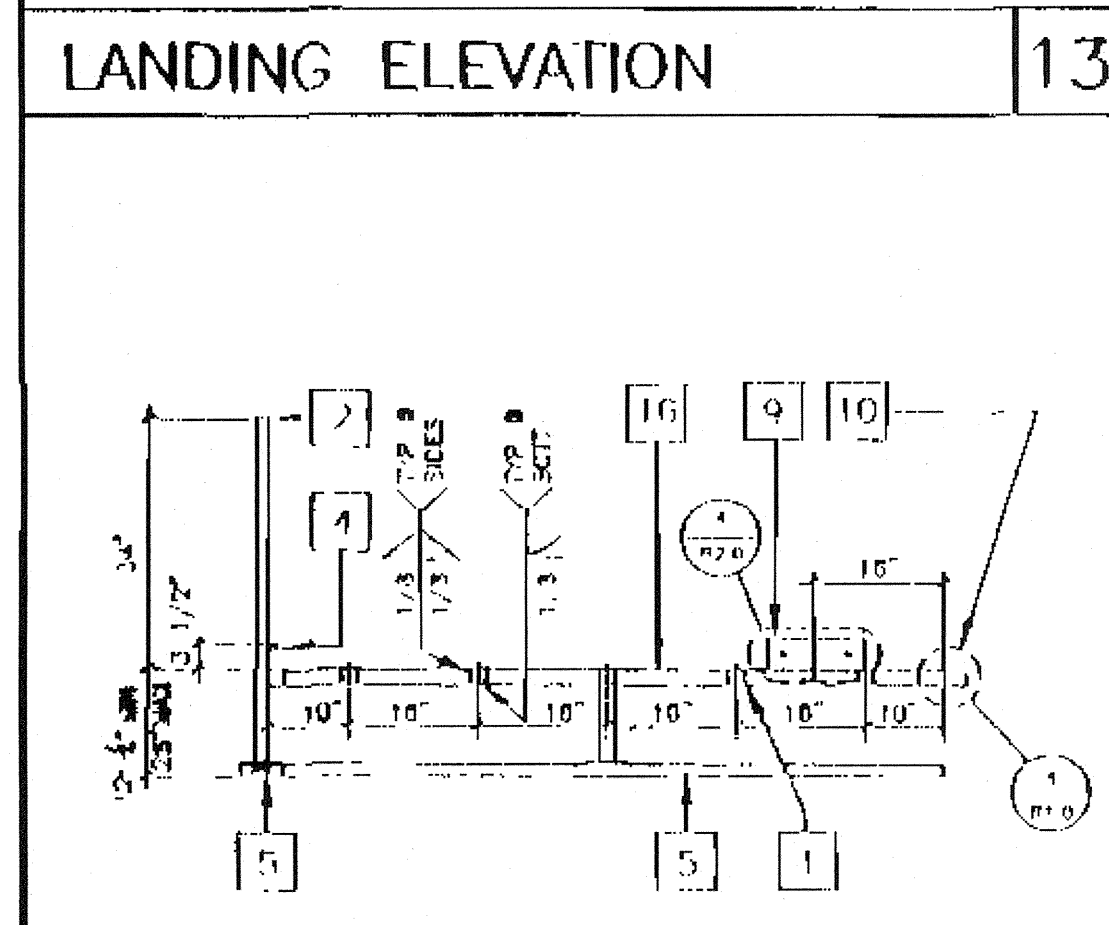
RAMP FRAME 12



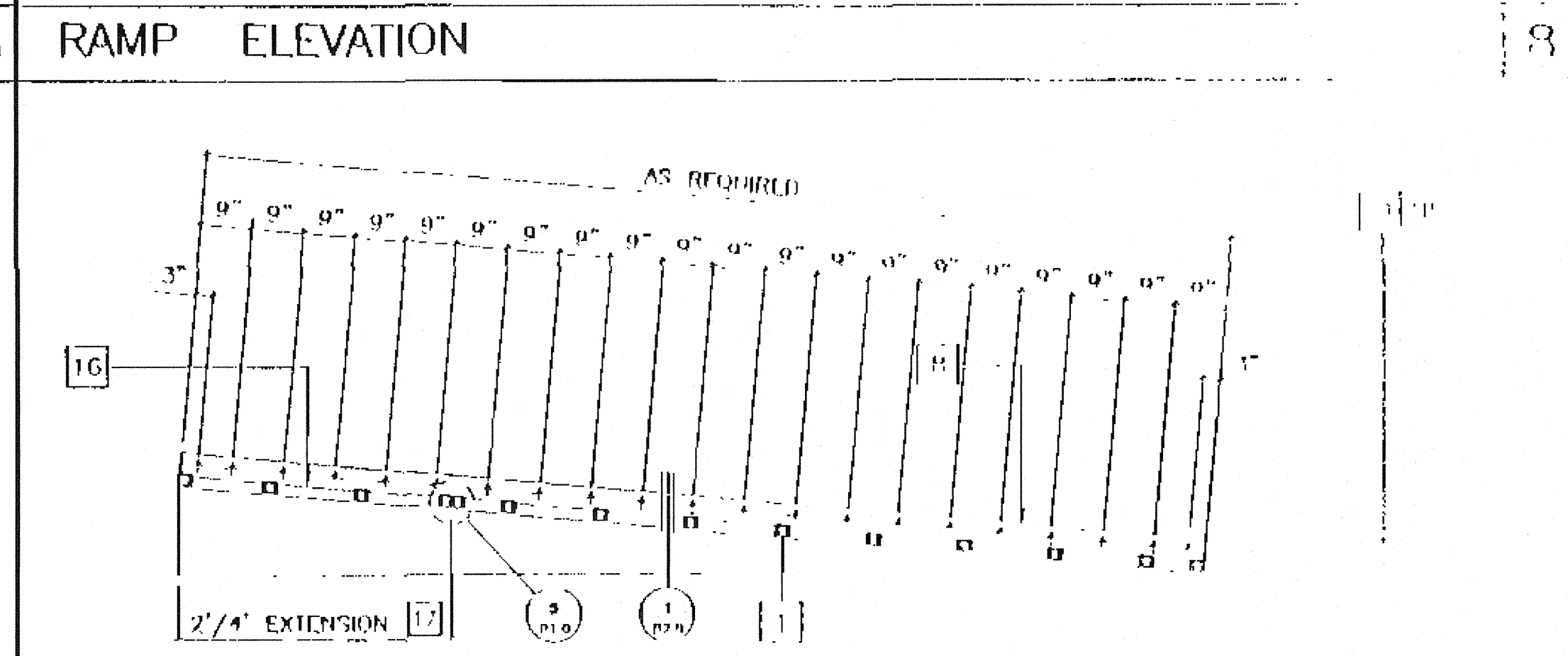
LANDING ELEVATION 13



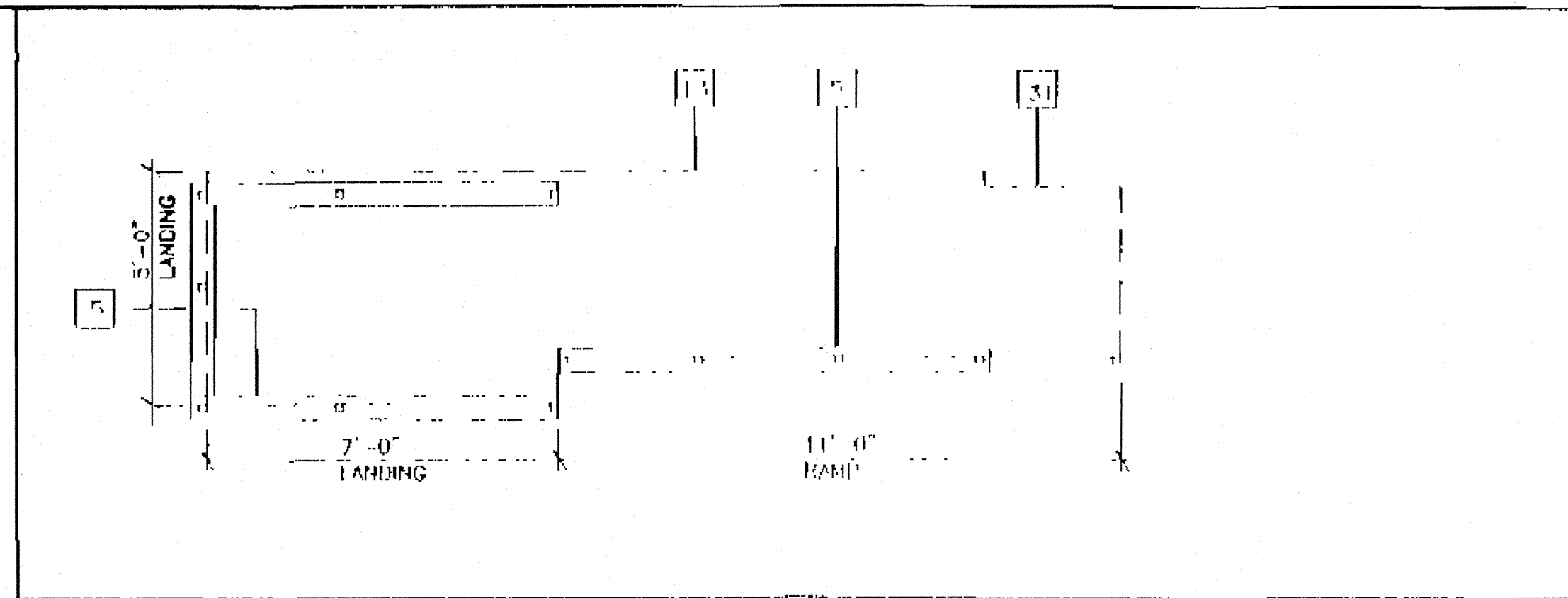
RAMP ELEVATION 13



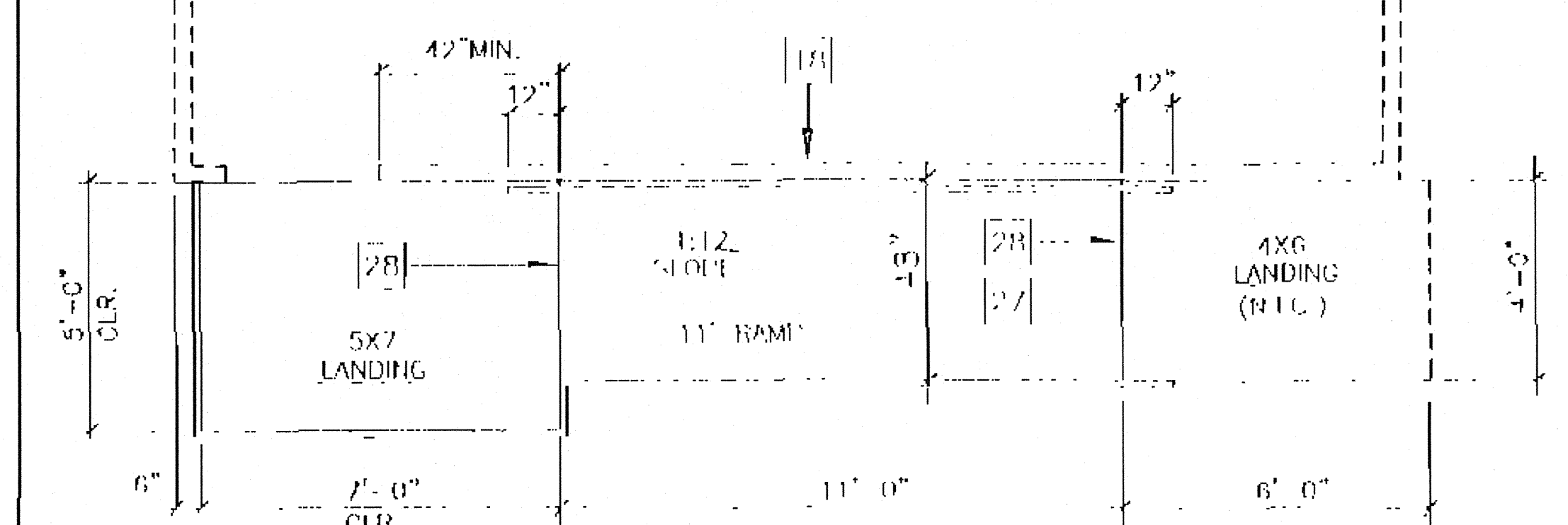
LONG. SECTION @ LANDING 14



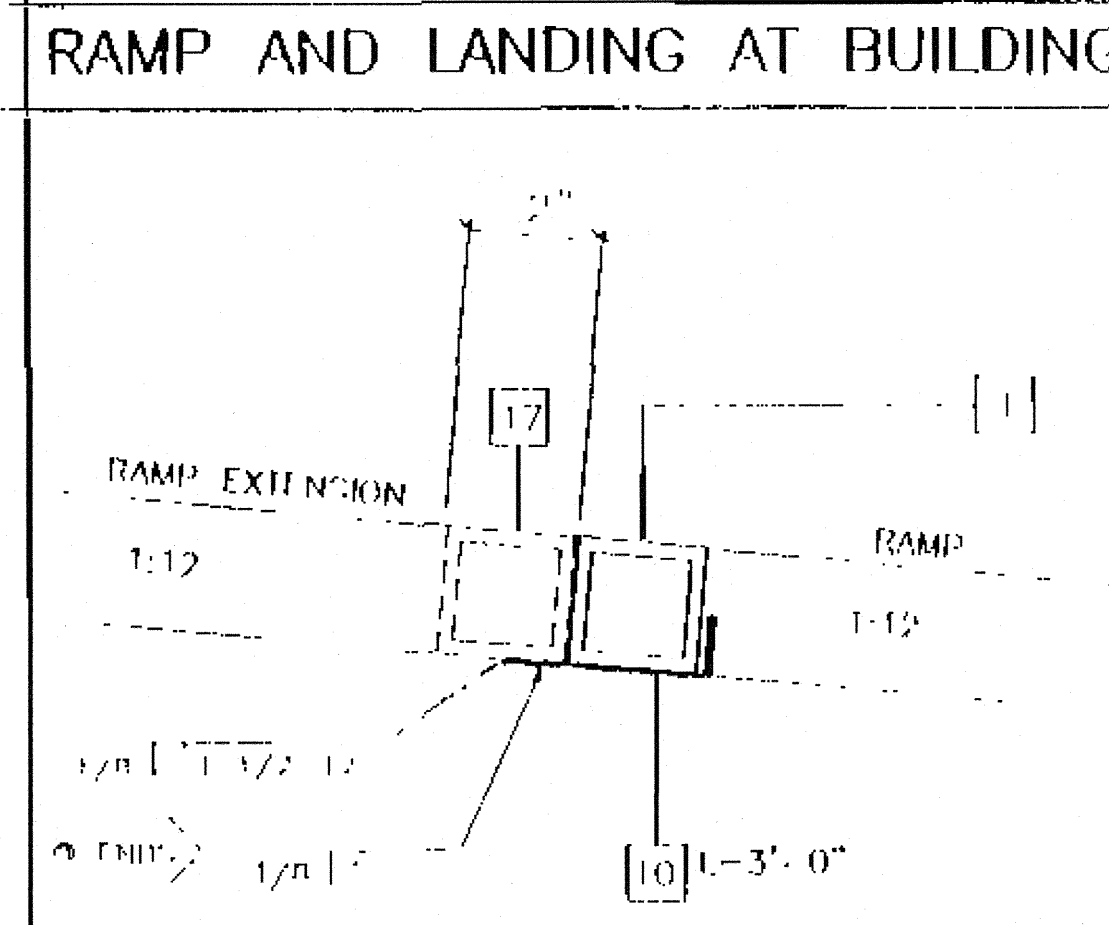
LONGITUDINAL SECTION @ RAMP 14



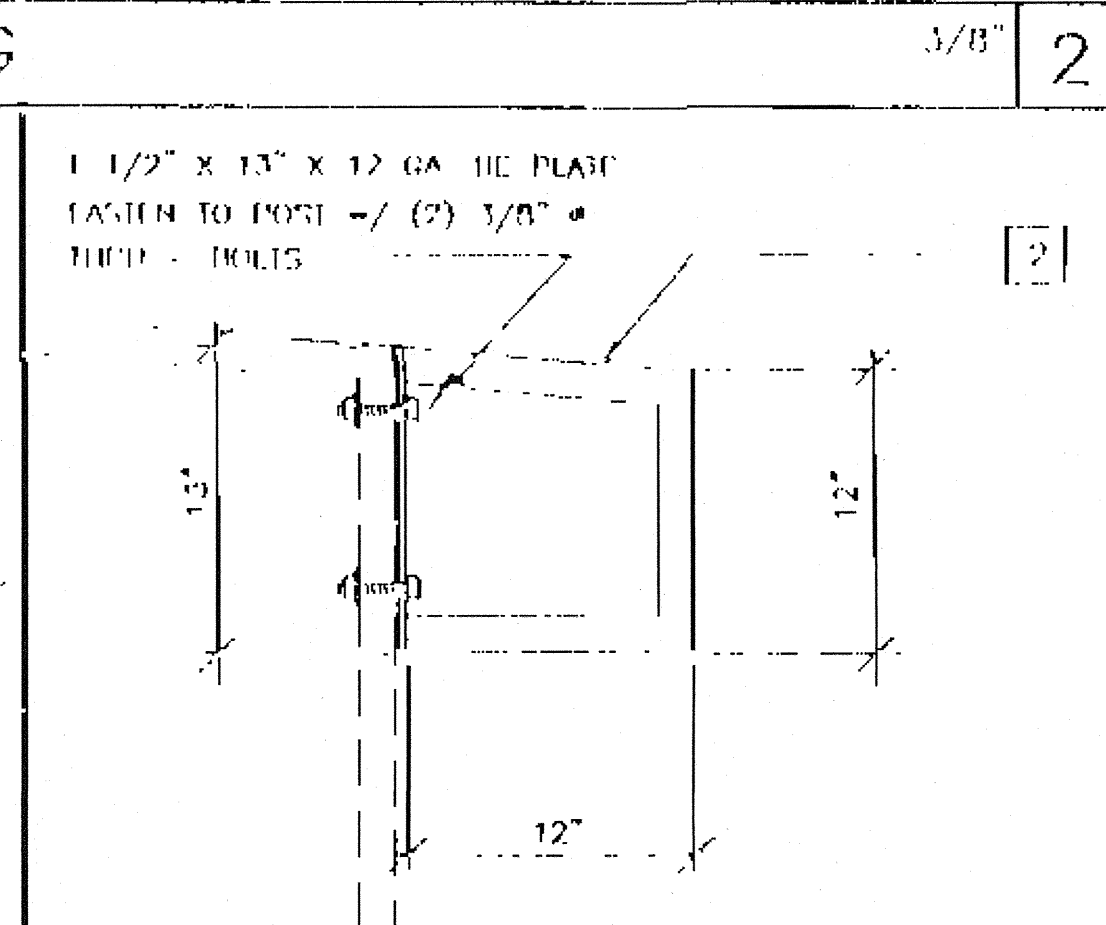
SILL PLAN FOR RAMP AND LANDING 15



RAMP AND LANDING AT BUILDING 15



RAMP EXTENSION TO RAMP 5



GUARD RAIL EXTENSION 3

- KEY NOTES**
- 1 TS 2" x 2" x 14ga
 - 2 TS 1 1/2" x 1 1/2" x 14ga (Fy = 39KSI)
 - 4 TS 1" x 1" x 16ga WHEELCHAIR GUIDE
 - 5 2 x 6 P1 SILL PLATE
 - 6 6" x 10ga CONT. PLATE W/ 1/4" x 2" TEK SCREWS @ 9" OC INTO WOOD OR FOUND. BLOCKS OR #14 x 2" TEK SCREWS INTO STEEL @ 9" OC
 - 9 6" x 12" x 10ga PLATE W/ 2-1/4" x 3" LAGS TO STRUCTURAL FRAME OF BUILDING
 - 10 3" x 1" x 3'-0" x 10ga BENT PLATE
 - 11 2" x 4" x 12ga BASE PLATE W/ 2-1/4" x 1" LAGS
 - 12 6" x 10" x 12ga BASE PLATE @ RAMP TOP
 - 13 LINE OF RAMP/LANDING ABOVE
 - 14 LOWER LANDING BY DISTRICT
 - 15 SKINNING: PLYWOOD TO MATCH BUILDING SIDING. BLOCK ALL JOINTS. ATTACH W/ 7d @ 6" OC EDGES AND 12" OC FIELD. AT EDGE CONNECTION TO T.S. USE #14 x 2" TEK SCREWS @ 6" OC
 - 16 12ga METAL DECK: NON-SLIP SURFACE. DESIGN COEFFICIENT OF FRICTION GREATER THAN 0.6. MAINTAINABLE FOR 1 YR.
 - 17 RAMP EXTENSION FRAME.
 - 18 EXISTING BUILDING.
 - 27 RAMP BY MODTECH
 - 28 FLUSH TRANSITION
 - 31 NOTCH BOTTOM PLATE (MUD SILL) AS REQUIRED TO CLEAR RAMP TOP. MAX NOTCH 1 1/2" x 4'-0" LONG.
 - 35 TS 1" x 1" x 10ga

- NOTES**
- 1 RAMP: RAMP SHALL NOT SLOPE MORE THAN 1" IN 12"
 - 2 HANDRAILS: HANDRAILS AT BOTH SIDES OF RAMP AT 34" HT.
 - 3 SURFACE: LANDING & RAMP TO HAVE NON SLIP SURFACE AMCOR GRIP II AS MANUFACTURED BY AMERICAN CHEMICAL COMPANY (OR EQUAL)
 - 4 GROUNDING: PROVIDE GROUNDING OF RAMP TO IRIG FRAME W/ #10 CU TO BOTH GROUND LUGS.
 - 5 ARCHITECT SITE / RAMP / LANDING PLANNING: DUE TO VARYING SITE CONDITIONS THE MAXIMUM HEIGHT OF FINISH FLOOR FROM GRADE IS 28" THEREFORE IT IS POSSIBLE THAT THE ACCESS RAMP ATTACHED TO THE BUILDING COULD BE 20'-0" AT A SLOPE OF 1:12 ARCHITECT MUST TAKE INTO ACCOUNT THAT THE RAMP SUPPLIED BY MODTECH INC. IS 11'-0" AT A SLOPE OF 1:12 THEREFORE THE ARCHITECT WILL HAVE TO DESIGN AND PROVIDE SUFFICIENT DETAILS OF RAMP EXTENSIONS AND BOTTOM LANDING DEPENDING ON PARTICULAR SITE CONDITIONS. IN NO WAY IS MODTECH INC. RESPONSIBLE FOR ANY RAMP EXTENSION EXCEEDING THE ORIGINAL PLAN AS SHOWN ON SHEET R-1.
 - 6 ALL 1 1/4" AND 1 1/2" TUBE SIZES TO BE OF ASTM A500 GRADE A STEEL (Fy = 39 KSI)

REVISIONS

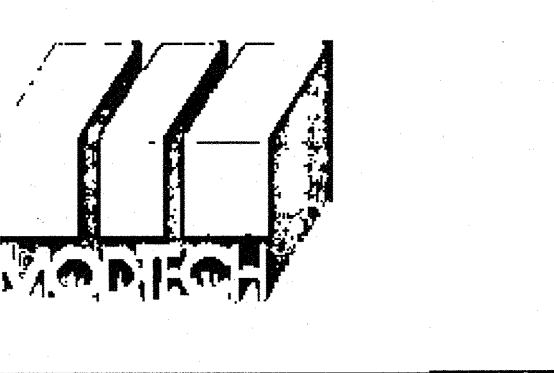
Electrical Engineer's Seal

Mechanical Engineer's Seal

Structural Engineer's Seal

Architect's Seal

PC 275
REVISED



MODTECH INC.
2030 BARRETT AVENUE
PERRIS, CALIF. 92572
PH (909) 943-4014
FAX (909) 940-0472

Job Number: PC 275
© MODTECH INC. 1997
DIV OF THE STATE ARCHITECT
APPROX 110000
AC PL SS TB
DATE 7/24/14

drawn by: LVI
date: 11/98
checked by:
project manager:
MODTECH logo no.
R1.0

RAMP / LANDING