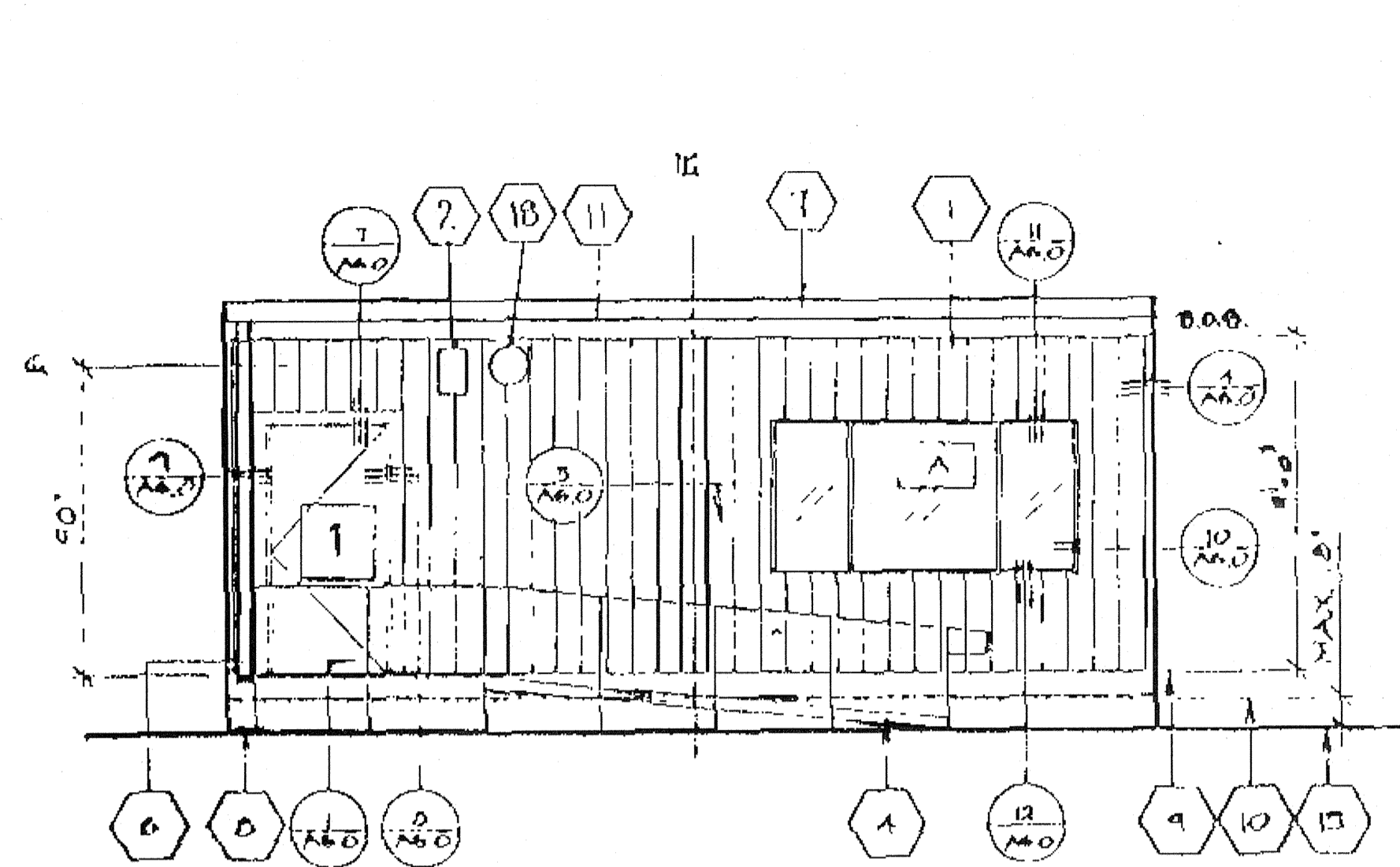


**LEGEND**

- 1 EXTERIOR DOOR (SEE DOOR SCHED)
- A EXTERIOR WINDOW (SEE FINISH SCHED)

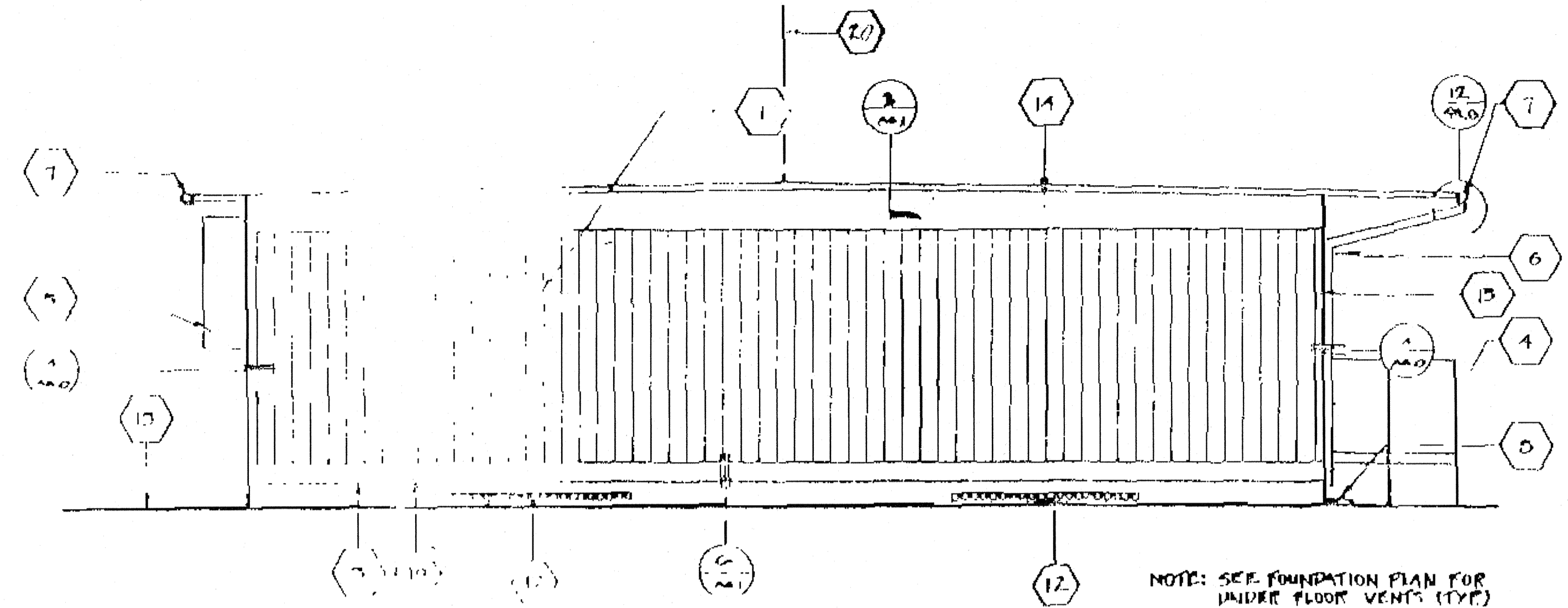
**KEY NOTES**

- 1 TYPICAL EXTERIOR SIDING (SEE FINISH SCHED)
- 2 EXTERIOR LIGHT FIXTURE (SEE SPECIFICATIONS)
- 3 TOP OF SKIRTING
- 4 RAMP AND LANDING (SEE SHT R-1.0)
- 5 HVAC UNIT (SEE SHT M-1)
- 6 DOWNSPOUT (TYP); FASTEN TO DUG-TYPE 2 PLACES (SEE (Y/A/G-1))
- 7 CONTINUOUS GUTTER WITH DOWNSPOUT (LOCATION OF DOWNSPOUT SHOWN ON ROOF PLAN A2.0)
- 8 SPLASH BLOCK (BY OTHERS)
- 9 FINISH FLOOR LINE
- 10 BOTTOM FLANGE OF FLOOR BEAM
- 11 ROOF HEADER
- 12 VENT (SEE FOUNDATION PLAN)
- 13 FINISH GRADE
- 14 ROOF BEAM (SEE STRUCTURAL)
- 15 COLUMN (SEE STRUCTURAL)
- 16 ELECTRICAL STUD-OUT 1/4" Ø (TYPICAL)
- 17 GROUND STUD-OUT 1/2" Ø (TYPICAL)
- 18 FIRE ALARM HORN NIC.
- 19 NEMA 6"X6" GUTTER DO.
- 20 FIDUCIAL



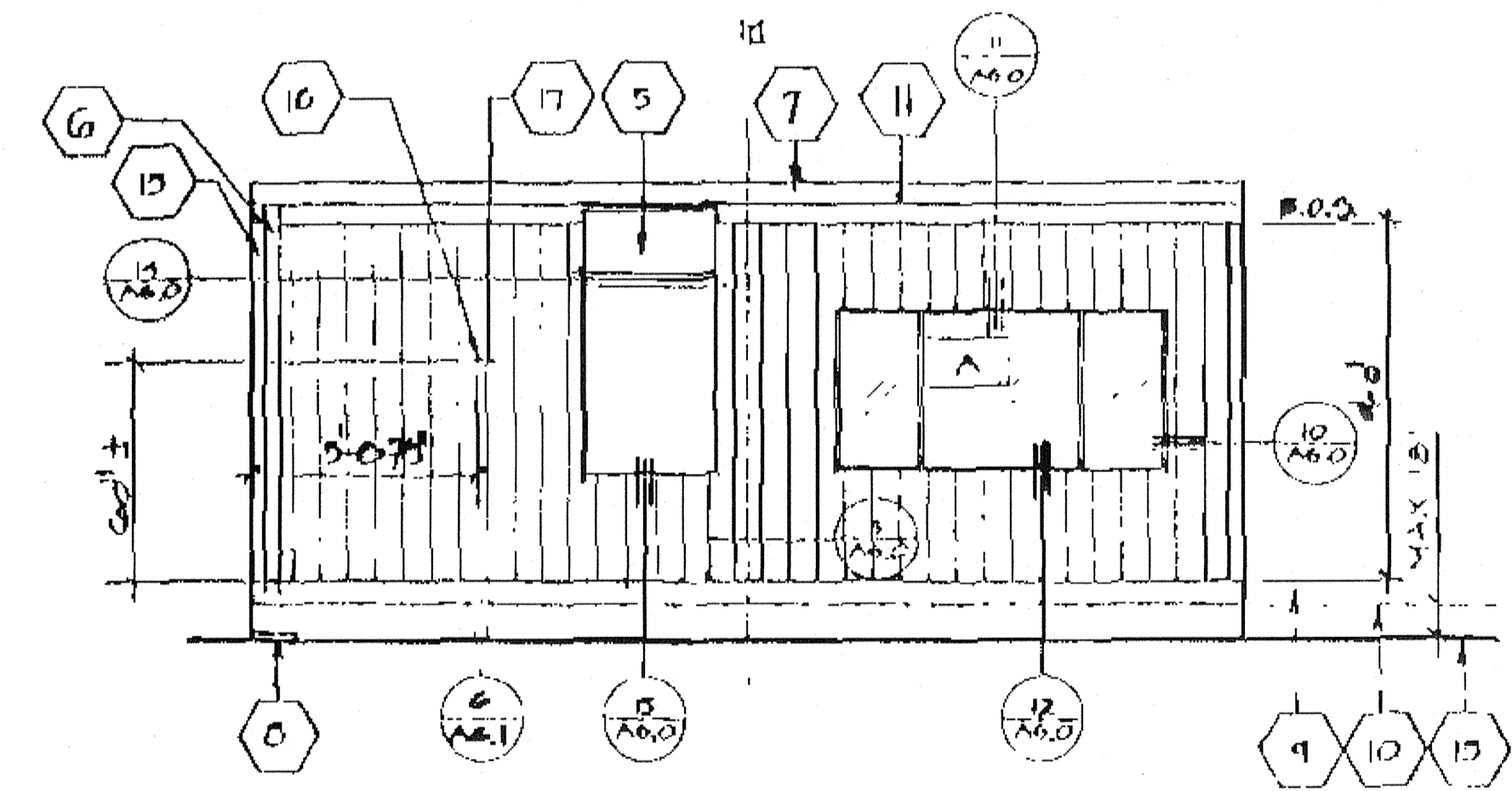
① FRONT ELEVATION

SCALE 1/4"=1'-0"



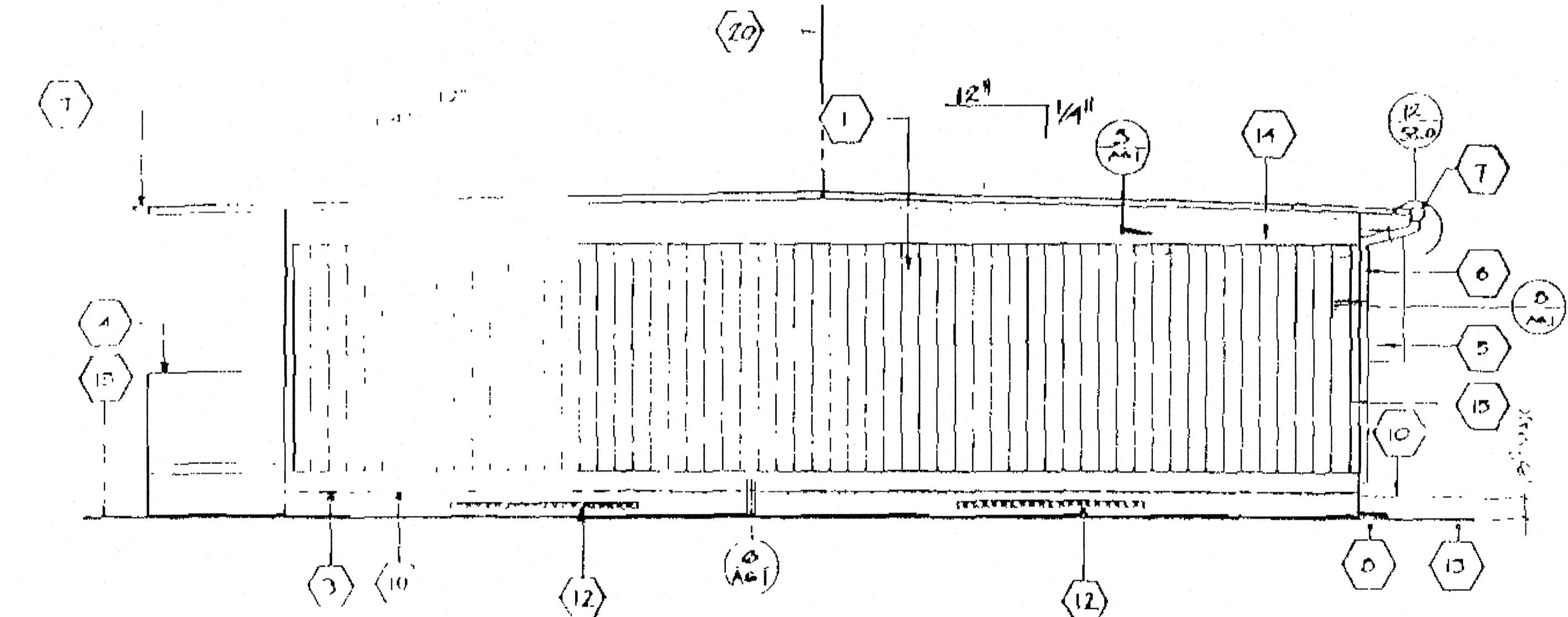
② SIDE ELEVATION

SCALE 1/4"=1'-0"



③ REAR ELEVATION

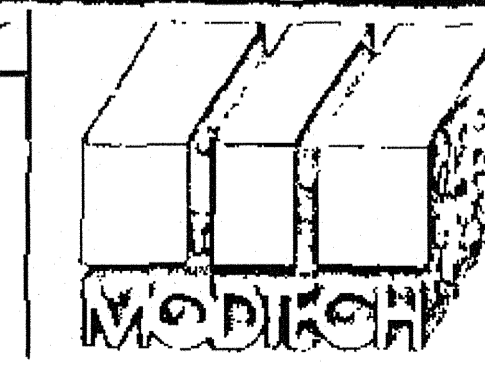
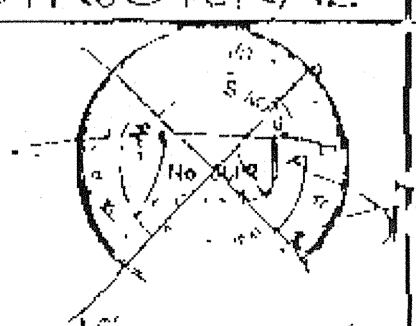
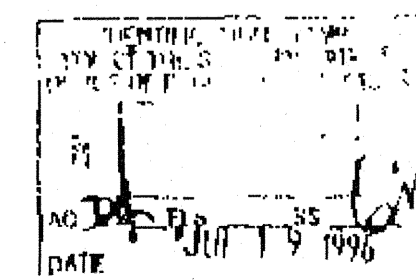
SCALE 1/4"=1'-0"



④ SIDE ELEVATION

SCALE 1/4"=1'-0"

"A" SHOWN  
"B" OPPOSITE

ARCHITECT	ELECTRICAL	STRUCTURAL	MECHANICAL	FIRE MARSHAL	ACCESS COMPLIANCE	STRUCTURAL SAFETY	
							<p>IDENTIFICATION STAMP CIVIL ENGINEER APPROX 110000 AC 11/15/96 DATE 11/15/96</p> <p>SCALE: 1/4"=1'-0"</p> <p>24'X40' DUAL PITCH A3-0A</p>