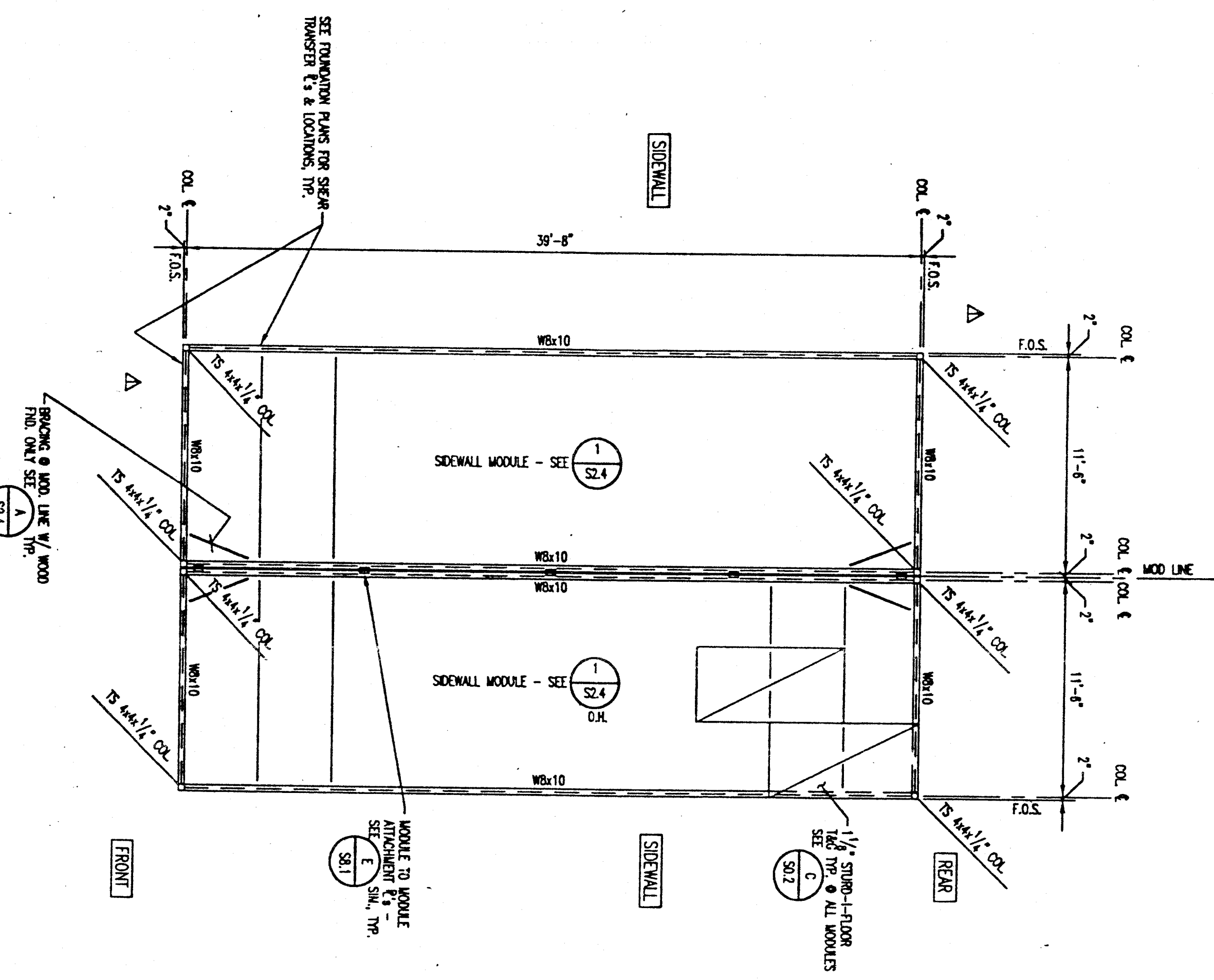
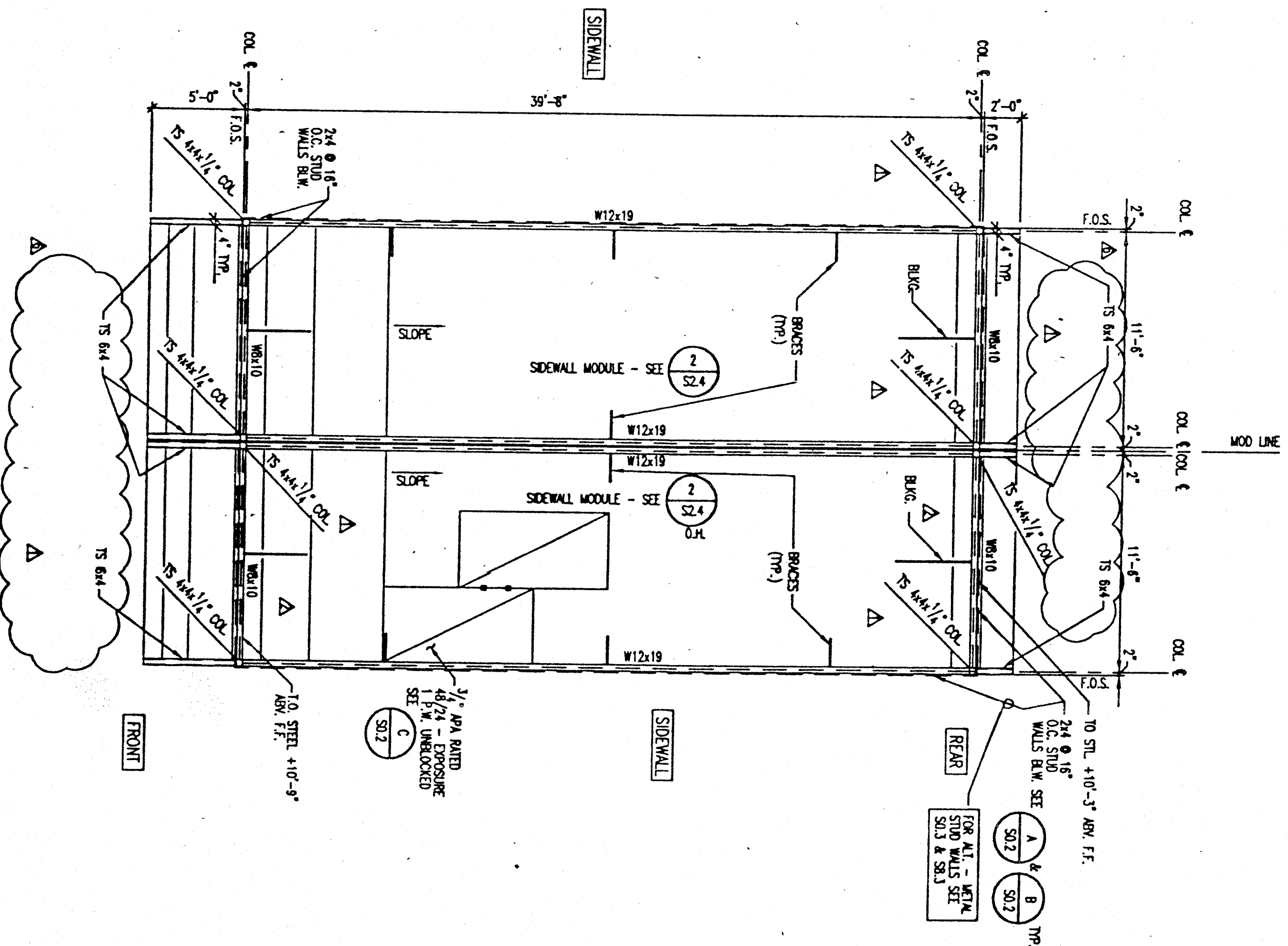


1 24x40' BUILDING FLOOR PLAN
SCALE 3/8"=1'-0"



2 24x40' BUILDING ROOF PLAN
SCALE 3/8"=1'-0"



THESE DRAWINGS AND/OR SPECIFICATIONS AND/OR CALCULATIONS FOR THE ITEMS LISTED ARE THE PROPERTY OF ANDERSON & DOIG STRUCTURAL ENGINEERS. ANY REPRODUCTION OR TRANSMISSION OF THESE DRAWINGS OR CALCULATIONS WITHOUT THE WRITTEN PERMISSION OF ANDERSON & DOIG STRUCTURAL ENGINEERS IS STRICTLY PROHIBITED. THE USER OF THESE DRAWINGS OR CALCULATIONS SHALL BE RESPONSIBLE FOR OBTAINING ALL NECESSARY PERMITS AND APPROVALS FROM THE APPROPRIATE AGENCIES. ANDERSON & DOIG STRUCTURAL ENGINEERS, A CALIFORNIA CORPORATION, 15225 PLACER LANE, STE. 100, SACRAMENTO, CA 95833. PHONE (916) 486-9999. FAX (916) 486-9998. DATE: OCT 18 1995

APPROVED: *[Signature]*
DATE: 10-14-97

REGISTERED PROFESSIONAL ENGINEER
CIVIL
NO. 4774
STATE OF CALIFORNIA

APPROVED: *[Signature]*
DATE: 10-14-97

REGISTERED PROFESSIONAL ENGINEER
CIVIL
NO. 103897
STATE OF CALIFORNIA

APPROVED: *[Signature]*
DATE: 10-14-97

REGISTERED PROFESSIONAL ENGINEER
CIVIL
NO. 21380
STATE OF CALIFORNIA

REVISIONS	BY
5-22-97	BD
6-30-97	BD
7-29-97/NO CHANGE	BD
8-27-97/NO CHANGE	BD
8-31-97 - SEE AT SHS	BD
10-14-97	BD

DRAWN	BY
CHECKED	BY
DATE	BY
SCALE	AS NOTED
JOB NO.	97007_PSPC1
SHEET	52.3

ANDERSON & DOIG STRUCTURAL ENGINEERS
A CALIFORNIA CORPORATION
15225 PLACER LANE, STE. 100, SACRAMENTO, CA 95833
PHONE (916) 486-9999 FAX (916) 486-9998

REGISTERED PROFESSIONAL ENGINEER
CIVIL
NO. 4774
STATE OF CALIFORNIA

REGISTERED PROFESSIONAL ENGINEER
CIVIL
NO. 103897
STATE OF CALIFORNIA

REGISTERED PROFESSIONAL ENGINEER
CIVIL
NO. 21380
STATE OF CALIFORNIA

PACESETTER INDUSTRIES, INC.
P.O. BOX 1131, MODESTO, CA 95353 (209) 521-1600

24x40 RELOCATABLE BUILDING

FLOOR AND ROOF PLANS

REVISIONS	BY
5-22-97	BD
6-30-97	BD
7-29-97/NO CHANGE	BD
8-27-97/NO CHANGE	BD
8-31-97 - SEE AT SHS	BD
10-14-97	BD