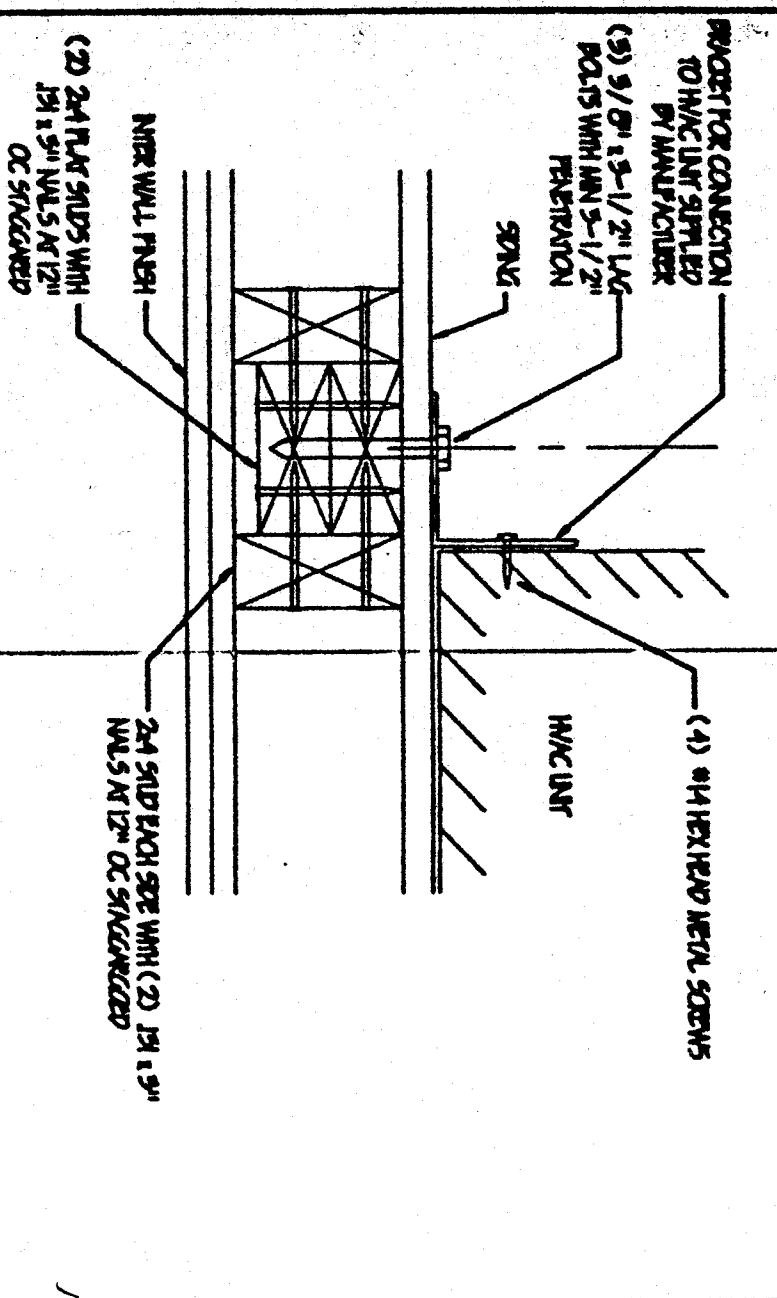
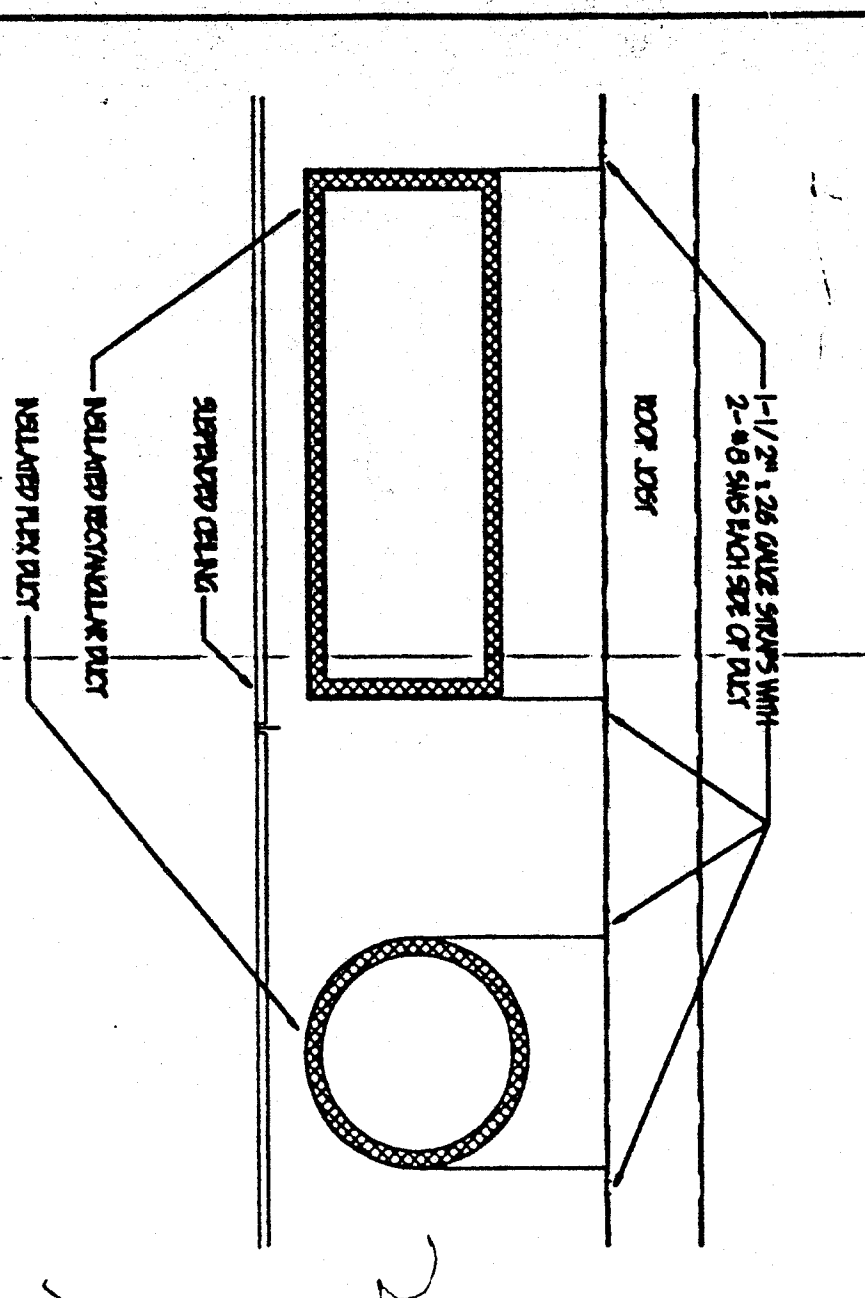


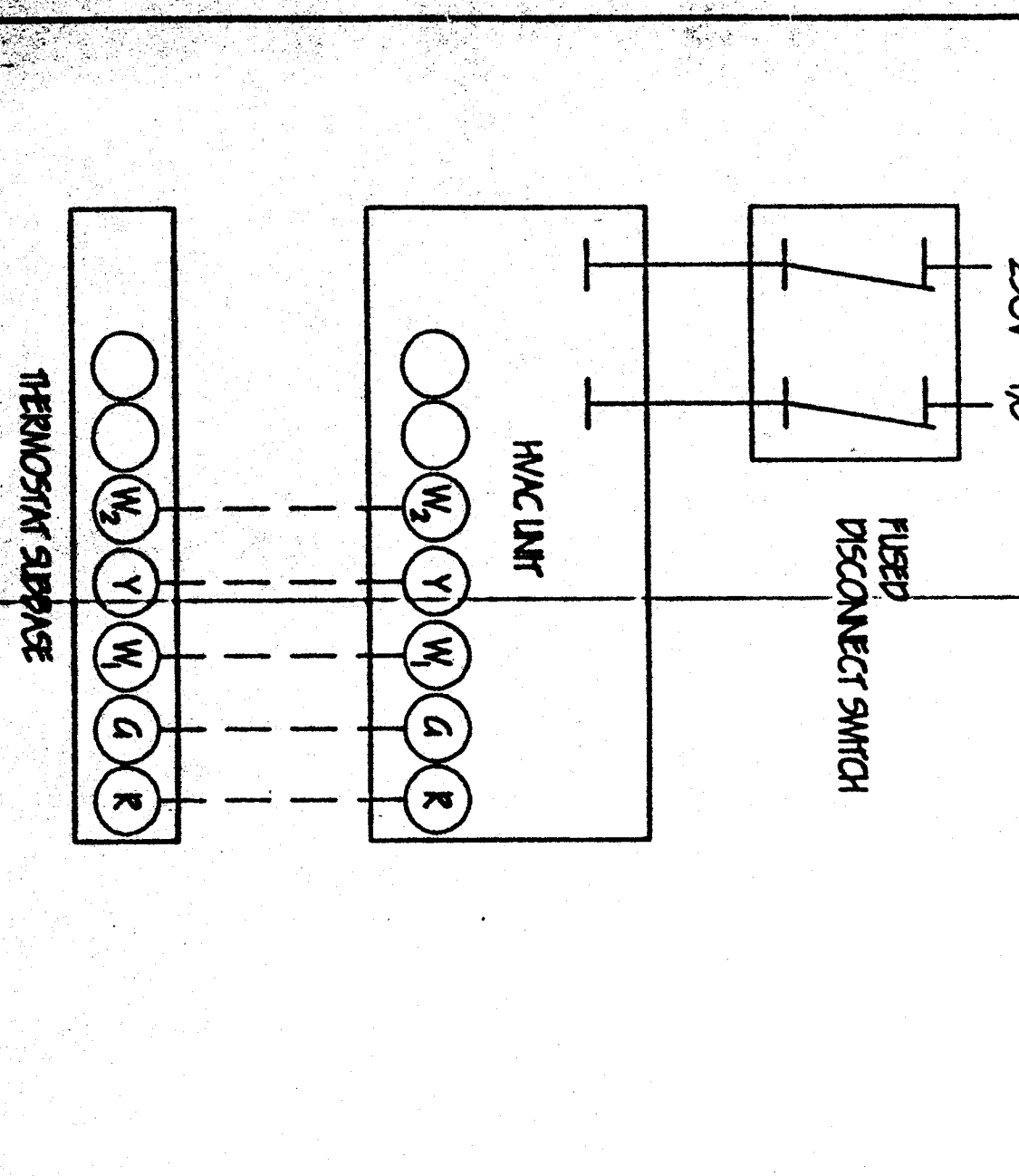
4 ALT. PLENUM DETAILS SCALE: 1/4" = 1'-0"



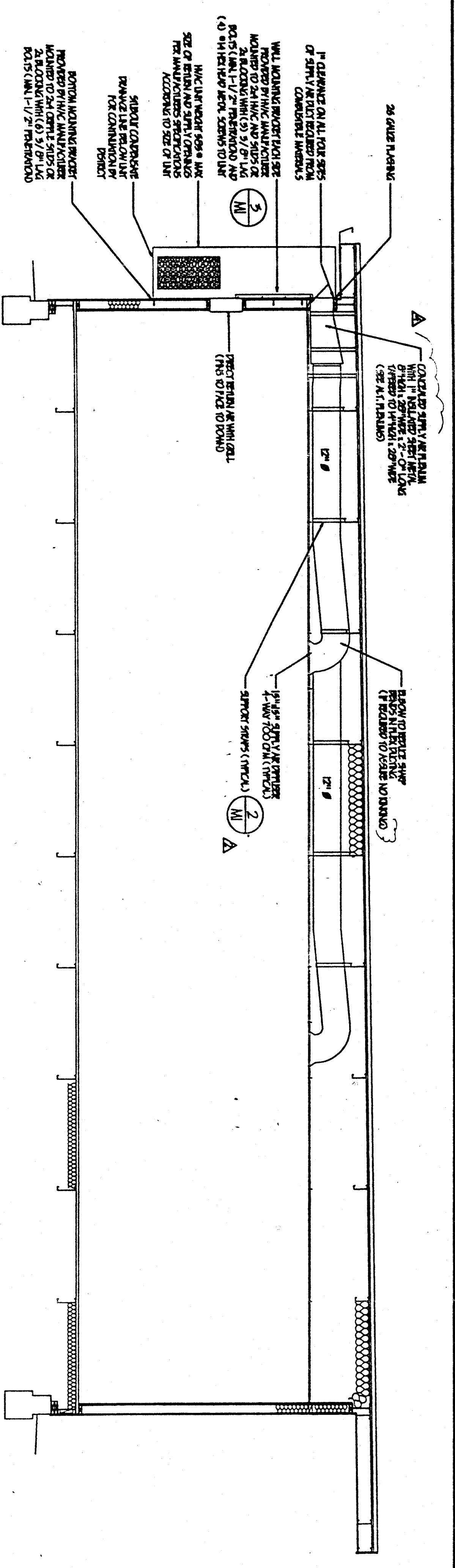
5 ALT. WALL FRAMING AT HVAC SCALE: 1/4" = 1'-0"



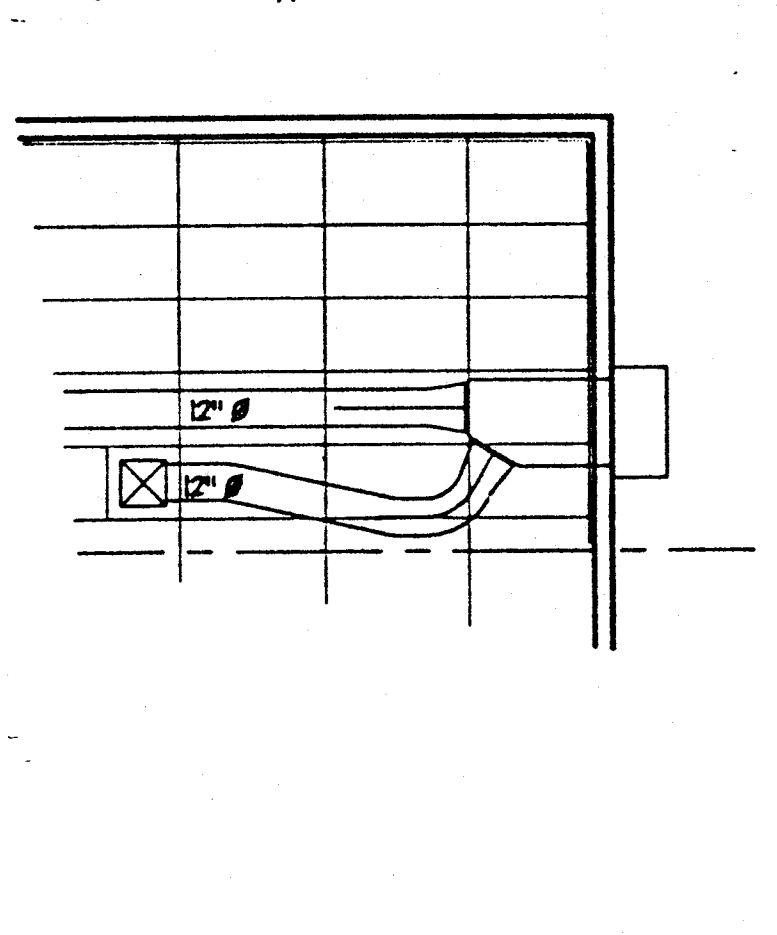
2 DUCT MOUNTING SCALE: 1/4" = 1'-0"



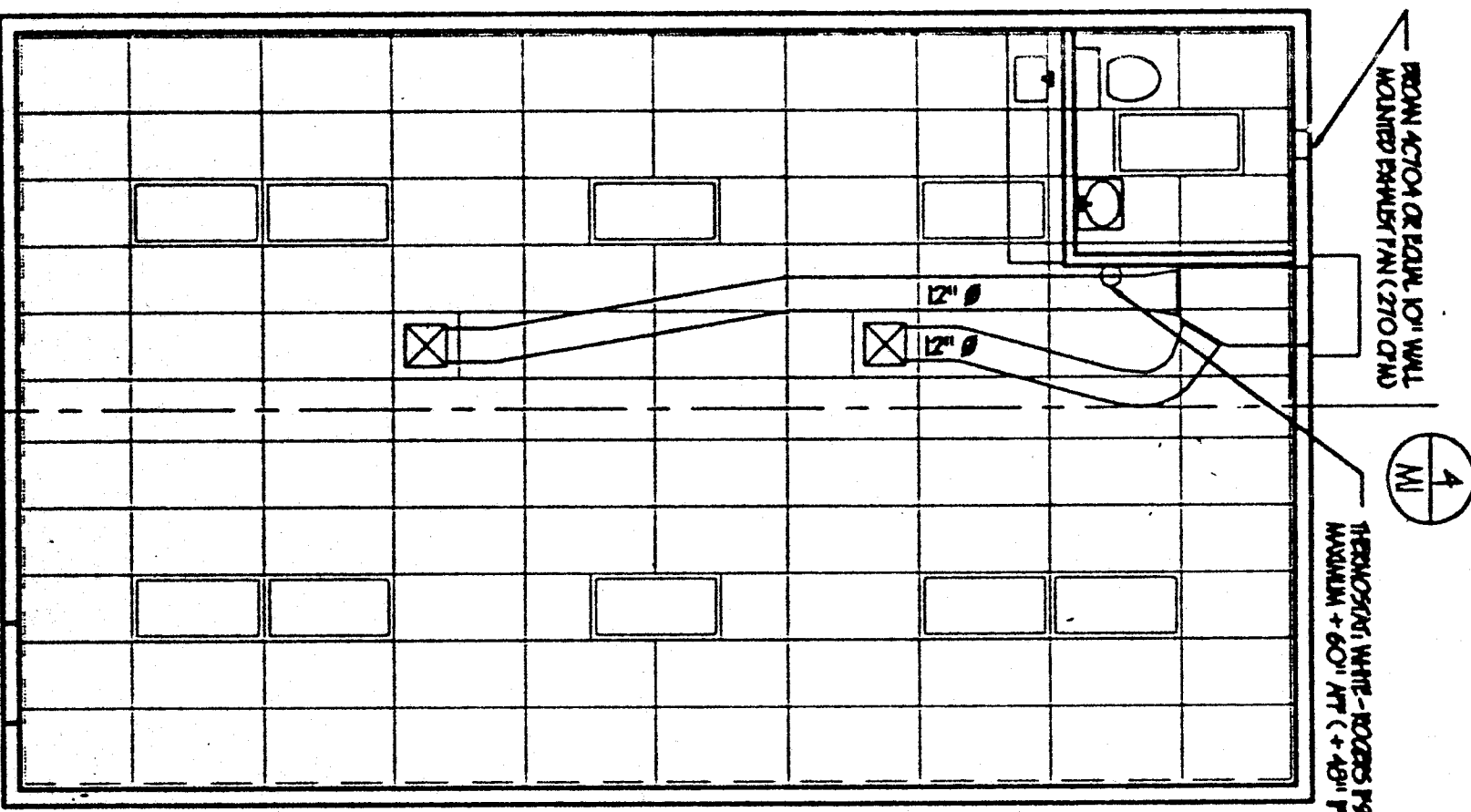
1 CONTROL SCHEMATIC SCALE: 1/4" = 1'-0"



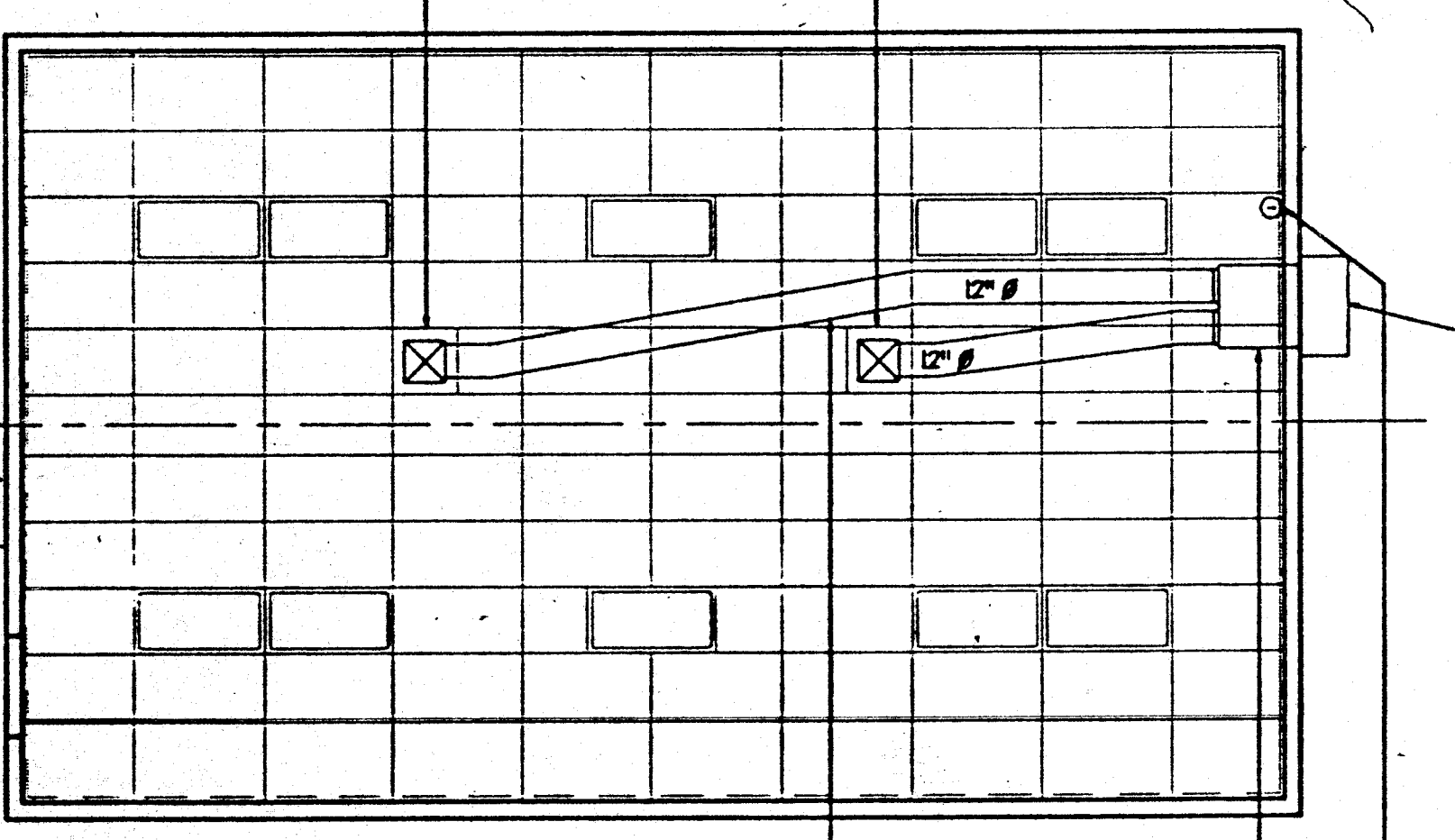
HEAT/SUPPLY AIR DUCT CROSS SECTION SCALE: 1/4" = 1'-0"



ALT. PLENUM PLANS SCALE: 1/4" = 1'-0"



24'x40' ALT. MECHANICAL (HVAC) PLAN SCALE: 1/4" = 1'-0"



24'x40' MECHANICAL (HVAC) PLAN SCALE: 1/4" = 1'-0"

THESE DRAWINGS AND ALL SPECIFICATIONS AND CONDITIONS FOR THE ITEMS LISTED ARE THE PROPERTY OF PACESSETTER INDUSTRIES, INC. AND ARE TO BE USED ONLY FOR THE PROJECT AND SITE SPECIFICALLY IDENTIFIED HEREIN. ANY REUSE OR MODIFICATION OF THESE DRAWINGS WITHOUT THE WRITTEN PERMISSION OF PACESSETTER INDUSTRIES, INC. IS STRICTLY PROHIBITED. THE USER OF THESE DRAWINGS SHALL BE RESPONSIBLE FOR OBTAINING ALL NECESSARY PERMITS AND APPROVALS FROM THE APPROPRIATE AGENCIES. PACESSETTER INDUSTRIES, INC. SHALL NOT BE RESPONSIBLE FOR ANY DAMAGE, LOSS, OR INJURY RESULTING FROM THE USE OF THESE DRAWINGS. DATE: OCT 18 1998

GENERAL NOTES

- 1. REFER TO ARCHITECTURAL DRAWINGS FOR ALL OTHER NOTES AND SPECIFICATIONS.
- 2. ALL WORK SHALL BE DONE IN ACCORDANCE WITH THE LATEST EDITIONS OF THE NATIONAL MECHANICAL ELECTRICAL PLUMBING (NEMEP) CODES AND STANDARDS.
- 3. ALL MATERIALS SHALL BE APPROVED BY THE ARCHITECT AND THE ENGINEER.
- 4. ALL WORK SHALL BE COMPLETED WITHIN THE SPECIFIED TIME FRAME.
- 5. THE CONTRACTOR SHALL BE RESPONSIBLE FOR OBTAINING ALL NECESSARY PERMITS AND APPROVALS FROM THE APPROPRIATE AGENCIES.

LEGEND

1/4" DIA. HOLE	1/4" DIA. HOLE
1/2" DIA. HOLE	1/2" DIA. HOLE
3/4" DIA. HOLE	3/4" DIA. HOLE
1" DIA. HOLE	1" DIA. HOLE
2" DIA. HOLE	2" DIA. HOLE
3" DIA. HOLE	3" DIA. HOLE
4" DIA. HOLE	4" DIA. HOLE
6" DIA. HOLE	6" DIA. HOLE
8" DIA. HOLE	8" DIA. HOLE
10" DIA. HOLE	10" DIA. HOLE
12" DIA. HOLE	12" DIA. HOLE
14" DIA. HOLE	14" DIA. HOLE
16" DIA. HOLE	16" DIA. HOLE
18" DIA. HOLE	18" DIA. HOLE
20" DIA. HOLE	20" DIA. HOLE

APPROVALS

DATE: 10/18/98
 DRAWN BY: J. S. NO.
 CHECKED BY: J. S. NO.
 APPROVED BY: J. S. NO.

PC 330
 PACESSETTER INDUSTRIES, INC.
 11111 PACESSETTER BLVD.
 SACRAMENTO, CA 95834
 (916) 332-2455
 FAX (916) 332-2455

GRAFCIS ARCHITECTURAL SERVICES
GEIGER
 NORMAN A. GEIGER
 AIA, CSI, CDT, ICB
 P.O. BOX 41064
 Sacramento, CA 95841
 (916) 332-2455 FAX
 (916) 332-2455 PHONE

PACESSETTER INDUSTRIES, INC.
 P.O. BOX 1151, MODESTO, CA 95335 (209) 521-1600
24x40 RELOCATABLE BUILDING

M1
 REVISIONS:
 NO. DATE BY DESCRIPTION
 01 07/22/97 J.S.N. REVISED PER ARCHITECT
 02 08/12/97 J.S.N. REVISED PER ARCHITECT
 03 08/12/97 J.S.N. REVISED PER ARCHITECT
 04 08/12/97 J.S.N. REVISED PER ARCHITECT