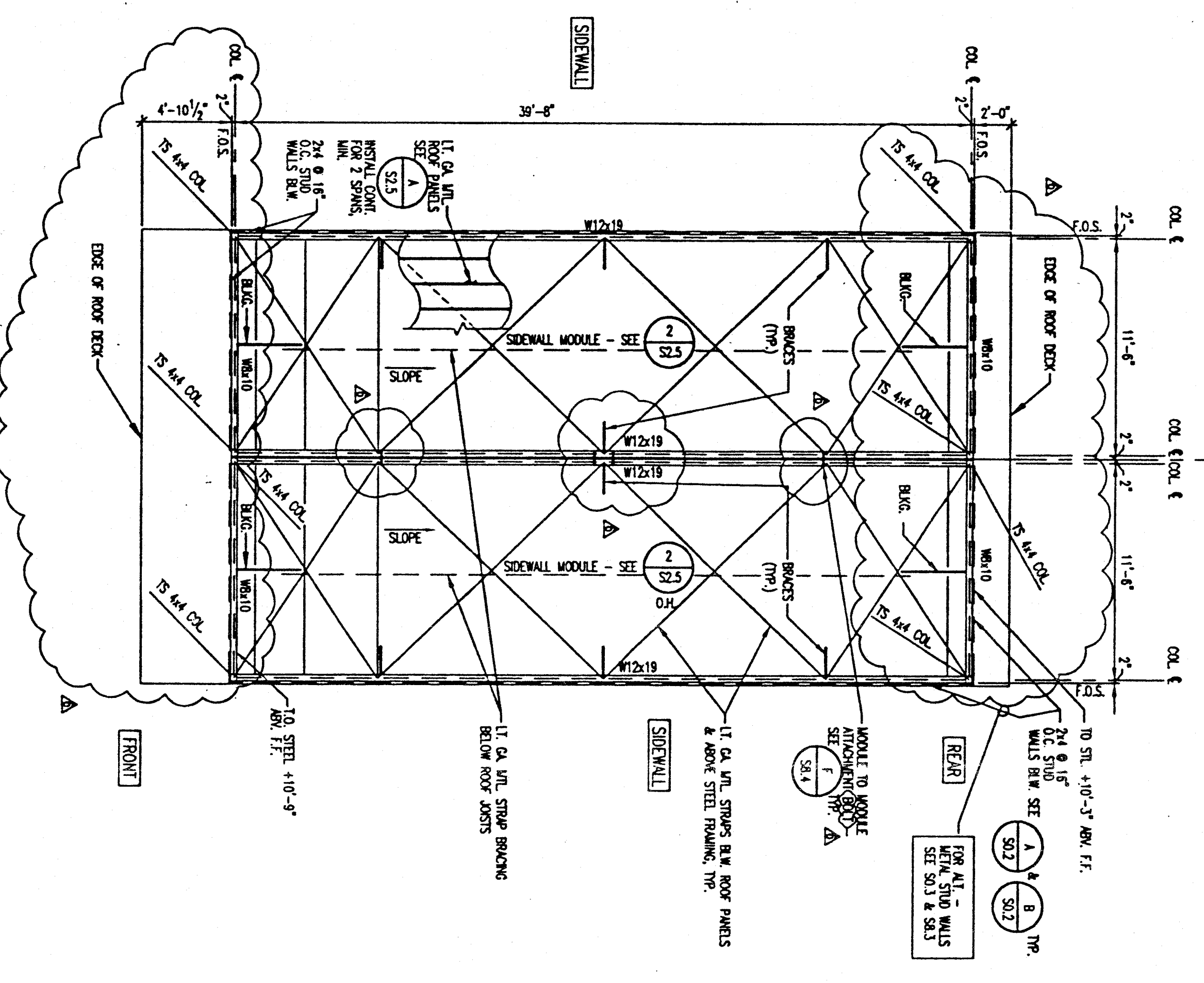
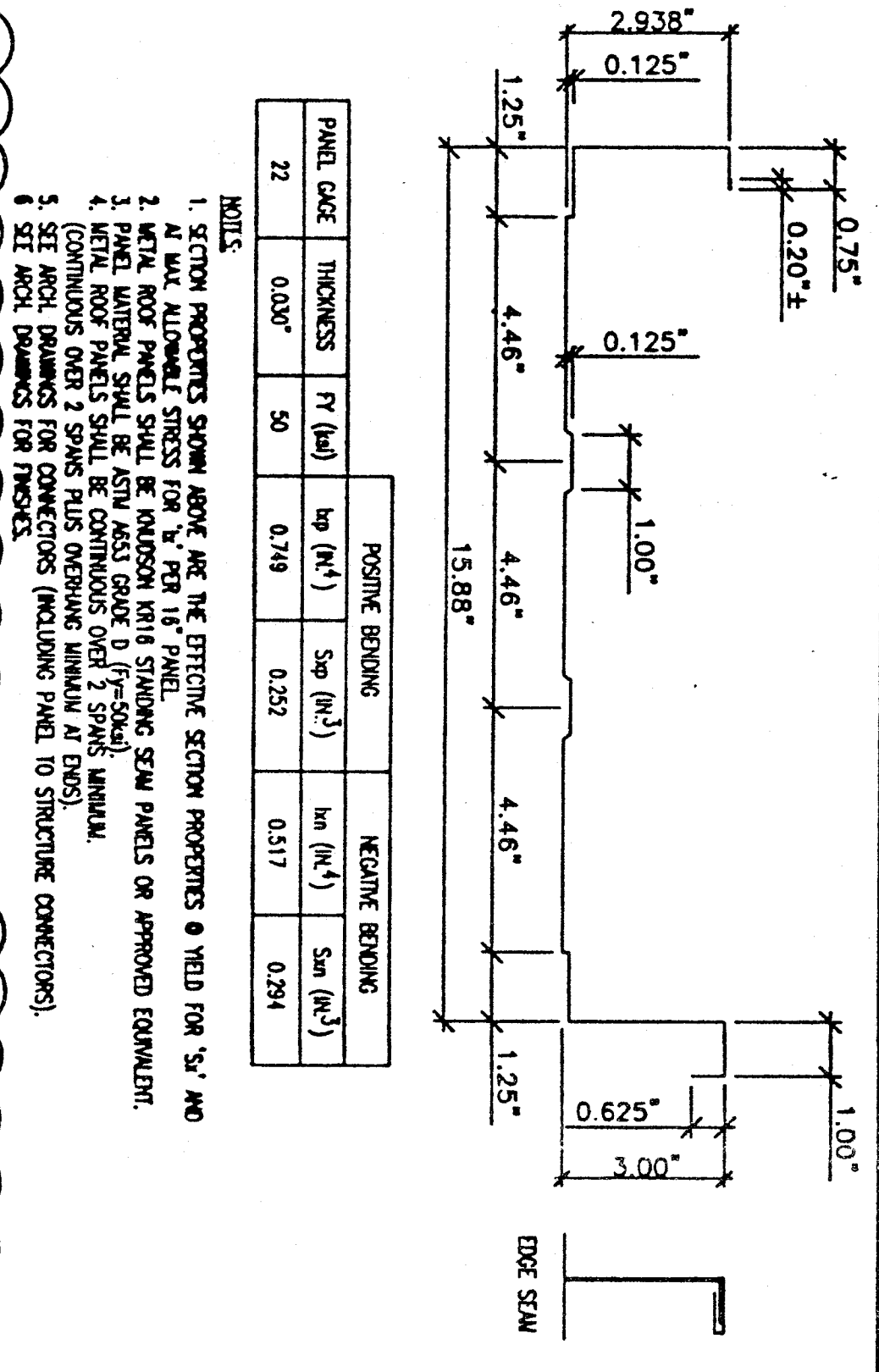


1 24x40 BUILDING ROOF PLAN FOR METAL ROOF PANELS ALTERNATE
SCALE: 1/8"=1'-0"

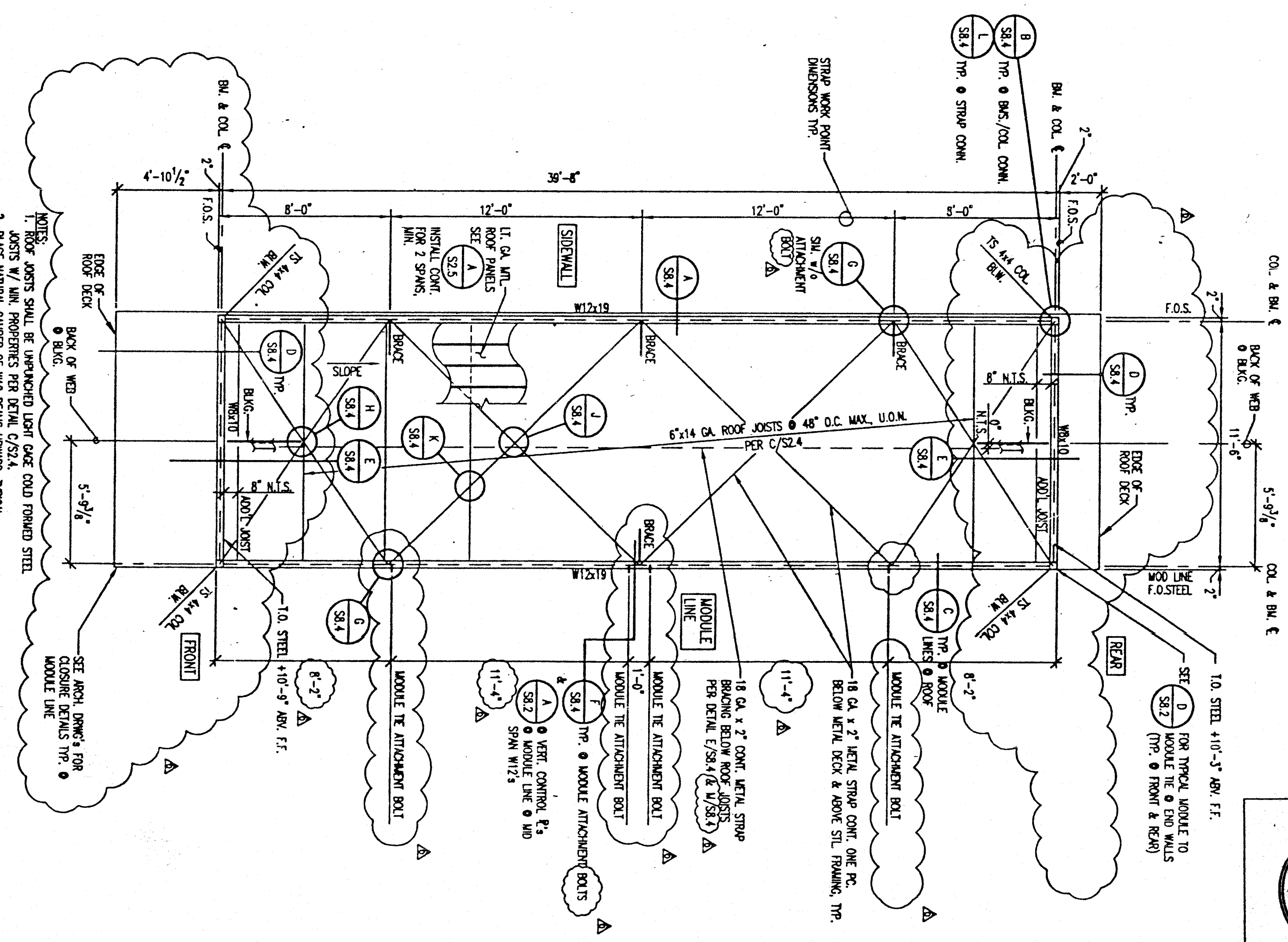


A METAL ROOF PANEL MINIMUM SECTION PROPERTIES
SCALE: N.T.S.



- SECTION PROPERTIES SHOWN ABOVE ARE THE MINIMUM SECTION PROPERTIES & YIELD FOR 30" AND 36" PANELS.
- ALL METAL PANELS SHALL BE CONFORMANT WITH THE FOLLOWING REQUIREMENTS:
 - MINIMUM ALLOWABLE STRESS FOR σ_y PER 16" PANEL.
 - MINIMUM ALLOWABLE STRESS FOR σ_x PER 16" PANEL.
 - MINIMUM ALLOWABLE STRESS FOR σ_z PER 16" PANEL.
 - MINIMUM ALLOWABLE STRESS FOR σ_{xy} PER 16" PANEL.
 - MINIMUM ALLOWABLE STRESS FOR σ_{xz} PER 16" PANEL.
 - MINIMUM ALLOWABLE STRESS FOR σ_{yz} PER 16" PANEL.
 - MINIMUM ALLOWABLE STRESS FOR σ_{xy} PER 16" PANEL.
 - MINIMUM ALLOWABLE STRESS FOR σ_{xz} PER 16" PANEL.
 - MINIMUM ALLOWABLE STRESS FOR σ_{yz} PER 16" PANEL.
- COMMENTS: CHECK STRESS RATIO REQUIREMENTS MINIMUM AT DESIGN.
- MINIMUM ALLOWABLE STRESS FOR σ_y PER 16" PANEL.
- MINIMUM ALLOWABLE STRESS FOR σ_x PER 16" PANEL.
- MINIMUM ALLOWABLE STRESS FOR σ_z PER 16" PANEL.
- MINIMUM ALLOWABLE STRESS FOR σ_{xy} PER 16" PANEL.
- MINIMUM ALLOWABLE STRESS FOR σ_{xz} PER 16" PANEL.
- MINIMUM ALLOWABLE STRESS FOR σ_{yz} PER 16" PANEL.
- SEE ARCH. DRAWINGS FOR FINISHES.

2 TYP. ROOF PLAN FOR METAL ROOF PANELS ALTERNATE - SIDEWALL MODULE
SCALE: 1/8"=1'-0"



THESE DRAWINGS AND / OR SPECIFICATIONS AND / OR CALCULATIONS FOR THE ITEMS LISTED BELOW HAVE BEEN PREPARED BY OTHER PERSONS WHOSE QUALIFICATIONS AND LICENSES ARE NOT KNOWN TO THE ENGINEER. THE ENGINEER HAS REVIEWED THE DRAWINGS AND CALCULATIONS AND HAS FOUND THEM TO BE IN ACCORDANCE WITH THE REQUIREMENTS OF THE CALIFORNIA ENGINEERING ACT AND THE PROFESSIONAL ENGINEERING COUNCIL OF CALIFORNIA. THE ENGINEER HAS NOT CONDUCTED AN INVESTIGATION OF THE QUALIFICATIONS OF THE OTHER PERSONS WHOSE DRAWINGS AND CALCULATIONS ARE REFERENCED IN THESE DRAWINGS. THE ENGINEER HAS NOT CONDUCTED AN INVESTIGATION OF THE QUALIFICATIONS OF THE OTHER PERSONS WHOSE DRAWINGS AND CALCULATIONS ARE REFERENCED IN THESE DRAWINGS. THE ENGINEER HAS NOT CONDUCTED AN INVESTIGATION OF THE QUALIFICATIONS OF THE OTHER PERSONS WHOSE DRAWINGS AND CALCULATIONS ARE REFERENCED IN THESE DRAWINGS.

REGISTERED PROFESSIONAL ENGINEER
C-6330
LARRY R. BAKER
LISCORE

DATE: OCT 18 1999

NOTE: SEE S0.3 & S8.3 TYP. FOR METAL STUD WALL ALTERNATE

REVISIONS

NO.	DATE	DESCRIPTION
1	10-14-97	AS NOTED
2	97007_PSPC1	SHEET

PC-330

DATE: 10-14-97

SCALE: AS NOTED

97007_PSPC1

SHEET

ANDERSON & DOIG
STRUCTURAL ENGINEERS
& CALIFORNIA CORPORATION
10008 PLACER LANE, STE 100, SACRAMENTO, CA 95827-2371
(916) 946-9946 FAX 916-946-9622

REGISTERED PROFESSIONAL ENGINEER
C-6330
LARRY R. BAKER
LISCORE

DATE: OCT 18 1999

PACESETTER INDUSTRIES, INC.
P.O. BOX 1131, MODESTO, CA 95353 (209) 521-1600

24x40 RELOCATABLE BUILDING

ROOF PLANS FOR METAL ROOF PANELS ALTERNATE

NO.	DATE	DESCRIPTION
1	10-14-97	AS NOTED
2	97007_PSPC1	SHEET