

CORNELIUS CONSULTING GROUP, INC.
 Consulting Electrical Engineers
 1100 L Street, Suite 100
 Visalia, California 93222-6705

INVESTIGATION REPORT
 DIVISION OF THE STATE ARCHITECT
 OFFICE OF REGULATION SERVICES
 APR. 105-102817
 DATE: 10-16-11
 PROJECT: 105-102817

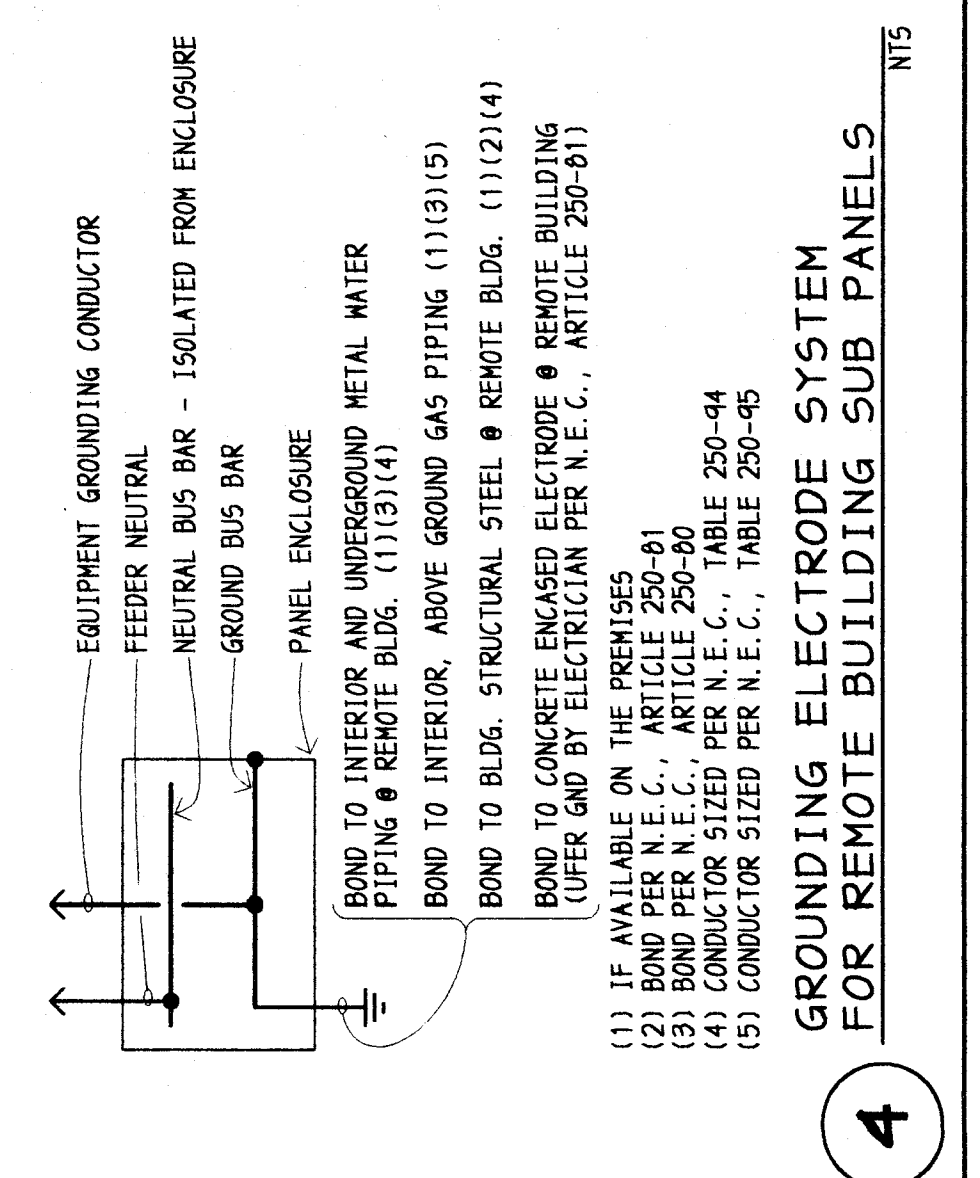
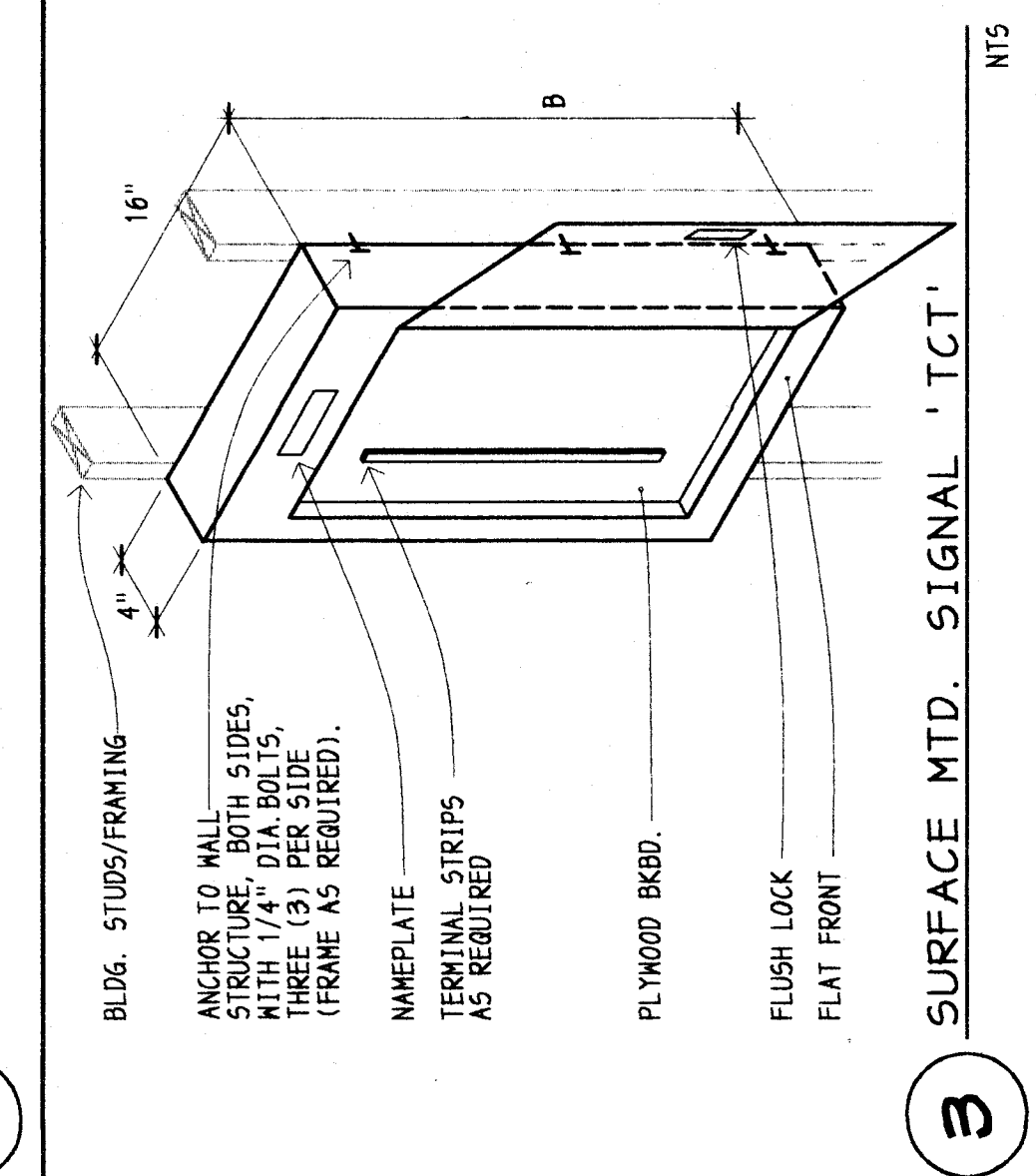
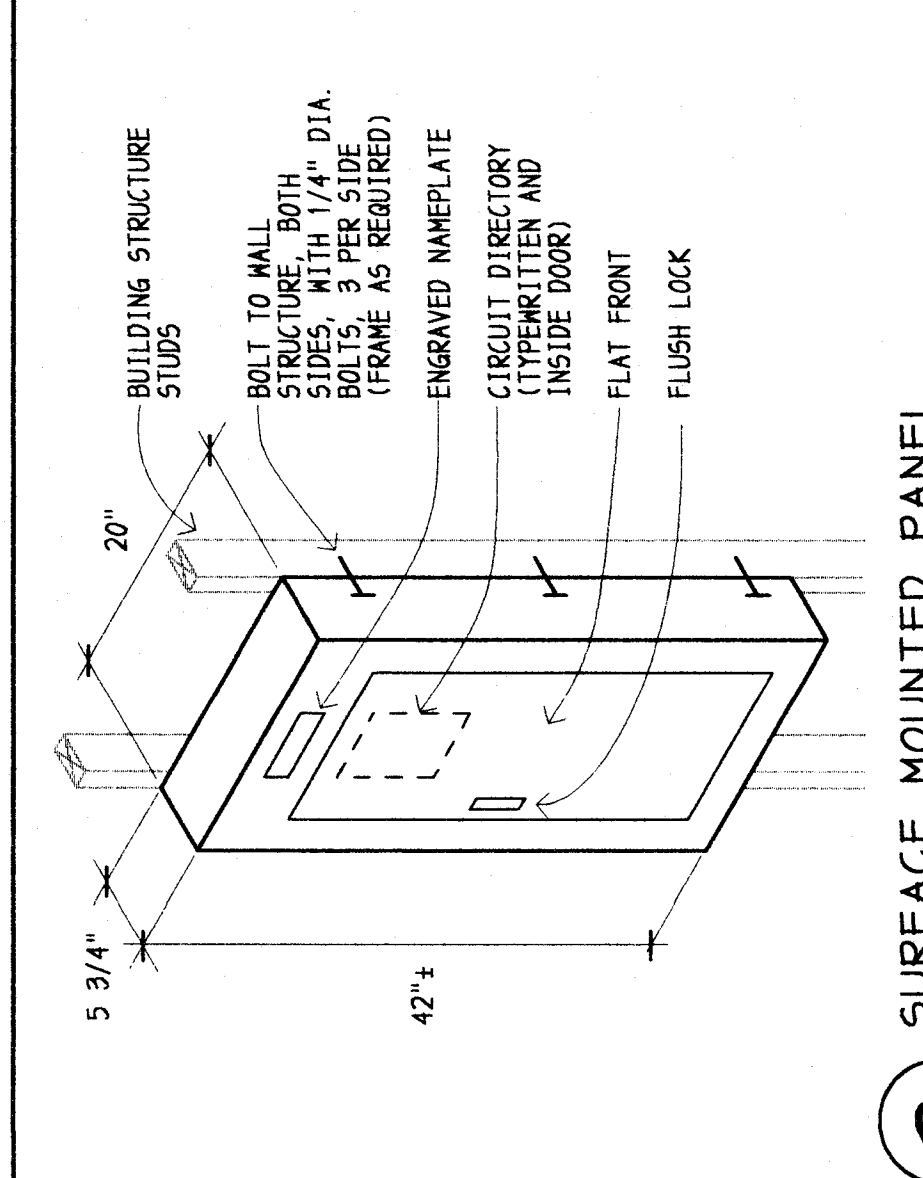
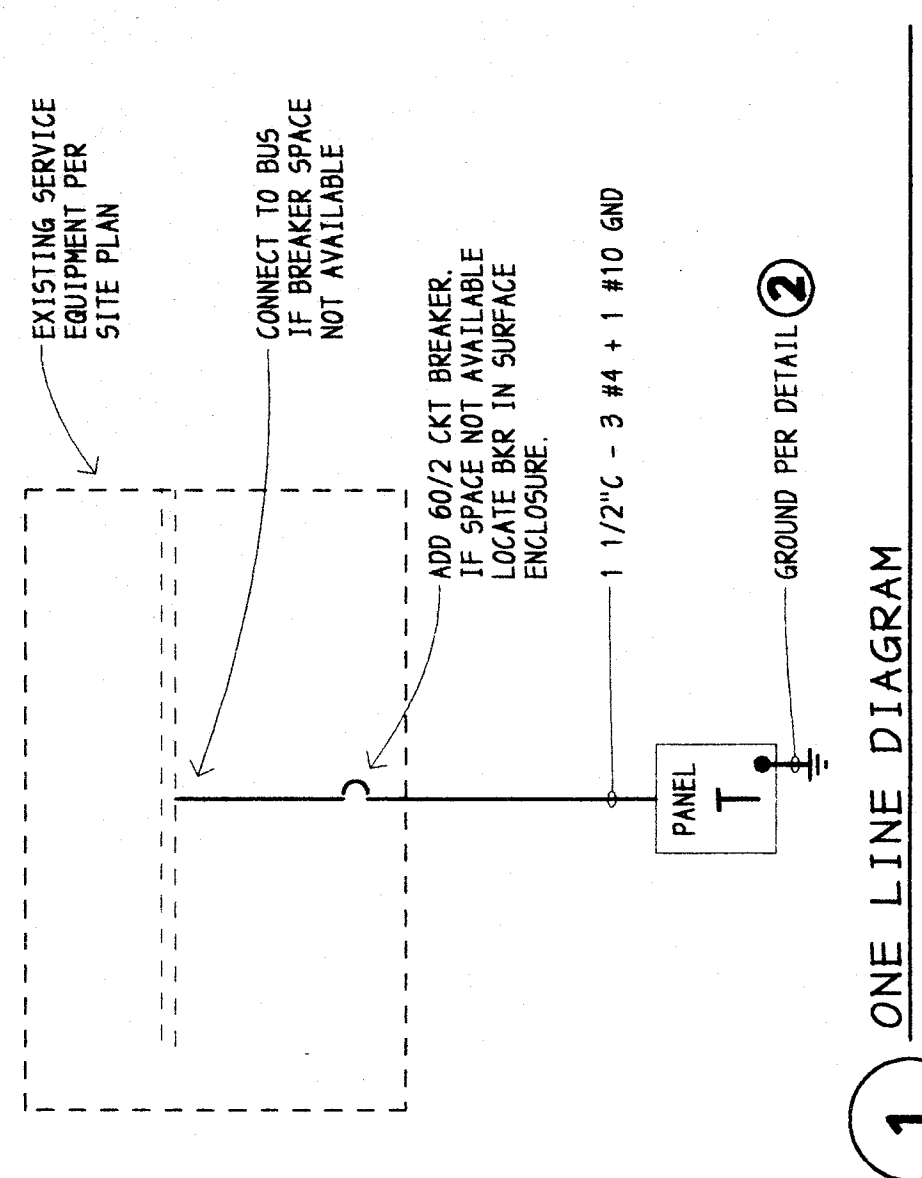
**RESTROOM BUILDINGS
 AND RELOCATABLE CLASSROOMS
 FOR FREMONT AND MT. VERNON ELEMENTARY SCHOOLS**
 BAKERSFIELD CITY SCHOOL DISTRICT
 BAKERSFIELD, KERN COUNTY, CALIFORNIA

**LIGHTING PLAN
 POWER & SIGNAL
 PLAN DETAILS
 & SCHEDULES**

REVISIONS
 NO. DATE DESCRIPTION
 1 01-12-2000

NO.	DATE	REVISIONS
1	01-12-2000	

PROJECT NO. 4
 SHEETS 6



ELECTRICAL SYMBOLS
 ALL DIMENSIONS TO CENTER OF BOX, U.O.N.

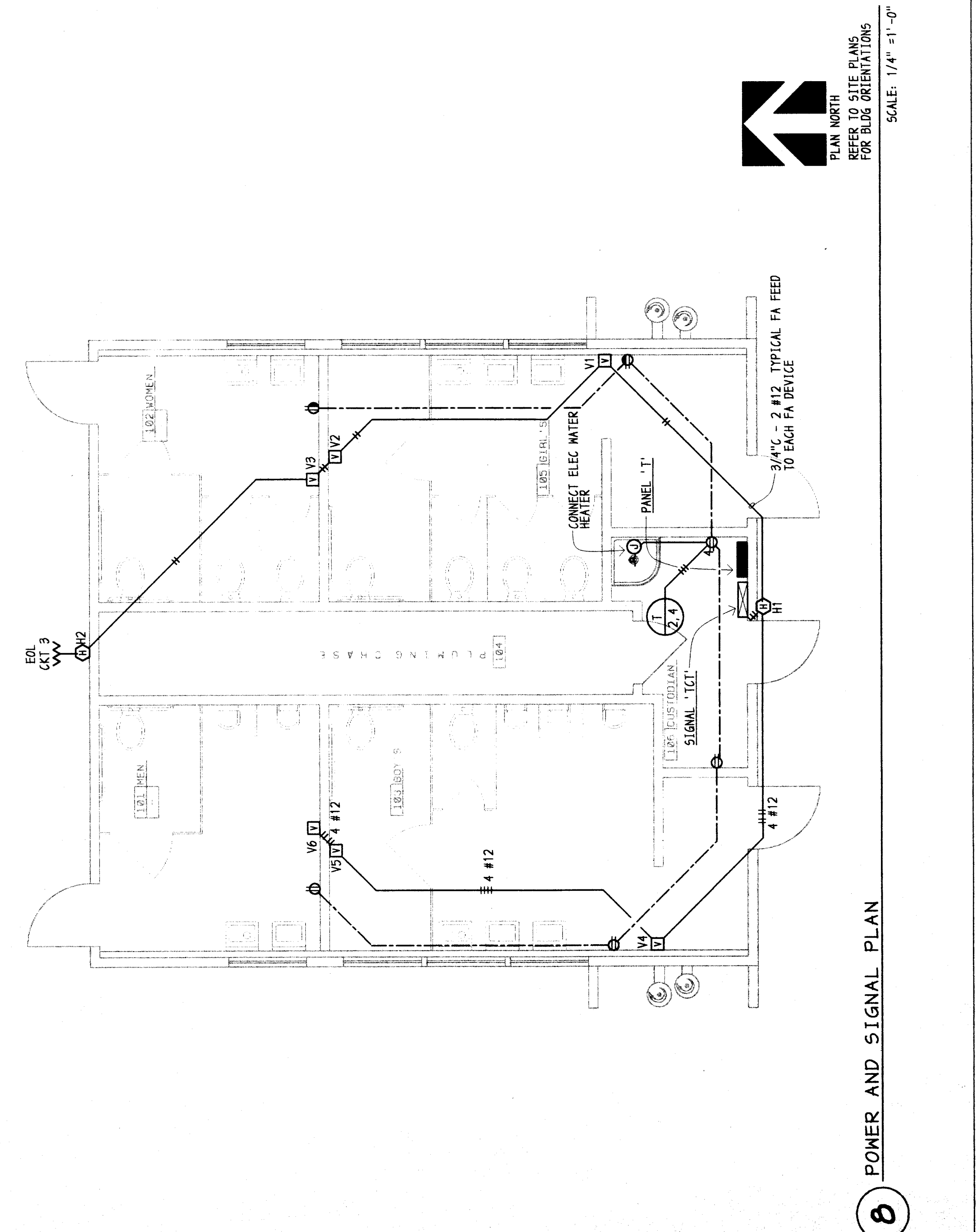
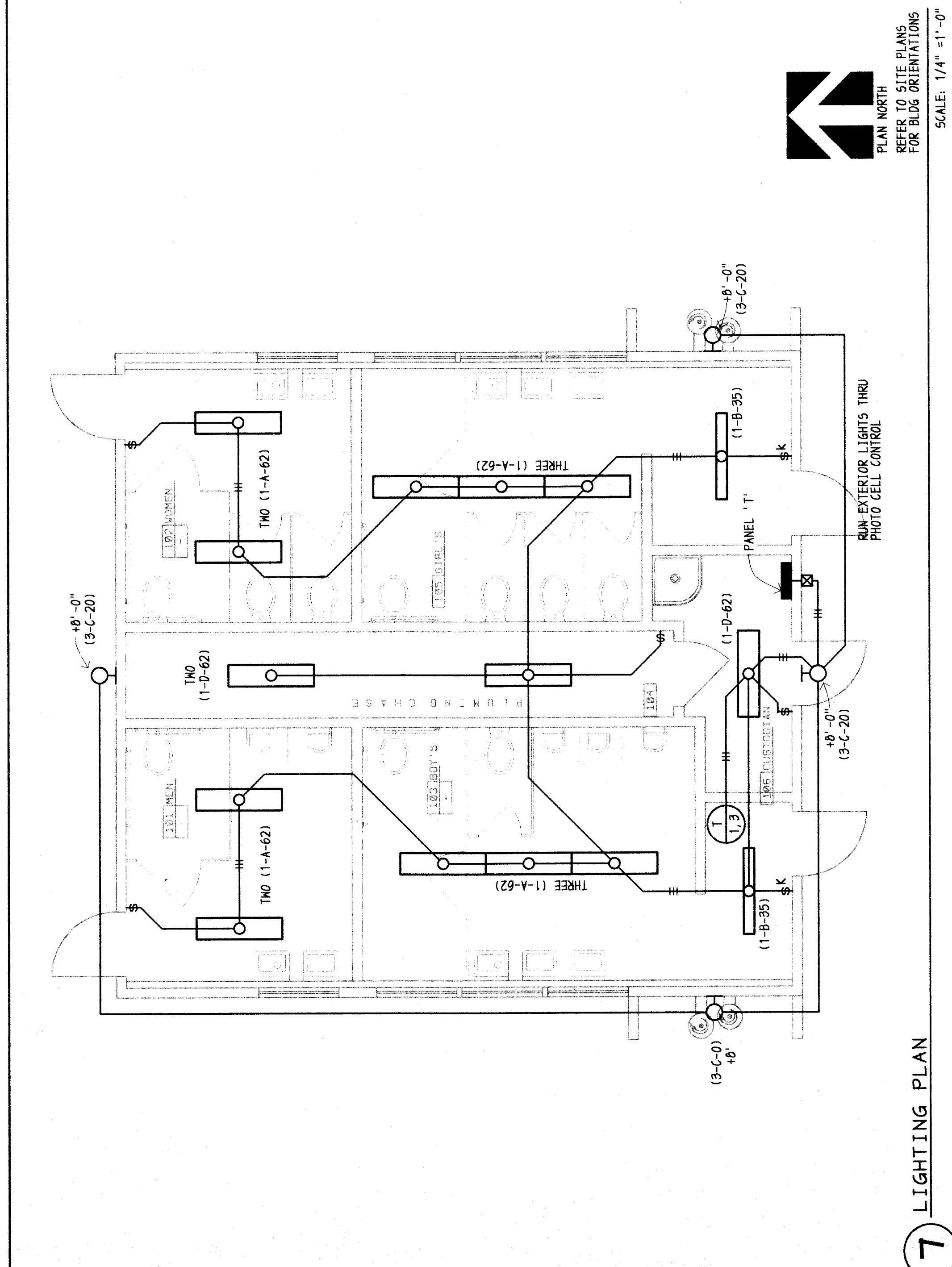
→	CONDUIT RUN IN MALL OR ATTIC (1/2" - 2 #12 AWG THIN + 1 #12 GND)
→	CONDUIT RUN IN FLOOR OR US (1/2" - 2 #12 AWG THIN + 1 #12 GND)
U.O.N.	UNLESS OTHERWISE NOTED
⊕	DUPLEX RECEPTACLE - GRCI +18"
⊕	DUPLICATE RECEPTACLE +18"
⊕	LIGHT SWITCH +40" *k= KEY SWITCH
(E)	DEMOTES "EXISTING"
⊕	FIRE ALARM DEVICES PER PLAN
⊕	FLUORESCENT LIGHT FIXTURE - CEILING MOUNT
⊕	MALL BRACKET LIGHT FIXTURE
⊕	PHOTO CELL CONTROL

FIXTURE SCHEDULE

FIXTURE SYMBOL (3-A-62)	3 = CIRCUIT NUMBER	A = FIXTURE TYPE	62 = FIXTURE MOUNTAGE
ALL FLUORESCENT LAMPS TO BE OSRAM SYLVANIA "ACTRON" TO (F092/900P) OR EQUAL, U.O.N.			
ALL FLUORESCENT BALLASTS TO BE SOLID STATE ELECTRONIC TYPE, ADVANCE "STANDARD" OR EQUAL, U.O.N.			
TYPE	MOUNT	CATALOG NO.	NOTES
A	2-F55 T8 115	KEMWLL	1270-4500 SURFACE NON DESTRUCT
B	1-F95 T8 115	KEMWLL	7140 SURFACE NON DESTRUCT
C	T8 PL	KEMWLL	4026 MALL NON DESTRUCT
D	2-F95 T8 115	COLUMBIA	MCA-292 CEILING

PANEL T.T.

NO.	VOLTS	1.0	3.0	MITE	10,000	BREAKER A.I.C.
1	120	100	4"	4"	MAX ENCL. DEPTH	4"
2	120	100	4"	4"	MAX ENCL. DEPTH	4"
3	120	100	4"	4"	MAX ENCL. DEPTH	4"
4	120	100	4"	4"	MAX ENCL. DEPTH	4"
5	120	100	4"	4"	MAX ENCL. DEPTH	4"
6	120	100	4"	4"	MAX ENCL. DEPTH	4"
7	120	100	4"	4"	MAX ENCL. DEPTH	4"
8	120	100	4"	4"	MAX ENCL. DEPTH	4"
9	120	100	4"	4"	MAX ENCL. DEPTH	4"
10	120	100	4"	4"	MAX ENCL. DEPTH	4"
11	120	100	4"	4"	MAX ENCL. DEPTH	4"
12	120	100	4"	4"	MAX ENCL. DEPTH	4"



COMPLETE FIRE ALARM PLAN SUBMITTAL

THE FIRE ALARM SYSTEM SHOWN ON THESE PLANS HAS BEEN SUBMITTED AND APPROVED BY THE DIVISION OF THE STATE ARCHITECT. ANY SUBSTITUTION, OMISSION AND APPROVAL OF THE CONTRACTOR SHALL PAY ANY ADDITIONAL FEES THAT ARE INCURRED DUE TO THIS SUBSTITUTION.

SCA Architecture
 1100 L Street, Suite 100
 Visalia, CA 93222-6705
 All Rights Reserved