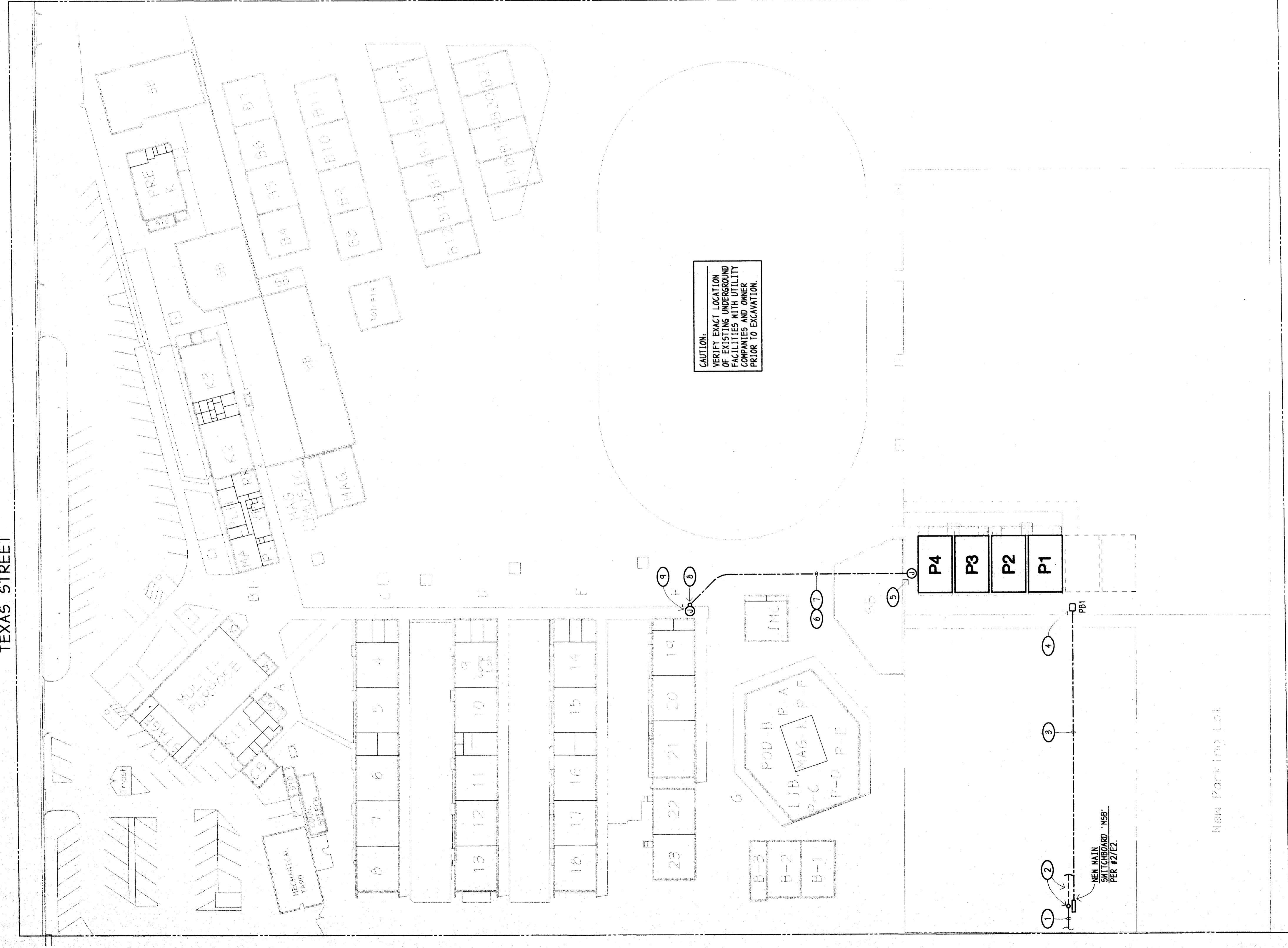
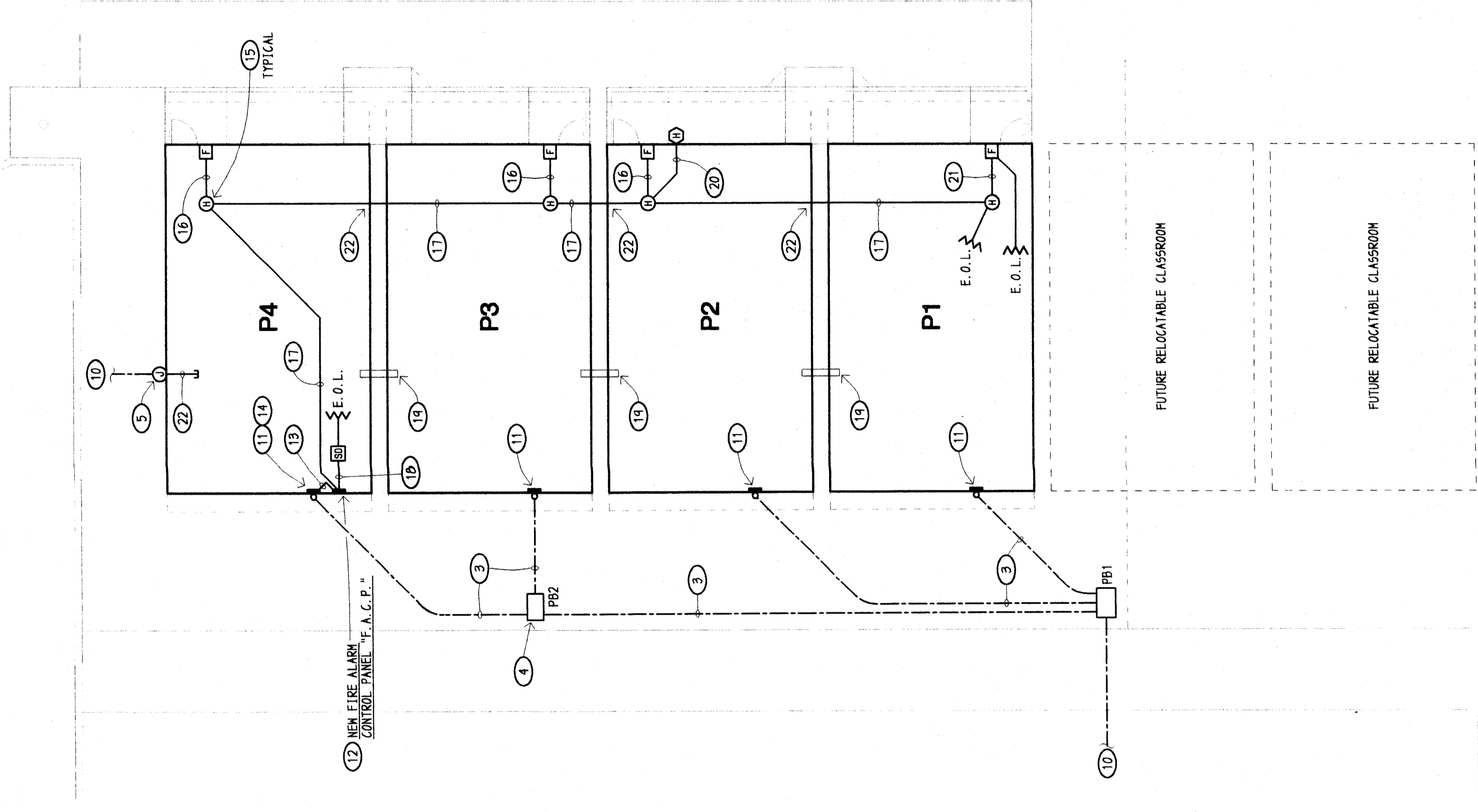


UTILITY COMPANY REQUIREMENTS
 VERIFY AND COMPLY WITH ALL UTILITY COMPANY REQUIREMENTS BEFORE BIDDING
 JOB AND BEFORE CONSTRUCTION.
 P.G. & E.
 JOHN GIL PH. (661) 990-5472

- NOTES (THIS SHEET ONLY):
1. NEW OVERHEAD SERVICE BY P.G. & E.
 2. PROVIDE A NEW WOOD SERVICE POLE WITH SERVICE RISER CONDUIT SERVICE ENTRANCE CAP, PIPE STRAPS, DOWN GUY, ETC. PER P.G. & E. REQUIREMENTS.
 3. REFER TO ONE LINE DIAGRAM, DETAIL #2/ES FOR FEEDER REQUIREMENTS.
 4. REFER TO DETAIL #2/ES FOR PULL BOX REQUIREMENTS.
 5. PROVIDE AN 18" H x 18" W x 6" DP NEHA 3R GREEN COVER CAN AND SURFACE MOUNT ON RELOCATABLE CLASSROOM AT + 10' A.F. 6. TO BOTTOM OF CAN.
 6. THREE 1 1/2" C (WITH A NYLON PULL STRING INSIDE EACH).
 7. COORDINATE EXACT ROUTE AT SITE WITH OWNER. CONTRACTOR SHALL SMOOT AND PATCH EXISTING AC PAVING OR CONCRETE SLAB TO MATCH ADJACENT SURFACES.
 8. ROUTE CONDUITS UP ON EXISTING WALL/COVER POST AND THEN ON TO THE ROOF OF WALLCOVER. COORDINATE EXACT LOCATION ON POST AT SITE. PROVIDE SUPPORT CHANNELS WITH PIPE STRAPS, U-BOLTS, ETC. AS REQUIRED.
 9. PROVIDE A 20" H x 20" W x 6" DP NEHA 4 SINGLE DOOR ENCLOSURE AND SURFACE MOUNT ON TO THE ROOF OF EXISTING WALLCOVER. REFER TO DETAIL #1/1/ES.
 10. REFER TO SITE ELECTRICAL PLAN AT LEFT FOR CONTINUATION.
 11. CONNECT SUB-PANEL SUPPLIED WITH RELOCATABLE CLASSROOM. COORDINATE EXACT LOCATION AT SITE.
 12. SURFACE MOUNT NEW FIRE ALARM CONTROL PANEL "F.A.C.P." INSIDE RELOCATABLE CLASSROOM. PROVIDE 1 1/2" C BETWEEN METAL RACEWAY SYSTEM (W/RECORD #14000/02C OR EQUAL) FROM TOP OF ENCLOSURE TO + 6" ABOVE THE SUSPENDED T-BAR CEILING FOR ROUTING OF FIRE ALARM CONDUITS. PROVIDE AN ENTRANCE END FITTING FOR TERMINATION OF CONDUITS.
 13. PROVIDE A SURFACE METAL RACEWAY SYSTEM (W/RECORD #7000 OR EQUAL) BETWEEN THE FIRE ALARM CONTROL PANEL AND THE ELEC. RACK. PROVIDE A NEW 20/1 CIRCUIT BREAKER. PROVIDE ALL NECESSARY CONNECTORS, FITTINGS, MOUNTING HARDWARE, ETC. AS REQUIRED.
 14. PROVIDE A NEW 20/1 CIRCUIT BREAKER WITH LOCK-ON ACCESSORY AND INSTALL IN SUB-PANEL.
 15. FLUSH MOUNT MINI-HORN IN SUSPENDED T-BAR CEILING. PROVIDE A T-BAR BOX HANGER (CADDY #512 OR EQUAL).
 16. PULL-IN 4 #14 INSIDE EMPTY CONDUIT SUPPLIED WITH RELOCATABLE CLASSROOM.
 17. 3/4" C - 2 #14, 2 #12.
 18. 1/2" C - 2 #14.
 19. PROVIDE THREE 1 1/2" C SPACES BETWEEN ACCESSIBLE ATTIC SPACES OF ADJACENT RELOCATABLE CLASSROOMS. CONDUIT SLEEVES SHALL EXTEND INTO EACH ATTIC SPACE A MINIMUM OF 12". DRILL THRU PLYWOOD SIDING AND SEAL AROUND CONDUIT PENETRATIONS AS REQUIRED.
 20. PULL-IN 4 #12 INSIDE EMPTY CONDUIT SUPPLIED WITH RELOCATABLE CLASSROOM.
 21. PULL-IN 2 #14 INSIDE EMPTY CONDUIT SUPPLIED WITH RELOCATABLE CLASSROOM.
 22. DRILL THRU PLYWOOD SIDING AND SEAL AROUND CONDUIT PENETRATION AS REQUIRED.



PARTIAL SITE ELECTRICAL PLAN
 1" = 10' - 0"

SITE ELECTRICAL PLAN
 1" = 40' - 0"