

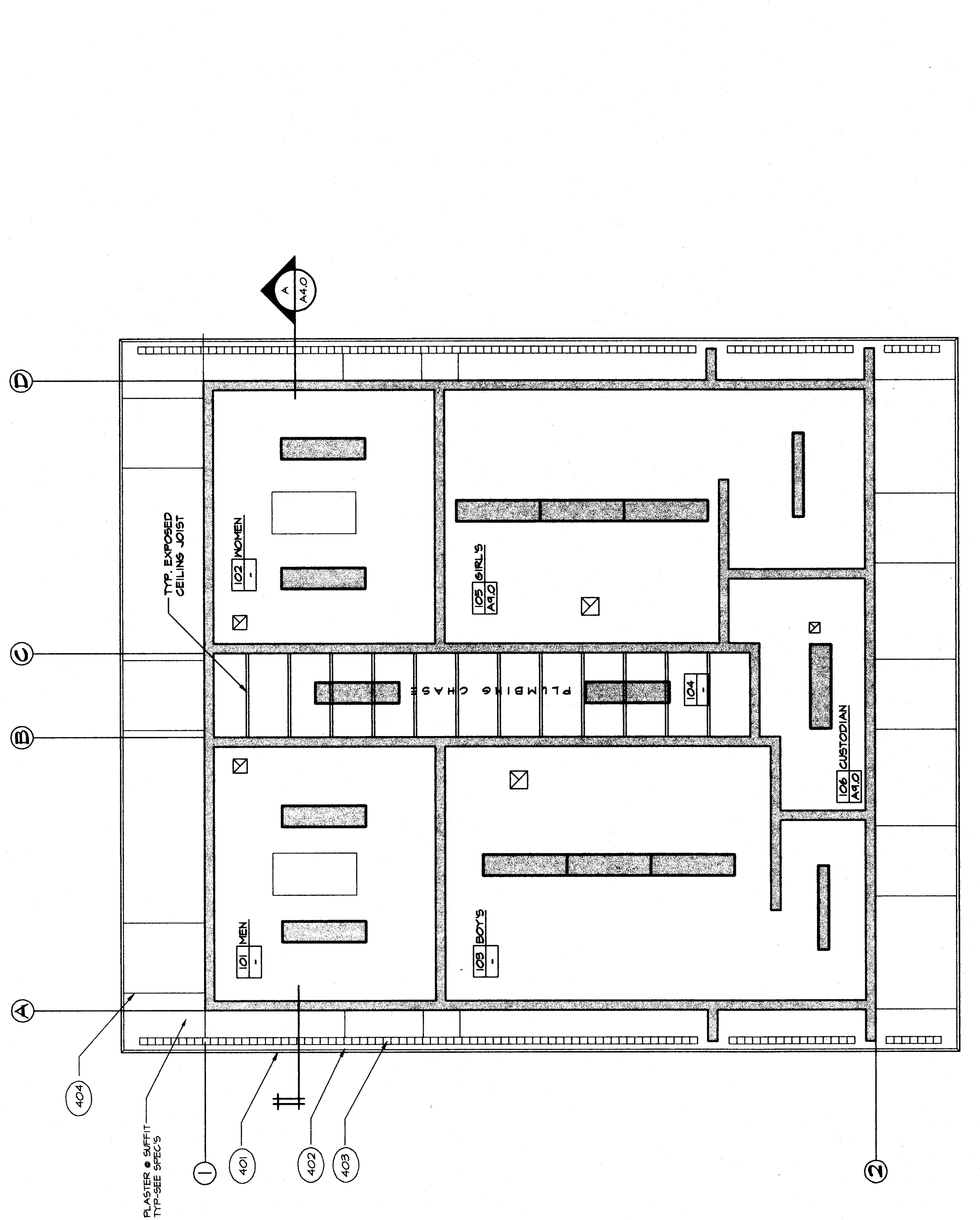
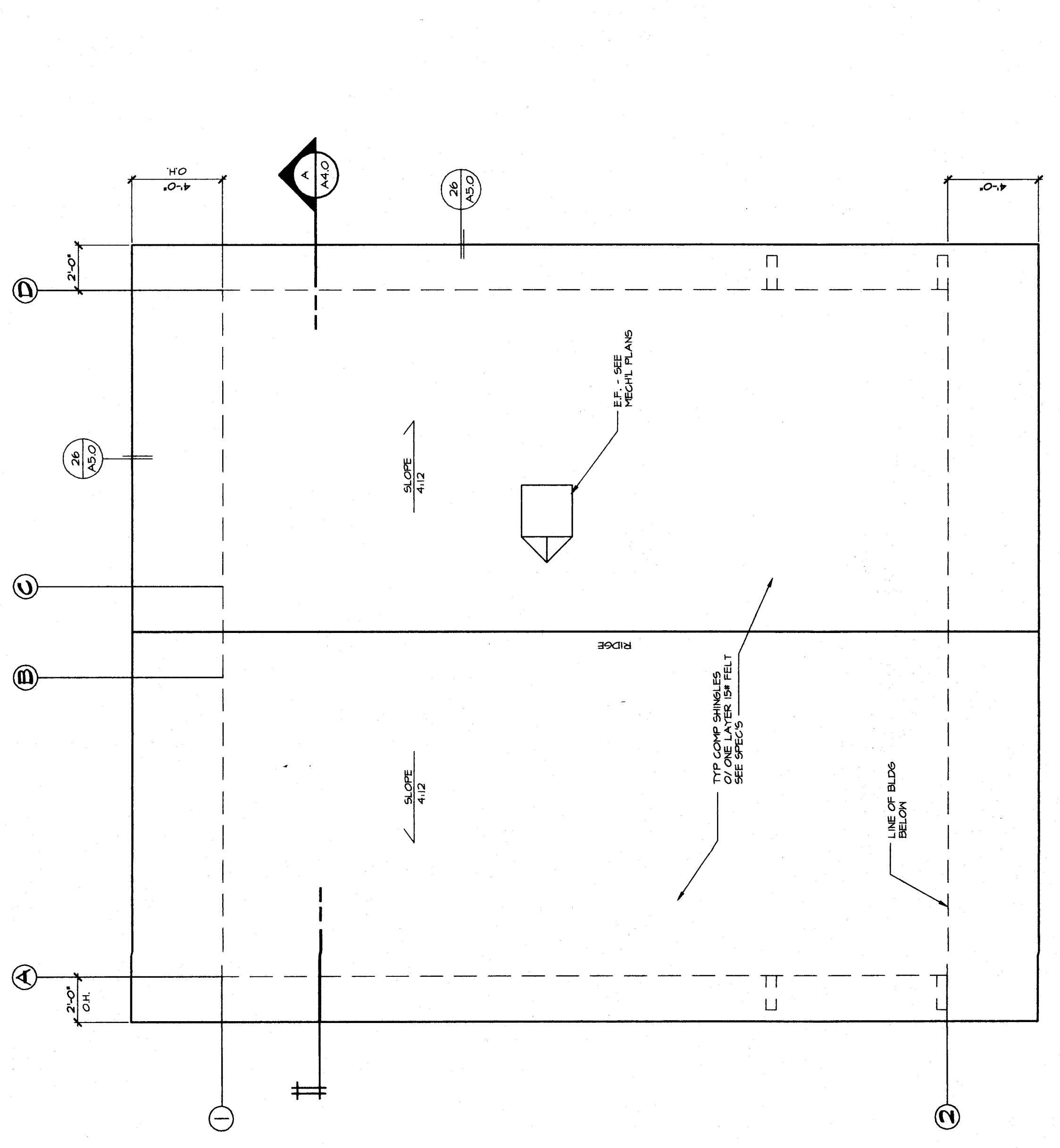
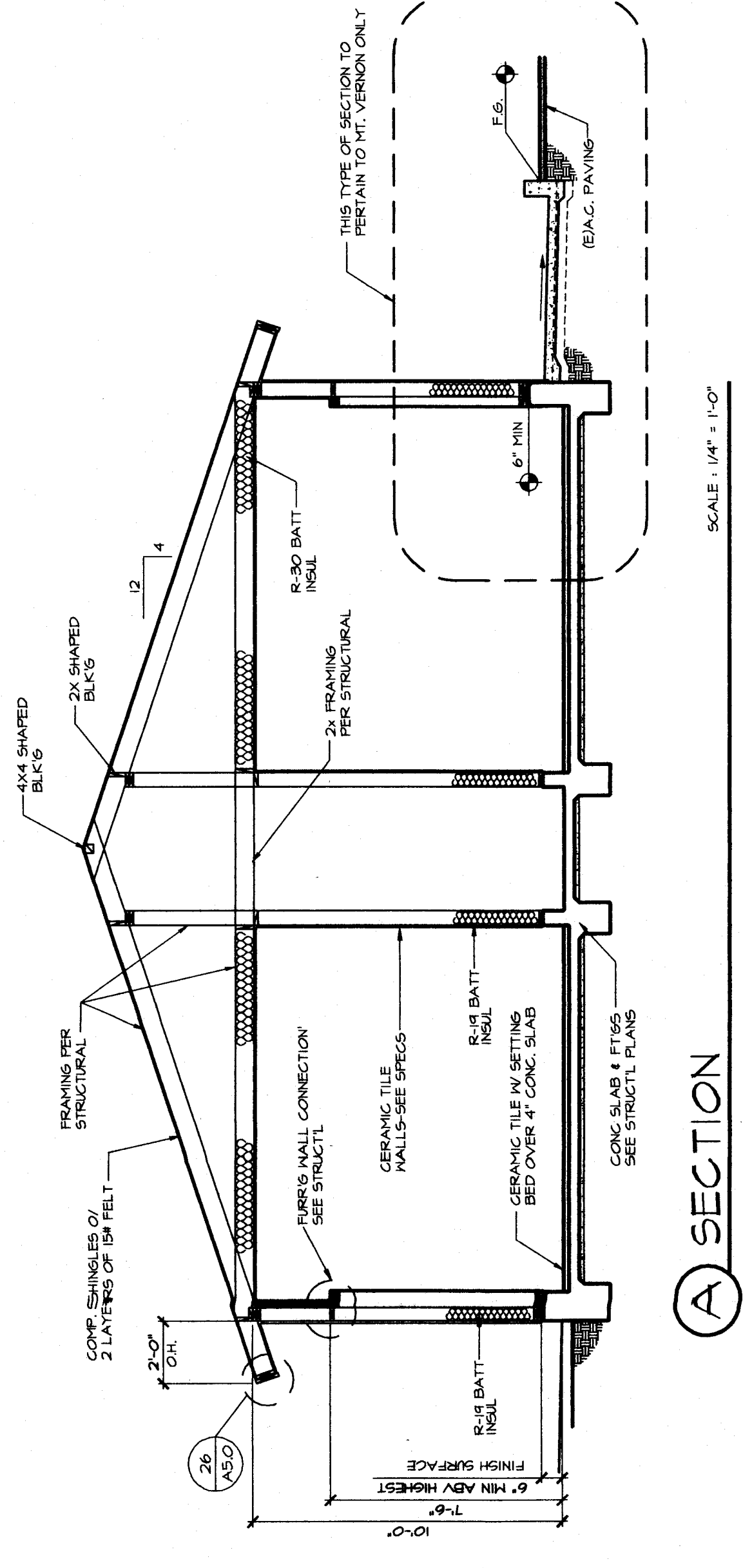
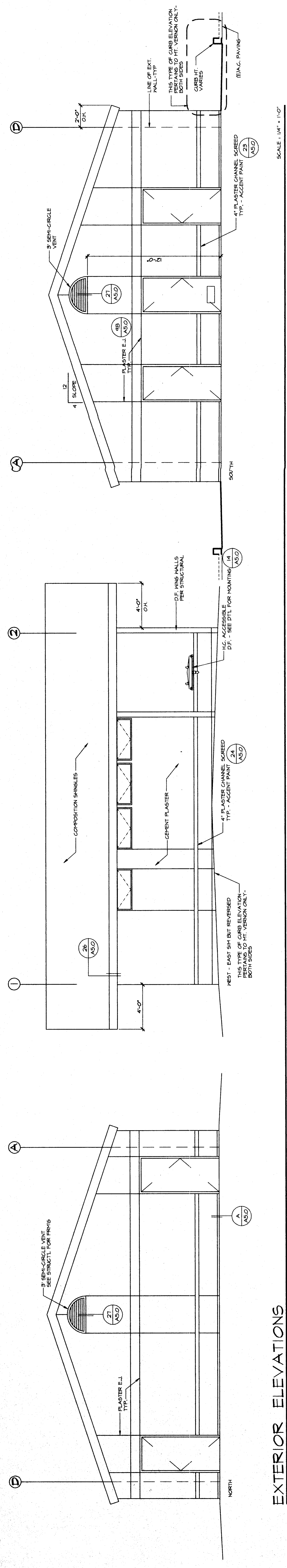
IDENTIFICATION STAMP
 DIVISION OF REGISTRATION SERVICES
 APR 15 1978
 MECHANICAL
 STATE OF CALIFORNIA

**RESTROOM BUILDINGS
 AND RELOCATABLE CLASSROOMS
 FOR
 AT FREMONT AND MT. VERNON ELEMENTARY SCHOOLS
 BAKERSFIELD, KERN COUNTY, CALIFORNIA**

**EXTERIOR
 ELEVATIONS
 SECTIONS
 ROOF PLAN
 REFLECTED
 CEILING**

CHECK AND VERIFY ALL DIMENSIONS
 BEFORE PROCEEDING WITH THE
 WORK. REPORT DISCREPANCIES
 TO THE ARCHITECT. ALL
 CONSTRUCTION SHALL CONFORM
 TO THE C.I.B.C.

MARK	DATE	REVISIONS



REFLECTED CEILING LEGEND

- Surface Mount Lights - See Electrical Drawings
- Ceiling Registers - See Mechanical Drawings
- Ceiling Heaters - See Mechanical Drawings
- Plaster Fin Ceiling - Paint TYP

KEYNOTES

- 401 2x FASCIA TYP - PAINT (ASO)
- 402 2x SHINGLE STOP TYP - PAINT
- 403 VENT SCREED TYP - SEE
- 404 PLASTER SCREED TYP - SEE

REFLECTED CEILING PLAN NOTES:

- ALL ELEVATIONS NOTED ARE REFERENCED FROM FINISH FLOOR.
- SEE ROOF FINISH SCHEDULE FOR CEILING FINISHES.
- ALL PLASTER SHALL BE IN LINE WITH PLASTER SCREED ON FACE OF WALL - SEE EXTERIOR ELEVATIONS

NOTE: ALL PLASTER SCREEDS ON UNDERSIDE OF OVERHANGS SHALL BE IN LINE WITH PLASTER SCREED ON FACE OF WALL - SEE EXTERIOR ELEVATIONS