

INTERIOR ELEVATIONS

- KEYNOTES:**
- (01) MALL FIN. - SEE INT FIN SCH
 - (02) MIRROR - SEE SPECS
 - (03) TOILET PAPER DISP
 - (04) SEAT COVER DISPENSER
 - (05) FEMINE MARKIN DISPENSER
 - (06) FEMINE MARKIN DISPOSAL
 - (07) HAND DRYER - SEE SPECS
 - (08) MALL FIN. - SEE INT FIN SCH
 - (09) BASE - SEE INT FIN SCH
 - (10) URINAL & REGS
 - (11) LAVATORY & REGS
 - (12) SOLID PLASTIC PARTITIONS
 - (13) GRAB BAR - 48" AT SIDE AND 36" AT BACK
 - (14) SOAP DISPENSER
 - (15) CABINERY
- GENERAL NOTES:**
- 1. FOR ALL ACCESSORY MOUNTING REFER TO (A) (B) (C) (D) (E) (F) (G) (H) (I) (J) (K) (L) (M) (N) (O) (P) (Q) (R) (S) (T) (U) (V) (W) (X) (Y) (Z) (AA) (AB) (AC) (AD) (AE) (AF) (AG) (AH) (AI) (AJ) (AK) (AL) (AM) (AN) (AO) (AP) (AQ) (AR) (AS) (AT) (AU) (AV) (AW) (AX) (AY) (AZ) (BA) (BB) (BC) (BD) (BE) (BF) (BG) (BH) (BI) (BJ) (BK) (BL) (BM) (BN) (BO) (BP) (BQ) (BR) (BS) (BT) (BU) (BV) (BW) (BX) (BY) (BZ) (CA) (CB) (CC) (CD) (CE) (CF) (CG) (CH) (CI) (CJ) (CK) (CL) (CM) (CN) (CO) (CP) (CQ) (CR) (CS) (CT) (CU) (CV) (CW) (CX) (CY) (CZ) (DA) (DB) (DC) (DD) (DE) (DF) (DG) (DH) (DI) (DJ) (DK) (DL) (DM) (DN) (DO) (DP) (DQ) (DR) (DS) (DT) (DU) (DV) (DW) (DX) (DY) (DZ) (EA) (EB) (EC) (ED) (EE) (EF) (EG) (EH) (EI) (EJ) (EK) (EL) (EM) (EN) (EO) (EP) (EQ) (ER) (ES) (ET) (EU) (EV) (EW) (EX) (EY) (EZ) (FA) (FB) (FC) (FD) (FE) (FF) (FG) (FH) (FI) (FJ) (FK) (FL) (FM) (FN) (FO) (FP) (FQ) (FR) (FS) (FT) (FU) (FV) (FW) (FX) (FY) (FZ) (GA) (GB) (GC) (GD) (GE) (GF) (GG) (GH) (GI) (GJ) (GK) (GL) (GM) (GN) (GO) (GP) (GQ) (GR) (GS) (GT) (GU) (GV) (GW) (GX) (GY) (GZ) (HA) (HB) (HC) (HD) (HE) (HF) (HG) (HH) (HI) (HJ) (HK) (HL) (HM) (HN) (HO) (HP) (HQ) (HR) (HS) (HT) (HU) (HV) (HW) (HX) (HY) (HZ) (IA) (IB) (IC) (ID) (IE) (IF) (IG) (IH) (II) (IJ) (IK) (IL) (IM) (IN) (IO) (IP) (IQ) (IR) (IS) (IT) (IU) (IV) (IW) (IX) (IY) (IZ) (JA) (JB) (JC) (JD) (JE) (JF) (JG) (JH) (JI) (JJ) (JK) (JL) (JM) (JN) (JO) (JP) (JQ) (JR) (JS) (JT) (JU) (JV) (JW) (JX) (JY) (JZ) (KA) (KB) (KC) (KD) (KE) (KF) (KG) (KH) (KI) (KJ) (KK) (KL) (KM) (KN) (KO) (KP) (KQ) (KR) (KS) (KT) (KU) (KV) (KW) (KX) (KY) (KZ) (LA) (LB) (LC) (LD) (LE) (LF) (LG) (LH) (LI) (LJ) (LK) (LL) (LM) (LN) (LO) (LP) (LQ) (LR) (LS) (LT) (LU) (LV) (LW) (LX) (LY) (LZ) (MA) (MB) (MC) (MD) (ME) (MF) (MG) (MH) (MI) (MJ) (MK) (ML) (MN) (MO) (MP) (MQ) (MR) (MS) (MT) (MU) (MV) (MW) (MX) (MY) (MZ) (NA) (NB) (NC) (ND) (NE) (NF) (NG) (NH) (NI) (NJ) (NK) (NL) (NM) (NO) (NP) (NQ) (NR) (NS) (NT) (NU) (NV) (NW) (NX) (NY) (NZ) (OA) (OB) (OC) (OD) (OE) (OF) (OG) (OH) (OI) (OJ) (OK) (OL) (OM) (ON) (OO) (OP) (OQ) (OR) (OS) (OT) (OU) (OV) (OW) (OX) (OY) (OZ) (PA) (PB) (PC) (PD) (PE) (PF) (PG) (PH) (PI) (PJ) (PK) (PL) (PM) (PN) (PO) (PP) (PQ) (PR) (PS) (PT) (PU) (PV) (PW) (PX) (PY) (PZ) (QA) (QB) (QC) (QD) (QE) (QF) (QG) (QH) (QI) (QJ) (QK) (QL) (QM) (QN) (QO) (QP) (QQ) (QR) (QS) (QT) (QU) (QV) (QW) (QX) (QY) (QZ) (RA) (RB) (RC) (RD) (RE) (RF) (RG) (RH) (RI) (RJ) (RK) (RL) (RM) (RN) (RO) (RP) (RQ) (RR) (RS) (RT) (RU) (RV) (RW) (RX) (RY) (RZ) (SA) (SB) (SC) (SD) (SE) (SF) (SG) (SH) (SI) (SJ) (SK) (SL) (SM) (SN) (SO) (SP) (SQ) (SR) (SS) (ST) (SU) (SV) (SW) (SX) (SY) (SZ) (TA) (TB) (TC) (TD) (TE) (TF) (TG) (TH) (TI) (TJ) (TK) (TL) (TM) (TN) (TO) (TP) (TQ) (TR) (TS) (TT) (TU) (TV) (TW) (TX) (TY) (TZ) (UA) (UB) (UC) (UD) (UE) (UF) (UG) (UH) (UI) (UJ) (UK) (UL) (UM) (UN) (UO) (UP) (UQ) (UR) (US) (UT) (UU) (UV) (UW) (UX) (UY) (UZ) (VA) (VB) (VC) (VD) (VE) (VF) (VG) (VH) (VI) (VJ) (VK) (VL) (VM) (VN) (VO) (VP) (VQ) (VR) (VS) (VT) (VU) (VV) (VW) (VX) (VY) (VZ) (WA) (WB) (WC) (WD) (WE) (WF) (WG) (WH) (WI) (WJ) (WK) (WL) (WM) (WN) (WO) (WP) (WQ) (WR) (WS) (WT) (WU) (WV) (WW) (WX) (WY) (WZ) (XA) (XB) (XC) (XD) (XE) (XF) (XG) (XH) (XI) (XJ) (XK) (XL) (XM) (XN) (XO) (XP) (XQ) (XR) (XS) (XT) (XU) (XV) (XW) (XX) (XY) (XZ) (YA) (YB) (YC) (YD) (YE) (YF) (YG) (YH) (YI) (YJ) (YK) (YL) (YM) (YN) (YO) (YP) (YQ) (YR) (YS) (YT) (YU) (YV) (YW) (YX) (YZ) (ZA) (ZB) (ZC) (ZD) (ZE) (ZF) (ZG) (ZH) (ZI) (ZJ) (ZK) (ZL) (ZM) (ZN) (ZO) (ZP) (ZQ) (ZR) (ZS) (ZT) (ZU) (ZV) (ZW) (ZX) (ZY) (ZZ)

DOOR SCHEDULE

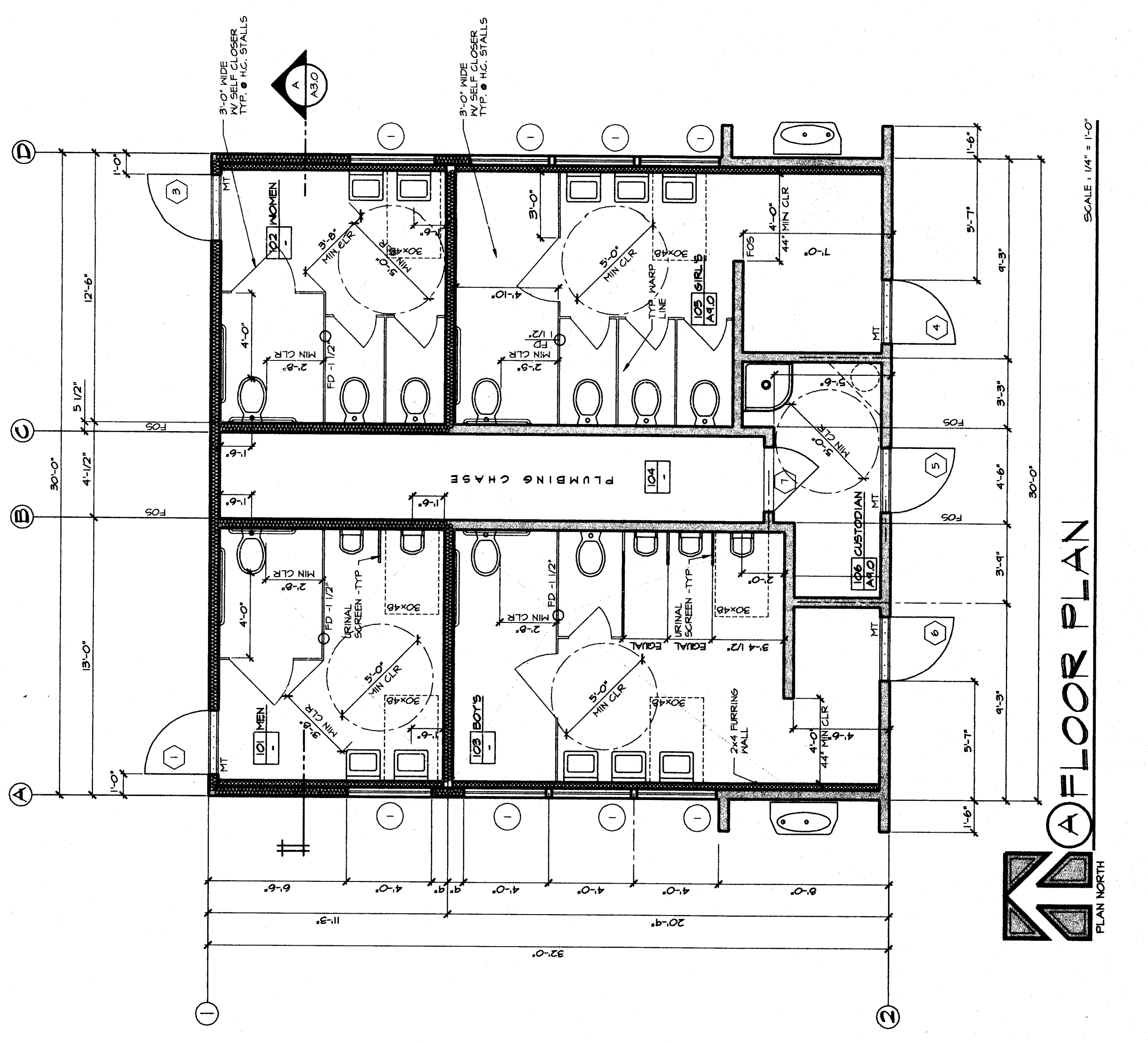
DOOR NO.	DOOR TYPE	DOOR SIZE (EA. LEAF)	MAT'L	LOWER SIZE	FRAME TYPE	MAT'L	RATING	H/M/W	DETAILS	L/JAMB	HEAD	K/JAMB	REMARKS
1	A	9'-0" x 7'-0"	H.M.		A	H.M.	1	16/AS	16/AS	16/AS	16/AS	16/AS	SEE DOOR NOTES #1 THRU #8
2	A	NOT USED											
3	A	9'-0" x 7'-0"	H.M.		A	H.M.	1	16/AS	16/AS	16/AS	16/AS	16/AS	SEE DOOR NOTES #1 THRU #8
4	A	9'-0" x 7'-0"	H.M.		A	H.M.	2	16/AS	16/AS	16/AS	16/AS	16/AS	SEE DOOR NOTES #1 THRU #8
5	A	9'-0" x 7'-0"	H.M.		A	H.M.	3	16/AS	16/AS	16/AS	16/AS	16/AS	SEE DOOR NOTES #1 THRU #8
6	A	9'-0" x 7'-0"	H.M.		A	H.M.	2	16/AS	16/AS	16/AS	16/AS	16/AS	SEE DOOR NOTES #1 THRU #8
7	A	9'-0" x 7'-0"	H.M.		A	H.M.	4	16/AS	16/AS	16/AS	16/AS	16/AS	SEE DOOR NOTES #1 THRU #8

DOOR NOTES

- EXIT DOOR REQUIREMENTS:
ALL EXIT DOORS IN SCHOOL BUILDINGS INCLUDING BUT NOT LIMITED TO DOORS SHALL CONFORM WITH THE REQUIREMENTS OF SECTION 100351 TITLE 24, THE FOLLOWING EXIT DOORS SHALL BE OPERABLE FROM THE INSIDE WITHOUT THE USE OF A KEYS OR ANY SPECIAL KNOWLEDGE OR EFFORT.
HAND SET WATERED BY GREEN HARDWARE (INCHES) ABOVE THE FLOOR.
DEAD BOLTS ARE NOT PERMITTED UNLESS LEVER TYPE HARDWARE.
- ALL HOLLOW METAL DOOR & DOOR FRAMES SHALL BE PAINTED W/ SEMI-GLOSS ENAMEL.
- ADJUST DOOR CLOSING DEVICES TO 5 1/2 LBS. EXTERIOR & 5 LBS. INTERIOR.
- HANDICAP TOILET ROOM SIGNAGE
- DOOR LEVER REQUIREMENTS
- PROVIDE DOOR SIGNAGE PER SPECS
- MIN FLOOR SPACE REQUIREMENTS AT DOORS
- H/M DOOR FRAMES SHALL BE GROUDED

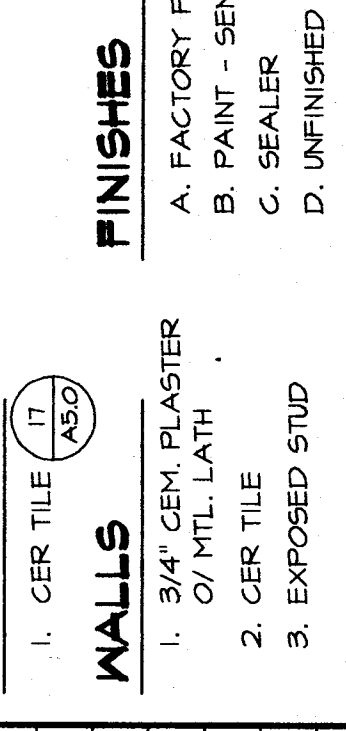
ROOM FINISH SCHEDULE ALL COLORS TO BE SELECTED BY ARCHITECT

ROOM NO.	DESCRIPTION	FLOOR			WALLS			CEILING			REMARKS
		FLOOR	BASE	MAT'L	NORTH	EAST	SOUTH	WEST	MAT'L	HEIGHT	
01	MEN	1A	1A	1B & 2A	1B & 2A	1B & 2A	1B & 2A	1B	10'-0"		
02	WOMEN	1A	1A	1B & 2A	1B & 2A	1B & 2A	1B & 2A	1B	10'-0"		
03	BOYS	1A	1A	1B & 2A	1B & 2A	1B & 2A	1B & 2A	1B	10'-0"		
04	PLUMBING CHASE	2C	NO BASE	3D	3D	3D	3D	2D	10'-0"		
05	GIRLS	1A	1A	1B & 2A	1B & 2A	1B & 2A	1B & 2A	1B	10'-0"		
06	CUSTODIAN	2C	1A	1B & 2A	1B & 2A	1B & 2A	1B & 2A	1B	10'-0"		



A FLOOR PLAN

- LEGEND**
- FLOORS**
1. CERAMIC MOSAIC TILE
2. CONCRETE
3. EXPOSED STUDS
- BASE**
1. 3/4" CON. PLASTER O/ MTL LATH FINISH SMOOTH
2. EXPOSED STUDS
- WALLS**
1. 3/4" CER. PLASTER O/ MTL LATH
2. CER TILE
3. EXPOSED STUD
4. UNFINISHED
- FINISHES**
A. FACTORY FINISH
B. PAINT - SEMI GLOSS ENAMEL
C. SEALER
D. UNFINISHED



WINDOW TYPE

1. ALUMINUM-OPERABLE

DOOR TYPE

1. HOLLOW METAL

DOOR TYPE

2. AS SCHEDULED

DOOR TYPE

3. AS SCHEDULED