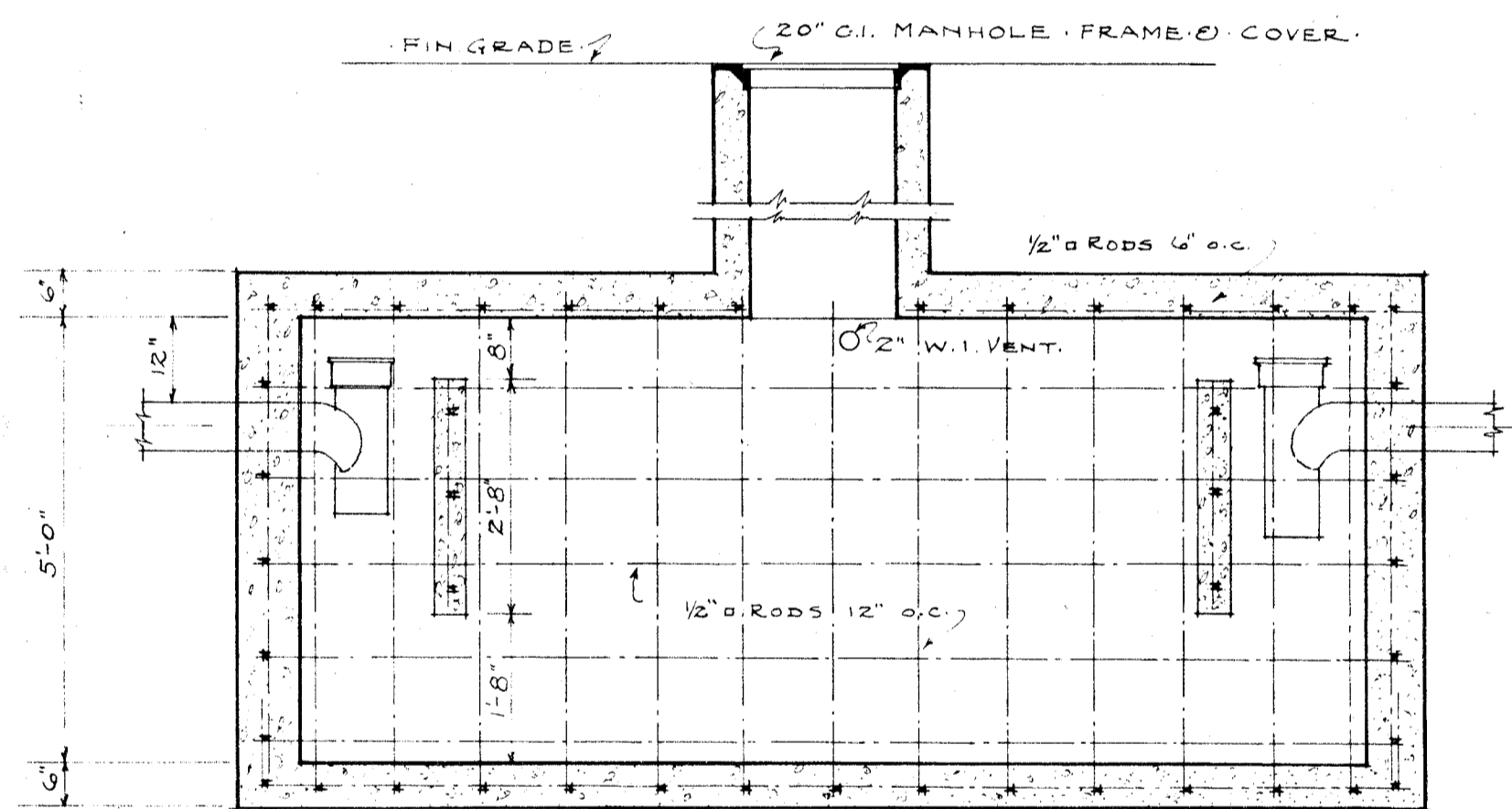
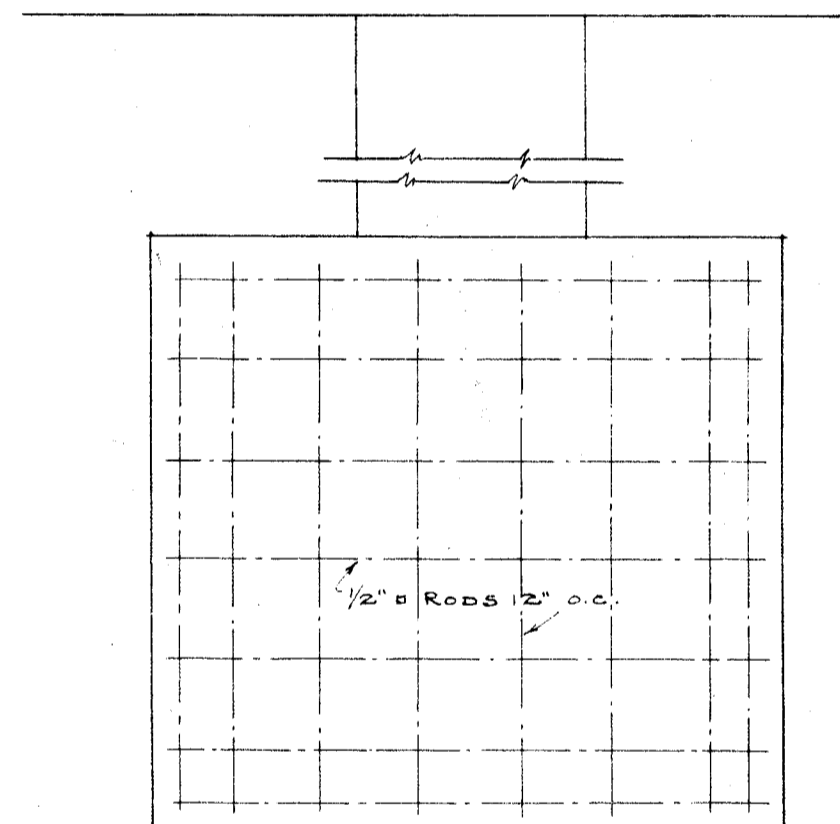


PLAN

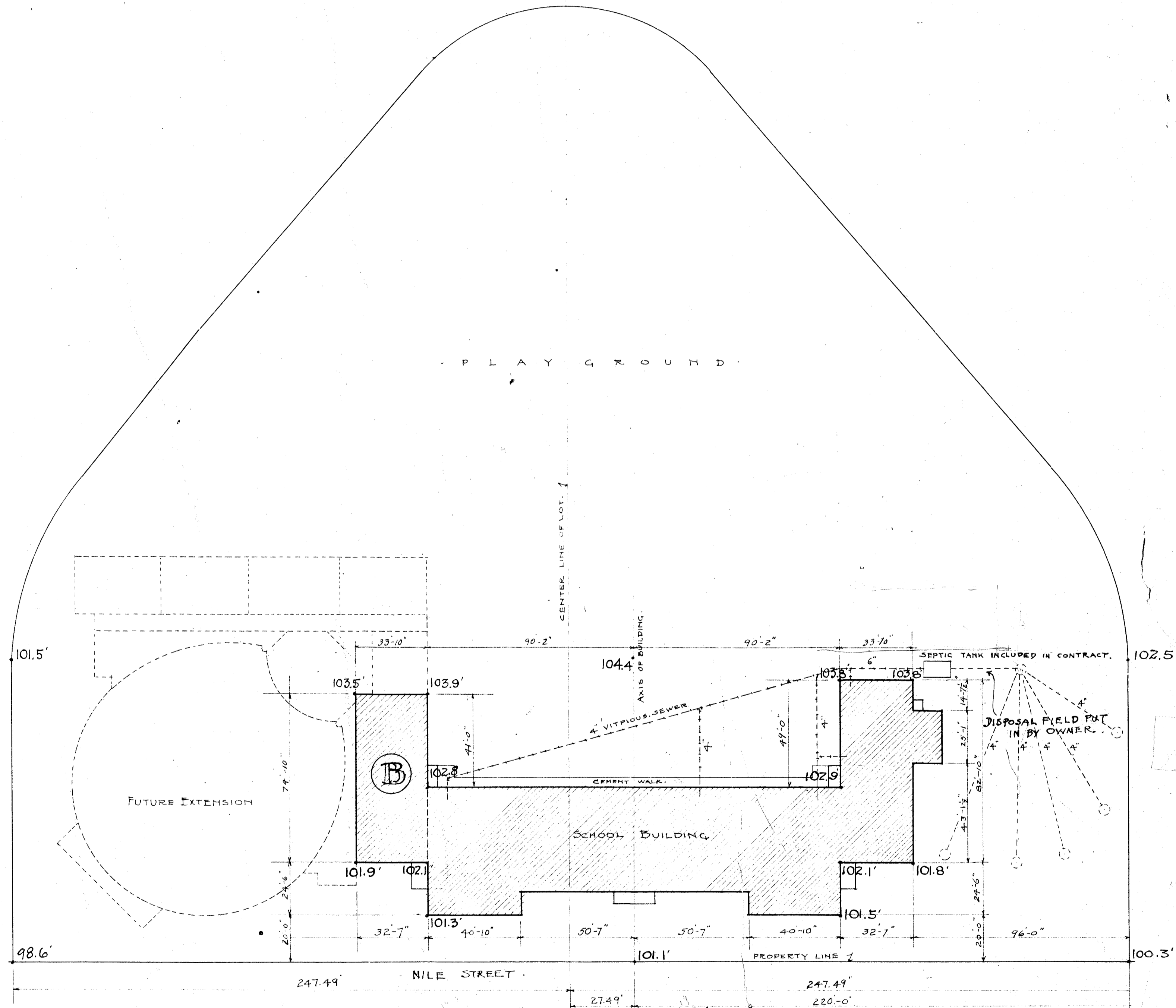


LONGITUDINAL SECTION

DETAILS OF SEPTIC TANK



END



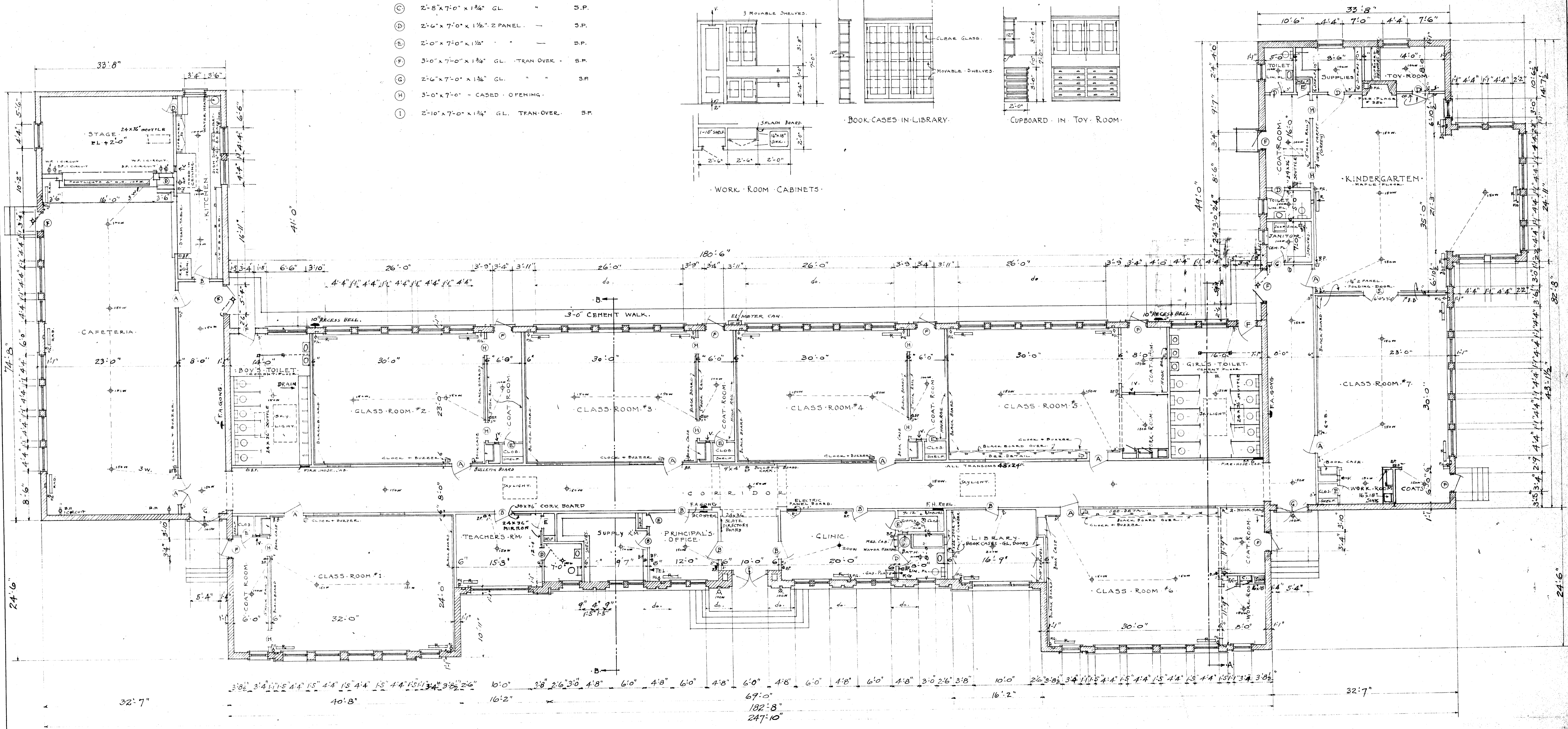
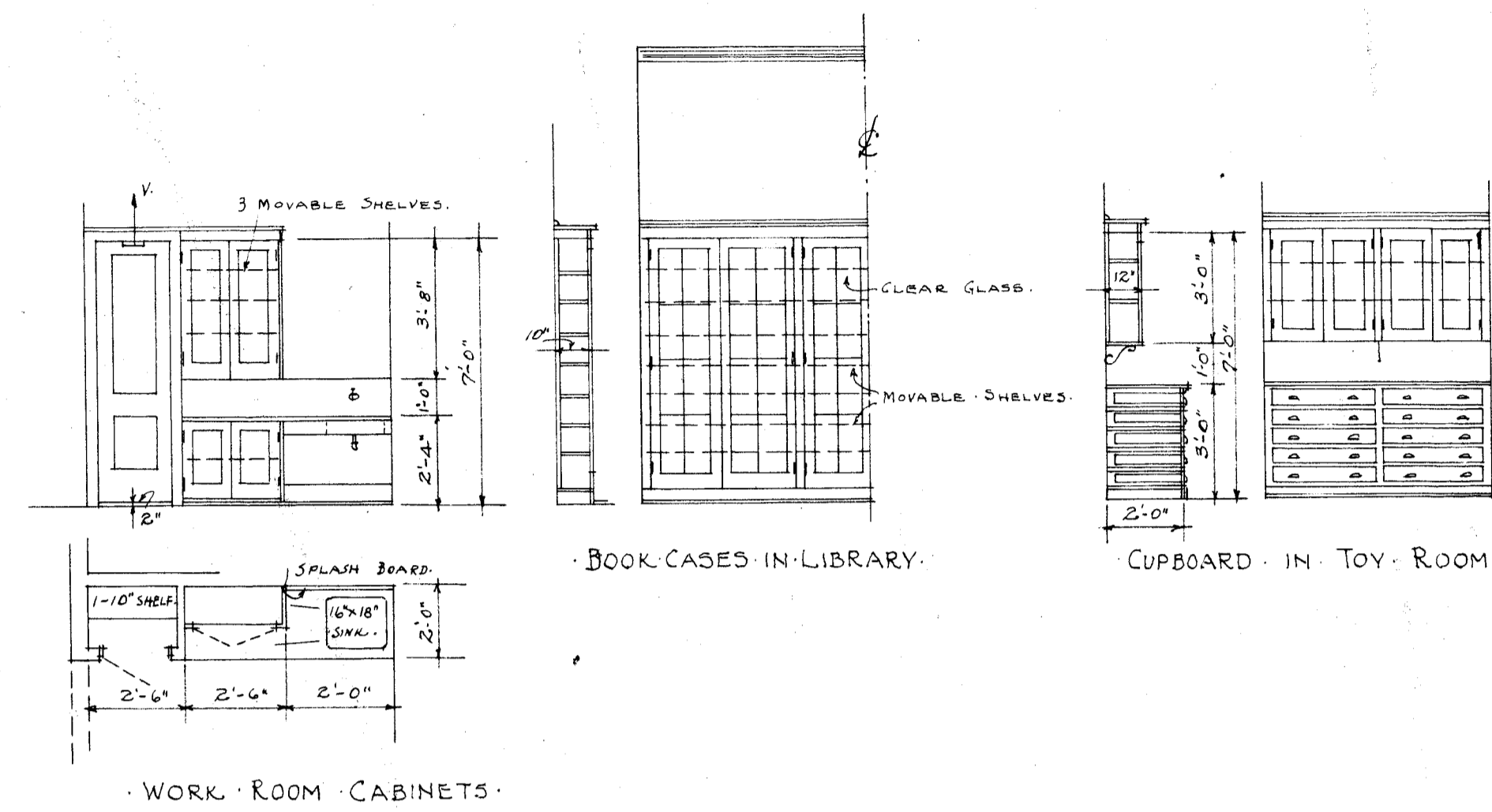
101.5' 103.5' 103.9' 104.4' 103.5' 103.5' 102.5'  
 98.6' 101.9' 102.1' 102.9' 102.1' 101.8' 100.3'  
 247.49' NILE STREET 27.49' 247.49' 220.0'  
 101.1' PROPERTY LINE 1  
 100.0' CURB SOUTH SIDE NILE ST.

HORACE MANN SCHOOL  
 BAKERSFIELD SCHOOL DISTRICT  
 NILE ST. BAKERSFIELD

CH. RUSH BIGGAR  
 ARCHITECT  
 405-406 BANK OF ITALY BLDG.  
 BAKERSFIELD, CALIFORNIA

DOOR SCHEDULE

- (A) 3'-4" x 7'-0" x 1 3/4" GL. TRAN-OVER - BIRCH
- (B) 2'-8" x 7'-0" x 1 3/4" GL. " "
- (C) 2'-8" x 7'-0" x 1 3/4" GL. " S.P.
- (D) 2'-6" x 7'-0" x 1 1/2" 2 PANEL. " S.P.
- (E) 2'-0" x 7'-0" x 1 1/2" " " S.P.
- (F) 3'-0" x 7'-0" x 1 3/4" GL. TRAN-OVER - S.P.
- (G) 2'-6" x 7'-0" x 1 3/4" GL. " S.P.
- (H) 3'-0" x 7'-0" - CASED - OPENING.
- (I) 2'-10" x 7'-0" x 1 3/4" GL. TRAN-OVER - S.P.



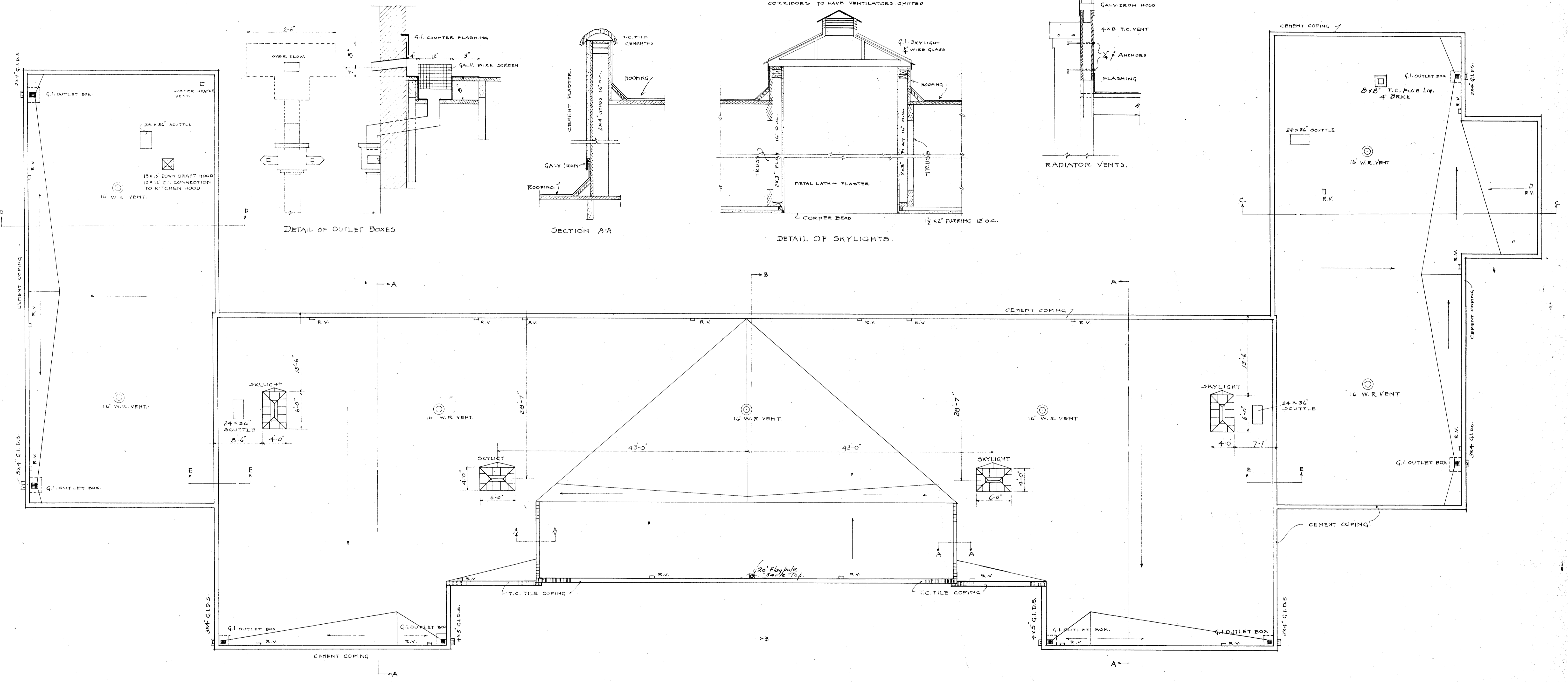
FLOOR PLAN

HORACE MANN SCHOOL  
 BAKERSFIELD SCHOOL DISTRICT  
 NILE ST. BAKERSFIELD

CHARLES H. BIGGAR  
 ARCHITECT  
 105-406 BANK OF ITALY BLDG.  
 BAKERSFIELD, CALIFORNIA

Note: Contractor to verify all dimensions on the work. This drawing is the property of the architect and must be returned on completion of the contract.

TWO SKYLIGHTS OVER TOILETS TO HAVE LOWER VENTILATORS AS SHOWN. SKYLIGHTS OVER CORRIDORS TO HAVE VENTILATORS OMITTED

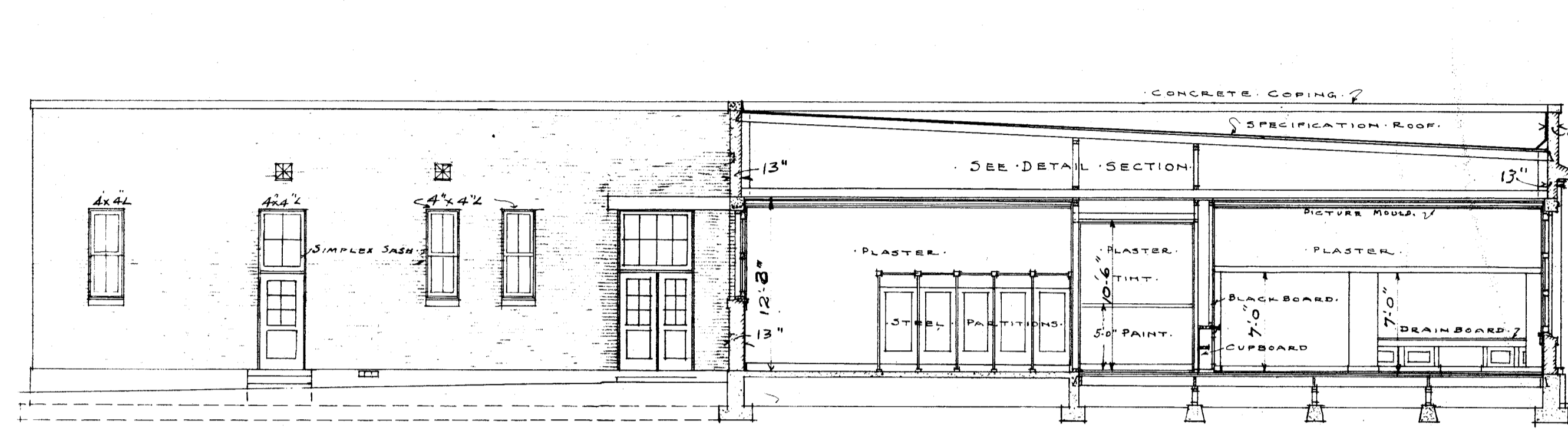


ROOF PLAN  
1/8" = 1'-0"

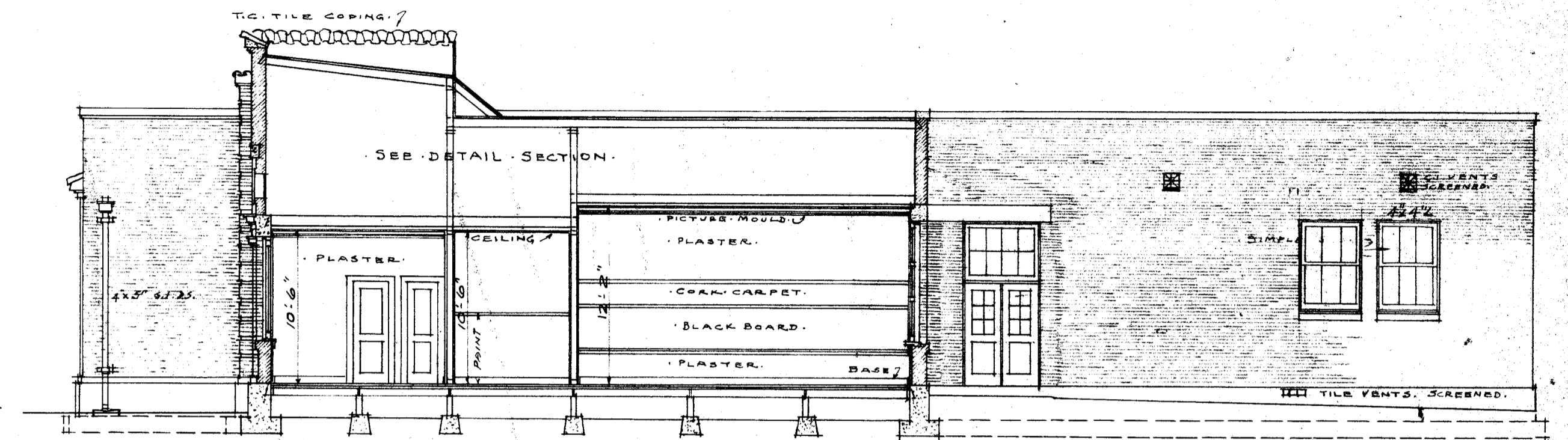
Note: Contractor to verify all dimensions on the spot. This drawing is the property of the architect and shall be returned on completion of the building.

HORACE MANN SCHOOL  
 BAKERSFIELD SCHOOL DISTRICT  
 NILE ST. BAKERSFIELD.

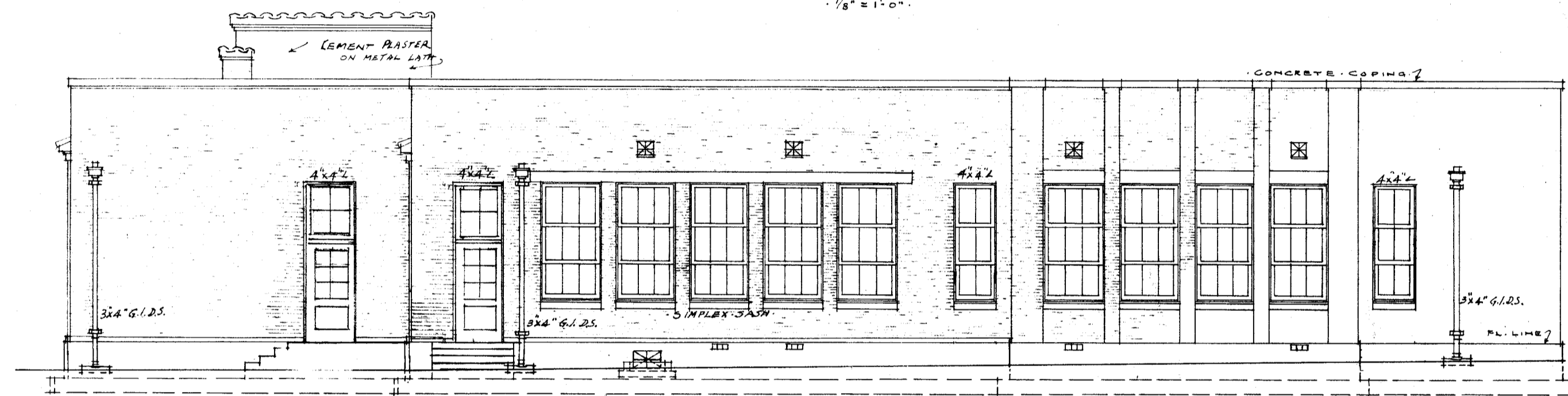
CHARLES H. BIGGAR ARCHITECT 403-406 BANK OF ITALY BLDG. BAKERSFIELD, CALIFORNIA		DATE 4-8-30 3
--	--	---------------------



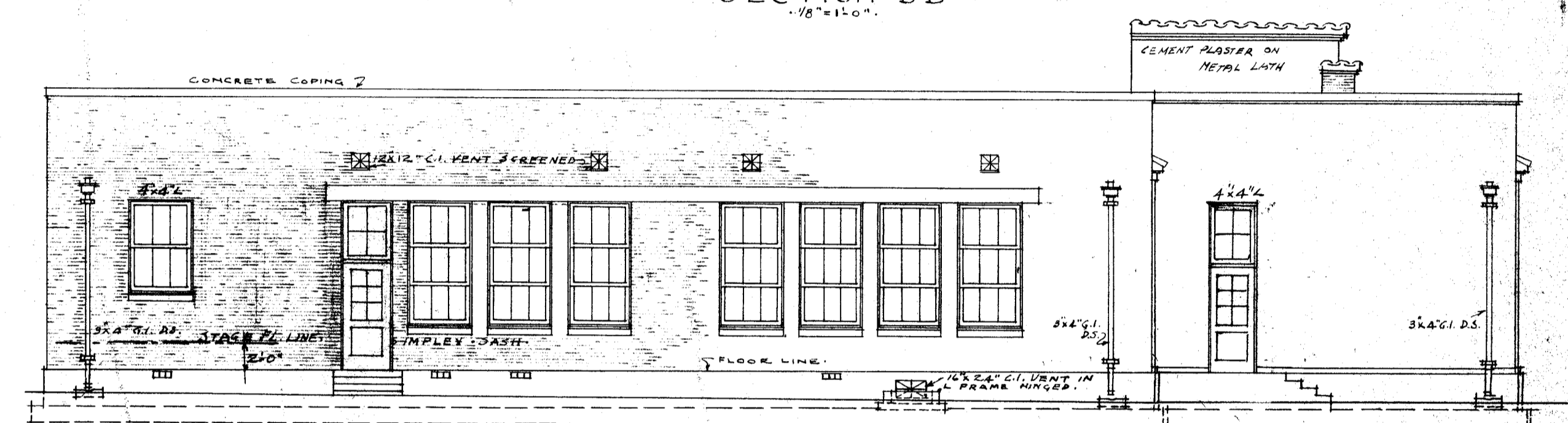
SECTION A-A  
1/8" = 1'-0"



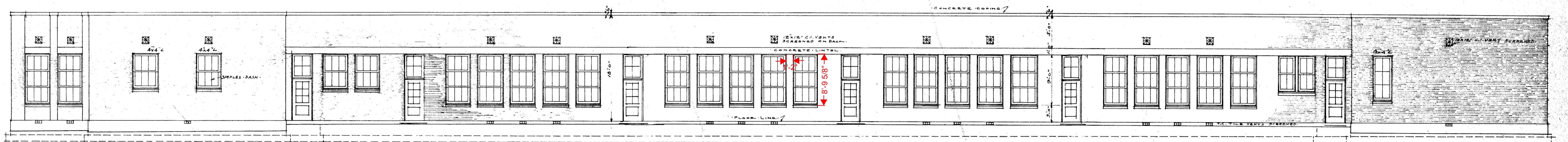
SECTION B-B  
1/8" = 1'-0"



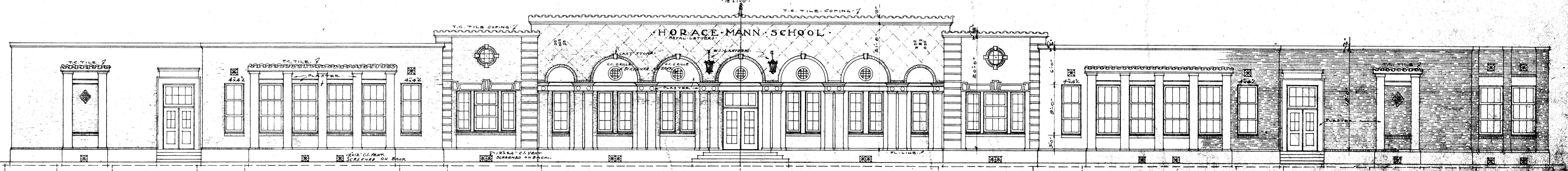
EAST ELEVATION  
1/8" = 1'-0"



WEST ELEVATION  
1/8" = 1'-0"



NORTH ELEVATION  
1/8" = 1'-0"



SOUTH ELEVATION  
1/8" = 1'-0"

HORACE MANN SCHOOL  
BAKERSFIELD SCHOOL DISTRICT  
HILL ST. BAKERSFIELD

CHARLES H. BIGGAR  
ARCHITECT  
408-406 BANK OF ITALY BLDG.  
BAKERSFIELD CALIFORNIA

NOTE - Contractor is to verify all dimensions on the spot.  
This drawing is the property of the architect and  
must be returned on completion of the contract.

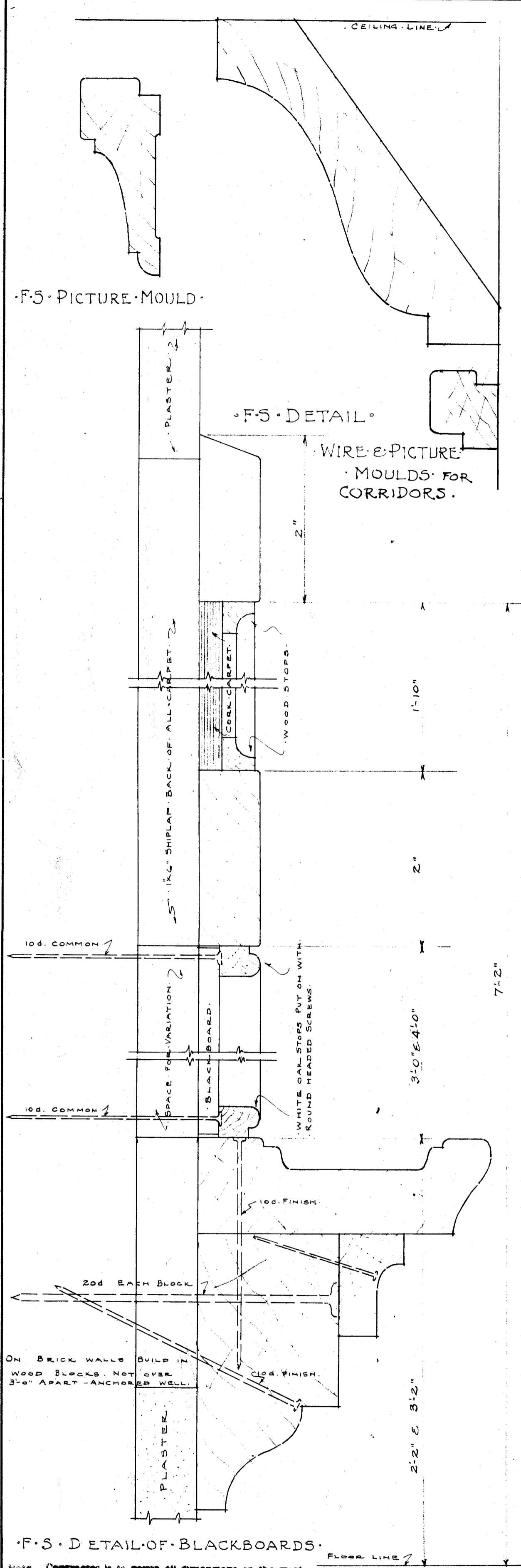


ELEVATION - DETAIL  
1/2" = 1'-0"

HORACE MANN SCHOOL  
BAKERSFIELD SCHOOL DISTRICT  
MILL ST. BAKERSFIELD

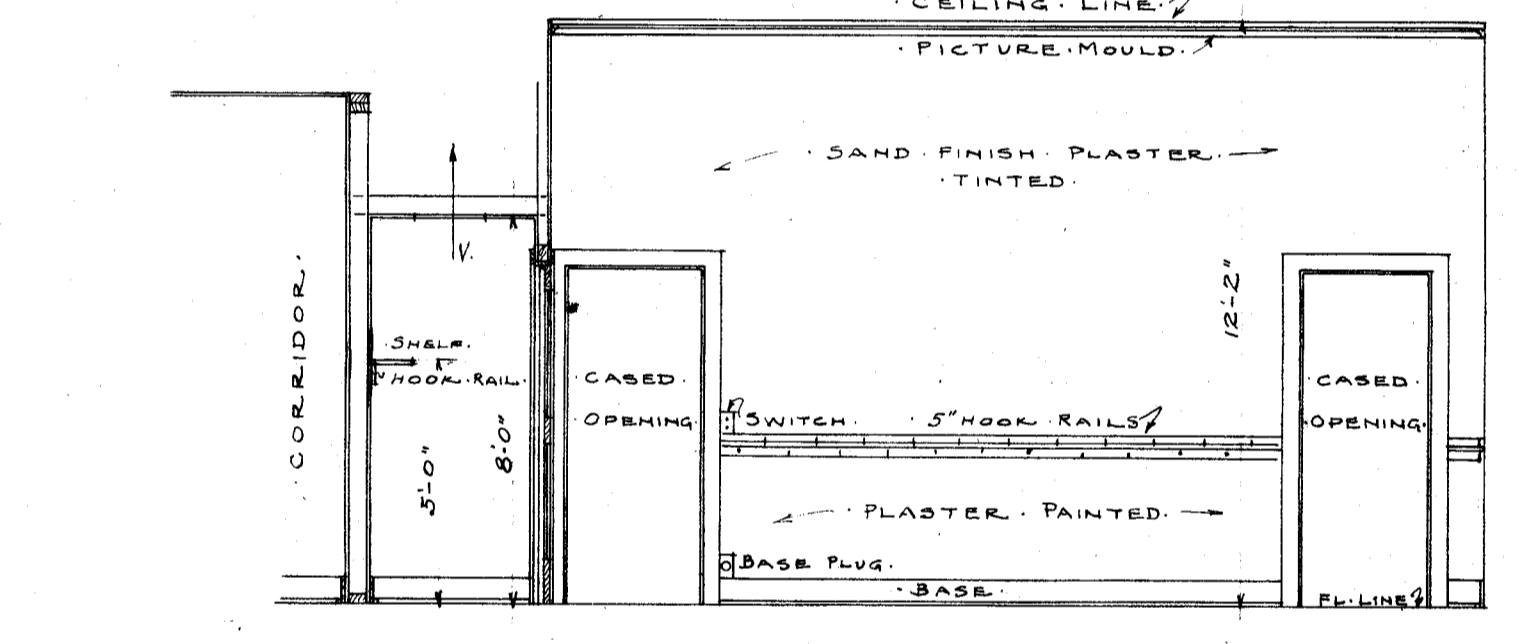
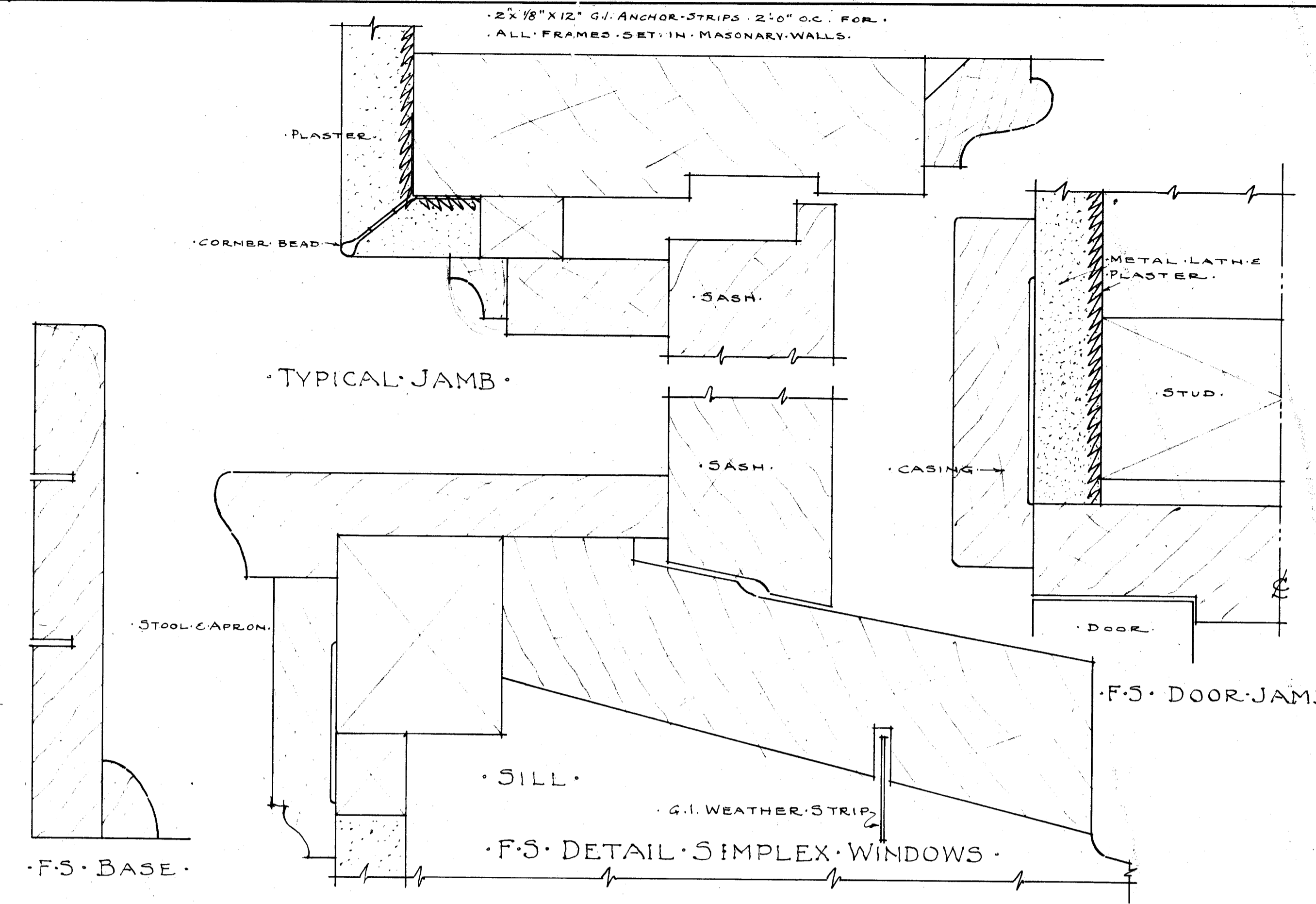
CHARLES H. BIGGAR ARCHITECT 405-406 BANK OF ITALY BLDG. BAKERSFIELD, CALIFORNIA	DATE 4-4-30 5
--	---------------------

Note: Contractor to verify all dimensions on the work. This drawing is the property of the architect and must be returned on completion of the contract.

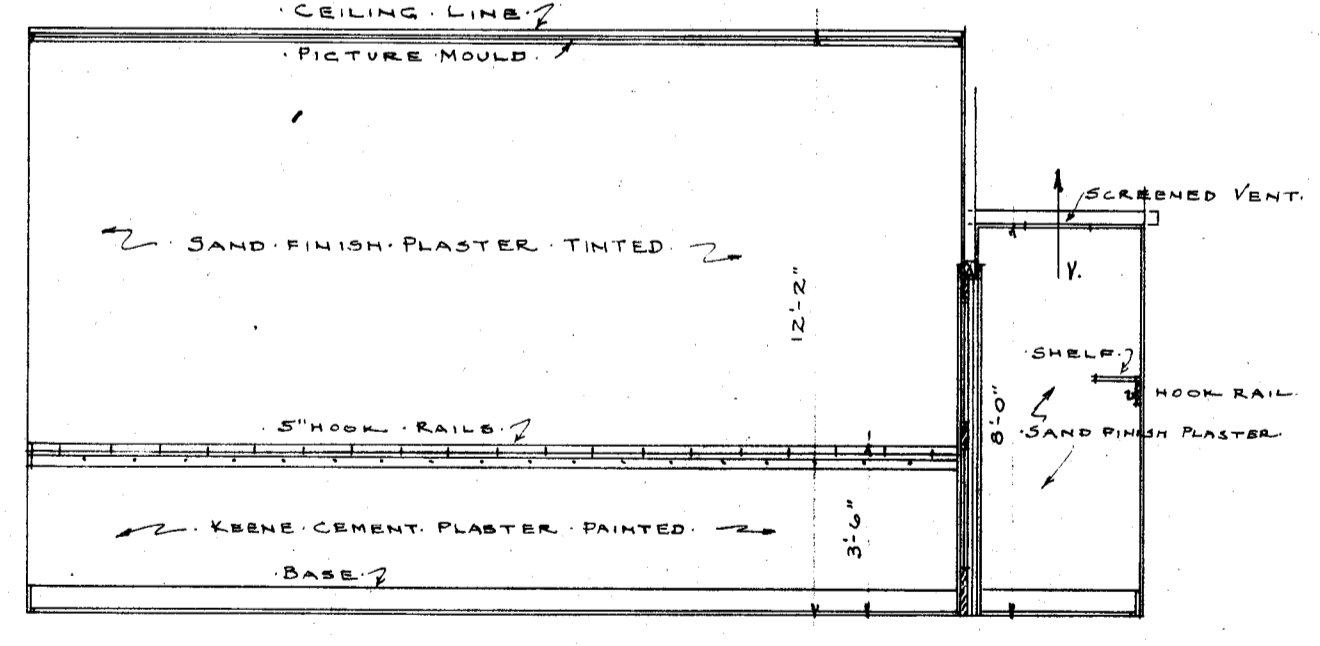


F-5 D DETAIL OF BLACKBOARDS

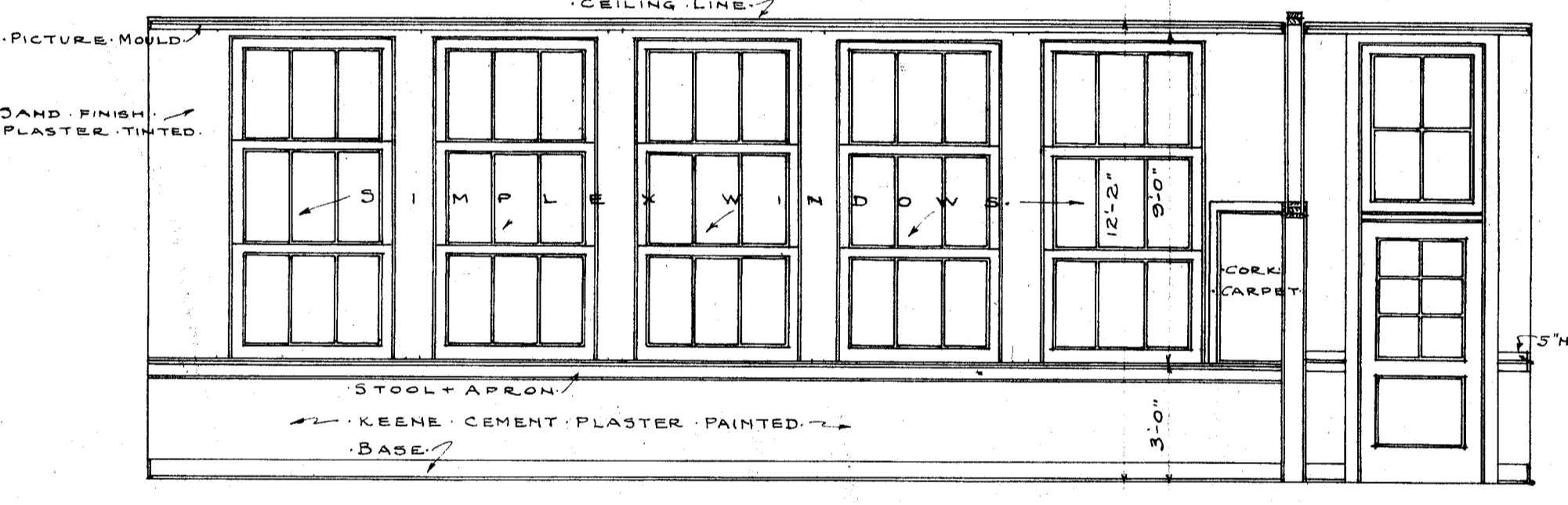
NOTE: Contractor is to verify all dimensions on the work. This drawing is the property of the architect and must be returned on completion of the contract.



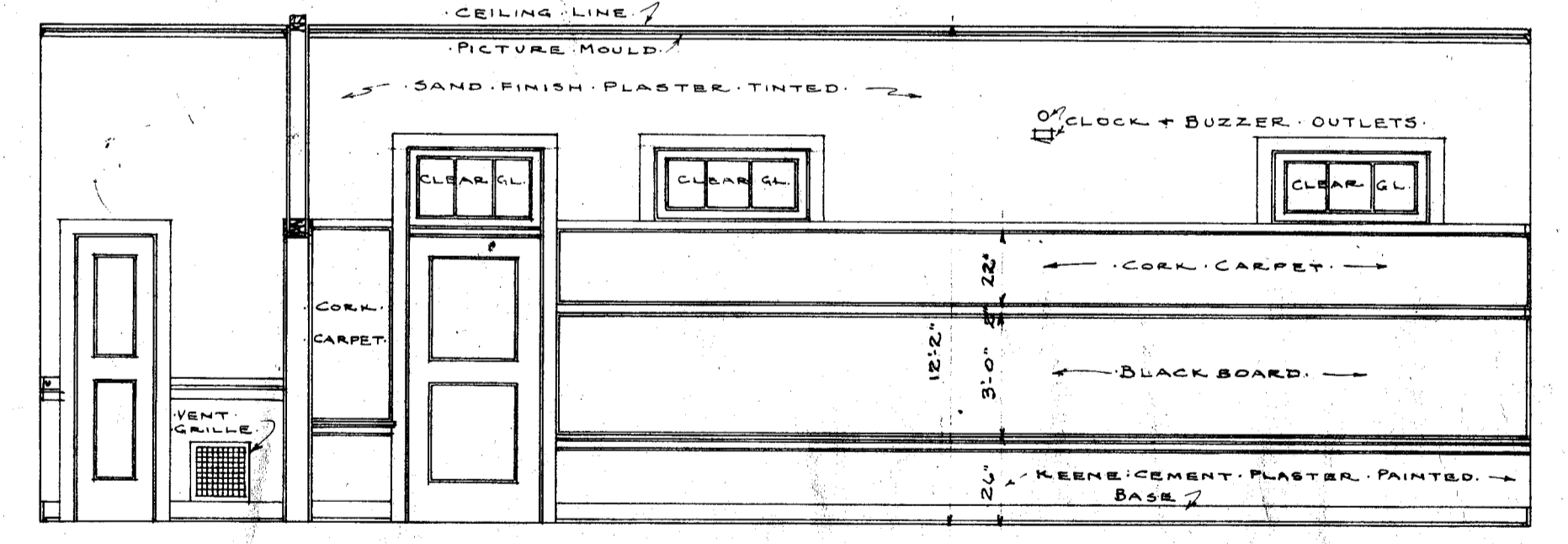
ELEVATION DETAIL COAT ROOM



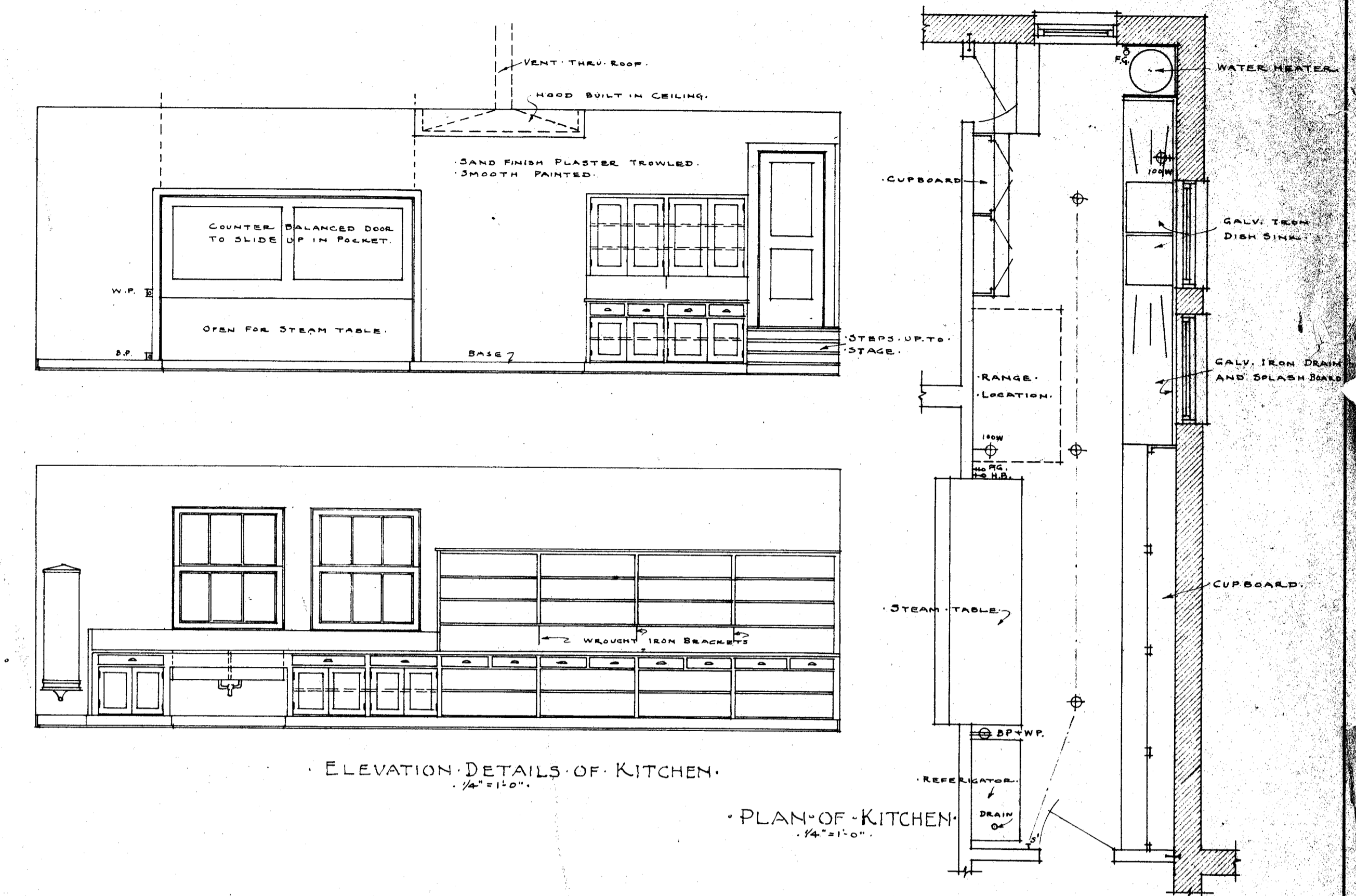
ELEVATION DETAIL COAT ROOM



ELEVATION LEFT SIDE CLASS ROOM

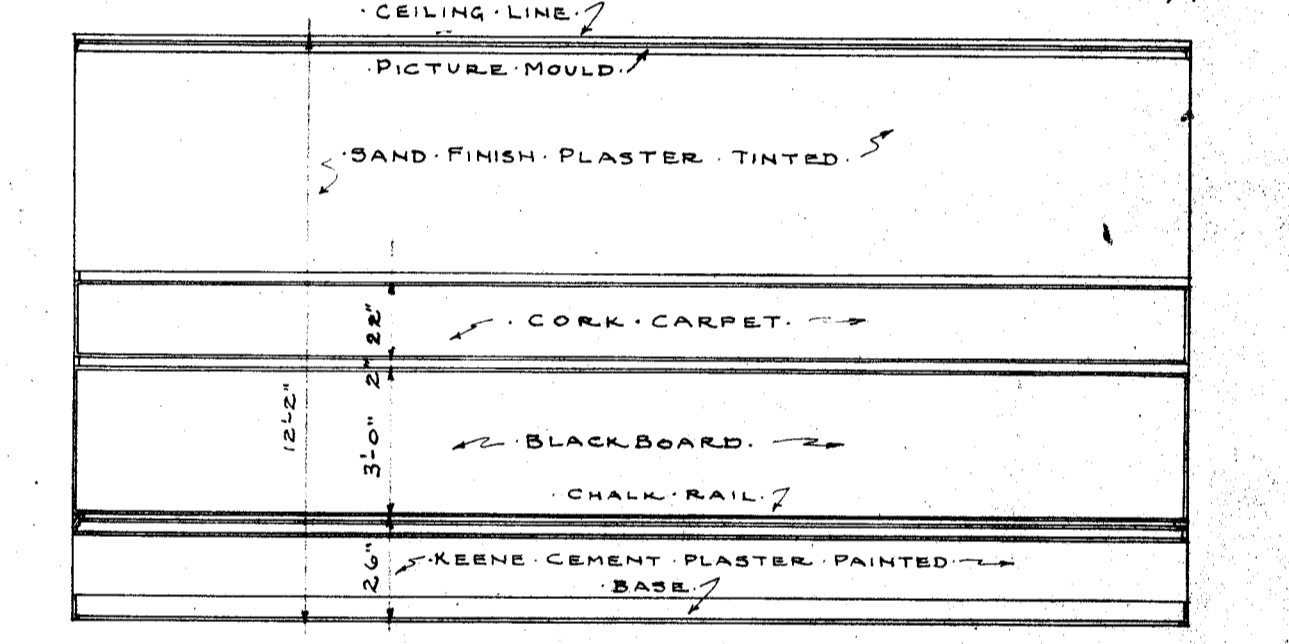


RIGHT ELEVATION

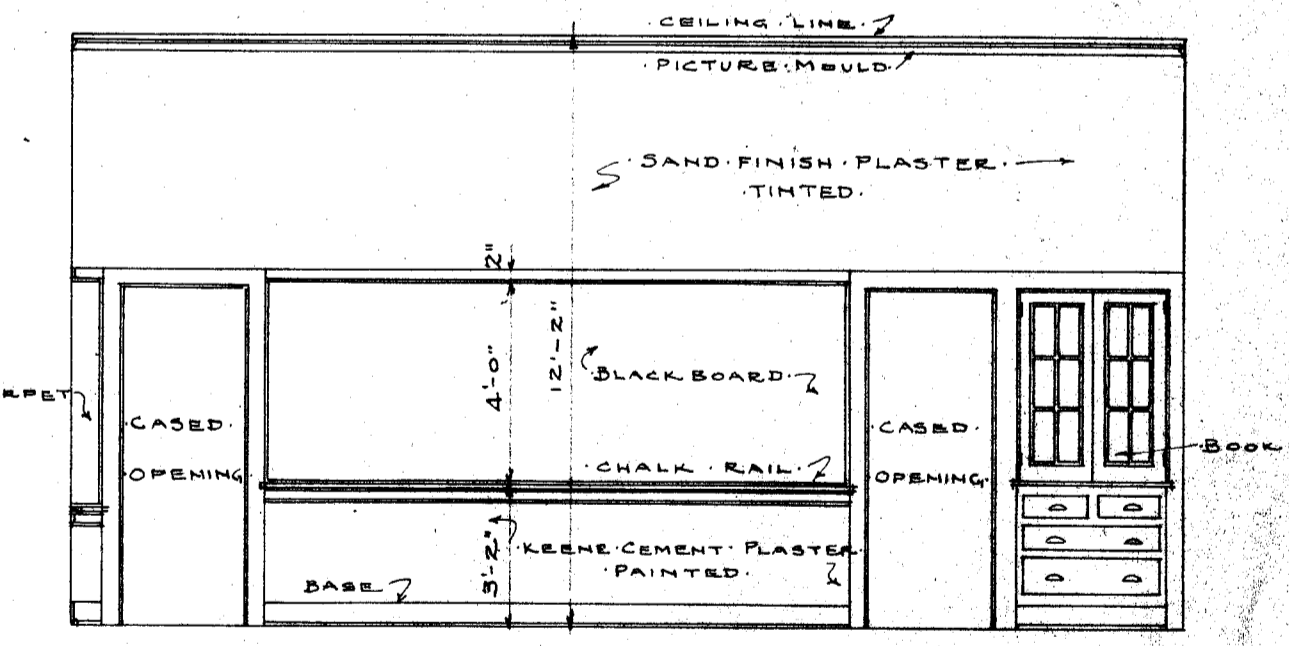


ELEVATION DETAILS OF KITCHEN

PLAN OF KITCHEN



REAR ELEVATION



FRONT ELEVATION

NOTE: ALL PAINTING AND TINTING TO BE AS SPECIFIED.

HORACE MANN SCHOOL  
 BAKERSFIELD SCHOOL DISTRICT  
 NILE ST. BAKERSFIELD

CHARLES H. BIGGAR  
 ARCHITECT  
 405-406 BANK OF ITALY BLDG.  
 BAKERSFIELD, CALIFORNIA

DATE  
 8-10-24  
 6.