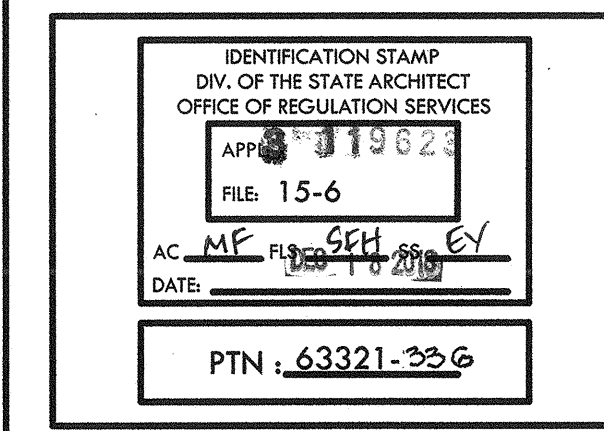


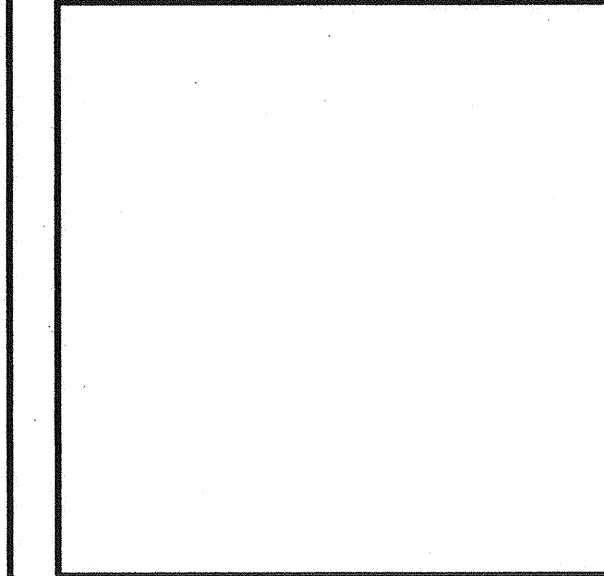
MARK	DATE	REVISIONS
▲		
▲		
▲		

CHECK AND VERIFY ALL DIMENSIONS BEFORE PROCEEDING WITH THE WORK. REPORT DISCREPANCIES TO THE ARCHITECT. ALL CONSTRUCTION SHALL CONFORM TO THE C.B.C.

SITE IMPROVEMENTS FOR (1) - 24'x40' MODULAR BUILDING AT WILLIAMS ELEMENTARY SCHOOL
 1201 WILLIAMS STREET, BAKERSFIELD, CA, 93305
 FOR
 BAKERSFIELD CITY SCHOOL DISTRICT
 BAKERSFIELD, KERN COUNTY, CALIFORNIA, 93305



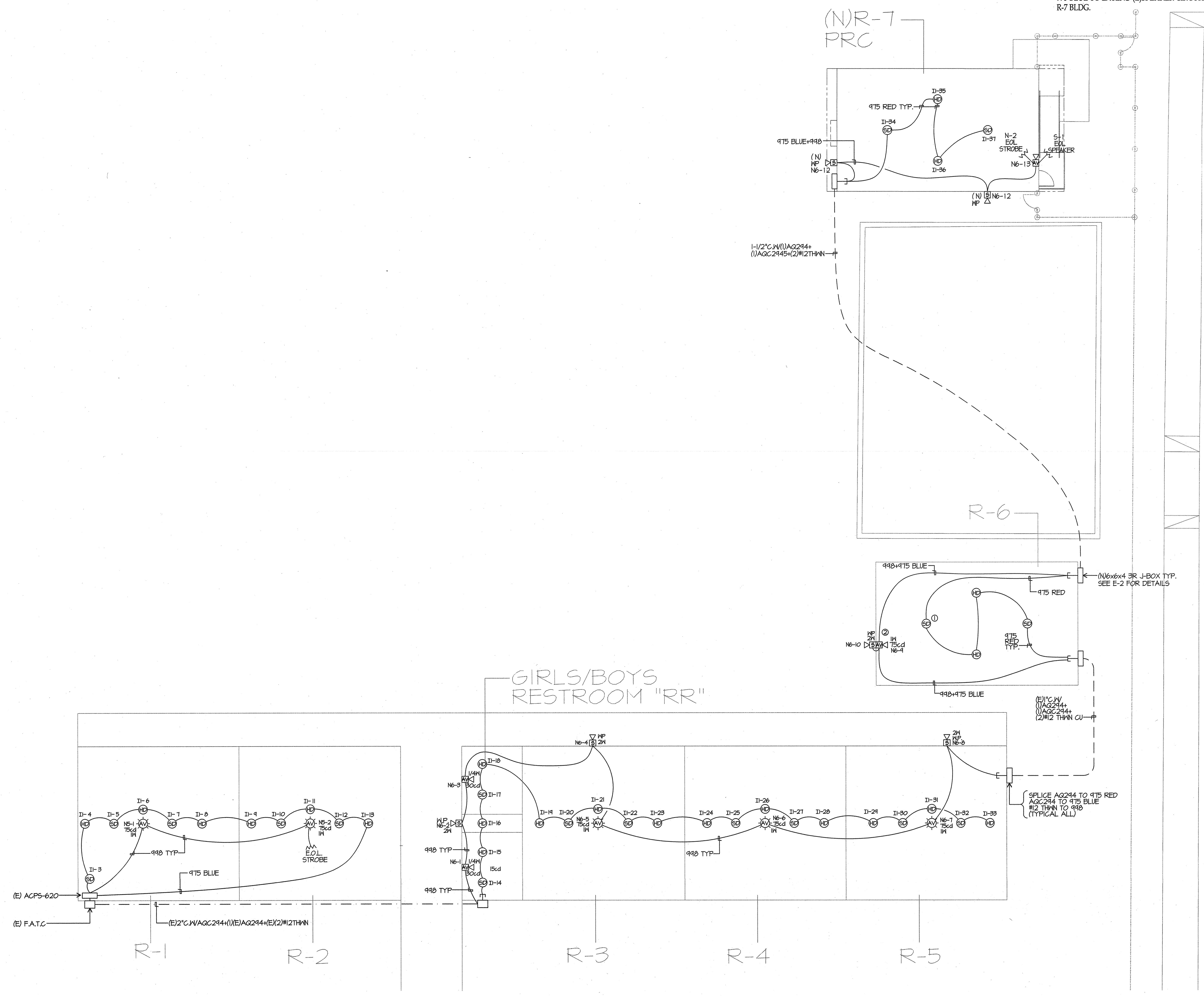
1601 NEW STINE ROAD, SUITE 280
 BAKERSFIELD, CA 93309
 PH: (661) 397-4377
 FAX: (661) 397-4378
 WWW.SCARCHITECT.COM



FIRE ALARM TYPICAL PORTABLE PLAN

JOB NO. 1257
 DRAWN: AC
 CHECKED: KT
 DATE: 06-29-16
E-0.3
 OF SHEETS

- F.A. NOTES**
- 1 EXTEND (E)SLC FROM LAST SMOKE DETECTOR DEVICE AS SHOWN WITH 975 CABLE AND AQ294 TO NEW R-7 BLDG.
 - 2 EXTEND (E) NAC CIRCUIT N-2 WITH 998 CABLE AND 975 BLUE TO EXTEND (E)SPEAKER CIRCUIT S-1 TO NEW R-7 BLDG.



FIRE ALARM TYPICAL PORTABLE PLAN
 SCALE: 1/8"=1'-0"

