

12' X 40'
RELOCATABLE
CLASSROOMS



787 SPOCKAN AVE. MANTROCK, CA 95336
(925) 925-1211 FAX (925) 925-2018
americanmodular.com

INTERIOR ELEVATIONS AND OPTIONS

CUSTOMER:
BAKESFIELD CITY SCHOOL DISTRICT
WAYSIDE ELEMENTARY

DATE: 04/02/08
SCALE: NONE
DRAWN BY: RS
CHECKED BY:
SERIAL NO.:

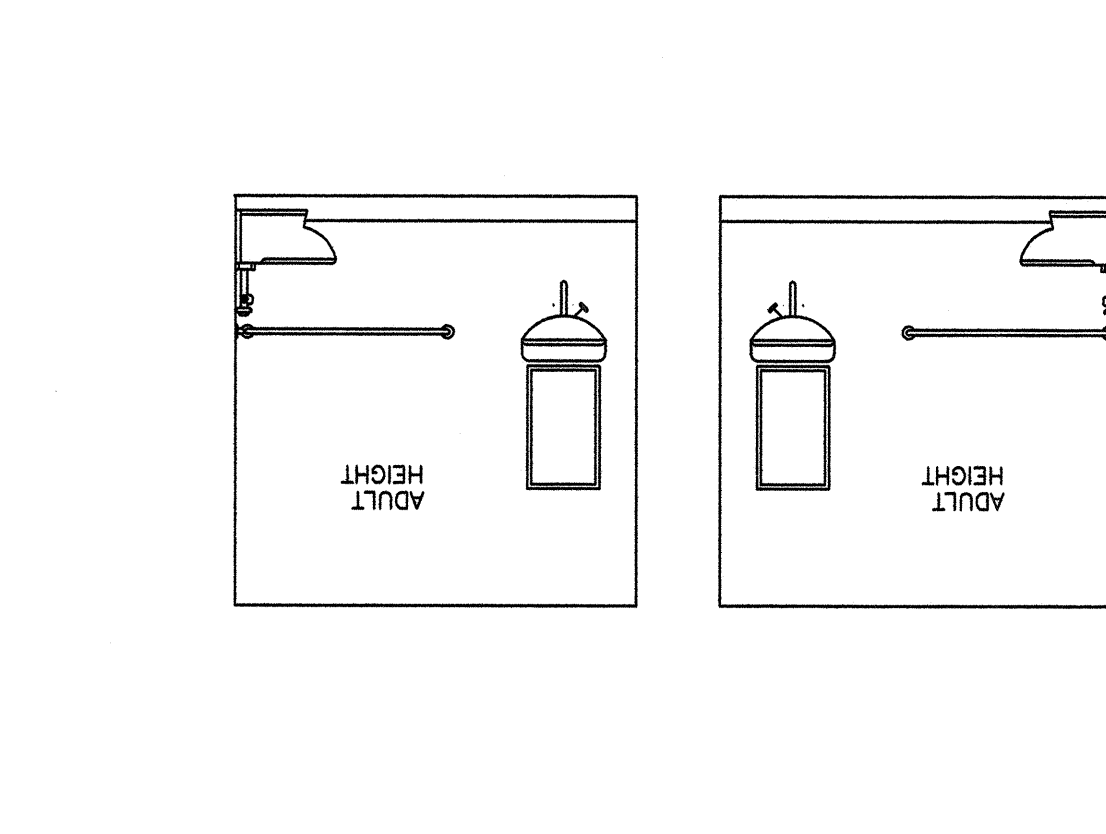
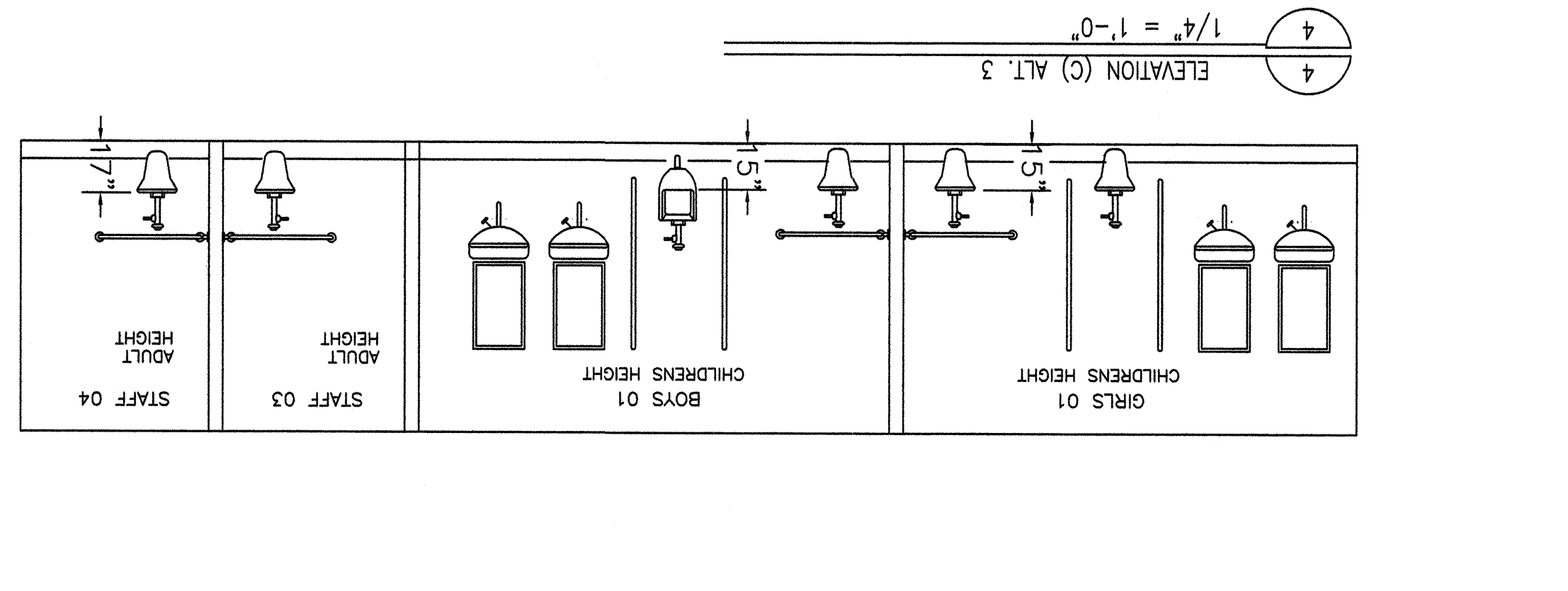
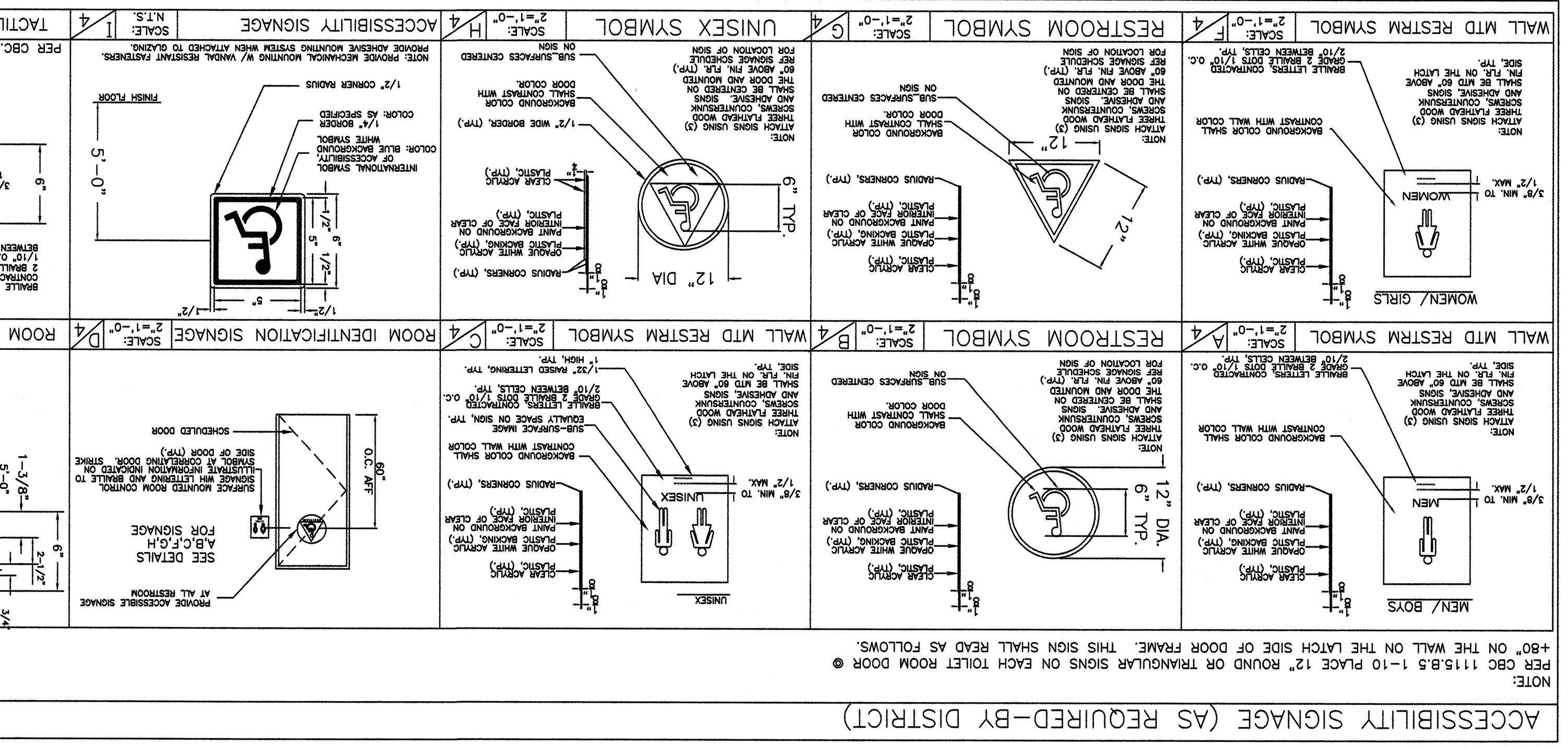
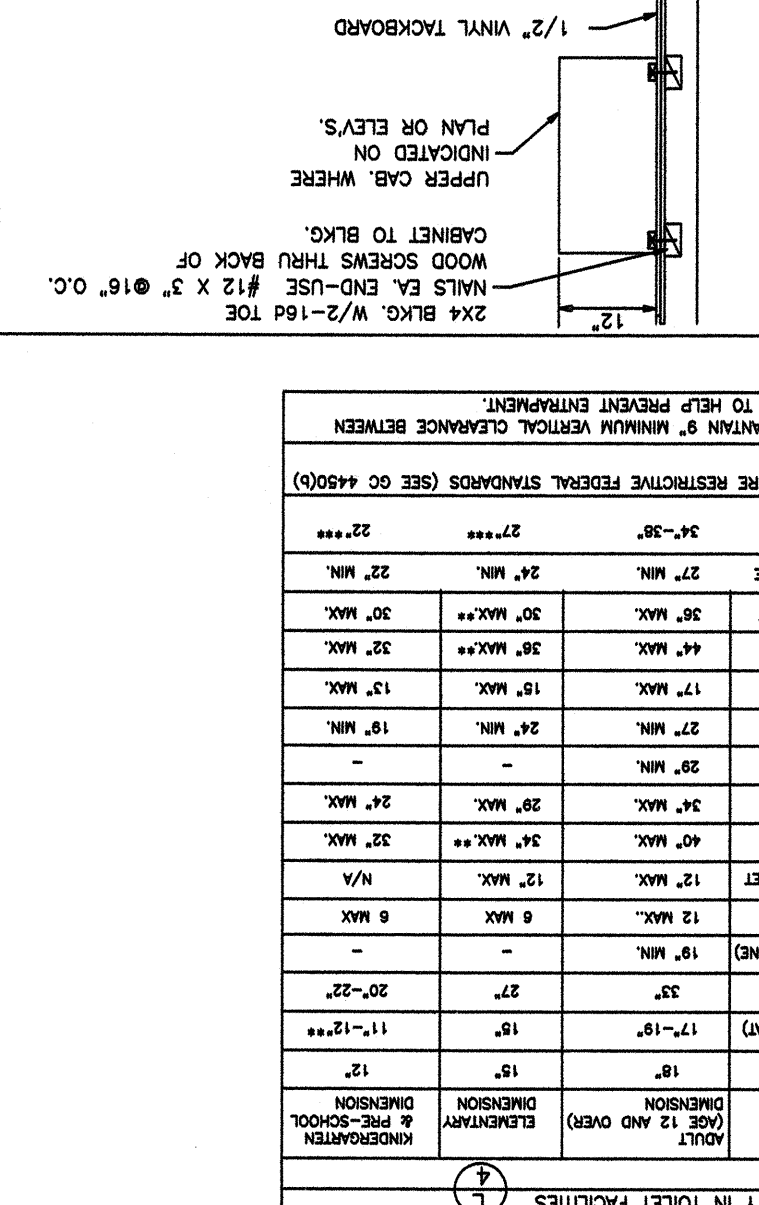
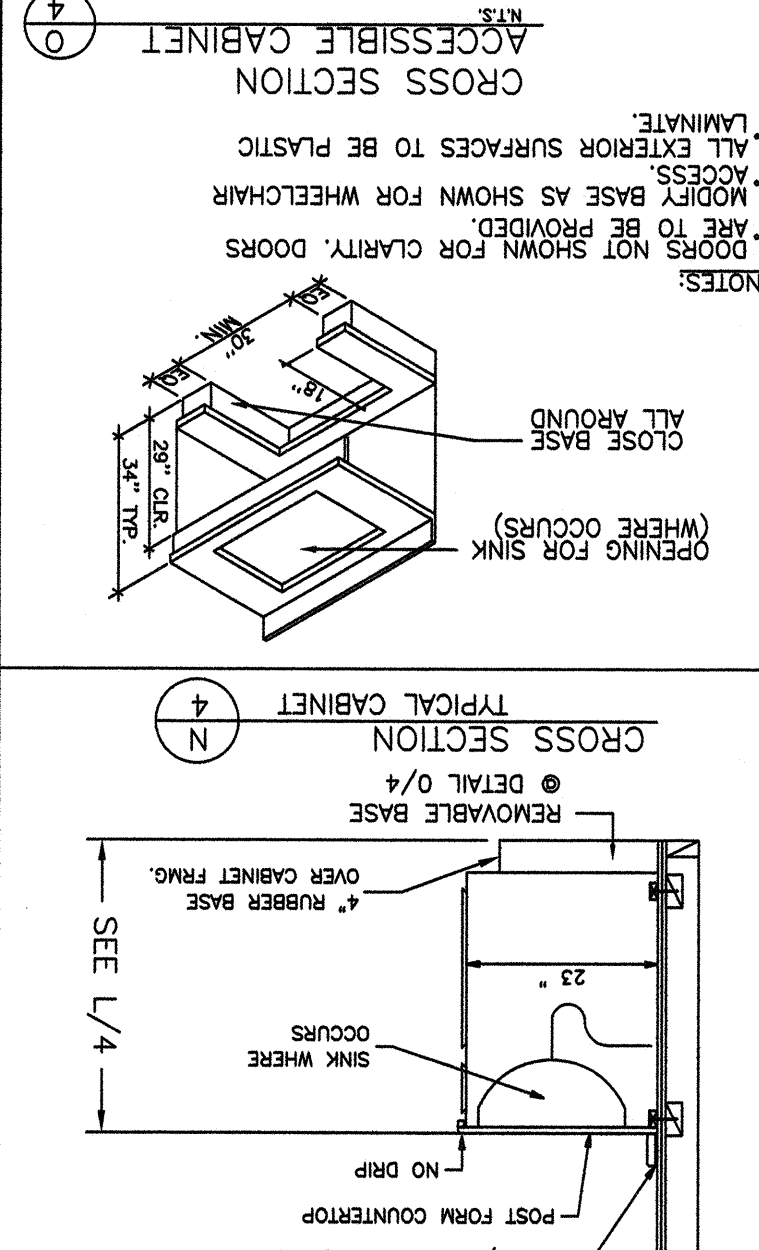
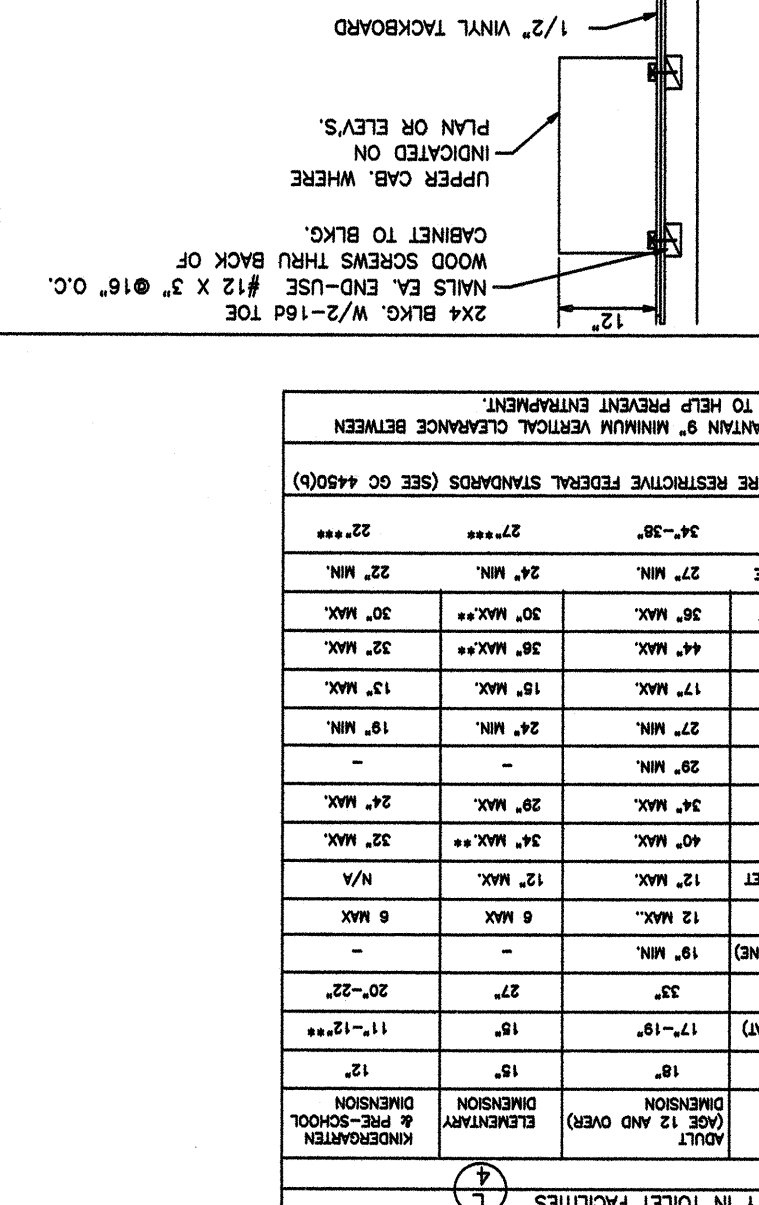
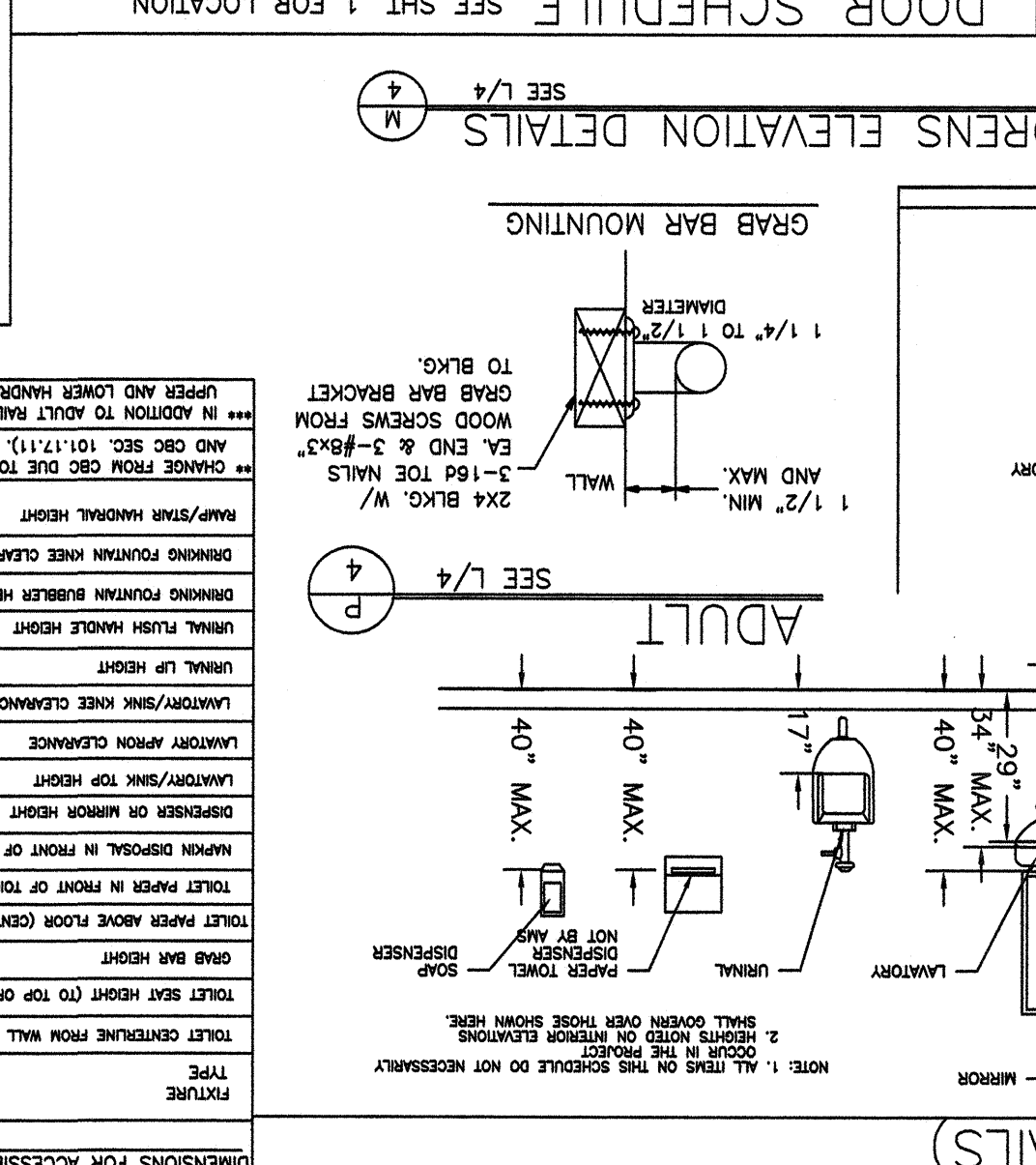
NO.	DATE	DESCRIPTION	NO.	DATE	DESCRIPTION

REVISIONS

PROJECT NO.
SHEET NO. 4

ROOM NUMBER	ROOM NAME	FLOOR	BASE	FRONT	REAR	RIGHT	LEFT	CEILING	REMARKS
1	RESTROOM	B	E	I	I	I	I	J	8'-6"
2	RESTROOM	B	E	I	I	I	I	J	8'-6"
3	RESTROOM	B	E	I	I	I	I	J	8'-6"
4	RESTROOM	B	E	I	I	I	I	J	8'-6"
9	FLUING CHASE	N/A	N/A	N/A	N/A	N/A	N/A	N/A	N/A

DOOR NO.	FRAME OPENING	MATERIAL	TYPE	RATING	HARDWARE SET NO.	QUANTITY	MATERIAL	HEAD DETAIL	JAMB DETAIL	THROAT DETAIL	NOTE NO.
1	3'-0" x 7'-0"	H.M.	A	1	H.M.	6/1	6/1	4/1	5/1		
2	3'-0" x 7'-0"	H.M.	B	N/A	A	1	H.M.	6/1	6/1	4/1	5/1
3	2'-0" x 7'-0"	H.M.	A	1	H.M.	6/1	6/1	4/1	5/1		



STATE OF CALIFORNIA
COUNTY OF CALIFORNIA
No. C 12831
Pen. 3.2127
FILE NO. 03-11734
DATE APR 29 2008
ACW FLSS
REGISTRATION STAMP
OFFICE OF REGULATION SERVICES

